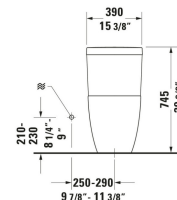
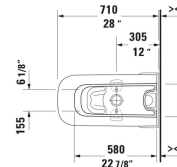
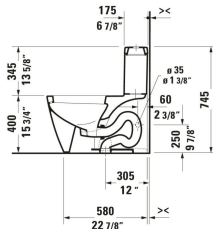
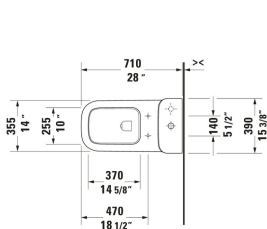


Happy D.2 One Piece Toilet # 212101..01 / 212101..01

< 15 3/8 " >



One Piece Toilet	Dimension	Weight	Order number
28 ", elongated, Dual Flush, Flush water quantity: 1.32/1.32 gal, Siphonic, Flushing rim: Closed, Outlet: vertical, Trip lever placement: Top, Rough-in: 12 ", cUPC listed: Yes			
Colors			
00 White 20 HygieneGlaze (an antibacterial ceramic glaze that provides almost indefinite effectiveness)			
Variant			
<ul style="list-style-type: none"> White High Gloss, Flush water quantity: 1.32/0.92 gal, WaterSense: Yes 	15 3/8 "x29 3/8 "	125.663 lb	212101..01
<ul style="list-style-type: none"> White High Gloss, HygieneGlaze, Flush water quantity: 1.32/0.92 gal, WaterSense: Yes 	15 3/8 "x29 3/8 "	125.663 lb	212101..01
Spare parts			
Installation Set One Piece Toilet, Toilet Bowl	2 3/8 x 5 1/8 "	1.499 lb	001431
Suitable products			
Toilet Seat Shape: Rectangular, Slow close: No, Removable Seat, Hinge material: Stainless Steel, elongated, 14 1/8 x 19 1/4 14 1/8 x 19 1/4 "			006461
Toilet Seat Shape: Rectangular, Slow close: Yes, Removable Seat, Hinge material: Stainless Steel, elongated, 14 1/2 x 19 1/4 14 1/2 x 19 1/4 "			006469
One Piece Toilet One Piece Toilet: 2121010001, elongated, Siphonic, Flushing rim: Closed, Outlet vertical, Dual Flush, Trip lever placement: Top, Flush water quantity: 1.32 gal/0.92 gal, Toilet Seat: 0064690099, Lid color: White High Gloss, Removable Seat, Slow close, 0 x 0 "			D41021

All drawings contain the necessary measurements which are subject to standard tolerances. They are stated in inch & mm and are non-binding. Exact measurements, in particular for customized installation scenarios, can only be taken from the finished ceramic piece.