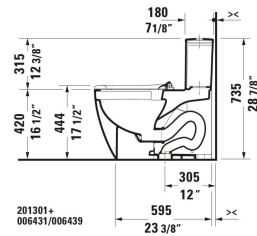
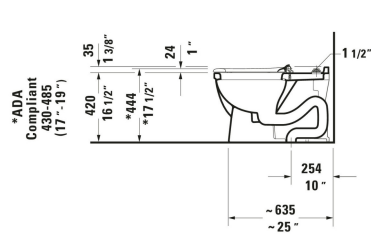


## Starck 3 Toilet Seat # 0064310000

| < 14 3/8 " > |



Toilet Seat	Dimension	Weight	Order number
Open front, elongated			
<b>Colors</b>			
00 White			
<b>Variant</b>			
Seat color: White, Seat gloss level: High Gloss, Continuous hinge rod, Hinge color: White	14 3/8 "x2 "	2.425 lb	0064310000
<b>Suitable products</b>			
Toilet Bowl 27 1/2 ", elongated, Flush water quantity: 1.28/1.28 gal, Siphonic, Flushing rim: Closed, Outlet vertical, cUPC listed: Yes, 14 3/4 x 27 1/2 "	14 3/4 x 27 1/2 "		212501
One Piece Toilet 27 3/4 ", elongated, Single Flush, Flush water quantity: 1.28 gal, Siphonic, Flushing rim: Closed, Outlet: vertical, Trip lever placement: LeftRight, Rough-in: 12 ", cUPC listed: Yes, 15 1/2 x 27 3/4 "	15 1/2 x 27 3/4 "		212001
Wall Mounted Toilet Flush water quantity: 1.6/0.8 gal, Washdown model, Flushing rim: Closed, Flush system: washdown model, Outlet horizontal, Concealed fixation, ADA: Yes, cUPC listed: Yes, 14 3/8 x 24 3/8 "	14 3/8 x 24 3/8 "		222609
Wall Mounted Toilet Flush water quantity: 1.2/0.8 gal, Washdown model, Flushing rim: Closed, Flush system: washdown model, Outlet horizontal, Concealed fixation, ADA: Yes, cUPC listed: Yes, 14 3/8 x 24 5/8 "	14 3/8 x 24 5/8 "		254409
One Piece Toilet 28 3/8 ", elongated, Back to wall, Single Flush, Flush water quantity: 1.28 gal, Siphonic, Flushing rim: Closed, Outlet: vertical, Trip lever placement: Top, Rough-in: 12 ", cUPC listed: Yes, 16 x 28 3/8 "	16 x 28 3/8 "		212301
Toilet Bowl 27 3/4 ", elongated, Flush water quantity: 1.28/1.28 gal, Siphonic, Flushing rim: Closed, Outlet vertical, cUPC listed: Yes, 14 5/8 x 27 3/4 "	14 5/8 x 27 3/4 "		212601
Wall Mounted Toilet Flush water quantity: 1.2/0.8 gal, Washdown model, Flushing rim: Closed, Flush system: washdown model, Outlet horizontal, Concealed fixation, ADA: Yes, cUPC listed: Yes, 14 3/4 x 24 3/8 "	14 3/4 x 24 3/8 "		253309

## Starck 3 Toilet Seat # 0064310000

| < 14 3/8 " > |

One Piece Toilet 28 ", elongated, Single Flush, Flush water quantity: 1.28 gal, Siphonic, Flushing rim: Closed, Outlet: vertical, Trip lever placement: Top, Rough-in: 12 ", cUPC listed: Yes, 14 3/4 x 28 "	213301
One Piece Toilet 28 3/4 ", elongated, Siphonic, Flushing rim: Rimless, Outlet: vertical, Rough-in: 12 ", cUPC listed: Yes, 15 3/8 x 28 3/4 "	217301
One Piece Toilet 28 3/4 ", elongated, Siphonic, Flushing rim: Rimless, Outlet: vertical, Rough-in: 12 ", ADA: Yes, cUPC listed: Yes, 15 1/2 x 28 3/4 "	218501

*All drawings contain the necessary measurements which are subject to standard tolerances. They are stated in inch & mm and are non-binding. Exact measurements, in particular for customized installation scenarios, can only be taken from the finished ceramic piece.*