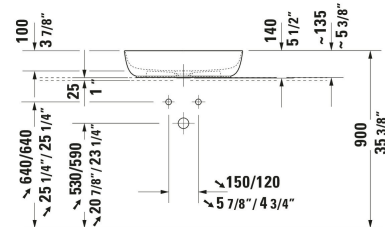
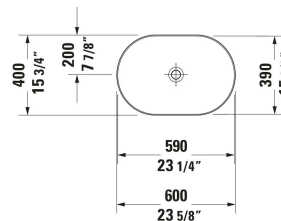


## Luv Vessel Sink # 0379600000

| < 23 5/8 " > |



Vessel Sink	Dimension	Weight	Order number
DuraCeram®, Oval, Includes faucet deck: No, Overflow: No, Ground, Includes ceramic drain cover, Includes slotted waste, 23 5/8 "			
<b>Colors</b>			
00 White			
<b>Variant</b>			
☒ White High Gloss, Number of basins: 1 Middle, Back side glazed: No, cUPC listed: No	23 5/8 "x5 1/2 "	19.621 lb	0379600000
<b>Spare parts</b>			
P-Trap Material: Brass, Outlet: horizontal, Suitable for Wall Mounted Sink	2 3/4 x 16 3/4 "	3.307 lb	005036
<b>Suitable products</b>			
Console vanity unit floorstanding Number of drawers: 1, Includes vanity top: No, Without handle, Slow close, Pressure inlet, Drawer organizer Optional, Feet Yes, Adjustable height, 52 5/8 x 22 1/2 "	52 5/8 x 22 1/2 "		LU9561
Console vanity unit floorstanding Number of drawers: 2, Includes vanity top: No, Without handle, Slow close, Pressure inlet, Drawer organizer Optional, Feet Yes, Adjustable height, 68 1/4 x 22 1/2 "	68 1/4 x 22 1/2 "		LU9562 B
Console vanity unit floorstanding Number of drawers: 2, Includes vanity top: No, Without handle, Slow close, Pressure inlet, Drawer organizer Optional, Feet Yes, Adjustable height, 68 1/4 x 22 1/2 "	68 1/4 x 22 1/2 "		LU9563 L/R
Console vanity unit floorstanding Number of drawers: 1, Includes vanity top: No, Without handle, Siphon cut-out: Yes, Panel: Yes, Slow close, Pressure inlet, Feet Yes, Adjustable height, 25 1/8 x 17 3/4 "	25 1/8 x 17 3/4 "		LU9560
Console vanity unit floorstanding Number of drawers: 1, Number of drawers: 1, Includes vanity top: No, Without handle, Siphon cut-out: Yes, Panel: Yes, Slow close, Pressure inlet, Feet Yes, Adjustable height, 25 1/8 x 17 3/4 "	25 1/8 x 17 3/4 "		LU9565

## Luv Vessel Sink # 0379600000

| < 23 5/8 " > |

Console vanity unit floorstanding Number of drawers: 1, Number of drawers: 1, Includes vanity top: No, Without handle, Siphon cut-out: Yes, Panel: Yes, Slow close, Pressure inlet, 52 5/8 x 22 1/2 " Drawer organizer Optional, Feet Yes, Adjustable height, 52 5/8 x 22 1/2 "	LU9566
Console vanity unit floorstanding Number of drawers: 2, Number of drawers: 2, Includes vanity top: No, Without handle, Siphon cut-out: Yes, Panel: Yes, Slow close, Pressure inlet, 68 1/4 x 22 1/2 " Drawer organizer Optional, Feet Yes, Adjustable height, 68 1/4 x 22 1/2 "	LU9567 B
Console vanity unit floorstanding Number of drawers: 2, Number of drawers: 2, Includes vanity top: No, Without handle, Siphon cut-out: Yes, Panel: Yes, Slow close, Pressure inlet, 68 1/4 x 22 1/2 " Drawer organizer Optional, Feet Yes, Adjustable height, 68 1/4 x 22 1/2 "	LU9568 L/R
Console vanity unit floorstanding Number of drawers: 1, Includes vanity top: No, Without handle, Slow close, Pressure inlet, Drawer organizer Optional, Feet Yes, Adjustable height, 36 7/8 x 22 1/2 "	LU9564
Console vanity unit floorstanding Number of drawers: 1, Number of drawers: 1, Includes vanity top: No, Without handle, Siphon cut-out: Yes, Panel: Yes, Slow close, Pressure inlet, 36 7/8 x 22 1/2 " Drawer organizer Optional, Feet Yes, Adjustable height, 36 7/8 x 22 1/2 "	LU9569
Vanity Cabinet Number of drawers: 1, Includes vanity top: Yes, Faucet holes possible, Handle, Slow close, Lay-in compartment Optional, 31 1/2 x 21 5/8 "	DE4947
Vanity Cabinet Number of drawers: 1, Includes vanity top: Yes, Faucet holes possible, Handle, Slow close, Lay-in compartment Optional, 47 1/4 x 21 5/8 "	DE4949
Vanity Cabinet Number of drawers: 1, Number of drawers: 1, Includes vanity top: Yes, Faucet holes possible, Handle, Siphon cut-out: Yes, Panel: Yes, Slow close, Lay-in compartment Optional, 31 1/2 x 21 5/8 "	DE4967
Vanity Cabinet Number of drawers: 1, Number of drawers: 1, Includes vanity top: Yes, Faucet holes possible, Handle, Siphon cut-out: Yes, Panel: Yes, Slow close, Lay-in compartment Optional, 39 3/8 x 21 5/8 "	DE4968
Vanity Cabinet Number of drawers: 1, Number of drawers: 1, Includes vanity top: Yes, Faucet holes possible, Handle, Siphon cut-out: Yes, Panel: Yes, Slow close, Lay-in compartment Optional, 47 1/4 x 21 5/8 "	DE4969

*All drawings contain the necessary measurements which are subject to standard tolerances. They are stated in inch & mm and are non-binding. Exact measurements, in particular for customized installation scenarios, can only be taken from the finished ceramic piece.*