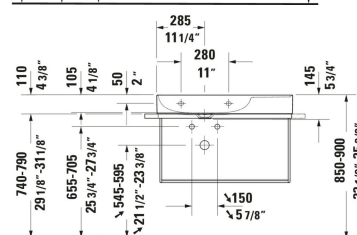
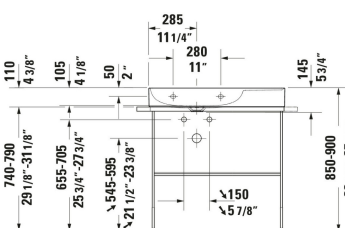
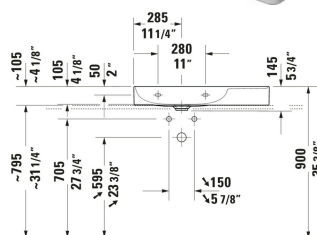
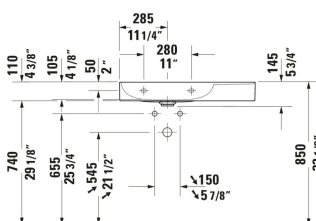
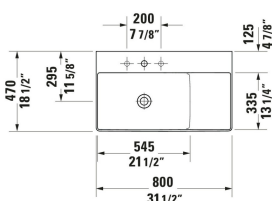


DuraSquare Wall Mounted Sink # 2348800044 / 2348800073 / 2348800079

| < 31 1/2 " > |



Wall Mounted Sink	Dimension	Weight	Order number
DuraCeram®, Asymetrical, Includes faucet deck: Yes, Overflow: No, Includes ceramic drain cover, Includes slotted waste, Underside glazed, Back side glazed: No, 31 1/2 ", cUPC listed: Yes			
Colors			
00 White			
Variant			
●●● White High Gloss, Rectangular, Number of basins: 1 Left, Number of faucet holes: 3 Middle, Soap dispenser position: Left	31 1/2 "x5 3/4 "	42.329 lb	2348800044
●●● White High Gloss, Rectangular, Number of basins: 1 Left, Number of faucet holes: 3 Middle, Ground, Soap dispenser position: Left	31 1/2 "x5 3/4 "	42.329 lb	2348800073
⊗ White High Gloss, Rectangular, Number of basins: 1 Left, Ground	31 1/2 "x5 3/4 "	42.329 lb	2348800079
Spare parts for White High Gloss, Rectangular, Number of basins: 1 Left, Number of faucet holes: 3 Middle, Soap dispenser position: Left			
P-Trap Material: Brass, Outlet: horizontal, Suitable for Wall Mounted Sink	2 3/4 x 16 3/4 "	3.307 lb	005036
Suitable products			
Console Installation Type: Floorstanding, Sink mounted, Adjustable height: 2 ", Hardware included: Yes, Reversible: Yes, Includes towel rail: Yes, 34 x 17 3/4 "	34 x 17 3/4 "		003111
Console Installation Type: Sink mounted, Hardware included: Yes, Reversible: Yes, Includes towel rail: Yes, 34 x 17 3/4 "	34 x 17 3/4 "		003112
Shelf Insert Material: Glass, 30 3/8 x 15 "	30 3/8 x 15 "		009967

**DuraSquare Wall Mounted Sink # 2348800044 / 2348800073 /
2348800079**

|< 31 1/2 " >|

All drawings contain the necessary measurements which are subject to standard tolerances. They are stated in inch & mm and are non-binding. Exact measurements, in particular for customized installation scenarios, can only be taken from the finished ceramic piece.