



# IdealBase™

## Specialty Wall Base

Infection control and providing a sanitary environment in health-care settings is crucial. That's why we created IdealBase™, a 6.25" wall base that extends 2" onto the floor so that it can be welded to the floor covering to create a sanitary transition up the wall. IdealBase replaces traditional flash coving, providing cost savings and enhanced performance, all in an aesthetically clean look that compliments your room design.

### Benefits

- IdealBase installation eliminates dye-lot concerns on corners and provides simpler, more forgiving and faster installation than traditional flash cove methods\*
- More durable against heavy medical equipment than traditional flash cove methods
- Aesthetically clean look with 2" toe and return toe at top
- High-performance blend allows IdealBase to bond to a variety of floor coverings stronger than other products
- Proudly made in the USA

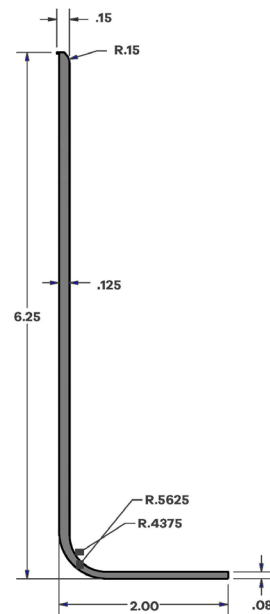
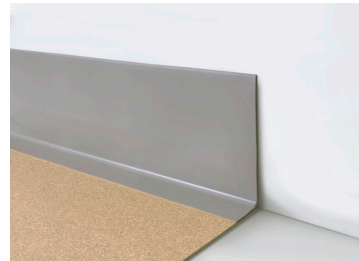
### Environmental Attributes

- FloorScore® Certified; CDPH v 1.1 - 2010
- May contribute to LEED credits
- mindful MATERIALS



\*See installation instructions for more details

**Crafted with Purpose®**



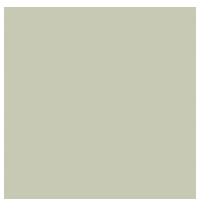
\*Shown in .080". Also available in .100" and .118"

**Mannington®**  
COMMERCIAL

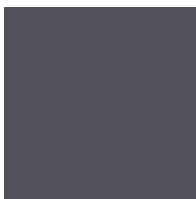


### Product Information

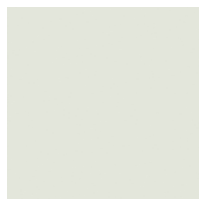
- TP Construction
- Specially engineered for use with homogeneous and heterogeneous sheet (.080"), BioSpec OR Armor (.100") as well as rubber sheet (.118")
- Will not fade or crack
- Scuff and scratch resistant
- Available in 8' lengths for less vertical seams and 10 colors to coordinate with our most popular resilient flooring products
- Backed by 5-year commercial warranty



Beach Sand  
030



Blackbrown  
523



Bluish White  
168



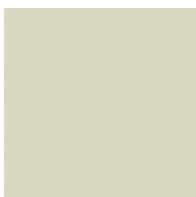
Clay  
527



Gray  
204



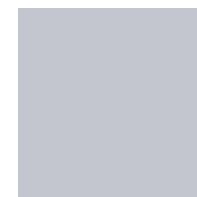
Gray Beige  
209



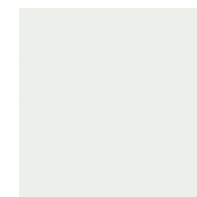
Off White  
244



Sandy Tan  
112



Sky Gray  
663



White  
401