



Mend Collection

Mannington
COMMERCIAL



Cover: Patchwork Panache (Modular) Handcraft Vibe 13606, **Carpet Installation** – Vertical Ashlar
Above: Renewed Refinement (Modular) Renewed Thread 11609, **Carpet Installation** – Vertical Ashlar





Tailored Mends (Modular) Renewed Thread Vibe 11610, **Carpet Installation** – Vertical Ashlar



Patchwork Panache (Modular) Renewed Thread Vibe 11610, **Carpet Installation** – Vertical Ashlar



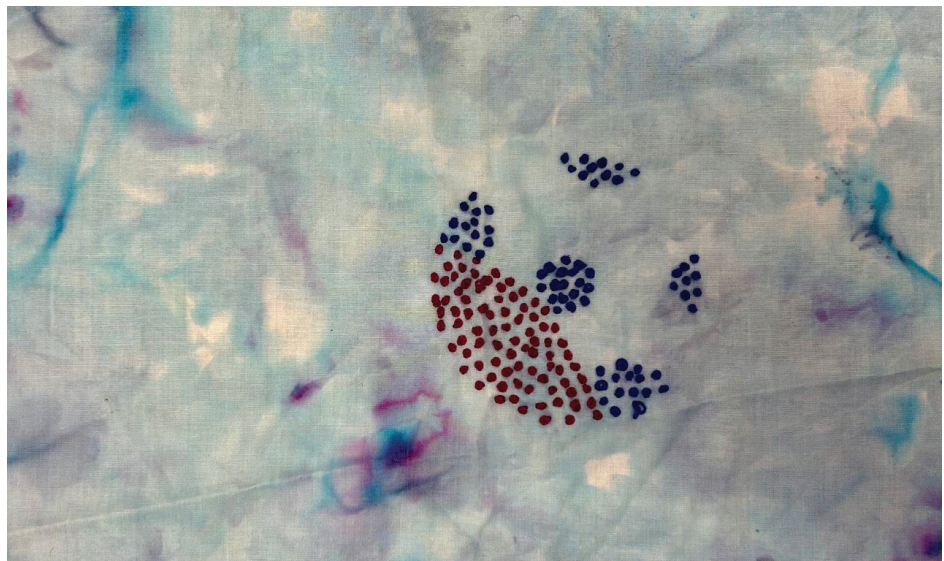
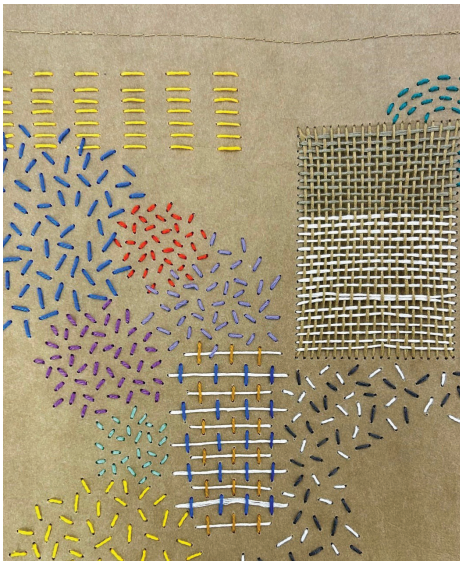
Patchwork Panache (Modular) Chic Revival 35615 and **Renewed Refinement** (Modular) Chic Revival 35615,
Carpet Installation – Vertical Ashlar



Tailored Mends (Modular) Renewed Thread 11609 and Tailor's Touch 95613, **Carpet Installation** – Vertical Ashlar

Breathe New Life Into Your Space

Inspired by the timeless practice of mending, Mend celebrates the beauty of imperfection and the craftsmanship required to breathe new life into cherished fabrics. This collection began as an exploration into the rich tapestry of mending art, which encouraged us to re-imagine how we approach design. The result is a collection that embraces authenticity, using layers of texture and color to transform flaws into a visually rich modern design for your space. In a world that often emphasizes flawless exteriors, Mend evokes a sense of warmth, nostalgia, and the timeless charm of handcrafted elegance.



The molecular strength of type 6,6 nylon delivers greater resilience against matting and resists abrasive wear, keeping carpet looking better longer.

Easier to Maintain

- ✔ XGUARD® Stain Resistant Technology provides long-term stain resistance.
- ✔ ColorSafe® Bleach Resistant Technology resists color fade-out from bleach spills.
- ✔ Moisture-barrier backings are built to withstand aggressive wet cleanings.

Sustainable Solutions

- ✔ Supported with third party verified EPDs and HPDs.
- ✔ Infinity® 2 Modular and rEvolve® II backings are NSF/ANSI 140 Gold Certified and contain recycled content.
- ✔ Recognizing the impact that the built environment can have on Earth's climate and health, Mannington Commercial is improving operations and offsetting cradle-to-gate embodied carbon by 105% on this collection, as part of our commitment to helping customers take positive action through their projects.

Backing Advantages

- ✔ Infinity® 2 and rEvolve® II Modular backings provide exceptional performance with a moisture barrier as well as superior tuft bind and dimensional stability with a limited lifetime warranty.
- ✔ rEvolve® II is a PVC-free modular backing. For additional backing options please visit our website.

TARR

- ✔ Mend Collection carpet was specifically designed with a 3.0 TARR rating for heavy use environments with substantial foot traffic. This includes conference rooms, open office areas and classrooms. Our TARR rating is tested and verified by an independent lab.

Proven by Third-Party Testing | Every carpet we make at Mannington Commercial is third-party tested and proven to exceed industry standards in appearance retention, texture retention, fire safety factors and static generation, and our modular carpet exceeds industry standards in dimensional stability—so you can be sure that the carpet you specify will perform for years to come.



No Moisture Testing Required*

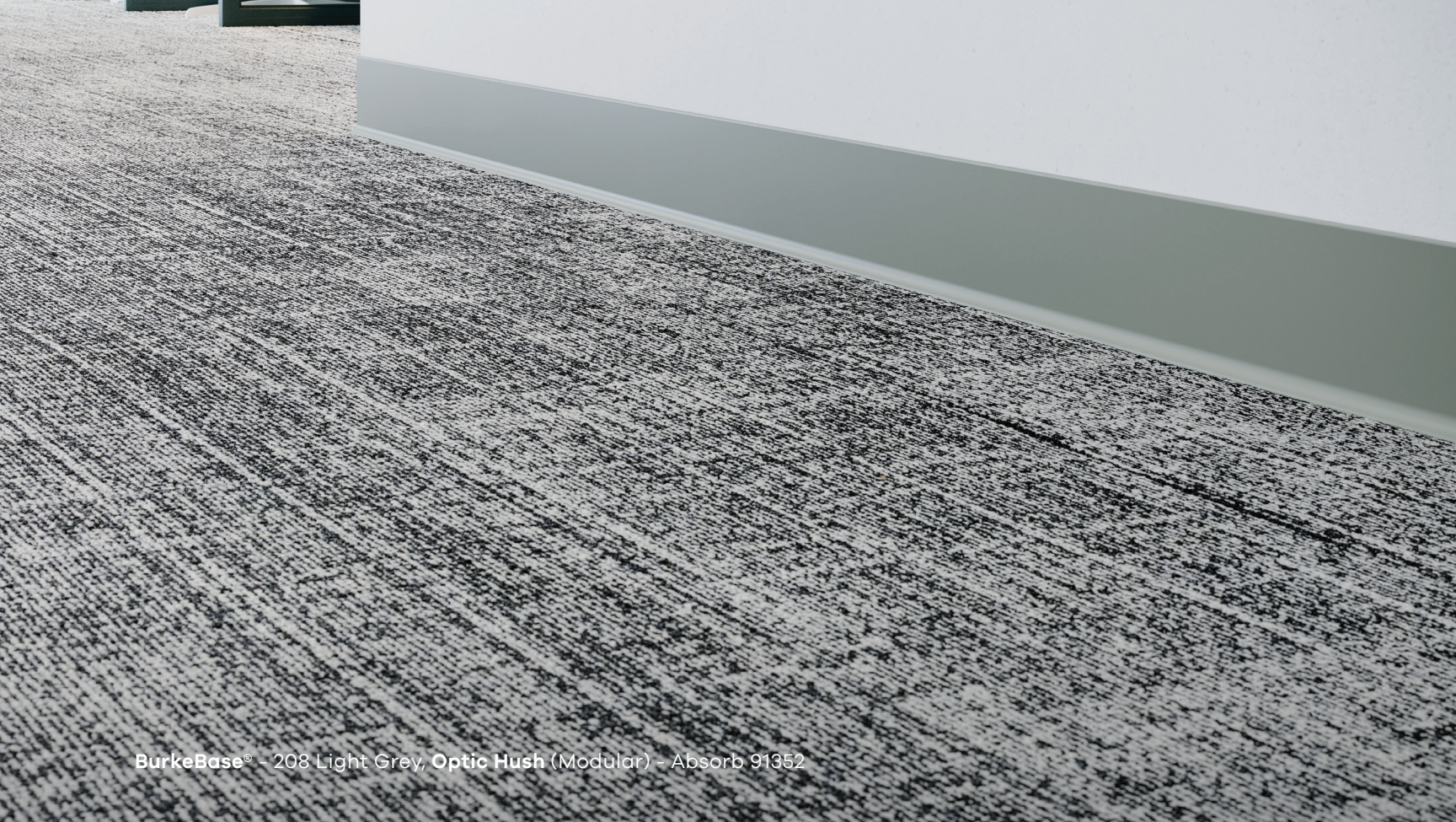
Solutions crafted for high-moisture conditions. Defeat moisture issues with carpet backings that do not require moisture testing*.

We have solutions for broadloom and modular carpet to make moisture worries evaporate. From backing options to adhesives to a dry installation system, explore solutions that defeat moisture concerns while enhancing the performance of your floor.



	Infinity 2 Pressure Sensitive Adhesive	XpressStep™ Spray Adhesive	FreLock Tabs	Integra-2 Adhesive	Ultra Adhesive
Infinity® 2 Modular Backing	✓	✓	✓		
Infinity® 2 MG Modular Backing	✓	✓	✓		
Infinity® 2 MG Cushion Modular Backing	✓	✓			
rEvolve® II PVC-Free Modular Backing	✓	✓			
Integra® HP Broadloom Backing				✓	
UltraBac® RE Broadloom Backing					✓

* Assumes intact vapor barrier, no standing water or stained concrete, no hydrostatic pressure, and for our broadloom backings (Integra® HP and UltraBac® RE) pH levels must never exceed 10. Please refer to our installation instructions for further details.



BurkeBase® - 208 Light Grey, Optic Hush (Modular) - Absorb 91352

Available Profile Heights	BurkeBase® Premium TS Molded 1/8"	BurkeBase® Type TP 1/8"	BurkeBase® Type TV 1/8"	BurkeBase® Type TV .080"
	4" (102 mm)	2.5" (64 mm)	2.5" (64 mm)	2.5" (64 mm)
	6" (152 mm)	4" (102 mm)	4" (102 mm)	4" (102 mm)
		4.5" (114 mm)	4.5" (114 mm)	6" (152 mm)
		6" (152 mm)	6" (152 mm)	
	Coved	Coved or Toeless	Coved or Toeless	Coved or Toeless

Warranty This product is backed by our Limited 5-Year Commercial Warranty.

Corners BurkeBase® Premium Type TS factory molded corners are available with 4" and 6" coved corners. Must be ordered at time of wall base order to ensure color match.

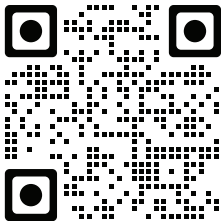
BurkeBase® Type TP/TV pre-formed corners are available in all profile heights. Must be ordered at time of wall base order to ensure color match.

Custom Colors Minimums apply.

Please make final selection for all colors from actual product samples.
For samples and information, visit manningtoncommercial.com or call 800.241.2262.

Mend Collection

Style	Sizes	Face Weight	Colors
Patchwork Panache	12 x 36 (30.48 X 91.44 cm)	19 oz/yd² (644 g/m²)	16
Renewed Refinement	12 x 36 (30.48 X 91.44 cm)	17 oz/yd² (576 g/m²)	8
Tailored Mends	12 x 36 (30.48 X 91.44 cm)	19 oz/yd² (644 g/m²)	16
Testing			
Dimensional Stability (Aachen Test)	Passes		
Electrostatic Propensity (AATCC 134)	Less than 3.0 kV		
Radiant Panel (ASTM E648)	≥ 0.45 watts/cm², Passes (Class 1)		
Smoke Density (ASTM E662)	≤ 450-Passes		
Methenamine Pill Test (ASTM D2859)	Passes		
Hexapod (ASTM D5252) TARR Rating	3.0		
Environmental Data			
NSF/ANSI 140 Certification	Infinity® 2 Modular - Gold / rEvolv0174 II Modular - Gold		
Recycled Content	Contains Recycled Content		
Indoor Air Quality	CRI Green Label Plus Certified		
Product Declarations	Third Party Verified EPD, HPD		
Carbon Offset	105% Cradle to Gate (A1 - A3), visit website for more information		
LEED Scoreboard	May Contribute to LEED credits: Building Product Disclosure & Optimization - EPDs Building Product Disclosure & Optimization - Sourcing Raw Materials Building Product Disclosure & Optimization - Material Ingredients; IEQc2 - Low Emitting Materials		
mindful MATERIALS	Visit mindfulmaterials.com for current transparency information.		
Manufacturing	Calhoun, Georgia (USA) - ISO 14001 Certified, +Vantage Vinyl Verified Silver		
Warranty			
	Limited Lifetime Wear & Backing		
	Limited 15-Year XGUARD® Stain Resistant		
	Limited 15-Year ColorSafe® Bleach Resistant		



View full collection specs.

- Specifications are based on averages from normal manufacturing tolerances. Such variations do not affect product performance.
- Protective chair pads are recommended under office chairs with roller casters to preserve appearance and avoid premature wear.
- As with all quality carpets, slight variation in color may occur from dye lot to dye lot.
- Backing or other materials may be changed without prior notice when shortages occur or when technological advancements provide improved product performance.
- This product is intended solely for use as an indoor floor covering and is not recommended or sold for any other purpose.
- The inherent characteristics of geometric linear patterns can result in double-dark or double-light lines at the seam and to some extent pattern run-off or bias. This is not a manufacturing defect, and as such, should be considered when selecting a modular carpet installation method.
- Please make your final selection from an actual swatch. To order samples, go to manningtoncommercial.com or call 800.241.2262