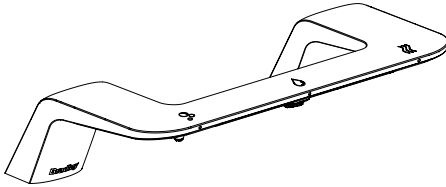


Service Parts Guide

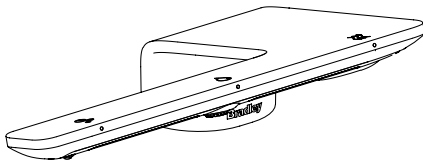


WB1

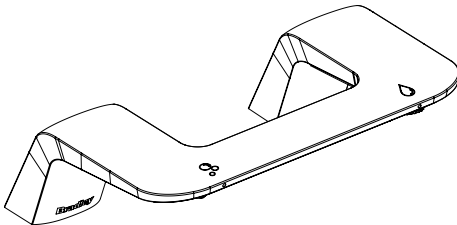
WashBar® WB1

WashBar® WB2

WashBar® Duo WBD1



WB2



WBD1

Table of Contents

Safety Information	2
WashBar Service Kits.	3
WashBar Components.	5
WBD1 Components.	9
Master Control Box	11
System Startup.	11
Electrical Components.	12
Aerator Kits.	12
Dryer Motor Components - Brushless Motor (WB1, WB2) . .	13
1-Station Valve Components and Variations.	14
2 & 3 Station Components and Variations.	15
Soap System Components – Top Fill Option.	16
Soap System Components – Bottom Fill Option.	17
Drilling Marking Templates.	18



Read the instructions in this manual before beginning installation. Save these instructions and refer to them for inspection, maintenance, and troubleshooting information.

For questions regarding the operation, installation, or maintenance of this product, visit bradleycorp.com or call 800.BRADLEY (800.272.3539).

Product warranties and parts information may also be found under “Resources” on our website at bradleycorp.com/customerservice/warranty.

Safety Information

Warning

Make sure that all water supply lines have been flushed and then completely turned off before beginning installation. Debris in supply lines can cause valves to malfunction.

Caution

A DC plug-in adapter (supplied by Bradley) should be used in conjunction with the Bradley supplied faucets. The DC plug-in adapter supplied by Bradley is 6V DC regulated. Direct connection to 120V/220V 50/60Hz could result in personal injury and will damage the sensor.

Important

Separate parts from packaging and make sure all parts are accounted for before discarding packaging material. If any parts are missing, do not begin installation until you obtain the missing parts.

When the faucet is mounted on a fixture with a stainless steel bowl, it is recommended that the bowl have a satin finish rather than a mirrored or highly polished finish.

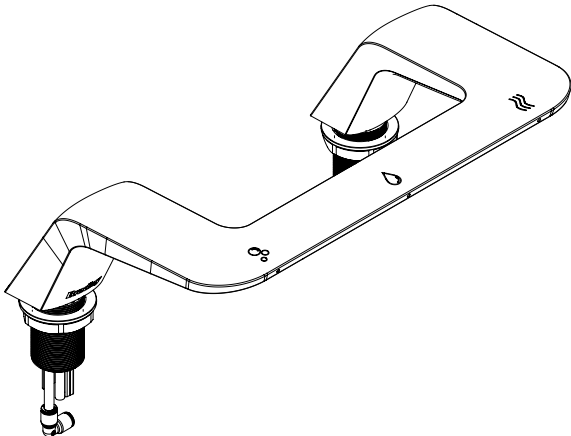
WashBar Maintenance Guide

For maintenance information, scan or click this QR code to view the [WashBar Maintenance Guide](#).



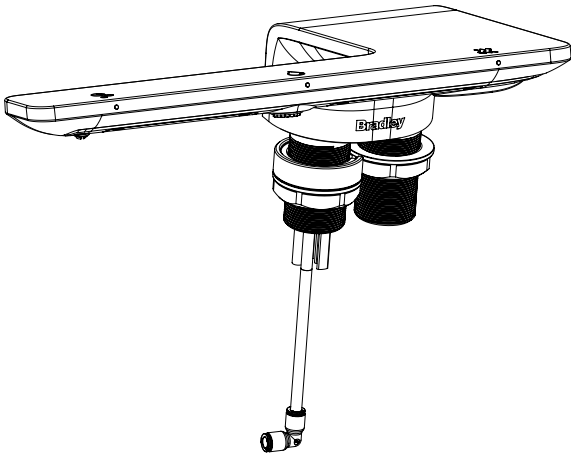
WashBar Service Kits

WB1



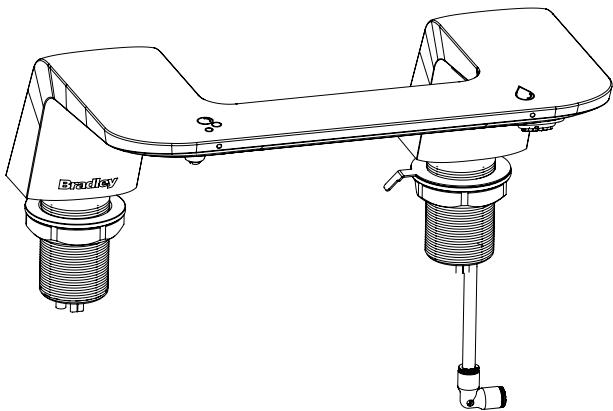
WB1 Complete Assembly <i>(Incl. parts list on page 5)</i>	WB1 Casting Kits <i>(replaces casting and LED Bar – requires reassembly of access plate and internal components)</i>
S53-351-PC	S65-506-PC
S53-351-BB	S65-506-BB
S53-351-BN	S65-506-BN
S53-351-BR	S65-506-BR
S53-351-BS	S65-506-BS
S53-351-BZ	S65-506-BZ

WB2



WB2 Complete Assembly <i>(Incl. parts list on page 7)</i>	WB2 Casting Kits <i>(replaces casting and LED Bar – requires reassembly of access plate and internal components)</i>
S53-355-PC	S65-505-PC
S53-355-BB	S65-505-BB
S53-355-BN	S65-505-BN
S53-355-BR	S65-505-BR
S53-355-BS	S65-505-BS
S53-355-BZ	S65-505-BZ


WBD1




WBD1 Complete Assembly <i>(Incl. parts list on page 9)</i>	WBD1 Casting Kits <i>(replaces casting and LED Bar – requires reassembly of access plate and internal components)</i>
S53-352-PC	S65-507-PC
S53-352-BB	S65-507-BB
S53-352-BN	S65-507-BN
S53-352-BR	S65-507-BR
S53-352-BS	S65-507-BS
S53-352-BZ	S65-507-BZ

Finish Type


- PC




Polished Chrome
- BB




Brushed Black Stainless
- BS




Brushed Stainless
- BZ



Brushed Bronze
- BR



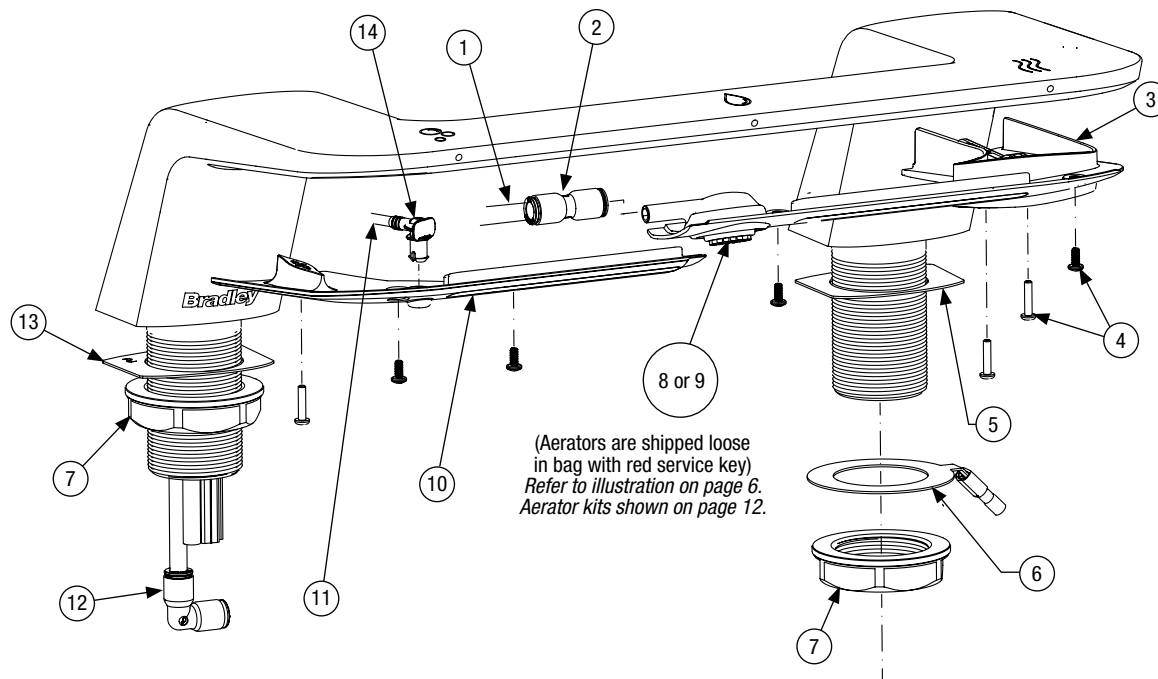
Brushed Brass
- BN



Brushed Nickel

WashBar WB1 Components

WB1



Complete Assembly Parts List

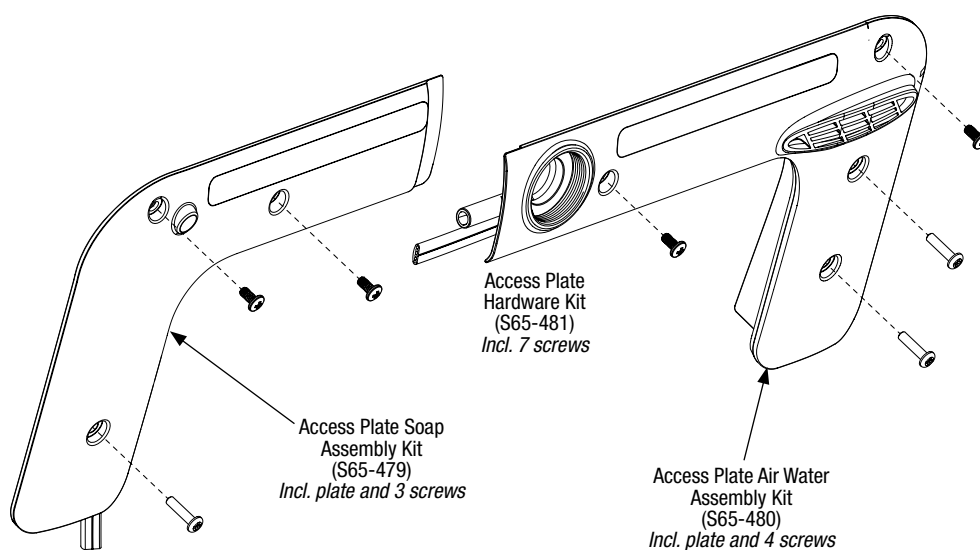
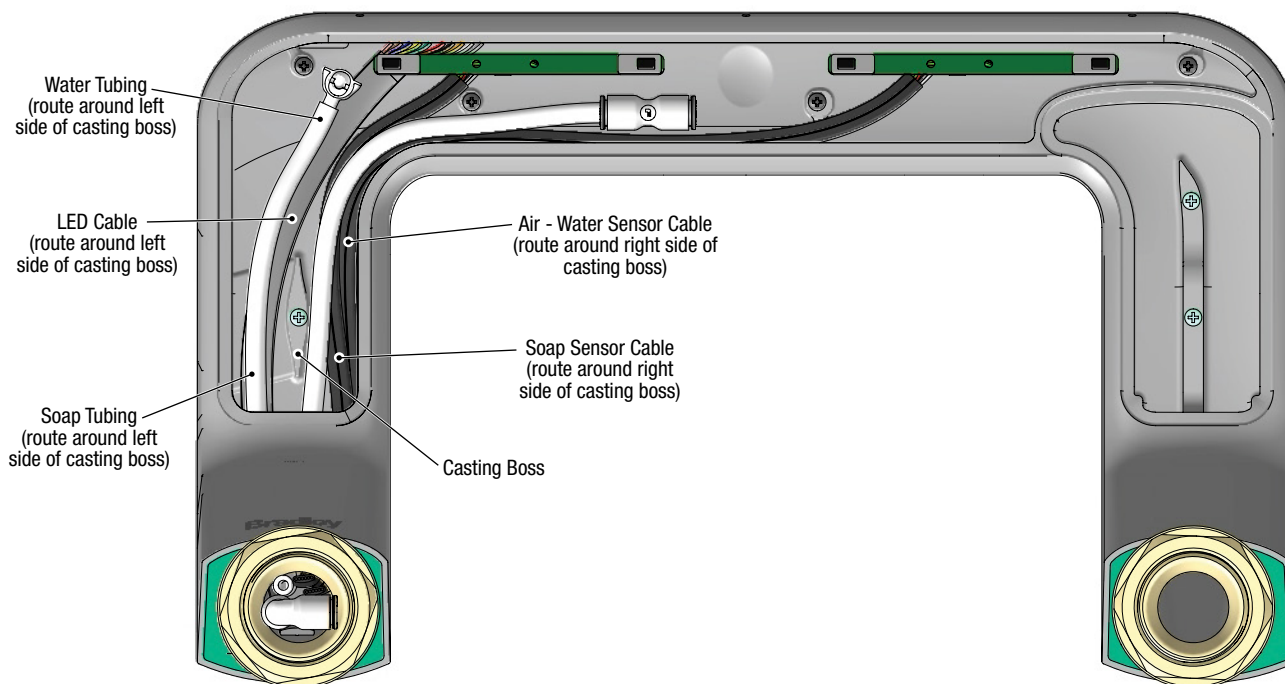
Item	Part No.	Description
1	269-547C	1/4" x 60 Tubing
2	269-624	Union Tube, 1/4" OD
3	S65-480	Access Plate Air Water Assembly Kit (Includes access plate and hardware) Refer to bottom illustration on page 6.
4	S65-481	Access Plate Hardware Kit (screws)
5	124-102	Gasket, WashBar Deck, Air
6	S65-493A	Ground Wire Assembly Kit 1/4" QC to Banana Plug
7	110-256	Nut, WashBar, 1-3/8-18
10	S65-479	Access Plate Soap Assembly Kit (includes plate and hardware) Refer to bottom illustration on page 6.
11	269-2522	Soap Tube 1/4" OD x 1/8" ID
12	269-2531	Union Elbow
13	124-101	Gasket, WashBar Deck, Soap Side
14	145-221	Elbow, 1/4" x 3.4 mm Hose Barb

Aerators (ordered separately)

Item	Part No.	Description
8	S05-175	Aerator .50 GPM
9	S05-215	Aerator .35 GPM

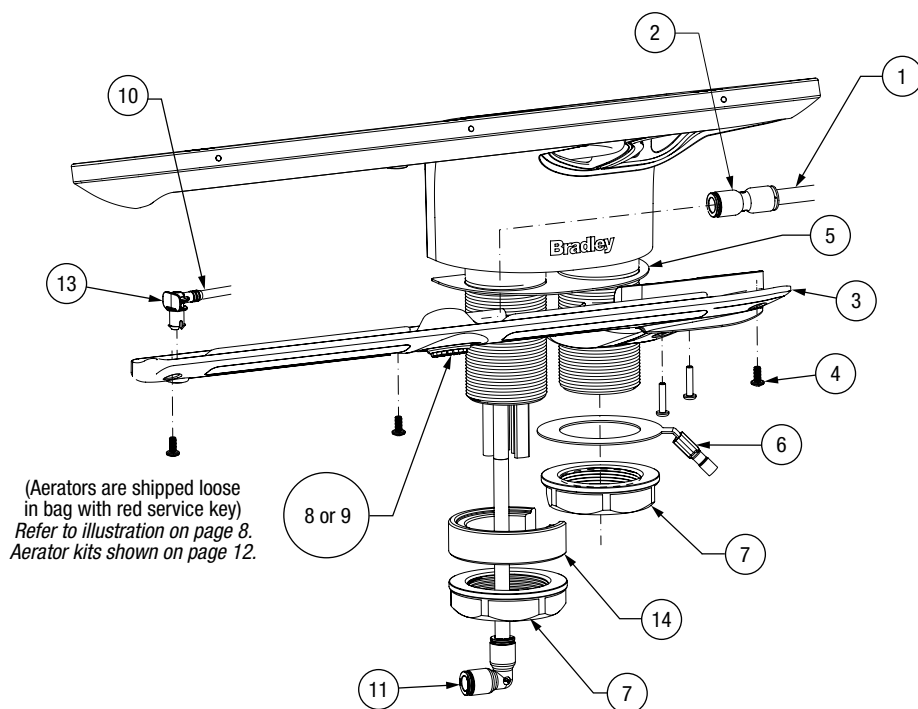
WB1 Tube Routing

- ✓ Access plate removed for clarity.
- ✓ Use the WB1 tube routing when servicing the water or soap tubing.



WashBar WB2 Components

WB2



Complete Assembly Parts List

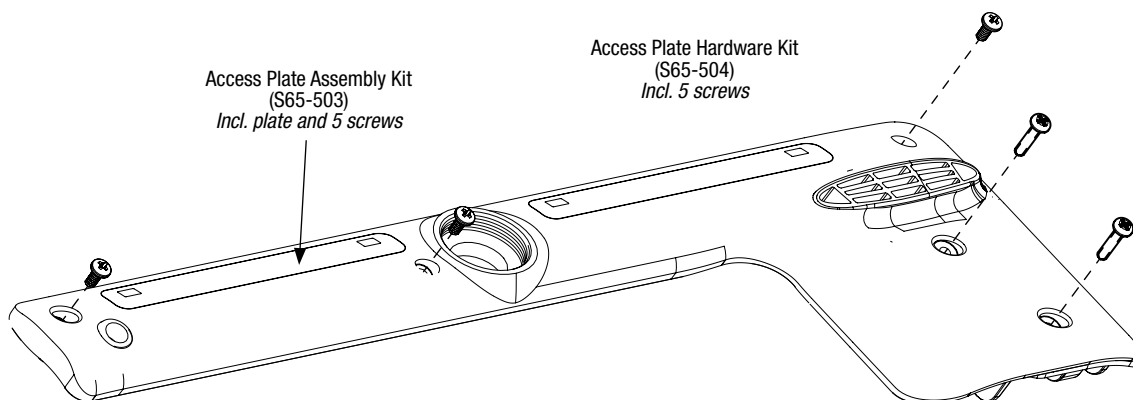
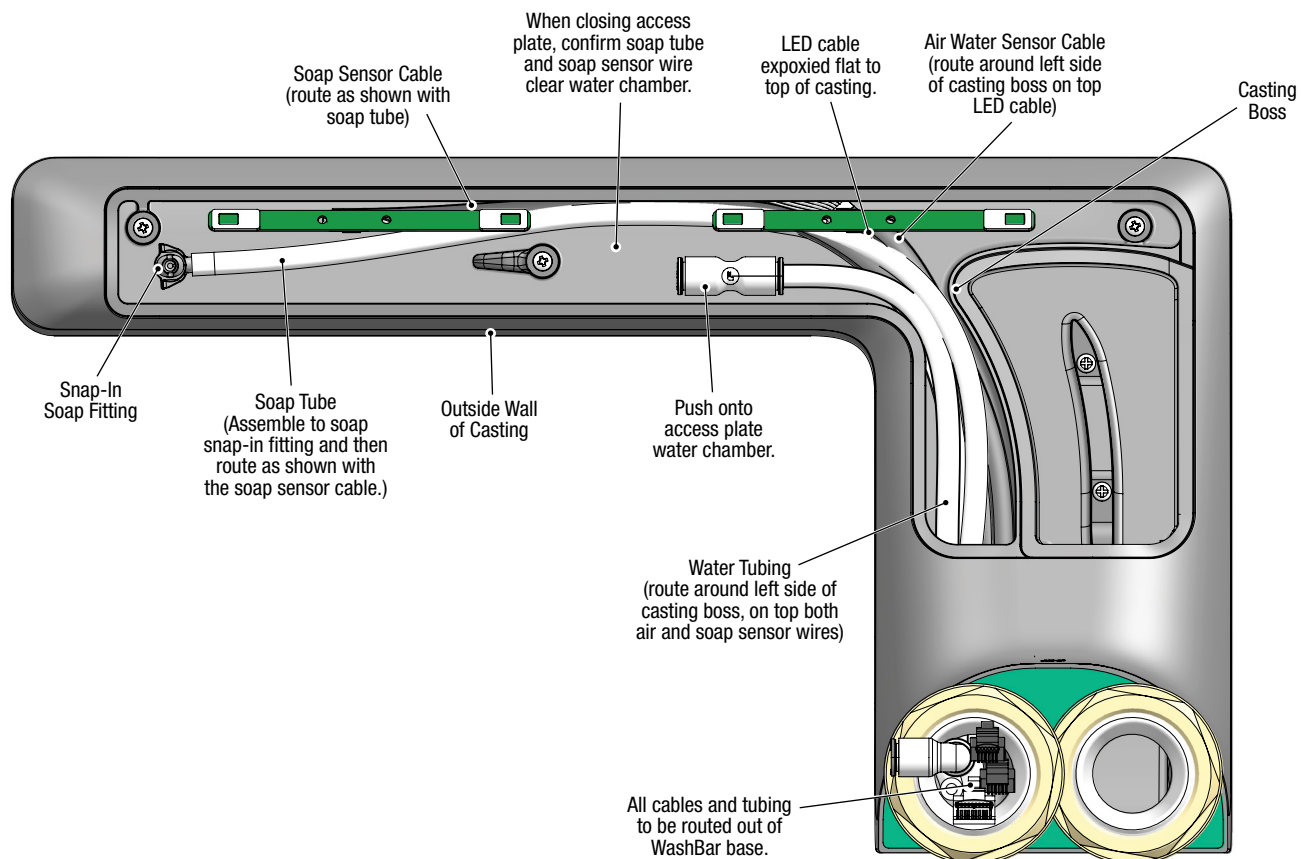
Item	Part No.	Description
1	269-547C	1/4" x 60 Soap Tubing
2	269-624	Union Tube, 1/4" OD
3	S65-503	Access Plate Assembly Kit (includes access plate and hardware kit) <i>Refer to bottom illustration on page 8.</i>
4	S65-504	Access Plate Hardware Kit (screws) <i>Refer to bottom illustration on page 8.</i>
5	124-114	Gasket, WashBar Deck, Air Side
6	S65-493A	Ground Wire Assembly Kit 1/4" QC to Banana Plug
7	110-256	Nut, WashBar, 1-3/8-18
10	269-2522	Soap Tube 1/4" OD x 1/8" ID
11	269-2531	Union Elbow
12	124-101	Gasket, WashBar Deck, Soap Side
13	145-221	Elbow, 1/4" x 3.4 mm Hose Barb
14	182-142	Spacer, Custom WB2

Aerators (ordered separately)

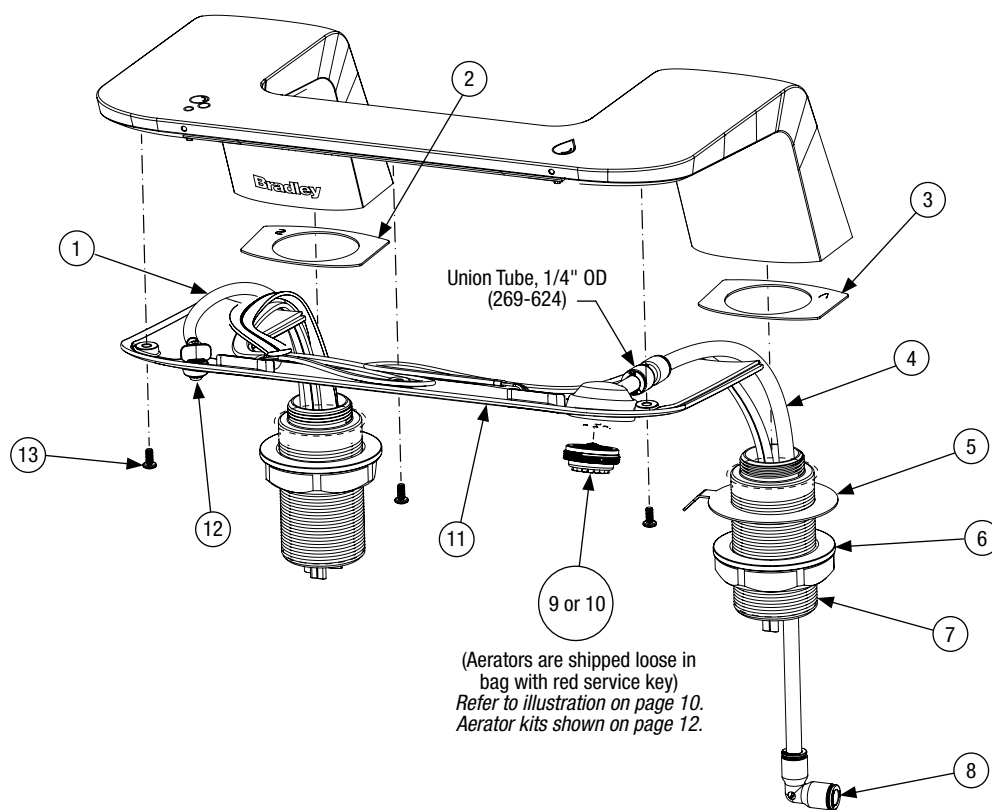
Item	Part No.	Description
8	S05-175	Aerator .50 GPM
9	S05-215	Aerator .35 GPM

WB2 Tube Routing (Use When Servicing Water or Soap Tubing)

- ☑ Access plate removed for clarity.
- ☑ Use the WB2 tube routing when servicing the water or soap tubing.



WBD1 Components



Complete Assembly Parts List

Item	Part No.	Description
1	269-547C	1/4" x 60 Soap Tubing
2	124-101	Gasket, WashBar Deck Soap Side
3	124-102	Gasket, WashBar Deck Faucet Side
4	269-547E	1/4" x 60 Water Tubing
5	230-035	WashBar Ground .25" QC
6	110-256	Nut, WashBar 1-3/8-18
7	109-055	Shank WashBar 1-3/8" OD
8	269-2531	Union Elbow 1/4"
11	S04-124	Access Plate and Hardware Kit (Refer to bottom illustration on page 10.)
12	145-221	Elbow 1/4" x 3.5 mm Hose Barb
13	160-418	Screw 4-40 x 1/2 Pan Mach PHI SS

Aerators (ordered separately)

Item	Part No.	Description
9	S05-175	Aerator .50 GPM
10	S05-215	Aerator .35 GPM

WBD1 Tube Routing (Use When Servicing Water or Soap Tubing)

- ✓ Access plate removed for clarity.
- ✓ Use the WBD1 tube routing when servicing the water or soap tubing.

Left Sensor Cable
(route around center screw boss, and then back to left side leg of casting base side of casting boss)

Confirm that LED wire is epoxied to casting as a strain relief.

Sensor Wires
(route around center screw boss and do not pinch wire when installing access plate)

Center Screw Boss

Right Sensor Cable
(route around center screw boss and then back to right side leg of casting base)

All cables & tubing to be routed out of WashBar base.

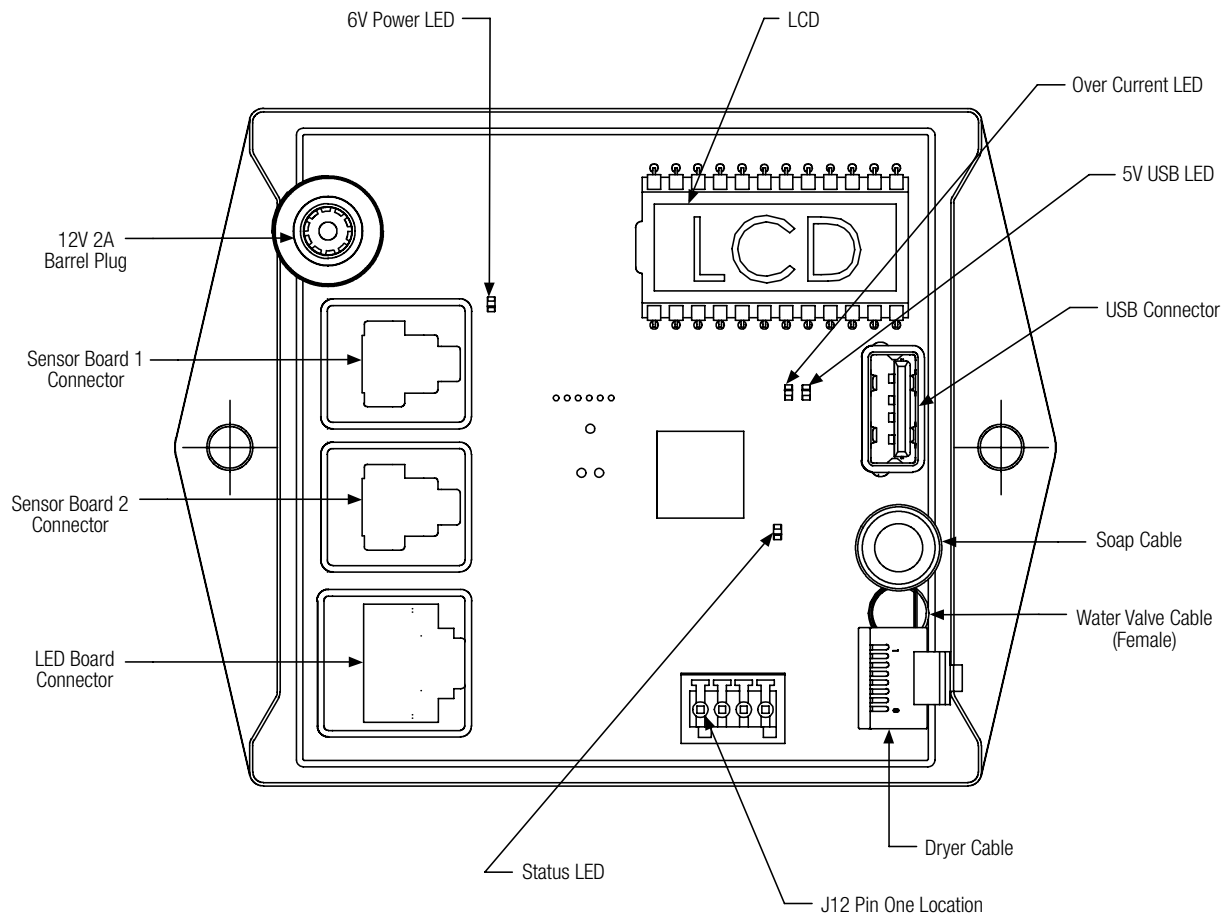
Access Plate Hardware Kit (S65-494)
Incl. 3 screws

Access Plate and Hardware Kit (S04-124)
Incl. plate and 3 screws

Master Control Box



[Scan or click to watch maintenance and troubleshooting videos for the WashBar!](#)



System Startup

- ☑ *Before powering on the WashBar, ensure that the area beneath it is free of any obstructions and the sensors are clear. When power is first supplied, the blower may briefly activate if it is present.*

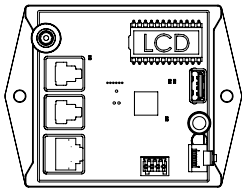
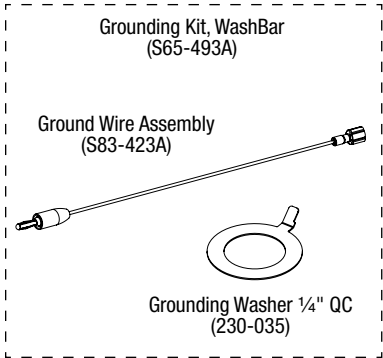
The first time the WashBar is powered up, there is a sequence of LEDs that will light up.

- Within 5-10 seconds of receiving power, the WashBar will cycle its LED lights RED, GREEN, and then BLUE. When the LEDs turn blue, the WashBar is in Standby/Idle Mode.

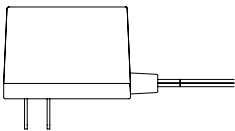
- ☑ *If any of the WashBar LEDs flash RED, check for sensor obstruction. After obstruction is removed or cleaned, the WashBar LEDs will return to blue indicating that the WashBar is in Standby/Idle Mode.*

- The power LED on the master control box will be GREEN indicating the unit has power.

Electrical Components



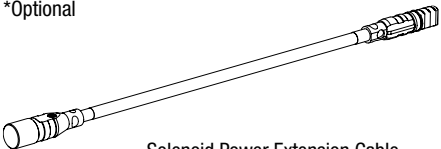
Master Control Box:
WashBars w/ dryer: S83-469
WashBars w/o dryer: S65-525
Both use the same hardware;
only the software differs and can be changed.
(Red circuit board replaces the old green one)



DC Power Adapter
(Brushed Motor Only)
(261-147)

For mounting screws use
#10 x 3/8" (P18-054)

*Optional

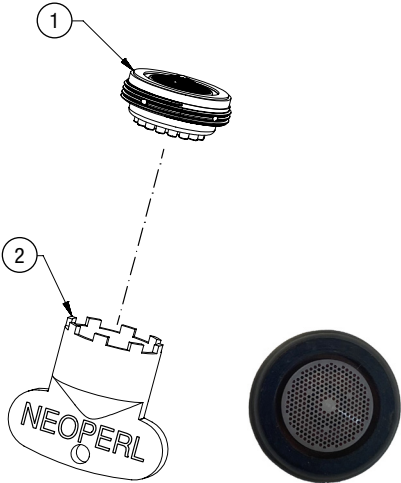
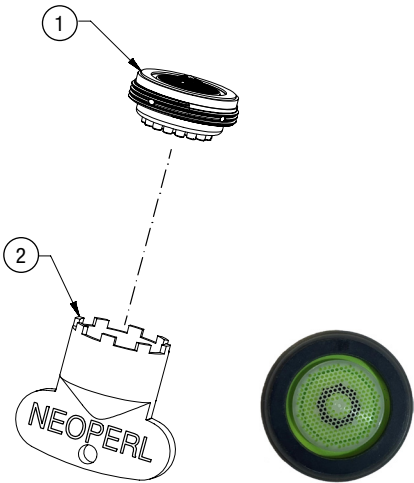


Solenoid Power Extension Cable
(Used on LVQD2 and LVQD3)
(251-023)



12V WashBar Power Harness
(Brushless Motor Only)
(251-042)

Aerator Kits



S05-175 Parts List

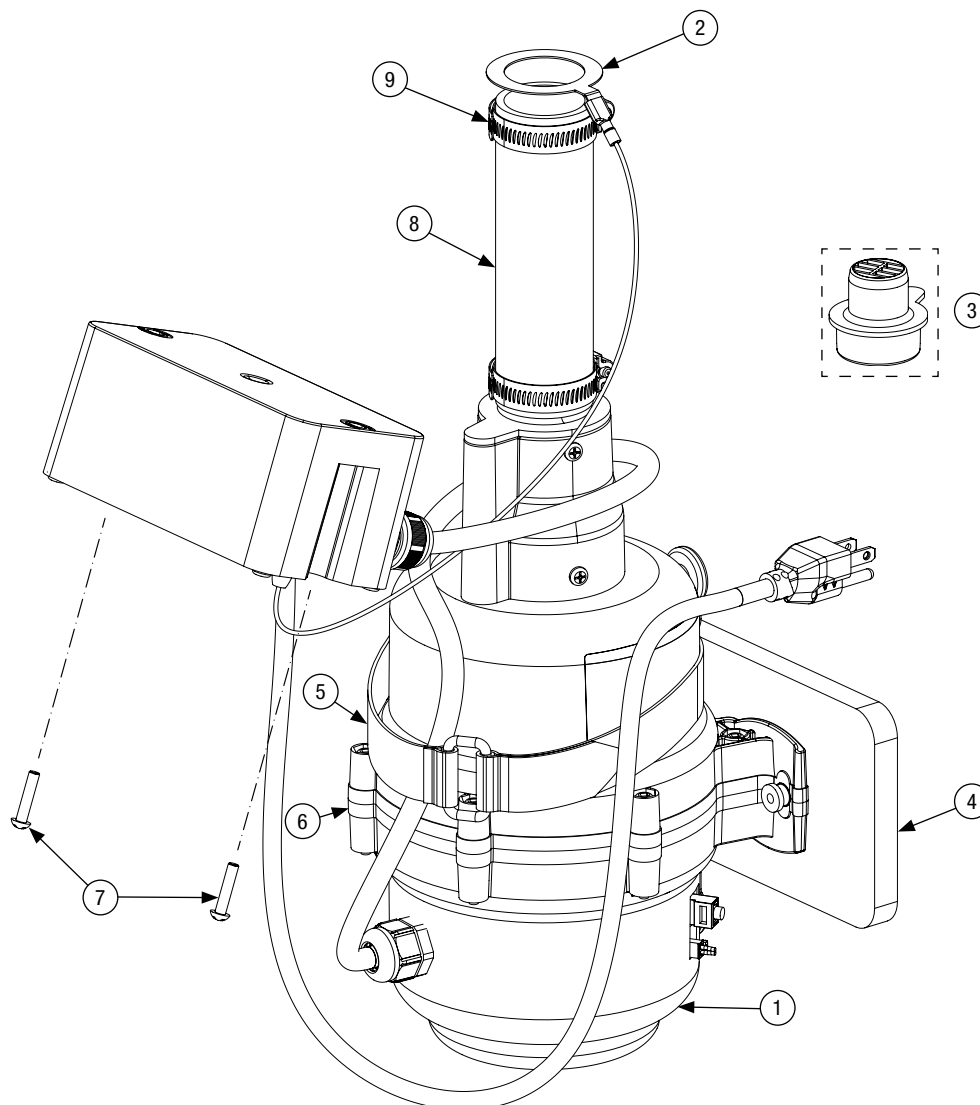
Item	Description
1	Aerator - .5 GPM (Green)
2	Red Service Key - Neoperl

S05-215 Parts List

Item	Description
1	Aerator - .35 GPM (Brown)
2	Red Service Key - Neoperl

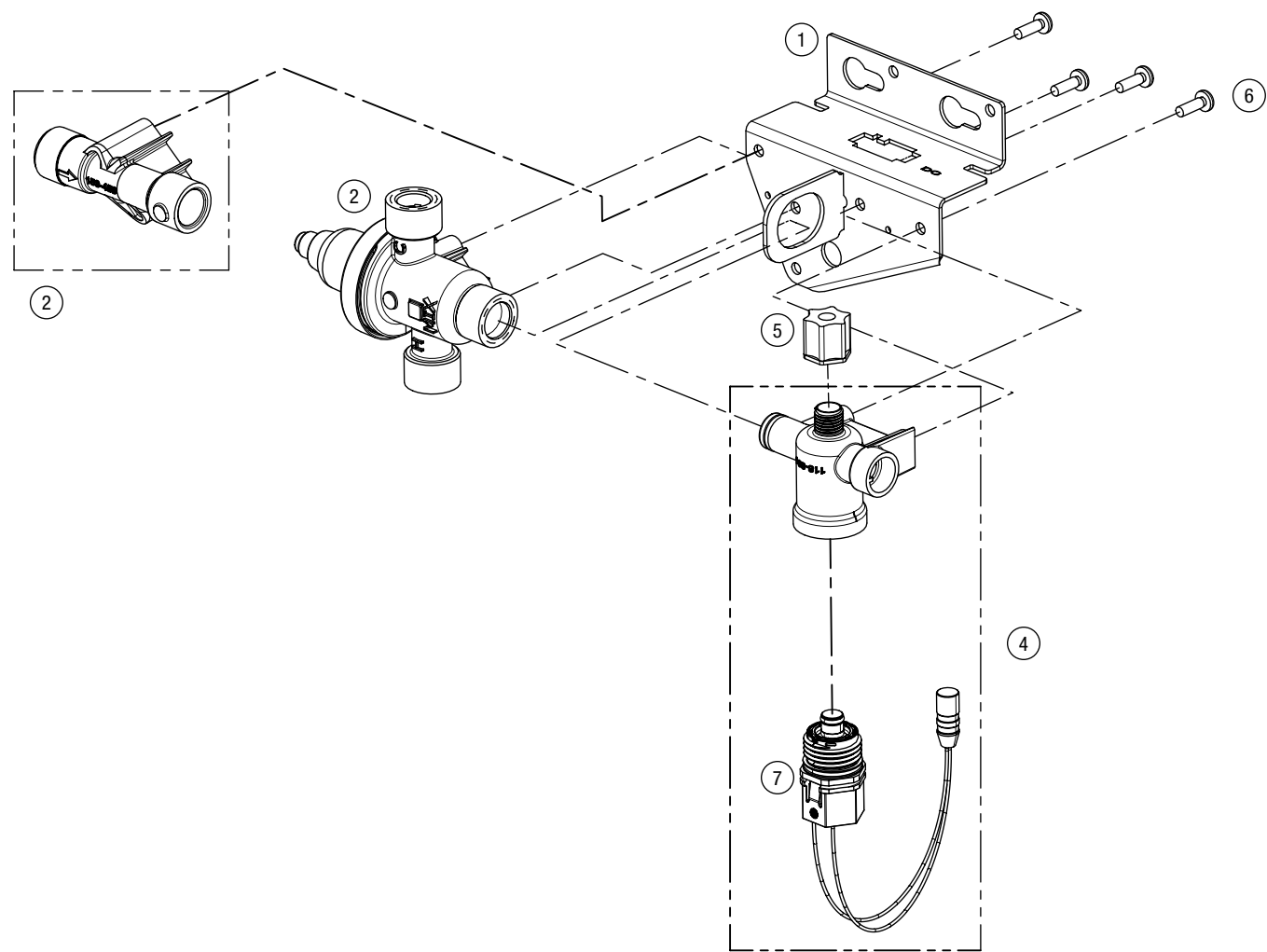
Dryer Motor Components - Brushless Motor (WB1, WB2)

(July 2023-Present)



Item	Part No.	Description
1	S39-863	Dryer Motor (Incl. items 3, 6 & 8)
2	S65-493A	Grounding Kit
3	S65-527	Exit Nozzle, Brushless Blower
4	124-105	Pad, Vibration Reducer 4" x 10"
5	269-2574	Cable Tie, Hook and Loop w/Buckle 36"
6	-----	Blue Plastic Spacer (Used to identify brushless blower)
7	160-563	Screw 10-24 x 7/8" RD Mach PH 18-8 SS
8	269-2561A	5.5" x 1-1/4" Flex PVC Pipe Schedule 40
9	269-678	Hose Clamp 2-1/4" SS

1-Station Valve Components and Variations



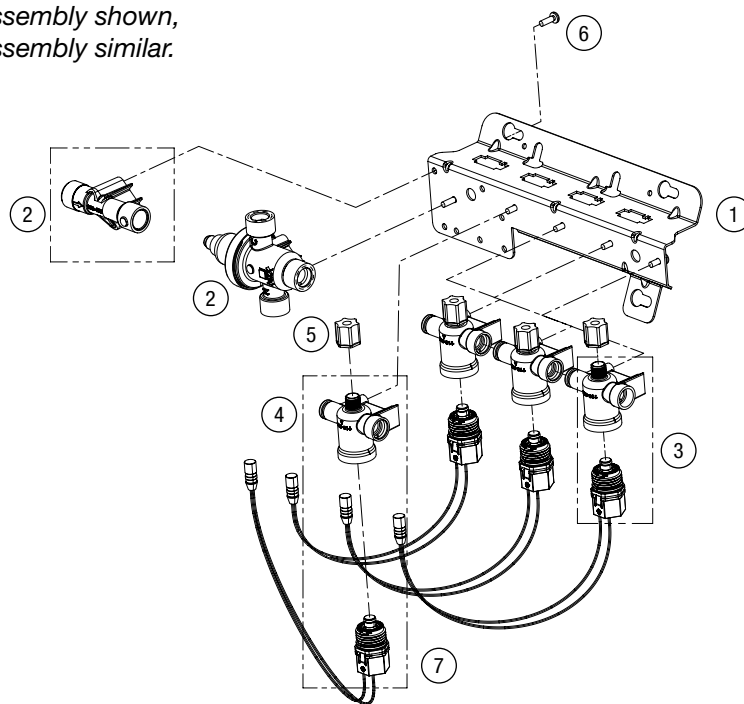
Parts List

1-Station Valve S08-2401TL & S08-2401TMA			
Item	Qty	Part No.	Description
1	1	S39-861	Weldment, Plate - DC Valve
2	1	S01-526	Thermostatic Lead-Free Valve Assembly
2 TL	1	S39-804	Lead-Free Adaptor Assy Valve Inlet w/Strainer
4	1	S07-067-DCS	Service - Solenoid Valve, 12VDC Closed Body 1/4" Tube
5	1	110-231	Compression Nut, 1/4" Tube
6	4	160-447	Screw 8-16 x 1/2"
7	1	S27-352	Cartridge 12VDC Mono Stable

Hose Prepack	
Part No.	Description
S45-2730	Prepack Hose/90 Stop Lead-Free TMA
S45-2731	Prepack Hose/90 Stop Lead-Free TL

2 & 3 Station Components and Variations

☒ 3-station valve assembly shown,
2-station valve assembly similar.

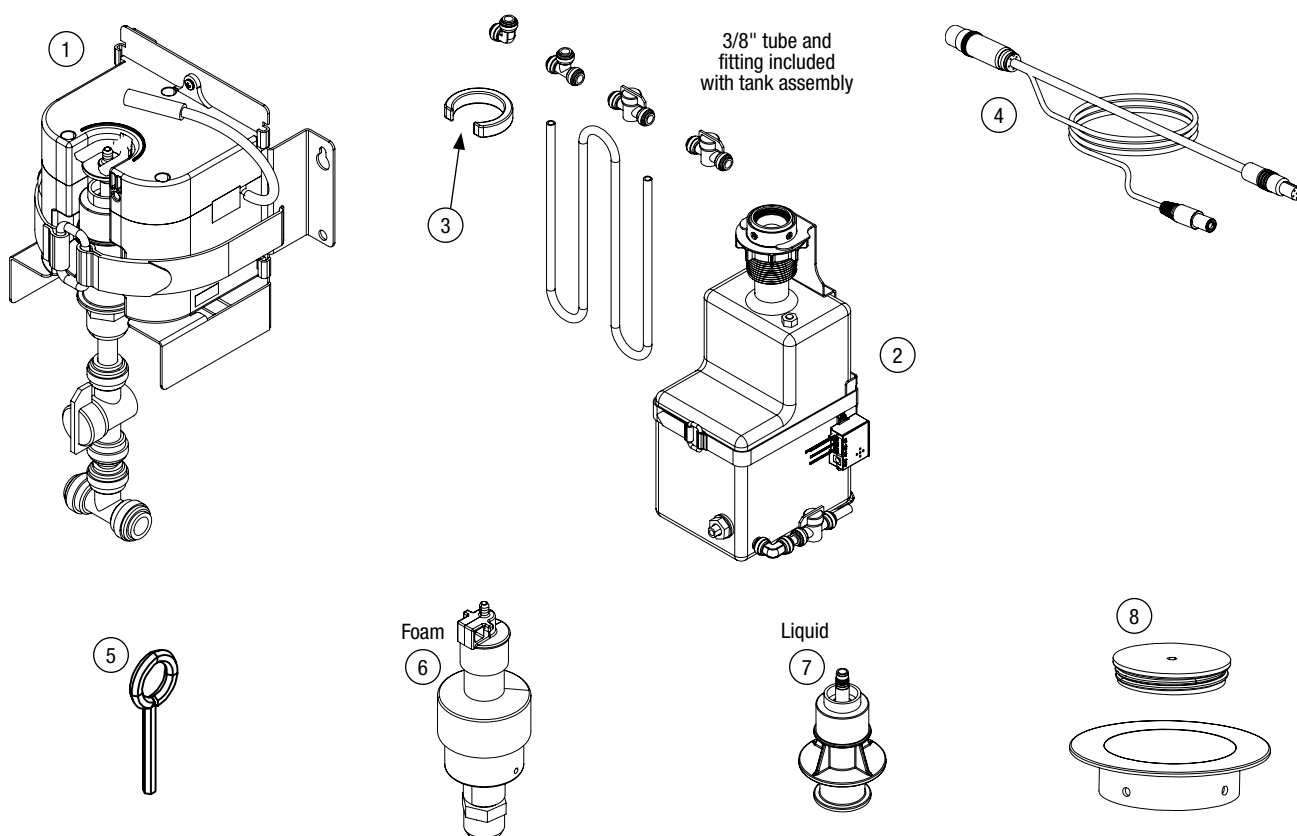


Parts List

2-Station Valve S08-2402TL & S08-2402TMA			
Item	Qty	Part No.	Description
1	1	140-1178-DC	Weldment, Plate - DC Valve
2 TMA	1	S01-526	Lead-Free Valve Assembly
2 TL	1	S39-804	Lead-Free Adaptor Assy Valve Inlet w/Strainer
3	1	S07-067-DCS	Service - Solenoid Valve, 12VDC Closed Body 1/4" Tube
4	1	S07-067A-DCS	Solenoid Valve, 12VDC Thru Body 1/4" Tube
5	2	110-231	Compression Nut, 1/4" Tube
6	4	160-447	Screw 8-16 x 1/2"
7	2	S27-352	Cartridge 12VDC Mono Stable
3-Station Valve S08-2403TL & S08-2403TMA			
1	1	140-1178-DC	Weldment, Plate - DC Valve
2 TMA	1	S01-526	Lead Free Valve Assembly
2 TL	1	S39-804	Lead Free Adaptor Assy Valve Inlet w/Strainer
3	1	S07-067-DCS	Service - Solenoid Valve, 12VDC Closed Body 1/4" Tube
4	2	S07-067A-DCS	Solenoid Valve, 12VDC Thru Body 1/4" Tube
5	3	110-231	Compression Nut, 1/4" Tube
6	5	160-447	Screw 8-16 x 1/2"
7	3	S27-352	Cartridge 12VDC Mono Stable

Hose Prepack	
Part No.	Description
S45-2730	Prepack Hose/90 Stop Lead-Free TMA
S45-2731	Prepack Hose/90 Stop Lead-Free TL

Soap System Components – Top Fill Option



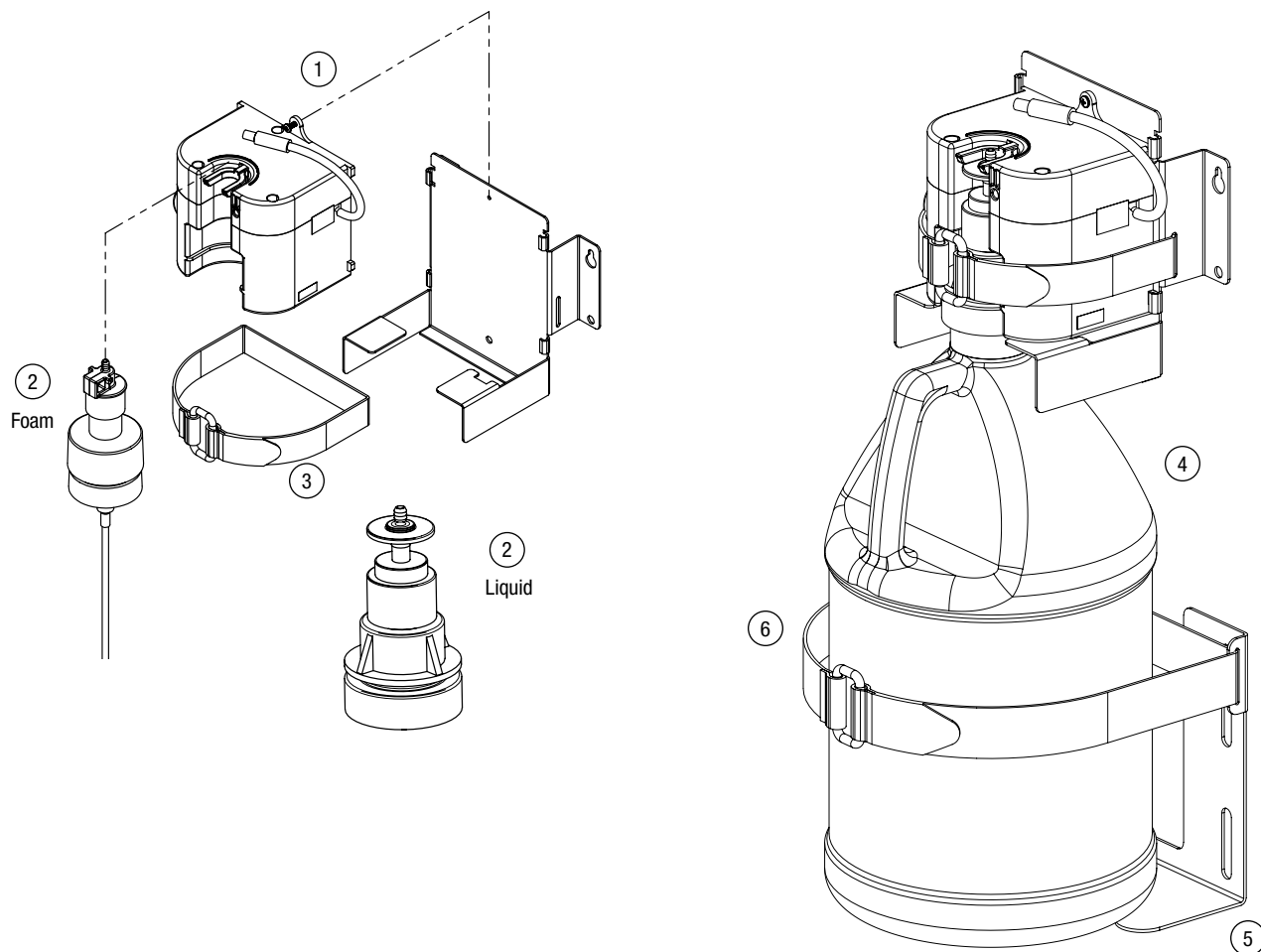
Parts List

Item	Part No.	Description
1 Liquid	S52-170	WashBar Top Fill Multi-Feed Control Box Liquid (Includes pump assembly)
1 Foam	S52-171	WashBar Top Fill Multi-Feed Control Box Foam (Includes pump assembly)
2	A14-034-XX	Top Fill Soap Tank Assembly (Includes items 2, 3, 4 & 8) (Refer to Finish Type below)
3	269-2844	Spacer
4	251-039	Multi-Feed Power Harness
5	P15-530	Allen Key, 3 mm (Qty 5)
6	P15-587	WashBar Top Fill Soap Pump (Foam w/Tube)
7	P15-565	WashBar Top Fill Soap Pump (Liquid w/Tube)
8	A14-027-XX	Multi-Feed Cap and Ring (Refer to Finish Type below)

Finish Type

PC		Polished Chrome
BB		Brushed Black Stainless
BS		Brushed Stainless
BZ		Brushed Bronze
BR		Brushed Brass
BN		Brushed Nickel

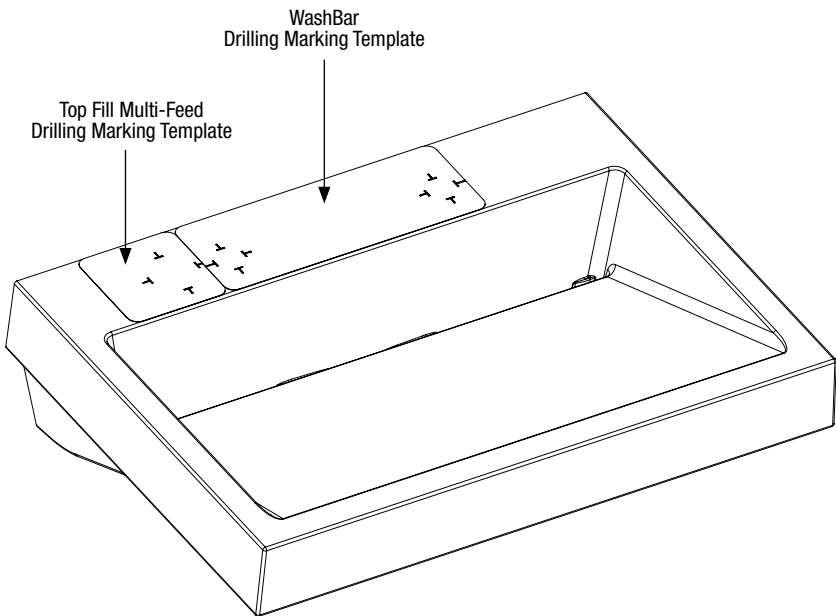
Soap System Components – Bottom Fill Option



Parts List

Item	Part No.	Description
1 Liquid	S52-168	Soap ASM. Liquid Pump (Includes Motor Controller, Pump, and Motor Controller Bracket)
1 Foam	S52-169	Soap ASM Foam Pump (Includes Motor Controller, Pump, and Motor Controller Bracket)
2 Liquid	269-2518	Soap Pump, Tube, Liquid
2 Foam	269-2519	Soap Pump, Tube, Foam
3	269-2795	Strap, Hook and Loop
4	S65-528	Soap Tank Jug, 1 Gallon and Cap
5	140-1171	Bracket, Soap Tank
6	269-2574	Cable Tie, Hook and Loop w/Buckle 36" – Bottom Fill Option

WashBar & Top Fill Multi-Feed Drilling Marking Templates



Parts List WashBar Drilling Marking Templates

Part	Description
269-2977	WB2 WashBar Template
269-2976	WB1 WashBar Template
269-2978	WBD1 WashBar Duo Template

Parts List Top Fill Multi-Feed Drilling Marking Templates

Part	Description
269-2974	WB2 Top Fill Multi-Feed Template
269-2973	WB1 Top Fill Multi-Feed Template
269-2975	WBD1 Top Fill Multi-Feed Template