



A WATTS Brand

LVSD2 Verge® Wash Basin – LVS-Series

Key Features

- Sophisticated design integrates a linear open concept with personal space
- Single piece cast design eliminates caulk lines and seams
- Basins currently available in polished Evero® Classic cast quartz; an Evero Matte cast quartz option coming soon
- Standard system comes complete with mounting, access panel, drain assembly, and plumbing connections
- Compatible with Verge™ deck-mounted soap dispensers and faucets

Specifications

Accommodates one to two users at a time. The unit handles washroom traffic quickly and economically, while providing each user with personal space. The Verge® Wash Basin is designed with standard lavatory spacing positioned on 30" centers and is available in Evero Classic - Geo Series or Pearl Series, or Evero Matte - Mason Series basin material.

Product Compliance

Listed by IAPMO R&T to

- Uniform Plumbing Code (UPC)
- National Plumbing Code of Canada
- International Plumbing Code (IPC)
- LVSD2 Evero Classic & Evero Matte: IGC 156 and the requirements of CSA B45.5/IAPMO Z124 and ASME A112.18.1/CSA B125.1
- LVSD2 Evero Matte: IGC 156 and the requirements of CSA B45.8/IAPMO Z403



Complies with

- ADA
- ICC/ANSI 117.1
- TAS
- NSF/ANSI 372



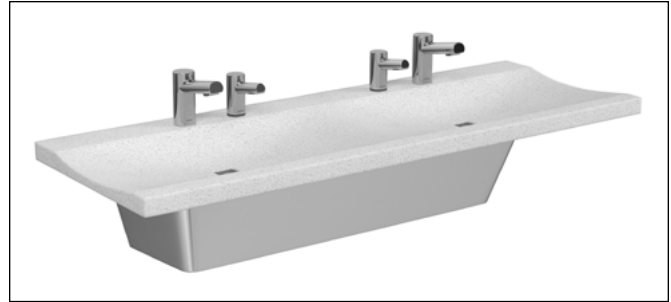
Listed by UL Environment to

- GreenGuard Gold



Sustainability

- Evero Classic and Evero Matte participate in the mindfulMATERIALS library



Finishes

Click on any color swatch to view as a larger image.

- Polished Chrome
- Brushed Black Stainless*
- Brushed Stainless*
- Brushed Bronze*
- Brushed Brass*
- Brushed Nickel*

*PVD Finishes, see PVD Finishes section.

* PVD Finishes

Physical Vapor Deposition is an intricate, environmentally friendly finishing process that molecularly bonds the finish to the faucet, creating a very hard, durable surface that will not corrode, discolor, or tarnish.

Compatible Bradley Products

[Verge Coordinated Soap and Faucet](#)

Serves the American Disabilities Act and ICC/ANSI 117.1 guidelines, citations 306, 308, 309.4, 606.4, 606.5 when installed according to these requirements.

Consult local codes and standards.

This plumbing fixture is designed for hand washing only. It is not intended to dispense water for human consumption through drinking or for preparation of food or beverages.



A WATTS Brand

LVSD2

Verge® Wash Basin – LVS-Series

Construction

Basin

The basin is constructed of either the natural quartz surface Evero Classic - Geo or Pearl Series, or the natural stone-like quartz surface Evero Matte - Mason Series.

[Evero Classic - Geo Series](#) is a polished natural quartz surface made from a blend of bio-resin resin, natural quartz, granite, and other exotic minerals.

[Evero Classic - Pearl Series](#) is a polished natural quartz surface made of bio-resin resin, sea shells, and natural quartz.

[Evero Matte - Mason Series](#) is a matte natural stone-like quartz surface made from a blend of bio-resin resin and a unique mixture of extra fine grade quartz.



Variations in the natural stone color, pattern, size, shape, and shade are inherent. Due to these unique characteristics, please expect subtle shade variations when units are installed adjacent to each other.

Access Panel

Minimalistic panel is composed of decorative 300 series stainless steel. Water supplies, valves, waste assembly and other optional items are concealed within the panel. The panel requires only one person for installation and removal.

Support Bracket

Bracket design allows for flexible stud or wall blocking anchor locations. Eliminates the need for in-wall carriers. IAPMO certified to meet or exceed ANSI load requirements.

Faucet Options

Choose from our 0.35 gpm (1.30 Lpm), 0.05 gpc (0.25 Lpc) or 0.50 gpm (1.90 Lpm), 0.09 gpc (0.35 Lpc) Verge Faucets – Crestt, Metro, Linea, or Zen Series. Also available are 4" centerset and centershank faucet drillings for faucets by others. To maximize handwashing space and minimize splashing, Bradley recommends a faucet reach between 4" and 6". Dimension is measured from shank centerline to aerator centerline. Optional 4" centerset trim plates are available for additional vandal resistance.

Soap Dispensers

Choose from our Verge Deck-Mounted Soap Dispensers – Crestt, Metro, and Linea Series. Dispensers can be arranged as personal soap (dispensers next to each faucet) or shared soap (dispensers in between faucets). See pages 8 and 9 for drilling locations. Soap drillings available for soap by others.

Please visit <https://www.bradleycorp.com/maintenance/soap-dispensers> for soap recommendations.

Strainer and Drain Assembly System

Strainer and drain assembly system comes complete with plungable 300 series stainless steel strainers, tailpiece and polypropylene P-trap. Optional chrome-plated P-trap available.

Accessibility

Accessibility Code	Rim Height (maximum)	Notes
ADA	33½" (851)	At least one basin must meet dimensional requirements and have proper reach, knee, and toe clearance.
ADA/JUV Juvenile ADA	30½" (775)	At least one basin must meet dimensional requirements and have proper reach, knee, and toe clearance.
CSA Canadian Standards Association	33½" (851)	
OBC Ontario Building Code	33" (838)	



A WATTS Brand

LVSD2

Verge® Wash Basin – LVS-Series

Models (Must select one)		Faucet Activation Type (select one)	
Model	Description	R	Touch-Free Activation ⁴
LVSD2	Verge Wash Basin – LVS-Series, Two-Station	NONE	No Activation ⁵
Standard Selections (Must select one from each category)		Water Supply Type (select one)	
Country of Installation (select one)		T	Thermostatic Mixing Assembly (supply hoses and shut-offs included)
C1	United States or Canada	L	Single Tempered Line Assembly (supply hoses and shut-offs included)
Material Type (select one)		Flow Control Type ³ (select one)	
EC	Evero Classic – Polished Finish	3	0.35 gpm (1.30 Lpm) Silicone Tip, Multiple Individual Laminar Flow Streams
EM	Evero Matte – Matte Finish	5	0.50 gpm (1.90 Lpm) Silicone Tip, Multiple Individual Laminar Flow Streams
Color of Evero® Bowl (select one)		Faucet Finish Type ³ (select one)	
NOTE: Click on any swatch to view as a larger image.		PC	Polished Chrome
<i>Evero Classic - Geo Series ¹</i>		BB	Brushed Black Stainless
ANDORRA	Andorra	BS	Brushed Stainless
ANTARCTICA	Antarctica	BZ	Brushed Bronze
ARUBA	Aruba	BR	Brushed Brass
BLACK-SEA	Black Sea	BN	Brushed Nickel
DENALI	Denali	<i>Grid strainer will always have a stainless steel finish.</i>	
GLACIER	Glacier Bay	Faucet Power Supply (select one)	
KALAHARI	Kalahari	AC	AC Power ^{4 6}
<i>Evero Classic - Pearl Series ¹ (available at an additional charge)</i>		BA	Battery – 4x AA alkaline batteries included per faucet ⁴
AKOYA	Akoya	NONE	No Power Supply ⁵
BLACK-MOON	Black Moon		
<i>Evero Matte - Mason Series ²</i>			
BLACK ONYX	Black Onyx		
CINDER	Cinder		
DESERT CLAY	Desert Clay		
LIMESTONE	Limestone		
Faucet Type (select one)			
S53-3100	Verge Faucet – Crestt Series		
S53-3300	Verge Faucet – Metro Series		
S53-3500	Verge Faucet – Linea Series		
S53-3700	Verge Faucet – Zen Series ³		
S53-3100-P	Verge Faucet – Crestt Series, Includes Trim Plate ¹¹		
S53-3300-P	Verge Faucet – Metro Series, Includes Trim Plate ¹¹		
S53-3500-P	Verge Faucet – Linea Series, Includes Trim Plate ¹¹		
S53-3700-P	Verge Faucet – Zen Series, Includes Trim Plate ¹¹		
4" Set	4" Centerset (1¼" Drilling Only)		
SHANK	Centershank (1¼" Drilling Only)		
NFD	No Faucet Drilling		

- ¹ Available with Material Type EC only.
- ² Available with Material Type EM only.
- ³ Zen Series soap dispenser is not available with LVS Series lavatories.
- ⁴ Available with faucet selection only.
- ⁵ Available with faucet drilling only.
- ⁶ AC power supply will include either individual AC plug-in adapter or 4-way AC splitter assembly depending on configuration.
- ⁷ Available with soap dispenser selection only.
- ⁸ Available with soap dispenser drilling only.
- ⁹ Available with Verge soap dispensers only.
- ¹⁰ SSD is available with Crestt Soap Dispenser or Soap Drilling Only (SDD).
- ¹¹ Trim plate finish will match Faucet Finish for PC, BB & BS. All other faucet finishes will receive a PC trim plate.



A WATTS Brand

LVSD2

Verge® Wash Basin – LVS-Series

Standard Selections (continued)

Soap Dispenser Type (select one)

6-3100	Verge Deck-Mounted Soap Dispenser – Crestt Series ⁴
6-3300	Verge Deck-Mounted Soap Dispenser – Metro Series ⁴
6-3500	Verge Deck-Mounted Soap Dispenser – Linea Series ⁴
SDD	1-3/8" Soap Drilling Only
NSD	No Soap Dispenser/No Drilling

Soap Location Type (select one)

SSD	Shared Soap Drilling – located in-between faucets (1 drilling) ¹⁰
PSD	Personal Soap Drilling – next to each faucet (2 drillings)

NOTE: When selecting SSD, the soap dispenser is located above the elevated section of the basin. When selecting PSD, the right station soap dispenser is located to the left of the faucet. Refer to page 5 for soap drilling locations.

Soap Activation Type (select one)

R	Touch-Free Activation ⁷
NONE	No Activation ⁸





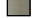
Soap Type ⁷ (select one)

F	Foam Soap
L	Liquid Soap

Soap Fill System ⁷ (select one)

T	Single (top fill at spout)
----------	----------------------------

Soap Dispenser Finish Type ⁹ (select one)

PC	 Polished Chrome
BB	 Brushed Black Stainless
BS	 Brushed Stainless
BZ	 Brushed Bronze
BR	 Brushed Brass
BN	 Brushed Nickel

Soap Power Supply (select one)

AC	AC Power ^{7 6}
BA	Battery – 4x D-cell batteries included per dispenser ⁷
NONE	No Power Supply ⁸

Access Panel Type (select one)

STAIN	Stainless Steel
--------------	-----------------

Waste Assembly Type (select one)

IW-POLY	Polypropylene (1 P-Trap per station)
IW-CHROME	Chrome-Plated (1 P-Trap per station)

¹ Available with Material Type EC only.

² Available with Material Type EM only.

³ Zen Series soap dispenser is not available with LVS Series lavatories.

⁴ Available with faucet selection only.

⁵ Available with faucet drilling only.

⁶ AC power supply will include either individual AC plug-in adapter or 4-way AC splitter assembly depending on configuration.

⁷ Available with soap dispenser selection only.

⁸ Available with soap dispenser drilling only.

⁹ Available with Verge soap dispensers only.

¹⁰ SSD is available with Crestt Soap Dispenser or Soap Drilling Only (SDD).

¹¹ Trim plate finish will match Faucet Finish for PC, BB & BS. All other faucet finishes will receive a PC trim plate.



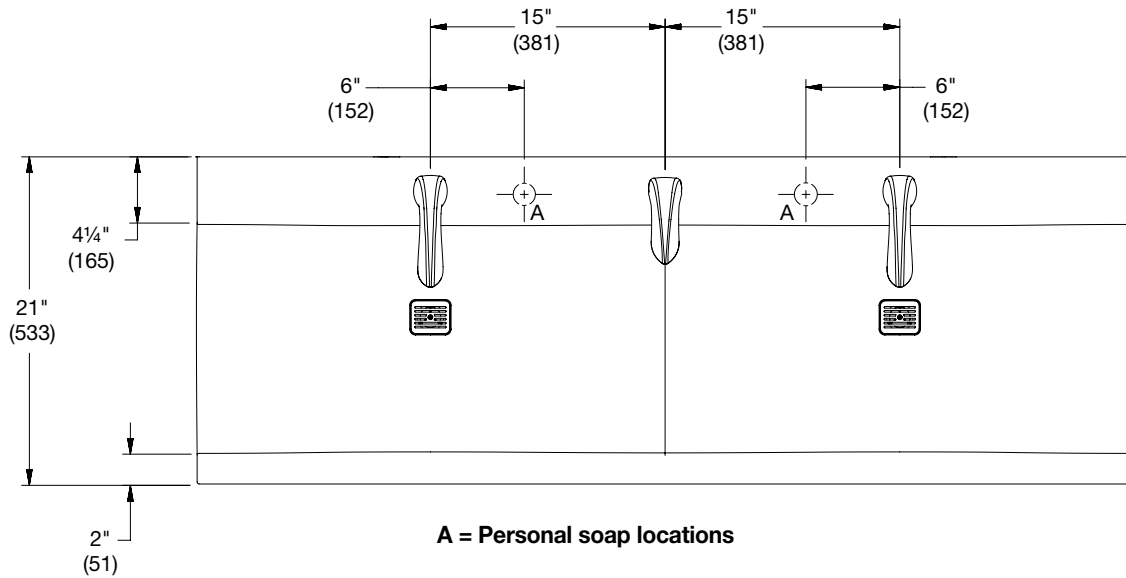
A WATTS Brand

LVSD2 Verge® Wash Basin – LVS-Series

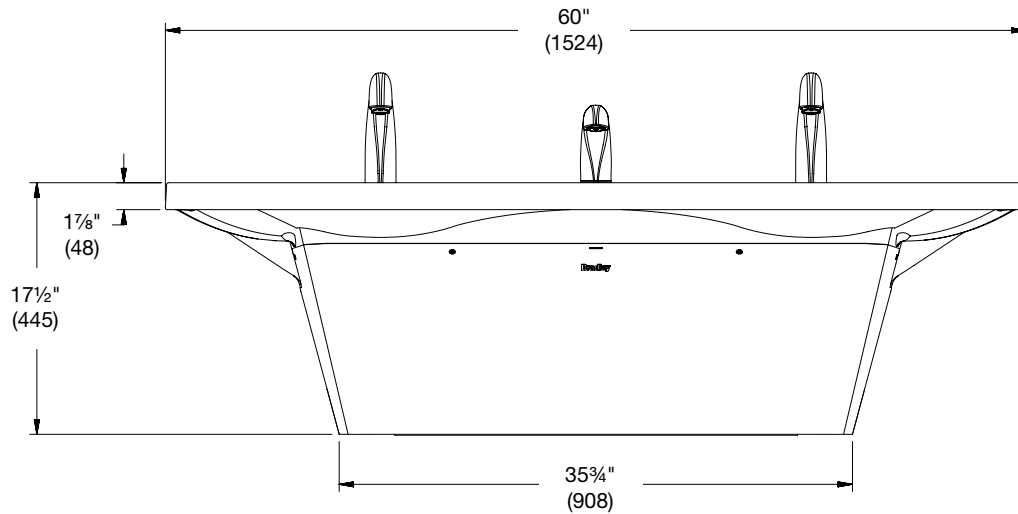
Dimensions for LVSD2 Verge Wash Basin (Shown with Crestt Series Faucet & Soap)

(mm)

Top View



Front View



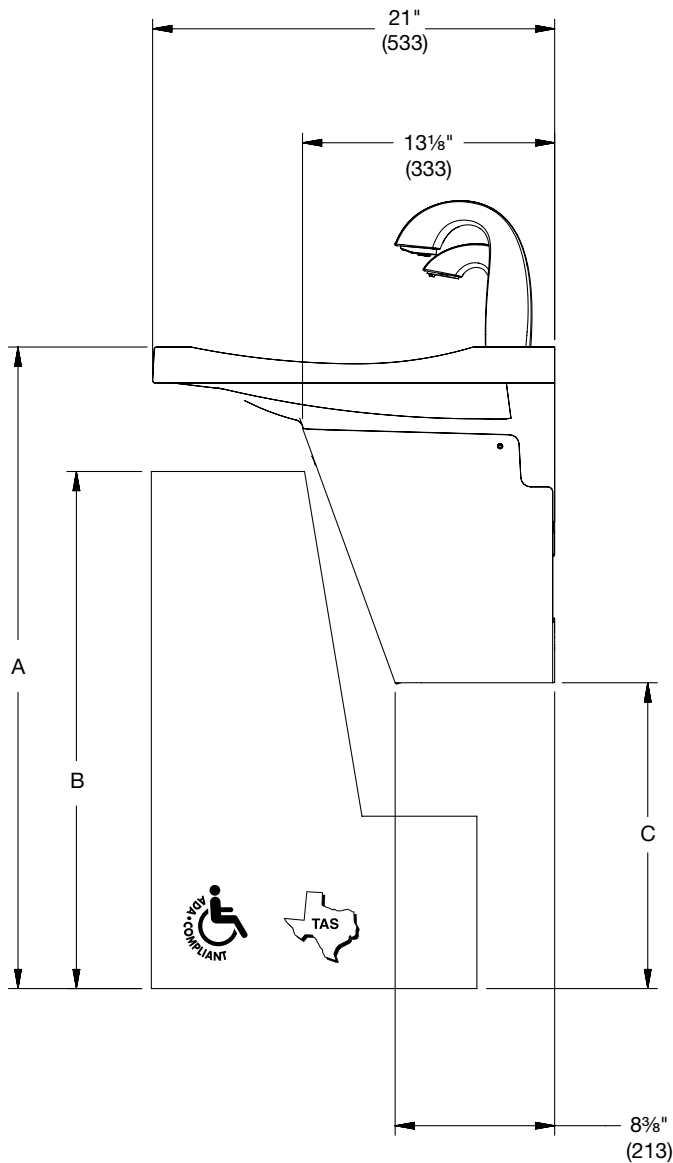


A WATTS Brand

LVSD2 Verge® Wash Basin – LVS-Series

Dimensions for LVSD2 Verge Wash Basin (mm)

Side View



	ADA/TAS Standard Height	ADA/TAS Juvenile Height (Children 6-12 years)	CSA Standard Height	OBC Standard Height
Dim A	33½" (851)	30½" (787)	33½" (851)	33" (838)
Dim B	27" (686)	24" (610)	29 5/8" (752)	28 15/16" (735)
Dim C	15 15/16" (405)	13 7/16" (341)	16 5/16" (414)	15 7/16" (391)



A WATTS Brand

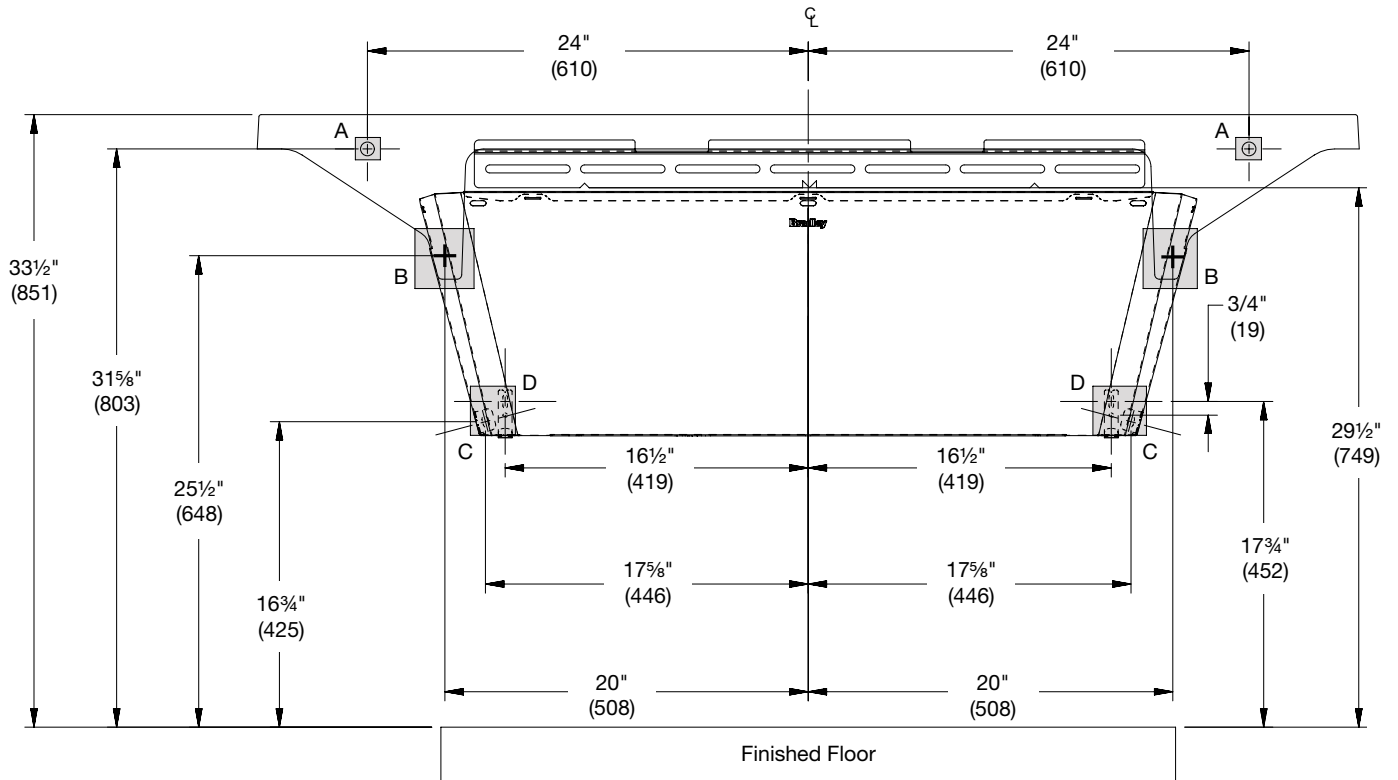
LVSD2 Verge® Wash Basin – LVS-Series

Structural Rough-Ins for LVSD2 Verge Wash Basin

(mm)

⚠ WARNING Ensure bowl is completely seated in the wall bracket and securely fastened to the wall at point A.

- ☒ Mounting for Standard ADA and TAS height shown.
- ☒ Points A, B, C, and D (highlighted in gray) require sufficient backing compliant with local building codes.



CODE	DESCRIPTION	QTY.
A	Install (1) 3/8" wall anchor with a minimum pull-out force of 1,000 lb per local codes at locations shown.	2
B	Provide structural backing compliant with local building codes.	2
C	Install wall anchor with a minimum pull-out force of 100 lb per local codes at locations shown for fold-up access panel option.	2
D	Install wall anchor with a minimum pull-out force of 100 lb per local codes at locations shown for swing-down access panel option.	4

RIM HEIGHT	VERTICAL HEIGHT ADJUSTMENTS	FIXTURE STYLE
33 1/2"	No Adjustment	Standard Height ADA, TAS, and CSA
30 1/2"	Subtract 3"	Juvenile ADA and TAS
32 1/2"	Subtract 1"	AODA
33"	Subtract 1/2"	OBC



A WATTS Brand

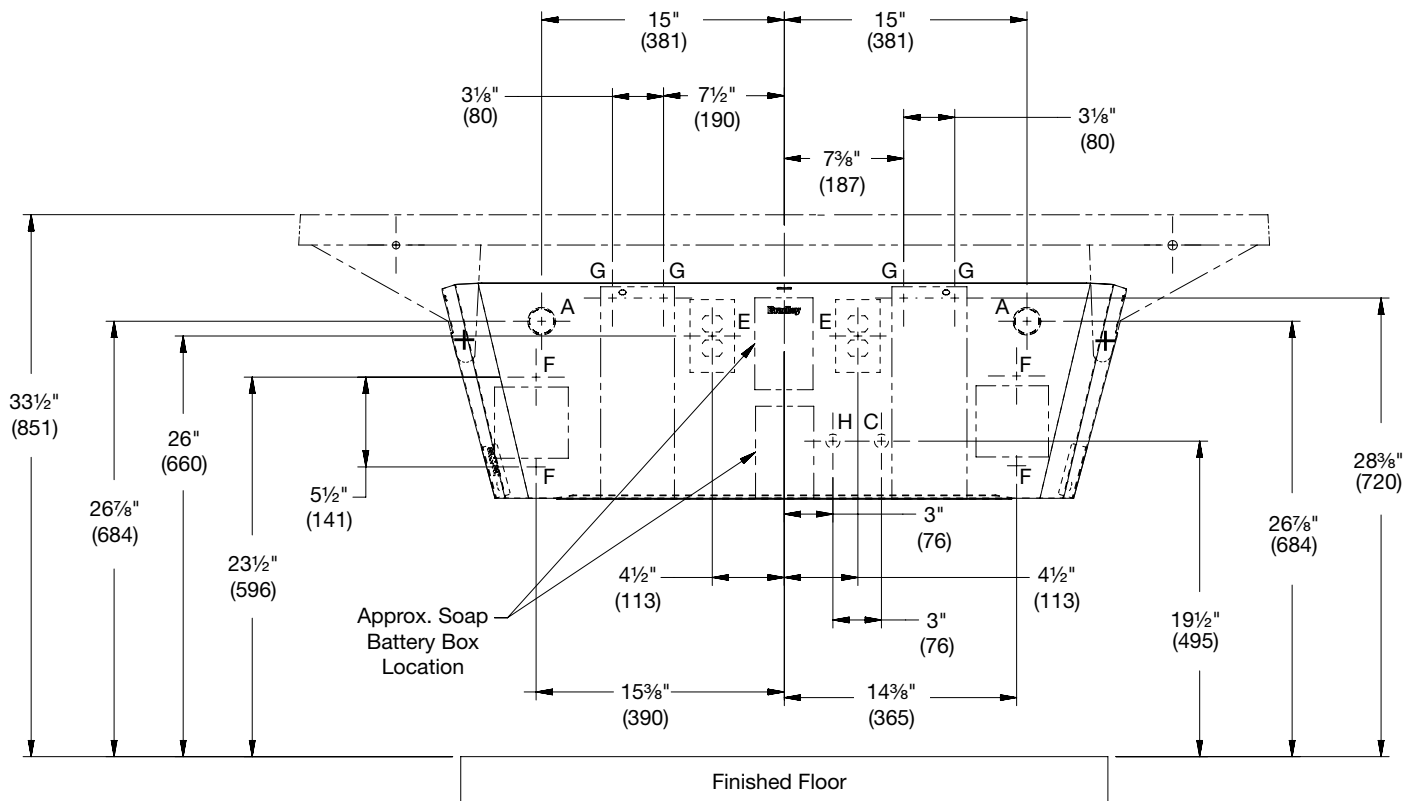
LVSD2 Verge® Wash Basin – LVS-Series

Plumbing and Electrical Rough-Ins for LVSD2 Wash Basin - Personal Soap

(mm)



Mounting for Standard ADA and TAS height shown.



CODE	DESCRIPTION	QTY.
A	1-1/2" NPT Drain, Stub-out 2" from wall, individual waste option	2
H,C	1/2" Nominal (5/8" O.D. Comp.) Hot/Cold supplies, Stub-out 2" from wall	1
E	110V GFI protected electrical outlet (AC faucet and soap only)	2
F	#10 Anchors for Faucet Control Box Installation	4
G	#10 Anchors for Soap Tank Installation	2



A WATTS Brand

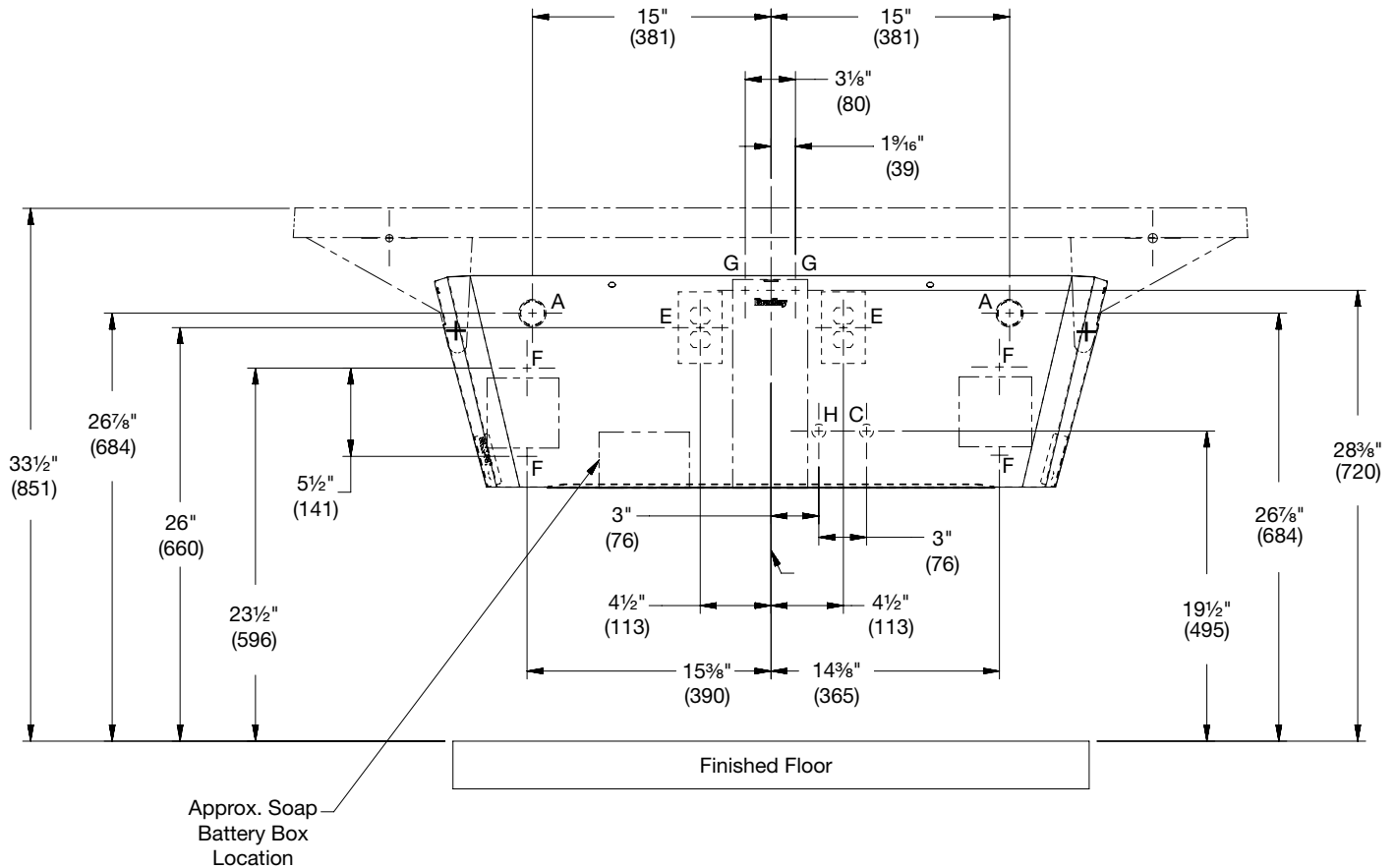
LVSD2 Verge® Wash Basin – LVS-Series

Plumbing and Electrical Rough-Ins for LVSD2 Wash Basin - Shared Soap

(mm)



Mounting for Standard ADA and TAS height shown.



CODE	DESCRIPTION	QTY.
A	1-1/2" NPT Drain, Stub-out 2" from wall, individual waste option	2
H,C	1/2" Nominal (5/8" O.D. Comp.) Hot/Cold supplies, Stub-out 2" from wall	1
E	110V GFI protected electrical outlet (AC faucet and soap only)	2
F	#10 Anchors for Faucet Control Box Installation	4
G	#10 Anchors for Soap Tank Installation	4