



A WATTS Brand

WB-TF

WashBar® Top Fill Multi-Feed Retrofit Kit

Key Features

- WB-TF pairs with WashBar all-in-one products to provide a top fill soap filling system
- Match fill port finish to existing WashBar finish
- Smart Sense System – elegant translucent ring integrated on the fill port gives a glowing indication of low battery, low soap, and overflow conditions
- Audible warning to stop filling before overflow occurs
- Utilizes universal bulk foam or liquid soap
- Complete with AC power

Specifications

The WashBar Top Fill Multi-Feed Retrofit Kit is designed for use with existing WashBar all-in-one products. Tank is compatible with bulk foam or liquid soap. Fill port hub shall feature chrome-plated brass construction with optional in-stock PVD finish to match existing WashBar finish.

Product Compliance

Complies with

- ADA
- ICC/ANSI 117.1
- TAS
- UL electrical components
- CE electrical components



Serves the American Disabilities Act and ICC/ANSI 117.1 guidelines, citations 306, 308, 309.4, 606.4, 606.5 when installed according to these requirements.

Consult local codes and standards.



Finishes



Click on any color swatch to view as a larger image.



Polished Chrome



Brushed Black Stainless*



Brushed Stainless*



Brushed Bronze*



Brushed Brass*



Brushed Nickel*

*PVD Finishes, see PVD Finishes section.

* PVD Finishes

Physical Vapor Deposition is an intricate, environmentally friendly finishing process that molecularly bonds the finish to the faucet, creating a very hard, durable surface that will not corrode, discolor, or tarnish.

Compatible Bradley Products

- [Verge Multi-Feed Soap System](#)
- [LVQD Series Lavs](#)
- [LD-5010 Lavs](#)
- [Undermount Lavs](#)



A WATTS Brand

WB-TF

WashBar® Top Fill Multi-Feed Retrofit Kit

Mounting

Verify all rough-in dimensions prior to installation. Mount dispenser in a 2-3/8" (60 mm) diameter hole in lavatory or countertop.



Refer to the specific lavatory model tech data and installation guide for proper rough-in locations. This includes drilling and mounting locations.

Shank will accommodate a maximum counter thickness of 1-1/2" (38 mm).

Indicator Lights

- Power ON (multi-feed): flashes green/red 3 times
- Low power indication: continuously flashing green light
- Low soap level: flashes red when soap level is below 25% capacity
- Overflow condition: steady red light with audible indication from buzzer lasts 2.5 seconds when fill level reaches 90% capacity

Vandal Resistance

- Durable PVD finish is scratch resistant
- Tamper resistant screw

Power Source

- Multi-Feed control box is powered directly from the WashBar master controller using the Top Fill Multi-Feed Power Harness

Soap Specifications

- Non-proprietary bulk soap (select foam or liquid)
- Liquid: viscosity range of 100-5,000 cPs
- Foam: all-purpose foam hand soaps and antibacterial foam soaps containing PCMX and/or Triclosan

Please visit <https://www.bradleycorp.com/maintenance/soap-dispensers> for soap recommendations.

Models (Must select one)

| Model | Description |
|---------|---|
| WB-TF-1 | WashBar Top Fill Multi-Feed Retrofit Kit - Single Station |
| WB-TF-2 | WashBar Top Fill Multi-Feed Retrofit Kit - Two Station |
| WB-TF-3 | WashBar Top Fill Multi-Feed Retrofit Kit - Three Station |
| WB-TF-4 | WashBar Top Fill Multi-Feed Retrofit Kit - Four Station |

Standard Selections (Must select one from each category)

Country of Installation

| | |
|----|-------------------------|
| C1 | United States or Canada |
|----|-------------------------|







Soap Type (select one)

| | |
|---|--|
| F | Foam Soap Dispenser - 1.3 gallon soap container 6-SOAP-MFT |
| L | Liquid Soap Dispenser - 1.3 gallon soap container 6-SOAP-MFT |

Power Supply (select one)

| | |
|----|---|
| AC | AC Power (Includes Top Fill Multi-Feed Power Harness) |
|----|---|

WashBar Finish Type (select one) ¹

| | |
|----|---|
| PC |  Polished Chrome |
| BB |  Brushed Black Stainless |
| BS |  Brushed Stainless |
| BZ |  Brushed Bronze |
| BR |  Brushed Brass |
| BN |  Brushed Nickel |

¹ Match top fill port finish to WashBar finish.

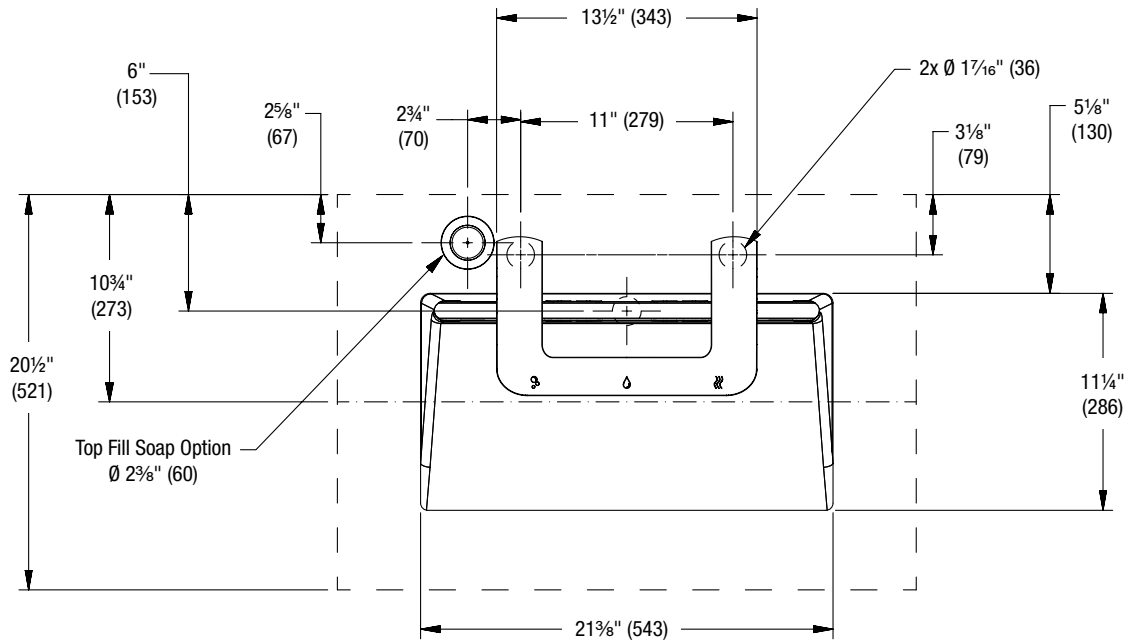


A WATTS Brand

WB-TF WashBar® Top Fill Multi-Feed Retrofit Kit

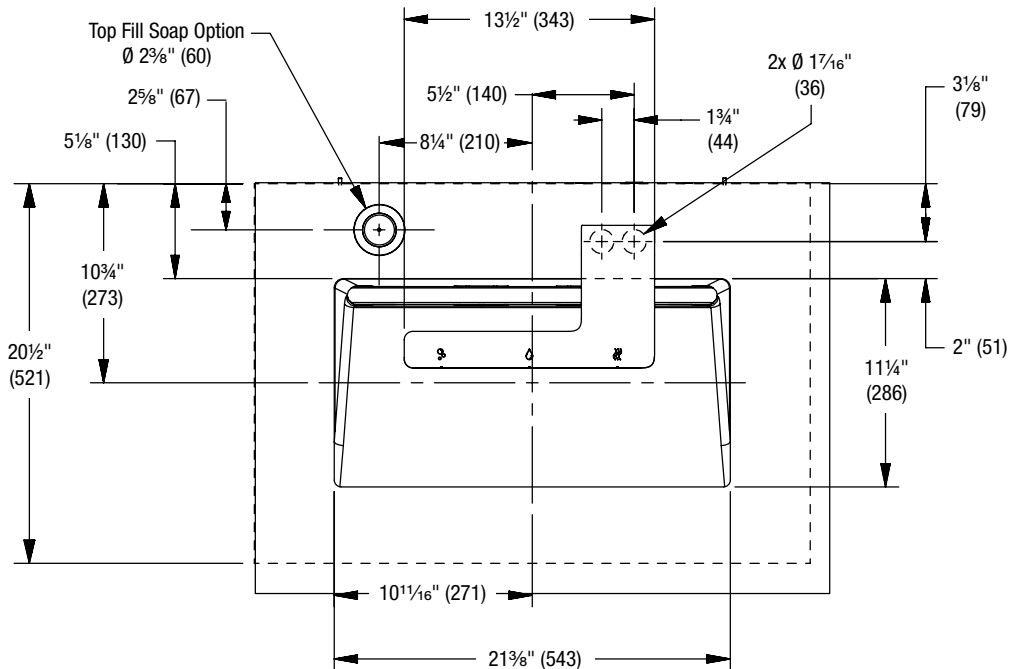
Top View for WB1 – Top Fill Soap

(mm)



Top View for WB2 – Top Fill Soap

(mm)



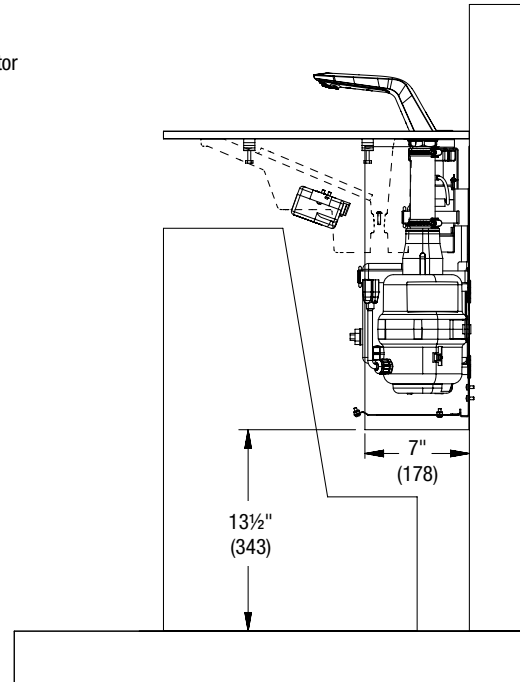
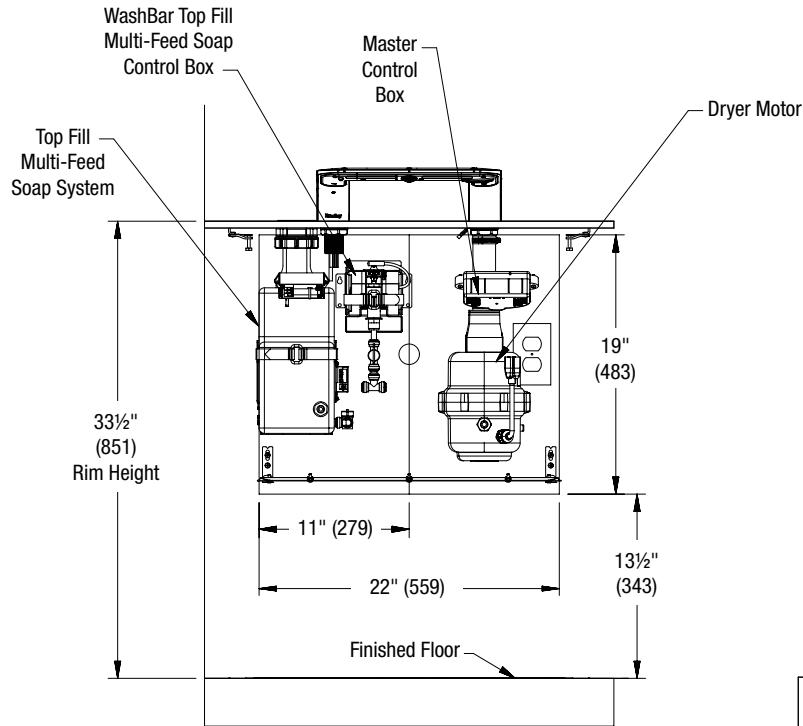


A WATTS Brand

WB-TF WashBar® Top Fill Multi-Feed Retrofit Kit

WashBar Top Fill Component Footprint

- ☒ Typical rough-in for single WB-TR1 or WB-ER1 bowl is shown.
Other multiple bowl rough-ins are similar.



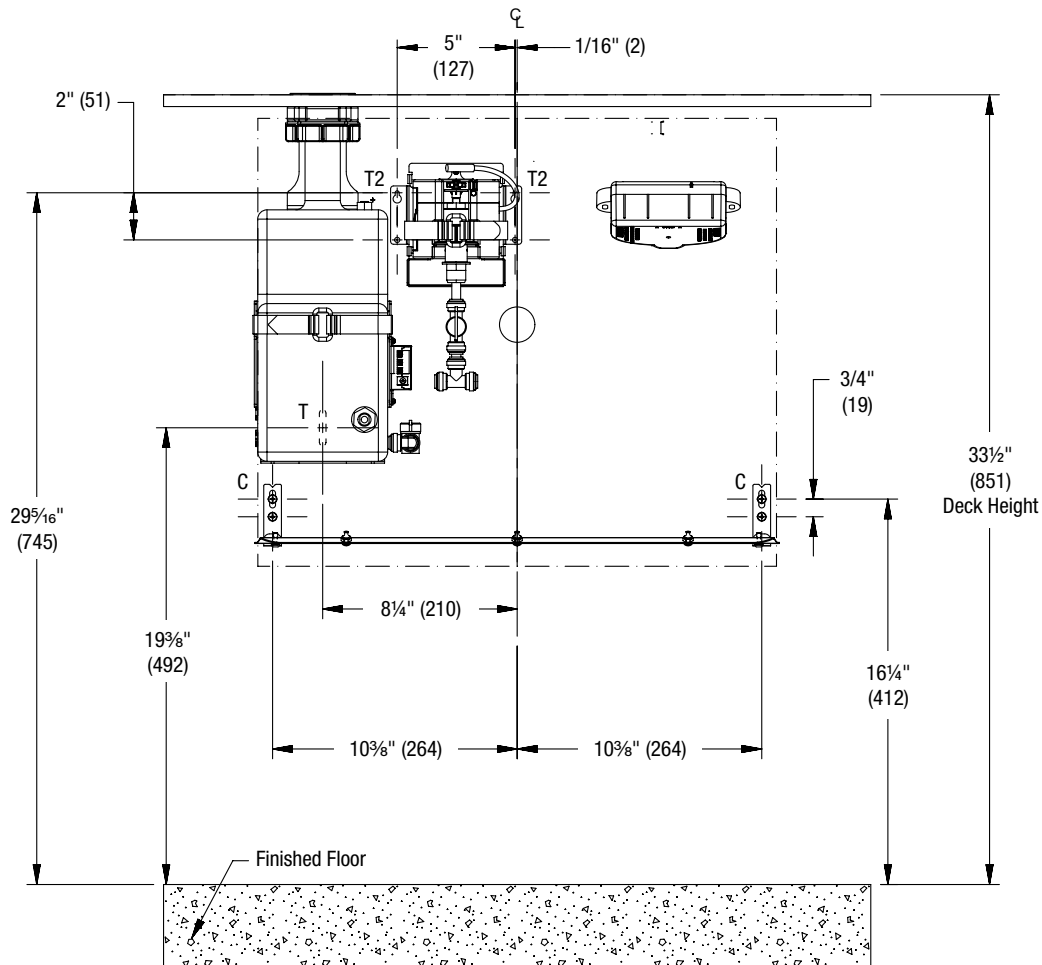


A WATTS Brand

WB-TF WashBar® Top Fill Multi-Feed Retrofit Kit

Structural Rough-Ins for WashBar Top Fill Retrofit Kit

☒ Typical rough-in for single WB-TR1 or WB-ER1 bowl is shown.
Other multiple bowl rough-ins are similar.



| CODE | DESCRIPTION | QTY. |
|------|--|------|
| C | Install wall anchor with a minimum pull-out force of 100 lb per local codes at locations shown | 4 |
| T2 | #10 Wall Anchors for Soap Control Box Bracket | 2 |
| T | #10 Wall Anchors for Soap Tank Bracket (100 lb pull out force) | 1 |

| RIM HEIGHT | VERTICAL HEIGHT ADJUSTMENTS | FIXTURE STYLE |
|------------|-----------------------------|-----------------------------|
| 34" | No Adjustment | Standard Height ADA and TAS |
| 31 | Subtract 3" | Juvenile ADA and TAS |
| 33 1/16" | Subtract 1 5/16" | OBC |
| 34 1/16" | Add 1/16" | BCBC and QBC |
| 33 7/8" | Subtract 1/8" | CSA |



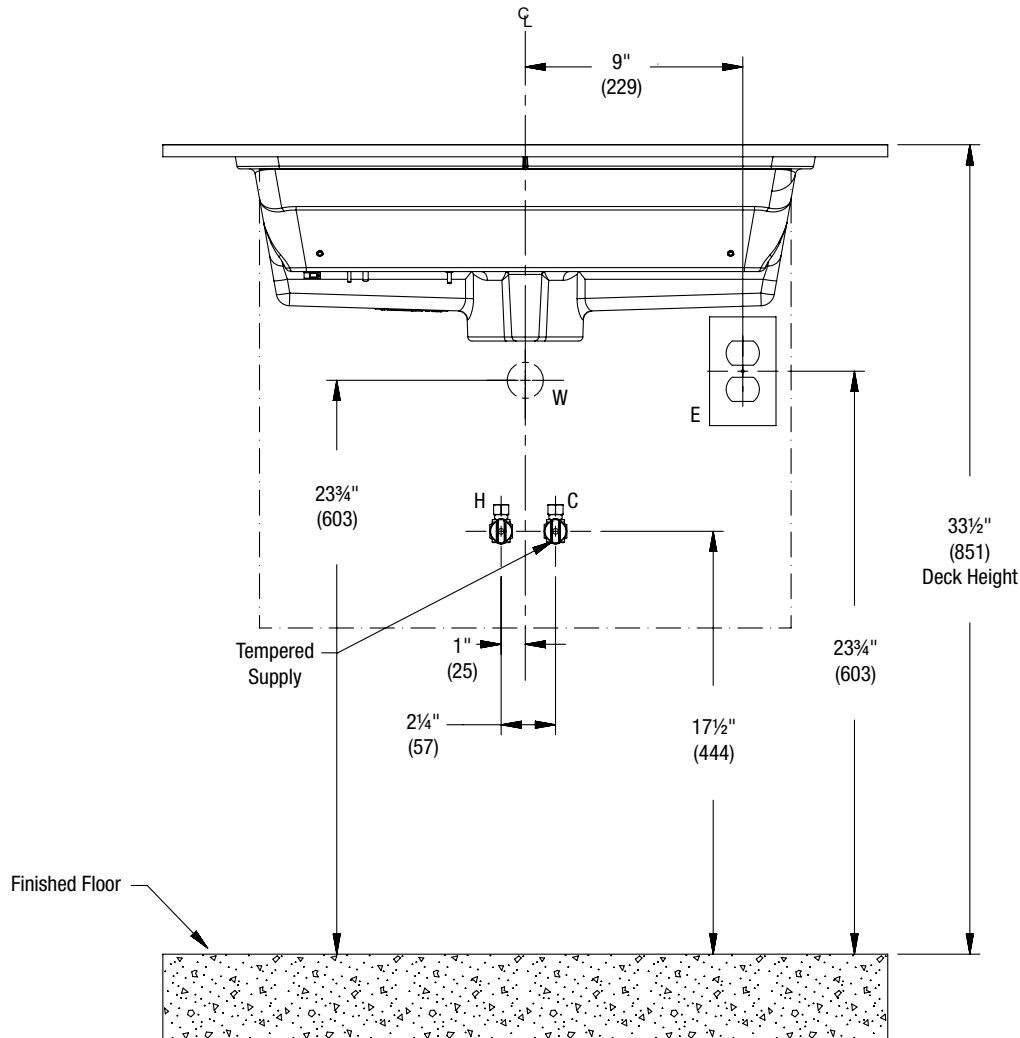
A WATTS Brand

WB-TF WashBar® Top Fill Multi-Feed Retrofit Kit

Plumbing and Electrical Rough-Ins for WashBar Top Fill Retrofit Kit

(mm)

- ✓ Mounting for Standard ADA and TAS height shown.
- ✓ Typical rough-in for single WB-ER1 undermount basin is shown.
Other multiple basin rough-ins are similar.



| CODE | DESCRIPTION | QTY. |
|------|---|------|
| W | 1-1/2" NPT Drain, Stub-out 2" from wall | 1 |
| H, C | 1/2" Nominal (5/8" O.D. Comp.) Hot/Cold supplies, Stub-out 2" from wall | 1 |
| E | A dedicated NEMA 5-15R Receptacle, 125V GFCI must be provided, which is properly grounded and no more than 4 ft from the installation of the dryer assembly.* | 1 |

*If no GFCI outlet is provided, contact a licensed electrician to ensure proper electrical connections in accordance with local building codes. Troubleshooting and internal maintenance must be performed by qualified service personnel.