

## VERTICAL CABLE MANAGEMENT CHANNEL

*The Vertical Cable Management Channel may be assembled to the side of one rack, or between two adjacent racks. When assembled between two racks the Vertical Cable Management Channel will result in a 24" wide rack spacing. A Vertical Cable Management Channel can be assembled to both the front and rear of the rack, or one Vertical Cable Management Channel can be used in combination with #4PRBAYKIT baying bracket kit which also provides a 24" rack spacing.*

### PART INVENTORY

#### 4PR45VM VERTICAL CABLE MANAGEMENT CHANNEL

- (1) Vertical Cable Management Channel
- (10) 5/16"-18 x 5/8" Hex Head Bolts
- (10) 5/16"-18 Hex Nuts

#### OPTIONAL EDGING KIT – 4PREDGKT

- (8) Edge Grommet - Long
- (8) Edge Grommet - Short

#### TOOL REQUIRED (not supplied)

- (1) 1/2" Wrench

#### VERTICAL CABLE MANAGEMENT CHANNEL ASSEMBLY

Assemble the Vertical Cable Management Channel to each rack corner post with (5) bolts and nuts.

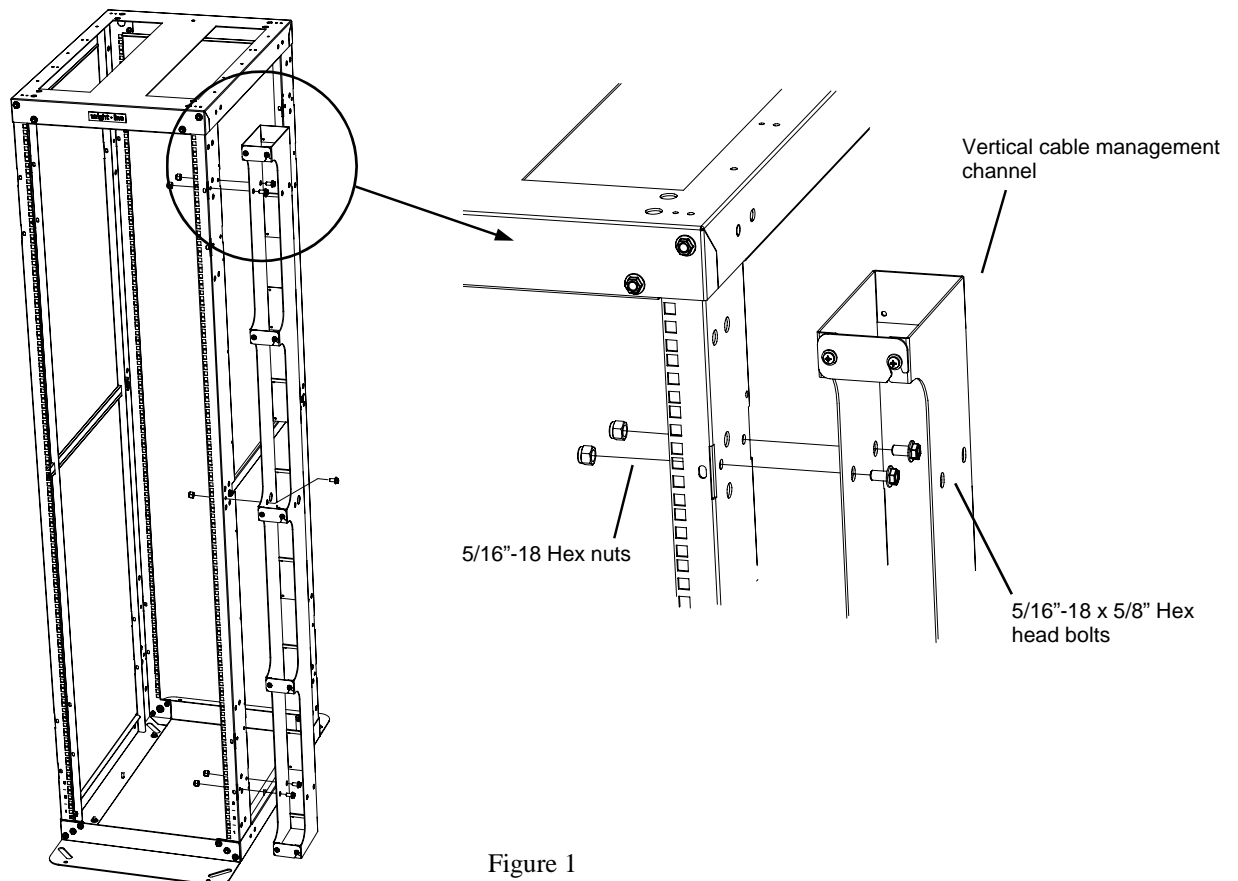


Figure 1

wright • line Vertical Cable  
technical environment solutions Management Channel

OPTIONAL EDGING KIT

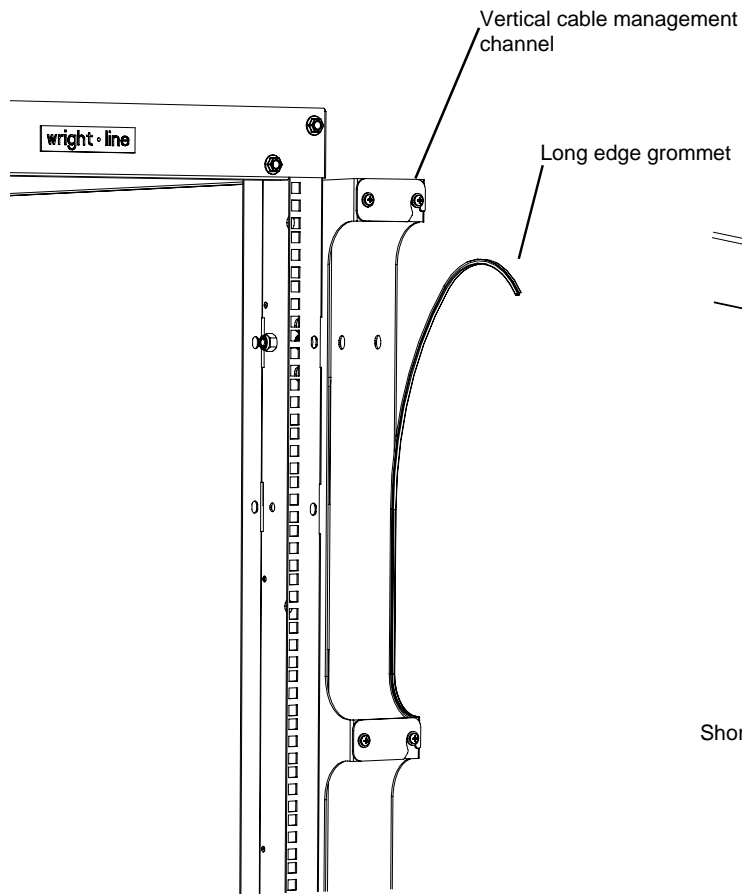


Figure 2

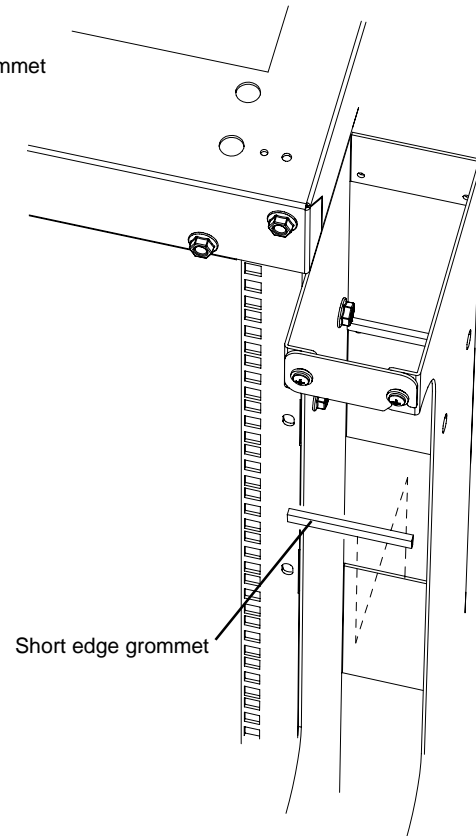


Figure 2