



A WATTS Brand

S19-2150 (EFX20)

Emergency Fixture Thermostatic Mixing Valve

- Exceeds ANSI Z358.1
- ASSE 1071 Certified
- Reliable Liquid-Filled Thermostat with 10-Year Warranty
- Integral Strainer Checkstops on Inlets
- Adjustable Set Point within Temperature Range
- Accurate Temperature Control to within $\pm 3^{\circ}$ F
- Built-in Cold Water Bypass, Assuring Cold Flow
- Positive Shutoff of Hot Supply When Cold Supply is Lost
- Easy Installation and Serviceability
- Dirt and Lime Resistant
- Dial Thermometer
- Factory Assembled and Tested
- Universal Mounting Capability
- Cabinet Features:
 - 18 Gauge Body & Door
 - Left-Hand Hinge
 - Cylinder Lock
 - Inlet/Outlet Knock-Out Holes for Mounting Flexibility
 - Stainless Steel or Baked White Enamel Finishes
 - Surface-Mounted or Recessed Style

Valve Specifications

Maximum Operating Pressure
125 PSI (860 kPa)

Maximum Inlet Temperature
180° F (82° C)

Recommended Inlet Temperature
120° F (49° C) – 140° F (60° C)

Temperature Range
Std. 65° F (18° C) to 90° F (32° C) **Set Point** 85° F (29° C)

Flow Capacities – GPM

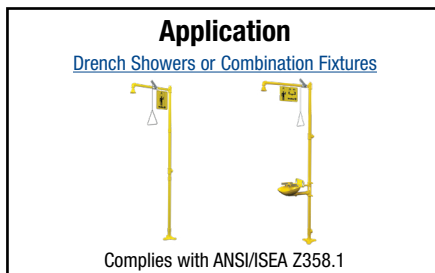
| Model | Min. Flow | Pressure Drop – PSI | | | | | | |
|----------|-----------|---------------------|------|------|------|------|------|------|
| | | 5 | 10 | 15 | 20 | 30 | 45 | 60 |
| S19-2150 | 3.0 | 6.8 | 15.2 | 20.1 | 23.8 | 30.3 | 36.8 | 42.5 |

Minimum cold water bypass at 30 PSID: 16.9 GPM

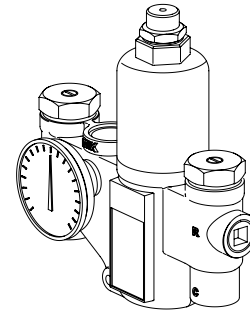
Flow Capacities – L/Min

| Model | Min. Flow | Pressure Drop – Bar | | | | | | |
|----------|-----------|---------------------|------|------|------|-------|-------|-------|
| | | .5 | 1.0 | 1.5 | 2.0 | 2.5 | 3.0 | 4.0 |
| S19-2150 | 11.4 | 25.7 | 57.5 | 76.1 | 90.1 | 114.7 | 139.3 | 160.9 |

Minimum cold water bypass at 2.1 Bar: 64.0 L/Min



Engineer's Approval _____



Valve Model

| Model | Description |
|----------|---|
| S19-2150 | Emergency Fixture Thermostatic Mixing Valve |

Configurable Valve Model (select one)

| Model | Description |
|-----------|---|
| EFX20 | EFX20 Thermostatic Mixing Valve with Options |
| CAB-EFX20 | EFX20 Thermostatic Mixing Valve Cabinet Only |

Optional Valve Selections

| Finish | |
|----------------|--|
| R | Rough Brass (standard) |
| C | Chrome Plated |
| Bracket | |
| B | Wall Mounting Bracket |
| O | None |
| Piped Assembly | |
| P | Piped Assembly with Inlet and Outlet Shutoff |
| N | Piped Assembly only |
| O | None |

Optional Cabinet Selections

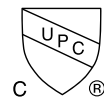
| Cabinets (includes bracket) | |
|-----------------------------|-------------------------------|
| SS* | Surface Mount Stainless Steel |
| RS* | Recessed Stainless Steel |
| SE* | Surface Mount White Enamel |
| RE* | Recessed White Enamel |
| O* | None |
| Window | |
| W | Plexi-Glass Window in Door |
| O | None |

*Requires piped assembly

Product Compliance

Listed by IAPMO R&T to

- ASSE 1071
- Uniform Plumbing Code (UPC)
- National Plumbing Code of Canada
- International Plumbing Code (IPC)



Listed by ASSE International to

- ASSE 1071



This plumbing fixture is not intended to dispense water for human consumption through drinking or for preparation of food or beverages.

© 2024 Bradley

P.O. Box 309, Menomonee Falls, WI 53052-0309
800 BRADLEY (800 272 3539) +1 262 251 6000
bradleycorp.com

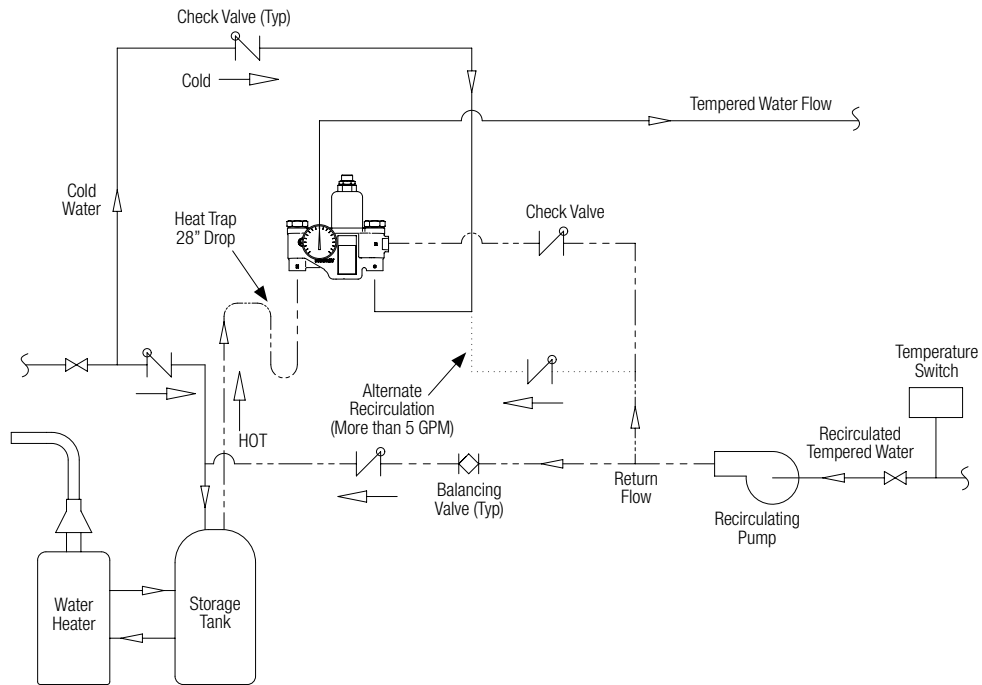


A WATTS Brand

S19-2150 (EFX20) Emergency Fixture Thermostatic Mixing Valve

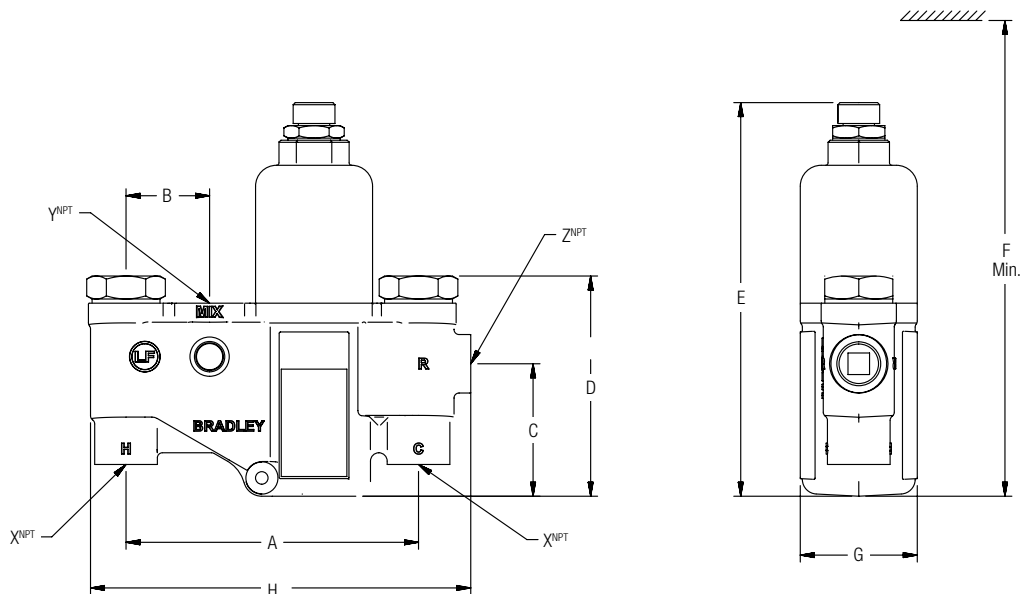
Recirculation Diagram

(mm)



Dimensions

| Model | A | B | C | D | E | F | G | H | X ^{NPT} | Y ^{NPT} | Z ^{NPT} |
|----------|----------|---------|-------------|--------------|--------------|-----------|-------------|---------------|------------------|------------------|------------------|
| S19-2150 | 7" (178) | 2" (51) | 3-1/8" (79) | 5-1/4" (133) | 9-5/8" (244) | 14" (356) | 2-3/4" (70) | 9-3/16" (230) | 3/4" | 1" | 3/4" |





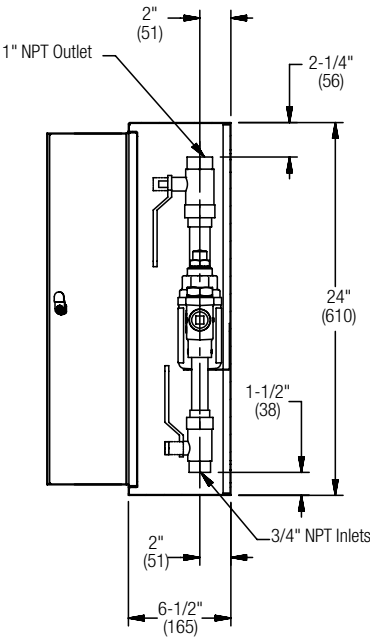
A WATTS Brand

S19-2150 (EFX20) Emergency Fixture Thermostatic Mixing Valve

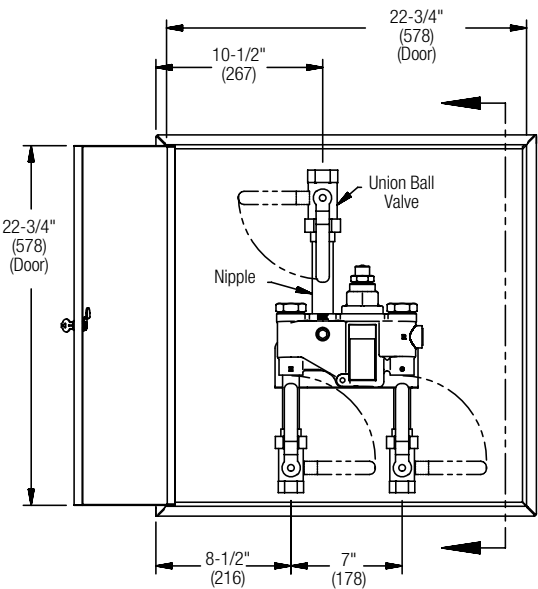
Dimensions — Surface-Mounted Cabinet

(mm)

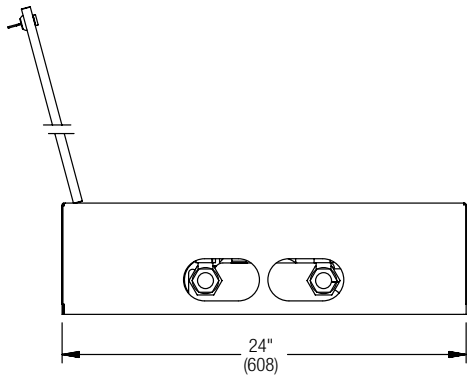
Side
View



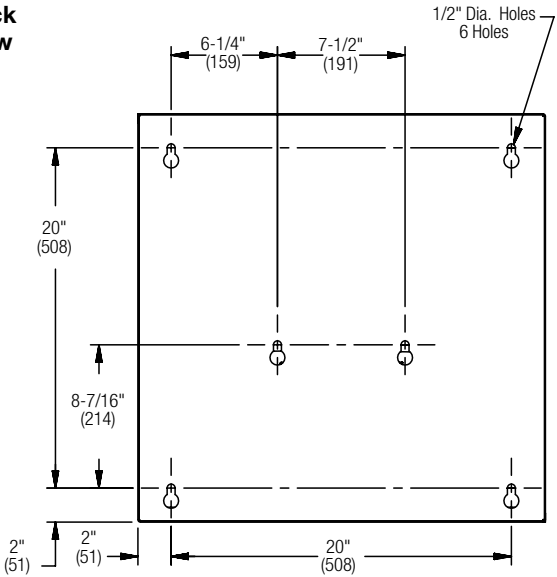
Front
View



Bottom
View



Back
View





(mm)

Dimensions – Recessed Cabinet

[illegible]