



A WATTS Brand

HN250 Surface-Mounted ADA Compliant Wall Shower

- Ideal for ADA Shower Rooms
- Flexible Supply Hoses Make Rough-In Easier
- Completely Preassembled, Surface-Mounted Wall Unit

Specifications

Shower Configuration

Available in a right or left-handed configuration depending on location of valve, as determined by application or ADA requirements.

Construction

Materials

All exposed materials, except for phenolic seat, are type 304 stainless steel or polished chrome-plated brass. Shower panel is 16 gauge and grab bar is 18 gauge. Valve bodies are brass casting. Supply hoses are 24" flexible stainless steel.

ADA Compliant

When installed properly in a 3' x 3' stall (provided by others), the HN250 provides a shower stall designed to comply with all known ADA guidelines on reaches, clearances, and operation. Controls are mounted 48" above the floor to accommodate all users. Partition/stall provided by others.



Check local applicable codes for dimensional compliance.

Standard Equipment

Shower Panel

Constructed of 16 gauge stainless steel.

Valve Type as Selected

For more information on each valve type, please enter the model number in the search box at www.bradleycorp.com.

Showerhead

Standard fixed direction adjustable sprayhead (S15).

Diverter Valve

Lever handle operation for easy transfer of water flow between fixed and hand-held shower spray.

Hand Shower

Consisting of hand shower with on-off control, a 60" stainless steel flexible hose and post style mounting bracket to hold to shower panel. Elevated in-line backflow preventer with quick-disconnect for flexible hose.

Supply Inlets

Supply inlets are 24" flexible, stainless steel hoses with 1/2" NPT connections.

Flow Control

A 1.5 GPM (5.7 LPM) flow control is standard. Actual flow may vary, but will not exceed 2.0 GPM (7.6 LPM) max.



Optional Selections

L-Shaped Grab Bar

Grab bar fabricated of 18 gauge 1-1/2" O.D. stainless steel tubing with a 1-1/2" safety statute clearance. Flanges are 11 gauge. Load capacity in excess of 300 lbs.

ADA Compliant Seat

Reversible phenolic shower seat. Load capacity of 250 lbs. See technical data document Bradley_ShowerSeat_9569 for additional information.

Shower Curtain

60" x 72" vinyl shower curtain with heavy-duty curtain rod and hooks.



A WATTS Brand

HN250

Surface-Mounted ADA Compliant Wall Shower

Model	Description
HN250	Surface-Mounted ADA-Compliant Wall Shower

Standard Selections (Must select one from each category)	
Showerhead Height (select one)	
6'-0"	Standard Height
5'-6"	Juvenile Height

Valve Type (select one)	
EF	Equa-Flo Pressure-Balancing Valve
HD	Equa-Flo HD Pressure-Balancing Valve
TMV	Thermostatic Mixing Valve
SVL	Single Compression Valve with Lever Handle
AST	Air Pushbutton
TTPA	TouchTime Pushbutton*
TTPB	TouchTime Piezo Switch*

Showerhead Type (S15 option is the default if no showerhead option selected)	
S15	Standard Showerhead (Flow Rate = 1.5 GPM/5.7 LPM)
SX15	Severe Service Showerhead (Flow Rate = 1.5 GPM/5.7 LPM)
S20	Standard Showerhead (Flow Rate = 2.0 GPM/7.6 LPM)
SX20	Severe Service Showerhead (Flow Rate = 2.0 GPM/7.6 LPM)
SF	Deluxe Showerhead w/ Ball Joint (Flow Rate = 1.5 GPM/5.7 LPM)
ES	Economy Soft Flow with Ball Joint (Flow Rate = 2.0 GPM/7.6 LPM)
J	Multi-Jet Showerhead w/ Ball Joint (Flow Rate = 1.5 GPM/5.7 LPM)
LX	Luxury Showerhead w/ Ball Joint (Flow Rate = 1.5 GPM/5.7 LPM)
B	Axis Showerhead w/ Ball Joint (Flow Rate = 1.5 GPM/5.7 LPM)

Second Showerhead Type (select one)	
HS	Hand shower w/ 60" Flexible Hose, Wall Hook, Vacuum Breaker and Quick Disconnect ‡
S15	Standard Showerhead w/ Ball Joint (Flow Rate = 1.5 GPM)
SX15	Severe Service Showerhead (Flow Rate = 1.5 GPM/5.7 LPM)
S20	Standard Showerhead w/ Ball Joint (Flow Rate = 2.0 GPM/7.6 LPM)
SX20	Severe Service Showerhead (Flow Rate = 2.0 GPM/7.6 LPM)
ES	Economy Soft Flow Showerhead w/ Ball Joint (Flow Rate = 2.0 GPM/7.6 LPM)
J	Multi-Jet Showerhead w/ Ball Joint (Flow Rate = 1.5 GPM/5.7 LPM)
LX	Luxury Showerhead w/ Ball Joint (Flow Rate = 1.5 GPM/5.7 LPM)
B	Axis Showerhead w/ Ball Joint (Flow Rate = 1.5 GPM/5.7 LPM)

Valve Location (select one)	
VL	Valve Left
VR	Valve Right

Optional Selections	
Volume Control Type† (select one)	
AKV	Allen Key Volume Control
LHV	Lever Handle Volume Control
NONE	No Volume Control

Ball Joint Type† (select one)	
LBJ	Lockable Ball Joint
NONE	No Lockable Ball Joint

Supply Stop Type** (select one)	
ST	Stops in each Supply
NONE	No Supply Stops

Slide Bar Type§ (select one)	
SB	24" Slide Bar
NONE	No Slide Bar

Shroud Type	
SHV	Vertical Shrouds (floor to ceiling height _____ ft. _____ in.)
SHH	Horizontal Shroud (per 3' section)
NONE	No Shroud

Shower Seat Type (select one)	
RSS	Reversible Phenolic Shower Seat (Not a Transfer Seat)
NS	No Seat

Curtain Type (select one)	
CRH	Shower Curtain, Rod and Hooks
NONE	No Shower Curtain, Rod or Hooks

Grab Bar Type (select one)	
GB	L-Shaped 2-Wall Grab Bar
NONE	No Grab Bar

Hardware Type	
SC	Standard Screws
VS	Vandal Resistant Screws

*TTPA and TTPB valves require a low-voltage UL/CSA listed 120VAC/12VDC plug-in adapter.

**Included with EF, HD and TMV Valves.

‡ Hand Shower is 1.5 GPM (5.7 LPM)

† Only available on S15 and S20 showerheads.

§ Only available with HS selection.

Verify all rough-in dimensions prior to installation.

Consult local and national codes: conformity and compliance to local and national codes is the responsibility of the installer.

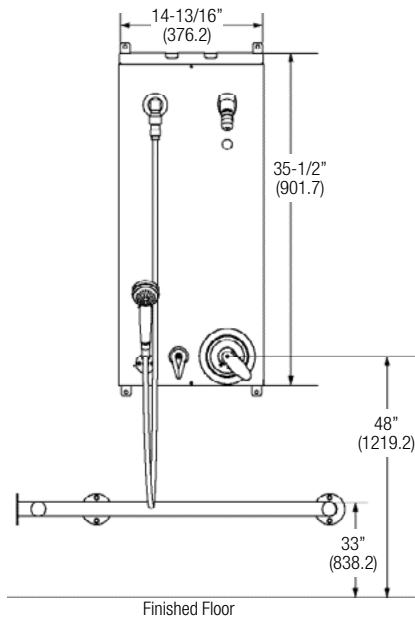
2.5 GPM showerhead flow rate does not meet California Energy Commission 20 CCR T.20, Div. 2, 1601-1609.



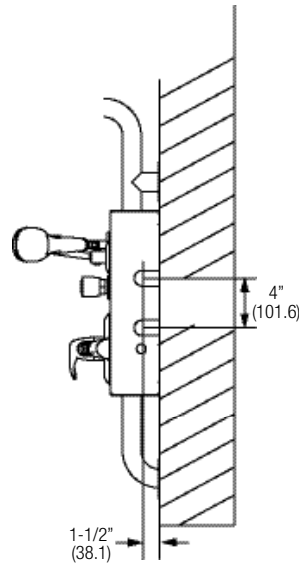
A WATTS Brand

HN250 Surface-Mounted ADA Compliant Wall Shower

Shower Panel/Grab Bar Rough-In

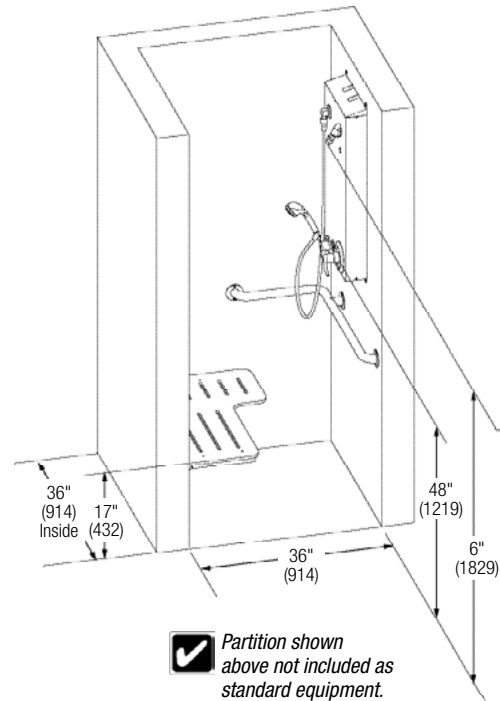


Supplies Rough-In

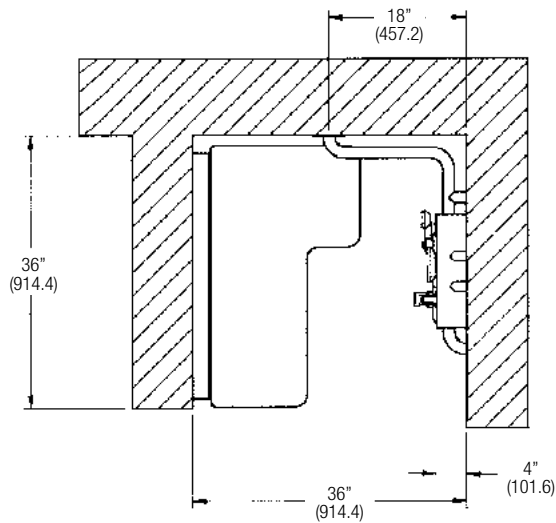


Dimensions for ADA Compliance

(mm)



Valve Right/Seat Left Configuration



✓ For Valve Left/Seat Right configuration, mirror dimensions for Valve Right/Seat Left.