

HN300 Valve Left/Seat Right Shown

# Installation

## HN300 ADA Compliant In-Wall Shower



### Table of Contents

Pre-Installation Information . . . . .	2
Components and Shower Stall Dimensions . . . . .	2
Installation Instructions . . . . .	3-5
Cleaning Instructions . . . . .	5
Repair Parts . . . . .	6

## IMPORTANT

**Read the entire installation manual to ensure proper installation of your HN300 shower. When finished with the installation, file this manual with the owner maintenance department. Compliance and conformity to local codes and ordinances is the responsibility of the installer.**

**Consult local building and plumbing codes prior to installation. Should these codes differ from the information in the Manual, follow the local codes. Inquire with governing authorities for additional local requirements.**

**Separate parts from packaging and make sure all parts are accounted for before discarding packaging material. If any parts are missing, do not begin installation until you obtain the missing parts.**

**Product warranties may be found under "Products" on our website at [bradleycorp.com](http://bradleycorp.com)**



## Pre-Installation Information

### Overview

The Bradley ADA compliant HN300 shower is an ideal solution to barrier-free or ADA compliant shower room design. The HN300 blends in well with other wet tile shower fixtures - avoiding any connotation of a "special" handicapped unit. HN300 components are furnished unassembled for job site installation. Particular care must be taken by the contractor for proper placement of the shower components. When installed properly in a 36" x 36" shower stall, the HN300 provides a shower stall which meets ADA compliant accessibility codes (always check local codes for compliance).


### Components

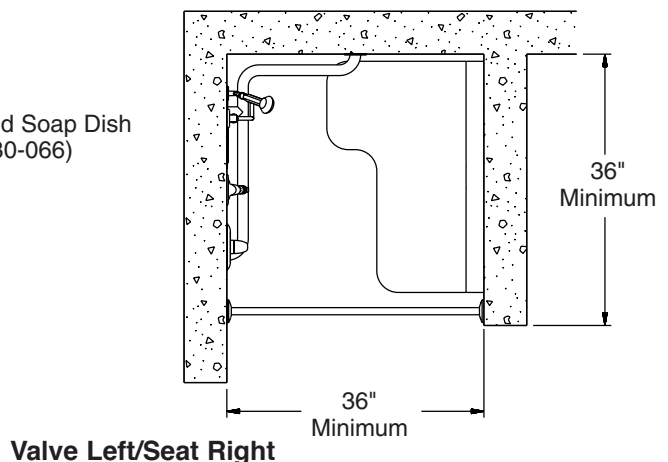
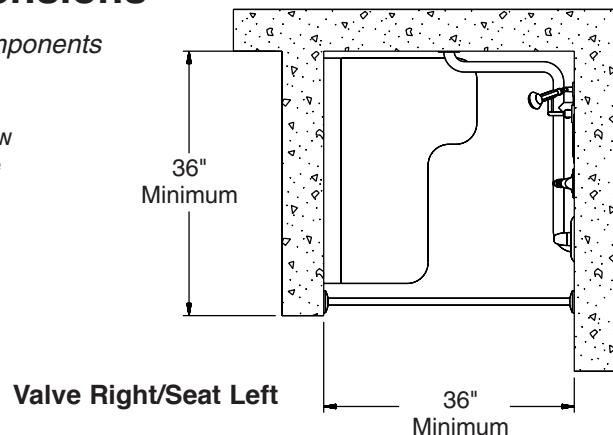
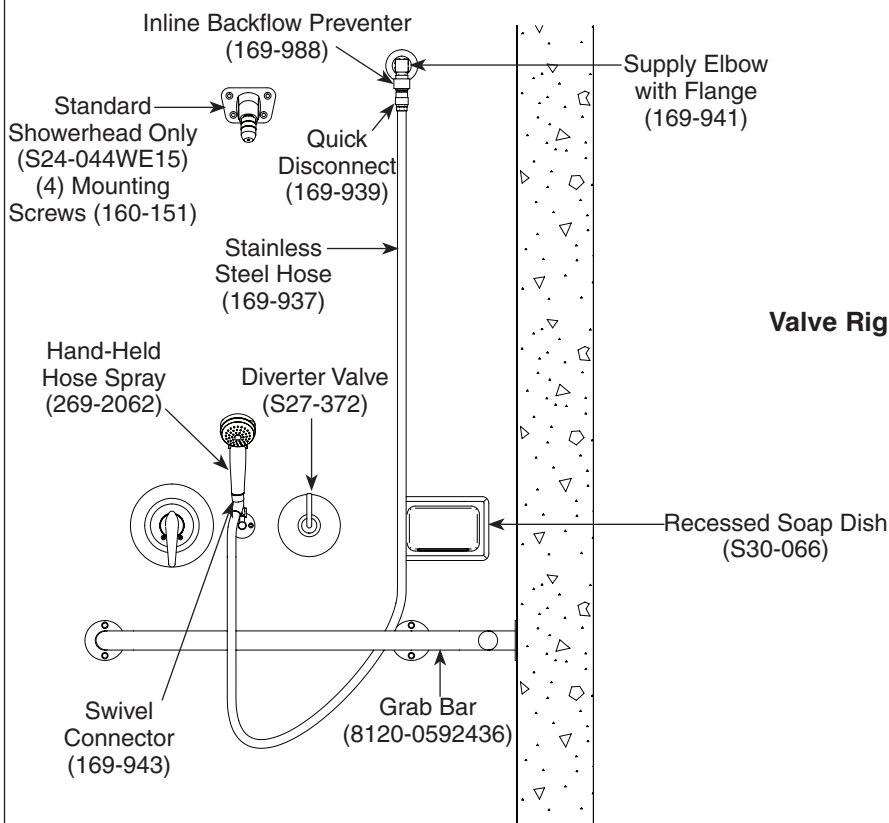
**Material:** All exposed parts (except seat cover) are stainless steel or polished chrome-plated brass. Valve bodies are brass.

### Supplies required for installation

- 1/2" NPT hot and cold water supplies
- 1/2" NPT brass pipe plug for Equa-Flo and thermostatic mixing valves ONLY
- Piping to shower components (supplied by installer)
- Materials to finish wall
- (2) wall anchors for #10-24 screws for wall bracket
- (4) wall anchors for 1/4"-20 x 1-1/4" flat socket head machine screws
- (6) 1/4"-20 x 1-1/4" machine anchors and screws to mount grab bar

## Components and Shower Stall Dimensions

 Always check local codes for correct placement of components



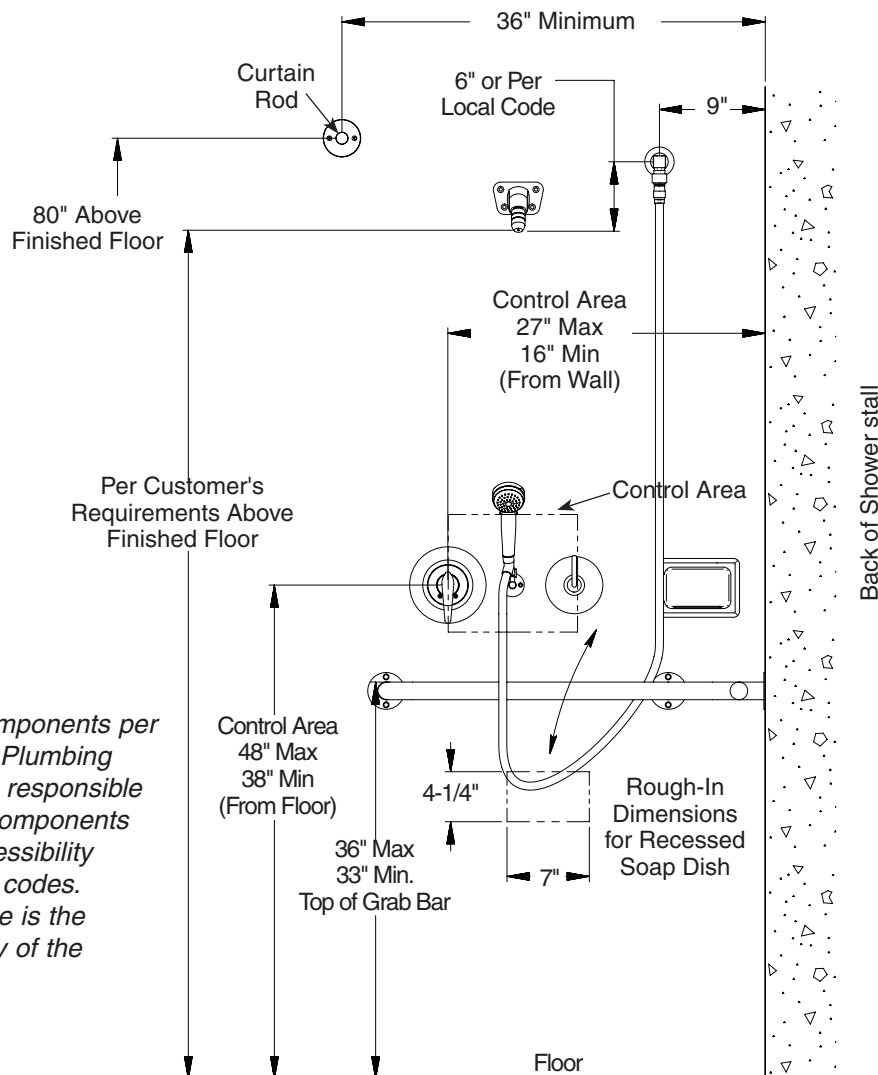
## Installation

- ✓ Flush the supply lines before making connections.
- ✓ Always check local codes for correct placement of components. California residents refer to Title 24.

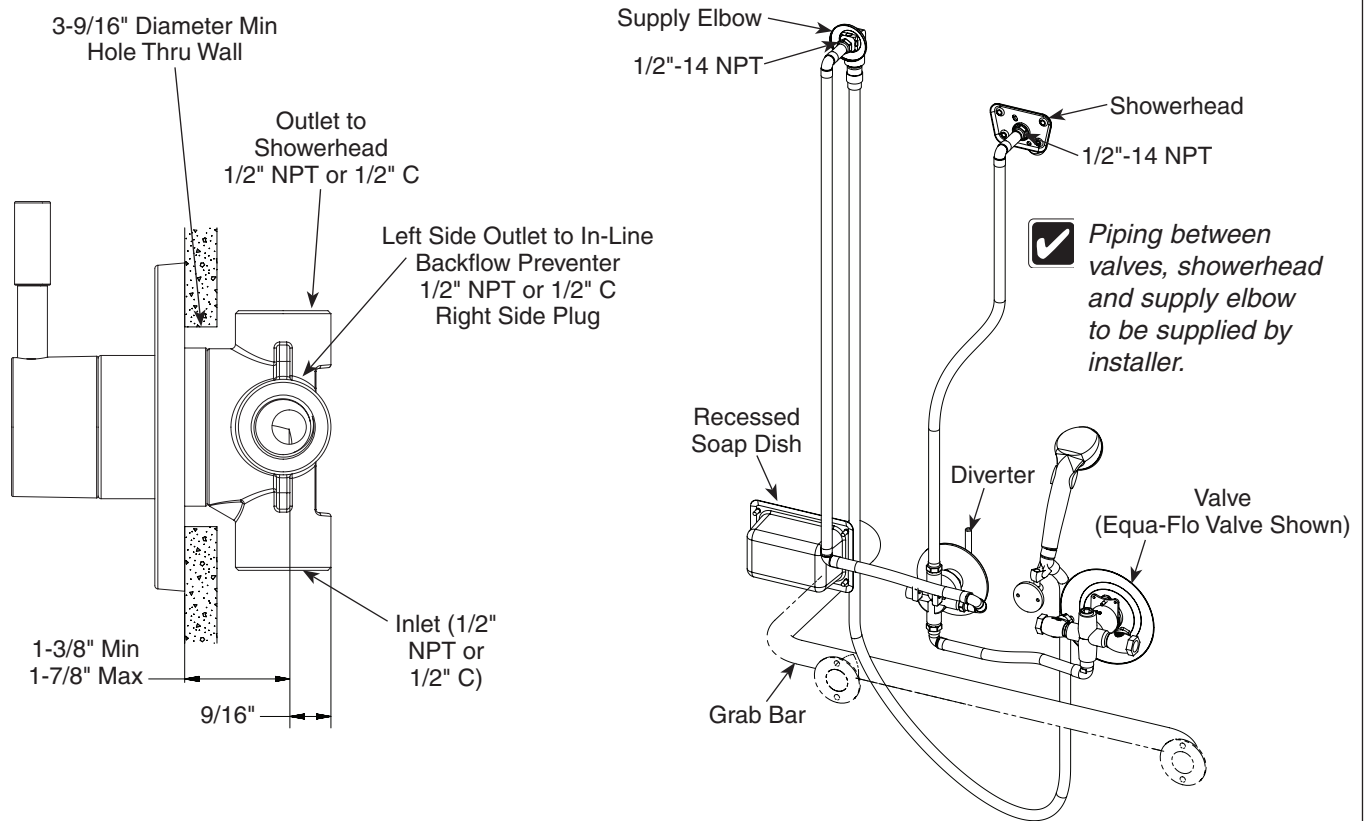
**WARNING!** This shower system may not protect the user from scalding when there is a failure of other temperature controlling devices elsewhere in the plumbing system.

### Step 1: Rough in piping for shower

1. Rough-in valve in location. Refer to the instruction sheet supplied with the valve for particular installation information.
2. Install the diverter using the installation sheet provided with the diverter valve.
3. Rough-in piping from valve to diverter valve, showerhead and supply elbow (piping supplied by installer).
4. If recessed soap dish is provided, rough-in a 7" x 4-1/4" rectangle in the wall.
5. Finish wall as required and assemble escutcheon and handle on valve using appropriate hardware.
6. Replace handle and escutcheon on diverter valve and secure with screw provided.



- ✓ Install all components per local codes. Plumbing contractor is responsible for placing components to meet accessibility requirement codes. Conformance is the responsibility of the installer.

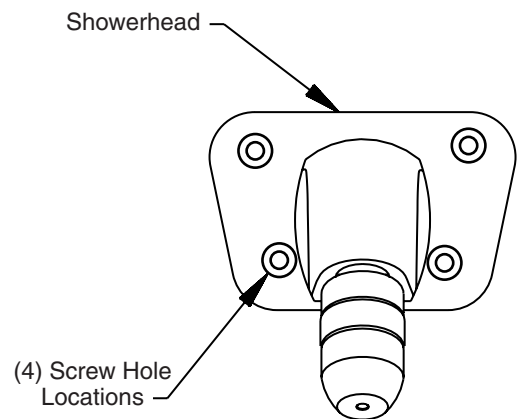


## Step 2: Install Showerhead

1. Thread showerhead onto supply piping.
2. Using showerhead as a template, mark four screw hole locations on wall.
3. Remove showerhead from piping.
4. Install wall anchors (supplied by installer) for 1/4"-20 x 1-1/4" flat socket head machine screws at four marked screw hole locations.



*It is the installer's responsibility to use the correct anchors for the given wall construction.*



## Step 3: Install In-Line Backflow Preventer and Hose Spray

1. Thread elbow with flange to supply piping.
2. Connect in-line backflow preventer, quick disconnect and hand-held hose spray to elbow.

## Step 4: Install Hand-Held Hose Bracket

1. Position bracket as shown.
2. Using bracket as template, mark two screw hole locations on wall.
3. Install two wall anchors (supplied by installer) for #10-24 screws at two screw hold locations.



*It is the installer's responsibility to use the correct anchors for the given wall construction.*

4. Secure hose bracket to wall anchors using two #10-24 screws supplied.

## Step 5: Install Recessed Soap Dish

1. Place recessed soap dish into 7" x 4-1/4" rectangular hole in wall.
2. Secure recessed soap dish to wall with four 1/4"-20 x 3/4" button head socket cap screws provided.

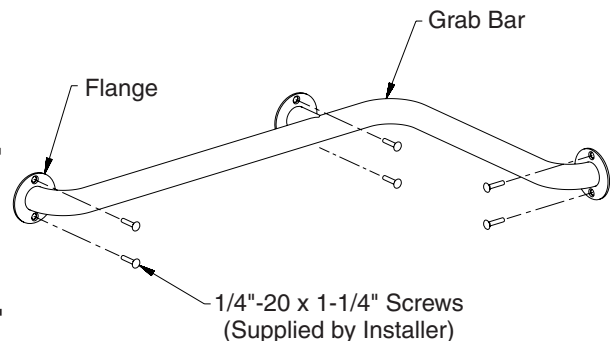
## Step 6: Install Grab Bar

1. Position grab bar as shown.
2. Using grab bar flanges as a template, mark screw hole locations.
3. Install wall anchors (supplied by installer) for 1/4"-20 x 1-1/4" machine screws at six marked screw hole locations.



*It is the installer's responsibility to use the correct anchors for the given wall construction.*

4. Mount grab bar to the six wall anchors using 1/4"-20 x 1-1/4" screws (supplied by installer).



## Step 7: Mount Shower Seat

1. Follow Shower Seat Installation that is shipped with seat.

## Step 8: Install Curtain Rod

1. Measure and cut stainless steel curtain rod to fit shower stall opening.
2. Mount one shower rod flange 80" from floor as close to opening of shower stall as possible with two #10-13 x 2" Phillips oval screws provided.
  - Insert one end of shower rod into flange.
  - Slide other shower rod flange onto shower rod.
3. Position shower rod and flange at same dimensions as first flange but on opposite side of shower stall opening.
4. Secure flange to wall with two #10-13 x 2" Phillips head screws provided.
5. Install ten hooks onto curtain rod and hang curtain on rod.

## Cleaning Instructions

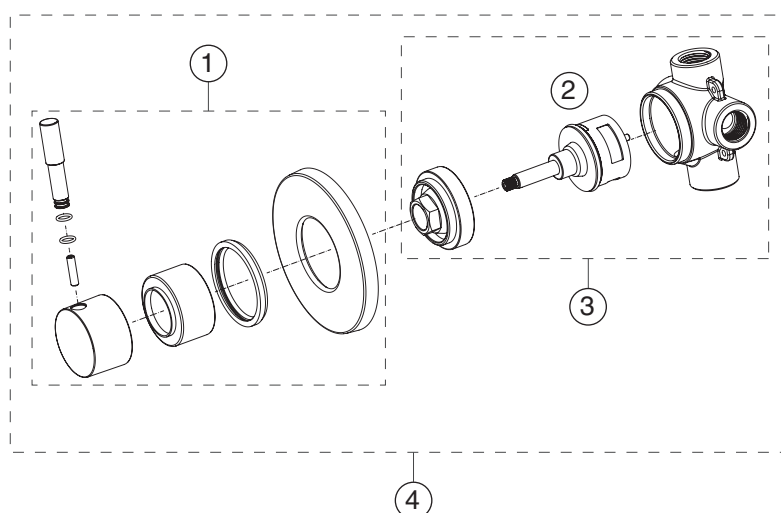


*Cleanliness is of utmost importance. Do not permit salty solutions to evaporate and dry on stainless steel. Never use ordinary steel wool or steel brushes on stainless steel. Always use stainless steel wool or stainless steel brushes.*

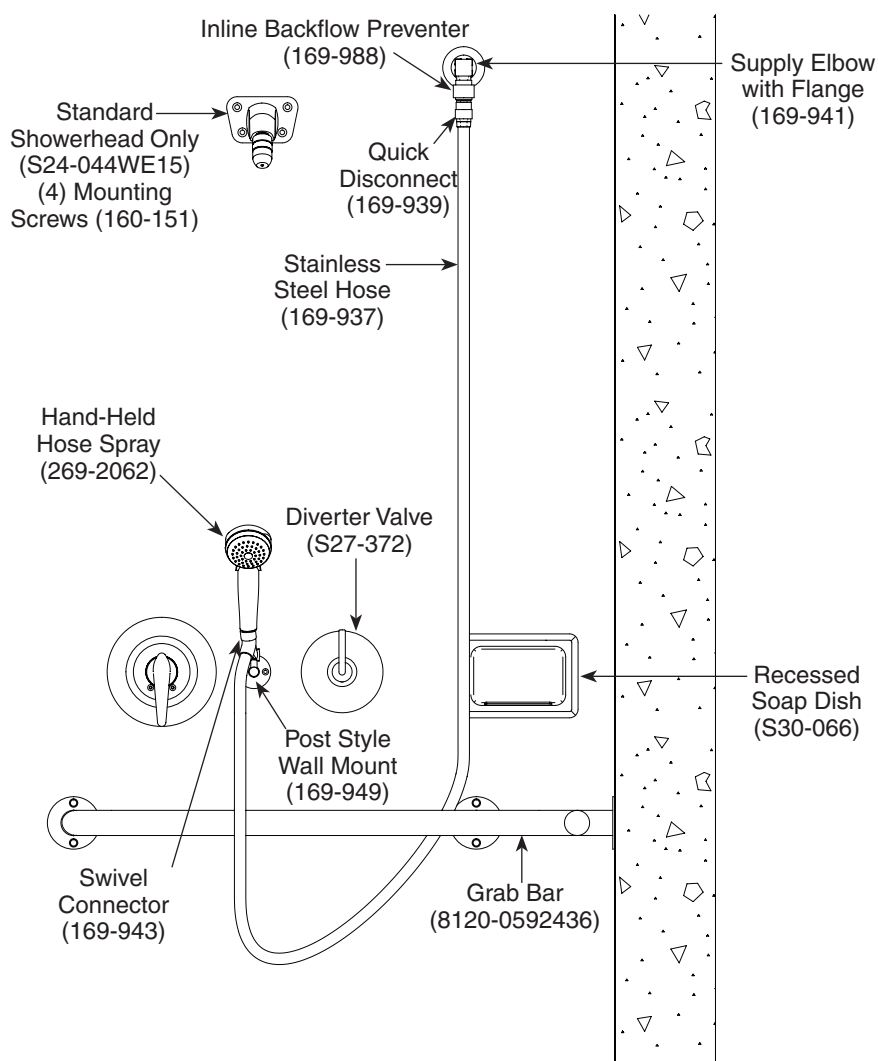
1. Remove ordinary deposits of dirt and grease with soap and water. Whenever possible, the metal should be thoroughly rinsed and dried after washing.
2. Use stainless steel polishing powder to get rid of tightly adhering deposits.
3. Look for the source of the rust in some iron or steel not actually a part of the stainless steel structure. Sometimes the appearance of rust streaks on stainless steel leads to the belief that the stainless steel is rusting. A steel nail or screw may be the cause of the trouble.
4. If the showerhead delivers an uneven spray, remove the showerhead from the unit, disassemble and remove foreign matter.
5. Reassemble showerhead and reinstall into unit.

## Diverter Valve Repair Parts - S27-372

Item	Part No.	Description
1	269-2775	Trim Package
2	269-2778	Cartridge
3	269-2774	Diverter Body (includes cartridge)
4	S27-372	Complete Diverter Valve Assembly



## HN300 Shower Components Repair Parts



## Shower Curtain Repair Parts

Part No.	Description
151-001*	Curtain Hooks (10)
113-313A*	Curtain Rod
150-157*	Shower Rod Flange (2)
P10-412*	#10-13 x 2" Phillips Head Screw (4)
170-006*	Vinyl Shower Curtain
170-006E	Herculite Shower Curtain

\*Also available in Curtain Prepack S30-068.