



A WATTS Brand

Floor-Braced Restroom Partitions

Phenolic Privacy Partitions — Series 500

This style is mounted to the floor with floor bolts and is recommended for areas where there are unusually high ceilings or conditions where aesthetically this style is desired. It requires a minimum 3" concrete floor for anchoring.

Phenolic Privacy Partition Series Features

- Includes No-Site™ design as standard eliminating gaps between doors and pilasters
- Preinstalled threaded inserts on doors and pilasters reducing installation time
- Rabbeted edge on hinge and latch side providing flush finish and full privacy
- Indicator latches are standard
- Available in 9 new colors

Construction

Solid phenolic black core is composed of compressed cellulose fibers impregnated with resins. The surface laminate is fused to the resin-impregnated core. All edges are black, machined and finished smooth with a 45-degree chamfered edge. Doors and pilasters include a built-in, No-Site feature that eliminates sight lines into the stall. Materials will not delaminate even under extreme conditions. Materials are non-absorbent, impact and graffiti resistant. Materials are impervious to steam, soaps, and detergents and will not mildew.

Panels

Panels are 1/2" thick, constructed from solid phenolic core.

Doors

Doors are 3/4" thick, constructed from solid phenolic core with factory installed inserts for attaching the hinge.

Pilasters

Pilasters are 3/4" thick, constructed from solid phenolic core. Hinged pilasters come with factory installed inserts for attaching the hinges. U-type bracket(s) shall be attached to the floor edge of the pilaster using Torx-head thru-bolts. Pilasters shall be attached to the floor using 3/8-16 stainless steel wedge anchor(s), hex nuts, and washers (all hardware provided in shoe kit).

Hardware

Bradley standard hardware is constructed from cast stainless steel with a satin brushed finish or stamped stainless steel (door hinge and indicator latch). Components are provided with all hardware and stainless steel torx-head fasteners to complete an installation on applications with concrete floors and masonry block walls.

Door Hardware

Surface mounted hinges are secured to the door and pilaster using factory installed inserts and Torx-head screws. Surface-mounted indicator slide latch with emergency egress requires no twisting motion and complies with all Federal ADA guidelines. Keeper is mounted to the pilaster using stainless steel Torx-head screws. Doors 32" wide or less are provided with a combination coat hook/bumper. Doors 34", 35" and 36" wide are provided with an individual coat hook, door bumper, and door pulls. Theft-resistant fasteners are supplied with all hardware.



Brackets

Stirrups-type, single-ear, double-ear, and U-brackets are provided.

Shoes

Shoes are 1-piece, 4" high, 300 Series stainless steel with #4 satin brushed finish and are secured to the face of the pilaster using Torx-head screws.

Product Compliance

Complies with

- ADA
- ICC/ANSI 117.1
- TAS



Listed by UL Environment to

- GreenGuard Gold



Serves the American Disabilities Act, ICC/ANSI 117.1, and California Title 24 and Texas Accessibility Standards guidelines, when installed according to these requirements. Consult local codes and standards.

Verify all rough-in dimensions prior to installation.

Consult local and national codes. Conformity and compliance to local and national codes is the responsibility of the installer.

Page 1 of 4

1/31/2024

[View Latest Version](#)

This information is subject to change without notice.

Bradley_Partitions_PhenolicNS_FloorBraced

© 2024 Bradley
P.O. Box 309, Menomonee Falls, WI 53052-0309
800 BRADLEY (800 272 3539) +1 262 251 6000
bradleycorp.com



Floor-Braced Restroom Partitions

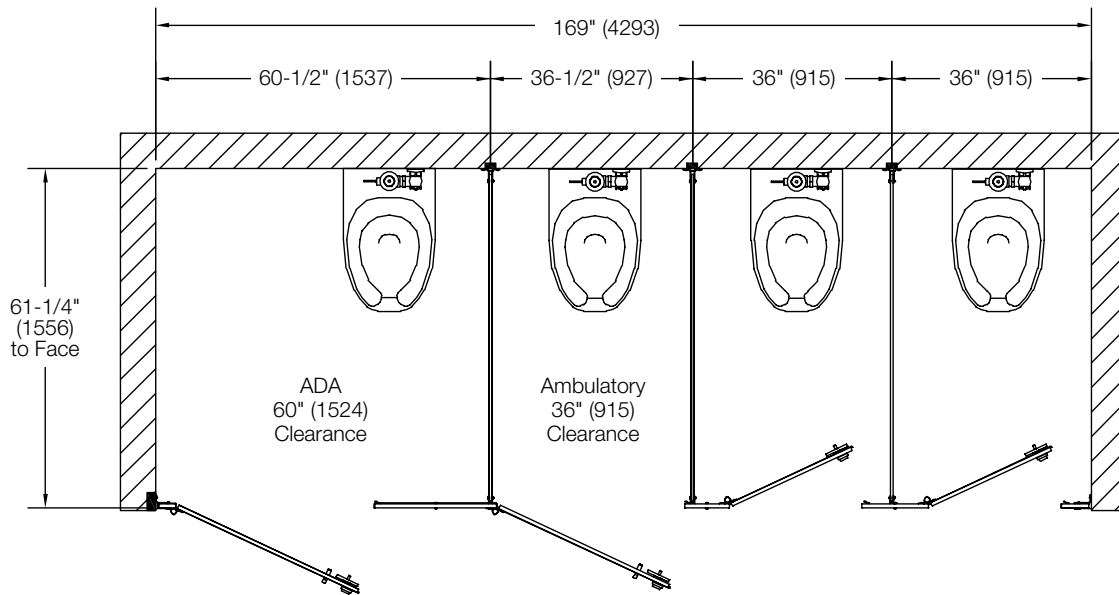
Phenolic Privacy Partitions — Series 500

Example of Dimensions – Top View

(mm)

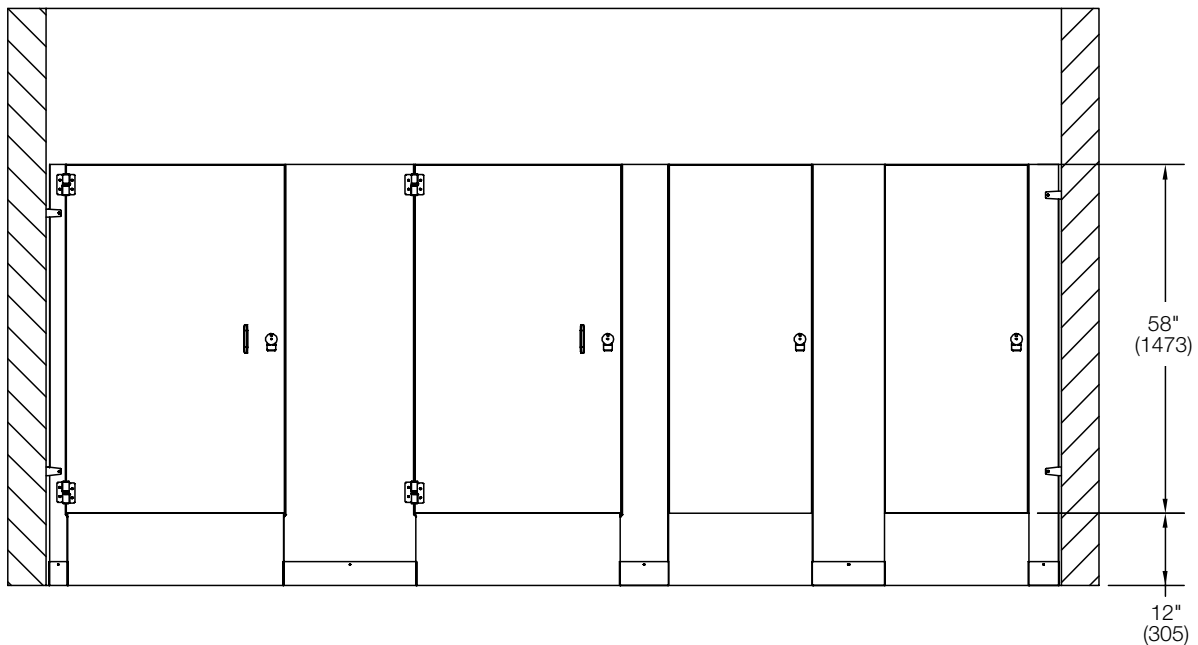


A wide range of stall widths are available.



Example of Dimensions – Front View

(mm)



Verify all rough-in dimensions prior to installation.

Consult local and national codes. Conformity and compliance to local and national codes is the responsibility of the installer.

Page 2 of 4

1/31/2024

[View Latest Version](#)

This information is subject to change without notice.

Bradley_Partitions_PhenolicNS_FloorBraced

© 2024 Bradley
P.O. Box 309, Menomonee Falls, WI 53052-0309
800 BRADLEY (800 272 3539) +1 262 251 6000
bradleycorp.com



A WATTS Brand

Floor-Braced Restroom Partitions

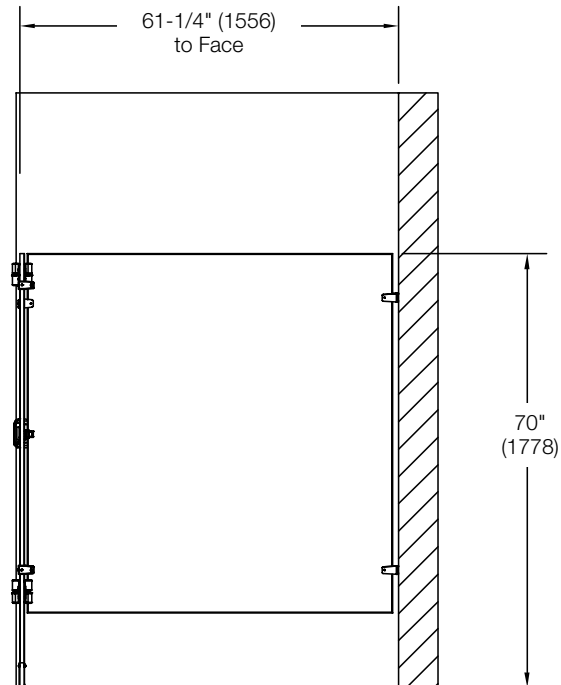
Phenolic Privacy Partitions — Series 500

Example of Dimensions – Side View

(mm)



A wide range of stall depths are available.



Verify all rough-in dimensions prior to installation.

Consult local and national codes. Conformity and compliance to local and national codes is the responsibility of the installer.

Page 3 of 4 1/31/2024

This information is subject to change without notice.

Bradley_Partitions_PhenolicNS_FloorBraced

[View Latest Version](#)

© 2024 Bradley
P.O. Box 309, Menomonee Falls, WI 53052-0309
800 BRADLEY (800 272 3539) +1 262 251 6000
bradleycorp.com



A WATTS Brand

Floor-Braced Restroom Partitions

Phenolic Privacy Partitions — Series 500

Standard Selections (Must select one from each category)

Colors

NOTE: Click on any swatch to view as a larger image.

Asian Night		Raw Chestnut	
Carbon Ev		Shadow	
Fashion Grey		Sheer Mesh	
Friston Ash		Slate Grey	
Graphite Nebula			

Door Hardware

Stainless Steel Indicator Latch (STD)

Hinges

Stainless Steel Surface-Mounted Hinge (STD)

Brackets

Stainless Steel 2-Stirrup Brackets (STD)

Stainless Steel 3-Stirrup Brackets

Continuous Stainless Steel Brackets

Optional Selections

Miscellaneous

Cutouts



Any directional wood grain panel taller or deeper than 58" will run perpendicular to the direction throughout the rest of the partition design. If a panel depth or height exceeds 58", please review for pattern conflicts.

Verify all rough-in dimensions prior to installation.

Consult local and national codes. Conformity and compliance to local and national codes is the responsibility of the installer.

Page 4 of 4

1/31/2024

[View Latest Version](#)

This information is subject to change without notice.

Bradley_Partitions_PhenolicNS_FloorBraced

© 2024 Bradley

P.O. Box 309, Menomonee Falls, WI 53052-0309
800 BRADLEY (800 272 3539) +1 262 251 6000
bradleycorp.com