



A WATTS Brand

S19-244, S19-244FW Laboratory Application Eyewash and Eye/Face Wash Units

- Halo™ delivers the most effective eye/face washdown coverage and spray pattern
- Exceeds American National Standard Z358.1 Specifications
- Chrome-plated brass pipe and fittings
- Universal identification sign and inspection tag included
- Fully-assembled and factory-tested eyewash or eye/face wash with hinged dust covers
- Full, one-year warranty
- Halo is covered by one of more of the following patents: 9,700,484; 9,314,398; D662220; D673298; D662605; D685920. Other patents pending.

Specifications

Unit design saves space and fits easily into any work environment. Halo eyewash or eye/face wash provides effective washdown coverage and spray pattern. Units operate quickly by a large, highly visible push handle. Safe, steady water flow under varying water supply conditions from 30–90 psi is assured by integral flow control.



The ANSI Z358.1 standard requires an uninterrupted supply of flushing fluid. Bradley plumbed emergency fixtures require a minimum of 30 psi flowing pressure.



This plumbing fixture is not intended to dispense water for human consumption through drinking or for preparation of food or beverages.

Standard Equipment

Eyewash

The Halo eyewash system offers a high performance rinsing platform that provides rapid relief to an individual's eyes that have been injured by chemicals or particulate. The eyewash includes an integral 5.1 gpm flow control providing water at a safe velocity while maintaining its effectiveness (exceeds minimum water flow of 0.4 gpm at 30 psi). Safe, steady water flow under varying water supply conditions from 30–90 psi is assured by integral flow control in the sprayhead assembly.

Eye/Face Wash

The Halo eye/face wash system offers a high performance rinsing platform that provides rapid relief to an individual's eyes and face that have been injured by chemicals or particulate. This system provides the most complete face wash available in the market. The eye/face wash includes an integral 5.1 gpm flow control providing water at a safe velocity while maintaining its effectiveness (exceeds minimum water flow of 3.0 gpm at 30 psi). Safe, steady water flow under varying water supply conditions from 30–90 psi is assured by integral flow control in the sprayhead assembly.

Valve

Chrome-plated brass ½" NPT stay-open ball valve. Hand operated by a large, highly visible stainless steel push handle.

Pipe and Fittings

Chrome-plated brass pipe and fittings

Water Supply

½" NPT



Local codes may require the installation of a backflow prevention valve to complete proper installation. Compliance with local codes is the responsibility of the installer. Valve must be tested annually to verify that it is functioning properly. Backflow prevention valves are not included with the fixture and may be supplied by the contractor or purchased from Bradley Corporation.



All dimensions assume standard thread engagement. Variations in manufacturing allow for +/- 1/8" (3 mm) per threaded joint. To find the tolerance of a dimension, add the number of thread joints in between a dimension and multiply it by 1/8" (3 mm).

Model S19-244



Model S19-244FW



Model

S19-244

S19-244FW

Description

Laboratory Application Eyewash Unit

Laboratory Application Eye/Face Wash Unit

Product Compliance

- Classified by Underwriters Laboratory Inc., to ANSI Z358.1

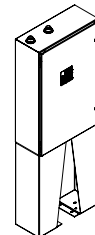
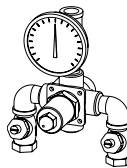


Tepid Water Options

[Navigator S19-2000 EFX8
Emergency Thermostatic Mixing Valve](#)

[Bradley's CLE-Series
Tankless Water Heater **Powered by Keltech™**](#)

NAVIGATOR



Satisfies ANSI/ISEA Z358.1 tepid water requirements.



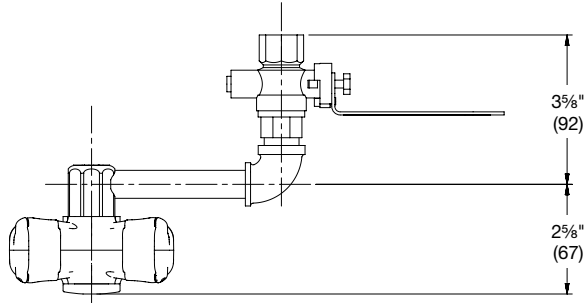
A WATTS Brand

S19-244, S19-244FW Laboratory Application Eyewash and Eye/Face Wash Units

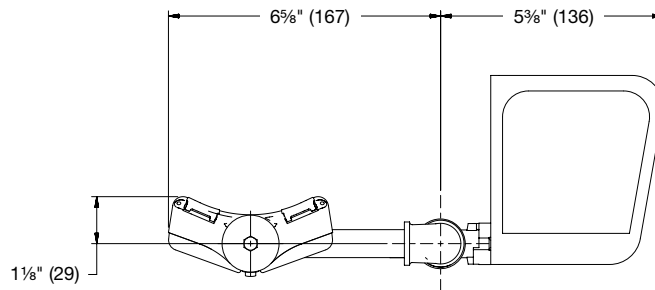
Dimensions – Model S19-244

(mm)

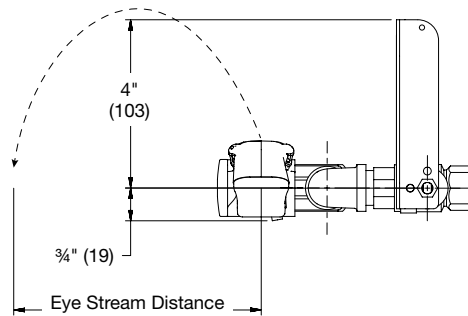
Top View



Front View



Side View





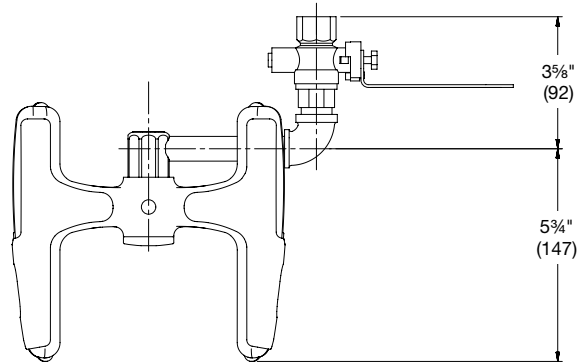
A WATTS Brand

S19-244, S19-244FW Laboratory Application Eyewash and Eye/Face Wash Units

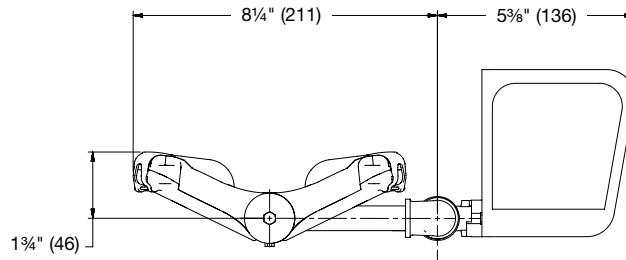
Dimensions – Model S19-244FW

(mm)

Top View



Front View



Side View

