

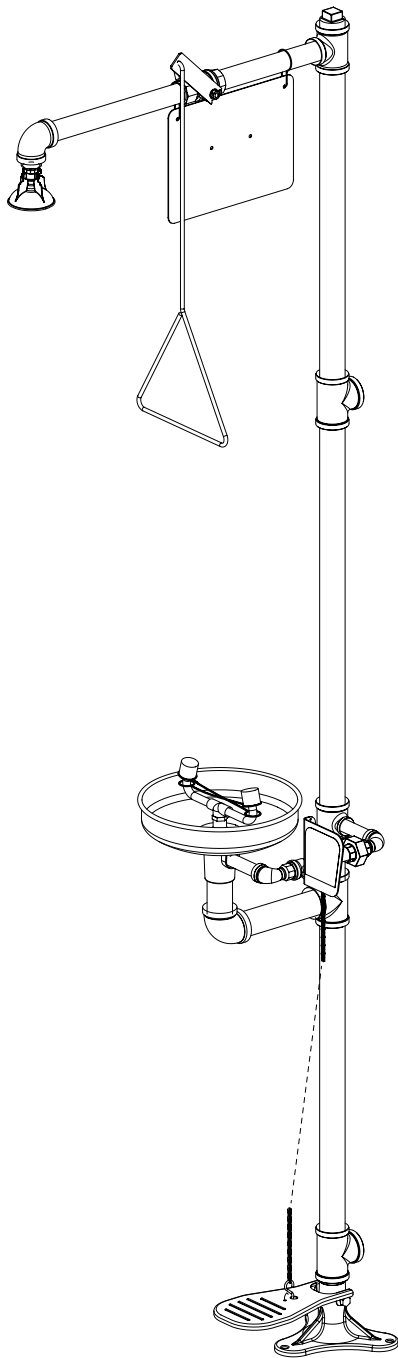
Installation

S19-310LL

Combination Drench Shower and Eyewash

Table of Contents

Pre-Installation Information	2
Supplies Required	3
Secure Base to Floor	3
Assemble Components	3
Connect Water Supply	3
Assembly of Components	4
Parts List	5



Read the instructions in this manual before beginning installation. Save these instructions and refer to them for inspection, maintenance and troubleshooting information.

For questions regarding the operation, installation or maintenance of this product, visit bradleycorp.com or call 800.BRADLEY (800.272.3539).

Product warranties and parts information may also be found under “Resources” on our website at bradleycorp.com.



Safety Information

To ensure proper operation:

Installation

This fixture has been designed and 3rd party tested to meet ANSI/ISEA Z358.1. The system must be tested periodically to be sure it is functioning properly to meet the standard. Please refer to the ANSI/ISEA Z358.1 standard on testing requirements.

The installation, maintenance and location of all safety drench showers, eye and eye/face washes must comply with the requirements of ANSI/ISEA Z358.1. Workers who may come in contact with potentially hazardous materials should be trained regarding the location and proper operation of emergency equipment per ANSI/ISEA Z358.1.

ANSI/ISEA Z358.1 requires this unit to be used with a clean, potable, uninterrupted supply of tepid water. Bradley plumbed emergency fixtures require a minimum of 30 psi flowing pressure in order to function as designed and meet the ANSI/ISEA Z358.1 standard.

Before installation make sure that this equipment will meet the requirements of the potential hazardous contaminants in your location.

Installation of this system must be completed by a qualified plumber in compliance with all national and local codes. Compliance and conformity to drain requirements and other local codes and ordinances is the responsibility of the installer.

Weekly Inspections

To ensure all emergency shower and eye/face wash fixtures are ready to be used when needed, regular checks and maintenance must be conducted. Weekly inspections must be conducted on all safety equipment to make sure a suitable flushing fluid supply is present and to make sure the equipment is in good operating condition.

Water Temperature

ANSI/ISEA Z358.1 requires tepid water. Suitable range is 60°F to 100°F (16°C to 38°C). Personal injury is possible outside this temperature range.

Supplies Required

- (3) 3/8" floor anchors and bolts
- Teflon tape and pipe sealant
- Piping to 1-1/4" NPT water supply inlet and 1-1/4" NPT drain outlet on unit
- Adequate supply pipe supports
- Minimum 4" (102mm) drain to accommodate 30 gallons (115 liters) per minute discharge for shower waste
- OPTIONAL: sign-mounting hardware



Local codes may require the installation of a backflow prevention valve to complete proper installation. Backflow prevention valves are not included with the fixture and may be supplied by the contractor or purchased from Bradley Corporation.

Secure Base to Floor

1. Install three suitable anchors (supplied by installer) for 3/8" bolts in the floor.
2. Bolt the base to the floor anchors using 3/8" bolts (supplied by installer).

Assemble Components

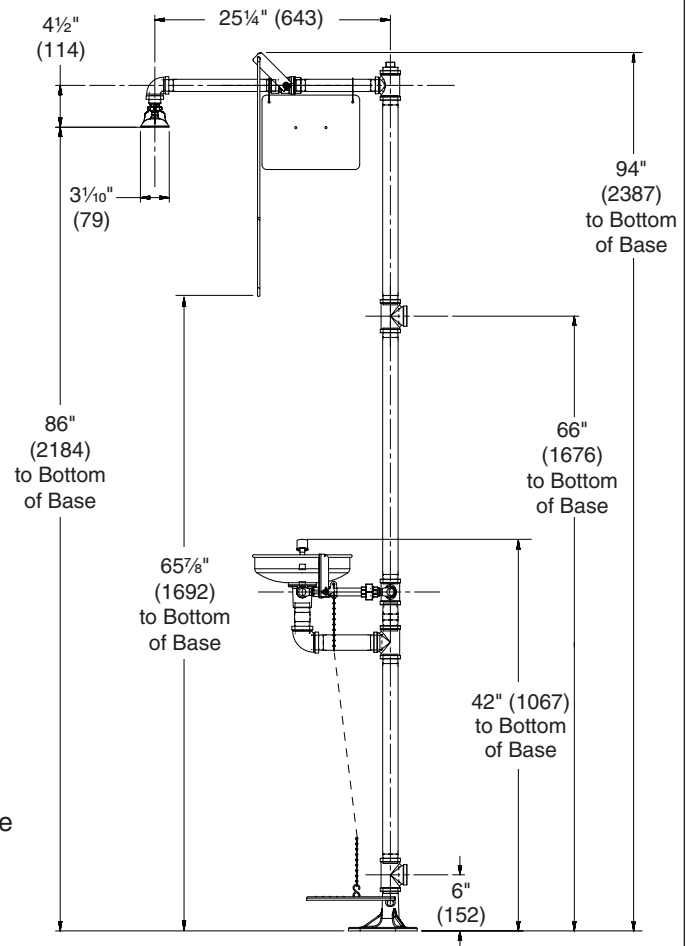
1. Assemble the remaining unit components as shown on page 4.
2. Apply pipe sealant (by installer) to all male-threaded pipe joints.
3. Use the rubber grip pad provided or a strap wrench around pipes when tightening to prevent marring. Place the grip pad on the pipe, then put the wrench over the grip pad and turn the pipe with the wrench.
4. When connecting the steel chain, first connect the chain to the "S" hook on the foot treadle. Then, with the foot treadle raised up, straighten the chain and connect a link to the "S" hook on the valve handle. Make sure the chain is pulled tight. The length of chain will vary.
5. Bottom edge of the showerhead should be 86" (2184 mm) to bottom of base.

Connect Water Supply

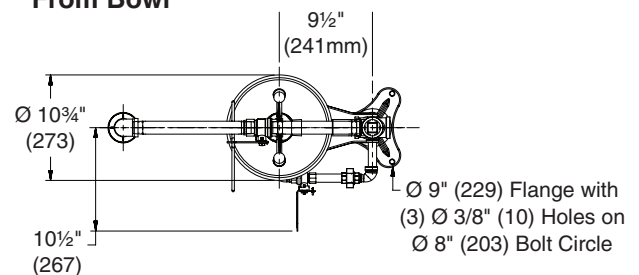
NOTICE! Do not rely on Bradley's Combination Unit to support supply piping.

1. Connect water supply piping to 1-1/4" NPT inlet on unit (piping by installer). Provide adequate supports (by installer) for supply pipe using pipe hangers or other means.
2. Connect drain piping to 1-1/4" NPT drain outlet on unit (piping by installer).
3. Hang the safety sign from the unit with the curtain hooks provided (or mount it to the wall using sign-mounting hardware by installer).
4. Open water supply lines. Test for leaks and adequate water flow.

(mm)



Top View
From Bowl

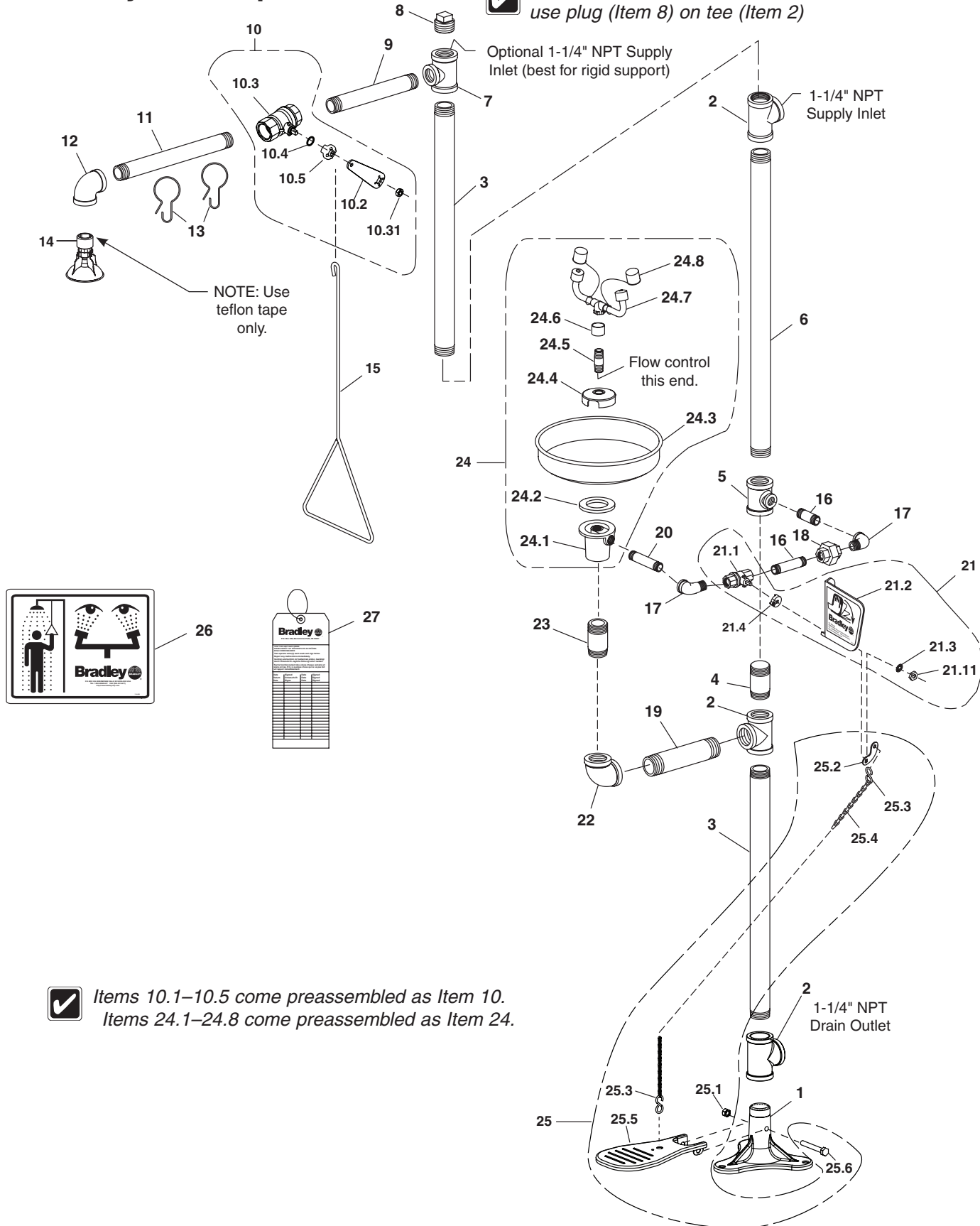


All dimensions assume standard thread engagement. Variations in manufacturing allow for +/- 1/8" (3mm) per threaded joint. To find the tolerance of a dimension, add the number of thread joints in between a dimension and multiply it by 1/8" (3mm).

Assembly of Components



If tee (Item 7) is used as a supply inlet, use plug (Item 8) on tee (Item 2)



Parts List

Item	Part No.	Qty.	Description	Item	Part No.	Qty.	Description
1	131-059	1	Base	21.1	S27-282	1	1/2" Ball Valve with Jam Nut
2	169-727	3	Pipe Tee 1-1/4" NPT	21.11	110-215	1	Jam Nut only
3	113-006LW	2	Pipe 1-1/4" NPT x 22-1/2"	21.2	S08-336	1	Handle Assembly
4	S06-136	1	Plugged Nipple 1-1/4" IPS x 3"	21.3	142-002DA	1	Lockwasher
5	169-841	1	Reducing Tee	21.4	153-372R	1	Adapter
6	113-006LC	1	Pipe 1-1/4" NPT x 27-1/2"	22	169-764	1	90° Pipe Elbow 1-1/4" NPT
7	169-722	1	Reducing Tee	23	113-006LE	1	Pipe Nipple 1-1/4" NPT x 3"
8	169-724	1	Pipe Plug 1-1/4" NPT	24	S90-285	1	Eyewash Bowl Assembly
9	113-006LL	1	Pipe 1" NPT x 9"	24.1	111-039	1	Inlet-Drain Fitting
10	S30-059	1	Stay-Open Ball Valve 1" NPT	24.2	124-028	1	Center Seal Gasket
10.2	128-201	1	Handle	24.3	187-053	1	Dust Cover Assembly
10.3	S27-278	1	1" Ball Valve with Jam Nut	24.4	173-009	1	Cup Strainer
10.31	110-214	1	Jam Nut only	24.5	S21-071	1	Stem Pipe Assembly
10.4	124-048	1	Washer, Friction	24.6	113-1159	1	Spacer, Drain
10.5	153-489	1	Adapter	24.7	S05-091	1	Eyewash Yoke
11	113-006LK	1	Pipe 1" NPT x 12"	24.8	107-371	2	Tethered Dust Cover
12	169-847	1	90° Elbow 1" NPT	25	S45-572	1	Foot Treadle Kit
13	151-001	2	Curtain Hook	25.1	161-163	1	Nut
14	S24-188	1	Showerhead Assembly	25.2	128-136	1	Valve handle
15	128-156A	1	Pull Rod	25.3	269-646	2	"S" Hook
16	269-915	1	Grip Pad (not shown)	25.4	134-009A	1	Stainless Steel Chain
17	169-025	2	Elbow 1/2" NPT	25.5	181-014	1	Treadle
18	169-726	1	Union 1/2" Female NPT	25.6	160-382	1	Screw
19	113-006QX	1	Pipe 1-1/4" NPT x 7-3/32"	26	114-052	1	Safety Sign
20	113-006LQ	3	Pipe 1/2" NPT x 3-1/2"	27	204-421	1	Emergency Inspection Tag
21	S30-070	1	1/2" Valve/Handle Prepack				

Prepack S30-071 includes items 21.11, 21.2, 21.3, 21.4