



A WATTS Brand

Euro Style Restroom Partitions

Phenolic LT — FLOAT Series

FLOAT Series Features

- Modern minimalist design
- Flush surface construction
- Exclusive new Phenolic LT material
- Maintenance-free, quiet, 180° gravity slow-close hinge (not finger protection)
- Robust and durable
- Light weight and easier-to-install design
- Headrail and feet are recessed 6 inches (152.4 mm) from front panel face
- Available in a range of standard and custom colors

Construction

Solid "sandwich-type" construction 1.4 inches (36 mm) thick with a 0.1-inch (3 mm) solid grade face sheet laminate on both sides with a moisture-resistant, foam core. Vertical edges of door and pilaster are constructed by a rebated aluminum profile on both sides and aluminum framing around the edges. Sturdy aluminum framing in connection with solid aluminum brackets ensure the system's stability and resistance to warping. The frameless construction with recessed headrail and feet, along with hidden hardware, give the partition a floating look.

Phenolic LT materials are impact and scratch resistant. Anti-bacterial coating and non-porous surface reduce spread of germs.

Panels

Panels are 1.4 inches (36 mm) thick, constructed from 1/8-inch phenolic face sheets and are encased in an aluminum profile.

Doors

Doors are 1.4 inches (36 mm) thick, constructed from 1/8-inch phenolic face sheets and are encased in an aluminum profile. Interior rebated door catcher is flush integrated into the design. Integrated rubber bumper included for silent operation.

LED Occupancy Indicators (Optional)

LED occupancy indicators are an option for the FLOAT series. LED indicators are installed in the pilasters and illuminate green when the stall is not in use and illuminate red when the stall is in use. The LED is activated by the latch in the locking mechanism of the door. The LED indicator has hidden electrical wires in the panel and requires a 12VDC electrical connection from an accessible outlet (plugged into grounded electrical outlet or hardwired into an electrical junction box. Transformer not provided). Due to variations in layout and pilaster widths of an ambulatory stall, the LED indicator may be partially obscured from the inside of the ambulatory stall only.

Pilasters

Pilaster are 1.4 inches (36 mm) thick, constructed from 1/8-inch phenolic face sheets and are encased in an aluminum profile.

Door Hardware

Doors are equipped with 180° self-closing hinges and are provided with an individual coat hook and door bumper. Hidden self-closing hinges are also an available option. Stainless steel door knob has an easy-to-manuever paddle built into the locking wheel on the inside. A white/red indication latch and emergency release feature is integrated on the outside of the door knob. The emergency release uses a 4 mm (5/32 inch) L-key that is inserted into the center of the door knob from the outside to unlock the door. ADA door pull is not included as a default. It is available at an additional cost.

Verify all rough-in dimensions prior to installation.

Consult local and national codes. Conformity and compliance to local and national codes is the responsibility of the installer.

Page 1 of 5

8/2/2024

[View Latest Version](#)

This information is subject to change without notice.

Bradley_Partitions_FLOAT_Series



FLOAT Series

Brackets

Continuous brackets are provided.

Feet

Feet are constructed of aluminum and are recessed back 5.9 inches (150 mm) in connection with anodized aluminum holder to give the system a floating appearance. A T-connector is screwed into the partition and the front wall for stabilization.

Height

Standard height of 81.9 inches (2080 mm) including the 4-inch (101.6 mm) floor clearance.

Headrail

A 1.2-inch (30 mm) x 1.2-inch (30 mm) aluminum headrail runs 5.9 inches (150 mm) recessed along the top of the front wall to lend stability to the system and give the system a floating appearance.

Product Compliance

Complies with

- ADA
- ASTM D6578
- ASTM D2794
- ASTM E84 Class B



Serves the American Disabilities Act and ICC/ANSI 117.1 guidelines, citations 306, 308, 309.4, 609.4 when installed according to these requirements. Consult local codes and standards.

Complementary Bradley Products

- [Elvari Grab Bars](#)
- [Elvari Napkin Disposal, Surface Mounted](#)
- [Elvari Shelf, Surface Mounted, With or Without Hooks](#)
- [Elvari Toilet Paper Dispenser, Recessed or Surface Mounted](#)
- [Elvari Coat/Robe Hook](#)
- [Elvari Seat Cover Dispensers, Recessed or Surface Mounted](#)

© 2024 Bradley

P.O. Box 309, Menomonee Falls, WI 53052-0309
800 BRADLEY (800 272 3539)

+1 262 251 6000
bradleycorp.com



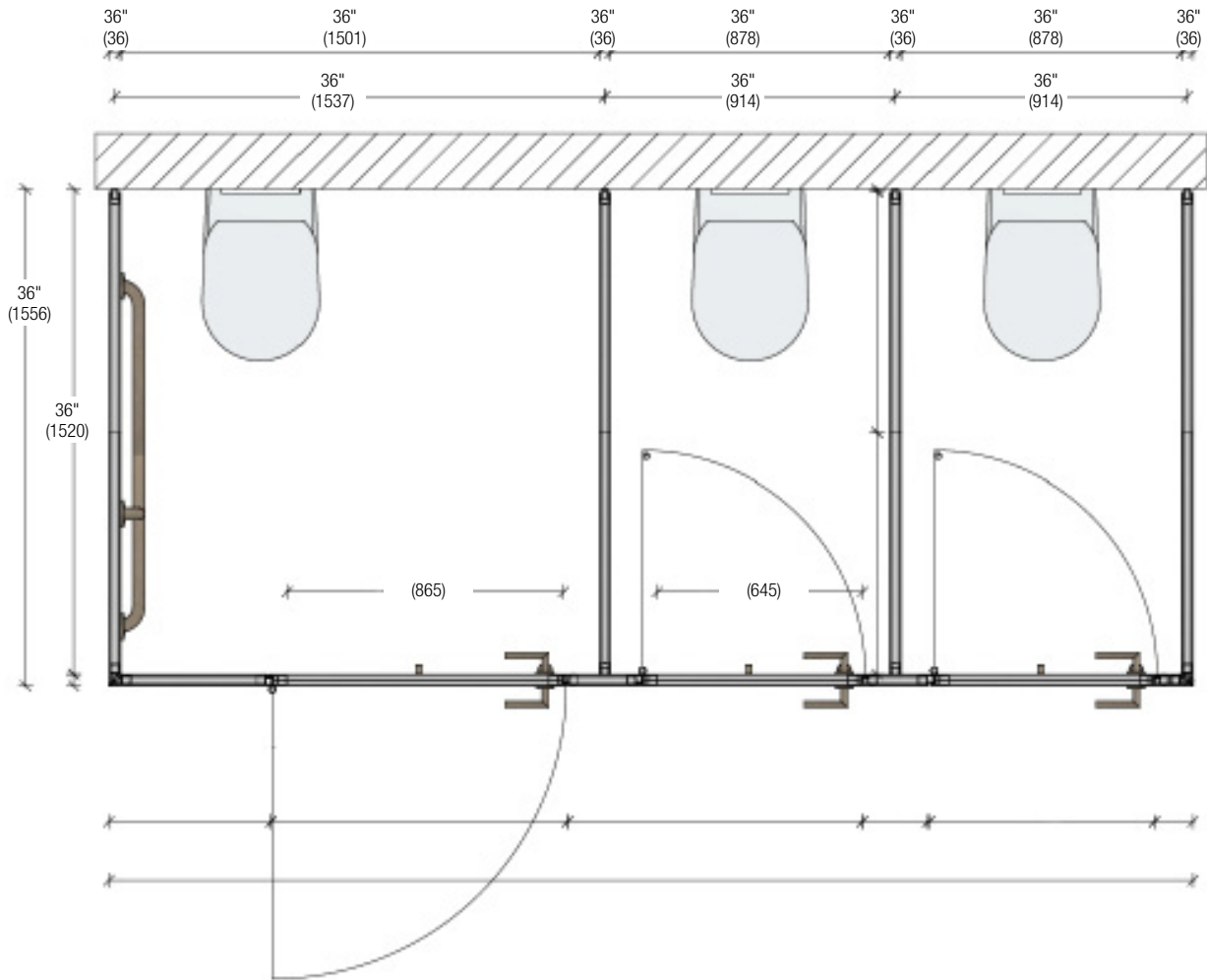
Euro Style Restroom Partitions

Phenolic LT – FLOAT Series

Example of Stall Width Dimensions – Top View

(mm)

☒ A wide range of stall widths are available.



Verify all rough-in dimensions prior to installation.

Consult local and national codes. Conformity and compliance to local and national codes is the responsibility of the installer.

Page 2 of 5

8/2/2024

[View Latest Version](#)

This information is subject to change without notice.
Bradley_Partitions_FLOAT_Series

© 2024 Bradley
P.O. Box 309, Menomonee Falls, WI 53052-0309
800 BRADLEY (800 272 3539) +1 262 251 6000
bradleycorp.com



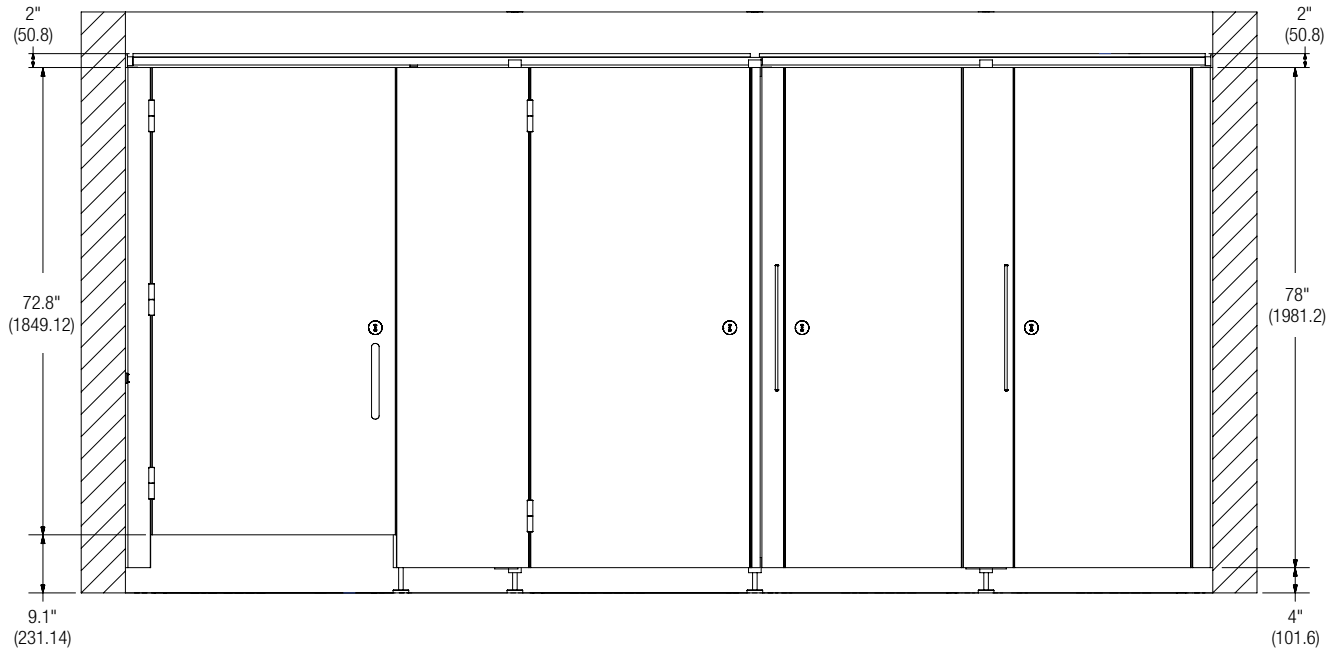
A WATTS Brand

Euro Style Restroom Partitions

Phenolic LT — FLOAT Series

Set Stall Height Dimensions – Front View (mm)

☒ There is a 9" (228.6 mm) AFF option available for ADA stalls.



Verify all rough-in dimensions prior to installation.

Consult local and national codes. Conformity and compliance to local and national codes is the responsibility of the installer.

Page 3 of 5 8/2/2024

[View Latest Version](#)

This information is subject to change without notice.
Bradley_Partitions_FLOAT_Series

© 2024 Bradley
P.O. Box 309, Menomonee Falls, WI 53052-0309
800 BRADLEY (800 272 3539) +1 262 251 6000
bradleycorp.com



A WATTS Brand

Euro Style Restroom Partitions

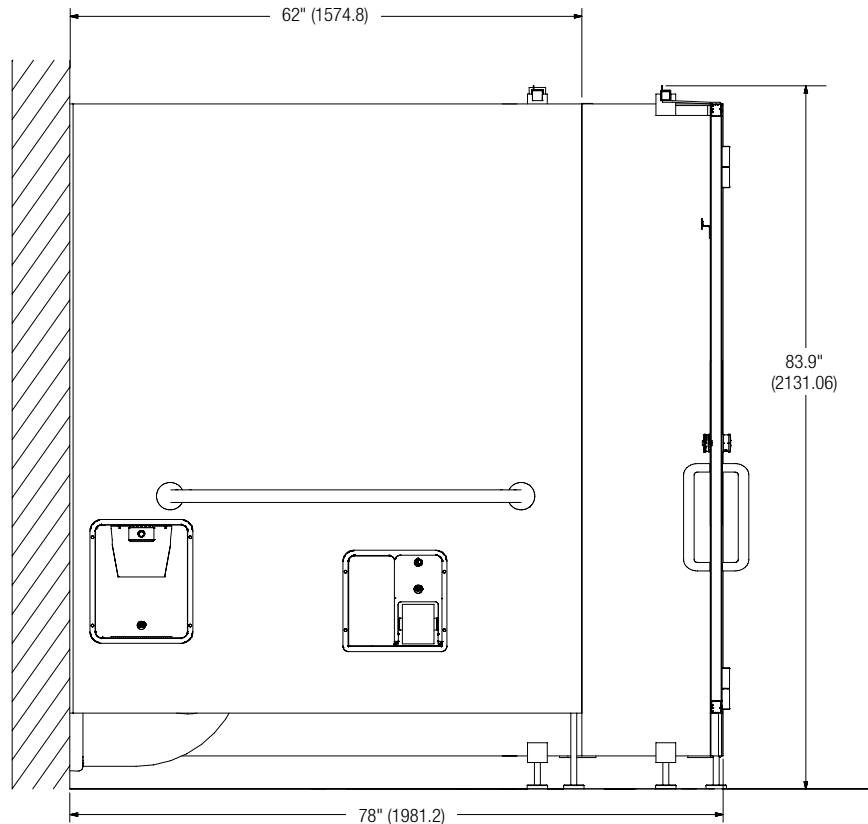
Phenolic LT — FLOAT Series

Example of Stall Depth Dimensions – Side View

(mm)



A wide range of depths are available.



Verify all rough-in dimensions prior to installation.

Consult local and national codes. Conformity and compliance to local and national codes is the responsibility of the installer.

Page 4 of 5

8/2/2024

[View Latest Version](#)

This information is subject to change without notice.

Bradley_Partitions_FLOAT_Series

© 2024 Bradley

P.O. Box 309, Menomonee Falls, WI 53052-0309
800 BRADLEY (800 272 3539)

+1 262 251 6000
bradleycorp.com



A WATTS Brand








Euro Style Restroom Partitions

Phenolic LT — FLOAT Series

Standard Selections (select one)

Colors

NOTE: Click on any swatch to view as a larger image.

- | | |
|---------------------|-----------------------------------------------------------------------------------------------|
| 18074 - Atlantic |  Atlantic |
| 35003 - Birch |  Birch |
| 30013 - Dark Walnut |  Dark Walnut |
| 12204 - Manhattan |  Manhattan |
| 12231 - Slate Grey |  Slate Grey |
| 70004 - Storm Cloud |  Storm Cloud |
| 10140 - White |  White |

Custom Custom color: _____

Optional Selections

Miscellaneous

LED LED Occupancy Indicator

Verify all rough-in dimensions prior to installation.

Consult local and national codes. Conformity and compliance to local and national codes is the responsibility of the installer.

Page 5 of 5

8/2/2024

[View Latest Version](#)

This information is subject to change without notice.

Bradley_Partitions_FLOAT_Series

© 2024 Bradley

P.O. Box 309, Menomonee Falls, WI 53052-0309
800 BRADLEY (800 272 3539) +1 262 251 6000
bradleycorp.com