



# Euro Style Restroom Partitions

## Glass — LUCENT Series

### LUCENT Series Features

- Elegant option in enameled tempered glass
- Modern minimalist design
- Optimal for high end application
- Creates light, airy space
- Scratch resistant and easy to clean
- Strong, long-lasting, and safe
- Soft-closing hydraulic hinges
- Available in a range of standard colors
- 100% recyclable

### Construction

Scratch-proof, tempered glass with ceramic screen printing is 0.4 inches (10 mm) thick and fitted to stainless steel connecting brackets and fittings. A stainless steel headrail runs along the top and is recessed by 4.6 inches (118 mm). Each dividing wall uses 6 brackets to connect to the front panel and are secured using flush-fitting, stainless steel rosettes. Three stainless steel brackets connect the panel to the wall.

Materials are resistant to stains and corrosion.

### Panels, Doors & Pilasters

Panels are 0.4 inches (10 mm) thick and constructed from tempered glass that is resistant to stains and corrosion. All corners are polished smooth for aesthetic and safety purposes. Doors include an individual coat hook and door bumper.



Grab bars and all other accessories require pre-drilled holes during the manufacturing process. Accessory locations must be communicated prior to ordering.

### Door Hardware

Self-closing (hydraulic) hinges are standard featuring a soft-close function, ensuring a silent close. Using stainless steel brackets that act as a pivot point connected to the floor and headrail. Stainless steel door knob has an easy-to-manuever paddle built into the locking wheel on the inside. A white/red indication latch and emergency unlocking feature is integrated on the outside of the door knob. ADA door pull is not included as a default. It is available at an additional cost.

### Brackets

Stirrup-type brackets and aluminum door strips provided.

### Feet

Feet are constructed of stainless steel and are recessed back 4.7 inches (120 mm) on dividing panels.

### Height

Standard height of 85.1 inches (2162 mm) including 1.97-inch (50 mm) clearance. Glass panels end at 84.6 inches (2150 mm). Existing base tile must be less than 2.2 inches (50 mm) high.

### Headrail

An stainless steel headrail runs 4.7 inches (120 mm) recessed along the top of the front wall to lend stability to the system.

Verify all rough-in dimensions prior to installation.

Consult local and national codes. Conformity and compliance to local and national codes is the responsibility of the installer.

Page 1 of 5

8/2/2024

[View Latest Version](#)

This information is subject to change without notice.

Bradley\_Partitions\_LUCENT\_Series



### Product Compliance

#### Complies with

- ADA\*
- ASTM D6578



\* To include LUCENT partitions in your design, the ADA stall must be at least 62 inches (1575 mm) deep for a wall-mounted toilet and 65 inches (1650 mm) deep for a floor-mounted toilet, and at least 66 inches (1675 mm) wide.



Serves the American Disabilities Act and ICC/ANSI 117.1 guidelines, citations 306, 308, 309.4, 609.4 when installed according to these requirements. Consult local codes and standards.

### Complementary Bradley Products

- [Elvari Grab Bars](#)
- [Elvari Napkin Disposal, Surface Mounted](#)
- [Elvari Shelf, Surface Mounted, With or Without Hooks](#)
- [Elvari Toilet Paper Dispenser, Recessed or Surface Mounted](#)
- [Elvari Coat/Robe Hook](#)
- [Elvari Seat Cover Dispensers, Recessed or Surface Mounted](#)

© 2024 Bradley

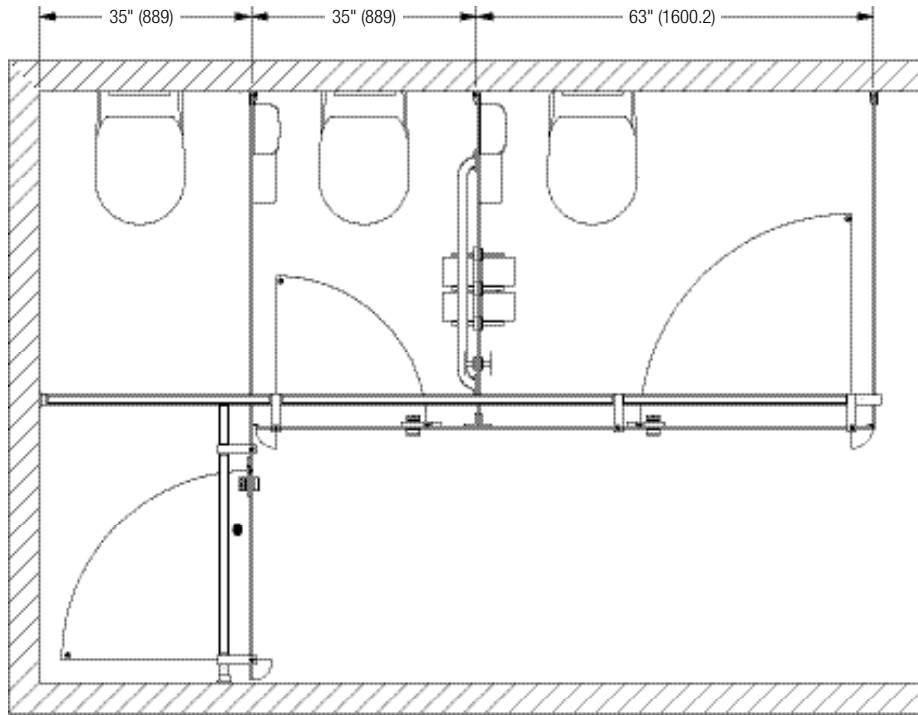
P.O. Box 309, Menomonee Falls, WI 53052-0309  
800 BRADLEY (800 272 3539)

+1 262 251 6000  
bradleycorp.com

### Example of Stall Width Dimensions – Top View

(mm)

☒ A wide range of stall widths are available.



Verify all rough-in dimensions prior to installation.

Consult local and national codes. Conformity and compliance to local and national codes is the responsibility of the installer.

Page 2 of 5

8/2/2024

[View Latest Version](#)

This information is subject to change without notice.

Bradley\_Partitions\_LUCENT\_Series

© 2024 Bradley  
P.O. Box 309, Menomonee Falls, WI 53052-0309  
800 BRADLEY (800 272 3539) +1 262 251 6000  
bradleycorp.com



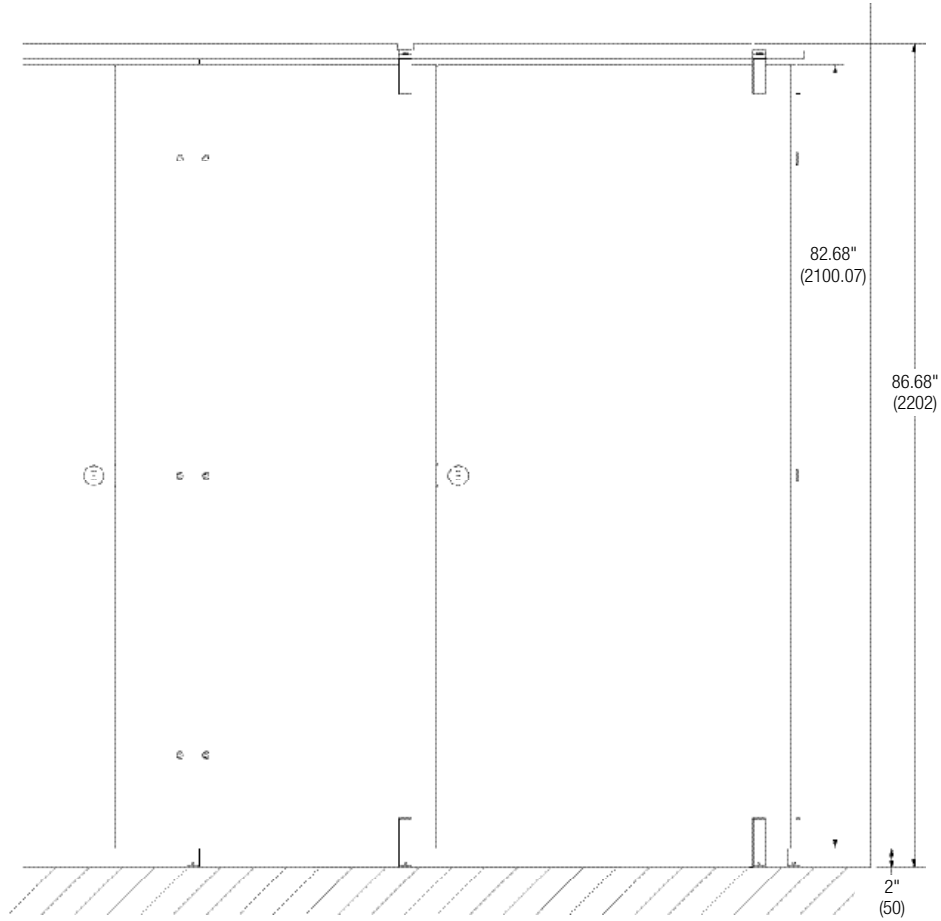
# Euro Style Restroom Partitions

## Glass — LUCENT Series

### Set Stall Height Dimensions – Front View

(mm)

- ☒ There is no 9" (228.6 mm) AFF option available for this series. In order to comply with ADA, the stall must exceed a depth of 62" (1575 mm) for a wall-mounted toilet and 65" (1650 mm) for a floor-mounted toilet, and the width must exceed 66" (1675 mm).



Verify all rough-in dimensions prior to installation.

Consult local and national codes. Conformity and compliance to local and national codes is the responsibility of the installer.

Page 3 of 5

8/2/2024

[View Latest Version](#)

This information is subject to change without notice.

Bradley\_Partitions\_LUCENT\_Series

© 2024 Bradley  
P.O. Box 309, Menomonee Falls, WI 53052-0309  
800 BRADLEY (800 272 3539) +1 262 251 6000  
bradleycorp.com



# Euro Style Restroom Partitions

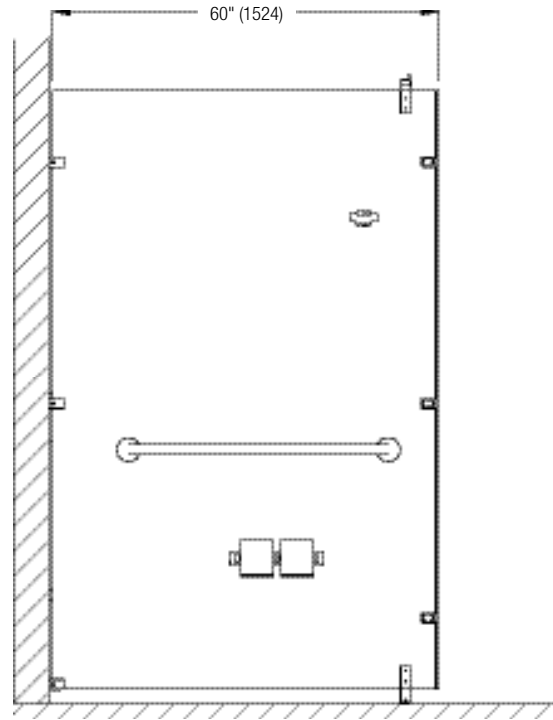
## Glass — LUCENT Series

### Examples of Stall Depth Dimensions – Side View

(mm)



A wide range of stall depths are available.



Verify all rough-in dimensions prior to installation.

Consult local and national codes. Conformity and compliance to local and national codes is the responsibility of the installer.

Page 4 of 5

8/2/2024

[View Latest Version](#)

This information is subject to change without notice.

Bradley\_Partitions\_LUCENT\_Series

© 2024 Bradley

P.O. Box 309, Menomonee Falls, WI 53052-0309  
800 BRADLEY (800 272 3539)

+1 262 251 6000  
bradleycorp.com



# Euro Style Restroom Partitions

## Glass — LUCENT Series

### Standard Selections (select one)

#### Colors

**NOTE:** Click on any swatch to view as a larger image.

7038 - Agate Gray  Agate Gray

9003 - Alabaster  Alabaster


7012 - Basalt Gray  Basalt Gray


5014 - Coastal Blue  Coastal Blue

7035 - Morning Fog  Morning Fog

9017 - Obsidian  Obsidian

1013 - Oyster White  Oyster White

6019 - Seagrass  Seagrass

6034 - Tide Pool  Tide Pool

Custom Custom color: \_\_\_\_\_

#### Hinges (select one)

STD Hydraulic, Self-Closing, Stainless Steel

### Optional Selections

#### Miscellaneous

CUTOUTS\*

\* All attachment points for accessories and hardware on the glass panels must be finalized before production. No modifications are possible during installation.

Verify all rough-in dimensions prior to installation.

Consult local and national codes. Conformity and compliance to local and national codes is the responsibility of the installer.

Page 5 of 5

8/2/2024

[View Latest Version](#)

This information is subject to change without notice.

Bradley\_Partitions\_LUCENT\_Series

© 2024 Bradley

P.O. Box 309, Menomonee Falls, WI 53052-0309  
800 BRADLEY (800 272 3539) +1 262 251 6000  
bradleycorp.com