



A WATTS Brand

# Euro Style Restroom Partitions

## Glass — SKYLINE Series

### SKYLINE Series Features

- Modern, luxurious and functional restroom solution
- Tempered glass ensuring safety and longevity in high-traffic environments
- Doors, sides, and dividing panels are room height for maximum privacy
- Easy to clean for more hygienic environments
- Scratch- and graffiti-resistant materials
- Background noise minimized with floor-to-ceiling partitions
- Quiet, soft-closing door function
- Custom fabrication according to building site dimensions
- Available in a range of standard colors
- Mortise-style handle and lock set

### Construction

Room-high partitions of 2 inch (50 mm) thick sandwich construction. 1.57 inch (40 mm) internal aluminum frame with 0.2 inch (5 mm) enamelled glass paneling on both sides. Vertical edges of doors and panels consist of a rebated aluminum profile which serve as the door stop. The completed construction is secured in a U-profile continuous aluminum bracket at floor, ceiling and wall and entirely flush mounted.

Materials are resistant to stains and corrosion.

### Panels, Doors & Pilasters

Panels are 2 inches (50 mm) total thickness consisting of a 1.57 inch (40 mm) internal aluminum frame with 0.2 inch (5 mm) thick tempered enamelled glass paneling on each side of the aluminum frame. Panels will be provided in two equal panels if stall is deeper than 39.4 inches (1000 mm). Corners polished smooth for aesthetic and safety purposes. Doors include an individual coat hook and door bumper.



Grab bars require pre-drilled holes during the manufacturing process. Accessory locations must be indicated on shop approved drawings.



Pre-installed structural ceiling support is necessary for drop ceilings.

### Door Hardware

Self-closing hydraulic hinge with soft close function, ensuring a silent close. Closing speed to be adjusted on site. ADA compliant stainless steel door handle in an L-shape with ADA compliant locking mechanism on the inside. A white/red indication latch and emergency unlocking feature is integrated on the outside of the door knob. The emergency release uses a 5/32 inch (4 mm) allen key that is inserted into the center of the door handle from the outside to unlock the door.

### Brackets

Continuous U-brackets for wall, floor, and ceiling are provided.

### Height

Custom fabrication according to building site dimensions.

Maximum system height: 118.1 inches (3000 mm).

### Frame

Complete aluminum profile at floor, wall and ceiling. Connection of dividing wall to front wall is concealed.

Verify all rough-in dimensions prior to installation.

Consult local and national codes. Conformity and compliance to local and national codes is the responsibility of the installer.

Page 1 of 5

8/2/2024

[View Latest Version](#)

This information is subject to change without notice.

Bradley\_Partitions\_SKYLINE\_Series



### Product Compliance

#### Complies with

- ADA\*

- ASTM D6578



\* To include SKYLINE partitions in your design, the ADA stall must be at least 64 inches (1625.5 mm) deep for a wall-mounted toilet and 67 inches (1702 mm) deep for a floor-mounted toilet. A 68 inch (1727 mm) width is required for either depth. ADA requirement of 9 inch toe space not provided with this design. Consult local Authority having Jurisdiction (AHJ).



Serves the American Disabilities Act and ICC/ANSI 117.1 guidelines, citations 306, 308, 309.4, 609.4 when installed according to these requirements. Consult local codes and standards.

### Complementary Bradley Products

- [Elvari Grab Bars](#)
- [Elvari Napkin Disposal, Surface Mounted](#)
- [Elvari Shelf, Surface Mounted, With or Without Hooks](#)
- [Elvari Toilet Paper Dispenser, Recessed or Surface Mounted](#)
- [Elvari Coat/Robe Hook](#)
- [Elvari Seat Cover Dispensers, Recessed or Surface Mounted](#)

© 2024 Bradley

P.O. Box 309, Menomonee Falls, WI 53052-0309  
800 BRADLEY (800 272 3539) +1 262 251 6000  
bradleycorp.com



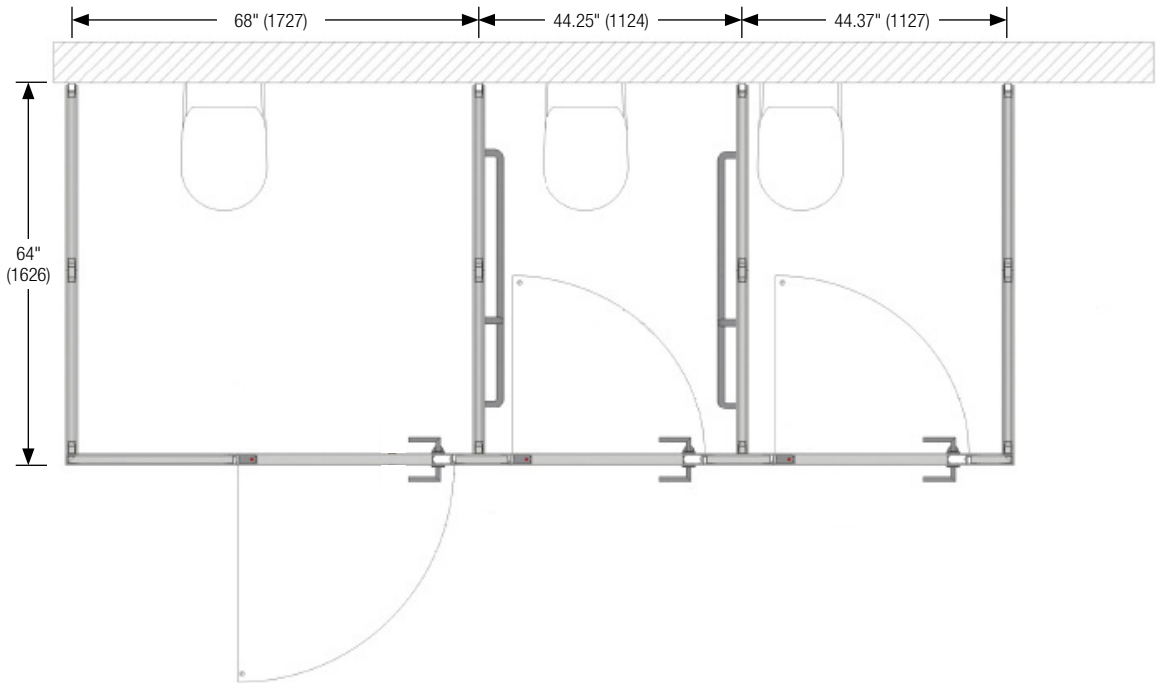
# Euro Style Restroom Partitions

## Glass — SKYLINE Series

### Example of Stall Width Dimensions – Top View

(mm)

 A wide range of stall widths are available.



Verify all rough-in dimensions prior to installation.  
Consult local and national codes. Conformity and compliance to  
local and national codes is the responsibility of the installer.  
Page 2 of 5 8/2/2024  
This information is subject to change without notice.  
Bradley\_Partitions\_SKYLINE\_Series

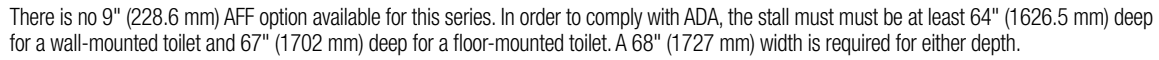
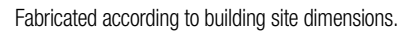
[View Latest Version](#)

© 2024 Bradley  
P.O. Box 309, Menomonee Falls, WI 53052-0309  
800 BRADLEY (800 272 3539) +1 262 251 6000  
bradleycorp.com



## Glass – SKYLINE Series


**(mm)**

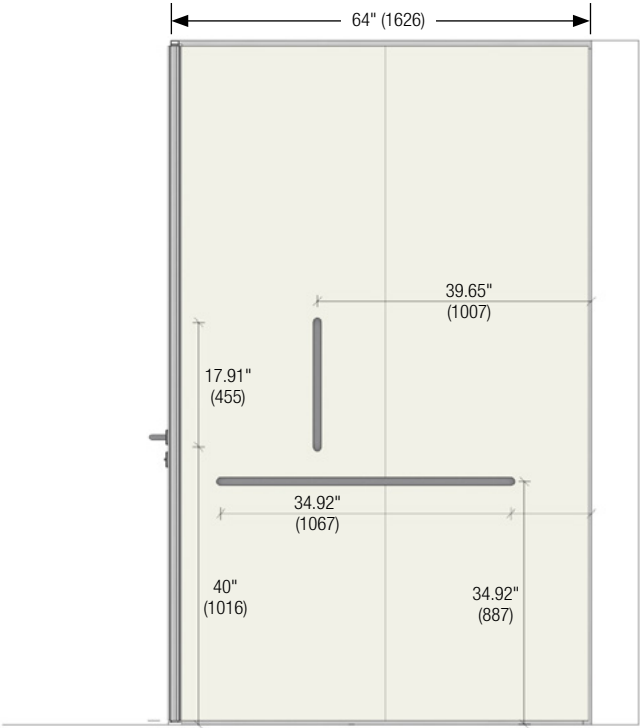


+1 262 251 6000  
bradleycorp.com



Examples of Stall Depth Dimensions – Side View (mm)

 A wide range of stall depths are available.



Verify all rough-in dimensions prior to installation.  
Consult local and national codes. Conformity and compliance to  
local and national codes is the responsibility of the installer.  
Page 4 of 5 8/2/2024  
This information is subject to change without notice.  
Bradley\_Partitions\_SKYLINE\_Series

[View Latest Version](#)

© 2024 Bradley  
P.O. Box 309, Menomonee Falls, WI 53052-0309  
800 BRADLEY (800 272 3539) +1 262 251 6000  
bradleycorp.com



A WATTS Brand

## Euro Style Restroom Partitions

### Glass — SKYLINE Series

#### Standard Selections (select one)

##### Colors

**NOTE:** Click on any swatch to view as a larger image.


7038 - Agate Gray  Agate Gray

9003 - Alabaster  Alabaster


7012 - Basalt Gray  Basalt Gray

5014 - Coastal Blue  Coastal Blue

7035 - Morning Fog  Morning Fog

9017 - Obsidian  Obsidian

1013 - Oyster White  Oyster White

6019 - Seagrass  Seagrass

6034 - Tide Pool  Tide Pool

Custom Custom color: \_\_\_\_\_

#### Hinges (select one)

STD Hydraulic, Self-Closing, Stainless Steel

#### Optional Selections

##### Miscellaneous

CUTOUTS\*

\* All attachment points for accessories and hardware on the glass panels must be finalized before production. No modifications are possible during installation.

Verify all rough-in dimensions prior to installation.

Consult local and national codes. Conformity and compliance to local and national codes is the responsibility of the installer.

Page 5 of 5 8/2/2024

This information is subject to change without notice.

Bradley\_Partitions\_SKYLINE\_Series

[View Latest Version](#)

© 2024 Bradley  
P.O. Box 309, Menomonee Falls, WI 53052-0309  
800 BRADLEY (800 272 3539) +1 262 251 6000  
bradleycorp.com