



A WATTS Brand

WS-1X-HN

Individual Pivoting Barrier-Free Wall Shower

- Ideal for Barrier-Free Shower Room
- Industry Unique Hinge Design for Quick and Easy Installation and Maintenance
- Completely Preassembled and Ready to Mount to a Wall
- Flexible Supply Connections

Specifications

Materials

Shower panel is type 300 Series stainless steel. All other exposed parts are stainless steel or chrome-plated brass. Supply inlets are flexible stainless steel hoses.

Standard Equipment

Shower Panel

Shower panel is constructed of 18 gauge stainless steel. Top and bottom covers are riveted onto shower panel.

Hinges

Stainless steel barrel hinges to mount shower to wall.

Valve Type as Selected

For more information on each valve type, please visit the Shower Valves product section at www.bradleycorp.com.

Soap Dish

Standard soap dish option (SD) is a cake soap tray formed from heavy-gauge stainless steel with satin finish. Mounted to wall.

Showerhead

Showerhead is chrome plated brass with 1.5 GPM (5.7 LPM) flow control, ball joint and adjustable spray pattern control (B).

Hand Shower

Consisting of hand shower with on-off control, a 60" stainless steel flexible hose and post style mounting bracket to hold to shower panel. Elevated in-line backflow preventer with quick disconnect for flexible hose.

Diverter Valve

Lever handle operation for easy transfer of water flow between fixed showerhead and hand-held shower spray.

Supply Inlets

Supply inlets are 24" flexible, stainless steel hoses with 1/2" NPT connections. Inlets are accessible through back of shower or through knockouts in the top and bottom covers.

ADA Requirements

- ☒ This shower complies with most, but not all, ADA dimensional requirements. Check local codes prior to installation.

Standard Selections (Must select one from each category)

Showerhead Height (select one)

6'-0" Standard Height

Valve Type (select one)

Hot/Tempered and Cold Supplies

- EF** Equa-Flo Pressure Balancing Valve
HD Equa-Flo HD Pressure Balancing Valve
TMV Thermostatic Mixing Valve

Single Tempered/Cold Supply

- AST** Air Pushbutton
SVL Single Compression Valve
TTPA TouchTime Pushbutton*
TTPB TouchTime Piezo Switch*

Showerhead Type

- B** Axis Showerhead w/ Ball Joint (Flow Rate = 1.5 GPM/5.7 LPM)
S15 Standard Showerhead (Flow Rate = 1.5 GPM/5.7 LPM)
S20 Standard Showerhead (Flow Rate = 2.0 GPM/7.6 LPM)



WS-1X-HN

Optional Selections

Ball Joint Type†

- LBJ** Lockable Ball Joint
NONE No Ball Joint

Supply Stop Type (select one)

- ST** Stops in Supplies for Valves
NONE No Supply Stops

Soap Type (select one)

- SD** Standard Soap Dish**
NSD No Soap Dish (Standard)

Slide Bar Type (select one)

- SB** 24" Slide Bar (currently available on WS-1X-HN model only)
NONE No Slide Bar

Slope Top Type (select one)

- SL** Sloped Top
NONE No Sloped Top

Shroud Type

- SHV** Vertical Shrouds (floor to ceiling height _____ ft. _____ in.)
SHH Horizontal Shroud (per 3' section)‡
NONE No Shroud

Hardware Type (select one)

- SC** Standard Screws
VS Vandal Resistant Screws

*TTPA and TTPB valves require a low-voltage UL/CSA listed 120VAC/12VDC plug-in adapter.

**Wall-mounted

† Only available on S15 and S20 Showerheads.

‡ Submittal drawings required.

Verify all rough-in dimensions prior to installation.

Consult local and national codes: conformity and compliance to local and national codes is the responsibility of the installer.

2.0 GPM and 2.5 GPM showerhead flow rate does not meet California Energy Commission 20 CCR T.20, Div. 2, 1601-1609.



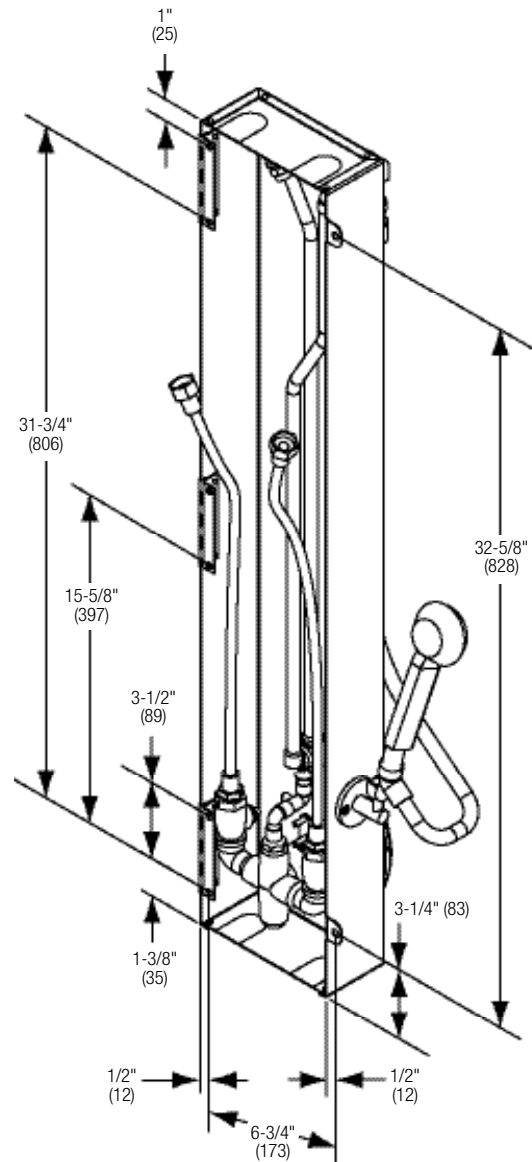
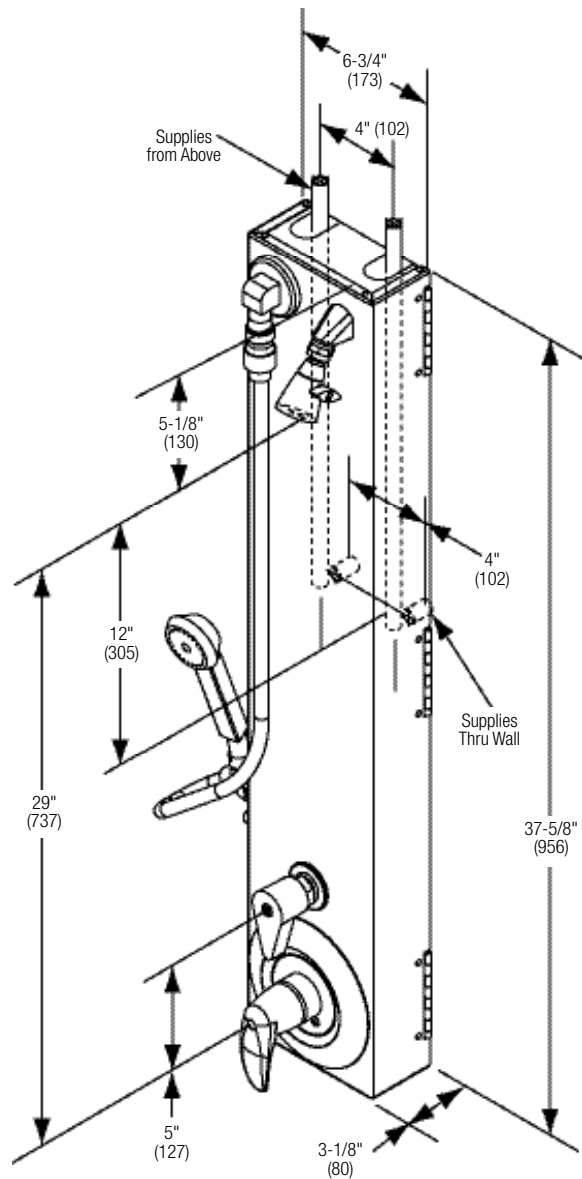
A WATTS Brand

WS-1X-HN

Individual Pivoting Barrier-Free Wall Shower

Rough-In Dimensions

(mm)



Equa-Flo Valve shown. Valve location and rough-ins same for other valves.