

ADD

Francesco Rota | 2014



ADD

Francesco Rota | 2014

Three letters and creativity takes shape. It arranges, detaches, changes and has fun. Introducing the ADD seating system, which elegantly meets the needs of contemporary work environments and space sharing. It is also an international award-winning success. Comfortable and versatile, the basic seating represents the first syllable of a language that speaks to different worlds. Two furniture elements can create a sofa. In a line, internal and external backrests join and separate tiny communities, with small tables and accessories for tablets and notebooks included in the composition. Countless combinations, a circle that encompasses the extremities of a meeting.



One seater



Two seater



Three seater



Classic mini



Classic mini — double



Side by side



Vis-à-vis — small



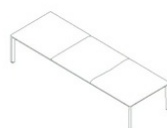
Vis-à-vis — big



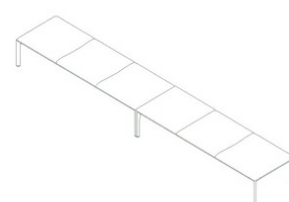
Classic



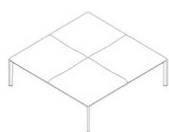
Stool



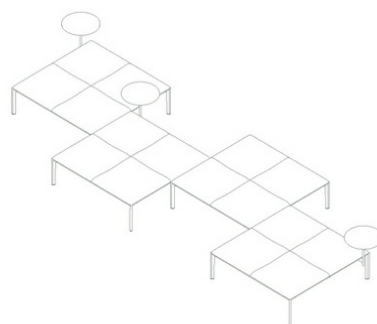
Bench



Long bench



Square bench



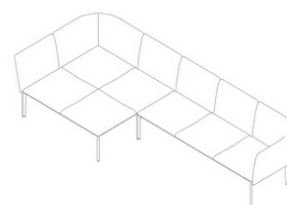
Square bench system



Lounge



Lounge — double



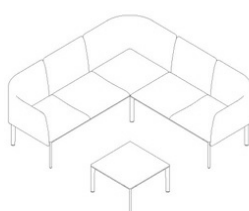
Sofa



L_shape



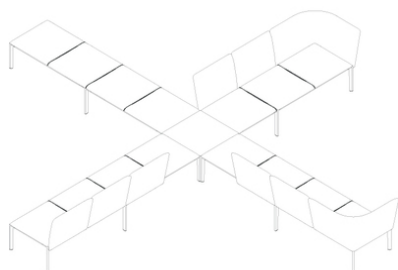
C_shape



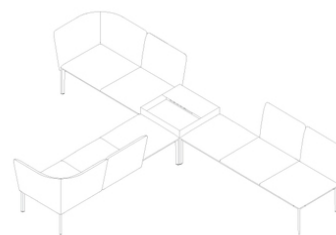
L_shape — big



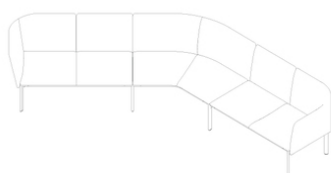
L_shape — open



X_shape



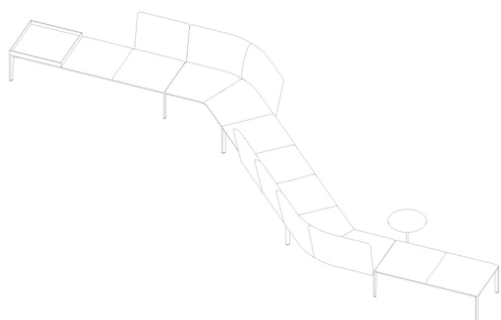
T_shape



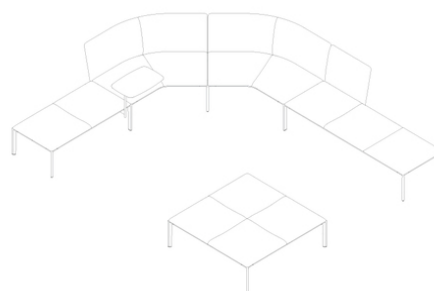
V_shape in



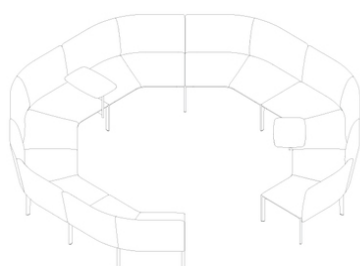
V_shape out



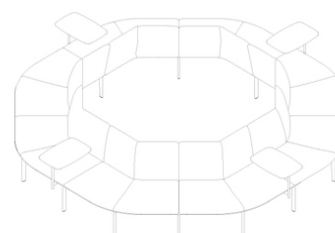
S_shape



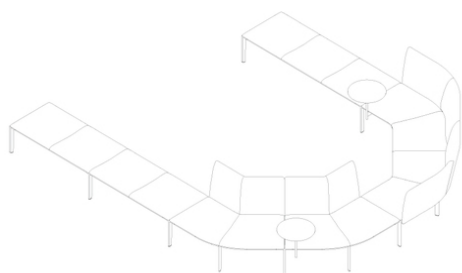
Big lounge



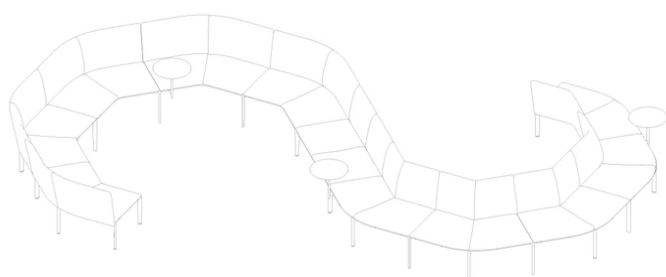
Round in



Round out



U_shape



S_shape — big



One



Two



Four

ADD

Francesco Rota | 2014



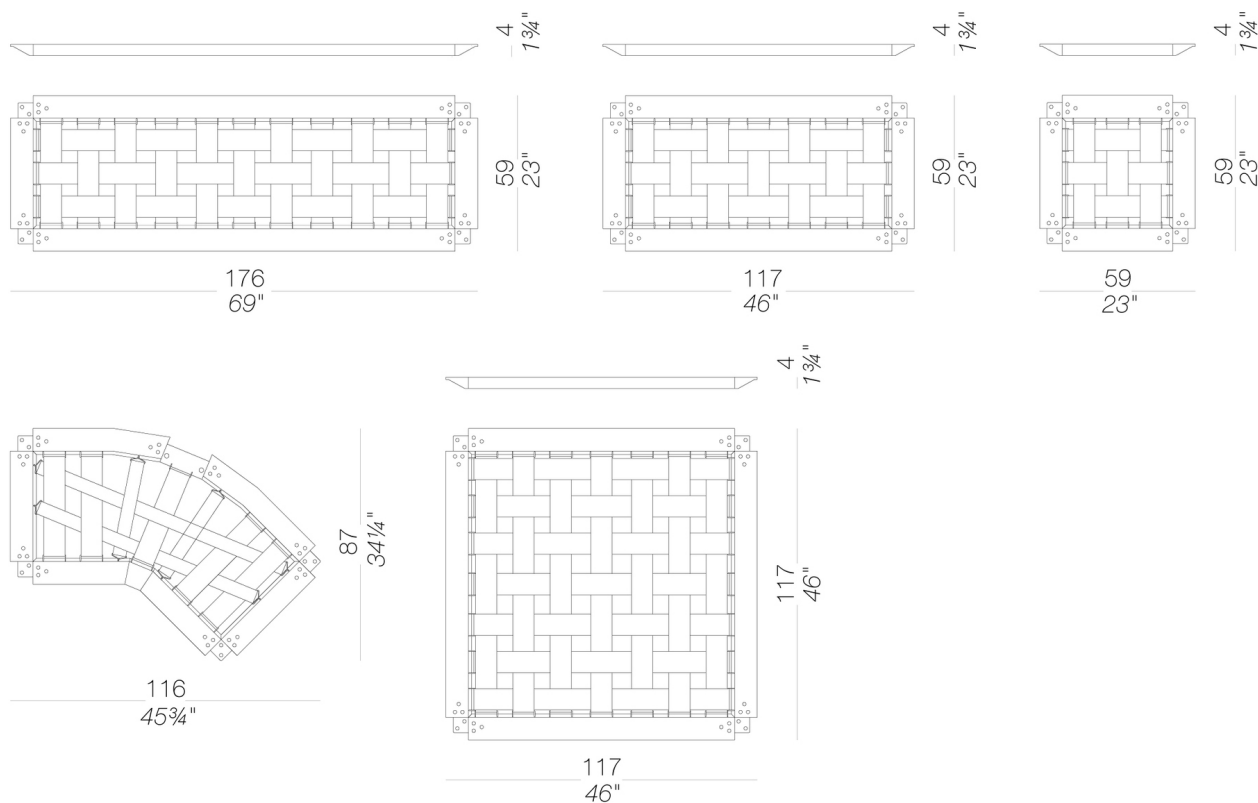
Modular seating system with powder coated aluminium frame with webbed elastic support. Two types of recycled die-cast aluminium legs, one for corners and another to connect frames for larger configurations. Each leg type is available in two heights. Backrests and accessories can be fixed to the frame in several positions by using existing holes. Cushions and backrests in moulded polyurethane foam with polyester fiber, all fire-retardant, upholstered with removable fabric, soft leather or eco-leather. ADD is complemented by several accessories in HPL Fenix® 10 mm.: tops, trays, magazine racks, box for sockets. All metal parts are powder coated.

TEST EN 1728:2012 AC:2013 6.17 - EN 16139:2013 - L2 extreme
TEST 1 IM - Divina, Remix, Steelcut, Valencia

legs



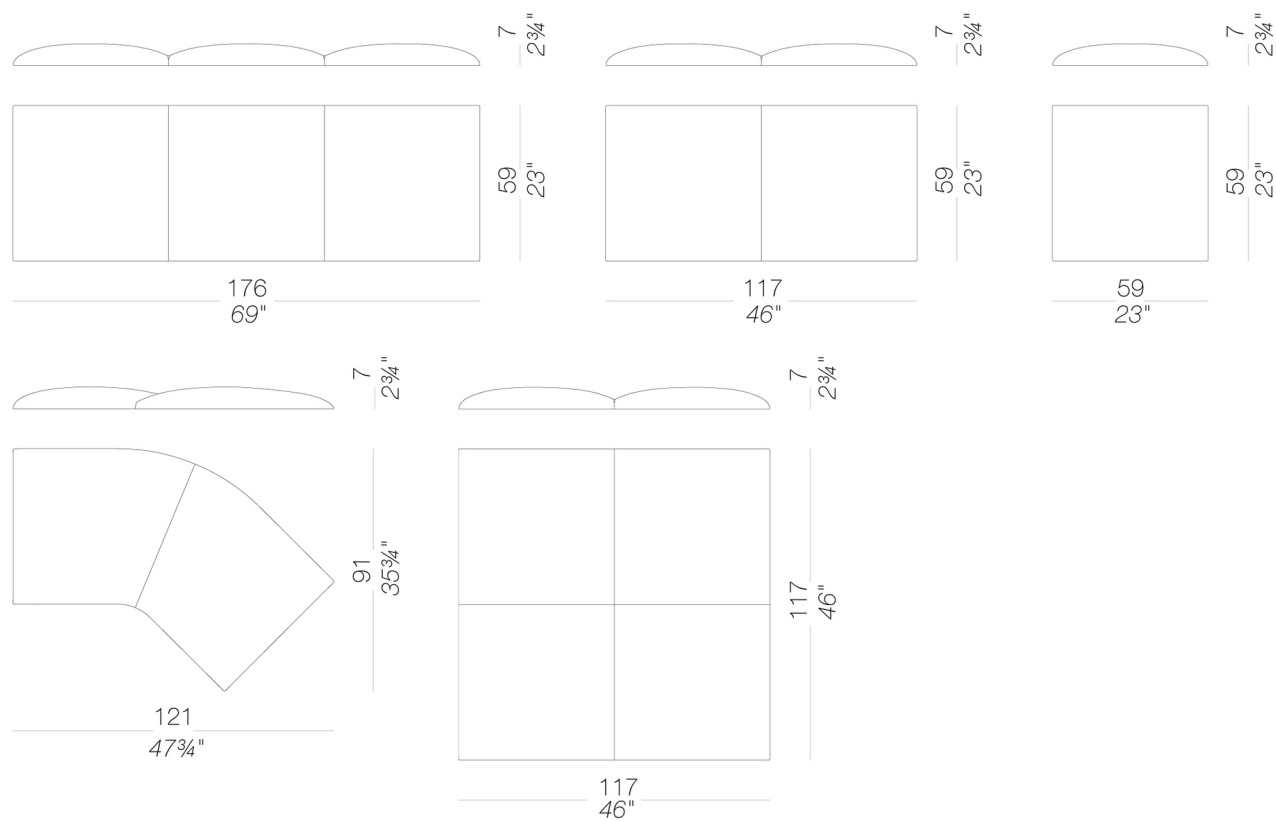
seat frames



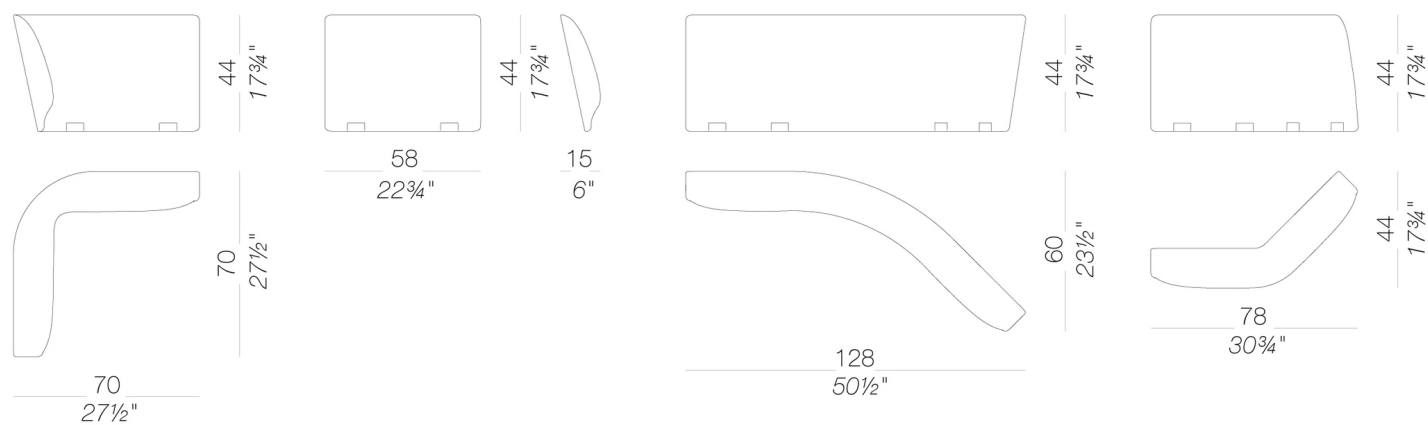
ADD

Francesco Rota | 2014

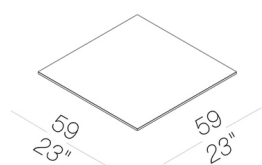
cushions



backs



low table



ADD

Francesco Rota | 2014

accessories

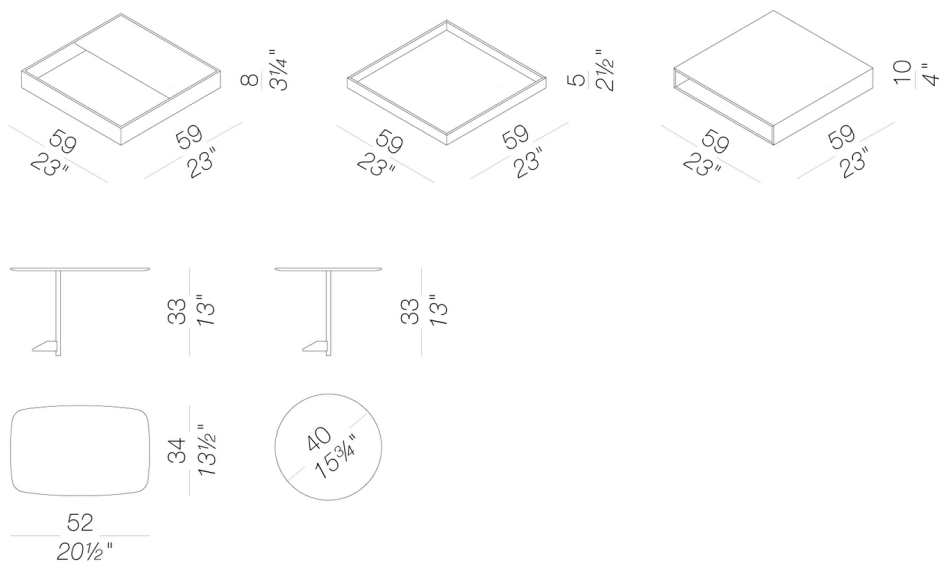


table frames

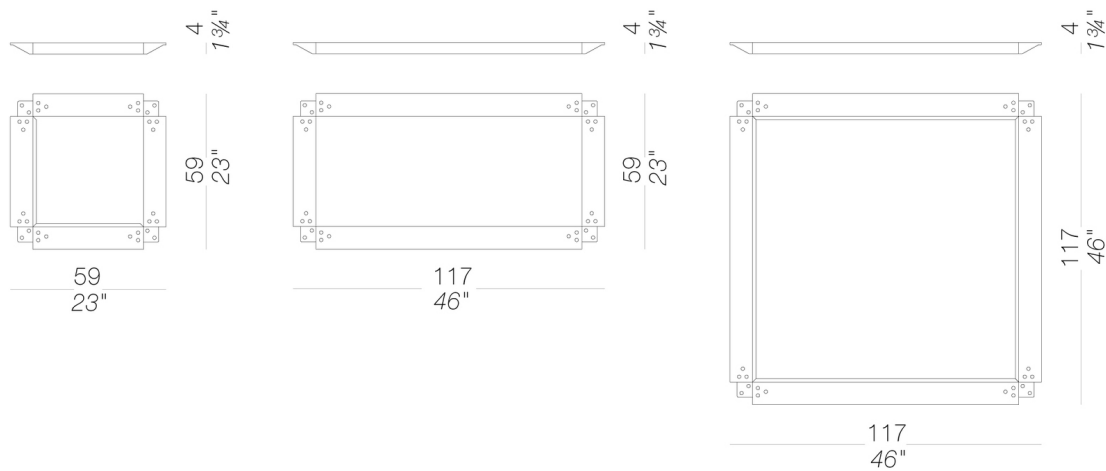
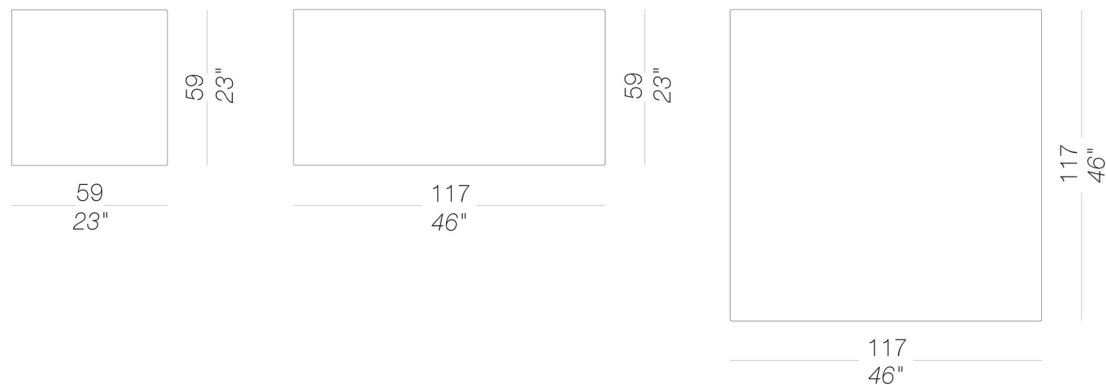


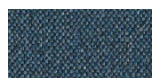
table tops



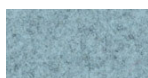
ADD

Francesco Rota | 2014

upholstery



fabric
Main Line Flax -
Grade. B
57 Colors



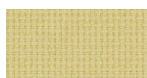
fabric
Blazer - Grade. C
86 Colors



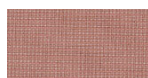
fabric
Chili - Grade. A
47 Colors



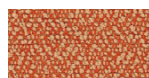
fabric
Umber - Grade. B
36 Colors



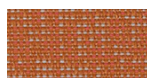
fabric
Nobel - Grade. C
30 Colors



fabric
Naveli - Grade. C
24 Colors



fabric
Fiocco - Grade. B
34 Colors



fabric
Atrium - Grade. C
16 Colors



fabric
Panama - Grade. A
48 Colors



fabric
Sorrento - Grade. B
22 Colors



fabric
Hallingdal 65 - Grade
C
58 Colors



fabric
Canvas 2 - Grade C
45 Colors



fabric
Steelcut Trio 3 -
Grade D
54 Colors



fabric
Remix 3 - Grade C
72 Colors



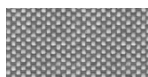
fabric
Divina MD - Grade D
27 Colors



fabric
Divina Melange 3 -
Grade D
38 Colors



fabric
Medley - Grade A
37 Colors



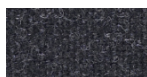
fabric
Maya - Grade A
43 Colors



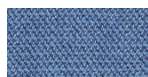
fabric
Jet - Grade A
66 Colors



fabric
Fiord 2 - Grade C
39 Colors



fabric
Tonica 2 - Grade C
39 Colors



fabric
Capture - Grade B
43 Colors



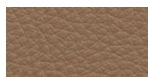
fabric
Crisp - Grade B
40 Colors



fabric
Illris - Grade B
24 Colors



fabric
Steelcut 3 - Grade D
40 Colors



soft-leather
Soft-leather
17 Colors



ecoleather
Valencia - Grade B
72 Colors



fabric
Grain - Grade. B
50 Colors

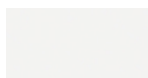


fabric
Re-wool - Grade C
21 Colors

frame

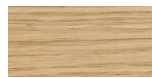


powder coating
black
1 Colors

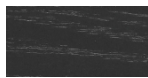


powder coating
white
1 Colors

top



wood
blanch oak
1 Colors



wood
black open pore
1 Colors



HPL 10 mm
HPL fenix
2 Colors

accessories



HPL 10 mm
HPL fenix
2 Colors

consult the portfolio for the range of colors, fabrics, eco-leather, soft-leather.

use and maintenance instructions

Clean all parts in wood, leather, fabric and metal with a damp cloth or a diluted neutral cleaner. Do not use cleaners with alcohol, bleach, solvent or abrasive products. Any liquid spilt on the product must be wiped up immediately. When lifting or moving the product, hold it on the structure and not under the seat. The product should not be subjected to unbalanced weights, as it is designed for a proper rest on the foothold (on four legs or on the base). Our company relieves from any responsibility in case of

damage caused to fragile floors. Avoid any improper use of the product: do not step on the product, on the footrest or on the armrests. Avoid any movements that could compromise the proper functionality of the product or the safety of the users. Wood and leather, being natural materials, could be easily damaged. Small impurities or imperfections are within quality standard range. Do not expose the product to weather conditions or atmospheric agents, nor to heat sources over 40°C. Also products for outdoor use could be afflicted by atmospheric agents. The product could undergo possible exterior changes due to particular exposure to heat, humidity and saltiness. An appropriate and frequent maintenance and cleaning of the product enhances its durability. The product could change colour and shade, if exposed to direct sunlight. Maintenance has to be carried out by experienced staff. Dispose of the package only after assembling the product, in order to avoid the loss of ironmongery and components. Once the product has been dismantled, the product itself or its components must be given to the public garbage disposal system, according to the legislation in force.