

# APTA

Romano Marcato | 2012



# APTA

**Romano Marcato** | 2012

A play of contrasts provides great balance, leaving the sturdy base units and the light top, raised slightly above the frame, to communicate. This is the stylistic hallmark of the APTA table, a tribute to the dimensions of a perfect combination. A play of contrasts, experienced with great balance, allowing the solidity of the painted metal bases and the lightness of the top to dialogue. The structure is available in white fenix, black fenix, oak wood or open pore black. This is the stylistic feature of the APTA table, a tribute to the proportions of a perfect combination. Ideal in any context, from the office to the home.

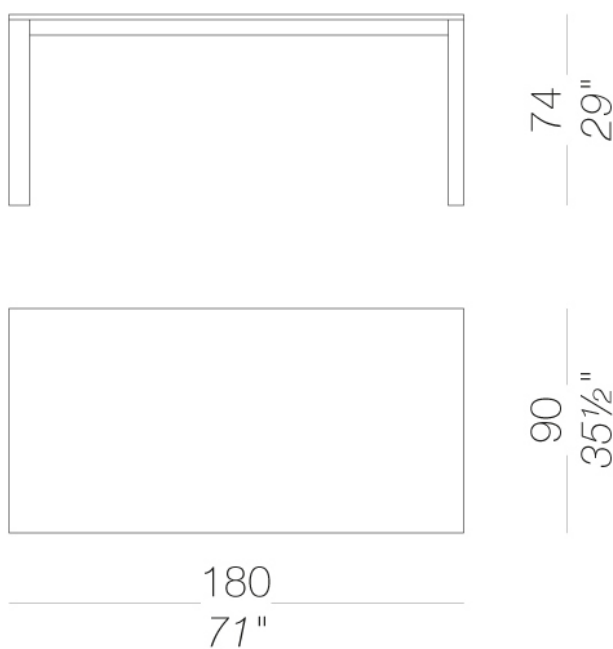


# APTA

Romano Marcato | 2012

## | P133 modern rectangular table 180x90 H74

Table with frame in aluminium extrusion powder coated. Top in HPL Fenix® 10 mm. or wood 16 mm. Feet in polythene.

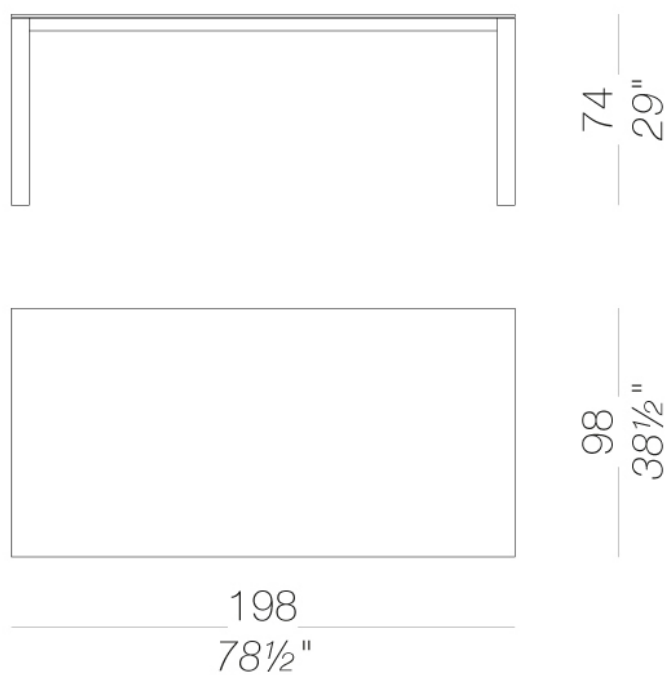


# APTA

Romano Marcato | 2012

## | P134 modern rectangular table 198x98 H74

Table with frame in aluminium extrusion powder coated. Top in HPL Fenix® 10 mm. or wood 16 mm. Feet in polythene.



# APTA

Romano Marcato | 2012

## | P135 modern rectangular table 240x110 H74

Table with frame in aluminium extrusion powder coated. Top in HPL Fenix® 10 mm. or wood 16 mm. Feet in polythene.



# APTA

Romano Marcato | 2012

## | P140 modern rectangular table 298x110 H74

Table with frame in aluminium extrusion powder coated. Top in HPL Fenix® 10 mm. or wood 16 mm. Feet in polythene.



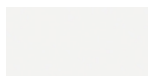
# APTA

Romano Marcato | 2012

## frame



powder coating  
black  
1 Colors

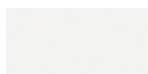


powder coating  
white  
1 Colors

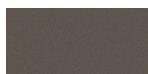
## top



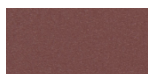
HPL 10 mm  
black HPL fenix  
1 Colors



HPL 10 mm  
white HPL fenix  
1 Colors



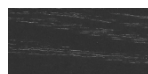
HPL 10 mm  
HPL fenix grigio  
Londra  
1 Colors



HPL 10 mm  
HPL fenix rosso  
Jaipur  
1 Colors



wood  
blached oak  
1 Colors



wood  
black open pore  
1 Colors

**consult the portfolio for the range of colors, fabrics, eco-leather, soft-leather.**

## use and maintenance instructions

Clean all parts in wood, leather, fabric and metal with a damp cloth or a diluted neutral cleaner. Do not use cleaners with alcohol, bleach, solvent or abrasive products. Any liquid spilt on the product must be wiped up immediately. When lifting or moving the product, hold it on the structure and not under the seat. The product should not be subjected to unbalanced weights, as it is designed for a proper rest on the foothold (on four legs or on the base). Our company relieves from any responsibility in case of damage caused to fragile floors. Avoid any improper use of the product: do not step on the product, on the footrest or on the armrests. Avoid any movements that could compromise the proper functionality of the product or the safety of the users. Wood and leather, being natural materials, could be easily damaged. Small impurities or imperfections are within quality standard range. Do not expose the product to weather conditions or atmospheric agents, nor to heat sources over 40°C. Also products for outdoor use could be afflicted by atmospheric agents. The product could undergo possible exterior changes due to particular exposure to heat, humidity and saltiness. An appropriate and frequent maintenance and cleaning of the product enhances its durability. The product could change colour and shade, if exposed to direct sunlight. Maintenance has to be carried out by experienced staff. Dispose of the package only after assembling the product, in order to avoid the loss of ironmongery and components. Once the product has been dismantled, the product itself or its components must be given to the public garbage disposal system, according to the legislation in force.