

# KISAT

Hee Welling | 2022



# KISAT

Hee Welling | 2022

Simple, like walking into school in the morning and seeing it there waiting for us, together with our classmates. Clean, like the fresh air that surprises us in the kitchen on a day in spring. And joyful, like getting together on a Sunday, around a table at a restaurant. KISAT, the new chair designed by Hee Welling, focuses on a familiar aesthetic look and the natural versatility of a design project created to meet the most diverse needs in the contract and residential sectors. This product with emotional appeal amazes with its unexpected graphic detail: the die-cast aluminium frame surrounds the back and then descends, like a continuous line, to become the base. Available in various colours, combined with an oak wood or upholstered fabric back and seat, it creates an interesting yet subtle visual effect. Stackable, functional, comfortable and always different, KISAT is ideal for furnishing public spaces such as canteens, conference halls, restaurants or coffee bars in company buildings. But also in the kitchen, and wherever we are together, now as in the past.

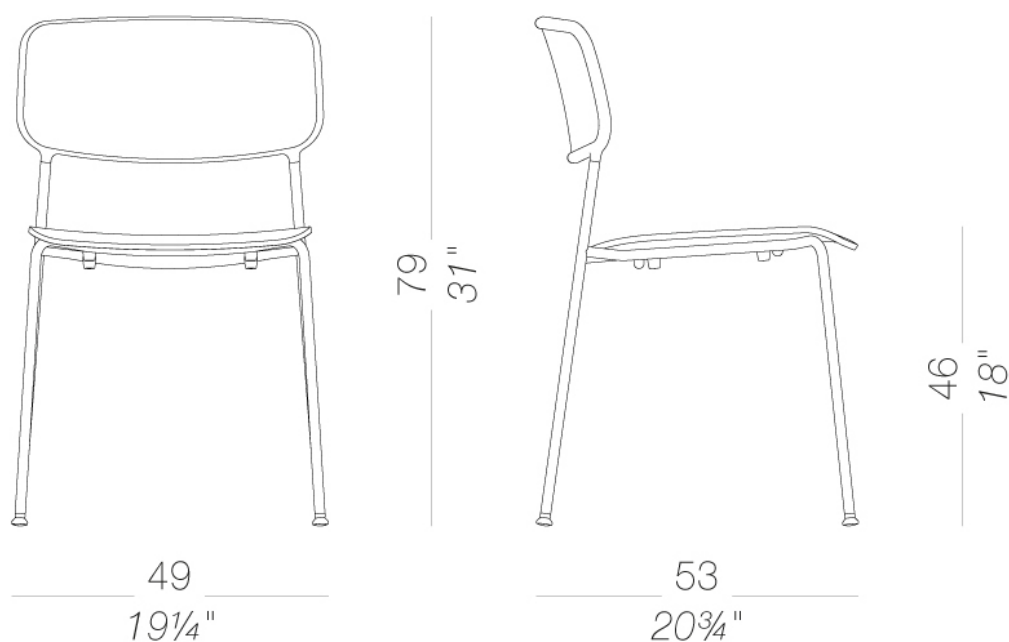


# KISAT

Hee Welling | 2022

## | S412 4 legs stackable

Stackable chair with 4 legs in powder coated steel. Upholstered in seat and backrest in plywood in several finishes. The backrest has a diecast aluminium frame powder coated. 4 legs stackable Feet in nylon with felt.

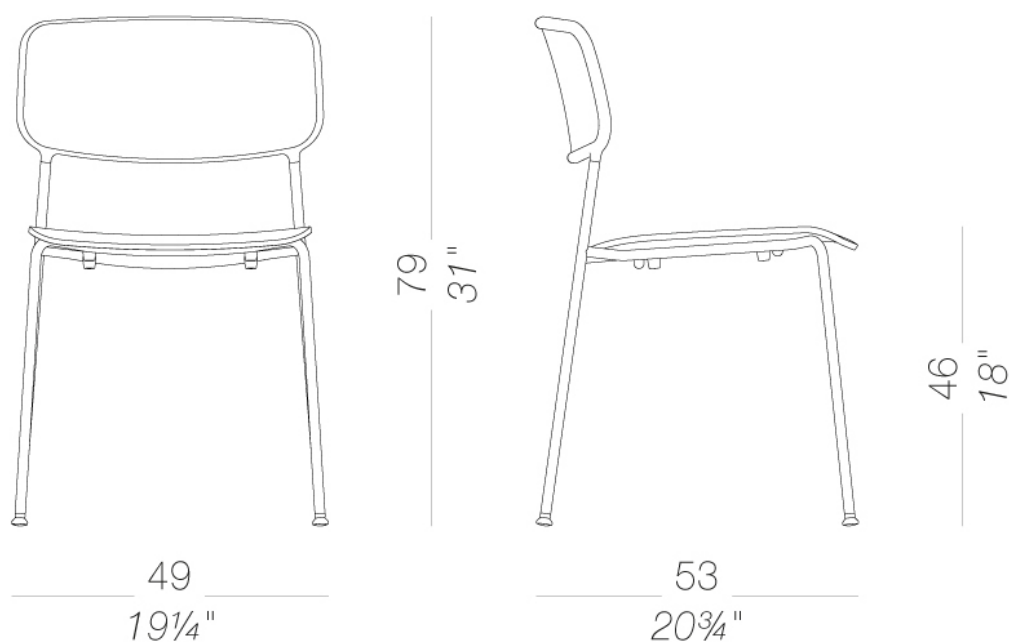


# KISAT

Hee Welling | 2022

## | S410 4 legs stackable

Stackable chair with 4 legs in powder coated steel. Seat and backrest in plywood in several finishes or upholstered in fabric. The backrest has a diecast aluminium frame powder coated. Feet in nylon with felt.



# KISAT

Hee Welling | 2022

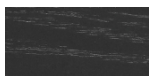
## seat/back



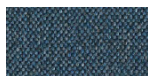
wood  
lacquered open  
pore  
6 Colors



wood  
blanch oak  
1 Colors



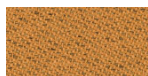
wood  
black open pore  
1 Colors



fabric  
Main Line Flax -  
Grade. B  
57 Colors



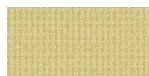
fabric  
Blazer - Grade. C  
86 Colors



fabric  
Chili - Grade. A  
47 Colors



fabric  
Umber - Grade. B  
36 Colors



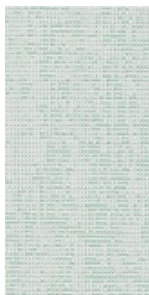
fabric  
Nobel - Grade. C  
30 Colors



fabric  
Naveli - Grade. C  
24 Colors



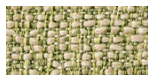
fabric  
Fiocco - Grade. B  
34 Colors



fabric  
Atrium - Grade. C  
16 Colors



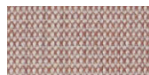
fabric  
Panama - Grade. A  
48 Colors



fabric  
Sorrento - Grade. B  
22 Colors



fabric  
Hallingdal 65 -  
Grade C  
58 Colors



fabric  
Canvas 2 - Grade C  
45 Colors



fabric  
Steelcut Trio 3 -  
Grade D  
54 Colors



fabric  
Remix 3 - Grade C  
72 Colors



fabric  
Fiord 2 - Grade C  
39 Colors



fabric  
Divina MD - Grade D  
Divina Melange 3 -  
Grade D  
38 Colors



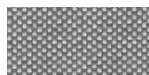
fabric  
Tonica 2 - Grade C  
39 Colors



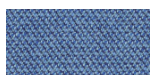
fabric  
Medley - Grade A  
37 Colors



fabric  
Jet - Grade A  
66 Colors



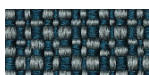
fabric  
Maya - Grade A  
43 Colors



fabric  
Capture - Grade B  
43 Colors



fabric  
Crisp - Grade B  
40 Colors



fabric  
Iliris - Grade B  
24 Colors



fabric  
Steelcut 3 - Grade D  
40 Colors



ecoleather  
Valencia - Grade B  
66 Colors



fabric  
Grain - Grade. B  
50 Colors

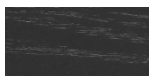


fabric  
Re-wool - Grade C  
21 Colors

## backs



wood  
blanch oak  
1 Colors



wood  
black open pore  
1 Colors

# KISAT

Hee Welling | 2022

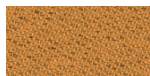
## seat



fabric  
Main Line Flax -  
Grade. B  
57 Colors



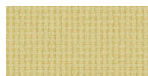
fabric  
Blazer - Grade. C  
86 Colors



fabric  
Chili - Grade. A  
47 Colors



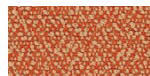
fabric  
Umber - Grade. B  
36 Colors



fabric  
Nobel - Grade. C  
30 Colors



fabric  
Naveli - Grade. C  
24 Colors



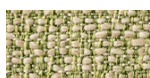
fabric  
Fiocco - Grade. B  
34 Colors



fabric  
Atrium - Grade. C  
16 Colors



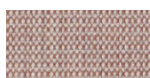
fabric  
Panama - Grade. A  
48 Colors



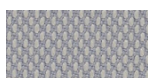
fabric  
Sorrento - Grade. B  
22 Colors



fabric  
Hallingdal 65 -  
Grade C  
58 Colors



fabric  
Canvas 2 - Grade C  
45 Colors



fabric  
Steelcut Trio 3 -  
Grade D  
54 Colors



fabric  
Remix 3 - Grade C  
72 Colors



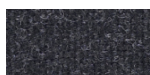
fabric  
Fiord 2 - Grade C  
39 Colors



fabric  
Divina MD - Grade D  
27 Colors



fabric  
Divina Melange 3 -  
Grade D  
38 Colors



fabric  
Tonica 2 - Grade C  
39 Colors



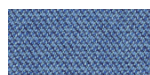
fabric  
Medley - Grade A  
37 Colors



fabric  
Jet - Grade A  
66 Colors



fabric  
Maya - Grade A  
43 Colors



fabric  
Capture - Grade B  
43 Colors



fabric  
Crisp - Grade B  
40 Colors



fabric  
Illris - Grade B  
24 Colors



fabric  
Steelcut 3 - Grade D  
40 Colors



ecoleather  
Valencia - Grade B  
66 Colors



fabric  
Grain - Grade. B  
50 Colors



fabric  
Re-wool - Grade C  
21 Colors



powder coating  
perla  
1 Colors



powder coating  
celeste  
1 Colors



powder coating  
mattone  
1 Colors



powder coating  
oliva  
1 Colors

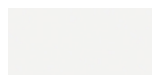


powder coating  
tortora  
1 Colors



powder coating  
pistacchio  
1 Colors

## frame



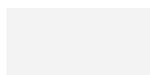
powder coating  
white  
1 Colors



powder coating  
pistacchio  
1 Colors



powder coating  
black  
1 Colors



powder coating  
white  
1 Colors



powder coating  
perla  
1 Colors



powder coating  
celeste  
1 Colors



powder coating  
mattone  
1 Colors



powder coating  
oliva  
1 Colors



powder coating  
tortora  
1 Colors

consult the portfolio for the range of colors, fabrics, eco-leather, soft-leather.

## use and maintenance instructions

Clean all parts in wood, leather, fabric and metal with a damp cloth or a diluted neutral cleaner. Do not use cleaners with alcohol, bleach,

solvent or abrasive products. Any liquid spilt on the product must be wiped up immediately. When lifting or moving the product, hold it on the structure and not under the seat. The product should not be subjected to unbalanced weights, as it is designed for a proper rest on the foothold (on four legs or on the base). Our company relieves from any responsibility in case of damage caused to fragile floors. Avoid any improper use of the product: do not step on the product, on the footrest or on the armrests. Avoid any movements that could compromise the proper functionality of the product or the safety of the users. Wood and leather, being natural materials, could be easily damaged. Small impurities or imperfections are within quality standard range. Do not expose the product to weather conditions or atmospheric agents, nor to heat sources over 40°C. Also products for outdoor use could be afflicted by atmospheric agents. The product could undergo possible exterior changes due to particular exposure to heat, humidity and saltiness. An appropriate and frequent maintenance and cleaning of the product enhances its durability. The product could change colour and shade, if exposed to direct sunlight. Maintenance has to be carried out by experienced staff. Dispose of the package only after assembling the product, in order to avoid the loss of ironmongery and components. Once the product has been dismantled, the product itself or its components must be given to the public garbage disposal system, according to the legislation in force.