

# PASS

Hee Welling | 2012



# PASS

Hee Welling | 2012

Like waves on a calm day, they rise, gently fall and extend as far as the sand, infinitely. PASS armchairs are inspired by these lines, expressing the continuous rhythm of the sea in their profile. The design is fluid and embracing. The wide base adds lightness and comfort to the seat. Pass is ideal for the office or the home, and for those waiting in an airport lounge, dreaming of departing.



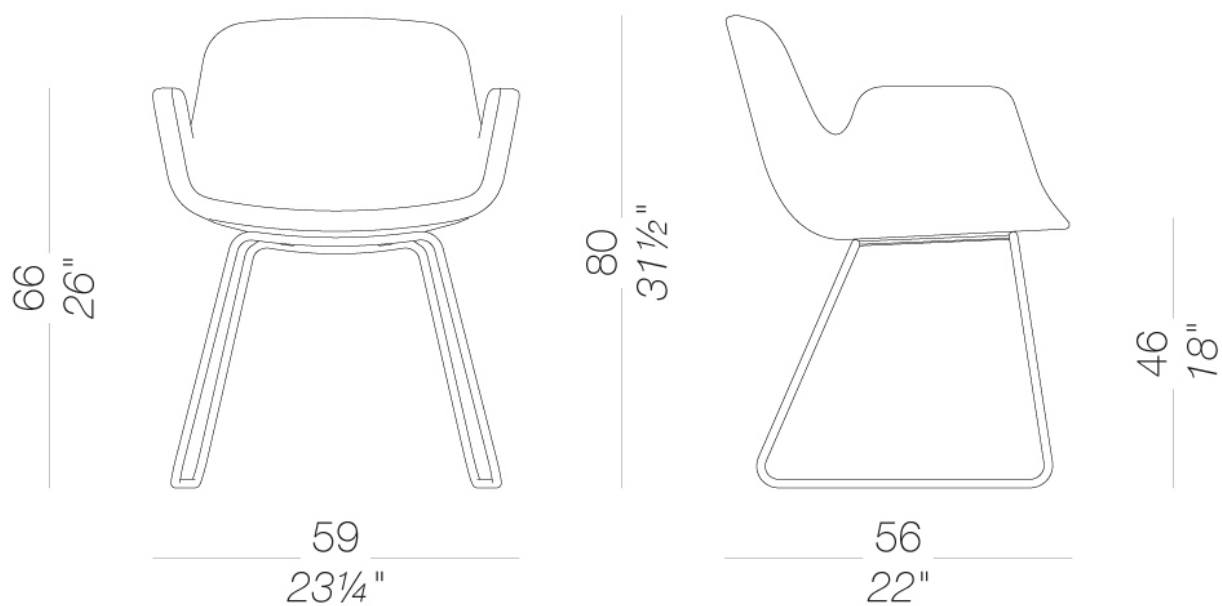
# PASS

Hee Welling | 2012

## | S130 Upholstered with slide-frame base

Chair with sled base in mat chromed steel or powder coated. Shell with internal metal frame upholstered with fire resistant moulded foam and covered with fabric, ecoleather or leather, also two-tone. Glides in polythene

TEST 1 IM - Divina, Grimm, Hallingdal, Maya, Remix





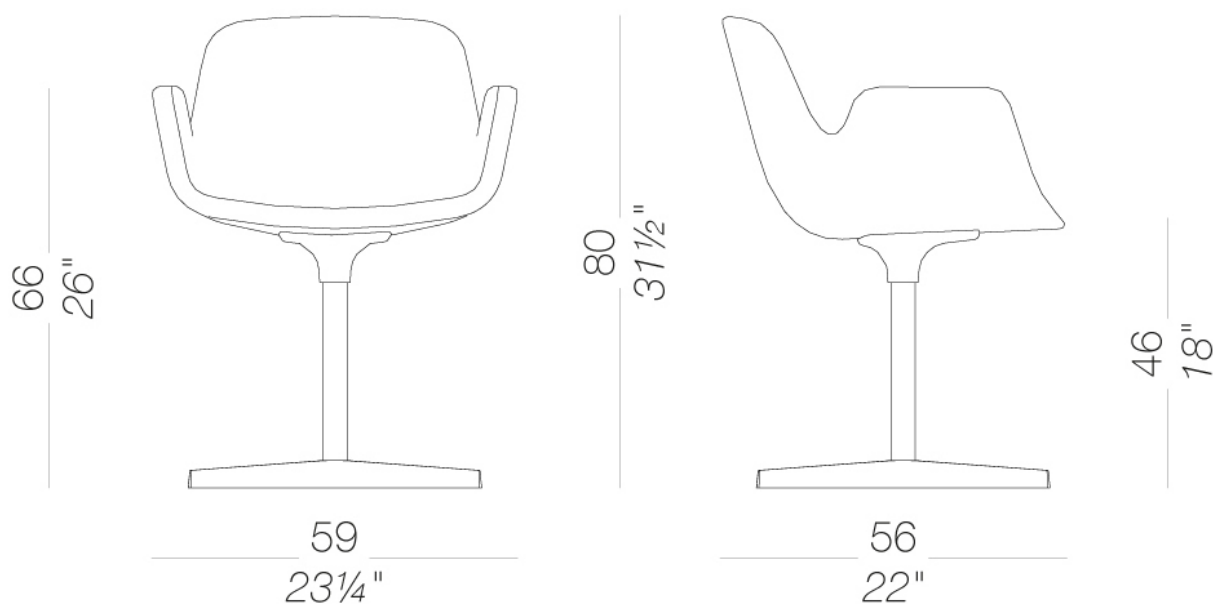
# PASS

Hee Welling | 2012

## | S131 Star-shaped swivel base

Chair with star swivel base in sandblasted aluminium or powder coated. Shell with internal metal frame upholstered with fire resistant moulded foam and covered with fabric, ecoleather or leather, also two-tone. Glides in polythene.

TEST EN 1728:2000 6.7 - EN 15373:2007 - L3 severe  
TEST 1 IM - Divina, Grimm, Hallingdal, Maya, Remix



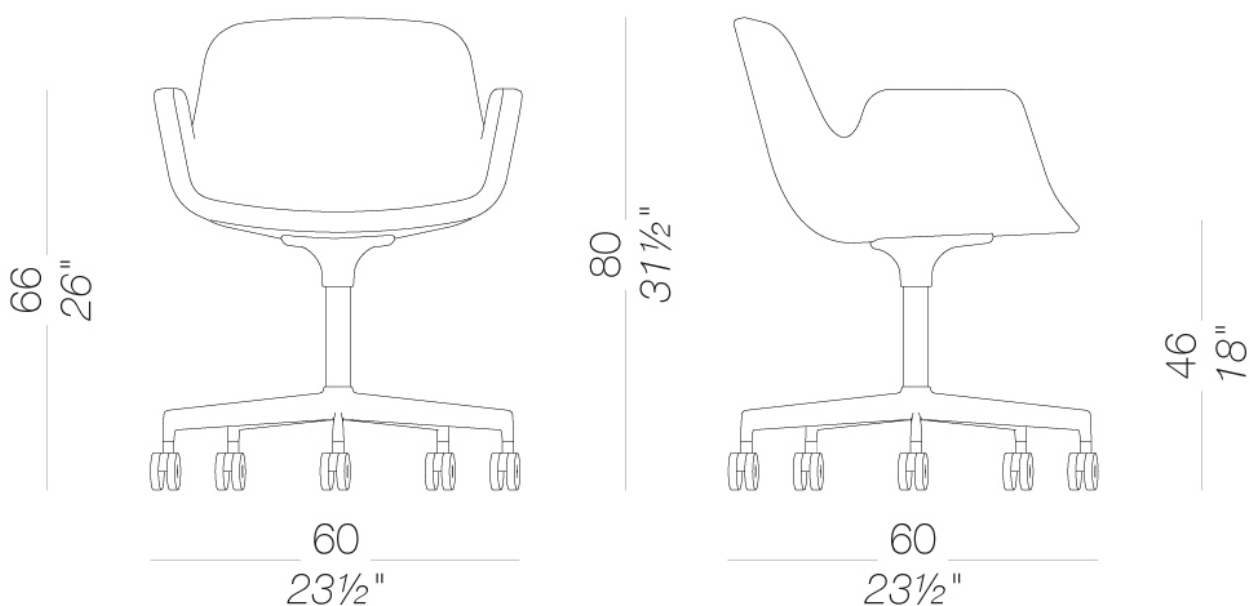
# PASS

Hee Welling | 2012

## | S134 basic armchair on wheels

Chair with 5 star swivel base in sandblasted aluminium or powder coated and self-braking castors. Shell with internal metal frame upholstered with fire resistant moulded foam and covered with fabric, ecoleather or leather, also two-tone.

TEST EN 1728:2012 AC:2013 6.17 - EN 16139:2013 - L2 extreme  
TEST 1 IM - Divina, Grimm, Hallingdal, Maya, Remix



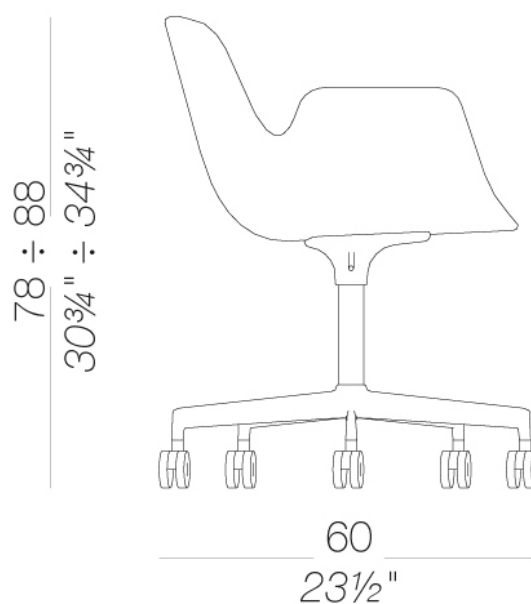
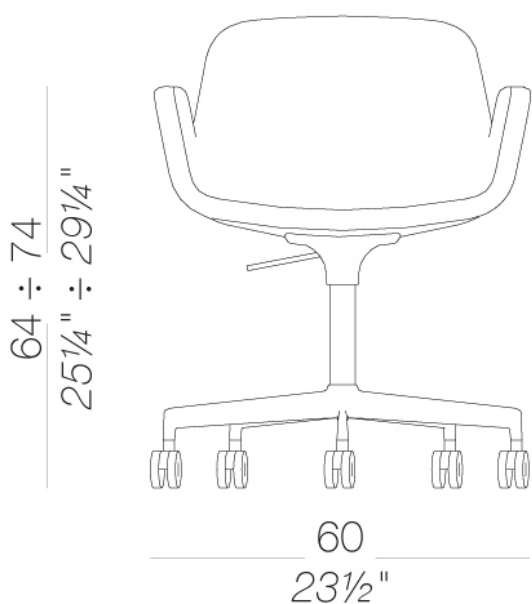
# PASS

Hee Welling | 2012

## | S135 Upholstered and height-adjustable

Height adjustable chair with 5 star swivel base in sandblasted aluminium or powder coated and self-braking castors. Shell with internal metal frame upholstered with fire resistant moulded foam and covered with fabric, ecoleather or leather, also two-tone.

TEST 1 IM - Divina, Grimm, Hallingdal, Maya, Remix



44 ÷ 54  
17 1/4" ÷ 21 1/4"

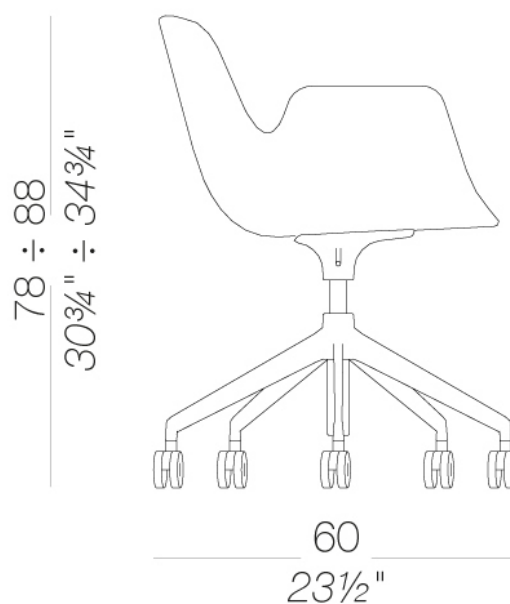
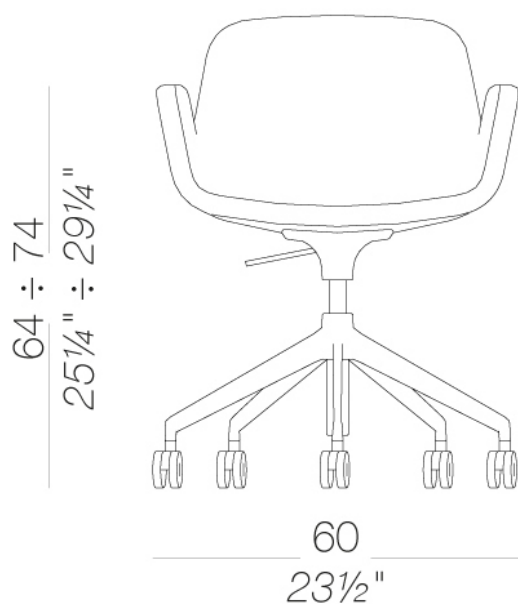
# PASS

Hee Welling | 2012

## | S136 Height-adjustable, pyramidal base, on castors

Height adjustable chair with 5 star swivel base in sandblasted aluminium or powder coated and self-braking castors. Shell with internal metal frame upholstered with fire resistant moulded foam and covered with fabric, ecoleather or leather, also two-tone.

TEST 1 IM - Divina, Grimm, Hallingdal, Maya, Remix



44 ÷ 54  
17 1/4" ÷ 21 1/4"

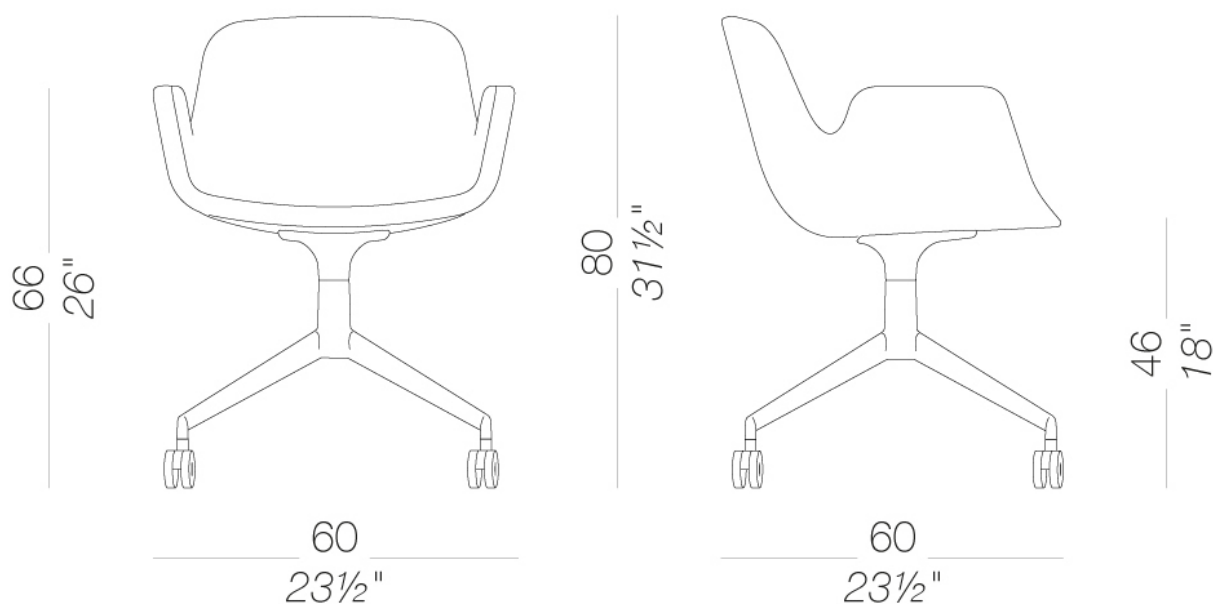
# PASS

Hee Welling | 2012

## | S168 Upholstered armchair, 4-spoke base, on castors

Chair with trestle base in sandblasted aluminium or powder coated and self-braking castors. Shell with internal metal frame upholstered with fire resistant moulded foam and covered with fabric, ecoleather or leather, also two-tone.

TEST 1 IM - Divina, Grimm, Hallingdal, Maya, Remix





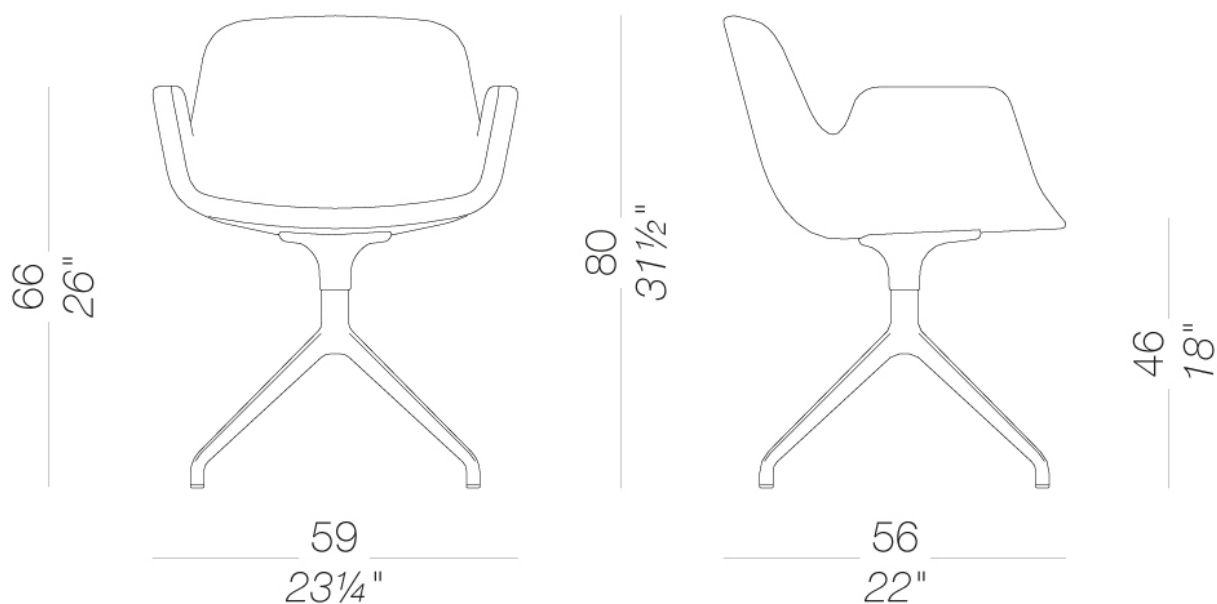
# PASS

Hee Welling | 2012

## | S119 4-spoke base

Chair with trestle swivel base in sandblasted aluminium or powder coated. Shell with internal metal frame upholstered with fire resistant moulded foam and covered with fabric, ecoleather or leather, also two-tone. Glides in polythene.

TEST 1 IM - Divina, Grimm, Hallingdal, Maya, Remix



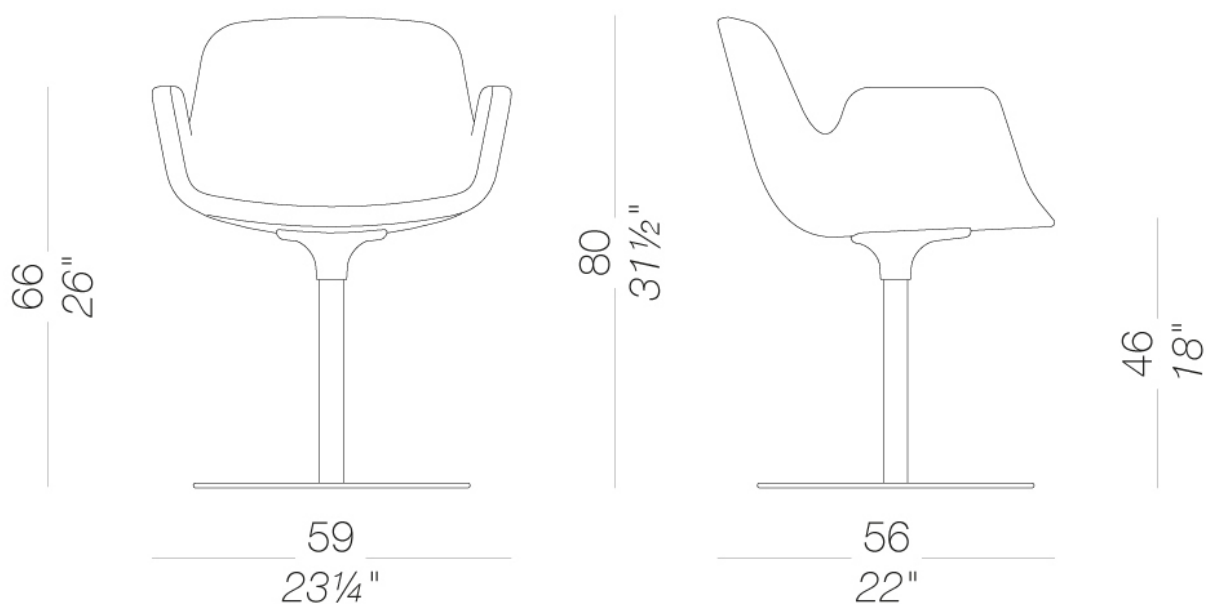
# PASS

Hee Welling | 2012

## | S121 Round swivel base

Swivel chair with round metal base covered by a stainless steel sheet Aisi 304 "linen fiber" pattern or powder coated. Shell with internal metal frame upholstered with fire resistant moulded foam and covered with fabric, ecoleather or leather, also two-tone. Felt under the base.

TEST 1 IM - Divina, Grimm, Hallingdal, Maya, Remix



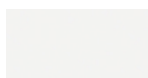
# PASS

Hee Welling | 2012

## frame



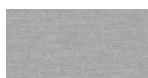
powder coating  
black  
1 Colors



powder coating  
white  
1 Colors



metal  
mat chromed  
1 Colors



metal  
aluminium  
1 Colors



metal  
stainless steel  
1 Colors

## upholstery



fabric  
Hallingdal 65 -  
Grade C  
58 Colors



fabric  
Canvas 2 - Grade C  
45 Colors



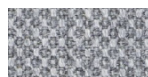
fabric  
Steelcut Trio 3 -  
Grade D  
54 Colors



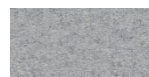
fabric  
Remix 3 - Grade C  
72 Colors



fabric  
Clara 2 - Grade C  
24 Colors



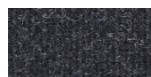
fabric  
Fiord 2 - Grade C  
39 Colors



fabric  
Divina MD - Grade D  
27 Colors



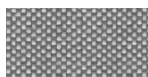
fabric  
Divina Melange 3 -  
Grade D  
38 Colors



fabric  
Tonica 2 - Grade C  
39 Colors



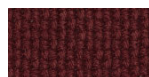
fabric  
Medley - Grade A  
37 Colors



fabric  
Maya - Grade A  
43 Colors



fabric  
Jet - Grade A  
66 Colors



fabric  
Lapalma Smart -  
Grade C  
18 Colors



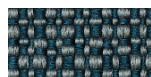
fabric  
Capture - Grade B  
43 Colors



fabric  
Crisp - Grade B  
40 Colors



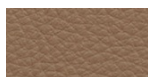
fabric  
Nattè - Grade B  
30 Colors



fabric  
Iris - Grade B  
24 Colors



fabric  
Steelcut 3 - Grade D  
40 Colors



soft-leather  
Soft-leather  
17 Colors



ecoleather  
GRIMM FR - Grade A  
32 Colors



ecoleather  
Valencia - Grade B  
66 Colors



fabric  
Grain - Grade B  
50 Colors



fabric  
Re-wool - Grade C  
21 Colors

**consult the portfolio for the range of colors, fabrics, eco-leather, soft-leather.**

## use and maintenance instructions

Clean all parts in wood, leather, fabric and metal with a damp cloth or a diluted neutral cleaner. Do not use cleaners with alcohol, bleach, solvent or abrasive products. Any liquid spilt on the product must be wiped up immediately. When lifting or moving the product, hold it on the structure and not under the seat. The product should not be subjected to unbalanced weights, as it is designed for a proper rest on the foothold (on four legs or on the base). Our company relieves from any responsibility in case of damage caused to fragile floors. Avoid any improper use of the product: do not step on the product, on the footrest or on the armrests. Avoid any movements that could compromise the proper functionality of the product or the safety of the users. Wood and leather, being natural materials, could be easily damaged. Small impurities or imperfections are within quality standard range. Do not expose the product to weather conditions or atmospheric agents, nor to heat sources over 40°C. Also products for outdoor use could be afflicted by atmospheric agents. The product could undergo possible exterior changes due to particular exposure to heat, humidity and saltiness. An appropriate and frequent maintenance and cleaning of the product enhances its durability. The product could change colour and shade, if exposed to direct sunlight. Maintenance has to be carried out by experienced staff. Dispose of the package only after assembling the product, in order to avoid the loss of ironmongery and components. Once the product has been dismantled, the product itself or its components must be given to the public garbage disposal system, according to the legislation in force.