

WOD

Raffaella Mangiarotti | 2024



WOD

Raffaella Mangiarotti | 2024

Discarding the superfluous to achieve a balance that is the very measure of elegance. This is the challenge won by WOD, the new space divider by Lapalma, designed by Raffaella Mangiarotti.

With its understated yet impressive design and the materials used (wood available in various finishes combined with natural or black hide which ensure sturdiness and flexibility, as a refined detail embellishing the overall effect) this innovative screen represents a very distinct approach towards aesthetics and design.

Being made of a single material it is easy to recycle at the end of its life. Lastly, it can be transported in a sustainable manner, in a flat pack, which lowers emissions and transport costs.

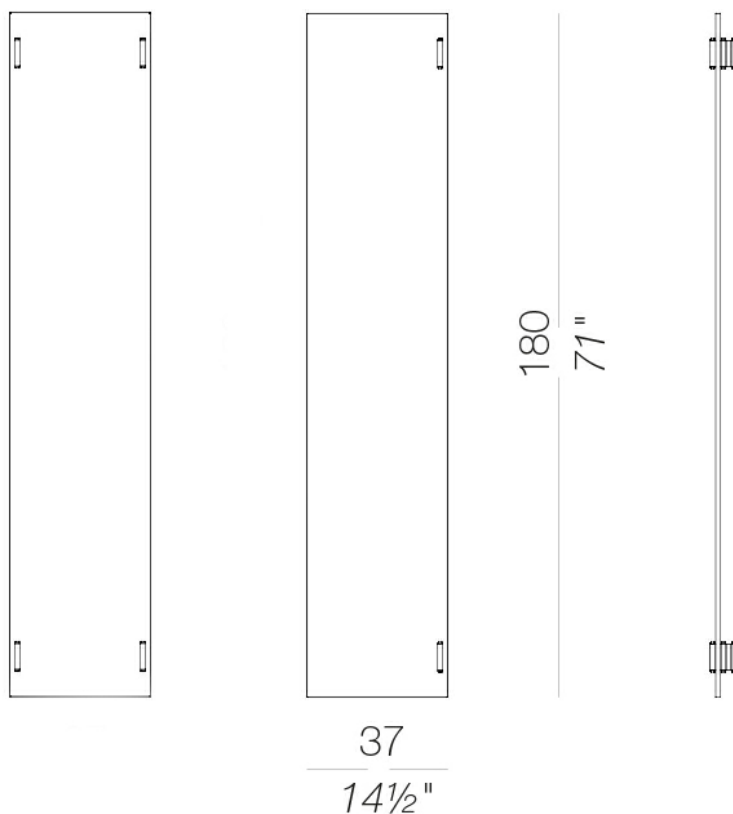


WOD

Raffaella Mangiarotti | 2024

| wooden space divider modular wooden space divider

Modular panel system made of plywood available in various powder-coated or open-pore lacquered finishes in a variety of colours. The joining hinge is made of hide with three slots for inserting turned wooden pins.

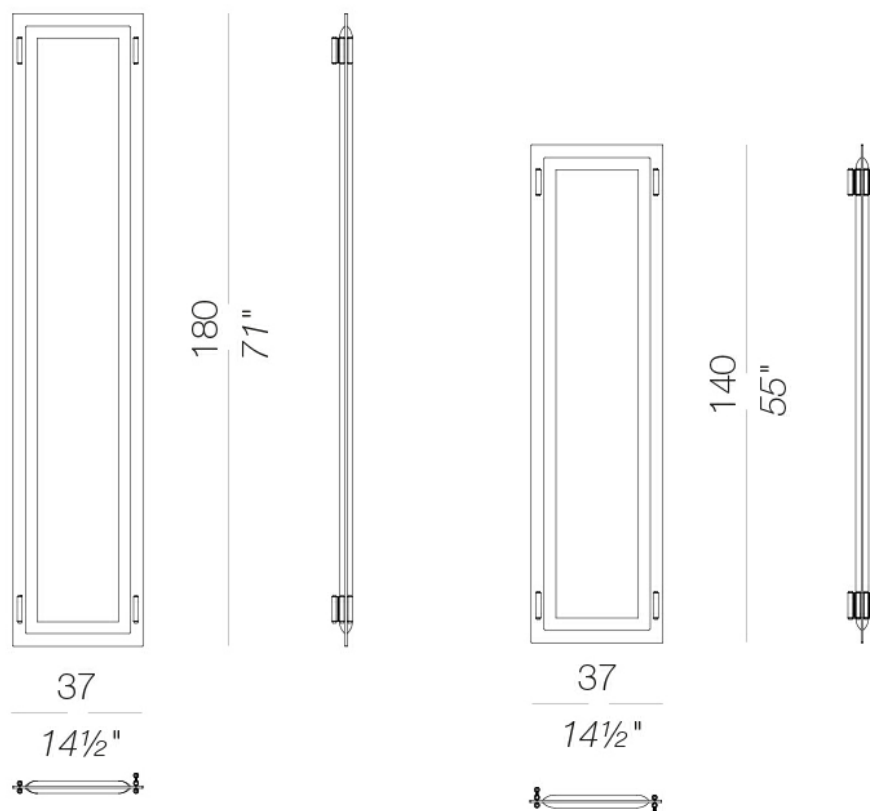


WOD

Raffaella Mangiarotti | 2024

| fabric space divider modular fabric space divider

Panel composed of 44% recycled polyester fibre and the outer fabric polyester Trevira® CS, both fire retardant. The joining hinge is made of leather with two slots for the insertion of turned wooden pins.



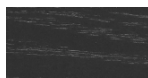
WOD

Raffaella Mangiarotti | 2024

frame



wood
blanch oak
1 Colors



wood
black open pore
1 Colors



wood
natural ash
1 Colors



wood
lacquered open
pore
6 Colors

upholstery



fabric
Jet - Grade A
66 Colors

consult the portfolio for the range of colors, fabrics, eco-leather, soft-leather.

use and maintenance instructions

Clean all parts in wood, leather, fabric and metal with a damp cloth or a diluted neutral cleaner. Do not use cleaners with alcohol, bleach, solvent or abrasive products. Any liquid spilt on the product must be wiped up immediately. When lifting or moving the product, hold it on the structure and not under the seat. The product should not be subjected to unbalanced weights, as it is designed for a proper rest on the foothold (on four legs or on the base). Our company relieves from any responsibility in case of damage caused to fragile floors. Avoid any improper use of the product: do not step on the product, on the footrest or on the armrests. Avoid any movements that could compromise the proper functionality of the product or the safety of the users. Wood and leather, being natural materials, could be easily damaged. Small impurities or imperfections are within quality standard range. Do not expose the product to weather conditions or atmospheric agents, nor to heat sources over 40°C. Also products for outdoor use could be afflicted by atmospheric agents. The product could undergo possible exterior changes due to particular exposure to heat, humidity and saltiness. An appropriate and frequent maintenance and cleaning of the product enhances its durability. The product could change colour and shade, if exposed to direct sunlight. Maintenance has to be carried out by experienced staff. Dispose of the package only after assembling the product, in order to avoid the loss of ironmongery and components. Once the product has been dismantled, the product itself or its components must be given to the public garbage disposal system, according to the legislation in force.