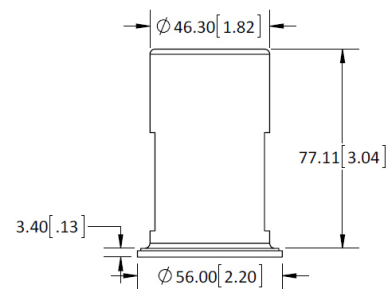
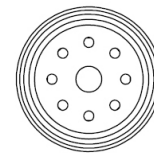


## 864,

- 2.20" diameter die cast metal trim
- Ceiling opening diameter: 1.82"
- Provides precision down light
- Shallow 0.13" profile
- Screw-on trim removes easily for relamping
- Housing with knockouts electrical entry included
- Includes protective frosted glass lens
- Halogen 12V G4 MR11 max. 35W lamp
- 35W halogen lamp included
- Must order **class 2 transformer** separately
- Go to **lamps** for other options



**DIMENSIONS ARE IN MILLIMETERS [INCHES]  
(NOT TO SCALE)**

### Variable Specs

**Note:** Variable spec listed below are dependant on system code selection. [Click here to see specific variations.](#)

- |  |   |
|--|---|
| <input checked="" type="checkbox"/> Black  | <input type="checkbox"/> White              |
| <input checked="" type="checkbox"/> Bronze | <input type="checkbox"/> Silver or Aluminum |

Special Note: \*All fixtures and lighting systems must be used with dedicated circuit and a Prima transformer, driver, and/or ballast to comply with cUL/cETL listing; or all warranties are void.