

Arachne

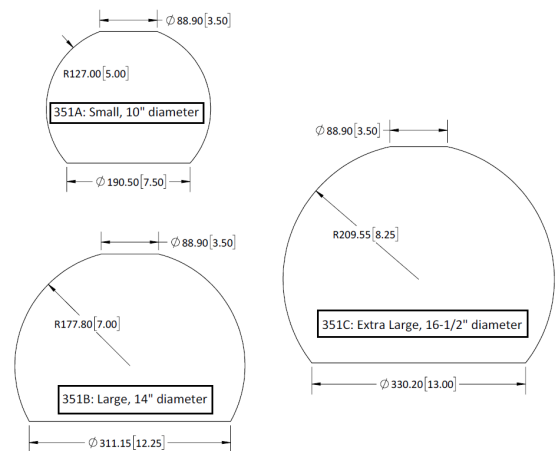
- Single lamp suspended fabric dome shade pendant
- Three sizes available: Small (10" diameter), Large (14" diameter), Extra Large (16.5" diameter)
- Suitable for decorative ambient and downlight applications
- When choosing monpoint P1, P2, P3, P4, or P5, you must order proper transformers or drivers
- Contact our Customer Service for shade color options



Arachne pendant shown with extra-large shade (351C) in Graphite color

Xelogen (00)	<ul style="list-style-type: none"> ▪ 12V G[867 xelogen max. 57W lamp ▪ 57W xelogen lamp included 		
LED	<ul style="list-style-type: none"> ▪ Suitable for 12V AC magnetic or electronic LED transformer ▪ Suitable for 12V DC electronic constant voltage driver 	L2	<ul style="list-style-type: none"> ▪ 12V / 4W / 300lm / 3000K / ELV dimming LED module
		LD	<ul style="list-style-type: none"> ▪ 12V / 9W / 700lm / 3000K / dimmable LED MR16 lamp
LED	<ul style="list-style-type: none"> ▪ Uses 120V or 277V input constant current LED driver 	LD	<ul style="list-style-type: none"> ▪ 120V or 277V / 9W / 850lm / dimmable LED module ▪ 2700K/3000K/3500K/ 4000K 90 CRI options available
LED	<ul style="list-style-type: none"> ▪ 120V line voltage E26 socket 	HD	<ul style="list-style-type: none"> ▪ LED Edison-style bulbs available, ELV dimmable

Available Lumen Styles



DIMENSIONS ARE IN MILLIMETERS [INCHES]
(NOT TO SCALE)
(DIMENSIONS ARE APPROXIMATE AND WILL VARY SLIGHTLY)

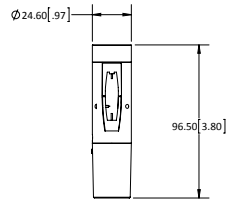
Variable Specs

Note: Variable spec listed below are dependant on system code selection.

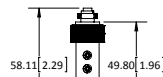
- ☒ Black
- ☒ Polished Chrome
- ☐ White
- ☒ Bronze
- ☒ Silver or Aluminum
- ☒ Champagne (Matted Gold)

Special Note: *All fixtures and lighting systems must be used with dedicated circuit and a Prima transformer, driver, and/or ballast to comply with cUL/cETL listing; or all warranties are void.

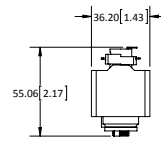
SYSTEM CODE:	LUMEN STYLES:	FINISH COLORS:
(10) 120V ADAPTER FOR P-TRACK FIXTURE	Not Available	Not Available
(20) FIT SYSTEM	00/L2/LD	BK/SV
(25) 120V RETRO-FIT ADAPTER FOR H-TRACK FIXTURE	Not Available	Not Available
(26) 120V RETRO-FIT ADAPTER FOR J-TRACK FIXTURE	Not Available	Not Available
(27) H-TRACK RETRO FIT ADAPTER	Not Available	BK/SV/WH
(28) J-TRACK RETRO FIT ADAPTER	Not Available	BK/SV/WH
(29) HOUSING ADAPTER FOR P-TRACK	00/L2/LD	BK/SV/WH
(40) LOW VOLTAGE MONORAIL SYSTEM	00/L2/LD	BK/BZ/CP/PC/SV
(42) CABLE SYSTEM – 6" WIDTH	00/L2/LD	BK/PC/SV
(43) CABLE SYSTEM – 2.75" WIDTH	00/L2/LD	BK/PC/SV
(E1) MONOPOINT 5" CANOPY W/ 120V TO 12V TRANSFORMER	00	BK/BZ/CP/PC/SV/WH
(E2) MONOPOINT 5" CANOPY W/ 277V TO 12V TRANSFORMER	00	BK/BZ/CP/PC/SV/WH
(E3) MONOPOINT 5" CANOPY W/ 120V BALLAST OR LED 120V/12V TRANSFORMER	L2/LD	BK/BZ/CP/PC/SV/WH
(E4) MONOPOINT 5" CANOPY W/ 277V BALLAST OR LED 277V/12V TRANSFORMER	L2/LD	BK/BZ/CP/PC/SV/WH
(E5) MONOPOINT 5.5" CANOPY W/ DIMMABLE 120V~277V BALLAST	Not Available	BK/BZ/CP/PC/SV/WH
(E6) MONOPOINT 5.5" CANOPY W/ CONSTANT CURRENT DRIVER	LD	BK/BZ/CP/PC/SV/WH
(M1-M7) MULTIPOINT	(CONSULT FACTORY)	(CONSULT FACTORY)
(P1) MONOPOINT DIA. 0.7" W/ THREADED NIPPLE MOUNTING	00/L2/LD/LD	BK/BZ/CP/PC/SV/WH
(P2) MONOPOINT DIA. 1.6" W/ THREADED NIPPLE MOUNTING	00/L2/LD/LD	BK/BZ/CP/PC/SV/WH
(P3) MONOPOINT DIA. 1.6" W/ SCREW/ANCHOR MOUNTING	00/L2/LD/LD	BK/BZ/CP/PC/SV/WH
(P4) MONOPOINT 5" DIRECT MOUNT SQUARE COVER PLATE	00/L2/LD/LD/HD	BK/BZ/CP/PC/SV/WH
(P5) MONOPOINT 5" JBOX PLATE	00/L2/LD/LD/HD	BK/BZ/CP/PC/SV/WH



(10) 120V ADAPTER FOR P-TRACK FIXTURE

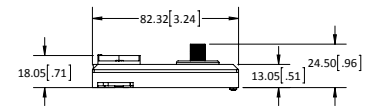


(20) FIT SYSTEM

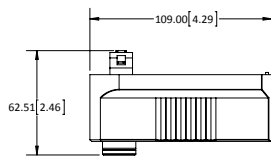


(25) 120V RETRO-FIT ADAPTER FOR H-TRACK FIXTURE

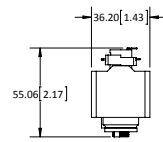
NOTE: DIMENSIONS ARE IN MILLIMETERS [INCHES]



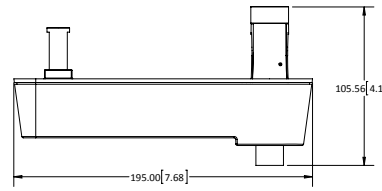
(26) 120V RETRO-FIT ADAPTER FOR J-TRACK FIXTURE



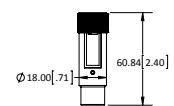
(27) H-TRACK ADAPTER



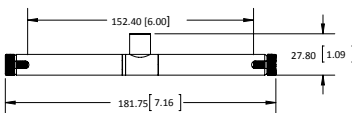
(28) J-TRACK ADAPTER



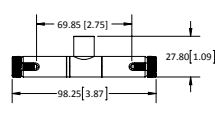
(29) HOUSING ADAPTER FOR P-TRACK



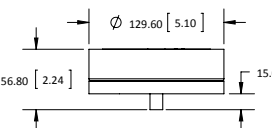
(40) LOW VOLTAGE MONORAIL SYSTEM



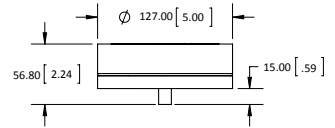
(42) CABLE SYSTEM - 6.00" WIDTH



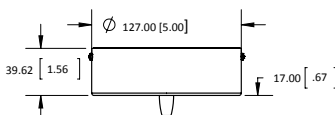
(43) CABLE SYSTEM - 2.75" WIDTH



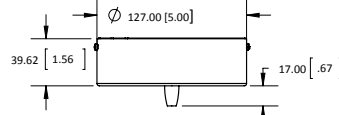
(E1) MONOPOINT 5" CANOPY W/ 120V TO 12V TRANSFORMER



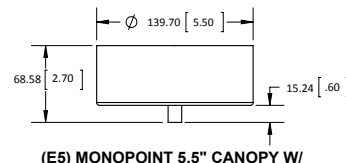
(E2) MONOPOINT 5" CANOPY W/ 277V TO 12V TRANSFORMER



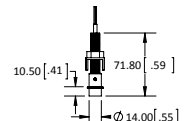
(E3) MONOPOINT 5" CANOPY W/ 120V BALLAST OR LED 120V/12V TRANSFORMER



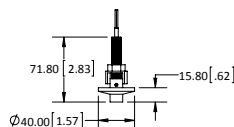
(E4) MONOPOINT 5" CANOPY W/ 277V BALLAST OR LED 277V/12V TRANSFORMER



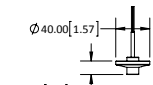
(E5) MONOPOINT 5.5" CANOPY W/ DIMMABLE 120V~277V BALLAST
(E6) MONOPOINT 5.5" CANOPY W/ CONSTANT CURRENT DRIVER



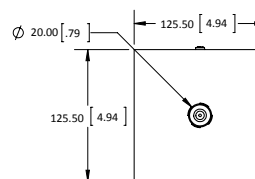
(P1) MONOPOINT DIA. 0.7" W/ THREADED NIPPLE MOUNTING



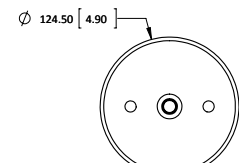
(P2) MONOPOINT DIA. 1.6" W/ THREADED NIPPLE MOUNTING



(P3) MONOPOINT DIA. 1.6" W/ SCREW/ANCHOR MOUNTING



(P4) 5" DIRECT MOUNT SQUARE COVER PLATE



(P5) MONOPOINT 5" JBOX PLATE