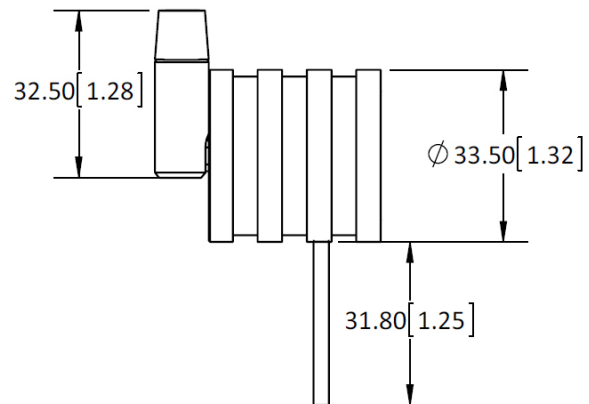


## Bullseye I

- Single lamp adjustable miniature track head
- Adjustable 355 degree x 90 degree
- Solid brass hardware with powder coat or metal plated finish
- Suitable for task and display lighting applications
- Photo shown is 1708-SV with Monorail adapter, 3" extension, Accessory Holder with Perforated Back catalog no. **90-HPB16-SV** (sold separately) and Hexagonal Louver catalog no. **90-HL16-BK** (sold separately)
- Go to [lamps](#) for other options
- Go to [accessories](#) for other options
- When choosing monopoint P1, P2, P3, P4, or P5, you must order proper [transformers](#) or [drivers](#)
- This fixture can be mounted on any Prima Lighting System and ceiling canopy through use of an appropriate adapter, see website for available system codes and specialized spec sheets.
- Consult factory for pricing on fixtures connect to multipoint (**M1~ M7 canopy**)



**DIMENSIONS ARE IN MILLIMETERS [INCHES]**  
**(NOT TO SCALE)**

### Variable Specs

**Note:** Variable spec listed below are dependant on system code selection. [Click here to see specific variations.](#)

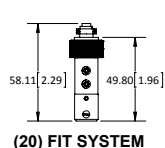
- |                                                             |                                                        |                                |
|-------------------------------------------------------------|--------------------------------------------------------|--------------------------------|
| <input checked="" type="checkbox"/> Black                   | <input checked="" type="checkbox"/> Polished Chrome    | <input type="checkbox"/> White |
| <input checked="" type="checkbox"/> Bronze                  | <input checked="" type="checkbox"/> Silver or Aluminum |                                |
| <input checked="" type="checkbox"/> Champagne (Matted Gold) |                                                        |                                |

Special Note: \*All fixtures and lighting systems must be used with dedicated circuit and a Prima transformer, driver, and/or ballast to comply with cUL/cETL listing; or all warranties are void.

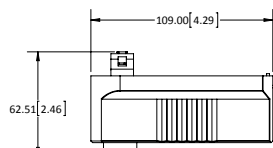
REV. 030521

SYSTEM CODE:	LUMEN STYLES:	FINISH COLORS:
(10) 120V ADAPTER FOR P-TRACK FIXTURE	Not Available	Not Available
(20) FIT SYSTEM	LD/00	BK/SV
(25) 120V RETRO-FIT ADAPTER FOR H-TRACK FIXTURE	Not Available	Not Available
(26) 120V RETRO-FIT ADAPTER FOR J-TRACK FIXTURE	Not Available	Not Available
(27) H-TRACK RETRO FIT ADAPTER	LD/00	BK/SV/WH
(28) J-TRACK RETRO FIT ADAPTER	LD/00	BK/SV/WH
(29) HOUSING ADAPTER FOR P-TRACK	LD/00	BK/SV/WH
(40) LOW VOLTAGE MONORAIL SYSTEM	LD/00	BK/SV/BZ/CP/PC
(42) CABLE SYSTEM – 6" WIDTH	LD/00	SV/PC
(43) CABLE SYSTEM – 2.75" WIDTH	LD/00	SV/PC
(E1) MONOPOINT 5" CANOPY W/ 120V TO 12V TRANSFORMER	00	BK/SV/BZ/PC/CP/WH
(E2) MONOPOINT 5" CANOPY W/ 277V TO 12V TRANSFORMER	00	BK/SV/BZ/PC/CP/WH
(E3) MONOPOINT 5" CANOPY W/ 120V BALLAST OR LED 120V/12V TRANSFORMER	LD	BK/SV/BZ/PC/CP/WH
(E4) MONOPOINT 5" CANOPY W/ 277V BALLAST OR LED 277V/12V TRANSFORMER	LD	BK/SV/BZ/CP/WH
(E5) MONOPOINT 5.5" CANOPY W/ DIMMABLE 120V~277V BALLAST	Not Available	Not Available
(E6) MONOPOINT 5.5" CANOPY W/ CONSTANT CURRENT DRIVER	Not Available	Not Available
(M1-M7) MULTIPOINT	(CONSULT FACTORY)	(CONSULT FACTORY)
(P1) MONOPOINT DIA. 0.7" W/ THREADED NIPPLE MOUNTING	LD/00	BK/SV/BZ/PC/CP/WH
(P2) MONOPOINT DIA. 1.6" W/ THREADED NIPPLE MOUNTING	LD/00	BK/SV/BZ/PC/CP/WH
(P3) MONOPOINT DIA. 1.6" W/ SCREW/ANCHOR MOUNTING	LD/00	BK/SV/BZ/PC/CP/WH
(P4) MONOPOINT 5" DIRECT MOUNT SQUARE COVER PLATE	LD/00	BK/SV/BZ/PC/CP/WH
(P5) MONOPOINT 5" JBOX PLATE	LD/00	BK/SV/BZ/PC/CP/WH

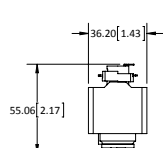
NOTE: DIMENSIONS ARE IN MILLIMETERS [INCHES]



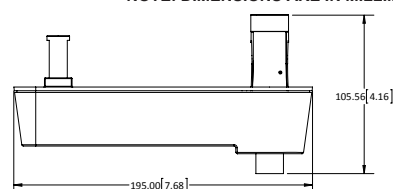
(20) FIT SYSTEM



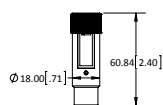
(27) H-TRACK ADAPTER



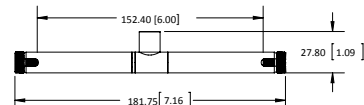
(28) J-TRACK ADAPTER



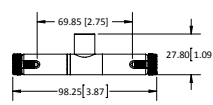
(29) HOUSING ADAPTER FOR P-TRACK



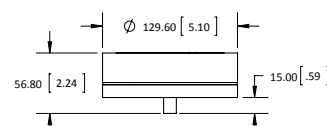
(40) LOW VOLTAGE  
MONORAIL SYSTEM



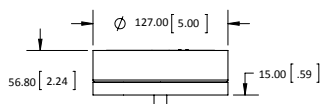
(42) CABLE SYSTEM  
- 6.00" WIDTH



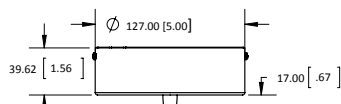
(43) CABLE SYSTEM  
- 2.75" WIDTH



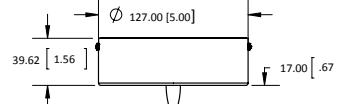
(E1) MONOPOINT 5" CANOPY W/  
120V TO 12V TRANSFORMER



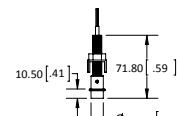
(E2) MONOPOINT 5" CANOPY W/  
277V TO 12V TRANSFORMER



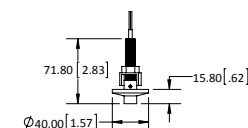
(E3) MONOPOINT 5" CANOPY W/ 120V BALLAST  
OR LED 120V/12V TRANSFORMER



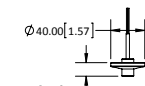
(E4) MONOPOINT 5" CANOPY W/ 277V  
BALLAST OR LED 277V/12V TRANSFORMER



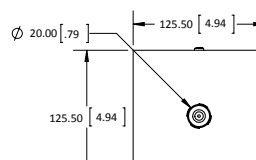
(P1) MONOPOINT DIA. 0.7" W/  
THREADED NIPPLE MOUNTING



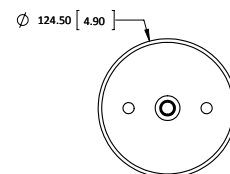
(P2) MONOPOINT DIA. 1.6" W/  
THREADED NIPPLE MOUNTING



(P3) MONOPOINT DIA. 1.6" W/  
SCREW/ANCHOR MOUNTING



(P4) 5" DIRECT MOUNT  
SQUARE COVER PLATE



(P5) MONOPOINT 5" JBOX PLATE

Special Note: \*All fixtures and lighting systems must be used with dedicated circuit and a Prima transformer, driver, and/or ballast to comply with cUL/cETL listing; or all warranties are void.