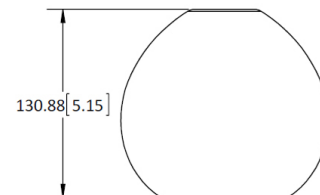
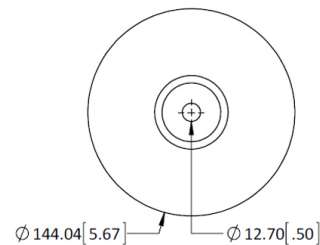


Morton

- Single lamp suspended luminaire pendant with sculpted glass shade
- Suitable for decorative ambient and downlight applications
- Only cable cord suspension option available
- Go to [lamps](#) for other options
- When choosing monopoint P1, P2, P3, P4, or P5, you must order proper [transformers](#) or [drivers](#) separately
- This fixture can be mounted on any Prima Lighting System and ceiling canopy through use of an appropriate adapter, see website for available system codes and specialized spec sheets
- Field-cutable 72" suspension cable

Xelogen (00)	<ul style="list-style-type: none"> ▪ 34X" T [8057" zgrqi gp'o cz057Y "tco r " ▪ 457Y "zgrqi gp'tco r "kpenmf gf " 	
LED	<ul style="list-style-type: none"> ▪ Uwkcdng'hqt"34X"CE" o ci pgule'qt"grgetqple" NGF "tcpuhtqto gt" ▪ Uwkcdng'hqt"34X"FE" grgetqple"eqpuwcpv" xqnci g"t tkxgt" 	L2 <ul style="list-style-type: none"> ▪ 34X" T6Y "T522m " T522MTGNX" flo o lpi "NGF" o qf wrg"
		L4 <ul style="list-style-type: none"> ▪ 342X" lpr w'qpnl " ▪ 34X" T5Y "T3: 2m " T522MTI 6"NGF" o qf wrg" ▪ P qp/F lo o cdng



**DIMENSIONS ARE IN MILLIMETERS [INCHES]
(NOT TO SCALE)**

Variable Specs

Note: Variable spec listed below are dependant on system code selection. [Click here to see specific variations.](#)

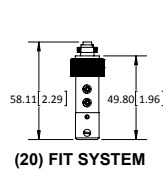
- ☒ Black
 ☒ Polished Chrome
 ☐ White
☒ Bronze
 ☒ Silver or Aluminum
☒ Champagne (Matted Gold)

Special Note: *All fixtures and lighting systems must be used with dedicated circuit and a Prima transformer, driver, and/or ballast to comply with cUL/cETL listing; or all warranties are void.

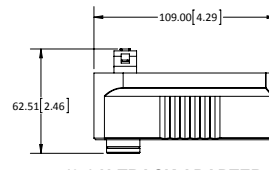
REV. 030521

SYSTEM CODE:	LUMEN STYLES:	FINISH COLORS:
(10) 120V ADAPTER FOR P-TRACK FIXTURE	Not Available	Not Available
(20) FIT SYSTEM	L2/L4/00	BK/SV
(25) 120V RETRO-FIT ADAPTER FOR H-TRACK FIXTURE	Not Available	Not Available
(26) 120V RETRO-FIT ADAPTER FOR J-TRACK FIXTURE	Not Available	Not Available
(27) H-TRACK RETRO FIT ADAPTER	L2/L4/00	BK/SV/WH
(28) J-TRACK RETRO FIT ADAPTER	L2/L4/00	BK/SV/WH
(29) HOUSING ADAPTER FOR P-TRACK	L2/L4/00	BK/SV/WH
(40) LOW VOLTAGE MONORAIL SYSTEM	L2/L4/00	BK/BZ/CP/PC/SV
(42) CABLE SYSTEM – 6" WIDTH	L2/L4/00	BK/PC/SV
(43) CABLE SYSTEM – 2.75" WIDTH	L2/L4/00	BK/PC/SV
(E1) MONOPOINT 5" CANOPY W/ 120V TO 12V TRANSFORMER	00	BK/BZ/CP/PC/SV/WH
(E2) MONOPOINT 5" CANOPY W/ 277V TO 12V TRANSFORMER	00	BK/BZ/CP/PC/SV/WH
(E3) MONOPOINT 5" CANOPY W/ 120V BALLAST OR LED 120V/12V TRANSFORMER	L2/L4	BK/BZ/CP/PC/SV/WH
(E4) MONOPOINT 5" CANOPY W/ 277V BALLAST OR LED 277V/12V TRANSFORMER	L2	BK/BZ/CP/PC/SV/WH
(E5) MONOPOINT 5.5" CANOPY W/ DIMMABLE 120V~277V BALLAST	Not Available	Not Available
(E6) MONOPOINT 5.5" CANOPY W/ CONSTANT CURRENT DRIVER	Not Available	Not Available
(M1-M7) MULTIPOINT	(CONSULT FACTORY)	(CONSULT FACTORY)
(P1) MONOPOINT DIA. 0.7" W/ THREADED NIPPLE MOUNTING	L2/L4/00	BK/BZ/CP/PC/SV/WH
(P2) MONOPOINT DIA. 1.6" W/ THREADED NIPPLE MOUNTING	L2/L4/00	BK/BZ/CP/PC/SV/WH
(P3) MONOPOINT DIA. 1.6" W/ SCREW/ANCHOR MOUNTING	L2/L4/00	BK/BZ/CP/PC/SV/WH
(P4) MONOPOINT 5" DIRECT MOUNT SQUARE COVER PLATE	L2/L4/00	BK/BZ/CP/PC/SV/WH
(P5) MONOPOINT 5" JBOX PLATE	L2/L4/00	BK/BZ/CP/PC/SV/WH

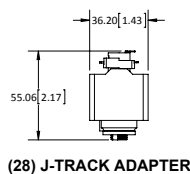
NOTE: DIMENSIONS ARE IN MILLIMETERS [INCHES]



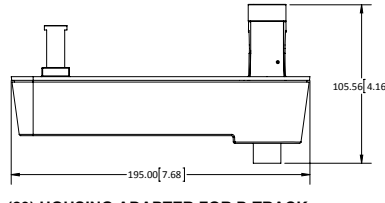
(20) FIT SYSTEM



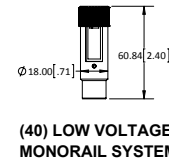
(27) H-TRACK ADAPTER



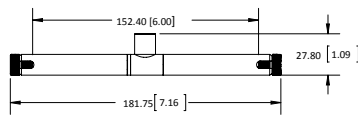
(28) J-TRACK ADAPTER



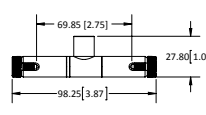
(29) HOUSING ADAPTER FOR P-TRACK



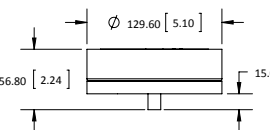
(40) LOW VOLTAGE MONORAIL SYSTEM



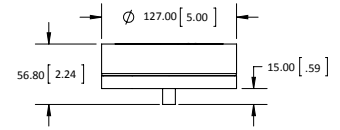
(42) CABLE SYSTEM
- 6.00" WIDTH



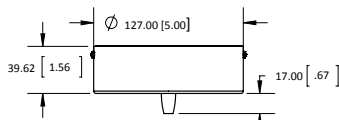
(43) CABLE SYSTEM
- 2.75" WIDTH



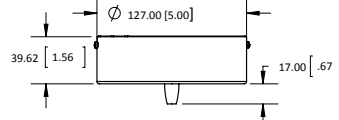
(E1) MONOPOINT 5" CANOPY W/
120V TO 12V TRANSFORMER



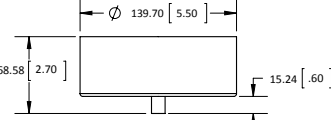
(E2) MONOPOINT 5" CANOPY W/
277V TO 12V TRANSFORMER



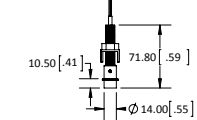
(E3) MONOPOINT 5" CANOPY W/ 120V BALLAST
OR LED 120V/12V TRANSFORMER



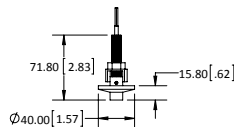
(E4) MONOPOINT 5" CANOPY W/ &+v
BALLAST OR LED 277V/12V TRANSFORMER



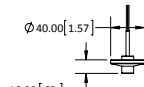
(E5) MONOPOINT 5.5" CANOPY W/
DIMMABLE 120V~277V BALLAST



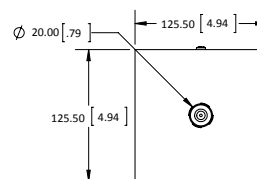
(P1) MONOPOINT DIA. 0.7" W/
THREADED NIPPLE MOUNTING



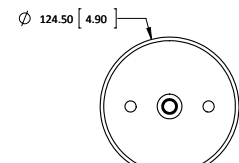
(P2) MONOPOINT DIA. 1.6" W/
THREADED NIPPLE MOUNTING



(P3) MONOPOINT DIA. 1.6" W/
SCREW/ANCHOR MOUNTING



(P4) 5" DIRECT MOUNT
SQUARE COVER PLATE



(P5) MONOPOINT 5" JBOX PLATE