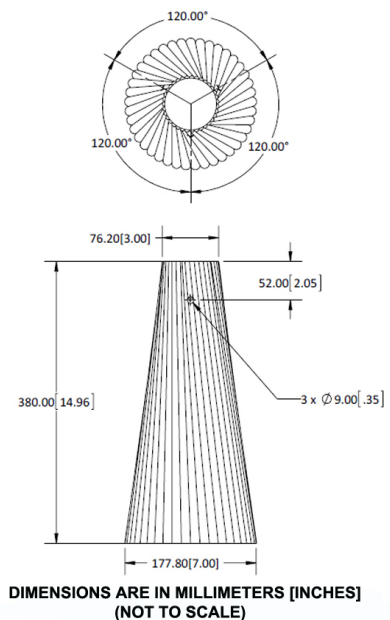


D`Ujh

- Single lamp suspended luminaire pendant with sculpted glass shade
- Suitable for decorative ambient and downlight applications
- Go to **lamps** for other options
- When choosing monopoint P1, P2, P3, P4, or P5, you must order proper **transformers** or **drivers** separately
- This fixture can be mounted on any Prima Lighting System and ceiling canopy through use of an appropriate adapter, see website for available system codes and specialized spec sheets
- Field-cuttable 72" suspension cable

Xelogen (00)	<ul style="list-style-type: none"> ▪ 12V GY6.35 max. 50W xelogen lamp ▪ 35W xelogen lamp included 		
LED	<ul style="list-style-type: none"> ▪ Suitable for 12V AC magnetic or electronic LED transformer ▪ Suitable for 12V DC electronic constant voltage driver 	L2	<ul style="list-style-type: none"> ▪ 12V / 4W / 300lm / 3000K / ELV dimming LED module
CFL	<ul style="list-style-type: none"> ▪ HPF ballast ▪ 1: W CF lamp option ▪ When dimming is chosen (CD), maximum length is 36" 		



Variable Specs

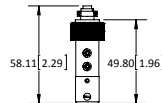
Note: Variable spec listed below are dependant on system code selection. [Click here to see specific variations.](#)

- ☒ Black
 ☒ Polished Chrome
 ☐ White
- ☒ Bronze
 ☒ Silver or Aluminum
- ☒ Champagne (Matted Gold)

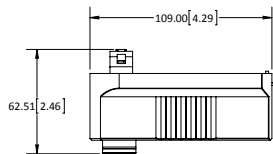
Special Note: *All fixtures and lighting systems must be used with dedicated circuit and a Prima transformer, driver, and/or ballast to comply with cUL/cETL listing; or all warranties are void.

SYSTEM CODE:	LUMEN STYLES:	FINISH COLORS:
(10) 120V ADAPTER FOR P-TRACK FIXTURE	Not Available	Not Available
(20) FIT SYSTEM	L2/00	BK/SV
(25) 120V RETRO-FIT ADAPTER FOR H-TRACK FIXTURE	Not Available	Not Available
(26) 120V RETRO-FIT ADAPTER FOR J-TRACK FIXTURE	Not Available	Not Available
(27) H-TRACK RETRO FIT ADAPTER	L2/00	BK/SV/WH
(28) J-TRACK RETRO FIT ADAPTER	L2/00	BK/SV/WH
(29) HOUSING ADAPTER FOR P-TRACK	L2/00/CF	BK/SV/WH
(40) LOW VOLTAGE MONORAIL SYSTEM	L2/00	BK/BZ/CP/PC/SV
(42) CABLE SYSTEM – 6" WIDTH	L2/00	BK/PC/SV
(43) CABLE SYSTEM – 2.75" WIDTH	L2/00	BK/PC/SV
(E1) MONOPOINT 5" CANOPY W/ 120V TO 12V TRANSFORMER	00	BK/BZ/CP/PC/SV/WH
(E2) MONOPOINT 5" CANOPY W/ 277V TO 12V TRANSFORMER	00	BK/BZ/CP/PC/SV/WH
(E3) MONOPOINT 5" CANOPY W/ 120V BALLAST OR LED 120V/12V TRANSFORMER	L2/CF	BK/BZ/CP/PC/SV/WH
(E4) MONOPOINT 5" CANOPY W/ 277V BALLAST OR LED 277V/12V TRANSFORMER	L2/CF	BK/BZ/CP/PC/SV/WH
(E5) MONOPOINT 5.5" CANOPY W/ DIMMABLE 120V~277V BALLAST	CD	BK/BZ/CP/PC/SV/WH
(E6) MONOPOINT 5.5" CANOPY W/ CONSTANT CURRENT DRIVER	Not Available	Not Available
(M1-M7) MULTIPOINT	(CONSULT FACTORY)	(CONSULT FACTORY)
(P1) MONOPOINT DIA. 0.7" W/ THREADED NIPPLE MOUNTING	L2/00	BK/BZ/CP/PC/SV/WH
(P2) MONOPOINT DIA. 1.6" W/ THREADED NIPPLE MOUNTING	L2/00	BK/BZ/CP/PC/SV/WH
(P3) MONOPOINT DIA. 1.6" W/ SCREW/ANCHOR MOUNTING	L2/00	BK/BZ/CP/PC/SV/WH
(P4) MONOPOINT 5" DIRECT MOUNT SQUARE COVER PLATE	L2/00	BK/BZ/CP/PC/SV/WH
(P5) MONOPOINT 5" JBOX PLATE	L2/00	BK/BZ/CP/PC/SV/WH

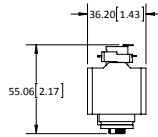
NOTE: DIMENSIONS ARE IN MILLIMETERS [INCHES]



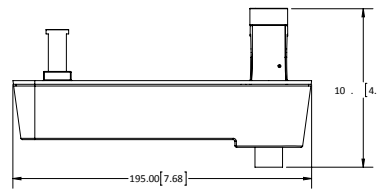
(20) FIT SYSTEM



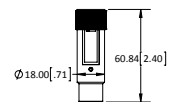
(27) H-TRACK ADAPTER



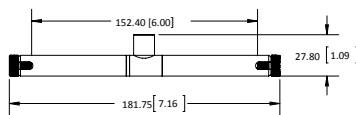
(28) J-TRACK ADAPTER



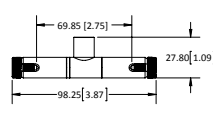
(29) HOUSING ADAPTER FOR P-TRACK



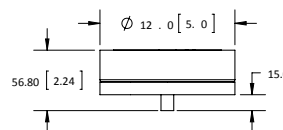
(40) LOW VOLTAGE MONORAIL SYSTEM



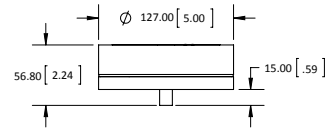
(42) CABLE SYSTEM
- 6.00" WIDTH



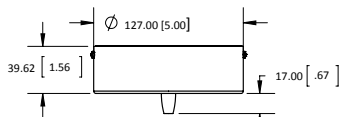
(43) CABLE SYSTEM
- 2.75" WIDTH



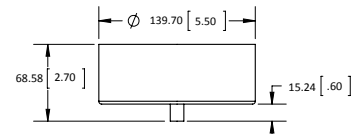
(E1) MONOPOINT 5" CANOPY W/
120V TO 12V TRANSFORMER



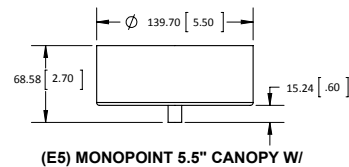
(E2) MONOPOINT 5" CANOPY W/
277V TO 12V TRANSFORMER



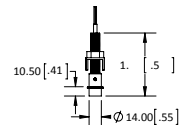
(E3) MONOPOINT 5" CANOPY W/ 120V BALLAST
OR LED 120V/12V TRANSFORMER



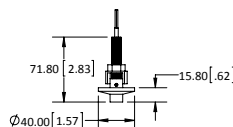
(E4) MONOPOINT 5" CANOPY W/ &+V
BALLAST OR LED 277V/12V TRANSFORMER



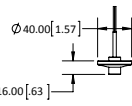
(E5) MONOPOINT 5.5" CANOPY W/
DIMMABLE 120V~277V BALLAST
(E6) MONOPOINT 5.5" CANOPY W/
CONSTANT CURRENT DRIVER



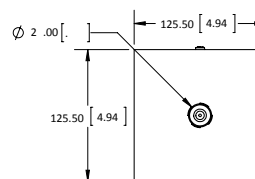
(P1) MONOPOINT DIA. 0.7" W/
THREADED NIPPLE MOUNTING



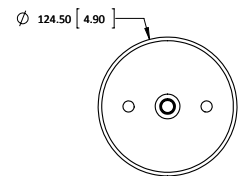
(P2) MONOPOINT DIA. 1.6" W/
THREADED NIPPLE MOUNTING



(P3) MONOPOINT DIA. 1.6" W/
SCREW/ANCHOR MOUNTING



(P4) 5" DIRECT MOUNT
SQUARE COVER PLATE



(P5) MONOPOINT 5" JBOX PLATE