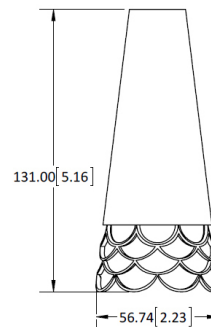
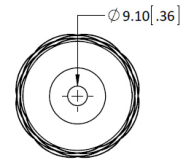


Tiffany II

- Single lamp suspended luminaire pendant with sculpted glass shade with glass detail
- Solid brass hardware with powder coat or metal plated finish
- Suitable for decorative ambient applications.
- Only cable suspension option available
- Go to **lamps** for other options
- When choosing monopoint P1, P2, P3, P4, or P5, you must order proper **transformers** or **drivers**
- This fixture can be mounted on any Prima Lighting System and ceiling canopy through use of an appropriate adapter, see website for available system codes and specialized spec sheets.
- Field-cuttable 72" suspension cable

Xelogen (00)	<ul style="list-style-type: none"> ▪ 12V G4 max. 20W xelogen lamp ▪ 20W xelogen lamp included
LED (L4)	<ul style="list-style-type: none"> ▪ Suitable for 12V AC magnetic or electronic LED transformer ▪ Suitable for 12V DC electronic constant voltage driver ▪ 120V input only ▪ 12V / 3W / 180lm / 3000K G4 LED module ▪ Non-Dimmable



**DIMENSIONS ARE IN MILLIMETERS [INCHES]
(NOT TO SCALE)**

Variable Specs

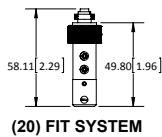
Note: Variable spec listed below are dependant on system code selection. [Click here to see specific variations.](#)

- Black
Polished Chrome
White
- Bronze
Silver or Aluminum
- Champagne (Matted Gold)

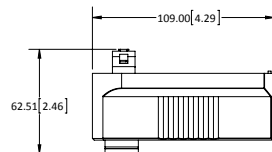
Special Note: *All fixtures and lighting systems must be used with dedicated circuit and a Prima transformer, driver, and/or ballast to comply with cUL/cETL listing; or all warranties are void.

SYSTEM CODE:	LUMEN STYLES:	FINISH COLORS:
(10) 120V ADAPTER FOR P-TRACK FIXTURE	Not Available	Not Available
(20) FIT SYSTEM	L4/00	BK/SV
(25) 120V RETRO-FIT ADAPTER FOR H-TRACK FIXTURE	Not Available	Not Available
(26) 120V RETRO-FIT ADAPTER FOR J-TRACK FIXTURE	Not Available	Not Available
(27) H-TRACK RETRO FIT ADAPTER	L4/00	BK/SV/WH
(28) J-TRACK RETRO FIT ADAPTER	L4/00	BK/SV/WH
(29) HOUSING ADAPTER FOR P-TRACK	L4/00	BK/SV/WH
(40) LOW VOLTAGE MONORAIL SYSTEM	L4/00	BK/SV/BZ/CP/PC
(42) CABLE SYSTEM – 6" WIDTH	L4/00	BK/SV/PC
(43) CABLE SYSTEM – 2.75" WIDTH	L4/00	BK/SV/PC
(E1) MONOPOINT 5" CANOPY W/ 120V TO 12V TRANSFORMER	00	BK/SV/BZ/PC/CP/WH
(E2) MONOPOINT 5" CANOPY W/ 277V TO 12V TRANSFORMER	00	BK/SV/BZ/PC/CP/WH
(E3) MONOPOINT 5" CANOPY W/ 120V BALLAST OR LED 120V/12V TRANSFORMER	L4	BK/SV/BZ/PC/CP/WH
(E4) MONOPOINT 5" CANOPY W/ 277V BALLAST OR LED 277V/12V TRANSFORMER	Not Available	Not Available
(E5) MONOPOINT 5.5" CANOPY W/ DIMMABLE 120V~277V BALLAST	Not Available	Not Available
(E6) MONOPOINT 5.5" CANOPY W/ CONSTANT CURRENT DRIVER	Not Available	Not Available
(M1-M7) MULTIPOINT	(CONSULT FACTORY)	(CONSULT FACTORY)
(P1) MONOPOINT DIA. 0.7" W/ THREADED NIPPLE MOUNTING	L4/00	BK/SV/BZ/PC/CP/WH
(P2) MONOPOINT DIA. 1.6" W/ THREADED NIPPLE MOUNTING	L4/00	BK/SV/BZ/PC/CP/WH
(P3) MONOPOINT DIA. 1.6" W/ SCREW/ANCHOR MOUNTING	L4/00	BK/SV/BZ/PC/CP/WH
(P4) MONOPOINT 5" DIRECT MOUNT SQUARE COVER PLATE	L4/00	BK/SV/BZ/PC/CP/WH
(P5) MONOPOINT 5" JBOX PLATE	L4/00	BK/SV/BZ/PC/CP/WH

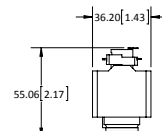
BCH9.8-A9BG-CBG5F9-B'A-00A9H9FG0B7<9GQ



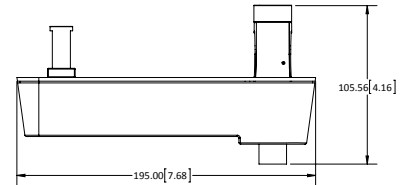
(20) FIT SYSTEM



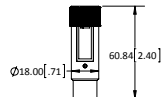
(27) H-TRACK ADAPTER



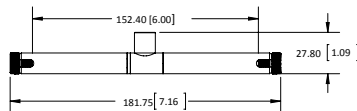
(28) J-TRACK ADAPTER



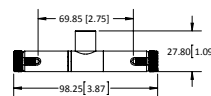
(29) HOUSING ADAPTER FOR P-TRACK



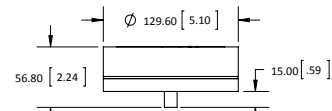
(40) LOW VOLTAGE
MONORAIL SYSTEM



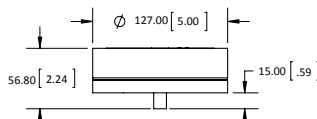
(42) CABLE SYSTEM
- 6.00" WIDTH



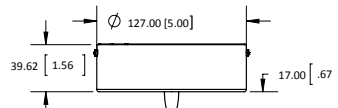
(43) CABLE SYSTEM
- 2.75" WIDTH



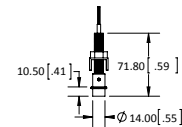
(E1) MONOPOINT 5" CANOPY W/
120V TO 12V TRANSFORMER



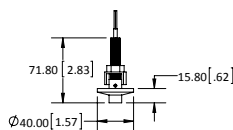
(E2) MONOPOINT 5" CANOPY W/
277V TO 12V TRANSFORMER



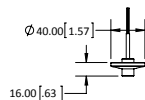
(E3) MONOPOINT 5" CANOPY W/ 120V BALLAST
OR LED 120V/12V TRANSFORMER



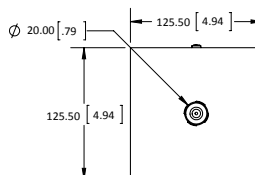
(P1) MONOPOINT DIA. 0.7" W/
THREADED NIPPLE MOUNTING



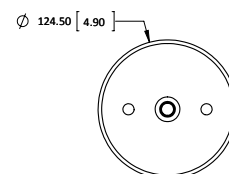
(P2) MONOPOINT DIA. 1.6" W/
THREADED NIPPLE MOUNTING



(P3) MONOPOINT DIA. 1.6" W/
SCREW/ANCHOR MOUNTING



(P4) 5" DIRECT MOUNT
SQUARE COVER PLATE



(P5) MONOPOINT 5" JBOX PLATE