

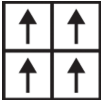
Peto II 26 Tile

Product Type	Carpet Tile
Style Number	59371
Construction	Textured Loop
Fiber	Ecosolution Q100® Nylon
Dye Method	100% Solution Dyed
Primary Backing	Synthetic
Secondary Backing	Ecworx® Tile
Protective Treatments	SSP® Shaw Soil Protection
Recommended Adhesive	LokDots, 3000 Carpet Tile 4 Gallon, 3000 Carpet Tile 1 Gallon, 4151 Multi-Use Carpet Tile 4 Gallon, 5000 Carpet Tile 1 Gallon, LokWorx Adhesive Tabs, 3800 Indoor Outdoor Carpet Tile 4 Gallon or 5000 Carpet Tile 4 Gallon

	u.s.	metric
Product Size	24 in x 24 in	61 cm x 61 cm
Area per Carton	48 ft²	4.46 m²
Pieces per Carton	12 pcs	
Gauge	1/10 in	39.4 per 10 cm
Stitches	10.5 per in	42.5 per 10 cm
Finished Pile Thickness	0.114 in	2.9 mm
Average Density	8211 oz/yd³	0.304 g/cm³
Kilotex		15.11
Total Thickness	0.264 in	6.71 mm
Tufted Weight	26 oz/yd²	881.5 g/m²



Recommended Installation Method



Monolithic

Performance + Testing

Radiant Panel	Class I
NBS Smoke	Less Than 450
Electrostatic Propensity	Less Than 3.5 kv
CRI Green Label Plus (GLP)	GLP9968
Pill Test	Pass*
ADA Compliance	>0.6, meets the recommended static coefficient of friction for ADA walking surfaces and accessible routes***

Test Reports may be included or listed by the manufacturing/inventory style number as opposed to the noted selling style number.

Warranties

Lifetime Commercial Limited Warranty

Diversity & Inclusion

We believe all humans are equal. Individually and collectively, we need to proactively create and promote opportunities that give everybody an equal footing in life. We nurture an environment where every voice and perspective can be heard, and proactively promote accessibility and inclusivity inside our network and beyond. One proof point is our ability to meet the criteria of the Social Fairness pillar of the Cradle to Cradle Product Standard. At Shaw Industries, we promote supplier participation that is reflective of Shaw's diverse customer base and local community. More than 42% of our spend\*\*\*\*\* is with small and diverse businesses. We believe having a strong Supplier Diversity Program is strategic for bringing more innovation to our businesses and openingnew markets for growth.

Material Health & Environmental Certifications

Certifications below apply exclusively to the carpet tile rug itself and not the LokWorx Tabs adhesive

Health & Wellbeing

Material Ingredient Transparency

Cradle to Cradle Certified® | Silver Level (Version 4.0)  
Health Product Declaration (HPD) | 1,000 ppm Disclosure  
Living Building Challenge (LBC) | Free of Red List Chemicals  
Declare | LBC Compliant  
NSF 140 | Gold  
CRI Green Label Plus (GLP) | GLP9968

Indoor Air Quality

Climate Impact

Environmental Product Declaration (EPD)  
Embodied Carbon (Cradle to Gate)  
Life-Cycle Carbon Emissions  
Total Recycled Content  
Product Packaging

3rd Party Certified in Accordance with ISO14044, ISO14025 & EN15804  
3.87 kg CO<sub>2</sub>/m<sup>2</sup>  
Carbon Neutral  
60% (Pre-Consumer 60% | Post-Consumer 0%)  
100% Recyclable

Global Product Assessment

Singapore Green Label | Certified  
GSA | Approved  
CE Marking (EN 14041) | 3rd Party Certified  
Environmental Guarantee\* | Re[turn] Reclamation Program\* | Through Our Environmental Guarantee, Shaw Pledges to Transport And Recycle Any Ecoworx Carpet.  
Country of Origin\*\* | USA

WELL V2 Contribution Credit

X08 Hazardous Material Reduction  
Part 1: Limit Hazardous Materials Optimization  
X10 Volatile Compound Reduction  
Part 1 (A): Manage Volatile Organic Compounds (VOCs) Optimization  
X11 Long Term Emissions Control  
Part 2: Flooring Optimization  
X13 Enhanced Material Precaution  
Part 1: Select Optimized Materials Optimization  
X14 Material Transparency  
Part 1: Promote Ingredient Disclosure Optimization

C2C Silver Level (Version 4.0)  
C2C Silver Level (Version 4.0)  
Green Label Plus Certification: GLP9968  
C2C Silver Level (Version 4.0)  
C2C Silver Level (Version 4.0)

### Leed v4 Contribution Credits

MR Credit: Building Product Disclosure and Optimization  
Environmental Product Declarations - Option 1: Environmental Product Declaration (EPD)

MR Credit: Building Product Disclosure and Optimization  
Material Ingredients - Option 1: Material Ingredient Reporting

MR Credit: Building Product Disclosure and Optimization  
Material Ingredients - Option 2: Material Ingredient Optimization

MR Credit: Building Product Disclosure and Optimization  
Sourcing of Raw Materials - Option 2: Leadership Extraction Practices

EQ Credit: Low Emitting Materials  
Option 1: Product Category Calculations

MR Credit: Interiors Life-Cycle Impact Reduction  
Option 3: Design for Flexibility

**3rd Party Certified in Accordance with ISO14044, ISO14025 & EN15804**

**C2C Silver Level (Version 4.0) or HPD (Version 2.1)**

**C2C Silver Level (Version 4.0)**

**Environmental Guarantee: Re[turn] Reclamation Program\* | Through Our Environmental Guarantee, Shaw Pledges to Transport And Recycle Any Ecoworx Carpet.**

**Green Label Plus Certification: GLP9968**

**Ecoworx Tile with Lokdots Installation System**

### Available Colorways



Coconut 71111



Beechwood 71150



Bronze 71205



Jade Pebbles 71300



Spa Day 71306



Indian Chai Tea 71309



Coastal Getaway 71321



Oak Alley 71330



Gecko 71335



Water Lily 71345



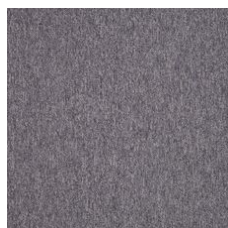
Sun And Moon 71350



Reflecting Pool 71351



Mastermind 71355



Sing Blue Silver 71402



Nautical 71435



Bon Voyage 71440



Manhattan Blues 71445



Bird Bath 71450



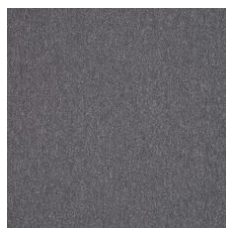
Bluegrass Jazz 71455



Poolside 71460



Wisdom 71465



Blu Crush 71481

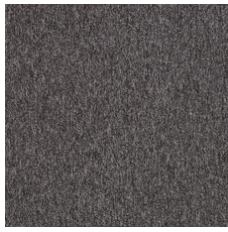


Moonstruck 71505



Top Brass 71520

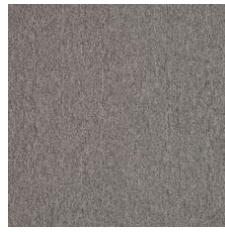




Slate 71525



Going For Green 71545



Pure Titanium 71595



School Girl 71615



Courtyard 71700



Coffee Break 71761



Bumbleberry 71820



Tango 71825



Rose Trellis 71830



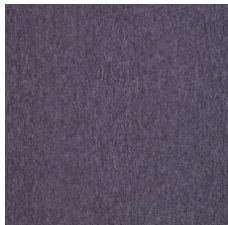
Icy Azur 71900



Mature 71915



Pert 71920



Plum Martini 71965

### Additional Information

\* To learn more about the recyclability of our products and our re[TURN], please visit [shawcontract.com/sustainability](https://shawcontract.com/sustainability).

\*\*Meets or exceeds all local and national regulations in country of manufacture.

\*\*\*This carpet is manufactured to be ADA compliant, but to be fully ADA compliant, the end-user must ensure the carpet is adhered to the floor and installed as outlined in the ADA standards.

[Installation Guidelines](#)

[Maintenance Guidelines](#)

Specifications are subject to nominal manufacturing variance. Material supply and/or manufacturing processes may necessitate changes without notice.

This product is an exclusive design and may not be duplicated in any manner. Use of this design in the creation of another product design is also strictly prohibited.

Visit [shawcontract.com/testing](https://shawcontract.com/testing) for more information.



**PVC-Free**

Corporate Headquarters +1 800 257 7429 | +1 706 532 7984 | Atlanta +1 404 853 7429 | Bengaluru +91 80 6773 0202 | Beijing +86 10 6568 588 | Chicago +1 312 467 1331 | Dubai +971 4 584 6956 | Hong Kong +852 2623 0371 | Latin America (Miami) +1 305 827 5912 | London +44 207 961 4120 | Los Angeles +1 800 233 1614 | Melbourne +61 3 9939 8543 | Mexico City +55 5010 7600 | Mumbai +91 22 6284 5050 | Nantong +86 400 800 7429 | New York +1 212 953 7429 | Paris +33 (0) 1 81 22 44 39 | San Francisco +1 415 955 1920 | Santiago +562 2431 5000 x 550 | São Paulo +55 11 3071 1702 | Shanghai +86 21 3338 4000 | Singapore +65 6733 1811 | Sydney +61 800 556 302

© 2025 Shaw Industries Group, Inc., a Berkshire Hathaway Company  
March 1, 2025

4 of 4