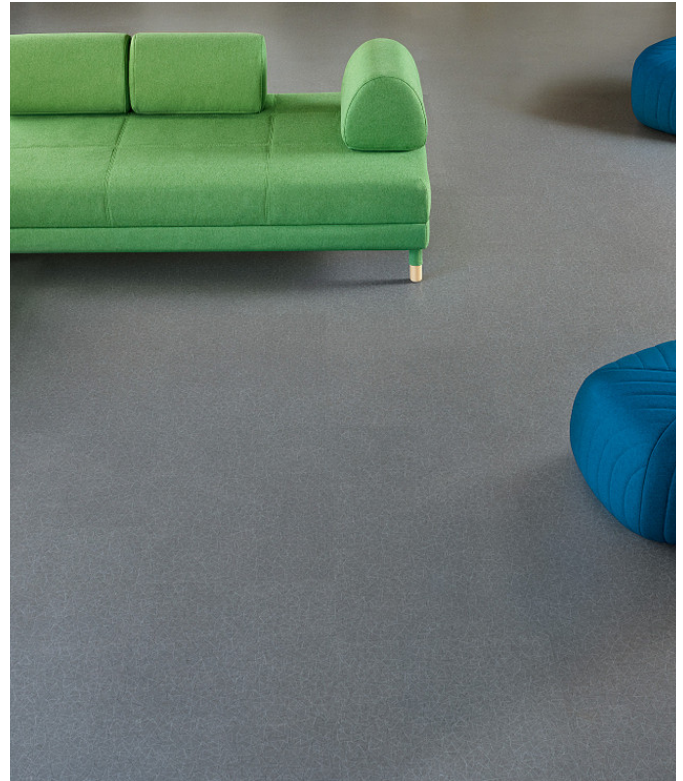


Joy Squared

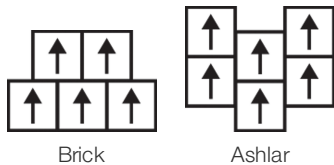
Collection	Joy Squared	
Style Number	0993V	
Construction	Heavy Commercial Luxury Vinyl Tile	
Class / ASTM F1700	Class III, Type B	
Finish	ExoGuard+®	
	U.S.	Metric
Nominal Dimensions	24 in w x 24 in l	61 cm w x 61 cm l
Actual Dimensions	24.00 in w x 24.00 in l	60.96 cm w x 60.96 cm l
Wear Layer Thickness	20 mil (0.02 in)	0.51 mm
Overall Thickness	0.098 in	2.5 mm
Edge Profile	Squared Edge	
Installation Type	Dry Back	
Installation	Direct Glue	
Recommended Adhesive	S150-95 Resilient Tile Spray, , 4200 Resilient Tile 4 Gallon, 2200 Semi-Wet Resilient 4 Gallon Pail, 2200 Semi-Wet Resilient 1 Gallon Pail, or 4151 Multi-Use Premium 4 Gallon	



Packaging

Pieces per Carton	17 pcs	
Area per Carton	68 sq ft	6.32 sq m
Weight per Carton	57.79 lbs	26.21 kg

Recommended Installation Method



Coordinating Products

LVT: Joy Squared 12x48

Performance + Testing

Static Load (ASTM F970)	Passes (Modified), *1500 lbs
Resistance to Heat (ASTM F1514)	Passes
Resistance to Light (ASTM F1515)	Passes
Resistance to Chemicals (ASTM F925)	Passes
Radiant Panel (ASTM E648)	Passes, Class I

*This test is intended to compare relative properties of different styles and constructions. Results are based on a laboratory test and used for comparative purposes - real life load limit may vary.

Test Reports may be included or listed by the manufacturing/inventory style number as opposed to the noted selling style number.

Warranties

[15 Year Commercial Limited Warranty](#)

[Commercial 15 Year Underbed Bond Warranty](#)

Diversity, Equity & Inclusion

We believe all humans are equal. Individually and collectively, we need to proactively create and promote opportunities that give everybody an equal footing in life. We nurture an environment where every voice and perspective can be heard, and proactively promote accessibility and inclusivity inside our network and beyond. One proof point is our ability to meet the criteria of the Social Fairness pillar of the Cradle to Cradle Product Standard. At Shaw Industries, we promote supplier participation that is reflective of Shaw's diverse customer base and local community. More than 42% of our spend***** is with small and diverse businesses. We believe having a strong Supplier Diversity Program is strategic for bringing more innovation to our businesses and opening new markets for growth.

Material Health & Environmental Certifications

Health & Wellbeing

Material Ingredient Transparency

[Health Product Declaration \(HPD\) | 1000 ppm Disclosure](#)

Climate Impact

Environmental Product Declaration (EPD)

[3rd Party Certified in Accordance with ISO 14025, EN 15804, & ISO 21930:2017](#)

Total Recycled Content

30% (Pre-Consumer 30% | Post-Consumer 0%)

Global Product Assessment

[Environmental Guarantee* | Through Our Environmental Guarantee, Shaw Pledges to Transport And Recycle Any Shaw Manufactured Resilient Within The United States And Canada At No Cost to The Customer.](#)

[FloorScore® | Certified](#)

GSA | Approved

CE Marking (EN 14041) | 3rd Party Certified

Country of Origin | United States

WELL V2 Contribution Credit

X01 Fundamental Material Precautions
Part 1: (C): Restrict Asbestos Precondition

Absence of Asbestos

X08 Hazardous Material Reduction
Part 1: Limit Hazardous Materials Optimization

Absence of Heavy Metals

X10 Volatile Compound Reduction
Part 1 (A): Manage Volatile Organic Compounds (VOCs) Optimization

Absence of Halogenated Flame Retardants

X10 Volatile Compound Reduction
Part 2: Manage Semi-Volatile Organic Compounds (SVOCs) Optimization

Ortho-Phthalates

X11 Long Term Emissions Control
Part 2: Flooring Optimization

FloorScore Certificate

Leed v4 Contribution Credits

MR Credit: Building Product Disclosure and Optimization
Material Ingredients - Option 1: Material Ingredient Reporting

MR Credit: Building Product Disclosure and Optimization
Environmental Product Declarations - Option 1: Environmental Product Declaration (EPD)

EQ Credit: Low Emitting Materials
Option 1: Product Category Calculations

Health Product Declaration (HPD) | 100 Ppm Disclosure

3rd Party Certified in Accordance with ISO 14025, EN 15804, & ISO 21930:2017

FloorScore Certified

Additional Information

* To learn more about the recyclability of our products and our Environmental Guarantee, please visit shawcontract.com/sustainability.

[Installation Guidelines](#)

[Maintenance Guidelines](#)

Please visit www.shawcontract.com for the most current warranty information.

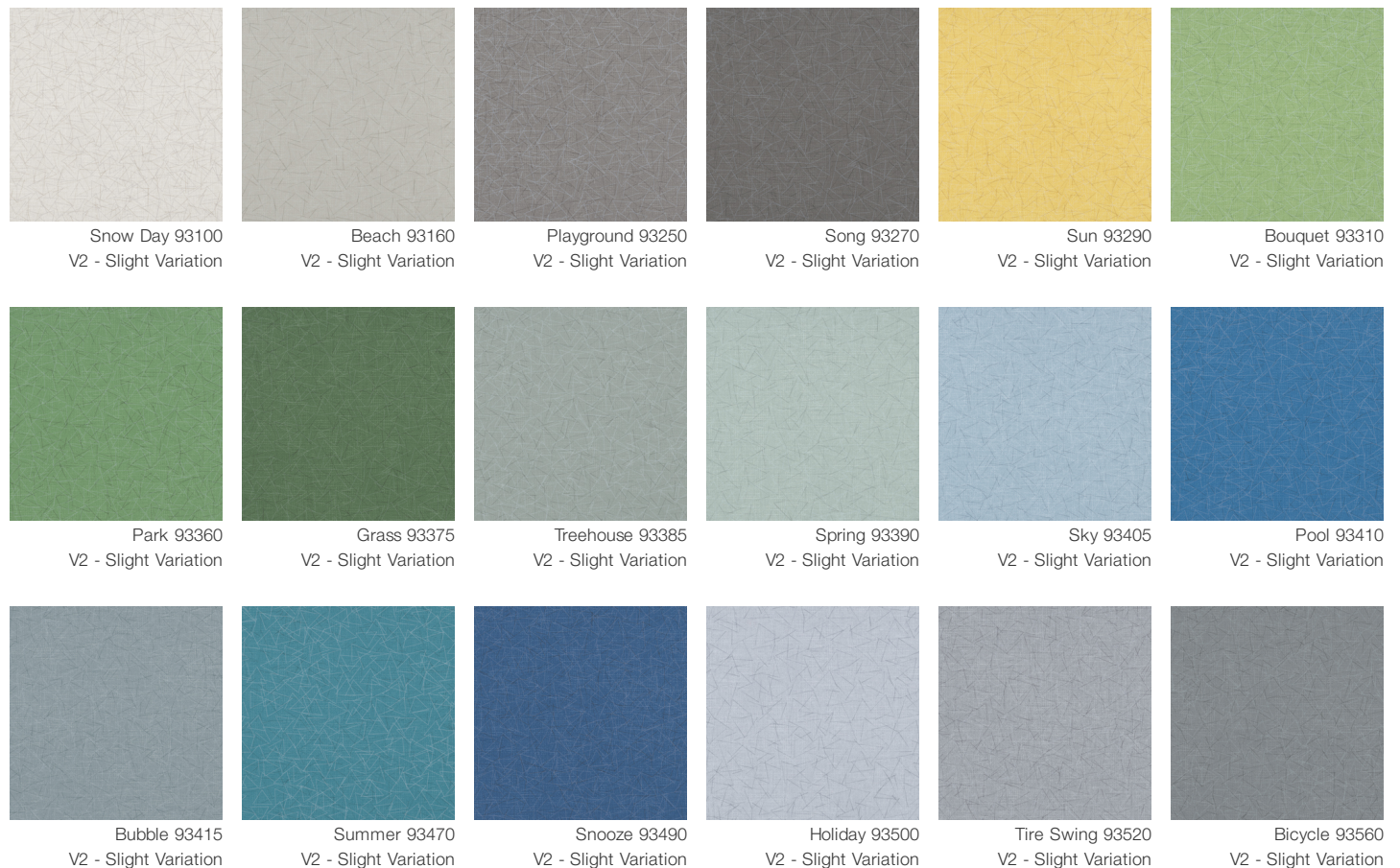
Specifications are subject to nominal manufacturing variance. Material supply and/or manufacturing processes may necessitate changes without notice.

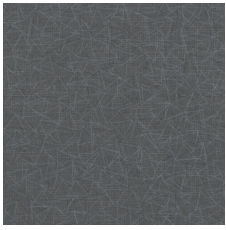
This product is an exclusive design and may not be duplicated in any manner. Use of this design in the creation of another product design is also strictly prohibited.

****Allowable spend is domestic (US) spend in categories in which we have diverse suppliers from which to choose. Compared to non-allowable spend which includes categories in which we do not have domestic, small or diverse suppliers available to meet our needs.

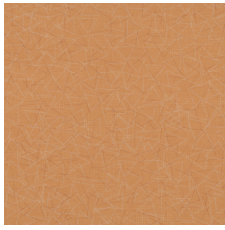
Visit shawcontract.com/testing for more information.

Available Colorways





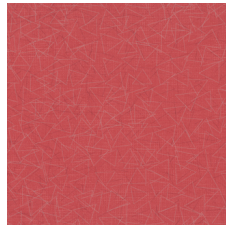
Firefly 93595
V2 - Slight Variation



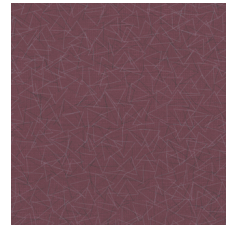
Firework 93680
V2 - Slight Variation



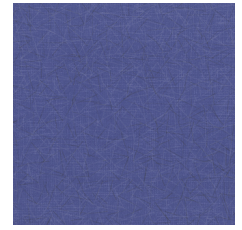
Backyard 93761
V2 - Slight Variation



Balloon 93890
V2 - Slight Variation



Carousel 93895
V2 - Slight Variation



Sprinkle 93995
V2 - Slight Variation

Color and Visual Variation Index

Shade and texture variation is inherent in all resilient products and can vary significantly from piece to piece. Samples should be used to assess color.

