



GSA prices effective October 7, 2024  
(based on July 1, 2024, commercial price list)  
Published January 2025

## Nemschoff® Lounge and Multiple Seating

### Nemschoff Brava Collection

#### General Services Administration Federal Supply Service Authorized Federal Supply Schedule Price List

Online access to contract ordering information, terms and conditions, up-to-date pricing, and the option to create an electronic delivery order is available through GSA Advantage!®, a menu-driven database system. The Internet address for GSA Advantage! is [www.gsaadvantage.gov](http://www.gsaadvantage.gov).

Office Furniture  
FSC/PSC 7110/7125  
Contract Number: GS-03F-036DA  
UEI: Q2K3MSZ843D8  
Contract Period: December 21, 2015—December 20, 2025

MillerKnoll, Inc.  
855 East Main Avenue  
Zeeland, Michigan 49464  
(616) 654 3000 Phone  
(616) 654 8278 Fax  
[www.HermanMiller.com/government](http://www.HermanMiller.com/government)

Business Size: Large



# Contract Information

## 1a. Special Item Numbers (SIN)

SIN 33721

Furniture Systems, Computer Furniture, Filing and Storage, Tables and Accessories, Upholstered Seating and Multi-Purpose Seating, Project Management, Reconfiguration and Relocation Services, Design/Layout and Installation Services

SIN 33721P

Packaged Offices

SIN 337127

Modular Laboratory Furniture Systems

SIN 339113H

Healthcare Furniture

SIN OLM

Order-Level Materials (OLMs)

This SIN is only for products and/or services used in direct support of the purchase of new furniture. It requires approval from the ordering Contract Officer. Please contact your local MillerKnoll Inc. representative to discuss the appropriate use of this SIN.

SIN 532289

Leasing

Contact MillerKnoll Inc participating government dealer for current leasing information.

## 1b. Lowest Priced Model

SIN 33721:	BVP3.S	\$7.27
SIN 33127:	TW113	\$5.81
SIN 339113H:	CR900NR	\$483.80

## 1c. Service Rates

Project Management

Furniture Project Manager: \$64.75 per hour  
Furniture Project Coordinator: \$49.00 per hour  
Build-Out Project Manager: \$80.00 per hour

Reconfiguration and Relocation Services

Not to exceed \$55 per hour.

See \* Additional Notes for Installation & Reconfiguration and Relocation Services.

Design/Layout

Not to exceed \$65 per hour.

Installation Services

Not to exceed \$55 per hour (\$82.50 per hour for after-hours Installation).

See \* Additional Notes for Installation & Reconfiguration and Relocation Services.

## 2. Maximum Order

SIN 33721, 337127, NEW, OLM

\$250,000 net product value

SIN 33721P

\$250,000 net value

SIN 339113H

\$500,000 net product value

## 3. Minimum Order

\$100 net

## 4. Geographic Coverage

Continental U.S.

Orders for Alaska, Hawaii, and Puerto Rico will be shipped F.O.B. inland carrier point of exportation.

## 5. Point of Production

Zeeland, Ottawa County, Michigan

Spring Lake, Ottawa County, Michigan

Elland, Yorkshire, United Kingdom

Hildebran, Burke County, North Carolina, USA

## 6. Pricing

Prices shown are list. Discounts include Industrial Funding Fee.

SIN 33721

Standard Lead Time, Single Order Net Purchase \$100 - 250,000, includes approved Herman Miller Options Products.

Product Line	Discount From List
Action Office 1	73.8%
Action Office 2	73.8%
Aeron	64.5%
Ambit Workspace Solutions	74.3%
Asari Chair	53.7%
Aside	64.2%
Bay Work Pod	56.7%
C-Style Overhead Storage	73.8%
Canvas Office Landscape Channel	74.8%
Canvas Office Landscape Dock	74.8%
Canvas Metal Desk	74.8%
Canvas Office Landscape Metal Storage	74.8%
Canvas Office Landscape Private Office	74.8%
Canvas Office Landscape Wood Storage	74.8%
Canvas Office Landscape Vista	74.8%
Canvas Office Landscape Wall	74.8%
Caper	61.5%
Commend Nurses Station	73.3%
Cosm	61.7%
Eames® Aluminum Group	58.7%
Eames Conference & Dining Tables	73.6%
Easton Family	54.91%
Embody	59.7%
Energy Distribution Systems	73.8%
Ethospace System	73.8%
Everywhere™ Tables	73.8%
Exclave	61.7%

Contract Information

continued

Fuld	59.7%
Headway™ Tables	73.8%
Intent Solution	58.7%
Layout Studio®	60.7%
Lighting	73.8%
Lino	63.7%
Meridian Laterals	67.3%
Meridian Pedestals	64.2%
Meridian Towers	62.7%
Meridian Storage	62.7%
Mirra 2	61.7%
Motia Tables	73.8%
NaughtOne	50.0%
Nemschoff	54.91%
Nevi™ Tables	73.8%
Nevi Link	73.8%
OE1 Boundary	72.8%
OE1 Community Elements	61.7%
OE1 Micro Packs	73.8%
OE1 Storage	72.8%
OE1 Tables and Benching	73.8%
Overlay™	62.7%
Plex® Lounge Furniture	59.5%
Pronta Stacking Chair	57.7%
Public Office Landscape	61.7%
Renew™ Tables	73.8%
Renew Link	73.8%
Sayl	62.2%
Setu	59.7%
Swoop Lounge Furniture	60.7%
Thrive Portfolio	62.0%
Thrive Portfolio-CBS Products Extension	62.0%
Tu Lateral Files	74.3%
Tu Pedestals	73.8%
Tu Storage	74.3%
Tu Towers	74.3%
Tu Wood Cases	74.3%
Tu Wood Cubbies	74.3%
Tu Wood Credenzas	74.3%
Tu Wood Pedestals	74.3%
Tu Wood Towers	74.3%
Valor™ Family	54.91%
Verus	63.7%
Zeph	60.2%

Services

Please refer to section 19 for Terms and Conditions of Installation/ Reconfiguration and Relocation Services.

Project Management

Services under this SIN may be used only in conjunction with the purchase of new furniture. Please contact your local MillerKnoll Inc. representative to discuss the available labor categories (listed below). The hourly rates listed are “Not To Exceed” or “NTE” values.

Furniture Project Manager: \$64.75 per hour  
Furniture Project Coordinator: \$49.00 per hour  
Build-Out Project Manager: \$80.00 per hour

Reconfiguration and Relocation Services

Reconfiguration and Relocation Services will be provided by MillerKnoll Inc. or its participating dealer based on a fee not to exceed \$55 per hour.

See \* Additional Notes for Installation & Reconfiguration and Relocation Services.

Design/Layout

Design service will be provided by MillerKnoll Inc. or its participating dealer based on a fee not to exceed \$65 per hour.

Installation Services

Installation Services will be provided by MillerKnoll Inc. or its participating dealer based on a fee not to exceed \$55 per hour (\$82.50 per hour for after-hours Installation).

See \* Additional Notes for Installation & Reconfiguration and Relocation Services.

SIN 337127

Standard Lead Time, Single Order Net Purchase \$100 - 250,000, includes approved Herman Miller Options Products.

Product Line	Discount From List
Action Lab	58.5%
Compass System	58.5%
Co/Struc System	58.5%
Healthcare Carts	18.0%
Mora System	58.5%
Bedside Cabinets	58.5%

SIN 33721P

Packaged Office Furniture - Maximum Order \$250,000 (net).

Includes packaged furniture solutions for customers needing to furnish an office.

SIN 339113H

Standard Lead Time, Single Order Net Purchase \$100 - 500,000, includes approved Herman Miller Options Products.

Product Line	Discount From List
Nemschoff Healthcare Furniture	54.91%

7. Quantity Discounts

Reference item #6.

8. Payment Terms

Net 30 days

9. Foreign Items

None

10. Time of Delivery

- a. 90 day ARO
- b. Expedited delivery: Items listed in the 10-Day section of the catalogs are available for expedited delivery.
- c. Overnight/2-day delivery: Select items may be available for overnight or 2-day delivery. Contact MillerKnoll Inc. or a participating dealer for availability and rates.
- d. Urgent requirements: Agencies may contact contractor or participating dealer to request faster delivery.

# Contract Information

*continued*

## 11. F.O.B.

F.O.B. destination except Alaska, Hawaii, and Puerto Rico, which will be shipped F.O.B. inland carrier point of exportation.

## 12. Ordering Address

a. MillerKnoll Inc.

Government Customer Care 0161  
855 East Main Avenue  
Zeeland MI 49464.

b. For supplies and services, the ordering procedures information on Blanket Purchase Agreements (BPA's) are found in Federal Acquisition Regulation (FAR) 8.405-3.

## 13. Payment Address.

MillerKnoll Inc.  
22764 Network Place  
Chicago, IL 60673-1227

## 14. Warranty

MillerKnoll Inc. commercial warranty applies.

## 15. Export Packing Charge

Prices supplied on request.

## 16. Rental Maintenance and Repair Terms

Not applicable

## 17. Terms and Conditions of Installation/Reconfiguration and Relocation Services

\* Additional Notes for Installation & Reconfiguration and Relocation Services:

FOB Destination (Drop Ship): Price includes product delivery to the site, brought to the tailgate of the truck. The purchaser is responsible for unloading.

Prices effective up to the maximum order by SIN only. Above the MO, pricing shall be negotiated on a case-by-case basis between the client and local dealer.

Standard Services are Subject to the Following Conditions:

Installation will be performed during normal weekday working hours.

Adequate facilities for delivery, unloading, moving and staging/storing the product during the installation process shall be provided.

Service work will not be hindered by other trades.

Electric, heat, and adequate elevator service will be furnished without charge.

The immediate installation area shall be complete and free of debris including the carpet/flooring before installation commences.

Any work requiring a licensed electrician is the responsibility of the buyer.

Additional Charges May Apply For:

Major Metro Markets and any non-ground floor installation.

Major Metro Markets include large population centers and urban environments.

Installation in a clinical/medical environment.

Special restrictions or limits established by local laws, ordinances or the directions of the buyer, including but not limited to restrictions on transportations of materials, street access to the job site and/or dock facilities.

Installations outside of a 50 mile radius of the servicing dealer.

Local Prevailing Wage and/or Union Labor Rates.

Any additional charges shall be quoted by the dealer and approved by the buyer prior to performance of the work.

## 18. Terms and Conditions of Repair Parts

Not applicable

## 19. Service and Distribution Points

For service and distribution points nearest you, call (800) 851 1196.

## 20. Participating Dealers

Access Herman Miller web site for current list of participating dealers: [www.HermanMiller.com/where-to-buy/contact-a-dealer/](http://www.HermanMiller.com/where-to-buy/contact-a-dealer/). Select your market by using the filter.

## 21. Preventive Maintenance

Not applicable

## 22a. Special Attributes.

2022

MillerKnoll earns its 15th consecutive perfect score in Human Rights Campaign Foundation's 2022 Corporate Equality Index.

2021

The OE1 Trolley and Micro Packs are both winners of the 2021 Archiproducts international design competition in the Office Category.

MillerKnoll is named to Michigan's Best and Brightest in Wellness List for 2021.

MillerKnoll is awarded Platinum Rating in CSR by EcoVadis.

OE1 is named winner of Wallpaper's "Most Futuristic Furniture" Category as part of their first-ever Smart Space Awards.

OE1 receives the Workplace category award from Fast Company's 2021 Innovation by Design Awards.

MillerKnoll is named to Fast Company's Annual List of the World's Most Innovative Companies for 2021.

MillerKnoll is recognized as a "Disclosure Leader" by the Chemical Footprint Project (CFP).

# Contract Information

*continued*

MillerKnoll earns its 14th consecutive perfect score in Human Rights Campaign Foundation's 2021 Corporate Equality Index.

MillerKnoll is named to Newsweek's List of America's Most Responsible Companies 2021.

Great Lakes Women's Business Council awards MillerKnoll for "Excellence in Supplier Diversity" in the Best In Class category.

2020

Herman Miller is recognized with a 2020 FSC® Leadership Award for our commitment to responsible forestry management.

Herman Miller is named one of Investor's Business Daily Top 50 Best ESG (Environmental, Social, and Corporate Governance) Companies.

Working Mother names Herman Miller as one of the Best Companies for Dads.

Herman Miller is awarded Platinum Rating in CSR by EcoVadis.

Herman Miller is named Diversity Inc 2020 Noteworthy Company for recruitment efforts, employee development opportunities, leadership accountability, and supplier diversity.

Cosm, by Studio 7.5, receives an iF Gold Award in the Office and Industry category at the iF World Design Awards 2020.

Herman Miller earns its 13th consecutive perfect score in Human Rights Campaign Foundation's 2020 Corporate Equality Index.

2019

Mora System casework, designed by Collective Ten for Herman Miller, receives silver in the Industrial and Life Science Design/Medical Furniture category at the European Product Design Awards.

Mora System casework is awarded GOOD DESIGN Award 2019, selected for design excellence and innovation.

National Minority Supplier Diversity Council (NMSDC) names Herman Miller as the 2019 Class 1 Corporation of the Year for leadership in supplier diversity.

TIME Magazine names Cosm to its list of 100 Best Inventions of 2019.

Herman Miller is named #12 Overall and #2 in Manufacturing on Investor's Business Daily Best ESG (Environmental, Social, Governance) Companies.

Herman Miller is recognized as a silver level Certified Veteran-Friendly Employer by the Michigan Veterans Affairs Agency for a commitment to veteran hiring, retention, and development.

For the second year in a row, Herman Miller receives a Gold Medal from EcoVadis in recognition of Corporate Social Responsibility achievement measured in categories of environment, labor and human rights, ethics, and sustainable procurement.

Herman Miller is named "Frontrunner" in Chemical Footprint Project by Clean Production Action for our chemical management policies and practices.

Herman Miller receives International Interior Design Association and Contract's best showroom design award in the "Large Showroom" category at NeoCon.

Herman Miller earns its 12th consecutive perfect score in Human Rights Campaign Foundation's 2019 Corporate Equality Index.

Cosm, designed by Studio 7.5 for Herman Miller, receives a Red Dot Best of the Best Product Design Award in the "Office Chairs" category.

Lino, designed by Sam Hecht and Kim Colin for Herman Miller, receives an iF Design Award in the Product Design category.

2018

Overlay, designed by Birsell+Seck, receives Interior Design Best of Year Award in the Partitions and Wall Systems category.

Herman Miller receives the "Corporation of the Year" in consumer products award from the Michigan Minority Supplier Development Council.

Herman Miller achieves the Advanced Excellence in Supplier Diversity Award from the Great Lakes Women's Business Council for doing business with women-owned suppliers.

Great Lakes Women's Business Council awards Herman Miller for "Excellence in Supplier Diversity" in the Advanced category.

WEConnect awards Herman Miller an Honorable Mention for global supplier diversity initiatives.

As one of the top-scoring companies in the industry for the 14th consecutive year, Herman Miller has qualified for inclusion in RobecoSAM's 2018 Sustainability Yearbook and receives the Silver Class distinction for excellent sustainability performance—economic, environmental, and social.

For the 11th consecutive year, Herman Miller receives a perfect score on the Human Rights Campaign Foundation's Corporate Equality Index and is designated as Best Place to Work for LGBT equality. This report evaluates U.S. companies in terms of diversity, particularly LGBT-related policies and practices.

# Contract Information

*continued*

Herman Miller receives Gold Medal from EcoVadis in recognition of Corporate Social Sustainability achievement measured in categories of environment, labor and human rights, ethics, and sustainable procurement. EcoVadis operates the first web-based collaborative platform that allows companies to assess the environmental and social performance of their global suppliers.

Aeron receives Good Design Award from The Chicago Athenaeum Museum of Architecture and Design.

The Cosm Chair wins Mix Interiors "Product of the Year—Task" award.

2017

Herman Miller receives "Rising Star Award" from the Michigan Veterans Affairs Agency (MVAA) for exhibiting new and novel approaches to veteran recruitment and hiring.

Herman Miller is named the 2017 "Corporation of the Year" in the consumer products sector by the Michigan Minority Supplier Development Council (MMSDC).

Herman Miller receives a 2017 SEAL (Sustainability, Environmental Achievement and Leadership) Business Sustainability Award. SEAL Award winners are determined by a holistic methodology measuring applicants against established benchmarks that demonstrate impact and progress toward creating a healthy planet and a sustainable future.

Herman Miller earns the 4 Star Diversity Visionary Award. This award celebrates the diversity, equality, and inclusion work of Herman Miller. The award is presented at the annual Diversity Equity Inclusion Summit, held by the Grand Rapids Area Chamber of Commerce.

Herman Miller is named one of the Best and Brightest in Wellness for the 5th year in a row.

Herman Miller earns its 10th consecutive perfect score in Human Rights Campaign Foundation's 2017 Corporate Equality Index.

As one of the top-scoring companies in the industry for the 13th consecutive year, Herman Miller has qualified for inclusion in RobecoSAM's 2017 Sustainability Yearbook and receives the Bronze Class distinction for excellent economic, environmental, and social sustainability performance. The selection criteria for inclusion in the Yearbook becomes more rigorous each year, and only the top 15 percent of companies within each industry are selected.

Herman Miller once again earns the WorldatWork Seal of Distinction, a unique standard of excellence in work-life effectiveness that shows we provide a distinct, mutually beneficial workplace experience. Herman Miller is the only furniture manufacturer among the 160 companies across the U.S. and Canada honored with the award.

Herman Miller's Mora wins Nightingale Silver Award in the "Furniture Collections" category at the 2017 Healthcare Design Conference.

2016

Herman Miller earns 9th consecutive perfect score in Human Rights Campaign Foundation's Corporate Equality Index and is designated as Best Place to Work for LGBT equality.

Herman Miller is recognized as the Business of the Year at the Annual Meeting of the West Michigan Environmental Action Council (WMEAC) for being an outstanding partner in support of the growth of WMEAC's programs. WMEAC's award goes to the business with the greatest depth and breadth of support, unwavering dedication to environmental action in West Michigan, and a strong corporate commitment to environmental advocacy.

The 101 Best and Brightest Sustainable Companies once again (5th consecutive year) recognizes Herman Miller as an organization in Michigan (and for the first time, in the nation) that exhibits leadership and innovation in its approach to sustainability. This award celebrates those companies that are making their businesses more sustainable, the lives of their employees better, and the community, both locally and globally, more responsible as a whole.

Herman Miller is recognized by the Michigan Minority Supplier Development Council (MMSDC) as a "Corporation of the Year". Additionally, we are the only West Michigan company this year to receive an "Ambassadors Championing Excellence" Award from the MMSDC.

Herman Miller is recognized with "2016 Excellence in Supplier Diversity Award" from the Great Lakes Women's Business Council.

Herman Miller is recognized as a 2016 Healthiest 100 Workplace in America, ranking 49th in the country for our commitment to health and exceptional corporate wellness programming.

Herman Miller receives the Best and Brightest in Wellness Award for the 4th year in a row. This program is an innovative initiative that recognizes and celebrates quality and excellence in health awareness.

The Michigan Occupational Safety and Health Administration renews Herman Miller's "Star" status, the highest workplace safety and health designation, for the Hickory facility in Spring Lake.

Plex Lounge Furniture from Herman Miller receives #MetropolisLikes award at NeoCon 2016.

Plex Lounge Furniture from Herman Miller receives Interior Design HiP Award for Workplace Seating/Lounge at NeoCon 2016.

Herman Miller is named a 2016 Women on Boards Winning Company. Companies selected for this recognition are considered champions of board diversity as 20 percent or more of their board seats are occupied by women.

Herman Miller is selected for inclusion in the 2016 RobecoSAM Sustainability Yearbook for the 12th consecutive year.

Herman Miller again earns the WorldatWork Work-Life 2016 Seal of Distinction. This award identifies organizations that focus on programs that promote work-life balance and overall well-being.

# Contract Information

*continued*

## **22b. Section 508 Compliance**

Not applicable

## **23. Unique Entity ID:** Q2K3MSZ843D8

## **24. Registered in System for Award Management ([www.SAM.gov](http://www.SAM.gov)) Database**

## **25. Cancellation**

Prior to production, no cancellation charge will apply. After production, only actual cost incurred that the contractor can demonstrate if items are sold after 3 months.

## **26. Restocking Charges**

Agencies must notify the contractor for authorization prior to returning any items. The customer agency will be required to pay all packaging and return freight charges. A restocking fee of 50% for Systems Furniture and 35% for all other product lines will be charged for any returned items.

Returns and restocking policy is not applicable to Options products, products under SIN 337127, 339113H, NaughtOne and Nemschoff products.

## **MillerKnoll Inc. Miscellaneous Information:**

Federal ID Number: 38-0837640

Commercial and Government Entity Code (CAGE): 40636

Data Universal Numbering System (DUNS) 00-601-2801

Commercial Entity Code (CEC): 00702290J



<b>Introduction</b>	<b>page 2</b>
<b>Nemschoff® Brava Collection</b>	<b>3</b>
Brava Classic	5
Brava Platform	31
Brava Occasional and Overbed Tables	49
<b>Indices</b>	<b>61</b>
By Name	61
By Number	63
<b>Appendices</b>	
20-Day or Less/Assigned Lead-Time Order Information	
Multiple Fabrics Guide	

**A Note on the Organization of This Book**

There are a few signals that will help you understand the organization of this book. Once you know them, you should be able to find your way around easily.

**Like a newspaper, this book is formatted with columns of text and illustrations that run vertically.**

Information wraps from one column to the next and continues for as many pages as it needs to.

**Black bars are clues.**

A black bar at the top of a page signals the start of information about a product.

This information is divided into two sections, each signaled by a black bar. Product Information includes a description, additional notes, and dimensional drawings. Specification Information, which always begins at the top of a column, includes a series of steps. Each step represents a decision you need to make in order to complete your product number. Steps must be followed sequentially. The number of pages needed to complete information on a product varies; some will be complete in one page; others may fill three or four pages. Just continue going through the steps until you run into the next product, signaled by the black bar at the top of the page.

Black tabs running along the outside edge of the page help you locate what section you are in or what section you want to go to. You can thumb forwards or backwards to find a section; tabs and text appear on both sides of the page.

The additional pages in the back of the book include the appendices and indices. They are signaled by a long black bar running along the outside edge of the page.

**The index is presented two ways.**

The first index is in alphabetical order by product name. It can be helpful if you are new to the products and numbering scheme or if you are looking for a type of product, such as work chair or round table.

The second index is by product number. It lists, in alphanumeric order, the base product number, typically a five-digit number.

**General Information**

This book is effective October 7, 2024, subject to change without notice. Products may be purchased from authorized Herman Miller dealers who will quote prices upon request. For more information about our products and services or to see a list of dealers, visit [www.HermanMiller.com](http://www.HermanMiller.com).


All prices are list prices. Additional services, such as planning services, design, storage, and installation, are not included and must be added to these prices when the additional services are requested.


Illustrations, specifications, and prices are based on the latest information at the time of publication. The right is reserved to make changes at any time without notice in prices, fabrics, finishes, materials, specifications, and models, and also to discontinue models and finishes.

Dimensions shown in the drawings are engineering drawing dimensions rounded up to the nearest 1/8". Product is shipped set up or knocked down. Products that include "Shipped knocked down" in the description require some assembly. If this statement does not appear in the description, the product is shipped assembled.

Service problems are normally handled by a Herman Miller authorized dealer. Where this cannot be accomplished on a local level, service problems should be referred to the Customer Care Representative for your region, Herman Miller, Inc., Zeeland, Michigan 49464.

**20-Day or Less/Assigned Lead-Time Shipments**

All products and options in this price book not designated by an Assigned Program icon  will ship in **20 business days or less** after being acknowledged by Herman Miller.

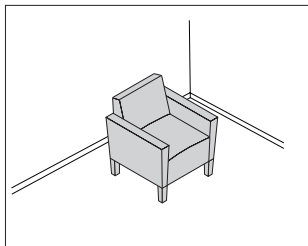
Products and options designated by an  are on the assigned lead-time program and may ship in 20 days, less than 20 days, or more than 20 days from order acknowledgement.

Brava Classic

Brava Platform

Brava Occasional & Overbed Tables





### Product Information

#### Description

##### Features:

- Solid maple frame
- Mortise and tenon joinery
- Spring seat construction
- Clean-out design
- Replaceable components
- Upholstered arms
- Non-marring 7/8" rubber-cushioned glides
- Nemschoff® healthcare wood finish
- Indoor Advantage™ Gold Certified

#### Notes

Weight—48 lbs

COM yardage:

Single Fabric—4½

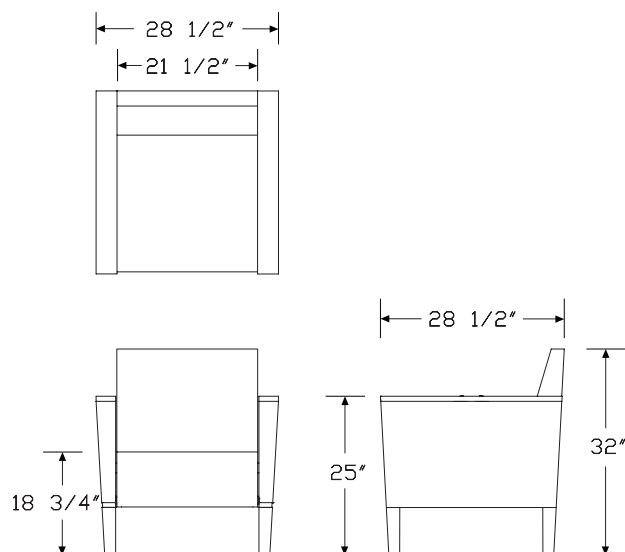
Multiple Fabrics:

Seat—1½

Back—1¾

Arms—3

#### Dimensions



### Specification Information

#### Step 1.

861-10 ☐

#### Step 2. Size

-1 28.5" wide ☐ +\$2837

#### Step 3. Covers

S standard covers ☐ +\$0

P removable covers ☐ +\$345

#### Step 4. Arm with Literature Storage

N no literature storage ☐ +\$0

#### Step 5. Fire Retardancy

NR not fire retardant (non CTB-133) ☐ +\$0

#### Step 6. Fabric Configuration

1F one fabric ☐ +\$0

MF multiple fabrics ☐ +\$127

#### Step 7. Arm Cap Detail

K solid surface arm caps ☐ +\$0

U upholstered arms ☐ +\$0

W wood arm caps ☐ +\$124

R urethane arm caps ☐ +\$0

#### Step 8. Arm Cap Finish

##### For urethane arm caps (R)

BK black ☐ +\$124

PW pewter ☐ +\$226

##### For wood arm caps (W)

SF same as chair frame finish ☐ +\$0

##### For upholstered arms (U)

SU same as chair arm upholstery ☐ +\$0

##### For solid surface arm caps (K)

58 cameo white ☐ +\$375

ANC antarctica ☐ +\$425

CQ glacier white ☐ +\$375

QB bisque ☐ +\$375

SVG silver gray ☐ +\$425

# Brava Classic Chair, 28.5" Wide

continued

Nemschoff® Brava Classic

Step 9. Wood Finish		
<b>0Z</b>	medium cherry <input type="checkbox"/>	+\$0
<b>2U</b>	light brown walnut <input type="checkbox"/>	+\$0
<b>40</b>	dark brown walnut <input type="checkbox"/>	+\$0
<b>5K</b>	honey maple <input type="checkbox"/>	+\$0
<b>ED</b>	aged cherry <input type="checkbox"/>	+\$0
<b>IZ</b>	aged teak <input type="checkbox"/>	+\$0
<b>UL</b>	natural maple <input type="checkbox"/>	+\$0

Step 10. Moisture Barrier Option		
<b>MBN</b>	no moisture barrier <input type="checkbox"/>	+\$0
<b>MBB</b>	moisture barrier back only <input type="checkbox"/>	+\$75
<b>MBS</b>	moisture barrier seat only <input type="checkbox"/>	+\$75
<b>MBX</b>	moisture barrier seat and back <input type="checkbox"/>	+\$150

Step 11. MicrobeCare Selection		
<b>MCN</b>	no MicrobeCare protection <input type="checkbox"/>	+\$0
<b>MCY</b>	MicrobeCare protection <input type="checkbox"/>	+\$50

## Step 12.

### Fabric

*For not fire retardant (non CTB-133) (NR) with one fabric (1F)*

Price Category (Nemschoff) Series 3 <input type="checkbox"/>	+\$0
Price Category (Nemschoff) Series 4 <input type="checkbox"/>	+\$261
Price Category (Nemschoff) Series 5 <input type="checkbox"/>	+\$534
Price Category (Nemschoff) Series 6 <input type="checkbox"/>	+\$859
Price Category (Nemschoff) Series 7 <input type="checkbox"/>	+\$1186
Price Category (Nemschoff) Series 8 <input type="checkbox"/>	+\$1596

### Seat Fabric

*For not fire retardant (non CTB-133) (NR) with multiple fabrics (MF)*

Price Category (Nemschoff) Series 3 <input type="checkbox"/>	+\$0
Price Category (Nemschoff) Series 4 <input type="checkbox"/>	+\$86
Price Category (Nemschoff) Series 5 <input type="checkbox"/>	+\$164
Price Category (Nemschoff) Series 6 <input type="checkbox"/>	+\$257
Price Category (Nemschoff) Series 7 <input type="checkbox"/>	+\$352
Price Category (Nemschoff) Series 8 <input type="checkbox"/>	+\$469

## Step 13. Back Fabric

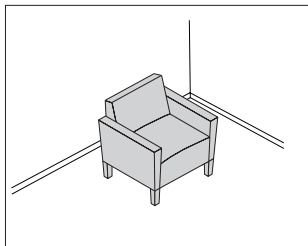
*For not fire retardant (non CTB-133) (NR) with multiple fabrics (MF)*

Price Category (Nemschoff) Series 3 <input type="checkbox"/>	+\$0
Price Category (Nemschoff) Series 4 <input type="checkbox"/>	+\$107
Price Category (Nemschoff) Series 5 <input type="checkbox"/>	+\$205
Price Category (Nemschoff) Series 6 <input type="checkbox"/>	+\$320
Price Category (Nemschoff) Series 7 <input type="checkbox"/>	+\$441
Price Category (Nemschoff) Series 8 <input type="checkbox"/>	+\$589

## Step 14. Arm Fabric

*For not fire retardant (non CTB-133) (NR) with multiple fabrics (MF)*

Price Category (Nemschoff) Series 3 <input type="checkbox"/>	+\$0
Price Category (Nemschoff) Series 4 <input type="checkbox"/>	+\$179
Price Category (Nemschoff) Series 5 <input type="checkbox"/>	+\$344
Price Category (Nemschoff) Series 6 <input type="checkbox"/>	+\$540
Price Category (Nemschoff) Series 7 <input type="checkbox"/>	+\$737
Price Category (Nemschoff) Series 8 <input type="checkbox"/>	+\$988



### Product Information

#### Description

##### Features:

- Solid maple frame
- Mortise and tenon joinery
- Spring seat construction
- Clean-out design
- Replaceable components
- Upholstered arms
- Non-marring  $\frac{7}{8}$ " rubber-cushioned glides
- Nemschoff® healthcare wood finish
- Indoor Advantage™ Gold Certified

#### Notes

Weight—50 lbs

COM yardage:

Single Fabric—4½

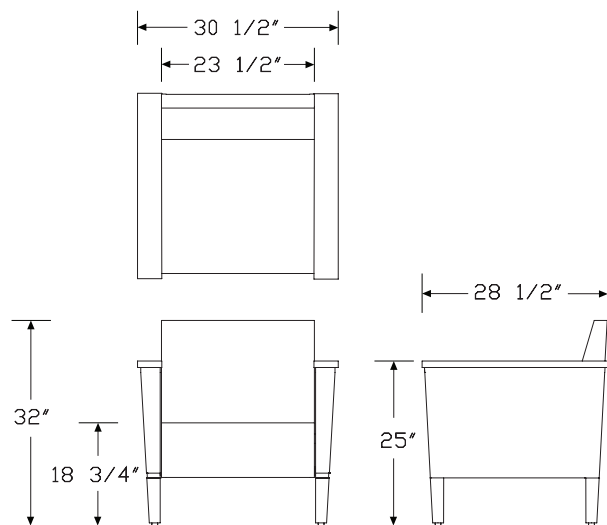
Multiple Fabrics:

Seat—1½

Back—1¾

Arms—3

#### Dimensions



### Specification Information

#### Step 1.

861-10 ☐

#### Step 2. Size

-2 30.5" wide ☐ +\$2837

#### Step 3. Covers

S standard covers ☐ +\$0  
P removable covers ☐ +\$345

#### Step 4. Arm with Literature Storage

N no literature storage ☐ +\$0

#### Step 5. Fire Retardancy

NR not fire retardant (non CTB-133) ☐ +\$0

#### Step 6. Fabric Configuration

1F one fabric ☐ +\$0  
MF multiple fabrics ☐ +\$127

#### Step 7. Arm Cap Detail

K solid surface arm caps ☐ +\$0  
U upholstered arms ☐ +\$0  
W wood arm caps ☐ +\$124  
R urethane arm caps ☐ +\$0

#### Step 8. Arm Cap Finish

##### For urethane arm caps (R)

BK black ☐ +\$124  
PW pewter ☐ +\$226

##### For wood arm caps (W)

SF same as chair frame finish ☐ +\$0

##### For upholstered arms (U)

SU same as chair arm upholstery ☐ +\$0

##### For solid surface arm caps (K)

58 cameo white ☐ +\$375  
ANC antarctica ☐ +\$425  
CQ glacier white ☐ +\$375  
QB bisque ☐ +\$375  
SVG silver gray ☐ +\$425

# Brava Classic Chair, 30.5" Wide

continued

Nemschoff® Brava Classic

Step 9. Wood Finish		
<b>0Z</b>	medium cherry <input type="checkbox"/>	+\$0
<b>2U</b>	light brown walnut <input type="checkbox"/>	+\$0
<b>40</b>	dark brown walnut <input type="checkbox"/>	+\$0
<b>5K</b>	honey maple <input type="checkbox"/>	+\$0
<b>ED</b>	aged cherry <input type="checkbox"/>	+\$0
<b>IZ</b>	aged teak <input type="checkbox"/>	+\$0
<b>UL</b>	natural maple <input type="checkbox"/>	+\$0

Step 10. Moisture Barrier Option		
<b>MBN</b>	no moisture barrier <input type="checkbox"/>	+\$0
<b>MBB</b>	moisture barrier back only <input type="checkbox"/>	+\$75
<b>MBS</b>	moisture barrier seat only <input type="checkbox"/>	+\$75
<b>MBX</b>	moisture barrier seat and back <input type="checkbox"/>	+\$150

Step 11. MicrobeCare Selection		
<b>MCN</b>	no MicrobeCare protection <input type="checkbox"/>	+\$0
<b>MCY</b>	MicrobeCare protection <input type="checkbox"/>	+\$50

## Step 12.

### Fabric

*For not fire retardant (non CTB-133) (NR) with one fabric (1F)*

Price Category (Nemschoff) Series 3 <input type="checkbox"/>	+\$0
Price Category (Nemschoff) Series 4 <input type="checkbox"/>	+\$261
Price Category (Nemschoff) Series 5 <input type="checkbox"/>	+\$534
Price Category (Nemschoff) Series 6 <input type="checkbox"/>	+\$859
Price Category (Nemschoff) Series 7 <input type="checkbox"/>	+\$1186
Price Category (Nemschoff) Series 8 <input type="checkbox"/>	+\$1596

### Seat Fabric

*For not fire retardant (non CTB-133) (NR) with multiple fabrics (MF)*

Price Category (Nemschoff) Series 3 <input type="checkbox"/>	+\$0
Price Category (Nemschoff) Series 4 <input type="checkbox"/>	+\$86
Price Category (Nemschoff) Series 5 <input type="checkbox"/>	+\$164
Price Category (Nemschoff) Series 6 <input type="checkbox"/>	+\$257
Price Category (Nemschoff) Series 7 <input type="checkbox"/>	+\$352
Price Category (Nemschoff) Series 8 <input type="checkbox"/>	+\$469

## Step 13. Back Fabric

*For not fire retardant (non CTB-133) (NR) with multiple fabrics (MF)*

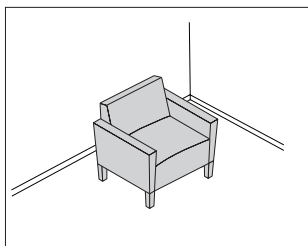
Price Category (Nemschoff) Series 3 <input type="checkbox"/>	+\$0
Price Category (Nemschoff) Series 4 <input type="checkbox"/>	+\$107
Price Category (Nemschoff) Series 5 <input type="checkbox"/>	+\$205
Price Category (Nemschoff) Series 6 <input type="checkbox"/>	+\$320
Price Category (Nemschoff) Series 7 <input type="checkbox"/>	+\$441
Price Category (Nemschoff) Series 8 <input type="checkbox"/>	+\$589

## Step 14. Arm Fabric

*For not fire retardant (non CTB-133) (NR) with multiple fabrics (MF)*

Price Category (Nemschoff) Series 3 <input type="checkbox"/>	+\$0
Price Category (Nemschoff) Series 4 <input type="checkbox"/>	+\$179
Price Category (Nemschoff) Series 5 <input type="checkbox"/>	+\$344
Price Category (Nemschoff) Series 6 <input type="checkbox"/>	+\$540
Price Category (Nemschoff) Series 7 <input type="checkbox"/>	+\$737
Price Category (Nemschoff) Series 8 <input type="checkbox"/>	+\$988





### Product Information

#### Description

##### Features:

- Solid maple frame
- Mortise and tenon joinery
- Spring seat construction
- Clean-out design
- Replaceable components
- Upholstered arms
- Non-marring  $\frac{7}{8}$ " rubber-cushioned glides
- Nemschoff® healthcare wood finish
- Indoor Advantage™ Gold Certified

#### Notes

Weight—52 lbs

COM yardage:

Single Fabric—6

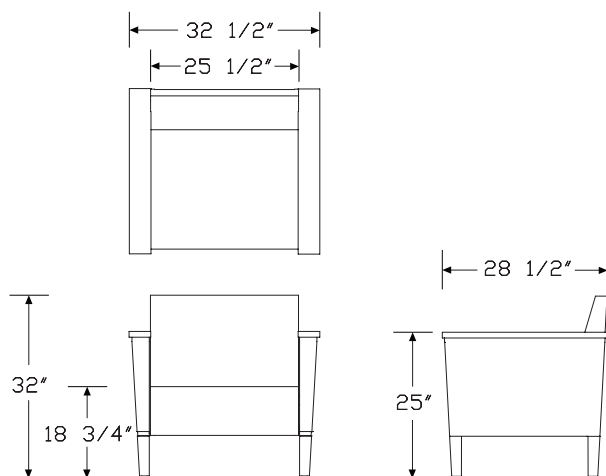
Multiple Fabrics:

Seat—1 $\frac{3}{4}$

Back—2

Arms—3

#### Dimensions



### Specification Information

#### Step 1.

861-10 ☐

#### Step 2. Size

-3 32.5" wide ☐ +\$2873

#### Step 3. Covers

S standard covers ☐ +\$0

P removable covers ☐ +\$348

#### Step 4. Arm with Literature Storage

N no literature storage ☐ +\$0

#### Step 5. Fire Retardancy

NR not fire retardant (non CTB-133) ☐ +\$0

#### Step 6. Fabric Configuration

1F one fabric ☐ +\$0

MF multiple fabrics ☐ +\$127

#### Step 7. Arm Cap Detail

K solid surface arm caps ☐ +\$0

U upholstered arms ☐ +\$0

W wood arm caps ☐ +\$124

R urethane arm caps ☐ +\$0

#### Step 8. Arm Cap Finish

##### For urethane arm caps (R)

BK black ☐ +\$124

PW pewter ☐ +\$226

##### For wood arm caps (W)

SF same as chair frame finish ☐ +\$0

##### For upholstered arms (U)

SU same as chair arm upholstery ☐ +\$0

##### For solid surface arm caps (K)

58 cameo white ☐ +\$375

ANC antarctica ☐ +\$425

CQ glacier white ☐ +\$375

QB bisque ☐ +\$375

SVG silver gray ☐ +\$425

# Brava Classic Chair, 32.5" Wide

continued

Nemschoff® Brava Classic

Step 9. Wood Finish		
<b>0Z</b>	medium cherry <input type="checkbox"/>	+\$0
<b>2U</b>	light brown walnut <input type="checkbox"/>	+\$0
<b>40</b>	dark brown walnut <input type="checkbox"/>	+\$0
<b>5K</b>	honey maple <input type="checkbox"/>	+\$0
<b>ED</b>	aged cherry <input type="checkbox"/>	+\$0
<b>IZ</b>	aged teak <input type="checkbox"/>	+\$0
<b>UL</b>	natural maple <input type="checkbox"/>	+\$0

Step 10. Moisture Barrier Option		
<b>MBN</b>	no moisture barrier <input type="checkbox"/>	+\$0
<b>MBB</b>	moisture barrier back only <input type="checkbox"/>	+\$75
<b>MBS</b>	moisture barrier seat only <input type="checkbox"/>	+\$75
<b>MBX</b>	moisture barrier seat and back <input type="checkbox"/>	+\$150

Step 11. MicrobeCare Selection		
<b>MCN</b>	no MicrobeCare protection <input type="checkbox"/>	+\$0
<b>MCY</b>	MicrobeCare protection <input type="checkbox"/>	+\$50

## Step 12.

### Fabric

*For not fire retardant (non CTB-133) (NR) with one fabric (1F)*

Price Category (Nemschoff) Series 3 <input type="checkbox"/>	+\$0
Price Category (Nemschoff) Series 4 <input type="checkbox"/>	+\$348
Price Category (Nemschoff) Series 5 <input type="checkbox"/>	+\$713
Price Category (Nemschoff) Series 6 <input type="checkbox"/>	+\$1144
Price Category (Nemschoff) Series 7 <input type="checkbox"/>	+\$1582
Price Category (Nemschoff) Series 8 <input type="checkbox"/>	+\$2129

### Seat Fabric

*For not fire retardant (non CTB-133) (NR) with multiple fabrics (MF)*

Price Category (Nemschoff) Series 3 <input type="checkbox"/>	+\$0
Price Category (Nemschoff) Series 4 <input type="checkbox"/>	+\$116
Price Category (Nemschoff) Series 5 <input type="checkbox"/>	+\$232
Price Category (Nemschoff) Series 6 <input type="checkbox"/>	+\$370
Price Category (Nemschoff) Series 7 <input type="checkbox"/>	+\$507
Price Category (Nemschoff) Series 8 <input type="checkbox"/>	+\$682

## Step 13. Back Fabric

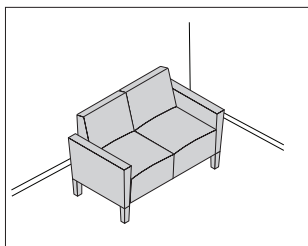
*For not fire retardant (non CTB-133) (NR) with multiple fabrics (MF)*

Price Category (Nemschoff) Series 3 <input type="checkbox"/>	+\$0
Price Category (Nemschoff) Series 4 <input type="checkbox"/>	+\$150
Price Category (Nemschoff) Series 5 <input type="checkbox"/>	+\$296
Price Category (Nemschoff) Series 6 <input type="checkbox"/>	+\$468
Price Category (Nemschoff) Series 7 <input type="checkbox"/>	+\$644
Price Category (Nemschoff) Series 8 <input type="checkbox"/>	+\$866

## Step 14. Arm Fabric

*For not fire retardant (non CTB-133) (NR) with multiple fabrics (MF)*

Price Category (Nemschoff) Series 3 <input type="checkbox"/>	+\$0
Price Category (Nemschoff) Series 4 <input type="checkbox"/>	+\$179
Price Category (Nemschoff) Series 5 <input type="checkbox"/>	+\$350
Price Category (Nemschoff) Series 6 <input type="checkbox"/>	+\$558
Price Category (Nemschoff) Series 7 <input type="checkbox"/>	+\$768
Price Category (Nemschoff) Series 8 <input type="checkbox"/>	+\$1029



### Product Information

#### Description

##### Features:

- Solid maple frame
- Mortise and tenon joinery
- Spring seat construction
- Clean-out design
- Replaceable components
- Upholstered arms
- Non-marring  $\frac{7}{8}$ " rubber-cushioned glides
- Nemschoff® healthcare wood finish
- Indoor Advantage™ Gold Certified

#### Notes

Weight—74 lbs

COM yardage:

Single Fabric—6½

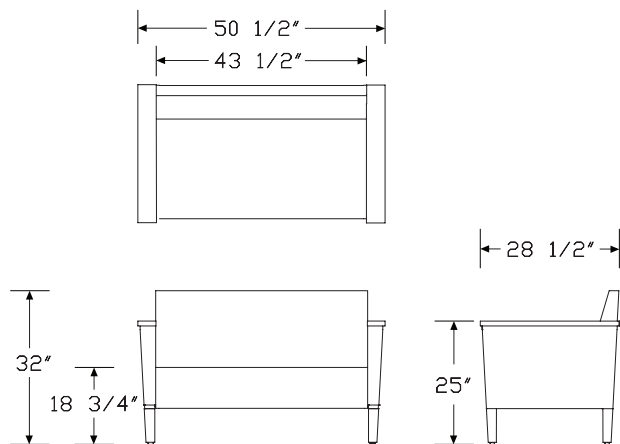
Multiple Fabrics:

Seat—3

Back—3½

Arms—3

#### Dimensions



### Specification Information

#### Step 1.

861-20 ☐

#### Step 2. Size

-1 50.5" wide ☐ +\$4682

#### Step 3. Covers

S standard covers ☐ +\$0

P removable covers ☐ +\$564

#### Step 4. Arm with Literature Storage

N no literature storage ☐ +\$0

#### Step 5. Fire Retardancy

NR not fire retardant (non CTB-133) ☐ +\$0

#### Step 6. Fabric Configuration

1F one fabric ☐ +\$0

MF multiple fabrics ☐ +\$127

#### Step 7. Arm Cap Detail

K solid surface arm caps ☐ +\$0

U upholstered arms ☐ +\$0

W wood arm caps ☐ +\$124

R urethane arm caps ☐ +\$0

#### Step 8. Arm Cap Finish

##### For urethane arm caps (R)

BK black ☐ +\$124

PW pewter ☐ +\$226

##### For wood arm caps (W)

SF same as chair frame finish ☐ +\$0

##### For upholstered arms (U)

SU same as chair arm upholstery ☐ +\$0

##### For solid surface arm caps (K)

58 cameo white ☐ +\$375

ANC antarctica ☐ +\$425

CQ glacier white ☐ +\$375

QB bisque ☐ +\$375

SVG silver gray ☐ +\$425

# Brava Classic Two Seat, 50.5" Wide

continued

Nemschoff® Brava Classic

Step 9. Wood Finish		
<b>0Z</b>	medium cherry <input type="checkbox"/>	+\$0
<b>2U</b>	light brown walnut <input type="checkbox"/>	+\$0
<b>40</b>	dark brown walnut <input type="checkbox"/>	+\$0
<b>5K</b>	honey maple <input type="checkbox"/>	+\$0
<b>ED</b>	aged cherry <input type="checkbox"/>	+\$0
<b>IZ</b>	aged teak <input type="checkbox"/>	+\$0
<b>UL</b>	natural maple <input type="checkbox"/>	+\$0

Step 10. Moisture Barrier Option		
<b>MBN</b>	no moisture barrier <input type="checkbox"/>	+\$0
<b>MBB</b>	moisture barrier back only <input type="checkbox"/>	+\$150
<b>MBS</b>	moisture barrier seat only <input type="checkbox"/>	+\$150
<b>MBX</b>	moisture barrier seat and back <input type="checkbox"/>	+\$300

Step 11. MicrobeCare Selection		
<b>MCN</b>	no MicrobeCare protection <input type="checkbox"/>	+\$0
<b>MCY</b>	MicrobeCare protection <input type="checkbox"/>	+\$75

## Step 12.

### Fabric

*For not fire retardant (non CTB-133) (NR) with one fabric (1F)*

Price Category (Nemschoff) Series 3 <input type="checkbox"/>	+\$0
Price Category (Nemschoff) Series 4 <input type="checkbox"/>	+\$377
Price Category (Nemschoff) Series 5 <input type="checkbox"/>	+\$771
Price Category (Nemschoff) Series 6 <input type="checkbox"/>	+\$1242
Price Category (Nemschoff) Series 7 <input type="checkbox"/>	+\$1714
Price Category (Nemschoff) Series 8 <input type="checkbox"/>	+\$2305

### Seat Fabric

*For not fire retardant (non CTB-133) (NR) with multiple fabrics (MF)*

Price Category (Nemschoff) Series 3 <input type="checkbox"/>	+\$0
Price Category (Nemschoff) Series 4 <input type="checkbox"/>	+\$162
Price Category (Nemschoff) Series 5 <input type="checkbox"/>	+\$312
Price Category (Nemschoff) Series 6 <input type="checkbox"/>	+\$490
Price Category (Nemschoff) Series 7 <input type="checkbox"/>	+\$668
Price Category (Nemschoff) Series 8 <input type="checkbox"/>	+\$895

## Step 13. Back Fabric

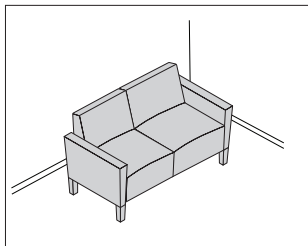
*For not fire retardant (non CTB-133) (NR) with multiple fabrics (MF)*

Price Category (Nemschoff) Series 3 <input type="checkbox"/>	+\$0
Price Category (Nemschoff) Series 4 <input type="checkbox"/>	+\$203
Price Category (Nemschoff) Series 5 <input type="checkbox"/>	+\$390
Price Category (Nemschoff) Series 6 <input type="checkbox"/>	+\$613
Price Category (Nemschoff) Series 7 <input type="checkbox"/>	+\$838
Price Category (Nemschoff) Series 8 <input type="checkbox"/>	+\$1118

## Step 14. Arm Fabric

*For not fire retardant (non CTB-133) (NR) with multiple fabrics (MF)*

Price Category (Nemschoff) Series 3 <input type="checkbox"/>	+\$0
Price Category (Nemschoff) Series 4 <input type="checkbox"/>	+\$170
Price Category (Nemschoff) Series 5 <input type="checkbox"/>	+\$326
Price Category (Nemschoff) Series 6 <input type="checkbox"/>	+\$514
Price Category (Nemschoff) Series 7 <input type="checkbox"/>	+\$704
Price Category (Nemschoff) Series 8 <input type="checkbox"/>	+\$938



### Product Information

#### Description

##### Features:

- Solid maple frame
- Mortise and tenon joinery
- Spring seat construction
- Clean-out design
- Replaceable components
- Upholstered arms
- Non-marring  $\frac{7}{8}$ " rubber-cushioned glides
- Nemschoff® healthcare wood finish
- Indoor Advantage™ Gold Certified

#### Notes

Weight—78 lbs

COM yardage:

Single Fabric—7

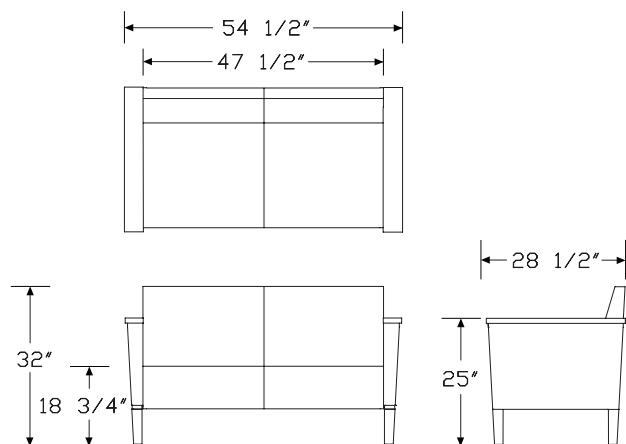
Multiple Fabrics:

Seat—3

Back—3½

Arms—3

#### Dimensions



### Specification Information

#### Step 1.

861-20 ☐

#### Step 2. Size

-2 54.5" wide ☐ +\$4682

#### Step 3. Covers

S standard covers ☐ +\$0

P removable covers ☐ +\$564

#### Step 4. Arm with Literature Storage

N no literature storage ☐ +\$0

#### Step 5. Fire Retardancy

NR not fire retardant (non CTB-133) ☐ +\$0

#### Step 6. Fabric Configuration

1F one fabric ☐ +\$0

MF multiple fabrics ☐ +\$127

#### Step 7. Arm Cap Detail

K solid surface arm caps ☐ +\$0

U upholstered arms ☐ +\$0

W wood arm caps ☐ +\$124

R urethane arm caps ☐ +\$0

#### Step 8. Arm Cap Finish

##### For urethane arm caps (R)

BK black ☐ +\$124

PW pewter ☐ +\$226

##### For wood arm caps (W)

SF same as chair frame finish ☐ +\$0

##### For upholstered arms (U)

SU same as chair arm upholstery ☐ +\$0

##### For solid surface arm caps (K)

58 cameo white ☐ +\$375

ANC antarctica ☐ +\$425

CQ glacier white ☐ +\$375

QB bisque ☐ +\$375

SVG silver gray ☐ +\$425

# Brava Classic Two Seat, 54.5" Wide

continued

Nemschoff® Brava Classic

Step 9. Wood Finish		
<b>0Z</b>	medium cherry <input type="checkbox"/>	+\$0
<b>2U</b>	light brown walnut <input type="checkbox"/>	+\$0
<b>40</b>	dark brown walnut <input type="checkbox"/>	+\$0
<b>5K</b>	honey maple <input type="checkbox"/>	+\$0
<b>ED</b>	aged cherry <input type="checkbox"/>	+\$0
<b>IZ</b>	aged teak <input type="checkbox"/>	+\$0
<b>UL</b>	natural maple <input type="checkbox"/>	+\$0

Step 10. Moisture Barrier Option		
<b>MBN</b>	no moisture barrier <input type="checkbox"/>	+\$0
<b>MBB</b>	moisture barrier back only <input type="checkbox"/>	+\$150
<b>MBS</b>	moisture barrier seat only <input type="checkbox"/>	+\$150
<b>MBX</b>	moisture barrier seat and back <input type="checkbox"/>	+\$300

Step 11. MicrobeCare Selection		
<b>MCN</b>	no MicrobeCare protection <input type="checkbox"/>	+\$0
<b>MCY</b>	MicrobeCare protection <input type="checkbox"/>	+\$75

## Step 12.

### Fabric

*For not fire retardant (non CTB-133) (NR) with one fabric (1F)*

Price Category (Nemschoff) Series 3 <input type="checkbox"/>	+\$0
Price Category (Nemschoff) Series 4 <input type="checkbox"/>	+\$406
Price Category (Nemschoff) Series 5 <input type="checkbox"/>	+\$830
Price Category (Nemschoff) Series 6 <input type="checkbox"/>	+\$1335
Price Category (Nemschoff) Series 7 <input type="checkbox"/>	+\$1845
Price Category (Nemschoff) Series 8 <input type="checkbox"/>	+\$2483

### Seat Fabric

*For not fire retardant (non CTB-133) (NR) with multiple fabrics (MF)*

Price Category (Nemschoff) Series 3 <input type="checkbox"/>	+\$0
Price Category (Nemschoff) Series 4 <input type="checkbox"/>	+\$175
Price Category (Nemschoff) Series 5 <input type="checkbox"/>	+\$335
Price Category (Nemschoff) Series 6 <input type="checkbox"/>	+\$527
Price Category (Nemschoff) Series 7 <input type="checkbox"/>	+\$722
Price Category (Nemschoff) Series 8 <input type="checkbox"/>	+\$964

## Step 13. Back Fabric

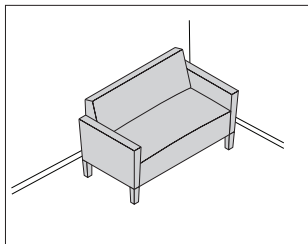
*For not fire retardant (non CTB-133) (NR) with multiple fabrics (MF)*

Price Category (Nemschoff) Series 3 <input type="checkbox"/>	+\$0
Price Category (Nemschoff) Series 4 <input type="checkbox"/>	+\$217
Price Category (Nemschoff) Series 5 <input type="checkbox"/>	+\$419
Price Category (Nemschoff) Series 6 <input type="checkbox"/>	+\$659
Price Category (Nemschoff) Series 7 <input type="checkbox"/>	+\$902
Price Category (Nemschoff) Series 8 <input type="checkbox"/>	+\$1204

## Step 14. Arm Fabric

*For not fire retardant (non CTB-133) (NR) with multiple fabrics (MF)*

Price Category (Nemschoff) Series 3 <input type="checkbox"/>	+\$0
Price Category (Nemschoff) Series 4 <input type="checkbox"/>	+\$184
Price Category (Nemschoff) Series 5 <input type="checkbox"/>	+\$352
Price Category (Nemschoff) Series 6 <input type="checkbox"/>	+\$554
Price Category (Nemschoff) Series 7 <input type="checkbox"/>	+\$756
Price Category (Nemschoff) Series 8 <input type="checkbox"/>	+\$1013



### Product Information

#### Description

##### Features:

- Solid maple frame
- Mortise and tenon joinery
- Spring seat construction
- Clean-out design
- Replaceable components
- Upholstered arms
- Non-marring  $\frac{7}{8}$ " rubber-cushioned glides
- Nemschoff® healthcare wood finish
- Indoor Advantage™ Gold Certified

#### Notes

Weight—72 lbs

COM yardage:

Single Fabric—6¼

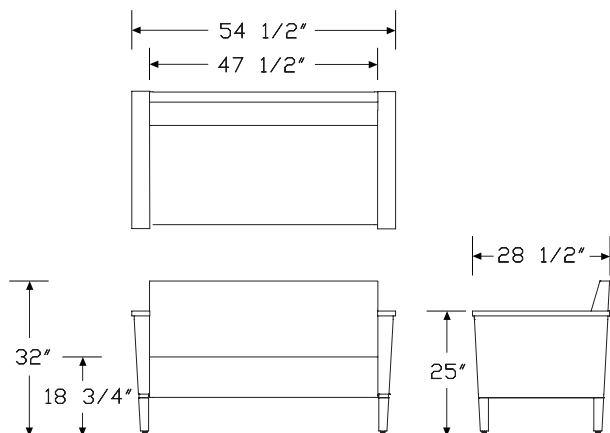
Multiple Fabrics:

Seat—2

Back—3

Arms—3

#### Dimensions



### Specification Information

#### Step 1.

861 ☐

#### Step 2. Size

-2 54.5" wide ☐ +\$4682

#### Step 3. Covers

S standard covers ☐ +\$0  
P removable covers ☐ +\$564

#### Step 4. Arm with Literature Storage

N no literature storage ☐ +\$0

#### Step 5. Fire Retardancy

NR not fire retardant (non CTB-133) ☐ +\$0

#### Step 6. Fabric Configuration

1F one fabric ☐ +\$0  
MF multiple fabrics ☐ +\$127

#### Step 7. Arm Cap Detail

K solid surface arm caps ☐ +\$0  
U upholstered arms ☐ +\$0  
W wood arm caps ☐ +\$124  
R urethane arm caps ☐ +\$0

#### Step 8. Arm Cap Finish

##### For upholstered arms (U)

SU same as chair arm upholstery ☐ +\$0

##### For urethane arm caps (R)

BK black ☐ +\$124  
PW pewter ☐ +\$226

##### For wood arm caps (W)

SF same as chair frame finish ☐ +\$0

##### For solid surface arm caps (K)

58 cameo white ☐ +\$375  
ANC antarctica ☐ +\$425  
CQ glacier white ☐ +\$375  
QB bisque ☐ +\$375  
SVG silver gray ☐ +\$425

# Brava Classic Settee, 54.5" Wide

continued

Nemschoff® Brava Classic

Step 9. Wood Finish		
<b>0Z</b>	medium cherry <input type="checkbox"/>	+\$0
<b>2U</b>	light brown walnut <input type="checkbox"/>	+\$0
<b>40</b>	dark brown walnut <input type="checkbox"/>	+\$0
<b>5K</b>	honey maple <input type="checkbox"/>	+\$0
<b>ED</b>	aged cherry <input type="checkbox"/>	+\$0
<b>IZ</b>	aged teak <input type="checkbox"/>	+\$0
<b>UL</b>	natural maple <input type="checkbox"/>	+\$0

Step 10. Moisture Barrier Option		
<b>MBN</b>	no moisture barrier <input type="checkbox"/>	+\$0
<b>MBB</b>	moisture barrier back only <input type="checkbox"/>	+\$150
<b>MBS</b>	moisture barrier seat only <input type="checkbox"/>	+\$150
<b>MBX</b>	moisture barrier seat and back <input type="checkbox"/>	+\$300

Step 11. MicrobeCare Selection		
<b>MCN</b>	no MicrobeCare protection <input type="checkbox"/>	+\$0
<b>MCY</b>	MicrobeCare protection <input type="checkbox"/>	+\$100

## Step 12.

### Fabric

*For not fire retardant (non CTB-133) (NR) with one fabric (1F)*

Price Category (Nemschoff) Series 3 <input type="checkbox"/>	+\$0
Price Category (Nemschoff) Series 4 <input type="checkbox"/>	+\$363
Price Category (Nemschoff) Series 5 <input type="checkbox"/>	+\$743
Price Category (Nemschoff) Series 6 <input type="checkbox"/>	+\$1192
Price Category (Nemschoff) Series 7 <input type="checkbox"/>	+\$1647
Price Category (Nemschoff) Series 8 <input type="checkbox"/>	+\$2216

### Seat Fabric

*For not fire retardant (non CTB-133) (NR) with multiple fabrics (MF)*

Price Category (Nemschoff) Series 3 <input type="checkbox"/>	+\$0
Price Category (Nemschoff) Series 4 <input type="checkbox"/>	+\$137
Price Category (Nemschoff) Series 5 <input type="checkbox"/>	+\$260
Price Category (Nemschoff) Series 6 <input type="checkbox"/>	+\$406
Price Category (Nemschoff) Series 7 <input type="checkbox"/>	+\$555
Price Category (Nemschoff) Series 8 <input type="checkbox"/>	+\$743

## Step 13. Back Fabric

*For not fire retardant (non CTB-133) (NR) with multiple fabrics (MF)*

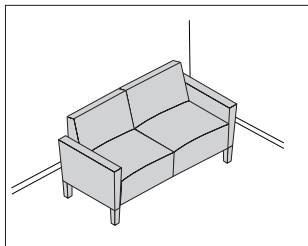
Price Category (Nemschoff) Series 3 <input type="checkbox"/>	+\$0
Price Category (Nemschoff) Series 4 <input type="checkbox"/>	+\$201
Price Category (Nemschoff) Series 5 <input type="checkbox"/>	+\$386
Price Category (Nemschoff) Series 6 <input type="checkbox"/>	+\$605
Price Category (Nemschoff) Series 7 <input type="checkbox"/>	+\$823
Price Category (Nemschoff) Series 8 <input type="checkbox"/>	+\$1102

## Step 14. Arm Fabric

*For not fire retardant (non CTB-133) (NR) with multiple fabrics (MF)*

Price Category (Nemschoff) Series 3 <input type="checkbox"/>	+\$0
Price Category (Nemschoff) Series 4 <input type="checkbox"/>	+\$188
Price Category (Nemschoff) Series 5 <input type="checkbox"/>	+\$359
Price Category (Nemschoff) Series 6 <input type="checkbox"/>	+\$562
Price Category (Nemschoff) Series 7 <input type="checkbox"/>	+\$771
Price Category (Nemschoff) Series 8 <input type="checkbox"/>	+\$1029





### Product Information

#### Description

##### Features:

- Solid maple frame
- Mortise and tenon joinery
- Spring seat construction
- Clean-out design
- Replaceable components
- Upholstered arms
- Non-marring  $\frac{7}{8}$ " rubber-cushioned glides
- Nemschoff® healthcare wood finish
- Indoor Advantage™ Gold Certified

#### Notes

Weight—82 lbs

COM yardage:

Single Fabric—9½

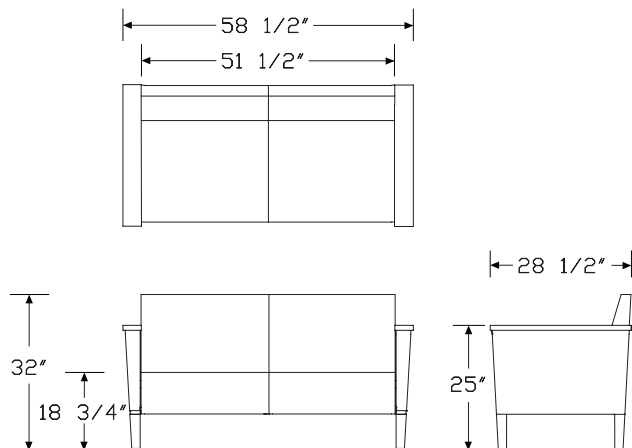
Multiple Fabrics:

Seat—3¼

Back—4

Arms—3

#### Dimensions



### Specification Information

#### Step 1.

861-20 ☐

#### Step 2. Size

-3 58.5" wide ☐ +\$5370

#### Step 3. Covers

S standard covers ☐ +\$0  
P removable covers ☐ +\$648

#### Step 4. Arm with Literature Storage

N no literature storage ☐ +\$0

#### Step 5. Fire Retardancy

NR not fire retardant (non CTB-133) ☐ +\$0

#### Step 6. Fabric Configuration

1F one fabric ☐ +\$0  
MF multiple fabrics ☐ +\$127

#### Step 7. Arm Cap Detail

K solid surface arm caps ☐ +\$0  
U upholstered arms ☐ +\$0  
W wood arm caps ☐ +\$124  
R urethane arm caps ☐ +\$0

#### Step 8. Arm Cap Finish

##### For urethane arm caps (R)

BK black ☐ +\$124  
PW pewter ☐ +\$226

##### For wood arm caps (W)

SF same as chair frame finish ☐ +\$0

##### For upholstered arms (U)

SU same as chair arm upholstery ☐ +\$0

##### For solid surface arm caps (K)

58 cameo white ☐ +\$375  
ANC antarctica ☐ +\$425  
CQ glacier white ☐ +\$375  
QB bisque ☐ +\$375  
SVG silver gray ☐ +\$425

# Brava Classic Two Seat, 58.5" Wide

continued

Nemschoff® Brava Classic

Step 9. Wood Finish		
<b>0Z</b>	medium cherry <input type="checkbox"/>	+\$0
<b>2U</b>	light brown walnut <input type="checkbox"/>	+\$0
<b>40</b>	dark brown walnut <input type="checkbox"/>	+\$0
<b>5K</b>	honey maple <input type="checkbox"/>	+\$0
<b>ED</b>	aged cherry <input type="checkbox"/>	+\$0
<b>IZ</b>	aged teak <input type="checkbox"/>	+\$0
<b>UL</b>	natural maple <input type="checkbox"/>	+\$0

Step 10. Moisture Barrier Option		
<b>MBN</b>	no moisture barrier <input type="checkbox"/>	+\$0
<b>MBB</b>	moisture barrier back only <input type="checkbox"/>	+\$150
<b>MBS</b>	moisture barrier seat only <input type="checkbox"/>	+\$150
<b>MBX</b>	moisture barrier seat and back <input type="checkbox"/>	+\$300

Step 11. MicrobeCare Selection		
<b>MCN</b>	no MicrobeCare protection <input type="checkbox"/>	+\$0
<b>MCY</b>	MicrobeCare protection <input type="checkbox"/>	+\$75

## Step 12.

### Fabric

*For not fire retardant (non CTB-133) (NR) with one fabric (1F)*

Price Category (Nemschoff) Series 3 <input type="checkbox"/>	+\$0
Price Category (Nemschoff) Series 4 <input type="checkbox"/>	+\$552
Price Category (Nemschoff) Series 5 <input type="checkbox"/>	+\$1127
Price Category (Nemschoff) Series 6 <input type="checkbox"/>	+\$1813
Price Category (Nemschoff) Series 7 <input type="checkbox"/>	+\$2504
Price Category (Nemschoff) Series 8 <input type="checkbox"/>	+\$3369

### Seat Fabric

*For not fire retardant (non CTB-133) (NR) with multiple fabrics (MF)*

Price Category (Nemschoff) Series 3 <input type="checkbox"/>	+\$0
Price Category (Nemschoff) Series 4 <input type="checkbox"/>	+\$231
Price Category (Nemschoff) Series 5 <input type="checkbox"/>	+\$458
Price Category (Nemschoff) Series 6 <input type="checkbox"/>	+\$729
Price Category (Nemschoff) Series 7 <input type="checkbox"/>	+\$1005
Price Category (Nemschoff) Series 8 <input type="checkbox"/>	+\$1342

## Step 13. Back Fabric

*For not fire retardant (non CTB-133) (NR) with multiple fabrics (MF)*

Price Category (Nemschoff) Series 3 <input type="checkbox"/>	+\$0
Price Category (Nemschoff) Series 4 <input type="checkbox"/>	+\$294
Price Category (Nemschoff) Series 5 <input type="checkbox"/>	+\$583
Price Category (Nemschoff) Series 6 <input type="checkbox"/>	+\$926
Price Category (Nemschoff) Series 7 <input type="checkbox"/>	+\$1277
Price Category (Nemschoff) Series 8 <input type="checkbox"/>	+\$1710

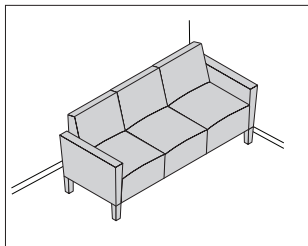
## Step 14. Arm Fabric

*For not fire retardant (non CTB-133) (NR) with multiple fabrics (MF)*

Price Category (Nemschoff) Series 3 <input type="checkbox"/>	+\$0
Price Category (Nemschoff) Series 4 <input type="checkbox"/>	+\$175
Price Category (Nemschoff) Series 5 <input type="checkbox"/>	+\$348
Price Category (Nemschoff) Series 6 <input type="checkbox"/>	+\$552
Price Category (Nemschoff) Series 7 <input type="checkbox"/>	+\$758
Price Category (Nemschoff) Series 8 <input type="checkbox"/>	+\$1016

# Brava Classic Three Seat, 72.75" Wide

861-3



## Product Information

### Description

#### Features:

- Solid maple frame
- Mortise and tenon joinery
- Spring seat construction
- Clean-out design
- Replaceable components
- Upholstered arms
- Non-marring 7/8" rubber-cushioned glides
- Nemschoff® healthcare wood finish
- Indoor Advantage™ Gold Certified

### Notes

Weight—100 lbs

COM yardage:

Single Fabric—8½

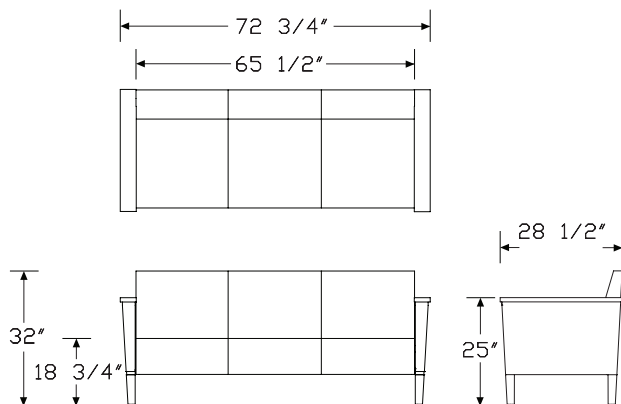
Multiple Fabrics:

Seat—3¾

Back—4

Arms—3

## Dimensions



## Specification Information

### Step 1.

861-30 [A]

### Step 2. Size

-1 72.75" wide [A] +\$6105

### Step 3. Covers

S standard covers [A] +\$0  
P removable covers [A] +\$735

### Step 4. Arm with Literature Storage

N no literature storage [A] +\$0

### Step 5. Fire Retardancy

NR not fire retardant (non CTB-133) [A] +\$0

### Step 6. Fabric Configuration

1F one fabric [A] +\$0  
MF multiple fabrics [A] +\$127

### Step 7. Arm Cap Detail

K solid surface arm caps [A] +\$0  
U upholstered arms [A] +\$0  
W wood arm caps [A] +\$124  
R urethane arm caps [A] +\$0

### Step 8. Arm Cap Finish

#### For urethane arm caps (R)

BK black [A] +\$124  
PW pewter [A] +\$226

#### For wood arm caps (W)

SF same as chair frame finish [A] +\$0

#### For upholstered arms (U)

SU same as chair arm upholstery [A] +\$0

#### For solid surface arm caps (K)

58 cameo white [A] +\$375  
ANC antarctica [A] +\$425  
CQ glacier white [A] +\$375  
QB bisque [A] +\$375  
SVG silver gray [A] +\$425

# Brava Classic Three Seat, 72.75"

Wide *continued*

Nemschoff® Brava Classic

Step 9. Wood Finish		
<b>0Z</b>	medium cherry <input type="checkbox"/>	+\$0
<b>2U</b>	light brown walnut <input type="checkbox"/>	+\$0
<b>40</b>	dark brown walnut <input type="checkbox"/>	+\$0
<b>5K</b>	honey maple <input type="checkbox"/>	+\$0
<b>ED</b>	aged cherry <input type="checkbox"/>	+\$0
<b>IZ</b>	aged teak <input type="checkbox"/>	+\$0
<b>UL</b>	natural maple <input type="checkbox"/>	+\$0

Step 10. Moisture Barrier Option		
<b>MBN</b>	no moisture barrier <input type="checkbox"/>	+\$0
<b>MBB</b>	moisture barrier back only <input type="checkbox"/>	+\$225
<b>MBS</b>	moisture barrier seat only <input type="checkbox"/>	+\$225
<b>MBX</b>	moisture barrier seat and back <input type="checkbox"/>	+\$450

Step 11. MicrobeCare Selection		
<b>MCN</b>	no MicrobeCare protection <input type="checkbox"/>	+\$0
<b>MCY</b>	MicrobeCare protection <input type="checkbox"/>	+\$100

## Step 12.

### Fabric

*For not fire retardant (non CTB-133) (NR) with one fabric (1F)*

Price Category (Nemschoff) Series 3 <input type="checkbox"/>	+\$0
Price Category (Nemschoff) Series 4 <input type="checkbox"/>	+\$494
Price Category (Nemschoff) Series 5 <input type="checkbox"/>	+\$1010
Price Category (Nemschoff) Series 6 <input type="checkbox"/>	+\$1622
Price Category (Nemschoff) Series 7 <input type="checkbox"/>	+\$2240
Price Category (Nemschoff) Series 8 <input type="checkbox"/>	+\$3015

### Seat Fabric

*For not fire retardant (non CTB-133) (NR) with multiple fabrics (MF)*

Price Category (Nemschoff) Series 3 <input type="checkbox"/>	+\$0
Price Category (Nemschoff) Series 4 <input type="checkbox"/>	+\$242
Price Category (Nemschoff) Series 5 <input type="checkbox"/>	+\$464
Price Category (Nemschoff) Series 6 <input type="checkbox"/>	+\$726
Price Category (Nemschoff) Series 7 <input type="checkbox"/>	+\$989
Price Category (Nemschoff) Series 8 <input type="checkbox"/>	+\$1323

## Step 13. Back Fabric

*For not fire retardant (non CTB-133) (NR) with multiple fabrics (MF)*

Price Category (Nemschoff) Series 3 <input type="checkbox"/>	+\$0
Price Category (Nemschoff) Series 4 <input type="checkbox"/>	+\$302
Price Category (Nemschoff) Series 5 <input type="checkbox"/>	+\$577
Price Category (Nemschoff) Series 6 <input type="checkbox"/>	+\$907
Price Category (Nemschoff) Series 7 <input type="checkbox"/>	+\$1238
Price Category (Nemschoff) Series 8 <input type="checkbox"/>	+\$1653

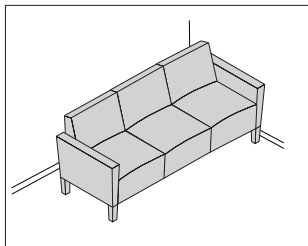
## Step 14. Arm Fabric

*For not fire retardant (non CTB-133) (NR) with multiple fabrics (MF)*

Price Category (Nemschoff) Series 3 <input type="checkbox"/>	+\$0
Price Category (Nemschoff) Series 4 <input type="checkbox"/>	+\$168
Price Category (Nemschoff) Series 5 <input type="checkbox"/>	+\$324
Price Category (Nemschoff) Series 6 <input type="checkbox"/>	+\$507
Price Category (Nemschoff) Series 7 <input type="checkbox"/>	+\$695
Price Category (Nemschoff) Series 8 <input type="checkbox"/>	+\$927

# Brava Classic Three Seat, 78.75" Wide

861-3



## Product Information

### Description

#### Features:

- Solid maple frame
- Mortise and tenon joinery
- Spring seat construction
- Clean-out design
- Replaceable components
- Upholstered arms
- Non-marring 7/8" rubber-cushioned glides
- Nemschoff® healthcare wood finish
- Indoor Advantage™ Gold Certified

### Notes

Weight—106 lbs

COM yardage:

Single Fabric—9

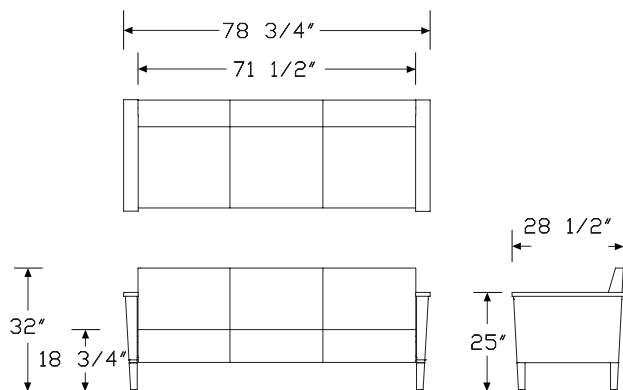
Multiple Fabrics:

Seat—3¾

Back—4

Arms—3

## Dimensions



## Specification Information

### Step 1.

861-30 [A]

### Step 2. Size

-2 78.75" wide [A] +\$6133

### Step 3. Covers

S standard covers [A] +\$0  
P removable covers [A] +\$737

### Step 4. Arm with Literature Storage

N no literature storage [A] +\$0

### Step 5. Fire Retardancy

NR not fire retardant (non CTB-133) [A] +\$0

### Step 6. Fabric Configuration

1F one fabric [A] +\$0  
MF multiple fabrics [A] +\$127

### Step 7. Arm Cap Detail

K solid surface arm caps [A] +\$0  
U upholstered arms [A] +\$0  
W wood arm caps [A] +\$124  
R urethane arm caps [A] +\$0

### Step 8. Arm Cap Finish

#### For urethane arm caps (R)

BK black [A] +\$124  
PW pewter [A] +\$226

#### For wood arm caps (W)

SF same as chair frame finish [A] +\$0

#### For upholstered arms (U)

SU same as chair arm upholstery [A] +\$0

#### For solid surface arm caps (K)

58 cameo white [A] +\$375  
ANC antarctica [A] +\$425  
CQ glacier white [A] +\$375  
QB bisque [A] +\$375  
SVG silver gray [A] +\$425

# Brava Classic Three Seat, 78.75"

Wide *continued*

Nemschoff® Brava Classic

Step 9. Wood Finish		
<b>0Z</b>	medium cherry <input type="checkbox"/>	+\$0
<b>2U</b>	light brown walnut <input type="checkbox"/>	+\$0
<b>40</b>	dark brown walnut <input type="checkbox"/>	+\$0
<b>5K</b>	honey maple <input type="checkbox"/>	+\$0
<b>ED</b>	aged cherry <input type="checkbox"/>	+\$0
<b>IZ</b>	aged teak <input type="checkbox"/>	+\$0
<b>UL</b>	natural maple <input type="checkbox"/>	+\$0

Step 10. Moisture Barrier Option		
<b>MBN</b>	no moisture barrier <input type="checkbox"/>	+\$0
<b>MBB</b>	moisture barrier back only <input type="checkbox"/>	+\$225
<b>MBS</b>	moisture barrier seat only <input type="checkbox"/>	+\$225
<b>MBX</b>	moisture barrier seat and back <input type="checkbox"/>	+\$450

Step 11. MicrobeCare Selection		
<b>MCN</b>	no MicrobeCare protection <input type="checkbox"/>	+\$0
<b>MCY</b>	MicrobeCare protection <input type="checkbox"/>	+\$100

## Step 12.

### Fabric

*For not fire retardant (non CTB-133) (NR) with one fabric (1F)*

Price Category (Nemschoff) Series 3 <input type="checkbox"/>	+\$0
Price Category (Nemschoff) Series 4 <input type="checkbox"/>	+\$522
Price Category (Nemschoff) Series 5 <input type="checkbox"/>	+\$1068
Price Category (Nemschoff) Series 6 <input type="checkbox"/>	+\$1717
Price Category (Nemschoff) Series 7 <input type="checkbox"/>	+\$2373
Price Category (Nemschoff) Series 8 <input type="checkbox"/>	+\$3193

### Seat Fabric

*For not fire retardant (non CTB-133) (NR) with multiple fabrics (MF)*

Price Category (Nemschoff) Series 3 <input type="checkbox"/>	+\$0
Price Category (Nemschoff) Series 4 <input type="checkbox"/>	+\$250
Price Category (Nemschoff) Series 5 <input type="checkbox"/>	+\$482
Price Category (Nemschoff) Series 6 <input type="checkbox"/>	+\$758
Price Category (Nemschoff) Series 7 <input type="checkbox"/>	+\$1037
Price Category (Nemschoff) Series 8 <input type="checkbox"/>	+\$1383

## Step 13. Back Fabric

*For not fire retardant (non CTB-133) (NR) with multiple fabrics (MF)*

Price Category (Nemschoff) Series 3 <input type="checkbox"/>	+\$0
Price Category (Nemschoff) Series 4 <input type="checkbox"/>	+\$314
Price Category (Nemschoff) Series 5 <input type="checkbox"/>	+\$602
Price Category (Nemschoff) Series 6 <input type="checkbox"/>	+\$949
Price Category (Nemschoff) Series 7 <input type="checkbox"/>	+\$1295
Price Category (Nemschoff) Series 8 <input type="checkbox"/>	+\$1731

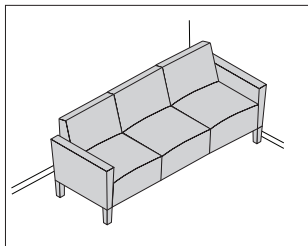
## Step 14. Arm Fabric

*For not fire retardant (non CTB-133) (NR) with multiple fabrics (MF)*

Price Category (Nemschoff) Series 3 <input type="checkbox"/>	+\$0
Price Category (Nemschoff) Series 4 <input type="checkbox"/>	+\$176
Price Category (Nemschoff) Series 5 <input type="checkbox"/>	+\$339
Price Category (Nemschoff) Series 6 <input type="checkbox"/>	+\$531
Price Category (Nemschoff) Series 7 <input type="checkbox"/>	+\$725
Price Category (Nemschoff) Series 8 <input type="checkbox"/>	+\$972

# Brava Classic Three Seat, 80.75" Wide

861-3



## Product Information

### Description

#### Features:

- Solid maple frame
- Mortise and tenon joinery
- Spring seat construction
- Clean-out design
- Replaceable components
- Upholstered arms
- Non-marring 7/8" rubber-cushioned glides
- Nemschoff® healthcare wood finish
- Indoor Advantage™ Gold Certified

### Notes

Weight—109 lbs

COM yardage:

Single Fabric—10

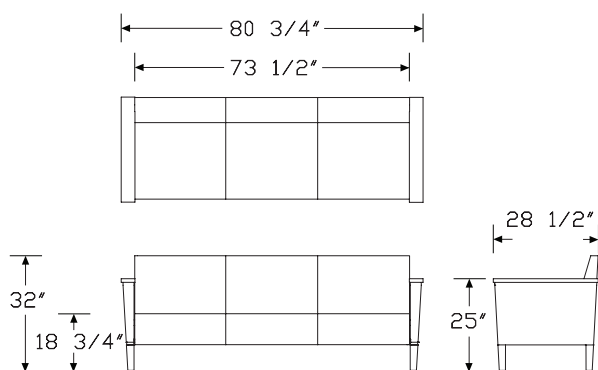
Multiple Fabrics:

Seat—3¾

Back—4

Arms—3

### Dimensions



## Specification Information

### Step 1.

861-30 ☐

### Step 2. Size

-3 80.75" wide ☐ +\$6133

### Step 3. Covers

S standard covers ☐ +\$0

P removable covers ☐ +\$737

### Step 4. Arm with Literature Storage

N no literature storage ☐ +\$0

### Step 5. Fire Retardancy

NR not fire retardant (non CTB-133) ☐ +\$0

### Step 6. Fabric Configuration

1F one fabric ☐ +\$0

MF multiple fabrics ☐ +\$127

### Step 7. Arm Cap Detail

K solid surface arm caps ☐ +\$0

U upholstered arms ☐ +\$0

W wood arm caps ☐ +\$124

R urethane arm caps ☐ +\$0

### Step 8. Arm Cap Finish

#### For urethane arm caps (R)

BK black ☐ +\$124

PW pewter ☐ +\$226

#### For wood arm caps (W)

SF same as chair frame finish ☐ +\$0

#### For upholstered arms (U)

SU same as chair arm upholstery ☐ +\$0

#### For solid surface arm caps (K)

58 cameo white ☐ +\$375

ANC antarctica ☐ +\$425

CQ glacier white ☐ +\$375

QB bisque ☐ +\$375

SVG silver gray ☐ +\$425

# Brava Classic Three Seat, 80.75"

Wide *continued*

Nemschoff® Brava Classic

Step 9. Wood Finish		
<b>0Z</b>	medium cherry <input type="checkbox"/>	+\$0
<b>2U</b>	light brown walnut <input type="checkbox"/>	+\$0
<b>40</b>	dark brown walnut <input type="checkbox"/>	+\$0
<b>5K</b>	honey maple <input type="checkbox"/>	+\$0
<b>ED</b>	aged cherry <input type="checkbox"/>	+\$0
<b>IZ</b>	aged teak <input type="checkbox"/>	+\$0
<b>UL</b>	natural maple <input type="checkbox"/>	+\$0

Step 10. Moisture Barrier Option		
<b>MBN</b>	no moisture barrier <input type="checkbox"/>	+\$0
<b>MBB</b>	moisture barrier back only <input type="checkbox"/>	+\$225
<b>MBS</b>	moisture barrier seat only <input type="checkbox"/>	+\$225
<b>MBX</b>	moisture barrier seat and back <input type="checkbox"/>	+\$450

Step 11. MicrobeCare Selection		
<b>MCN</b>	no MicrobeCare protection <input type="checkbox"/>	+\$0
<b>MCY</b>	MicrobeCare protection <input type="checkbox"/>	+\$100

## Step 12.

### Fabric

*For not fire retardant (non CTB-133) (NR) with one fabric (1F)*

Price Category (Nemschoff) Series 3 <input type="checkbox"/>	+\$0
Price Category (Nemschoff) Series 4 <input type="checkbox"/>	+\$580
Price Category (Nemschoff) Series 5 <input type="checkbox"/>	+\$1187
Price Category (Nemschoff) Series 6 <input type="checkbox"/>	+\$1907
Price Category (Nemschoff) Series 7 <input type="checkbox"/>	+\$2636
Price Category (Nemschoff) Series 8 <input type="checkbox"/>	+\$3547

### Seat Fabric

*For not fire retardant (non CTB-133) (NR) with multiple fabrics (MF)*

Price Category (Nemschoff) Series 3 <input type="checkbox"/>	+\$0
Price Category (Nemschoff) Series 4 <input type="checkbox"/>	+\$286
Price Category (Nemschoff) Series 5 <input type="checkbox"/>	+\$566
Price Category (Nemschoff) Series 6 <input type="checkbox"/>	+\$896
Price Category (Nemschoff) Series 7 <input type="checkbox"/>	+\$1231
Price Category (Nemschoff) Series 8 <input type="checkbox"/>	+\$1648

## Step 13. Back Fabric

*For not fire retardant (non CTB-133) (NR) with multiple fabrics (MF)*

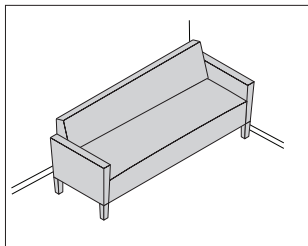
Price Category (Nemschoff) Series 3 <input type="checkbox"/>	+\$0
Price Category (Nemschoff) Series 4 <input type="checkbox"/>	+\$293
Price Category (Nemschoff) Series 5 <input type="checkbox"/>	+\$575
Price Category (Nemschoff) Series 6 <input type="checkbox"/>	+\$913
Price Category (Nemschoff) Series 7 <input type="checkbox"/>	+\$1256
Price Category (Nemschoff) Series 8 <input type="checkbox"/>	+\$1681

## Step 14. Arm Fabric

*For not fire retardant (non CTB-133) (NR) with multiple fabrics (MF)*

Price Category (Nemschoff) Series 3 <input type="checkbox"/>	+\$0
Price Category (Nemschoff) Series 4 <input type="checkbox"/>	+\$175
Price Category (Nemschoff) Series 5 <input type="checkbox"/>	+\$344
Price Category (Nemschoff) Series 6 <input type="checkbox"/>	+\$547
Price Category (Nemschoff) Series 7 <input type="checkbox"/>	+\$750
Price Category (Nemschoff) Series 8 <input type="checkbox"/>	+\$1005





### Product Information

#### Description

##### Features:

- Solid maple frame
- Mortise and tenon joinery
- Spring seat construction
- Clean-out design
- Replaceable components
- Upholstered arms
- Non-marring  $\frac{7}{8}$ " rubber-cushioned glides
- Nemschoff® healthcare wood finish
- Indoor Advantage™ Gold Certified

#### Notes

Weight—96 lbs

COM yardage:

Single Fabric—8

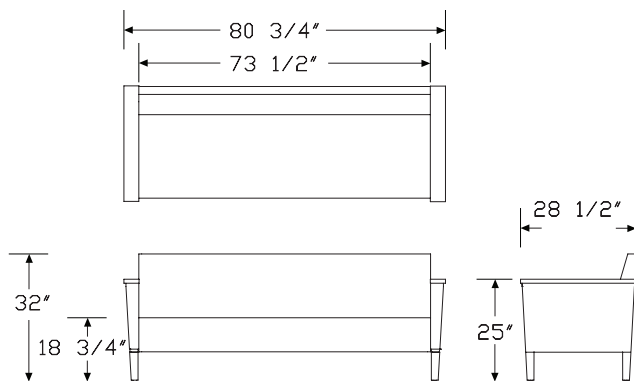
Multiple Fabrics:

Seat— $3\frac{1}{4}$

Back— $3\frac{1}{2}$

Arms—3

#### Dimensions



### Specification Information

#### Step 1.

861 ☐

#### Step 2. Size

-3 80.75" wide ☐ +\$6105

#### Step 3. Covers

S standard covers ☐ +\$0

P removable covers ☐ +\$735

#### Step 4. Arm with Literature Storage

N no literature storage ☐ +\$0

#### Step 5. Fire Retardancy

NR not fire retardant (non CTB-133) ☐ +\$0

#### Step 6. Fabric Configuration

1F one fabric ☐ +\$0

MF multiple fabrics ☐ +\$127

#### Step 7. Arm Cap Detail

K solid surface arm caps ☐ +\$0

U upholstered arms ☐ +\$0

W wood arm caps ☐ +\$124

R urethane arm caps ☐ +\$0

#### Step 8. Arm Cap Finish

##### For upholstered arms (U)

SU same as chair arm upholstery ☐ +\$0

##### For urethane arm caps (R)

BK black ☐ +\$124

PW pewter ☐ +\$226

##### For wood arm caps (W)

SF same as chair frame finish ☐ +\$0

##### For solid surface arm caps (K)

58 cameo white ☐ +\$375

ANC antarctica ☐ +\$425

CQ glacier white ☐ +\$375

QB bisque ☐ +\$375

SVG silver gray ☐ +\$425

# Brava Classic Sofa, 80.75" Wide

continued

Nemschoff® Brava Classic

Step 9. Wood Finish		
<b>2U</b>	light brown walnut <input type="checkbox"/>	+\$0
<b>40</b>	dark brown walnut <input type="checkbox"/>	+\$0
<b>5K</b>	honey maple <input type="checkbox"/>	+\$0
<b>ED</b>	aged cherry <input type="checkbox"/>	+\$0
<b>IZ</b>	aged teak <input type="checkbox"/>	+\$0
<b>UL</b>	natural maple <input type="checkbox"/>	+\$0

Step 10. Moisture Barrier Option		
<b>MBN</b>	no moisture barrier <input type="checkbox"/>	+\$0
<b>MBB</b>	moisture barrier back only <input type="checkbox"/>	+\$225
<b>MBS</b>	moisture barrier seat only <input type="checkbox"/>	+\$225
<b>MBX</b>	moisture barrier seat and back <input type="checkbox"/>	+\$450

Step 11. MicrobeCare Selection		
<b>MCN</b>	no MicrobeCare protection <input type="checkbox"/>	+\$0
<b>MCY</b>	MicrobeCare protection <input type="checkbox"/>	+\$100

## Step 12.

### Fabric

*For not fire retardant (non CTB-133) (NR) with one fabric (1F)*

Price Category (Nemschoff) Series 3 <input type="checkbox"/>	+\$0
Price Category (Nemschoff) Series 4 <input type="checkbox"/>	+\$464
Price Category (Nemschoff) Series 5 <input type="checkbox"/>	+\$951
Price Category (Nemschoff) Series 6 <input type="checkbox"/>	+\$1526
Price Category (Nemschoff) Series 7 <input type="checkbox"/>	+\$2108
Price Category (Nemschoff) Series 8 <input type="checkbox"/>	+\$2838

### Seat Fabric

*For not fire retardant (non CTB-133) (NR) with multiple fabrics (MF)*

Price Category (Nemschoff) Series 3 <input type="checkbox"/>	+\$0
Price Category (Nemschoff) Series 4 <input type="checkbox"/>	+\$216
Price Category (Nemschoff) Series 5 <input type="checkbox"/>	+\$419
Price Category (Nemschoff) Series 6 <input type="checkbox"/>	+\$663
Price Category (Nemschoff) Series 7 <input type="checkbox"/>	+\$907
Price Category (Nemschoff) Series 8 <input type="checkbox"/>	+\$1212

## Step 13. Back Fabric

*For not fire retardant (non CTB-133) (NR) with multiple fabrics (MF)*

Price Category (Nemschoff) Series 3 <input type="checkbox"/>	+\$0
Price Category (Nemschoff) Series 4 <input type="checkbox"/>	+\$238
Price Category (Nemschoff) Series 5 <input type="checkbox"/>	+\$461
Price Category (Nemschoff) Series 6 <input type="checkbox"/>	+\$729
Price Category (Nemschoff) Series 7 <input type="checkbox"/>	+\$998
Price Category (Nemschoff) Series 8 <input type="checkbox"/>	+\$1334

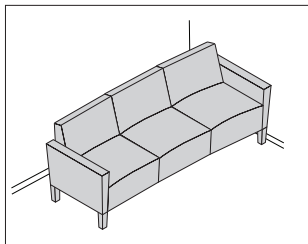
## Step 14. Arm Fabric

*For not fire retardant (non CTB-133) (NR) with multiple fabrics (MF)*

Price Category (Nemschoff) Series 3 <input type="checkbox"/>	+\$0
Price Category (Nemschoff) Series 4 <input type="checkbox"/>	+\$179
Price Category (Nemschoff) Series 5 <input type="checkbox"/>	+\$347
Price Category (Nemschoff) Series 6 <input type="checkbox"/>	+\$545
Price Category (Nemschoff) Series 7 <input type="checkbox"/>	+\$750
Price Category (Nemschoff) Series 8 <input type="checkbox"/>	+\$1000

# Brava Classic Three Seat, 84.75" Wide

861-3



## Product Information

### Description

#### Features:

- Solid maple frame
- Mortise and tenon joinery
- Spring seat construction
- Clean-out design
- Replaceable components
- Upholstered arms
- Non-marring 7/8" rubber-cushioned glides
- Nemschoff® healthcare wood finish
- Indoor Advantage™ Gold Certified

### Notes

Weight—112 lbs

COM yardage:

Single Fabric—12½

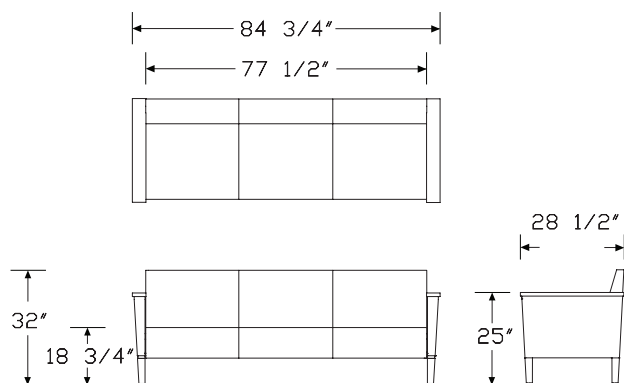
Multiple Fabrics:

Seat—4

Back—4¼

Arms—3

### Dimensions



## Specification Information

### Step 1.

**861-30** [A]

### Step 2. Size

**-4** 84.75" wide [A] +\$6208

### Step 3. Covers

**S** standard covers [A] +\$0  
**P** removable covers [A] +\$746

### Step 4. Arm with Literature Storage

**N** no literature storage [A] +\$0

### Step 5. Fire Retardancy

**NR** not fire retardant (non CTB-133) [A] +\$0

### Step 6. Fabric Configuration

**1F** one fabric [A] +\$0  
**MF** multiple fabrics [A] +\$127

### Step 7. Arm Cap Detail

**K** solid surface arm caps [A] +\$0  
**U** upholstered arms [A] +\$0  
**W** wood arm caps [A] +\$124  
**R** urethane arm caps [A] +\$0

### Step 8. Arm Cap Finish

#### For urethane arm caps (R)

**BK** black [A] +\$124  
**PW** pewter [A] +\$226

#### For wood arm caps (W)

**SF** same as chair frame finish [A] +\$0

#### For upholstered arms (U)

**SU** same as chair arm upholstery [A] +\$0

#### For solid surface arm caps (K)

**58** cameo white [A] +\$375  
**ANC** antarctica [A] +\$425  
**CQ** glacier white [A] +\$375  
**QB** bisque [A] +\$375  
**SVG** silver gray [A] +\$425

# Brava Classic Three Seat, 84.75"

Wide *continued*

Nemschoff® Brava Classic

Step 9. Wood Finish		
<b>0Z</b>	medium cherry <input type="checkbox"/>	+\$0
<b>2U</b>	light brown walnut <input type="checkbox"/>	+\$0
<b>40</b>	dark brown walnut <input type="checkbox"/>	+\$0
<b>5K</b>	honey maple <input type="checkbox"/>	+\$0
<b>ED</b>	aged cherry <input type="checkbox"/>	+\$0
<b>IZ</b>	aged teak <input type="checkbox"/>	+\$0
<b>UL</b>	natural maple <input type="checkbox"/>	+\$0

Step 10. Moisture Barrier Option		
<b>MBN</b>	no moisture barrier <input type="checkbox"/>	+\$0
<b>MBB</b>	moisture barrier back only <input type="checkbox"/>	+\$225
<b>MBS</b>	moisture barrier seat only <input type="checkbox"/>	+\$225
<b>MBX</b>	moisture barrier seat and back <input type="checkbox"/>	+\$450

Step 11. MicrobeCare Selection		
<b>MCN</b>	no MicrobeCare protection <input type="checkbox"/>	+\$0
<b>MCY</b>	MicrobeCare protection <input type="checkbox"/>	+\$100

## Step 12.

### Fabric

*For not fire retardant (non CTB-133) (NR) with one fabric (1F)*

Price Category (Nemschoff) Series 3 <input type="checkbox"/>	+\$0
Price Category (Nemschoff) Series 4 <input type="checkbox"/>	+\$725
Price Category (Nemschoff) Series 5 <input type="checkbox"/>	+\$1484
Price Category (Nemschoff) Series 6 <input type="checkbox"/>	+\$2384
Price Category (Nemschoff) Series 7 <input type="checkbox"/>	+\$3295
Price Category (Nemschoff) Series 8 <input type="checkbox"/>	+\$4433

### Seat Fabric

*For not fire retardant (non CTB-133) (NR) with multiple fabrics (MF)*

Price Category (Nemschoff) Series 3 <input type="checkbox"/>	+\$0
Price Category (Nemschoff) Series 4 <input type="checkbox"/>	+\$340
Price Category (Nemschoff) Series 5 <input type="checkbox"/>	+\$668
Price Category (Nemschoff) Series 6 <input type="checkbox"/>	+\$1061
Price Category (Nemschoff) Series 7 <input type="checkbox"/>	+\$1457
Price Category (Nemschoff) Series 8 <input type="checkbox"/>	+\$1950

## Step 13. Back Fabric

*For not fire retardant (non CTB-133) (NR) with multiple fabrics (MF)*

Price Category (Nemschoff) Series 3 <input type="checkbox"/>	+\$0
Price Category (Nemschoff) Series 4 <input type="checkbox"/>	+\$431
Price Category (Nemschoff) Series 5 <input type="checkbox"/>	+\$851
Price Category (Nemschoff) Series 6 <input type="checkbox"/>	+\$1349
Price Category (Nemschoff) Series 7 <input type="checkbox"/>	+\$1852
Price Category (Nemschoff) Series 8 <input type="checkbox"/>	+\$2485

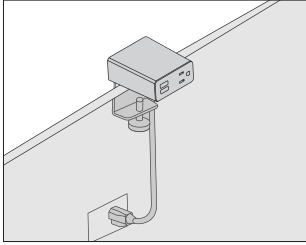
## Step 14. Arm Fabric

*For not fire retardant (non CTB-133) (NR) with multiple fabrics (MF)*

Price Category (Nemschoff) Series 3 <input type="checkbox"/>	+\$0
Price Category (Nemschoff) Series 4 <input type="checkbox"/>	+\$171
Price Category (Nemschoff) Series 5 <input type="checkbox"/>	+\$339
Price Category (Nemschoff) Series 6 <input type="checkbox"/>	+\$537
Price Category (Nemschoff) Series 7 <input type="checkbox"/>	+\$734
Price Category (Nemschoff) Series 8 <input type="checkbox"/>	+\$983

**Power Outlet/USB Port** (Not intended for patient care vicinity; NFPA 99 Healthcare Facilities Code)

NP501.



**Product Information**

**Description**

**Features:**

- This electrical distributor plugs directly into floor, wall, or ceiling drop outlets
- Cable clips and attachment hardware included
- Product is UL listed

**Notes**

Cable clips for cord management are intended for a one-time installation  
A small LED light illuminates through the USB port when the USB version is plugged in and powered

USB ports provide 10-watt power to charge most devices and tablets at full speed

Cord color is predetermined

NP501 and NP502 mountable on Brava Lounge products (Modern, Platform, Classic)

NP503 and NP504 mountable on select Palisade™ products and are available in white only with 6' cord length.

**Specification Information**

**Step 1.**

**NP501.** ☐

**Step 2. Power Type**

**J** 1 simplex receptacle. 1 USB-A. 1 USB-C (Not intended for patient care vicinity; NFPA 99 Healthcare Facilities Code) ☐

**Step 3. Cord/Conduit Length**

**03** 3' cord/conduit ☐

**06** 6' cord/conduit ☐

**10** 10' cord/conduit ☐

**Prices for Steps 1-3.**

	<b>03</b>	<b>06</b>	<b>10</b>
<b>NP501. J</b>	\$355	355	374

**Step 4. Attachment Bracket**

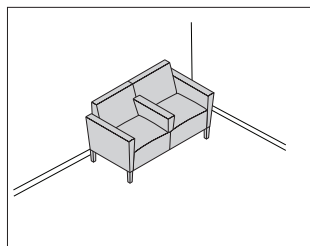
<b>C</b>	Brava Classic lounge seating <input type="checkbox"/>	+\$54
<b>M</b>	Brava Modern lounge seating <input type="checkbox"/>	+\$54
<b>W</b>	Brava Platform lounge seating with wood base <input type="checkbox"/>	+\$54
<b>N</b>	No mounting bracket (mountable on Brava Platform lounge seating with metal base) <input type="checkbox"/>	+\$0

**Step 5. Finish**

<b>91</b>	white (CP) <input type="checkbox"/>	+\$0
<b>BK</b>	black <input type="checkbox"/>	+\$0



# Brava Platform Two Seat with Divider 860-2 Arm, 54.5" Wide



## Product Information

### Description

#### Features:

- Solid maple frame
- Mortise and tenon joinery
- Spring seat construction
- Clean-out design
- Replaceable components
- Upholstered arms
- Non-marring 7/8" rubber-cushioned glides
- Nemschoff® healthcare wood finish
- Indoor Advantage™ Gold Certified

### Notes

Weight—91 lbs

COM yardage:

Single Fabric—7¼

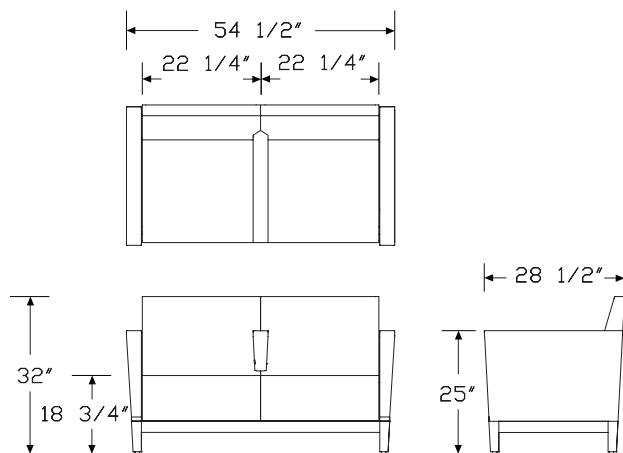
Multiple Fabrics:

Seat—2½

Back—3

Arms—3½

### Dimensions



## Specification Information

### Step 1.

860 ☐

### Step 2. Size

-25 54.5" wide ☐ +\$5817

### Step 3. Covers

S standard covers ☐ +\$0  
P removable covers ☐ +\$693

### Step 4. Arm with Literature Storage

N no literature storage ☐ +\$0

### Step 5. Base Material

S metal base ☐ +\$569  
W wood base ☐ +\$0

### Step 6. Fire Retardancy

NR not fire retardant (non CTB-133) ☐ +\$0

### Step 7. Fabric Configuration

1F one fabric ☐ +\$0  
MF multiple fabrics ☐ +\$127

### Step 8. Arm Cap Detail

U upholstered arms ☐ +\$0  
W wood arm caps ☐ +\$186  
R urethane arm caps ☐ +\$0  
K solid surface arm caps ☐ +\$0

### Step 9. Arm Cap Finish

#### For upholstered arms (U)

SU same as chair arm upholstery ☐ +\$0

#### For wood arm caps (W)

SF same as chair frame finish ☐ +\$0

#### For urethane arm caps (R)

BK black ☐ +\$186  
PW pewter ☐ +\$339

# Brava Platform Two Seat with Divider

## Arm, 54.5" Wide *continued*

### For solid surface arm caps (K)

<b>58</b>	cameo white <input type="checkbox"/>	+\$565
<b>ANC</b>	antarctica <input type="checkbox"/>	+\$725
<b>CQ</b>	glacier white <input type="checkbox"/>	+\$565
<b>QB</b>	bisque <input type="checkbox"/>	+\$565
<b>SVG</b>	silver gray <input type="checkbox"/>	+\$725

### Step 10. Wood Finish

### For wood base (W)

<b>0Z</b>	medium cherry <input type="checkbox"/>	+\$0
<b>2U</b>	light brown walnut <input type="checkbox"/>	+\$0
<b>40</b>	dark brown walnut <input type="checkbox"/>	+\$0
<b>5K</b>	honey maple <input type="checkbox"/>	+\$0
<b>ED</b>	aged cherry <input type="checkbox"/>	+\$0
<b>IZ</b>	aged teak <input type="checkbox"/>	+\$0
<b>UL</b>	natural maple <input type="checkbox"/>	+\$0

### For metal base (S) with same as chair frame finish (SF)

<b>0Z</b>	medium cherry <input type="checkbox"/>	+\$0
<b>2U</b>	light brown walnut <input type="checkbox"/>	+\$0
<b>40</b>	dark brown walnut <input type="checkbox"/>	+\$0
<b>5K</b>	honey maple <input type="checkbox"/>	+\$0
<b>ED</b>	aged cherry <input type="checkbox"/>	+\$0
<b>IZ</b>	aged teak <input type="checkbox"/>	+\$0
<b>UL</b>	natural maple <input type="checkbox"/>	+\$0

### Step 11. Powdercoat Finish

### For metal base (S)

<b>BK</b>	black <input type="checkbox"/>	+\$0
<b>G1</b>	graphite textured <input type="checkbox"/>	+\$0
<b>MSS</b>	metallic silver smooth <input type="checkbox"/>	+\$0
<b>MST</b>	metallic silver textured <input type="checkbox"/>	+\$0
<b>XTS</b>	titanium smooth <input type="checkbox"/>	+\$0
<b>XTT</b>	titanium textured <input type="checkbox"/>	+\$0

### Step 12. Moisture Barrier Option

<b>MBN</b>	no moisture barrier <input type="checkbox"/>	+\$0
<b>MBB</b>	moisture barrier back only <input type="checkbox"/>	+\$150
<b>MBS</b>	moisture barrier seat only <input type="checkbox"/>	+\$150
<b>MBX</b>	moisture barrier seat and back <input type="checkbox"/>	+\$300

### Step 13. MicrobeCare Selection

<b>MCN</b>	no MicrobeCare protection <input type="checkbox"/>	+\$0
<b>MCY</b>	MicrobeCare protection <input type="checkbox"/>	+\$75

### Step 14.

### Fabric

### For not fire retardant (non CTB-133) (NR) with one fabric (1F)

Price Category (Nemschoff) Series 3 <input type="checkbox"/>	+\$0
Price Category (Nemschoff) Series 4 <input type="checkbox"/>	+\$421
Price Category (Nemschoff) Series 5 <input type="checkbox"/>	+\$862
Price Category (Nemschoff) Series 6 <input type="checkbox"/>	+\$1383
Price Category (Nemschoff) Series 7 <input type="checkbox"/>	+\$1911
Price Category (Nemschoff) Series 8 <input type="checkbox"/>	+\$2571

### Seat Fabric

### For not fire retardant (non CTB-133) (NR) with multiple fabrics (MF)

Price Category (Nemschoff) Series 3 <input type="checkbox"/>	+\$0
Price Category (Nemschoff) Series 4 <input type="checkbox"/>	+\$161
Price Category (Nemschoff) Series 5 <input type="checkbox"/>	+\$307
Price Category (Nemschoff) Series 6 <input type="checkbox"/>	+\$481
Price Category (Nemschoff) Series 7 <input type="checkbox"/>	+\$656
Price Category (Nemschoff) Series 8 <input type="checkbox"/>	+\$874

### Step 15. Back Fabric

### For not fire retardant (non CTB-133) (NR) with multiple fabrics (MF)

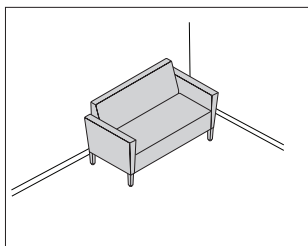
Price Category (Nemschoff) Series 3 <input type="checkbox"/>	+\$0
Price Category (Nemschoff) Series 4 <input type="checkbox"/>	+\$192
Price Category (Nemschoff) Series 5 <input type="checkbox"/>	+\$367
Price Category (Nemschoff) Series 6 <input type="checkbox"/>	+\$575
Price Category (Nemschoff) Series 7 <input type="checkbox"/>	+\$786
Price Category (Nemschoff) Series 8 <input type="checkbox"/>	+\$1050

### Step 16. Arm Fabric

### For not fire retardant (non CTB-133) (NR) with multiple fabrics (MF)

Price Category (Nemschoff) Series 3 <input type="checkbox"/>	+\$0
Price Category (Nemschoff) Series 4 <input type="checkbox"/>	+\$256
Price Category (Nemschoff) Series 5 <input type="checkbox"/>	+\$491
Price Category (Nemschoff) Series 6 <input type="checkbox"/>	+\$769
Price Category (Nemschoff) Series 7 <input type="checkbox"/>	+\$1050
Price Category (Nemschoff) Series 8 <input type="checkbox"/>	+\$1399





### Product Information

#### Description

##### Features:

- Solid maple frame
- Mortise and tenon joinery
- Spring seat construction
- Clean-out design
- Replaceable components
- Upholstered arms
- Non-marring  $\frac{7}{8}$ " rubber-cushioned glides
- Nemschoff® healthcare wood finish
- Indoor Advantage™ Gold Certified

#### Notes

Weight—78 lbs

COM yardage:

Single Fabric—6¼

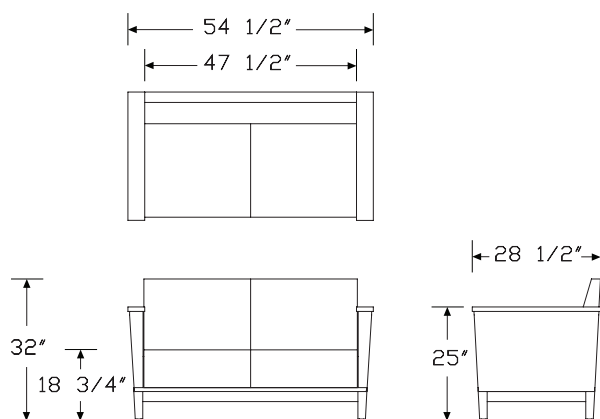
Multiple Fabrics:

Seat—2

Back—2½

Arms—3

#### Dimensions



### Specification Information

#### Step 1.

860 ☐ A

#### Step 2. Size

-2 54.5" wide ☐ A +\$5388

#### Step 3. Covers

S standard covers ☐ A +\$0

P removable covers ☐ A +\$641

#### Step 4. Arm with Literature Storage

N no literature storage ☐ A +\$0

#### Step 5. Base Material

S metal base ☐ A +\$569

W wood base ☐ A +\$0

#### Step 6. Fire Retardancy

NR not fire retardant (non CTB-133) ☐ A +\$0

#### Step 7. Fabric Configuration

1F one fabric ☐ A +\$0

MF multiple fabrics ☐ A +\$127

#### Step 8. Arm Cap Detail

U upholstered arms ☐ A +\$0

W wood arm caps ☐ A +\$124

R urethane arm caps ☐ A +\$0

K solid surface arm caps ☐ A +\$0

#### Step 9. Arm Cap Finish

##### For upholstered arms (U)

SU same as chair arm upholstery ☐ A +\$0

##### For wood arm caps (W)

SF same as chair frame finish ☐ A +\$0

##### For urethane arm caps (R)

BK black ☐ A +\$124

PW pewter ☐ A +\$226

# Brava Platform Settee, 54.5" Wide

continued

Nemschoff® Brava Platform

## For solid surface arm caps (K)

<b>58</b>	cameo white <input type="checkbox"/>	+\$375
<b>ANC</b>	antarctica <input type="checkbox"/>	+\$425
<b>CQ</b>	glacier white <input type="checkbox"/>	+\$375
<b>QB</b>	bisque <input type="checkbox"/>	+\$375
<b>SVG</b>	silver gray <input type="checkbox"/>	+\$425

## Step 10. Wood Finish

### For wood base (W)

<b>0Z</b>	medium cherry <input type="checkbox"/>	+\$0
<b>2U</b>	light brown walnut <input type="checkbox"/>	+\$0
<b>40</b>	dark brown walnut <input type="checkbox"/>	+\$0
<b>5K</b>	honey maple <input type="checkbox"/>	+\$0
<b>ED</b>	aged cherry <input type="checkbox"/>	+\$0
<b>IZ</b>	aged teak <input type="checkbox"/>	+\$0
<b>UL</b>	natural maple <input type="checkbox"/>	+\$0

### For metal base (S) with same as chair frame finish (SF)

<b>0Z</b>	medium cherry <input type="checkbox"/>	+\$0
<b>2U</b>	light brown walnut <input type="checkbox"/>	+\$0
<b>40</b>	dark brown walnut <input type="checkbox"/>	+\$0
<b>5K</b>	honey maple <input type="checkbox"/>	+\$0
<b>ED</b>	aged cherry <input type="checkbox"/>	+\$0
<b>IZ</b>	aged teak <input type="checkbox"/>	+\$0
<b>UL</b>	natural maple <input type="checkbox"/>	+\$0

## Step 11. Powdercoat Finish

### For metal base (S)

<b>BK</b>	black <input type="checkbox"/>	+\$0
<b>G1</b>	graphite textured <input type="checkbox"/>	+\$0
<b>MSS</b>	metallic silver smooth <input type="checkbox"/>	+\$0
<b>MST</b>	metallic silver textured <input type="checkbox"/>	+\$0
<b>XTS</b>	titanium smooth <input type="checkbox"/>	+\$0
<b>XTT</b>	titanium textured <input type="checkbox"/>	+\$0

## Step 12. Moisture Barrier Option

<b>MBN</b>	no moisture barrier <input type="checkbox"/>	+\$0
<b>MBB</b>	moisture barrier back only <input type="checkbox"/>	+\$150
<b>MBS</b>	moisture barrier seat only <input type="checkbox"/>	+\$150
<b>MBX</b>	moisture barrier seat and back <input type="checkbox"/>	+\$300

## Step 13. MicrobeCare Selection

<b>MCN</b>	no MicrobeCare protection <input type="checkbox"/>	+\$0
<b>MCY</b>	MicrobeCare protection <input type="checkbox"/>	+\$100

## Step 14.

### Fabric

#### For not fire retardant (non CTB-133) (NR) with one fabric (1F)

Price Category (Nemschoff) Series 3 <input type="checkbox"/>	+\$0
Price Category (Nemschoff) Series 4 <input type="checkbox"/>	+\$363
Price Category (Nemschoff) Series 5 <input type="checkbox"/>	+\$743
Price Category (Nemschoff) Series 6 <input type="checkbox"/>	+\$1192
Price Category (Nemschoff) Series 7 <input type="checkbox"/>	+\$1647
Price Category (Nemschoff) Series 8 <input type="checkbox"/>	+\$2216

### Seat Fabric

#### For not fire retardant (non CTB-133) (NR) with multiple fabrics (MF)

Price Category (Nemschoff) Series 3 <input type="checkbox"/>	+\$0
Price Category (Nemschoff) Series 4 <input type="checkbox"/>	+\$148
Price Category (Nemschoff) Series 5 <input type="checkbox"/>	+\$281
Price Category (Nemschoff) Series 6 <input type="checkbox"/>	+\$440
Price Category (Nemschoff) Series 7 <input type="checkbox"/>	+\$598
Price Category (Nemschoff) Series 8 <input type="checkbox"/>	+\$801

## Step 15. Back Fabric

#### For not fire retardant (non CTB-133) (NR) with multiple fabrics (MF)

Price Category (Nemschoff) Series 3 <input type="checkbox"/>	+\$0
Price Category (Nemschoff) Series 4 <input type="checkbox"/>	+\$187
Price Category (Nemschoff) Series 5 <input type="checkbox"/>	+\$355
Price Category (Nemschoff) Series 6 <input type="checkbox"/>	+\$554
Price Category (Nemschoff) Series 7 <input type="checkbox"/>	+\$756
Price Category (Nemschoff) Series 8 <input type="checkbox"/>	+\$1008

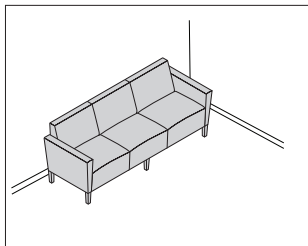
## Step 16. Arm Fabric

#### For not fire retardant (non CTB-133) (NR) with multiple fabrics (MF)

Price Category (Nemschoff) Series 3 <input type="checkbox"/>	+\$0
Price Category (Nemschoff) Series 4 <input type="checkbox"/>	+\$203
Price Category (Nemschoff) Series 5 <input type="checkbox"/>	+\$385
Price Category (Nemschoff) Series 6 <input type="checkbox"/>	+\$602
Price Category (Nemschoff) Series 7 <input type="checkbox"/>	+\$823
Price Category (Nemschoff) Series 8 <input type="checkbox"/>	+\$1093

# Brava Platform Three Seat, 80.75" Wide

860-3



## Product Information

### Description

#### Features:

- Solid maple frame
- Mortise and tenon joinery
- Spring seat construction
- Clean-out design
- Replaceable components
- Upholstered arms
- Non-marring 7/8" rubber-cushioned glides
- Nemschoff® healthcare wood finish
- Indoor Advantage™ Gold Certified

### Notes

Weight—117 lbs

COM yardage:

Single Fabric—9

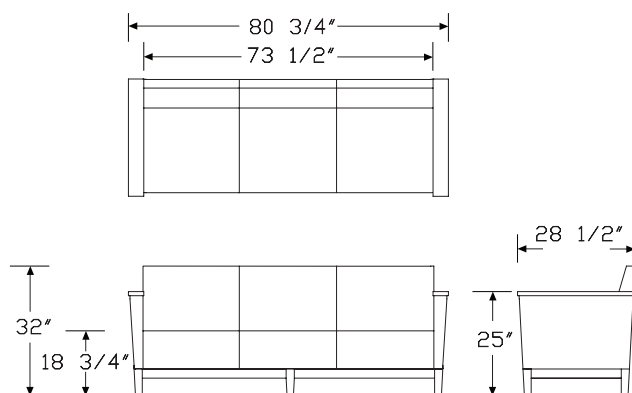
Multiple Fabrics:

Seat—4¼

Back—5½

Arms—3

### Dimensions



## Specification Information

### Step 1.

860 ☐ A

### Step 2. Size

-30 80.75" wide ☐ A +\$7804

### Step 3. Covers

S standard covers ☐ A +\$0  
P removable covers ☐ A +\$927

### Step 4. Arm with Literature Storage

N no literature storage ☐ A +\$0

### Step 5. Base Material

S metal base ☐ A +\$813  
W wood base ☐ A +\$0

### Step 6. Fire Retardancy

NR not fire retardant (non CTB-133) ☐ A +\$0

### Step 7. Fabric Configuration

1F one fabric ☐ A +\$0  
MF multiple fabrics ☐ A +\$127

### Step 8. Arm Cap Detail

U upholstered arms ☐ A +\$0  
W wood arm caps ☐ A +\$124  
R urethane arm caps ☐ A +\$0  
K solid surface arm caps ☐ A +\$0

### Step 9. Arm Cap Finish

#### For upholstered arms (U)

SU same as chair arm upholstery ☐ A +\$0

#### For wood arm caps (W)

SF same as chair frame finish ☐ A +\$0

#### For urethane arm caps (R)

BK black ☐ A +\$124  
PW pewter ☐ A +\$226

# Brava Platform Three Seat, 80.75"

Wide *continued*

Nemschoff® Brava Platform

## For solid surface arm caps (K)

<b>58</b>	cameo white <input type="checkbox"/>	+\$375
<b>ANC</b>	antarctica <input type="checkbox"/>	+\$425
<b>CQ</b>	glacier white <input type="checkbox"/>	+\$375
<b>QB</b>	bisque <input type="checkbox"/>	+\$375
<b>SVG</b>	silver gray <input type="checkbox"/>	+\$425

## Step 10. Wood Finish

### For wood base (W)

<b>0Z</b>	medium cherry <input type="checkbox"/>	+\$0
<b>2U</b>	light brown walnut <input type="checkbox"/>	+\$0
<b>40</b>	dark brown walnut <input type="checkbox"/>	+\$0
<b>5K</b>	honey maple <input type="checkbox"/>	+\$0
<b>ED</b>	aged cherry <input type="checkbox"/>	+\$0
<b>IZ</b>	aged teak <input type="checkbox"/>	+\$0
<b>UL</b>	natural maple <input type="checkbox"/>	+\$0

### For metal base (S) with same as chair frame finish (SF)

<b>0Z</b>	medium cherry <input type="checkbox"/>	+\$0
<b>2U</b>	light brown walnut <input type="checkbox"/>	+\$0
<b>40</b>	dark brown walnut <input type="checkbox"/>	+\$0
<b>5K</b>	honey maple <input type="checkbox"/>	+\$0
<b>ED</b>	aged cherry <input type="checkbox"/>	+\$0
<b>IZ</b>	aged teak <input type="checkbox"/>	+\$0
<b>UL</b>	natural maple <input type="checkbox"/>	+\$0

## Step 11. Powdercoat Finish

### For metal base (S)

<b>BK</b>	black <input type="checkbox"/>	+\$0
<b>G1</b>	graphite textured <input type="checkbox"/>	+\$0
<b>MSS</b>	metallic silver smooth <input type="checkbox"/>	+\$0
<b>MST</b>	metallic silver textured <input type="checkbox"/>	+\$0
<b>XTS</b>	titanium smooth <input type="checkbox"/>	+\$0
<b>XTT</b>	titanium textured <input type="checkbox"/>	+\$0

## Step 12. Moisture Barrier Option

<b>MBN</b>	no moisture barrier <input type="checkbox"/>	+\$0
<b>MBB</b>	moisture barrier back only <input type="checkbox"/>	+\$225
<b>MBS</b>	moisture barrier seat only <input type="checkbox"/>	+\$225
<b>MBX</b>	moisture barrier seat and back <input type="checkbox"/>	+\$450

## Step 13. MicrobeCare Selection

<b>MCN</b>	no MicrobeCare protection <input type="checkbox"/>	+\$0
<b>MCY</b>	MicrobeCare protection <input type="checkbox"/>	+\$100

## Step 14.

### Fabric

#### For not fire retardant (non CTB-133) (NR) with one fabric (1F)

Price Category (Nemschoff) Series 3 <input type="checkbox"/>	+\$0
Price Category (Nemschoff) Series 4 <input type="checkbox"/>	+\$522
Price Category (Nemschoff) Series 5 <input type="checkbox"/>	+\$1068
Price Category (Nemschoff) Series 6 <input type="checkbox"/>	+\$1717
Price Category (Nemschoff) Series 7 <input type="checkbox"/>	+\$2373
Price Category (Nemschoff) Series 8 <input type="checkbox"/>	+\$3193

### Seat Fabric

#### For not fire retardant (non CTB-133) (NR) with multiple fabrics (MF)

Price Category (Nemschoff) Series 3 <input type="checkbox"/>	+\$0
Price Category (Nemschoff) Series 4 <input type="checkbox"/>	+\$211
Price Category (Nemschoff) Series 5 <input type="checkbox"/>	+\$421
Price Category (Nemschoff) Series 6 <input type="checkbox"/>	+\$670
Price Category (Nemschoff) Series 7 <input type="checkbox"/>	+\$922
Price Category (Nemschoff) Series 8 <input type="checkbox"/>	+\$1237

## Step 15. Back Fabric

#### For not fire retardant (non CTB-133) (NR) with multiple fabrics (MF)

Price Category (Nemschoff) Series 3 <input type="checkbox"/>	+\$0
Price Category (Nemschoff) Series 4 <input type="checkbox"/>	+\$275
Price Category (Nemschoff) Series 5 <input type="checkbox"/>	+\$550
Price Category (Nemschoff) Series 6 <input type="checkbox"/>	+\$875
Price Category (Nemschoff) Series 7 <input type="checkbox"/>	+\$1208
Price Category (Nemschoff) Series 8 <input type="checkbox"/>	+\$1621

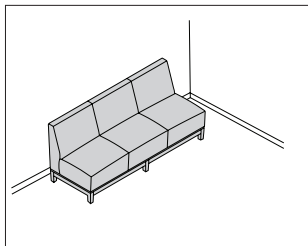
## Step 16. Arm Fabric

#### For not fire retardant (non CTB-133) (NR) with multiple fabrics (MF)

Price Category (Nemschoff) Series 3 <input type="checkbox"/>	+\$0
Price Category (Nemschoff) Series 4 <input type="checkbox"/>	+\$163
Price Category (Nemschoff) Series 5 <input type="checkbox"/>	+\$324
Price Category (Nemschoff) Series 6 <input type="checkbox"/>	+\$516
Price Category (Nemschoff) Series 7 <input type="checkbox"/>	+\$710
Price Category (Nemschoff) Series 8 <input type="checkbox"/>	+\$956

# Brava Platform Sofa without Arms, 79" Wide

860-3



## Product Information

### Description

#### Features:

- Solid maple frame
- Mortise and tenon joinery
- Spring seat construction
- Clean-out design
- Replaceable components
- Upholstered arms
- Non-marring 7/8" rubber-cushioned glides
- Nemschoff® healthcare wood finish
- Indoor Advantage™ Gold Certified

### Notes

Weight—100 lbs

COM yardage:

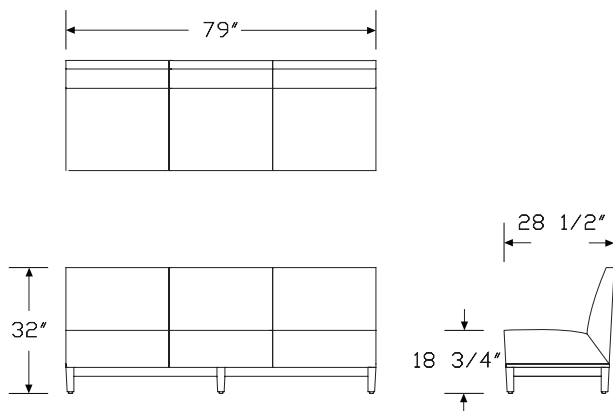
Single Fabric—9½

Multiple Fabrics:

Seat—4½

Back—5¾

## Dimensions



## Specification Information

### Step 1.

860 ☐

### Step 2. Size

-31 79" wide ☐ +\$7069

### Step 3. Covers

S standard covers ☐ +\$0  
P removable covers ☐ +\$842

### Step 4. Base Material

S metal base ☐ +\$813  
W wood base ☐ +\$0

### Step 5. Fire Retardancy

NR not fire retardant (non CTB-133) ☐ +\$0

### Step 6. Fabric Configuration

1F one fabric ☐ +\$0  
MF multiple fabrics ☐ +\$127

### Step 7. Wood Finish

#### For wood base (W)

0Z medium cherry ☐ +\$0  
2U light brown walnut ☐ +\$0  
40 dark brown walnut ☐ +\$0  
5K honey maple ☐ +\$0  
ED aged cherry ☐ +\$0  
IZ aged teak ☐ +\$0  
UL natural maple ☐ +\$0

### Step 8. Powdercoat Finish

#### For metal base (S)

BK black ☐ +\$0  
G1 graphite textured ☐ +\$0  
MSS metallic silver smooth ☐ +\$0  
MST metallic silver textured ☐ +\$0  
XTS titanium smooth ☐ +\$0  
XTT titanium textured ☐ +\$0

### Step 9. Moisture Barrier Option

MBN no moisture barrier ☐ +\$0  
MBB moisture barrier back only ☐ +\$225  
MBS moisture barrier seat only ☐ +\$225  
MBX moisture barrier seat and back ☐ +\$450

Brava Platform Sofa without Arms,  
79" Wide *continued*

Step 10. MicrobeCare Selection

<b>MCN</b>	no MicrobeCare protection	<input type="checkbox"/>	+\$0
<b>MCY</b>	MicrobeCare protection	<input type="checkbox"/>	+\$100

Step 11.

Fabric

*For not fire retardant (non CTB-133) (NR) with one fabric (1F)*

Price Category (Nemschoff) Series 3	<input type="checkbox"/>	+\$0
Price Category (Nemschoff) Series 4	<input type="checkbox"/>	+\$552
Price Category (Nemschoff) Series 5	<input type="checkbox"/>	+\$1127
Price Category (Nemschoff) Series 6	<input type="checkbox"/>	+\$1813
Price Category (Nemschoff) Series 7	<input type="checkbox"/>	+\$2504
Price Category (Nemschoff) Series 8	<input type="checkbox"/>	+\$3369

Seat Fabric

*For not fire retardant (non CTB-133) (NR) with multiple fabrics (MF)*

Price Category (Nemschoff) Series 3	<input type="checkbox"/>	+\$0
Price Category (Nemschoff) Series 4	<input type="checkbox"/>	+\$301
Price Category (Nemschoff) Series 5	<input type="checkbox"/>	+\$601
Price Category (Nemschoff) Series 6	<input type="checkbox"/>	+\$960
Price Category (Nemschoff) Series 7	<input type="checkbox"/>	+\$1319
Price Category (Nemschoff) Series 8	<input type="checkbox"/>	+\$1771

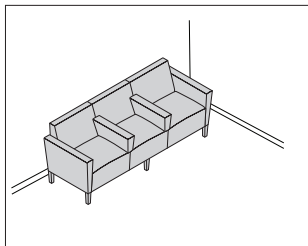
Step 12. Back Fabric

*For not fire retardant (non CTB-133) (NR) with multiple fabrics (MF)*

Price Category (Nemschoff) Series 3	<input type="checkbox"/>	+\$0
Price Category (Nemschoff) Series 4	<input type="checkbox"/>	+\$197
Price Category (Nemschoff) Series 5	<input type="checkbox"/>	+\$374
Price Category (Nemschoff) Series 6	<input type="checkbox"/>	+\$587
Price Category (Nemschoff) Series 7	<input type="checkbox"/>	+\$802
Price Category (Nemschoff) Series 8	<input type="checkbox"/>	+\$1069

# Brava Platform Three Seat with Divider Arms, 80.75" Wide

860-3



## Product Information

### Description

#### Features:

- Solid maple frame
- Mortise and tenon joinery
- Spring seat construction
- Clean-out design
- Replaceable components
- Upholstered arms
- Non-marring 7/8" rubber-cushioned glides
- Nemschoff® healthcare wood finish
- Indoor Advantage™ Gold Certified

### Notes

Weight—131 lbs

COM yardage:

Single Fabric—10

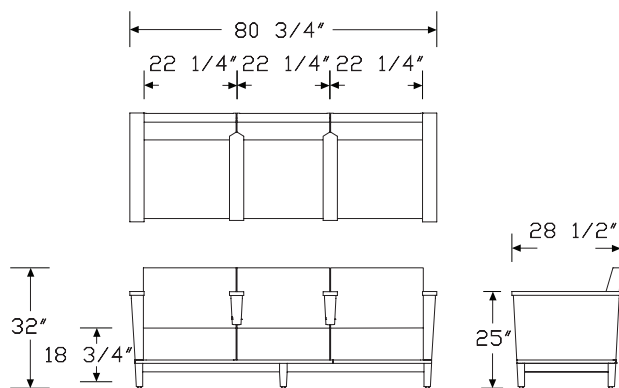
Multiple Fabrics:

Seat—3¾

Back—4

Arms—3¾

### Dimensions



## Specification Information

### Step 1.

860 A

### Step 2. Size

-35 80.75" wide A +\$8369

### Step 3. Covers

S standard covers A +\$0

P removable covers A +\$996

### Step 4. Arm with Literature Storage

N no literature storage A +\$0

### Step 5. Base Material

S metal base A +\$813

W wood base A +\$0

### Step 6. Fire Retardancy

NR not fire retardant (non CTB-133) A +\$0

### Step 7. Fabric Configuration

1F one fabric A +\$0

MF multiple fabrics A +\$127

### Step 8. Arm Cap Detail

U upholstered arms A +\$0

W wood arm caps A +\$248

R urethane arm caps A +\$0

K solid surface arm caps A +\$0

### Step 9. Arm Cap Finish

#### For upholstered arms (U)

SU same as chair arm upholstery A +\$0

#### For wood arm caps (W)

SF same as chair frame finish A +\$0

#### For urethane arm caps (R)

BK black A +\$248

PW pewter A +\$452

# Brava Platform Three Seat with Divider Arms, 80.75" Wide *continued*

## For solid surface arm caps (K)

<b>58</b>	cameo white <input type="checkbox"/>	+\$750
<b>ANC</b>	antarctica <input type="checkbox"/>	+\$950
<b>CQ</b>	glacier white <input type="checkbox"/>	+\$750
<b>QB</b>	bisque <input type="checkbox"/>	+\$750
<b>SVG</b>	silver gray <input type="checkbox"/>	+\$950

## Step 10. Wood Finish

### For metal base (S) with same as chair frame finish (SF)

<b>0Z</b>	medium cherry <input type="checkbox"/>	+\$0
<b>2U</b>	light brown walnut <input type="checkbox"/>	+\$0
<b>40</b>	dark brown walnut <input type="checkbox"/>	+\$0
<b>5K</b>	honey maple <input type="checkbox"/>	+\$0
<b>ED</b>	aged cherry <input type="checkbox"/>	+\$0
<b>IZ</b>	aged teak <input type="checkbox"/>	+\$0
<b>UL</b>	natural maple <input type="checkbox"/>	+\$0

### For wood base (W)

<b>0Z</b>	medium cherry <input type="checkbox"/>	+\$0
<b>2U</b>	light brown walnut <input type="checkbox"/>	+\$0
<b>40</b>	dark brown walnut <input type="checkbox"/>	+\$0
<b>5K</b>	honey maple <input type="checkbox"/>	+\$0
<b>ED</b>	aged cherry <input type="checkbox"/>	+\$0
<b>IZ</b>	aged teak <input type="checkbox"/>	+\$0
<b>UL</b>	natural maple <input type="checkbox"/>	+\$0

## Step 11. Powdercoat Finish

### For metal base (S)

<b>BK</b>	black <input type="checkbox"/>	+\$0
<b>G1</b>	graphite textured <input type="checkbox"/>	+\$0
<b>MSS</b>	metallic silver smooth <input type="checkbox"/>	+\$0
<b>MST</b>	metallic silver textured <input type="checkbox"/>	+\$0
<b>XTS</b>	titanium smooth <input type="checkbox"/>	+\$0
<b>XTT</b>	titanium textured <input type="checkbox"/>	+\$0

## Step 12. Moisture Barrier Option

<b>MBN</b>	no moisture barrier <input type="checkbox"/>	+\$0
<b>MBB</b>	moisture barrier back only <input type="checkbox"/>	+\$225
<b>MBS</b>	moisture barrier seat only <input type="checkbox"/>	+\$225
<b>MBX</b>	moisture barrier seat and back <input type="checkbox"/>	+\$450

## Step 13. MicrobeCare Selection

<b>MCN</b>	no MicrobeCare protection <input type="checkbox"/>	+\$0
<b>MCY</b>	MicrobeCare protection <input type="checkbox"/>	+\$100

## Step 14.

### Fabric

#### For not fire retardant (non CTB-133) (NR) with one fabric (1F)

Price Category (Nemschoff) Series 3 <input type="checkbox"/>	+\$0
Price Category (Nemschoff) Series 4 <input type="checkbox"/>	+\$580
Price Category (Nemschoff) Series 5 <input type="checkbox"/>	+\$1187
Price Category (Nemschoff) Series 6 <input type="checkbox"/>	+\$1907
Price Category (Nemschoff) Series 7 <input type="checkbox"/>	+\$2636
Price Category (Nemschoff) Series 8 <input type="checkbox"/>	+\$3547

### Seat Fabric

#### For not fire retardant (non CTB-133) (NR) with multiple fabrics (MF)

Price Category (Nemschoff) Series 3 <input type="checkbox"/>	+\$0
Price Category (Nemschoff) Series 4 <input type="checkbox"/>	+\$201
Price Category (Nemschoff) Series 5 <input type="checkbox"/>	+\$401
Price Category (Nemschoff) Series 6 <input type="checkbox"/>	+\$640
Price Category (Nemschoff) Series 7 <input type="checkbox"/>	+\$880
Price Category (Nemschoff) Series 8 <input type="checkbox"/>	+\$1179

## Step 15. Back Fabric

#### For not fire retardant (non CTB-133) (NR) with multiple fabrics (MF)

Price Category (Nemschoff) Series 3 <input type="checkbox"/>	+\$0
Price Category (Nemschoff) Series 4 <input type="checkbox"/>	+\$262
Price Category (Nemschoff) Series 5 <input type="checkbox"/>	+\$523
Price Category (Nemschoff) Series 6 <input type="checkbox"/>	+\$834
Price Category (Nemschoff) Series 7 <input type="checkbox"/>	+\$1150
Price Category (Nemschoff) Series 8 <input type="checkbox"/>	+\$1543

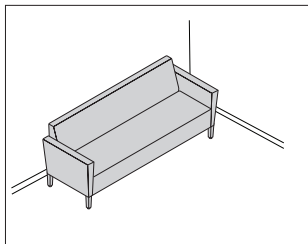
## Step 16. Arm Fabric

#### For not fire retardant (non CTB-133) (NR) with multiple fabrics (MF)

Price Category (Nemschoff) Series 3 <input type="checkbox"/>	+\$0
Price Category (Nemschoff) Series 4 <input type="checkbox"/>	+\$257
Price Category (Nemschoff) Series 5 <input type="checkbox"/>	+\$514
Price Category (Nemschoff) Series 6 <input type="checkbox"/>	+\$819
Price Category (Nemschoff) Series 7 <input type="checkbox"/>	+\$1129
Price Category (Nemschoff) Series 8 <input type="checkbox"/>	+\$1514



# Brava Platform Sofa with Continuous Cushion, 80.75" Wide 860-3



## Product Information

### Description

#### Features:

- Solid maple frame
- Mortise and tenon joinery
- Spring seat construction
- Clean-out design
- Replaceable components
- Upholstered arms
- Non-marring 7/8" rubber-cushioned glides
- Nemschoff® healthcare wood finish
- Indoor Advantage™ Gold Certified

### Notes

Weight—104 lbs

COM yardage:

Single Fabric—8

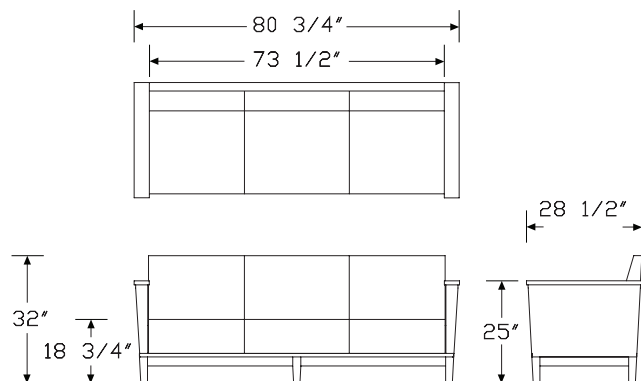
Multiple Fabrics:

Seat—3¼

Back—3½

Arms—3

### Dimensions



## Specification Information

### Step 1.

860 ☐

### Step 2. Size

-3 80.75" wide ☐ +\$7810

### Step 3. Covers

S standard covers ☐ +\$0

P removable covers ☐ +\$928

### Step 4. Arm with Literature Storage

N no literature storage ☐ +\$0

### Step 5. Base Material

S metal base ☐ +\$813

W wood base ☐ +\$0

### Step 6. Fire Retardancy

NR not fire retardant (non CTB-133) ☐ +\$0

### Step 7. Fabric Configuration

1F one fabric ☐ +\$0

MF multiple fabrics ☐ +\$127

### Step 8. Arm Cap Detail

U upholstered arms ☐ +\$0

W wood arm caps ☐ +\$124

R urethane arm caps ☐ +\$0

K solid surface arm caps ☐ +\$0

### Step 9. Arm Cap Finish

#### For upholstered arms (U)

SU same as chair arm upholstery ☐ +\$0

#### For wood arm caps (W)

SF same as chair frame finish ☐ +\$0

#### For urethane arm caps (R)

BK black ☐ +\$124

PW pewter ☐ +\$226

# Brava Platform Sofa with Continuous Cushion, 80.75" Wide *continued*

Nemschoff® Brava Platform

## For solid surface arm caps (K)

<b>58</b>	cameo white <input type="checkbox"/>	+\$375
<b>ANC</b>	antarctica <input type="checkbox"/>	+\$425
<b>CQ</b>	glacier white <input type="checkbox"/>	+\$375
<b>QB</b>	bisque <input type="checkbox"/>	+\$375
<b>SVG</b>	silver gray <input type="checkbox"/>	+\$425

## Step 10. Wood Finish

### For wood base (W)

<b>0Z</b>	medium cherry <input type="checkbox"/>	+\$0
<b>2U</b>	light brown walnut <input type="checkbox"/>	+\$0
<b>40</b>	dark brown walnut <input type="checkbox"/>	+\$0
<b>5K</b>	honey maple <input type="checkbox"/>	+\$0
<b>ED</b>	aged cherry <input type="checkbox"/>	+\$0
<b>IZ</b>	aged teak <input type="checkbox"/>	+\$0
<b>UL</b>	natural maple <input type="checkbox"/>	+\$0

### For metal base (S) with same as chair frame finish (SF)

<b>0Z</b>	medium cherry <input type="checkbox"/>	+\$0
<b>2U</b>	light brown walnut <input type="checkbox"/>	+\$0
<b>40</b>	dark brown walnut <input type="checkbox"/>	+\$0
<b>5K</b>	honey maple <input type="checkbox"/>	+\$0
<b>ED</b>	aged cherry <input type="checkbox"/>	+\$0
<b>IZ</b>	aged teak <input type="checkbox"/>	+\$0
<b>UL</b>	natural maple <input type="checkbox"/>	+\$0

## Step 11. Powdercoat Finish

### For metal base (S)

<b>BK</b>	black <input type="checkbox"/>	+\$0
<b>G1</b>	graphite textured <input type="checkbox"/>	+\$0
<b>MSS</b>	metallic silver smooth <input type="checkbox"/>	+\$0
<b>MST</b>	metallic silver textured <input type="checkbox"/>	+\$0
<b>XTS</b>	titanium smooth <input type="checkbox"/>	+\$0
<b>XTT</b>	titanium textured <input type="checkbox"/>	+\$0

## Step 12. Moisture Barrier Option

<b>MBN</b>	no moisture barrier <input type="checkbox"/>	+\$0
<b>MBB</b>	moisture barrier back only <input type="checkbox"/>	+\$225
<b>MBS</b>	moisture barrier seat only <input type="checkbox"/>	+\$225
<b>MBX</b>	moisture barrier seat and back <input type="checkbox"/>	+\$450

## Step 13. MicrobeCare Selection

<b>MCN</b>	no MicrobeCare protection <input type="checkbox"/>	+\$0
<b>MCY</b>	MicrobeCare protection <input type="checkbox"/>	+\$100

## Step 14.

### Fabric

#### For not fire retardant (non CTB-133) (NR) with one fabric (1F)

Price Category (Nemschoff) Series 3 <input type="checkbox"/>	+\$0
Price Category (Nemschoff) Series 4 <input type="checkbox"/>	+\$464
Price Category (Nemschoff) Series 5 <input type="checkbox"/>	+\$951
Price Category (Nemschoff) Series 6 <input type="checkbox"/>	+\$1526
Price Category (Nemschoff) Series 7 <input type="checkbox"/>	+\$2108
Price Category (Nemschoff) Series 8 <input type="checkbox"/>	+\$2838

### Seat Fabric

#### For not fire retardant (non CTB-133) (NR) with multiple fabrics (MF)

Price Category (Nemschoff) Series 3 <input type="checkbox"/>	+\$0
Price Category (Nemschoff) Series 4 <input type="checkbox"/>	+\$207
Price Category (Nemschoff) Series 5 <input type="checkbox"/>	+\$408
Price Category (Nemschoff) Series 6 <input type="checkbox"/>	+\$644
Price Category (Nemschoff) Series 7 <input type="checkbox"/>	+\$882
Price Category (Nemschoff) Series 8 <input type="checkbox"/>	+\$1184

## Step 15. Back Fabric

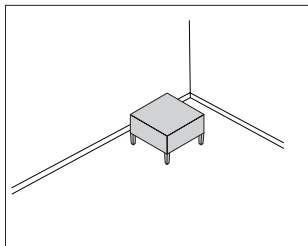
#### For not fire retardant (non CTB-133) (NR) with multiple fabrics (MF)

Price Category (Nemschoff) Series 3 <input type="checkbox"/>	+\$0
Price Category (Nemschoff) Series 4 <input type="checkbox"/>	+\$230
Price Category (Nemschoff) Series 5 <input type="checkbox"/>	+\$448
Price Category (Nemschoff) Series 6 <input type="checkbox"/>	+\$708
Price Category (Nemschoff) Series 7 <input type="checkbox"/>	+\$971
Price Category (Nemschoff) Series 8 <input type="checkbox"/>	+\$1303

## Step 16. Arm Fabric

#### For not fire retardant (non CTB-133) (NR) with multiple fabrics (MF)

Price Category (Nemschoff) Series 3 <input type="checkbox"/>	+\$0
Price Category (Nemschoff) Series 4 <input type="checkbox"/>	+\$182
Price Category (Nemschoff) Series 5 <input type="checkbox"/>	+\$355
Price Category (Nemschoff) Series 6 <input type="checkbox"/>	+\$560
Price Category (Nemschoff) Series 7 <input type="checkbox"/>	+\$768
Price Category (Nemschoff) Series 8 <input type="checkbox"/>	+\$1029



### Product Information

#### Description

#### Features:

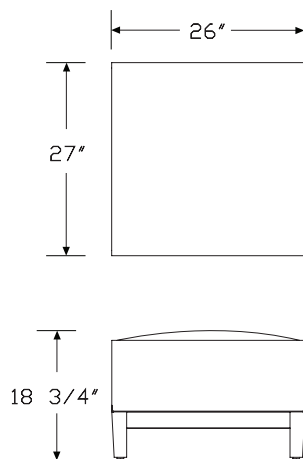
- Solid maple frame
- Mortise and tenon joinery
- Spring seat construction
- Clean-out design
- Replaceable components
- Upholstered arms
- Non-marring  $\frac{7}{8}$ " rubber-cushioned glides
- Nemschoff® healthcare wood finish
- Indoor Advantage™ Gold Certified

#### Notes

Weight—38 lbs

COM—2 yds

#### Dimensions



### Specification Information

#### Step 1.

**860** ☐

#### Step 2. Size

**-B1** 26.5" wide ☐ +\$2402

#### Step 3. Covers

**S** standard covers ☐ +\$0

**P** removable covers ☐ +\$289

#### Step 4. Base Material

**S** metal base ☐ +\$342

**W** wood base ☐ +\$0

#### Step 5. Fire Retardancy

**NR** not fire retardant (non CTB-133) ☐ +\$0

#### Step 6. Fabric Configuration

**1F** one fabric ☐ +\$0

#### Step 7. Wood Finish

##### For wood base (W)

**0Z** medium cherry ☐ +\$0

**2U** light brown walnut ☐ +\$0

**40** dark brown walnut ☐ +\$0

**5K** honey maple ☐ +\$0

**ED** aged cherry ☐ +\$0

**IZ** aged teak ☐ +\$0

**UL** natural maple ☐ +\$0

#### Step 8. Powdercoat Finish

##### For metal base (S)

**BK** black ☐ +\$0

**G1** graphite textured ☐ +\$0

**MSS** metallic silver smooth ☐ +\$0

**MST** metallic silver textured ☐ +\$0

**XTS** titanium smooth ☐ +\$0

**XTT** titanium textured ☐ +\$0

#### Step 9. Moisture Barrier Option

**MBN** no moisture barrier ☐ +\$0

**MBS** moisture barrier seat only ☐ +\$75

#### Step 10. MicrobeCare Selection

**MCN** no MicrobeCare protection ☐ +\$0

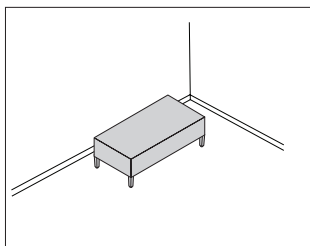
**MCY** MicrobeCare protection ☐ +\$75

Brava Platform Bench, 26.5" Wide

continued

Nemschoff® Brava Platform

Step 11. Fabric		
Price Category (Nemschoff) Series 3	<input type="text" value="A"/>	+\$0
Price Category (Nemschoff) Series 4	<input type="text" value="A"/>	+\$116
Price Category (Nemschoff) Series 5	<input type="text" value="A"/>	+\$238
Price Category (Nemschoff) Series 6	<input type="text" value="A"/>	+\$384
Price Category (Nemschoff) Series 7	<input type="text" value="A"/>	+\$527
Price Category (Nemschoff) Series 8	<input type="text" value="A"/>	+\$710



### Product Information

#### Description

##### Features:

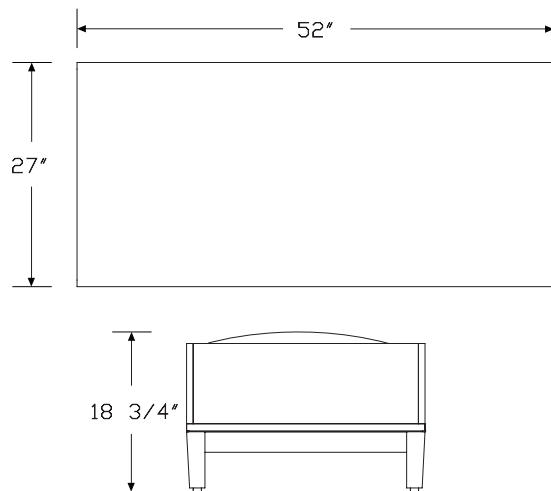
- Solid maple frame
- Mortise and tenon joinery
- Spring seat construction
- Clean-out design
- Replaceable components
- Upholstered arms
- Non-marring  $\frac{7}{8}$ " rubber-cushioned glides
- Nemschoff® healthcare wood finish
- Indoor Advantage™ Gold Certified

#### Notes

Weight—60 lbs

COM—3 $\frac{3}{4}$  yds

#### Dimensions



### Specification Information

#### Step 1.

**860** ☐

#### Step 2. Size

**-B2** 52.5" wide ☐ +\$3056

#### Step 3. Covers

**S** standard covers ☐ +\$0

**P** removable covers ☐ +\$366

#### Step 4. Base Material

**S** metal base ☐ +\$569

**W** wood base ☐ +\$0

#### Step 5. Fire Retardancy

**NR** not fire retardant (non CTB-133) ☐ +\$0

#### Step 6. Fabric Configuration

**1F** one fabric ☐ +\$0

#### Step 7. Wood Finish

##### For wood base (W)

**0Z** medium cherry ☐ +\$0

**2U** light brown walnut ☐ +\$0

**40** dark brown walnut ☐ +\$0

**5K** honey maple ☐ +\$0

**ED** aged cherry ☐ +\$0

**IZ** aged teak ☐ +\$0

**UL** natural maple ☐ +\$0

#### Step 8. Powdercoat Finish

##### For metal base (S)

**BK** black ☐ +\$0

**G1** graphite textured ☐ +\$0

**MSS** metallic silver smooth ☐ +\$0

**MST** metallic silver textured ☐ +\$0

**XTS** titanium smooth ☐ +\$0

**XTT** titanium textured ☐ +\$0

#### Step 9. Moisture Barrier Option

**MBN** no moisture barrier ☐ +\$0

**MBS** moisture barrier seat only ☐ +\$150

#### Step 10. MicrobeCare Selection

**MCN** no MicrobeCare protection ☐ +\$0

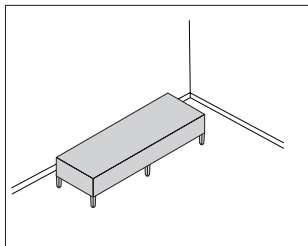
**MCY** MicrobeCare protection ☐ +\$75

Brava Platform Bench, 52.5" Wide

continued

Nemschoff® Brava Platform

Step 11. Fabric		
Price Category (Nemschoff) Series 3	<input type="text" value="A"/>	+\$0
Price Category (Nemschoff) Series 4	<input type="text" value="A"/>	+\$218
Price Category (Nemschoff) Series 5	<input type="text" value="A"/>	+\$447
Price Category (Nemschoff) Series 6	<input type="text" value="A"/>	+\$716
Price Category (Nemschoff) Series 7	<input type="text" value="A"/>	+\$988
Price Category (Nemschoff) Series 8	<input type="text" value="A"/>	+\$1330



### Product Information

#### Description

##### Features:

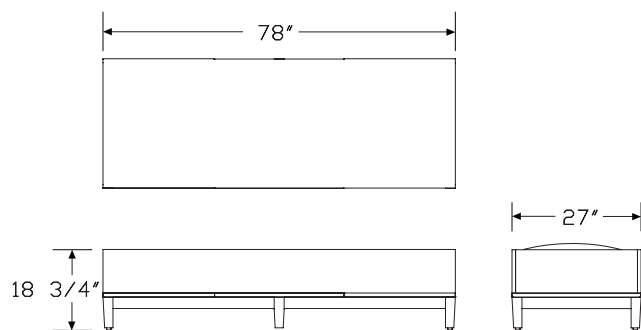
- Solid maple frame
- Mortise and tenon joinery
- Spring seat construction
- Clean-out design
- Replaceable components
- Upholstered arms
- Non-marring  $\frac{7}{8}$ " rubber-cushioned glides
- Nemschoff® healthcare wood finish
- Indoor Advantage™ Gold Certified

#### Notes

Weight—87 lbs

COM—5½ yds

#### Dimensions



### Specification Information

#### Step 1.

**860** ☐

#### Step 2. Size

**-B3** 78.5" wide ☐ +\$3844

#### Step 3. Covers

**S** standard covers ☐ +\$0

**P** removable covers ☐ +\$458

#### Step 4. Base Material

**S** metal base ☐ +\$813

**W** wood base ☐ +\$0

#### Step 5. Fire Retardancy

**NR** not fire retardant (non CTB-133) ☐ +\$0

#### Step 6. Fabric Configuration

**1F** one fabric ☐ +\$0

#### Step 7. Wood Finish

##### For wood base (W)

**0Z** medium cherry ☐ +\$0

**2U** light brown walnut ☐ +\$0

**40** dark brown walnut ☐ +\$0

**5K** honey maple ☐ +\$0

**ED** aged cherry ☐ +\$0

**IZ** aged teak ☐ +\$0

**UL** natural maple ☐ +\$0

#### Step 8. Powdercoat Finish

##### For metal base (S)

**BK** black ☐ +\$0

**G1** graphite textured ☐ +\$0

**MSS** metallic silver smooth ☐ +\$0

**MST** metallic silver textured ☐ +\$0

**XTS** titanium smooth ☐ +\$0

**XTT** titanium textured ☐ +\$0

#### Step 9. Moisture Barrier Option

**MBN** no moisture barrier ☐ +\$0

**MBS** moisture barrier seat only ☐ +\$225

#### Step 10. MicrobeCare Selection

**MCN** no MicrobeCare protection ☐ +\$0

**MCY** MicrobeCare protection ☐ +\$75

Brava Platform Bench, 78.5" Wide

continued

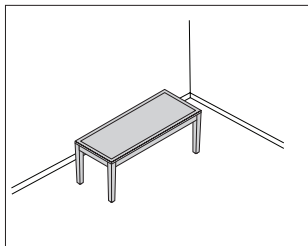
Nemschoff® Brava Platform

Step 11. Fabric		
Price Category (Nemschoff) Series 3	<input type="text" value="A"/>	+\$0
Price Category (Nemschoff) Series 4	<input type="text" value="A"/>	+\$319
Price Category (Nemschoff) Series 5	<input type="text" value="A"/>	+\$654
Price Category (Nemschoff) Series 6	<input type="text" value="A"/>	+\$1050
Price Category (Nemschoff) Series 7	<input type="text" value="A"/>	+\$1449
Price Category (Nemschoff) Series 8	<input type="text" value="A"/>	+\$1951



# Brava Rectangular Coffee Table, 44" Wide

861-T



## Product Information

### Description

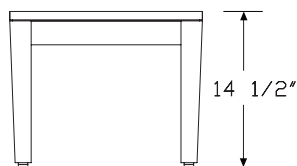
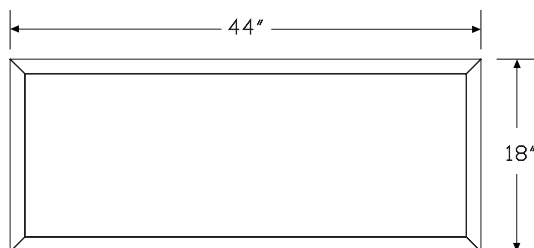
#### Features:

- Solid maple frame
- Laminate or veneer top with wood edge
- 7/8" rubber-cushioned glides
- Nemschoff® healthcare wood finish
- Indoor Advantage™ Gold Certified

### Notes

Weight—27 lbs

### Dimensions



## Specification Information

### Step 1.

861 ☐

### Step 2. Size

-T9 14.5" high and 44" wide ☐ +\$2241

### Step 3. Top Material

LW laminate top with wood edge ☐ +\$0  
WW veneer top with wood edge ☐ +\$436

### Step 4. Laminate Top Finish

#### For laminate top with wood edge (LW)

0W dark brown walnut ☐ +\$0  
2K aged teak ☐ +\$0  
76 light brown walnut ☐ +\$0  
8Q folkstone grey (CP) ☐ +\$0  
91 white (CP) ☐ +\$0  
98 studio white (CP) ☐ +\$0  
BKN black ☐ +\$0  
LU soft white ☐ +\$0  
WL warm stone (CP) ☐ +\$0  
WY medium cherry ☐ +\$0

### Step 5. Wood Top, Edge and Base Finish

#### For veneer top with wood edge (WW)

0Z medium cherry ☐ +\$0  
2U light brown walnut ☐ +\$0  
40 dark brown walnut ☐ +\$0  
5K honey maple ☐ +\$0  
ED aged cherry ☐ +\$0  
IZ aged teak ☐ +\$0  
UL natural maple ☐ +\$0

### Step 6. Wood Edge and Base Finish

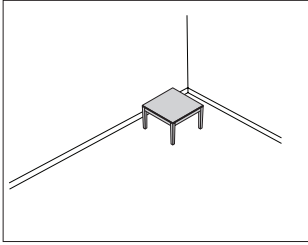
#### For laminate top with wood edge (LW)

0Z medium cherry ☐ +\$0  
2U light brown walnut ☐ +\$0  
40 dark brown walnut ☐ +\$0  
5K honey maple ☐ +\$0  
ED aged cherry ☐ +\$0  
IZ aged teak ☐ +\$0  
UL natural maple ☐ +\$0

### Step 7. MicrobeCare Selection

MCN no MicrobeCare protection ☐ +\$0  
MCY MicrobeCare protection ☐ +\$50

# Brava Square End Table, 27.25" Wide 861-T



## Product Information

### Description

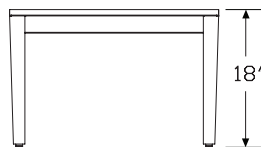
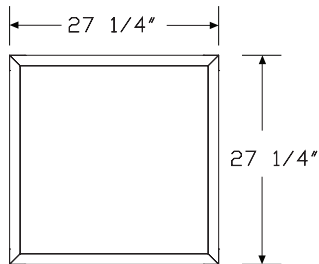
#### Features:

- Solid maple frame
- Laminate or veneer top with wood edge
- 7/8" rubber-cushioned glides
- Nemschoff® healthcare wood finish
- Indoor Advantage™ Gold Certified

### Notes

Weight—25 lbs

### Dimensions



## Specification Information

### Step 1.

**861** ☐

### Step 2. Size

**-T6** 18" high and 27.25" wide ☐ +\$1920

### Step 3. Top Material

**LW** laminate top with wood edge ☐ +\$0

**WW** veneer top with wood edge ☐ +\$374

### Step 4. Laminate Top Finish

#### For laminate top with wood edge (LW)

**0W** dark brown walnut ☐ +\$0

**2K** aged teak ☐ +\$0

**76** light brown walnut ☐ +\$0

**8Q** folkstone grey (CP) ☐ +\$0

**91** white (CP) ☐ +\$0

**98** studio white (CP) ☐ +\$0

**BKN** black ☐ +\$0

**LU** soft white ☐ +\$0

**WL** warm stone (CP) ☐ +\$0

**WY** medium cherry ☐ +\$0

### Step 5. Wood Top, Edge and Base Finish

#### For veneer top with wood edge (WW)

**0Z** medium cherry ☐ +\$0

**2U** light brown walnut ☐ +\$0

**40** dark brown walnut ☐ +\$0

**5K** honey maple ☐ +\$0

**ED** aged cherry ☐ +\$0

**IZ** aged teak ☐ +\$0

**UL** natural maple ☐ +\$0

### Step 6. Wood Edge and Base Finish

#### For laminate top with wood edge (LW)

**0Z** medium cherry ☐ +\$0

**2U** light brown walnut ☐ +\$0

**40** dark brown walnut ☐ +\$0

**5K** honey maple ☐ +\$0

**ED** aged cherry ☐ +\$0

**IZ** aged teak ☐ +\$0

**UL** natural maple ☐ +\$0

### Step 7. MicrobeCare Selection

**MCN** no MicrobeCare protection ☐ +\$0

**MCY** MicrobeCare protection ☐ +\$50





## Index by Product Name

<b>Nemschoff® Brava Collection</b>	
Brava Classic Chair, 28.5" Wide	page(s) 5
Brava Classic Chair, 30.5" Wide	7
Brava Classic Chair, 32.5" Wide	9
Brava Classic Settee, 54.5" Wide	15
Brava Classic Sofa, 80.75" Wide	25
Brava Classic Three Seat, 72.75" Wide	19
Brava Classic Three Seat, 78.75" Wide	21
Brava Classic Three Seat, 80.75" Wide	23
Brava Classic Three Seat, 84.75" Wide	27
Brava Classic Two Seat, 50.5" Wide	11
Brava Classic Two Seat, 54.5" Wide	13
Brava Classic Two Seat, 58.5" Wide	17
Brava Platform Bench, 26.5" Wide	43
Brava Platform Bench, 52.5" Wide	45
Brava Platform Bench, 78.5" Wide	47
Brava Platform Settee, 54.5" Wide	33
Brava Platform Sofa with Continuous Cushion, 80.75" Wide	41
Brava Platform Sofa without Arms, 79" Wide	37
Brava Platform Three Seat, 80.75" Wide	35
Brava Platform Three Seat with Divider Arms, 80.75" Wide	39
Brava Platform Two Seat with Divider Arm, 54.5" Wide	31
Brava Rectangular Coffee Table, 44" Wide	49
Brava Square End Table, 27.25" Wide	50
Multiple Power Outlets/USB Ports (Not intended for patient care vicinity; NFPA 99 Healthcare Facilities Code)	30
Power Outlet/USB Port (Not intended for patient care vicinity; NFPA 99 Healthcare Facilities Code)	29



## Index by Product Number

860-2	Brava Platform Settee, 54.5" Wide	page(s) 33
860-2	Brava Platform Two Seat with Divider Arm, 54.5" Wide	31
860-3	Brava Platform Sofa with Continuous Cushion, 80.75" Wide	41
860-3	Brava Platform Sofa without Arms, 79" Wide	37
860-3	Brava Platform Three Seat, 80.75" Wide	35
860-3	Brava Platform Three Seat with Divider Arms, 80.75" Wide	39
860-B	Brava Platform Bench, 26.5" Wide	43
860-B	Brava Platform Bench, 52.5" Wide	45
860-B	Brava Platform Bench, 78.5" Wide	47
861-1	Brava Classic Chair, 28.5" Wide	5
861-1	Brava Classic Chair, 30.5" Wide	7
861-1	Brava Classic Chair, 32.5" Wide	9
861-2	Brava Classic Settee, 54.5" Wide	15
861-2	Brava Classic Two Seat, 50.5" Wide	11
861-2	Brava Classic Two Seat, 54.5" Wide	13
861-2	Brava Classic Two Seat, 58.5" Wide	17
861-3	Brava Classic Sofa, 80.75" Wide	25
861-3	Brava Classic Three Seat, 72.75" Wide	19
861-3	Brava Classic Three Seat, 78.75" Wide	21
861-3	Brava Classic Three Seat, 80.75" Wide	23
861-3	Brava Classic Three Seat, 84.75" Wide	27
861-T	Brava Rectangular Coffee Table, 44" Wide	49
861-T	Brava Square End Table, 27.25" Wide	50
NP501.	Power Outlet/USB Port (Not intended for patient care vicinity; NFPA 99 Healthcare Facilities Code)	29
NP502.	Multiple Power Outlets/USB Ports (Not intended for patient care vicinity; NFPA 99 Healthcare Facilities Code)	30







## 20-Day or Less/Assigned Lead-Time Order Information

GSA

### 20-Day or Less and Assigned Lead-Time Programs

20-day or less and assigned lead-time products are designed for established Herman Miller dealers with pre-approved credit.

Products are distributed from multiple manufacturing facilities across the United States. All products and options not designated by an Assigned Lead-Time icon  will ship in 20 business days or less after being acknowledged by Herman Miller. Products and options designated by an  are on the assigned lead-time program and will ship in 20 days, less than 20 days, or more than 20 days from order acknowledgement.

### Ordering Procedure

Please place orders through Order Manager. If this is not available to you, place orders through mail or fax. Verbal purchase orders will not be accepted.

Order Entry fax number for Meridian® Filing and Storage:

(616) 846 9236.

Order Entry fax number for all other products:

(616) 654 3085.

For more information, contact your Customer Care representative at:

(866) 854 3048 ext 3400.

### Shipments and Delivery

Per Herman Miller Terms and Conditions.

### Changes and Cancellation

Per Herman Miller Terms and Conditions.



# Nemschoff® Brava Collection Multiple Fabrics Guide

Multiple fabrics can be selected for application on a single product. Choosing multiple fabrics allows for high-performance fabrics to be used in the specific areas where they're most needed. For example, easy-to-clean, abrasion-resistant polyurethane can be used on the seat and headrest, combined with a softer woven fabric for the back where wear is less of an issue.

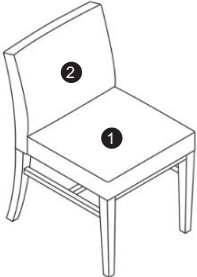
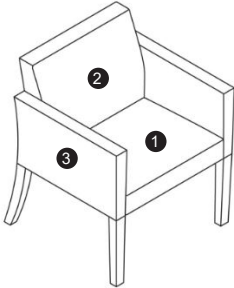
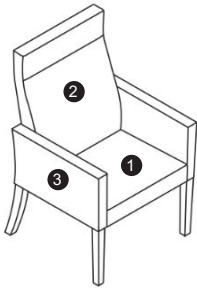
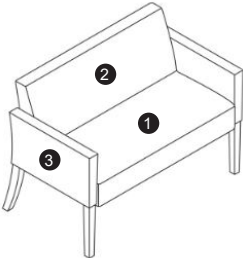
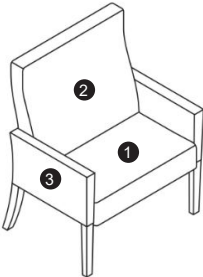
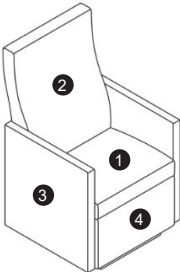
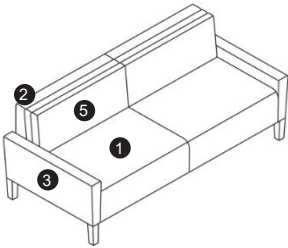
Choosing multiple fabrics also offers aesthetic flexibility. For example, you can create design continuity among multiple pieces by combining colors and patterns to help coordinate them.

All surfaces included in an area must be the same fabric.

Illustrations intended for single seat, multiple seat, and different back height units.

All arms, including intervening, when applicable, must be in the same fabric.

All footrests include the mid-ottoman and footrest flap in the same fabric.

<b>KEY</b> 1. Seat 2. Back / Back Cushion 3. Arms / Side Panel 4. Front Panel 5. Back Cushion	<b>Brava Side Chair</b> 	<b>Brava Chair</b> 	<b>Brava Patient Chair</b> 
<b>Brava Plus Chair</b> 	<b>Brava Plus Patient Chair</b> 	<b>Brava Glider</b> 	<b>Brava Flop Sofa</b> 

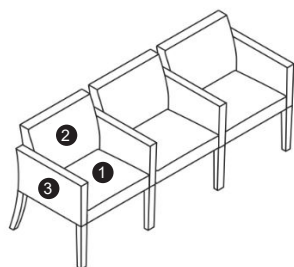
*continued on next page*

# Nemschoff® Brava Collection

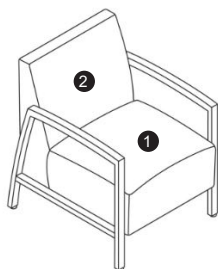
## Multiple Fabrics Guide

*continued*

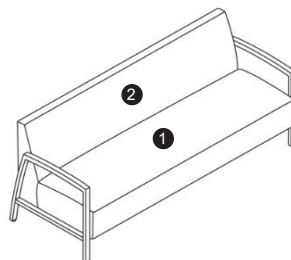
Brava Multiple Seating



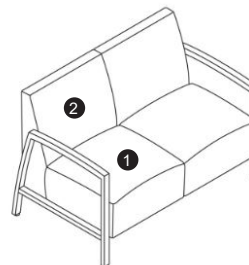
Brava Modern Armchair



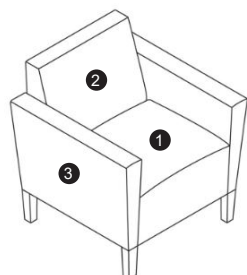
Brava Modern Settee & Sofa



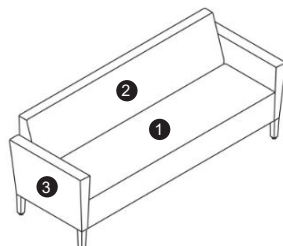
Brava Modern Multiple Seating



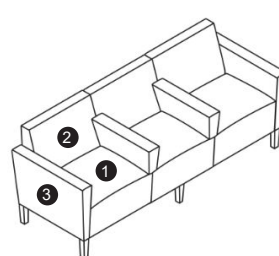
Brava Platform Chair



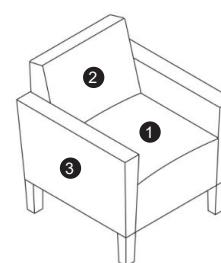
Brava Platform Settee & Sofa



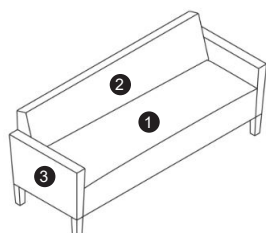
Brava Platform Multiple Seating



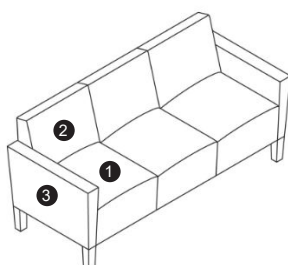
Brava Classic Armchair



Brava Classic Settee & Sofa



Brava Classic Multiple Seating





For more information about our products and services or to see a list of dealers, please visit us at [HermanMiller.com](http://HermanMiller.com) or call (800) 851 1196.

© 2025 Herman Miller, Inc., Zeeland, Michigan


#### Distribution Rights

Working together since 1956, Herman Miller and Vitra are the authentic sources of designs by Charles and Ray Eames, Alexander Girard, and George Nelson. All the designs shown in this book are protected by law. Herman Miller has obtained all rights to make and sell these designs. Also, Herman Miller holds exclusive worldwide manufacturing and distribution rights for these products with the following exceptions:

Charles and Ray Eames, George Nelson, and Alexander Girard—Worldwide distribution rights for furniture in all areas except Europe and the Middle East. For those areas, please contact Vitra.

Isamu Noguchi—Worldwide distribution rights for the Noguchi Rudder Table. Distribution rights for the Noguchi Table in North America and Central America only. For all other areas, please contact Vitra.

Magis—Exclusive distribution rights in the US and Canada. For all other areas, please contact Magis.

® HermanMiller, , Action Office, Aeron, Aside, Canvas Office Landscape, Caper, Cosm, Co/Struc, Eames, Embody, Ethospace, Exclave, Fine-Tune, FlexFront, Formcoat, Ground Cloth, Intent, Layout Studio, Lino, Maharam, Meridian, Mirra, Motia, Nelson, Pellicle, Perspectives, Plex, PostureFit, PostureFit SL, Sayl, Setu, Tu, Verus, Y-Tower and Zeph are among the registered trademarks of Herman Miller, Inc., and its owned subsidiaries.

™ AireWeave, Bubbletack, Canvas Vista, Cellular Suspension, Commend, Compass, Connect, DOT, Durawrap, Everywhere, Flex-Edge, Headway, Hopsak 2, Iota, Keyless Entry, Latitude, Lyris 2, Mora, Multiscrim, Nevi, OE1, OE1 Workspace Collection, Overlay, Renew, Stackable, Swoop, Thrive, TriFlex, Twist and Valor are among the trademarks of Herman Miller, Inc., and its owned subsidiaries.

Chemsurf® is a registered trademark of Wilsonart International.

Corian® is a registered trademark of E.I. du Pont de Nemours and Company Corporation.

FLEXNET™ is a trademark of Milliken & Company.

Floor Saver Glide® is a registered trademark of Carpin Manufacturing, Inc.

Forest Stewardship Council® is a registered trademark of the Forest Stewardship Council A.C. (FSC). We are FSC® certified (FSC® C102895).

FSC® is a registered trademark of the Forest Stewardship Council A.C. (FSC).

MicrobeCare™ is a trademark of Parasol Medical LLC.

Microsoft® and Natural® Keyboard are registered trademarks of Microsoft Corporation.

Place Textiles® is a registered trademark of Place Textiles.