



GSA prices effective October 7, 2024  
(based on July 1, 2024, commercial price list)  
Published March 2025

## Workspaces

### Ambit™ Workspace Solutions

#### General Services Administration Federal Supply Service Authorized Federal Supply Schedule Price List

Online access to contract ordering information, terms and conditions, up-to-date pricing, and the option to create an electronic delivery order is available through GSA Advantage!, a menu-driven database system. The Internet address for GSA Advantage! is [www.gsaadvantage.gov](http://www.gsaadvantage.gov).

Office Furniture  
FSC/PSC 7110/7125  
Contract Number: GS-03F-036DA  
UEI: Q2K3MSZ843D8  
Contract Period: December 21, 2015—December 20, 2025

MillerKnoll, Inc.  
855 East Main Avenue  
Zeeland, Michigan 49464  
(616) 654 3000 Phone  
(616) 654 8278 Fax  
[www.HermanMiller.com/government](http://www.HermanMiller.com/government)

Business Size: Large



# Contract Information

## 1a. Special Item Numbers (SIN)

SIN 33721

Furniture Systems, Computer Furniture, Filing and Storage, Tables and Accessories, Upholstered Seating and Multi-Purpose Seating, Project Management, Reconfiguration and Relocation Services, Design/Layout and Installation Services

SIN 33721P

Packaged Offices

SIN 337127

Modular Laboratory Furniture Systems

SIN 339113H

Healthcare Furniture

SIN OLM

Order-Level Materials (OLMs)

This SIN is only for products and/or services used in direct support of the purchase of new furniture. It requires approval from the ordering Contract Officer. Please contact your local MillerKnoll Inc. representative to discuss the appropriate use of this SIN.

SIN 532289

Leasing

Contact MillerKnoll Inc participating government dealer for current leasing information.

## 1b. Lowest Priced Model

|              |         |          |
|--------------|---------|----------|
| SIN 33721:   | BVP3.S  | \$7.27   |
| SIN 33127:   | TW113   | \$5.81   |
| SIN 339113H: | CR900NR | \$483.80 |

## 1c. Service Rates

Project Management

Furniture Project Manager: \$64.75 per hour  
Furniture Project Coordinator: \$49.00 per hour  
Build-Out Project Manager: \$80.00 per hour

Reconfiguration and Relocation Services

Not to exceed \$55 per hour.

See \* Additional Notes for Installation & Reconfiguration and Relocation Services.

Design/Layout

Not to exceed \$65 per hour.

Installation Services

Not to exceed \$55 per hour (\$82.50 per hour for after-hours Installation).

See \* Additional Notes for Installation & Reconfiguration and Relocation Services.

## 2. Maximum Order

SIN 33721, 337127, NEW, OLM

\$250,000 net product value

SIN 33721P

\$250,000 net value

SIN 339113H

\$500,000 net product value

## 3. Minimum Order

\$100 net

## 4. Geographic Coverage

Continental U.S.

Orders for Alaska, Hawaii, and Puerto Rico will be shipped F.O.B. inland carrier point of exportation.

## 5. Point of Production

Zeeland, Ottawa County, Michigan

Spring Lake, Ottawa County, Michigan

Elland, Yorkshire, United Kingdom

Hildebran, Burke County, North Carolina, USA

## 6. Pricing

Prices shown are list. Discounts include Industrial Funding Fee.

SIN 33721

Standard Lead Time, Single Order Net Purchase \$100 - 250,000, includes approved Herman Miller Options Products.

| Product Line                           | Discount From List |
|--|--------------------|
| Action Office 1                        | 73.8%              |
| Action Office 2                        | 73.8%              |
| Aeron                                  | 64.5%              |
| Ambit Workspace Solutions              | 74.3%              |
| Asari Chair                            | 53.7%              |
| Aside                                  | 64.2%              |
| Bay Work Pod                           | 56.7%              |
| C-Style Overhead Storage               | 73.8%              |
| Canvas Office Landscape Channel        | 74.8%              |
| Canvas Office Landscape Dock           | 74.8%              |
| Canvas Metal Desk                      | 74.8%              |
| Canvas Office Landscape Metal Storage  | 74.8%              |
| Canvas Office Landscape Private Office | 74.8%              |
| Canvas Office Landscape Wood Storage   | 74.8%              |
| Canvas Office Landscape Vista          | 74.8%              |
| Canvas Office Landscape Wall           | 74.8%              |
| Caper                                  | 61.5%              |
| Commend Nurses Station                 | 73.3%              |
| Cosm                                   | 61.7%              |
| Eames® Aluminum Group                  | 58.7%              |
| Eames Conference & Dining Tables       | 73.6%              |
| Easton Family                          | 54.91%             |
| Embody                                 | 59.7%              |
| Energy Distribution Systems            | 73.8%              |
| Ethospace System                       | 73.8%              |
| Everywhere™ Tables                     | 73.8%              |
| Exclave                                | 61.7%              |

Contract Information

continued

|   |        |
|---|--------|
| Fuld                                    | 59.7%  |
| Headway™ Tables                         | 73.8%  |
| Intent Solution                         | 58.7%  |
| Layout Studio®                          | 60.7%  |
| Lighting                                | 73.8%  |
| Lino                                    | 63.7%  |
| Meridian Laterals                       | 67.3%  |
| Meridian Pedestals                      | 64.2%  |
| Meridian Towers                         | 62.7%  |
| Meridian Storage                        | 62.7%  |
| Mirra 2                                 | 61.7%  |
| Motia Tables                            | 73.8%  |
| NaughtOne                               | 50.0%  |
| Nemschoff                               | 54.91% |
| Nevi™ Tables                            | 73.8%  |
| Nevi Link                               | 73.8%  |
| OE1 Boundary                            | 72.8%  |
| OE1 Community Elements                  | 61.7%  |
| OE1 Micro Packs                         | 73.8%  |
| OE1 Storage                             | 72.8%  |
| OE1 Tables and Benching                 | 73.8%  |
| Overlay™                                | 62.7%  |
| Plex® Lounge Furniture                  | 59.5%  |
| Pronta Stacking Chair                   | 57.7%  |
| Public Office Landscape                 | 61.7%  |
| Renew™ Tables                           | 73.8%  |
| Renew Link                              | 73.8%  |
| Sayl                                    | 62.2%  |
| Setu                                    | 59.7%  |
| Swoop Lounge Furniture                  | 60.7%  |
| Thrive Portfolio                        | 62.0%  |
| Thrive Portfolio-CBS Products Extension | 62.0%  |
| Tu Lateral Files                        | 74.3%  |
| Tu Pedestals                            | 73.8%  |
| Tu Storage                              | 74.3%  |
| Tu Towers                               | 74.3%  |
| Tu Wood Cases                           | 74.3%  |
| Tu Wood Cubbies                         | 74.3%  |
| Tu Wood Credenzas                       | 74.3%  |
| Tu Wood Pedestals                       | 74.3%  |
| Tu Wood Towers                          | 74.3%  |
| Valor™ Family                           | 54.91% |
| Verus                                   | 63.7%  |
| Zeph                                    | 60.2%  |

Services

Please refer to section 19 for Terms and Conditions of Installation/ Reconfiguration and Relocation Services.

Project Management

Services under this SIN may be used only in conjunction with the purchase of new furniture. Please contact your local MillerKnoll Inc. representative to discuss the available labor categories (listed below). The hourly rates listed are “Not To Exceed” or “NTE” values.

Furniture Project Manager: \$64.75 per hour  
Furniture Project Coordinator: \$49.00 per hour  
Build-Out Project Manager: \$80.00 per hour

Reconfiguration and Relocation Services

Reconfiguration and Relocation Services will be provided by MillerKnoll Inc. or its participating dealer based on a fee not to exceed \$55 per hour.

See \* Additional Notes for Installation & Reconfiguration and Relocation Services.

Design/Layout

Design service will be provided by MillerKnoll Inc. or its participating dealer based on a fee not to exceed \$65 per hour.

Installation Services

Installation Services will be provided by MillerKnoll Inc. or its participating dealer based on a fee not to exceed \$55 per hour (\$82.50 per hour for after-hours Installation).

See \* Additional Notes for Installation & Reconfiguration and Relocation Services.

SIN 337127

Standard Lead Time, Single Order Net Purchase \$100 - 250,000, includes approved Herman Miller Options Products.

| Product Line     | Discount From List |
|------------------|--------------------|
| Action Lab       | 58.5%              |
| Compass System   | 58.5%              |
| Co/Struc System  | 58.5%              |
| Healthcare Carts | 18.0%              |
| Mora System      | 58.5%              |
| Bedside Cabinets | 58.5%              |

SIN 33721P

Packaged Office Furniture - Maximum Order \$250,000 (net).

Includes packaged furniture solutions for customers needing to furnish an office.

SIN 339113H

Standard Lead Time, Single Order Net Purchase \$100 - 500,000, includes approved Herman Miller Options Products.

| Product Line                   | Discount From List |
|--------------------------------|--------------------|
| Nemschoff Healthcare Furniture | 54.91%             |

7. Quantity Discounts

Reference item #6.

8. Payment Terms

Net 30 days

9. Foreign Items

None

10. Time of Delivery

- a. 90 day ARO
- b. Expedited delivery: Items listed in the 10-Day section of the catalogs are available for expedited delivery.
- c. Overnight/2-day delivery: Select items may be available for overnight or 2-day delivery. Contact MillerKnoll Inc. or a participating dealer for availability and rates.
- d. Urgent requirements: Agencies may contact contractor or participating dealer to request faster delivery.

# Contract Information

*continued*

## 11. F.O.B.

F.O.B. destination except Alaska, Hawaii, and Puerto Rico, which will be shipped F.O.B. inland carrier point of exportation.

## 12. Ordering Address

a. MillerKnoll Inc.

Government Customer Care 0161  
855 East Main Avenue  
Zeeland MI 49464.

b. For supplies and services, the ordering procedures information on Blanket Purchase Agreements (BPA's) are found in Federal Acquisition Regulation (FAR) 8.405-3.

## 13. Payment Address.

MillerKnoll Inc.  
22764 Network Place  
Chicago, IL 60673-1227

## 14. Warranty

MillerKnoll Inc. commercial warranty applies.

## 15. Export Packing Charge

Prices supplied on request.

## 16. Rental Maintenance and Repair Terms

Not applicable

## 17. Terms and Conditions of Installation/Reconfiguration and Relocation Services

\* Additional Notes for Installation & Reconfiguration and Relocation Services:

FOB Destination (Drop Ship): Price includes product delivery to the site, brought to the tailgate of the truck. The purchaser is responsible for unloading.

Prices effective up to the maximum order by SIN only. Above the MO, pricing shall be negotiated on a case-by-case basis between the client and local dealer.

Standard Services are Subject to the Following Conditions:

Installation will be performed during normal weekday working hours.

Adequate facilities for delivery, unloading, moving and staging/storing the product during the installation process shall be provided.

Service work will not be hindered by other trades.

Electric, heat, and adequate elevator service will be furnished without charge.

The immediate installation area shall be complete and free of debris including the carpet/flooring before installation commences.

Any work requiring a licensed electrician is the responsibility of the buyer.

Additional Charges May Apply For:

Major Metro Markets and any non-ground floor installation.

Major Metro Markets include large population centers and urban environments.

Installation in a clinical/medical environment.

Special restrictions or limits established by local laws, ordinances or the directions of the buyer, including but not limited to restrictions on transportations of materials, street access to the job site and/or dock facilities.

Installations outside of a 50 mile radius of the servicing dealer.

Local Prevailing Wage and/or Union Labor Rates.

Any additional charges shall be quoted by the dealer and approved by the buyer prior to performance of the work.

## 18. Terms and Conditions of Repair Parts

Not applicable

## 19. Service and Distribution Points

For service and distribution points nearest you, call (800) 851 1196.

## 20. Participating Dealers

Access Herman Miller web site for current list of participating dealers: [www.HermanMiller.com/where-to-buy/contact-a-dealer/](http://www.HermanMiller.com/where-to-buy/contact-a-dealer/). Select your market by using the filter.

## 21. Preventive Maintenance

Not applicable

## 22a. Special Attributes.

2022

MillerKnoll earns its 15th consecutive perfect score in Human Rights Campaign Foundation's 2022 Corporate Equality Index.

2021

The OE1 Trolley and Micro Packs are both winners of the 2021 Archiproducts international design competition in the Office Category.

MillerKnoll is named to Michigan's Best and Brightest in Wellness List for 2021.

MillerKnoll is awarded Platinum Rating in CSR by EcoVadis.

OE1 is named winner of Wallpaper's "Most Futuristic Furniture" Category as part of their first-ever Smart Space Awards.

OE1 receives the Workplace category award from Fast Company's 2021 Innovation by Design Awards.

MillerKnoll is named to Fast Company's Annual List of the World's Most Innovative Companies for 2021.

MillerKnoll is recognized as a "Disclosure Leader" by the Chemical Footprint Project (CFP).

# Contract Information

*continued*

MillerKnoll earns its 14th consecutive perfect score in Human Rights Campaign Foundation's 2021 Corporate Equality Index.

MillerKnoll is named to Newsweek's List of America's Most Responsible Companies 2021.

Great Lakes Women's Business Council awards MillerKnoll for "Excellence in Supplier Diversity" in the Best In Class category.

2020

Herman Miller is recognized with a 2020 FSC® Leadership Award for our commitment to responsible forestry management.

Herman Miller is named one of Investor's Business Daily Top 50 Best ESG (Environmental, Social, and Corporate Governance) Companies.

Working Mother names Herman Miller as one of the Best Companies for Dads.

Herman Miller is awarded Platinum Rating in CSR by EcoVadis.

Herman Miller is named Diversity Inc 2020 Noteworthy Company for recruitment efforts, employee development opportunities, leadership accountability, and supplier diversity.

Cosm, by Studio 7.5, receives an iF Gold Award in the Office and Industry category at the iF World Design Awards 2020.

Herman Miller earns its 13th consecutive perfect score in Human Rights Campaign Foundation's 2020 Corporate Equality Index.

2019

Mora System casework, designed by Collective Ten for Herman Miller, receives silver in the Industrial and Life Science Design/Medical Furniture category at the European Product Design Awards.

Mora System casework is awarded GOOD DESIGN Award 2019, selected for design excellence and innovation.

National Minority Supplier Diversity Council (NMSDC) names Herman Miller as the 2019 Class 1 Corporation of the Year for leadership in supplier diversity.

TIME Magazine names Cosm to its list of 100 Best Inventions of 2019.

Herman Miller is named #12 Overall and #2 in Manufacturing on Investor's Business Daily Best ESG (Environmental, Social, Governance) Companies.

Herman Miller is recognized as a silver level Certified Veteran-Friendly Employer by the Michigan Veterans Affairs Agency for a commitment to veteran hiring, retention, and development.

For the second year in a row, Herman Miller receives a Gold Medal from EcoVadis in recognition of Corporate Social Responsibility achievement measured in categories of environment, labor and human rights, ethics, and sustainable procurement.

Herman Miller is named "Frontrunner" in Chemical Footprint Project by Clean Production Action for our chemical management policies and practices.

Herman Miller receives International Interior Design Association and Contract's best showroom design award in the "Large Showroom" category at NeoCon.

Herman Miller earns its 12th consecutive perfect score in Human Rights Campaign Foundation's 2019 Corporate Equality Index.

Cosm, designed by Studio 7.5 for Herman Miller, receives a Red Dot Best of the Best Product Design Award in the "Office Chairs" category.

Lino, designed by Sam Hecht and Kim Colin for Herman Miller, receives an iF Design Award in the Product Design category.

2018

Overlay, designed by Birsell+Seck, receives Interior Design Best of Year Award in the Partitions and Wall Systems category.

Herman Miller receives the "Corporation of the Year" in consumer products award from the Michigan Minority Supplier Development Council.

Herman Miller achieves the Advanced Excellence in Supplier Diversity Award from the Great Lakes Women's Business Council for doing business with women-owned suppliers.

Great Lakes Women's Business Council awards Herman Miller for "Excellence in Supplier Diversity" in the Advanced category.

WEConnect awards Herman Miller an Honorable Mention for global supplier diversity initiatives.

As one of the top-scoring companies in the industry for the 14th consecutive year, Herman Miller has qualified for inclusion in RobecoSAM's 2018 Sustainability Yearbook and receives the Silver Class distinction for excellent sustainability performance—economic, environmental, and social.

For the 11th consecutive year, Herman Miller receives a perfect score on the Human Rights Campaign Foundation's Corporate Equality Index and is designated as Best Place to Work for LGBT equality. This report evaluates U.S. companies in terms of diversity, particularly LGBT-related policies and practices.

# Contract Information

*continued*

Herman Miller receives Gold Medal from EcoVadis in recognition of Corporate Social Sustainability achievement measured in categories of environment, labor and human rights, ethics, and sustainable procurement. EcoVadis operates the first web-based collaborative platform that allows companies to assess the environmental and social performance of their global suppliers.

Aeron receives Good Design Award from The Chicago Athenaeum Museum of Architecture and Design.

The Cosm Chair wins Mix Interiors "Product of the Year—Task" award.

2017

Herman Miller receives "Rising Star Award" from the Michigan Veterans Affairs Agency (MVAA) for exhibiting new and novel approaches to veteran recruitment and hiring.

Herman Miller is named the 2017 "Corporation of the Year" in the consumer products sector by the Michigan Minority Supplier Development Council (MMSDC).

Herman Miller receives a 2017 SEAL (Sustainability, Environmental Achievement and Leadership) Business Sustainability Award. SEAL Award winners are determined by a holistic methodology measuring applicants against established benchmarks that demonstrate impact and progress toward creating a healthy planet and a sustainable future.

Herman Miller earns the 4 Star Diversity Visionary Award. This award celebrates the diversity, equality, and inclusion work of Herman Miller. The award is presented at the annual Diversity Equity Inclusion Summit, held by the Grand Rapids Area Chamber of Commerce.

Herman Miller is named one of the Best and Brightest in Wellness for the 5th year in a row.

Herman Miller earns its 10th consecutive perfect score in Human Rights Campaign Foundation's 2017 Corporate Equality Index.

As one of the top-scoring companies in the industry for the 13th consecutive year, Herman Miller has qualified for inclusion in RobecoSAM's 2017 Sustainability Yearbook and receives the Bronze Class distinction for excellent economic, environmental, and social sustainability performance. The selection criteria for inclusion in the Yearbook becomes more rigorous each year, and only the top 15 percent of companies within each industry are selected.

Herman Miller once again earns the WorldatWork Seal of Distinction, a unique standard of excellence in work-life effectiveness that shows we provide a distinct, mutually beneficial workplace experience. Herman Miller is the only furniture manufacturer among the 160 companies across the U.S. and Canada honored with the award.

Herman Miller's Mora wins Nightingale Silver Award in the "Furniture Collections" category at the 2017 Healthcare Design Conference.

2016

Herman Miller earns 9th consecutive perfect score in Human Rights Campaign Foundation's Corporate Equality Index and is designated as Best Place to Work for LGBT equality.

Herman Miller is recognized as the Business of the Year at the Annual Meeting of the West Michigan Environmental Action Council (WMEAC) for being an outstanding partner in support of the growth of WMEAC's programs. WMEAC's award goes to the business with the greatest depth and breadth of support, unwavering dedication to environmental action in West Michigan, and a strong corporate commitment to environmental advocacy.

The 101 Best and Brightest Sustainable Companies once again (5th consecutive year) recognizes Herman Miller as an organization in Michigan (and for the first time, in the nation) that exhibits leadership and innovation in its approach to sustainability. This award celebrates those companies that are making their businesses more sustainable, the lives of their employees better, and the community, both locally and globally, more responsible as a whole.

Herman Miller is recognized by the Michigan Minority Supplier Development Council (MMSDC) as a "Corporation of the Year". Additionally, we are the only West Michigan company this year to receive an "Ambassadors Championing Excellence" Award from the MMSDC.

Herman Miller is recognized with "2016 Excellence in Supplier Diversity Award" from the Great Lakes Women's Business Council.

Herman Miller is recognized as a 2016 Healthiest 100 Workplace in America, ranking 49th in the country for our commitment to health and exceptional corporate wellness programming.

Herman Miller receives the Best and Brightest in Wellness Award for the 4th year in a row. This program is an innovative initiative that recognizes and celebrates quality and excellence in health awareness.

The Michigan Occupational Safety and Health Administration renews Herman Miller's "Star" status, the highest workplace safety and health designation, for the Hickory facility in Spring Lake.

Plex Lounge Furniture from Herman Miller receives #MetropolisLikes award at NeoCon 2016.

Plex Lounge Furniture from Herman Miller receives Interior Design HiP Award for Workplace Seating/Lounge at NeoCon 2016.

Herman Miller is named a 2016 Women on Boards Winning Company. Companies selected for this recognition are considered champions of board diversity as 20 percent or more of their board seats are occupied by women.

Herman Miller is selected for inclusion in the 2016 RobecoSAM Sustainability Yearbook for the 12th consecutive year.

Herman Miller again earns the WorldatWork Work-Life 2016 Seal of Distinction. This award identifies organizations that focus on programs that promote work-life balance and overall well-being.

# Contract Information

*continued*

## **22b. Section 508 Compliance**

Not applicable

## **23. Unique Entity ID:** Q2K3MSZ843D8

## **24. Registered in System for Award Management ([www.SAM.gov](http://www.SAM.gov)) Database**

## **25. Cancellation**

Prior to production, no cancellation charge will apply. After production, only actual cost incurred that the contractor can demonstrate if items are sold after 3 months.

## **26. Restocking Charges**

Agencies must notify the contractor for authorization prior to returning any items. The customer agency will be required to pay all packaging and return freight charges. A restocking fee of 50% for Systems Furniture and 35% for all other product lines will be charged for any returned items.

Returns and restocking policy is not applicable to Options products, products under SIN 337127, 339113H, NaughtOne and Nemschoff products.

## **MillerKnoll Inc. Miscellaneous Information:**

Federal ID Number: 38-0837640

Commercial and Government Entity Code (CAGE): 40636

Data Universal Numbering System (DUNS) 00-601-2801

Commercial Entity Code (CEC): 00702290J



|  |               |
|--|---------------|
| <b>Introduction</b>  | <b>page 2</b> |
| <b>Ambit™ Workspace Solutions</b>  | <b>3</b>      |
| Storage  | 5             |
| Accessories  | 11            |
| Shroud   | 16            |
| Work Tools   | 22            |
| <b>Indices</b>   | <b>41</b>     |
| By Name  | 41            |
| By Number  | 43            |
| <b>Appendices</b>  |               |
| 20-Day or Less/Assigned Lead-Time Order Information  |               |
| Customer's Own Material Order Information-Workspaces   |               |
| Textiles Application Chart-Workspaces  |               |
| Textile Colors   |               |
| <b>For the latest materials information, refer to the Materials pages on <a href="http://HermanMiller.com">HermanMiller.com</a>.</b> |               |

**A Note on the Organization of This Book**

There are a few signals that will help you understand the organization of this book. Once you know them, you should be able to find your way around easily.

**Like a newspaper, this book is formatted with columns of text and illustrations that run vertically.**

Information wraps from one column to the next and continues for as many pages as it needs to.

**Black bars are clues.**

A black bar at the top of a page signals the start of information about a product.

This information is divided into two sections, each signaled by a black bar. Product Information includes a description, additional notes, and dimensional drawings. Specification Information, which always begins at the top of a column, includes a series of steps. Each step represents a decision you need to make in order to complete your product number. Steps must be followed sequentially. The number of pages needed to complete information on a product varies; some will be complete in one page; others may fill three or four pages. Just continue going through the steps until you run into the next product, signaled by the black bar at the top of the page.

Black tabs running along the outside edge of the page help you locate what section you are in or what section you want to go to. You can thumb forwards or backwards to find a section; tabs and text appear on both sides of the page.

The additional pages in the back of the book include the appendices and indices. They are signaled by a long black bar running along the outside edge of the page.

**The index is presented two ways.**

The first index is in alphabetical order by product name. It can be helpful if you are new to the products and numbering scheme or if you are looking for a type of product, such as work chair or round table.

The second index is by product number. It lists, in alphanumeric order, the base product number, typically a five-digit number.

**General Information**

This book is effective October 7, 2024, subject to change without notice. Products may be purchased from authorized Herman Miller dealers who will quote prices upon request. For more information about our products and services or to see a list of dealers, visit [www.HermanMiller.com](http://www.HermanMiller.com).

All prices are list prices. Additional services, such as planning services, design, storage, and installation, are not included and must be added to these prices when the additional services are requested.

Illustrations, specifications, and prices are based on the latest information at the time of publication. The right is reserved to make changes at any time without notice in prices, fabrics, finishes, materials, specifications, and models, and also to discontinue models and finishes.

Dimensions shown in the drawings are engineering drawing dimensions rounded up to the nearest 1/8". Product is shipped set up or knocked down. Products that include "Shipped knocked down" in the description require some assembly. If this statement does not appear in the description, the product is shipped assembled.

Service problems are normally handled by a Herman Miller authorized dealer. Where this cannot be accomplished on a local level, service problems should be referred to the Customer Care Representative for your region, Herman Miller, Inc., Zeeland, Michigan 49464.

**20-Day or Less/Assigned Lead-Time Shipments**

All products and options in this price book not designated by an Assigned Program icon  will ship in **20 business days or less** after being acknowledged by Herman Miller.

Products and options designated by an  are on the assigned lead-time program and may ship in 20 days, less than 20 days, or more than 20 days from order acknowledgement.

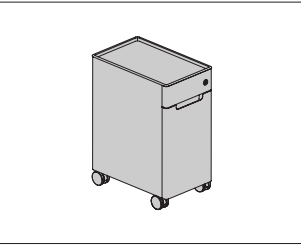
Storage

Accessories

Ambit™ Shroud

Work Tools





#### Product Information

##### Description

This pedestal is painted metal and comes on a foot or casters. It has 2 storage configurations with or without a lock and various top and bottom accessories.

##### Notes

Drawer, drawer (D) configuration with filing drawer insert (D) accommodates filing.

Casters allow storage unit to sit over height-adjustable table foot.

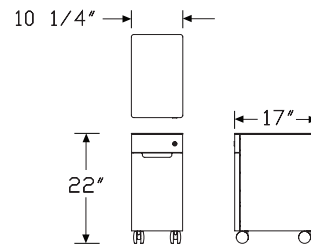
Overall storage height is the same with casters (C) or foot (F) base.

Order optional accessories separately:

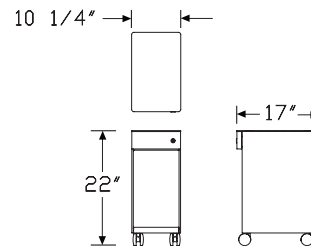
- Ambit™ personal filing drawer insert (IH300.)
- Ambit personal storage cushion top (IH350.)
- Ambit personal storage laminate bottom insert (IH351.)
- Ambit personal storage liner (IH352.)
- Ambit cork tray (IH353.)

See planning guide for additional information.

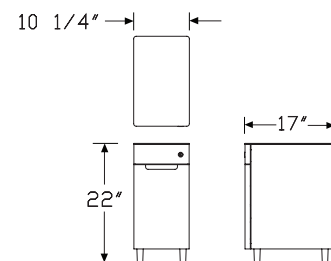
#### Dimensions



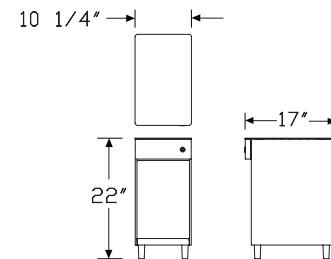
Drawer - Drawer with Caster



Drawer - Open with Caster



Drawer - Drawer with Glide



Drawer - Open with Glide

| Specification Information    |                          |
|------------------------------|--------------------------|
| Step 1.                      |                          |
| IH100.                       |                          |
| Step 2. Configuration        |                          |
| D                            | drawer, drawer           |
| P                            | drawer, open             |
| Step 3. Foot Option          |                          |
| C                            | caster, non-locking      |
| F                            | foot                     |
| Step 4. Depth                |                          |
| 17                           | 17" deep                 |
| Step 5. Width                |                          |
| 10                           | 10-1/4" wide             |
| Step 6. Height               |                          |
| 22                           | 22" high                 |
| Step 7. Lock                 |                          |
| L                            | lock                     |
| N                            | no lock                  |
| Step 8. Top Accessory        |                          |
| C                            | cushion top              |
| F                            | felt liner               |
| H                            | felt liner and cork tray |
| N                            | none                     |
| T                            | cork tray                |
| Step 9. Top Drawer Accessory |                          |
| N                            | none                     |
| Step 10. Bottom Accessory    |                          |

## For drawer, open (P)

|   |                                 |
|---|---------------------------------|
| L | thermally-fused laminate insert |
| N | none                            |

## For drawer, drawer (D)

|   |                       |
|---|-----------------------|
| D | filling drawer insert |
| N | none                  |

## Prices for Steps 1-10.

|        |   |   | 171022LCND | 171022LCNL | 171022LCNN | 171022LFND | 171022LFNL | 171022LFNN |
|--------|---|---|------------|------------|------------|------------|------------|------------|
| IH100. | D | C | \$1469     | —          | 1363       | 1381       | —          | 1275       |
|        |   | F | \$1469     | —          | 1363       | 1381       | —          | 1275       |
|        | P | C | —          | \$1252     | 1046       | —          | 1164       | 958        |
|        |   | F | —          | \$1252     | 1046       | —          | 1164       | 958        |
|        |   |   | 171022LHND | 171022LHNL | 171022LHNN | 171022LNND | 171022LNNL | 171022LNNN |
| IH100. | D | C | \$1569     | —          | 1463       | 1222       | —          | 1116       |
|        |   | F | \$1569     | —          | 1463       | 1222       | —          | 1116       |
|        | P | C | —          | \$1351     | 1145       | —          | 1003       | 797        |
|        |   | F | —          | \$1351     | 1145       | —          | 1003       | 797        |
|        |   |   | 171022LTND | 171022LTNL | 171022LTNN | 171022NCND | 171022NCNL | 171022NCNN |
| IH100. | D | C | \$1408     | —          | 1302       | 1412       | —          | 1306       |
|        |   | F | \$1408     | —          | 1302       | 1412       | —          | 1306       |
|        | P | C | —          | \$1191     | 985        | —          | 1195       | 989        |
|        |   | F | —          | \$1191     | 985        | —          | 1195       | 989        |
|        |   |   | 171022NFND | 171022NFNL | 171022NFNN | 171022NHND | 171022NHNL | 171022NHNN |
| IH100. | D | C | \$1326     | —          | 1220       | 1512       | —          | 1406       |
|        |   | F | \$1326     | —          | 1220       | 1512       | —          | 1406       |
|        | P | C | —          | \$1107     | 901        | —          | 1295       | 1089       |
|        |   | F | —          | \$1107     | 901        | —          | 1295       | 1089       |
|        |   |   | 171022NNND | 171022NNNL | 171022NNNN | 171022NTND | 171022NTNL | 171022NTNN |
| IH100. | D | C | \$1165     | —          | 1059       | 1352       | —          | 1246       |
|        |   | F | \$1165     | —          | 1059       | 1352       | —          | 1246       |
|        | P | C | —          | \$948      | 742        | —          | 1135       | 929        |
|        |   | F | —          | \$948      | 742        | —          | 1135       | 929        |

## Step 11. Finish

|            |                          |       |
|------------|--------------------------|-------|
| <b>611</b> | beige mist metallic (CP) | +\$0  |
| <b>613</b> | silver (CP)              | +\$0  |
| <b>SNA</b> | satin aluminum           | +\$30 |
| <b>SNB</b> | satin bronze             | +\$30 |
| <b>SNC</b> | satin carbon             | +\$30 |
| <b>8Q</b>  | folkstone grey (CP)      | +\$0  |
| <b>91</b>  | white (CP)               | +\$0  |
| <b>98</b>  | studio white (CP)        | +\$0  |
| <b>BK</b>  | black                    | +\$0  |
| <b>DB3</b> | glacier                  | +\$20 |
| <b>DN2</b> | nightfall                | +\$20 |
| <b>DR1</b> | canyon                   | +\$20 |
| <b>G1</b>  | graphite (CP)            | +\$0  |
| <b>OLF</b> | olive                    | +\$20 |
| <b>UBK</b> | ultra black (CP)         | +\$0  |
| <b>WL</b>  | warm stone (CP)          | +\$0  |
| <b>WN</b>  | warm grey neutral        | +\$0  |

## Step 12. Top Finish

|            |                     |      |
|------------|---------------------|------|
| <b>8Q</b>  | folkstone grey (CP) | +\$0 |
| <b>98</b>  | studio white (CP)   | +\$0 |
| <b>BK</b>  | black               | +\$0 |
| <b>UBK</b> | ultra black (CP)    | +\$0 |

## Step 13. Drawer Pull Finish

## For drawer, drawer (D)

|            |                     |      |
|------------|---------------------|------|
| <b>8Q</b>  | folkstone grey (CP) | +\$0 |
| <b>98</b>  | studio white (CP)   | +\$0 |
| <b>BK</b>  | black               | +\$0 |
| <b>UBK</b> | ultra black (CP)    | +\$0 |

## Step 14. Lock

## For lock (L)

|           |                           |      |
|-----------|---------------------------|------|
| <b>KA</b> | keyed alike               | +\$0 |
| <b>KC</b> | keyed differently, chrome | +\$0 |
| <b>KD</b> | keyed differently, black  | +\$0 |

## For no lock (N)

|           |         |      |
|-----------|---------|------|
| <b>NL</b> | no lock | +\$0 |
|-----------|---------|------|

## Step 15. Top Accessory Finish

## For felt liner (F) or felt liner and cork tray (H)

|                  |      |
|------------------|------|
| Price Category 4 | +\$0 |
|------------------|------|

## For cushion top (C)

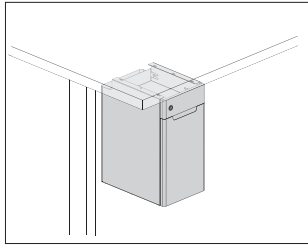
|                   |      |
|-------------------|------|
| Price Category 1  | +\$0 |
| Price Category 10 | +\$0 |
| Price Category 2  | +\$0 |
| Price Category 3  | +\$0 |
| Price Category 4  | +\$0 |
| Price Category 5  | +\$0 |
| Price Category 7  | +\$0 |
| Price Category 8  | +\$0 |
| Price Category 9  | +\$0 |
| Price Category B  | +\$0 |
| Price Category C  | +\$0 |
| Price Category D  | +\$0 |
| Price Category E  | +\$0 |
| Price Category F  | +\$0 |
| Price Category G  | +\$0 |
| Price Category H  | +\$0 |
| Price Category I  | +\$0 |
| Price Category J  | +\$0 |
| Price Category L  | +\$0 |
| Price Category M  | +\$0 |
| Price Category X  | +\$0 |
| Price Category Y  | +\$0 |

## Step 16. Bottom Accessory Finish

## For thermally-fused laminate insert (L)

|     |                          |      |
|-----|--------------------------|------|
| 125 | natural maple (CP)       | +\$0 |
| 126 | natural cherry (CP)      | +\$0 |
| 127 | walnut (CP)              | +\$0 |
| 139 | light ash (CP)           | +\$0 |
| 140 | warm ash (CP)            | +\$0 |
| 76  | light brown walnut       | +\$0 |
| 8Q  | folkstone grey (CP)      | +\$0 |
| 91  | white (CP)               | +\$0 |
| 98  | studio white (CP)        | +\$0 |
| CL  | cool grey neutral        | +\$0 |
| G1  | graphite (CP)            | +\$0 |
| HP  | light anigre             | +\$0 |
| LBA | clear on ash (CP)        | +\$0 |
| LBB | oak on ash (CP)          | +\$0 |
| LBC | walnut on ash (CP)       | +\$0 |
| LBF | neutral twill            | +\$0 |
| LBJ | graphite twill           | +\$0 |
| LBQ | white twill              | +\$0 |
| LBR | phantom ecru             | +\$0 |
| LBS | phantom cocoa            | +\$0 |
| LBU | medium matte walnut (CP) | +\$0 |
| LBV | warm grey teak           | +\$0 |
| LU  | soft white               | +\$0 |
| WL  | warm stone (CP)          | +\$0 |
| WN  | warm grey neutral        | +\$0 |





#### Product Information

##### Description

This suspended storage is painted metal and comes in 3 configurations: small, large open, and large closed. Options include a lock, and handed door opening on the large closed unit.

##### Notes

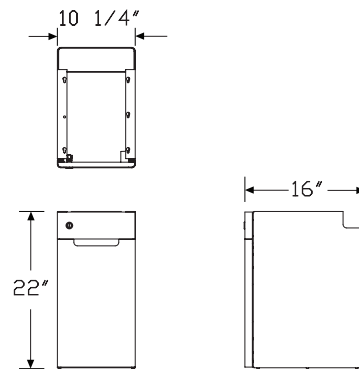
Suspended units must be mounted on inside of table leg.

Small and large open units are not handed. Lock is always on right side.

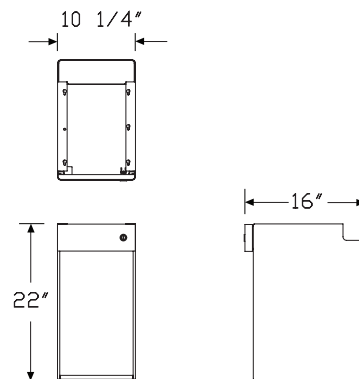
Suspended storage is designed to mount to the underside of 30"-deep, C-leg, standard range, height-adjustable tables.

See planning guide for additional information and for other height-adjustable table mounting capabilities.

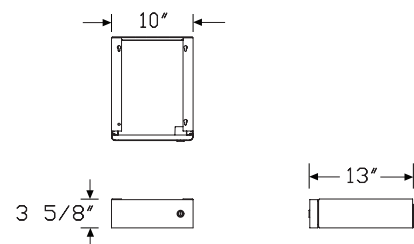
#### Dimensions



Large suspended storage



Open suspended storage



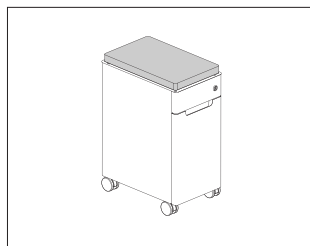
Small suspended storage

| Specification Information  |                                  |
|--|----------------------------------|
| Step 1.  |                                  |
| IH200.   |                                  |
| Step 2. Storage Type   |                                  |
| <b>C</b>   | large suspended storage, lock    |
| <b>K</b>   | small suspended storage, lock    |
| <b>L</b>   | large suspended storage, no lock |
| <b>S</b>   | small suspended storage, no lock |
| Step 3. Configuration  |                                  |
| <i>For small suspended storage, lock (K) or small suspended storage, no lock (S)</i> |                                  |
| <b>S</b>   | standard                         |
| <i>For large suspended storage, lock (C) or large suspended storage, no lock (L)</i> |                                  |
| <b>L</b>   | drawer, door hinged left         |
| <b>P</b>   | drawer, open                     |
| <b>R</b>   | drawer, door hinged right        |
| Step 4. Depth  |                                  |
| <i>For small suspended storage, lock (K) or small suspended storage, no lock (S)</i> |                                  |
| <b>13</b>  | 13" deep                         |
| <i>For large suspended storage, lock (C) or large suspended storage, no lock (L)</i> |                                  |
| <b>16</b>  | 16" deep                         |
| Step 5. Width  |                                  |
| <i>For small suspended storage, lock (K) or small suspended storage, no lock (S)</i> |                                  |
| <b>10</b>  | 10" wide                         |
| <i>For large suspended storage, lock (C) or large suspended storage, no lock (L)</i> |                                  |
| <b>10</b>  | 10-1/4" wide                     |
| Step 6. Top Drawer Accessory   |                                  |
| <b>N</b>   | none                             |
| Step 7. Bottom Accessory   |                                  |
| <b>N</b>   | none                             |

| Prices for Steps 1-7.   |                           |        |        |
|---|---------------------------|--------|--------|
|   |                           | 1310NN | 1610NN |
| IH200.  | <b>C L</b>                | —      | \$1108 |
|   | <b>P</b>                  | —      | \$853  |
|   | <b>R</b>                  | —      | \$1108 |
|   | <b>K S</b>                | \$586  | —      |
|   | <b>L L</b>                | —      | \$1053 |
|   | <b>P</b>                  | —      | \$796  |
|   | <b>R</b>                  | —      | \$1053 |
|   | <b>S S</b>                | \$531  | —      |
| Step 8. Finish  |                           |        |        |
| <b>611</b>  | beige mist metallic (CP)  |        | +\$0   |
| <b>613</b>  | silver (CP)               |        | +\$0   |
| <b>SNA</b>  | satin aluminum            |        | +\$30  |
| <b>SNB</b>  | satin bronze              |        | +\$30  |
| <b>SNC</b>  | satin carbon              |        | +\$30  |
| <b>8Q</b>   | folkstone grey (CP)       |        | +\$0   |
| <b>91</b>   | white (CP)                |        | +\$0   |
| <b>98</b>   | studio white (CP)         |        | +\$0   |
| <b>BK</b>   | black                     |        | +\$0   |
| <b>DB3</b>  | glacier                   |        | +\$20  |
| <b>DN2</b>  | nightfall                 |        | +\$20  |
| <b>DR1</b>  | canyon                    |        | +\$20  |
| <b>G1</b>   | graphite (CP)             |        | +\$0   |
| <b>OLF</b>  | olive                     |        | +\$20  |
| <b>UBK</b>  | ultra black (CP)          |        | +\$0   |
| <b>WL</b>   | warm stone (CP)           |        | +\$0   |
| <b>WN</b>   | warm grey neutral         |        | +\$0   |
| Step 9. Door Pull Finish  |                           |        |        |
| <i>For drawer, door hinged left (L) or drawer, door hinged right (R)</i>                |                           |        |        |
| <b>8Q</b>   | folkstone grey (CP)       |        | +\$0   |
| <b>98</b>   | studio white (CP)         |        | +\$0   |
| <b>BK</b>   | black                     |        | +\$0   |
| <b>UBK</b>  | ultra black (CP)          |        | +\$0   |
| Step 10. Lock   |                           |        |        |
| <i>For large suspended storage, lock (C) or small suspended storage, lock (K)</i>       |                           |        |        |
| <b>KA</b>   | keyed alike               |        | +\$0   |
| <b>KC</b>   | keyed differently, chrome |        | +\$0   |
| <b>KD</b>   | keyed differently, black  |        | +\$0   |
| <i>For large suspended storage, no lock (L) or small suspended storage, no lock (S)</i> |                           |        |        |
| <b>NL</b>   | no lock                   |        | +\$0   |

# Ambit™ Personal Storage Cushion Top

IH350.



## Product Information

### Description

This 1" fabric cushion top comes in 1 size and retrofits to an Ambit™ Workspace Solutions Personal Storage unit. Hook-and-loop fastener strips are included to attach cushion top to flat metal top. Package contains 1 cushion top.

### Notes

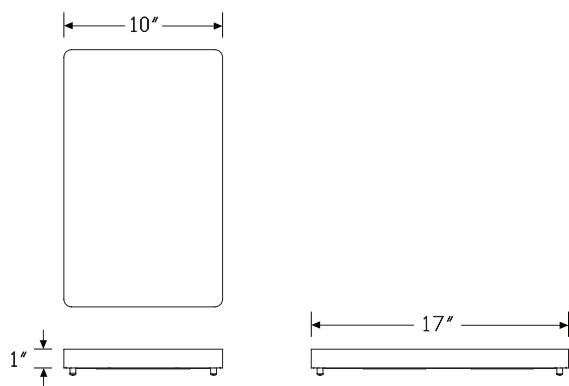
Compatible with the following products:

- Ambit personal storage (IH100.)

Cushion top accepts Customer's Own Material (COM). Order  $\frac{3}{4}$  yard of fabric per cushion. For odd number of cushions, round up to the next whole yard.

See planning guide for additional information.

### Dimensions



## Specification Information

### Step 1.

IH350.

### Step 2. Height

1 1" high

### Step 3. Depth

17 17" deep

### Step 4. Width

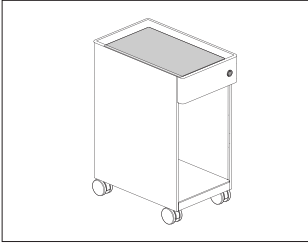
10 10" wide

### Prices for Steps 1-4.

|                    |              |
|--------------------|--------------|
|                    | <b>10</b>    |
| <b>IH350. 1 17</b> | <b>\$249</b> |

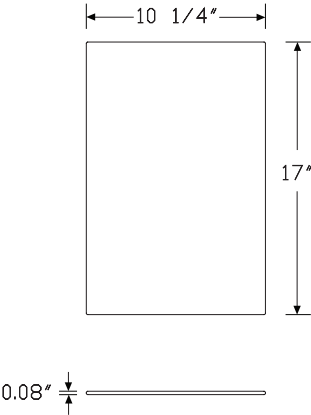
### Step 5. Cushion Top Fabric

|                   |         |
|-------------------|---------|
| Price Category 1  | +\$0    |
| Price Category 10 | +\$1272 |
| Price Category 11 | +\$209  |
| Price Category 2  | +\$52   |
| Price Category 3  | +\$73   |
| Price Category 4  | +\$97   |
| Price Category 5  | +\$124  |
| Price Category 7  | +\$176  |
| Price Category 8  | +\$319  |
| Price Category 9  | +\$1126 |
| Price Category B  | +\$35   |
| Price Category C  | +\$47   |
| Price Category D  | +\$61   |
| Price Category E  | +\$73   |
| Price Category F  | +\$95   |
| Price Category G  | +\$124  |
| Price Category H  | +\$150  |
| Price Category I  | +\$176  |
| Price Category L  | +\$0    |
| Price Category M  | +\$0    |
| Price Category X  | +\$0    |
| Price Category Y  | +\$0    |



Ambit™ Accessories

| Product Information  |
|--|
| Description  |
| This polyester felt liner comes in 1 size and fits onto an Ambit™ Workspace Solutions Personal Storage unit top. Liner is installed and movable without tools. Package contains 1 liner. |
| Notes  |
| Compatible with the following products: <ul style="list-style-type: none"><li>• Ambit personal storage (IH100.)</li></ul> See planning guide for additional information.                 |
| Dimensions   |

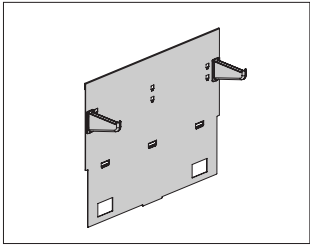


| Specification Information |
|---------------------------|
| Step 1.                   |
| IH352.                    |
| Step 2. Depth             |
| 1717" deep                |
| Step 3. Width             |
| 1010-1/4" wide            |
| Prices for Steps 1-3.     |
|                           |
| IH352. 17                 |
|                           |
| Step 4. Liner Finish      |
| Price Category 4          |

Ambit™ Personal Storage Filing

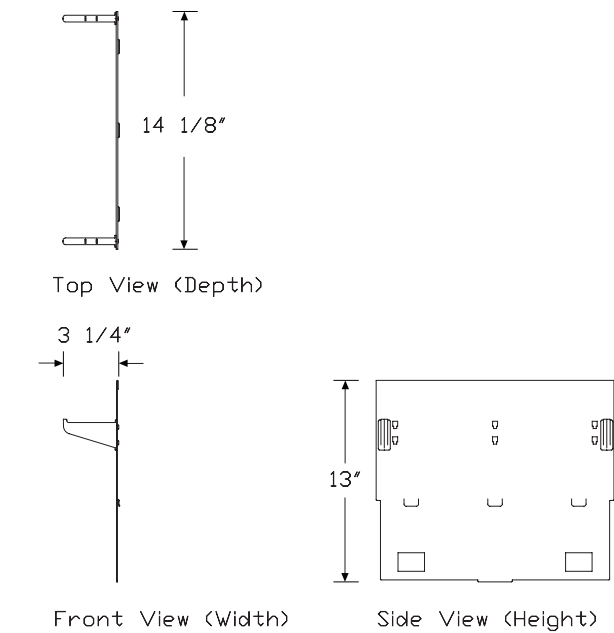
IH300.

Drawer Insert



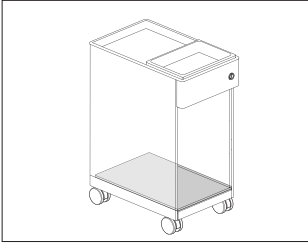
| Product Information   |
|---|
| <b>Description</b><br>This filing drawer insert is painted metal and inserts into an Ambit™ Workspace Solutions Personal Storage unit.  |
| <b>Notes</b><br>Filing insert is only available in ironstone (RS).<br>Depth of hooks on insert is 3".<br>Fits standard letter size of 8.5"×11" and A4 paper.<br>Insert is non-handed.<br>See planning guide for additional information. |
| <b>Dimensions</b>   |

| Specification Information  |
|--|
| <b>Step 1.</b><br>IH300.   |
| <b>Step 2. Depth</b><br>17      17" deep   |
| <b>Step 3. Filing</b><br>S      standard filing  |
| <b>Prices for Steps 1-3.</b>   |
| IH300. 17 <span style="float:right">S</span><br><span style="float:right">\$108</span> |



Ambit™ Personal Storage Laminate  
Bottom Insert

IH351.



Product Information

Description

This polyester felt liner comes in 1 size and fits onto an Ambit™ Workspace Solutions Personal Storage unit top. Liner is installed and movable without tools. Package contains 1 insert.

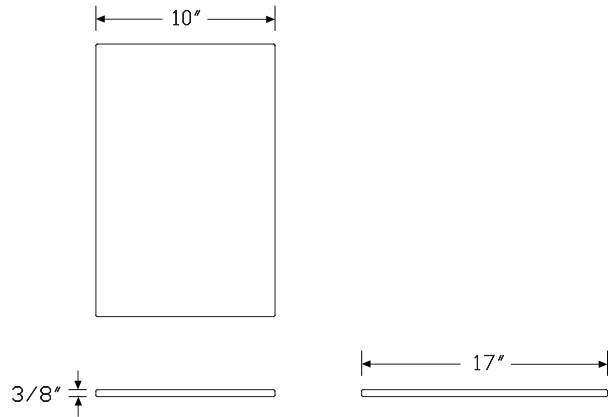
Notes

Compatible with the following products:

- Ambit personal storage (IH100.)

See planning guide for additional information.

Dimensions



Specification Information

Step 1.

IH351.

Step 2. Depth

17 17" deep

Step 3. Width

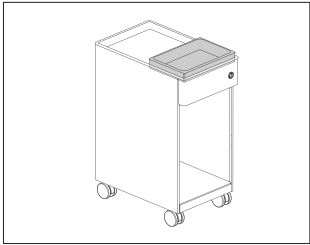
10 10" wide

Prices for Steps 1-3.

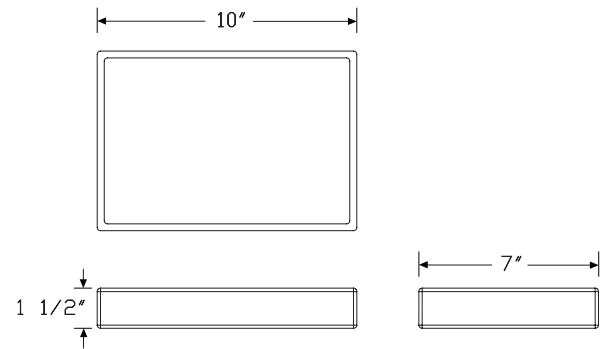
|           |       |
|-----------|-------|
|           | 10    |
| IH351. 17 | \$207 |

Step 4. Insert Finish

|     |                          |      |
|-----|--------------------------|------|
| 125 | natural maple (CP)       | +\$0 |
| 126 | natural cherry (CP)      | +\$0 |
| 127 | walnut (CP)              | +\$0 |
| 139 | light ash (CP)           | +\$0 |
| 140 | warm ash (CP)            | +\$0 |
| 76  | light brown walnut       | +\$0 |
| 8Q  | folkstone grey (CP)      | +\$0 |
| 91  | white (CP)               | +\$0 |
| 98  | studio white (CP)        | +\$0 |
| CL  | cool grey neutral        | +\$0 |
| G1  | graphite (CP)            | +\$0 |
| HP  | light anigre             | +\$0 |
| LBA | clear on ash (CP)        | +\$0 |
| LBB | oak on ash (CP)          | +\$0 |
| LBC | walnut on ash (CP)       | +\$0 |
| LBF | neutral twill            | +\$0 |
| LBJ | graphite twill           | +\$0 |
| LBQ | white twill              | +\$0 |
| LBR | phantom ecru             | +\$0 |
| LBS | phantom cocoa            | +\$0 |
| LBU | medium matte walnut (CP) | +\$0 |
| LBV | warm grey teak           | +\$0 |
| LU  | soft white               | +\$0 |
| WL  | warm stone (CP)          | +\$0 |
| WN  | warm grey neutral        | +\$0 |



| Product Information   |
|---|
| Description   |
| This cork tray provides space for personal items.                     |
| Notes   |
| Compatible with the following products or as a stand-alone accessory: |
| • Ambit™ personal storage (IH100.)                                    |
| • Ambit suspended storage (IH200.)                                    |
| See planning guide for additional information.                        |
| Dimensions  |



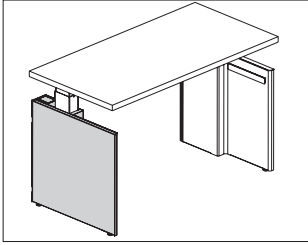
| Specification Information |
|---------------------------|
| Step 1.                   |
| IH353.                    |
| Step 2. Depth             |
| 07 7" deep                |
| Step 3. Width             |
| 10 10" wide               |
| Prices for Steps 1-3.     |
|                           |
| IH353. 07                 |
|                           |

10

\$170

## Ambit™ Height Adjustable Table Leg Shroud

DV8SM.  
DV8SN.  
DV8SR.



### Product Information

#### Description

This shroud stands on the floor and replaces the foot of the table. Shroud is available in all-metal, metal wrapper with laminate exterior panel, or metal wrapper with veneer exterior panel. A shroud can be added to one or both legs of a C-leg height-adjustable table. An optional tool rail can be specified.

#### Notes

Optional tool rail is not retrofittable.

Shroud is retrofittable to existing height-adjustable tables.

Distance between top of shroud and bottom of standard height-adjustable table range is 3.94".

Shroud not compatible with extended range height-adjustable tables.

Cable knockout at top-rear of shroud has bezel available in 3 colors.

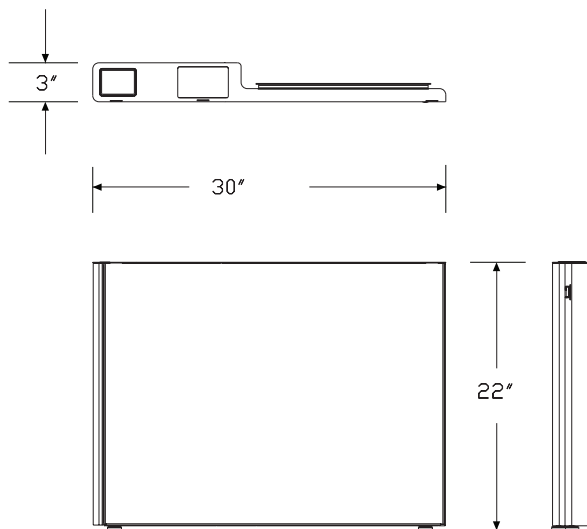
Cord cutout at bottom-rear of shroud can route up to 4 cords.

Order optional accessories together or separately:

- Bag hook (YT700.)
- Accessory shelf (YT715.)
- Vertical cable manager (DU16.)

See planning guide for additional information.

### Dimensions



### Specification Information

#### Step 1.

**DV8S**

#### Step 2. Table Type

- M.** Motia®  
**N.** Nevi  
**R.** Renew™

#### Step 3. Leg Type

- C** C-leg

#### Step 4. Depth

- 24** 24" deep (23" surface size)  
**30** 30" deep (29" surface size)

#### Step 5. Mechanism

- E** electric standard range

#### Step 6. Shroud Location

- L** left  
**R** right

#### Step 7. Shroud Option Left

##### For left (L)

- SL** high-pressure laminate panel + metal wrapper  
**SM** all metal  
**SW** veneer panel + metal wrapper

##### For right (R)

- SL** high-pressure laminate panel + metal wrapper  
**SM** all metal  
**SW** veneer panel + metal wrapper

#### Prices for Steps 1-7.

|                 |           | ELSL   | ELSM | ELSW | ERSL | ERSM | ERSW |
|-----------------|-----------|--------|------|------|------|------|------|
| <b>DV8SM. C</b> | <b>24</b> | \$1030 | 938  | 1228 | 1030 | 938  | 1228 |
|                 | <b>30</b> | \$1030 | 938  | 1228 | 1030 | 938  | 1228 |
| <b>DV8SN. C</b> | <b>24</b> | \$1030 | 938  | 1228 | 1030 | 938  | 1228 |
|                 | <b>30</b> | \$1030 | 938  | 1228 | 1030 | 938  | 1228 |
| <b>DV8SR. C</b> | <b>24</b> | \$1030 | 938  | 1228 | 1030 | 938  | 1228 |
|                 | <b>30</b> | \$1030 | 938  | 1228 | 1030 | 938  | 1228 |



# Ambit™ Height Adjustable Table Leg Shroud *continued*

## Step 8. Shroud Finish Left - Metal Wrapper

### Metallic Paint

#### For all metal (SM)

|            |                          |       |
|------------|--------------------------|-------|
| <b>611</b> | beige mist metallic (CP) | +\$0  |
| <b>613</b> | silver (CP)              | +\$0  |
| <b>SNA</b> | satin aluminum           | +\$30 |
| <b>SNB</b> | satin bronze             | +\$30 |
| <b>SNC</b> | satin carbon             | +\$30 |

### Sand Texture Paint

#### For all metal (SM)

|            |                     |       |
|------------|---------------------|-------|
| <b>8Q</b>  | folkstone grey (CP) | +\$0  |
| <b>91</b>  | white (CP)          | +\$0  |
| <b>98</b>  | studio white (CP)   | +\$0  |
| <b>BK</b>  | black               | +\$0  |
| <b>DB3</b> | glacier             | +\$20 |
| <b>DN2</b> | nightfall           | +\$20 |
| <b>DR1</b> | canyon              | +\$20 |
| <b>G1</b>  | graphite (CP)       | +\$0  |
| <b>OLF</b> | olive               | +\$20 |
| <b>UBK</b> | ultra black (CP)    | +\$0  |
| <b>WL</b>  | warm stone (CP)     | +\$0  |
| <b>WN</b>  | warm grey neutral   | +\$0  |

## Laminate

### For high-pressure laminate panel + metal wrapper (SL)

|            |                          |      |
|------------|--------------------------|------|
| <b>125</b> | natural maple (CP)       | +\$0 |
| <b>126</b> | natural cherry (CP)      | +\$0 |
| <b>127</b> | walnut (CP)              | +\$0 |
| <b>139</b> | light ash (CP)           | +\$0 |
| <b>140</b> | warm ash (CP)            | +\$0 |
| <b>UBK</b> | ultra black (CP)         | +\$0 |
| <b>76</b>  | light brown walnut       | +\$0 |
| <b>8Q</b>  | folkstone grey (CP)      | +\$0 |
| <b>91</b>  | white (CP)               | +\$0 |
| <b>98</b>  | studio white (CP)        | +\$0 |
| <b>CL</b>  | cool grey neutral        | +\$0 |
| <b>HF</b>  | inner tone light         | +\$0 |
| <b>HP</b>  | light anigre             | +\$0 |
| <b>LBA</b> | clear on ash (CP)        | +\$0 |
| <b>LBB</b> | oak on ash (CP)          | +\$0 |
| <b>LBC</b> | walnut on ash (CP)       | +\$0 |
| <b>LBF</b> | neutral twill            | +\$0 |
| <b>LBJ</b> | graphite twill           | +\$0 |
| <b>LBQ</b> | white twill              | +\$0 |
| <b>LBR</b> | phantom ecru             | +\$0 |
| <b>LBS</b> | phantom cocoa            | +\$0 |
| <b>LBU</b> | medium matte walnut (CP) | +\$0 |
| <b>LBV</b> | warm grey teak           | +\$0 |
| <b>LT</b>  | light tone               | +\$0 |
| <b>LU</b>  | soft white               | +\$0 |
| <b>WL</b>  | warm stone (CP)          | +\$0 |
| <b>WN</b>  | warm grey neutral        | +\$0 |

## Wood Veneer

### For veneer panel + metal wrapper (SW)

|           |                     |      |
|-----------|---------------------|------|
| <b>2U</b> | light brown walnut  | +\$0 |
| <b>40</b> | dark brown walnut   | +\$0 |
| <b>ET</b> | clear on ash        | +\$0 |
| <b>EU</b> | oak on ash          | +\$0 |
| <b>EV</b> | walnut on ash       | +\$0 |
| <b>EW</b> | medium matte walnut | +\$0 |
| <b>OU</b> | walnut              | +\$0 |
| <b>UL</b> | natural maple       | +\$0 |

Ambit™ Shroud

# Ambit™ Height Adjustable Table Leg Shroud *continued*

Ambit™ Shroud

## Step 9. Edge Finish Left

*For high-pressure laminate panel + metal wrapper (SL)*

|     |                          |      |
|-----|--------------------------|------|
| 125 | natural maple (CP)       | +\$0 |
| 126 | natural cherry (CP)      | +\$0 |
| 127 | walnut (CP)              | +\$0 |
| 139 | light ash (CP)           | +\$0 |
| 140 | warm ash (CP)            | +\$0 |
| G1  | graphite (CP)            | +\$0 |
| UBK | ultra black (CP)         | +\$0 |
| 76  | light brown walnut       | +\$0 |
| 8Q  | folkstone grey (CP)      | +\$0 |
| 91  | white (CP)               | +\$0 |
| 98  | studio white (CP)        | +\$0 |
| CL  | cool grey neutral        | +\$0 |
| HF  | inner tone light         | +\$0 |
| HP  | light anigre             | +\$0 |
| LBA | clear on ash (CP)        | +\$0 |
| LBB | oak on ash (CP)          | +\$0 |
| LBC | walnut on ash (CP)       | +\$0 |
| LBF | neutral twill            | +\$0 |
| LBJ | graphite twill           | +\$0 |
| LBQ | white twill              | +\$0 |
| LBR | phantom ecru             | +\$0 |
| LBS | phantom cocoa            | +\$0 |
| LBU | medium matte walnut (CP) | +\$0 |
| LBV | warm grey teak           | +\$0 |
| LU  | soft white               | +\$0 |
| MT  | medium tone              | +\$0 |
| WL  | warm stone (CP)          | +\$0 |
| WN  | warm grey neutral        | +\$0 |

## Step 10. Shroud Finish Left

*For high-pressure laminate panel + metal wrapper (SL) or veneer panel + metal wrapper (SW)*

### Metallic Paint

|     |                          |       |
|-----|--------------------------|-------|
| 611 | beige mist metallic (CP) | +\$0  |
| 613 | silver (CP)              | +\$0  |
| SNA | satin aluminum           | +\$30 |
| SNB | satin bronze             | +\$30 |
| SNC | satin carbon             | +\$30 |

### Sand Texture Paint

|     |                     |       |
|-----|---------------------|-------|
| UBK | ultra black (CP)    | +\$0  |
| 8Q  | folkstone grey (CP) | +\$0  |
| 91  | white (CP)          | +\$0  |
| 98  | studio white (CP)   | +\$0  |
| BK  | black               | +\$0  |
| G1  | graphite (CP)       | +\$0  |
| WL  | warm stone (CP)     | +\$0  |
| WN  | warm grey neutral   | +\$0  |
| DB3 | glacier             | +\$20 |
| DN2 | nightfall           | +\$20 |
| DR1 | canyon              | +\$20 |
| OLF | olive               | +\$20 |

## Step 11. Shroud Cable Management Bezel Left

*For left (L) with high-pressure laminate panel + metal wrapper (SL), all metal (SM), or veneer panel + metal wrapper (SW)*

|     |                     |      |
|-----|---------------------|------|
| 8Q  | folkstone grey (CP) | +\$0 |
| 98  | studio white (CP)   | +\$0 |
| BK  | black               | +\$0 |
| UBK | ultra black (CP)    | +\$0 |

## Step 12. Shroud Finish Right - Metal Wrapper

### Metallic Paint

*For all metal (SM)*

|     |                          |       |
|-----|--------------------------|-------|
| 611 | beige mist metallic (CP) | +\$0  |
| 613 | silver (CP)              | +\$0  |
| SNA | satin aluminum           | +\$30 |
| SNB | satin bronze             | +\$30 |
| SNC | satin carbon             | +\$30 |

### Sand Texture Paint

*For all metal (SM)*

|     |                     |       |
|-----|---------------------|-------|
| UBK | ultra black (CP)    | +\$0  |
| 8Q  | folkstone grey (CP) | +\$0  |
| 91  | white (CP)          | +\$0  |
| 98  | studio white (CP)   | +\$0  |
| BK  | black               | +\$0  |
| G1  | graphite (CP)       | +\$0  |
| WL  | warm stone (CP)     | +\$0  |
| WN  | warm grey neutral   | +\$0  |
| DB3 | glacier             | +\$20 |
| DN2 | nightfall           | +\$20 |
| DR1 | canyon              | +\$20 |
| OLF | olive               | +\$20 |

# Ambit™ Height Adjustable Table Leg Shroud *continued*

## For high-pressure laminate panel + metal wrapper (SL)

|            |                          |      |
|------------|--------------------------|------|
| <b>125</b> | natural maple (CP)       | +\$0 |
| <b>126</b> | natural cherry (CP)      | +\$0 |
| <b>127</b> | walnut (CP)              | +\$0 |
| <b>139</b> | light ash (CP)           | +\$0 |
| <b>140</b> | warm ash (CP)            | +\$0 |
| <b>UBK</b> | ultra black (CP)         | +\$0 |
| <b>76</b>  | light brown walnut       | +\$0 |
| <b>8Q</b>  | folkstone grey (CP)      | +\$0 |
| <b>91</b>  | white (CP)               | +\$0 |
| <b>98</b>  | studio white (CP)        | +\$0 |
| <b>CL</b>  | cool grey neutral        | +\$0 |
| <b>HF</b>  | inner tone light         | +\$0 |
| <b>HP</b>  | light anigre             | +\$0 |
| <b>LBA</b> | clear on ash (CP)        | +\$0 |
| <b>LBB</b> | oak on ash (CP)          | +\$0 |
| <b>LBC</b> | walnut on ash (CP)       | +\$0 |
| <b>LBF</b> | neutral twill            | +\$0 |
| <b>LBJ</b> | graphite twill           | +\$0 |
| <b>LBQ</b> | white twill              | +\$0 |
| <b>LBR</b> | phantom ecru             | +\$0 |
| <b>LBS</b> | phantom cocoa            | +\$0 |
| <b>LBU</b> | medium matte walnut (CP) | +\$0 |
| <b>LBV</b> | warm grey teak           | +\$0 |
| <b>LT</b>  | light tone               | +\$0 |
| <b>LU</b>  | soft white               | +\$0 |
| <b>WL</b>  | warm stone (CP)          | +\$0 |
| <b>WN</b>  | warm grey neutral        | +\$0 |

## Wood Veneer

### For veneer panel + metal wrapper (SW)

|           |                     |      |
|-----------|---------------------|------|
| <b>2U</b> | light brown walnut  | +\$0 |
| <b>40</b> | dark brown walnut   | +\$0 |
| <b>ET</b> | clear on ash        | +\$0 |
| <b>EU</b> | oak on ash          | +\$0 |
| <b>EV</b> | walnut on ash       | +\$0 |
| <b>EW</b> | medium matte walnut | +\$0 |
| <b>OU</b> | walnut              | +\$0 |
| <b>UL</b> | natural maple       | +\$0 |

## Step 13. Edge Finish Right

### For high-pressure laminate panel + metal wrapper (SL)

|            |                          |      |
|------------|--------------------------|------|
| <b>125</b> | natural maple (CP)       | +\$0 |
| <b>126</b> | natural cherry (CP)      | +\$0 |
| <b>127</b> | walnut (CP)              | +\$0 |
| <b>139</b> | light ash (CP)           | +\$0 |
| <b>140</b> | warm ash (CP)            | +\$0 |
| <b>G1</b>  | graphite (CP)            | +\$0 |
| <b>UBK</b> | ultra black (CP)         | +\$0 |
| <b>76</b>  | light brown walnut       | +\$0 |
| <b>8Q</b>  | folkstone grey (CP)      | +\$0 |
| <b>91</b>  | white (CP)               | +\$0 |
| <b>98</b>  | studio white (CP)        | +\$0 |
| <b>CL</b>  | cool grey neutral        | +\$0 |
| <b>HF</b>  | inner tone light         | +\$0 |
| <b>HP</b>  | light anigre             | +\$0 |
| <b>LBA</b> | clear on ash (CP)        | +\$0 |
| <b>LBB</b> | oak on ash (CP)          | +\$0 |
| <b>LBC</b> | walnut on ash (CP)       | +\$0 |
| <b>LBF</b> | neutral twill            | +\$0 |
| <b>LBJ</b> | graphite twill           | +\$0 |
| <b>LBQ</b> | white twill              | +\$0 |
| <b>LBR</b> | phantom ecru             | +\$0 |
| <b>LBS</b> | phantom cocoa            | +\$0 |
| <b>LBU</b> | medium matte walnut (CP) | +\$0 |
| <b>LBV</b> | warm grey teak           | +\$0 |
| <b>LU</b>  | soft white               | +\$0 |
| <b>MT</b>  | medium tone              | +\$0 |
| <b>WL</b>  | warm stone (CP)          | +\$0 |
| <b>WN</b>  | warm grey neutral        | +\$0 |

## Step 14. Shroud Finish Right

### For high-pressure laminate panel + metal wrapper (SL) or veneer panel + metal wrapper (SW)

## Metallic Paint

|            |                          |       |
|------------|--------------------------|-------|
| <b>611</b> | beige mist metallic (CP) | +\$0  |
| <b>613</b> | silver (CP)              | +\$0  |
| <b>SNA</b> | satin aluminum           | +\$30 |
| <b>SNB</b> | satin bronze             | +\$30 |
| <b>SNC</b> | satin carbon             | +\$30 |

# Ambit™ Height Adjustable Table Leg Shroud *continued*

Ambit™ Shroud

|                    |                     |       |
|--------------------|---------------------|-------|
| Sand Texture Paint |                     |       |
| <b>UBK</b>         | ultra black (CP)    | +\$0  |
| <b>8Q</b>          | folkstone grey (CP) | +\$0  |
| <b>91</b>          | white (CP)          | +\$0  |
| <b>98</b>          | studio white (CP)   | +\$0  |
| <b>BK</b>          | black               | +\$0  |
| <b>G1</b>          | graphite (CP)       | +\$0  |
| <b>WL</b>          | warm stone (CP)     | +\$0  |
| <b>WN</b>          | warm grey neutral   | +\$0  |
| <b>DB3</b>         | glacier             | +\$20 |
| <b>DN2</b>         | nightfall           | +\$20 |
| <b>DR1</b>         | canyon              | +\$20 |
| <b>OLF</b>         | olive               | +\$20 |

|   |                     |      |
|---|---------------------|------|
| Step 15. Shroud Cable Management Bezel Right  |                     |      |
| <i>For right (R) with high-pressure laminate panel + metal wrapper (SL), all metal (SM), or veneer panel + metal wrapper (SW)</i> |                     |      |
| <b>8Q</b>   | folkstone grey (CP) | +\$0 |
| <b>98</b>   | studio white (CP)   | +\$0 |
| <b>BK</b>   | black               | +\$0 |
| <b>UBK</b>  | ultra black (CP)    | +\$0 |

|  |                        |       |
|--|------------------------|-------|
| Step 16. Tool Rail Left  |                        |       |
| <i>For left (L) with high-pressure laminate panel + metal wrapper (SL), all metal (SM), or veneer panel + metal wrapper (SW)</i> |                        |       |
| <b>1</b>   | none                   | +\$0  |
| <b>2</b>   | Ubi work tool attached | +\$95 |

|   |  |        |
|---|--|--------|
| Step 17. Accessory Options Left   |  |        |
| <i>For 30" deep (29" surface size) (30) with left (L) with Ubi work tool attached (2)</i> |  |        |
| <b>A</b>  | None                                     | +\$0   |
| <b>B</b>  | YT700 - bag hook                         | +\$55  |
| <b>D</b>  | YT715 - small accessory shelf - no liner | +\$81  |
| <b>C</b>  | YT716 - document holder                  | +\$0   |
| <b>F</b>  | YT715 - sm. shelf with canyon liner      | +\$138 |
| <b>G</b>  | YT715 - sm. shelf with pesto liner       | +\$138 |
| <b>H</b>  | YT715 - sm. shelf with bayou liner       | +\$138 |
| <b>I</b>  | YT715 - sm. shelf with greystone liner   | +\$138 |
| <b>J</b>  | YT715 - sm. shelf with charcoal liner    | +\$138 |
| <b>E</b>  | YT715 - large accessory shelf - no liner | +\$187 |
| <b>K</b>  | YT715 - lg. shelf with canyon liner      | +\$297 |
| <b>L</b>  | YT715 - lg. shelf with pesto liner       | +\$297 |
| <b>M</b>  | YT715 - lg. shelf with bayou liner       | +\$297 |
| <b>N</b>  | YT715 - lg. shelf with greystone liner   | +\$297 |
| <b>O</b>  | YT715 - lg. shelf with charcoal liner    | +\$297 |

|   |  |        |
|---|--|--------|
| <i>For 24" deep (23" surface size) (24) with left (L) with Ubi work tool attached (2)</i> |  |        |
| <b>A</b>  | None                                     | +\$0   |
| <b>B</b>  | YT700 - bag hook                         | +\$55  |
| <b>D</b>  | YT715 - small accessory shelf - no liner | +\$81  |
| <b>F</b>  | YT715 - sm. shelf with canyon liner      | +\$138 |

|  |                   |      |
|--|-------------------|------|
| Step 18. Accessory Options Left Finish   |                   |      |
| <i>For YT700 - bag hook (B), YT715 - small accessory shelf - no liner (D), YT715 - sm. shelf with canyon liner (F), YT715 - sm. shelf with pesto liner (G), YT715 - sm. shelf with bayou liner (H), YT715 - sm. shelf with greystone liner (I), YT715 - sm. shelf with charcoal liner (J), YT715 - large accessory shelf - no liner (E), YT715 - lg. shelf with canyon liner (K), YT715 - lg. shelf with pesto liner (L), YT715 - lg. shelf with bayou liner (M), YT715 - lg. shelf with greystone liner (N), or YT715 - lg. shelf with charcoal liner (O)</i> |                   |      |
| <b>613</b>   | silver (CP)       | +\$0 |
| <b>UBK</b>   | ultra black (CP)  | +\$0 |
| <b>91</b>  | white (CP)        | +\$0 |
| <b>98</b>  | studio white (CP) | +\$0 |
| <b>BK</b>  | black             | +\$0 |
| <b>G1</b>  | graphite (CP)     | +\$0 |

|   |                        |       |
|---|------------------------|-------|
| Step 19. Tool Rail Right  |                        |       |
| <i>For right (R) with high-pressure laminate panel + metal wrapper (SL), all metal (SM), or veneer panel + metal wrapper (SW)</i> |                        |       |
| <b>1</b>  | none                   | +\$0  |
| <b>2</b>  | Ubi work tool attached | +\$95 |

# Ambit™ Height Adjustable Table Leg

## Shroud *continued*

### Step 20. Accessory Options Right

*For 30" deep (29" surface size) (30) with right (R) with Ubi work tool attached (2)*

|          |  |        |
|----------|--|--------|
| <b>A</b> | None                                     | +\$0   |
| <b>B</b> | YT700 - bag hook                         | +\$55  |
| <b>D</b> | YT715 - small accessory shelf - no liner | +\$81  |
| <b>C</b> | YT716 - document holder                  | +\$0   |
| <b>F</b> | YT715 - sm. shelf with canyon liner      | +\$138 |
| <b>G</b> | YT715 - sm. shelf with pesto liner       | +\$138 |
| <b>H</b> | YT715 - sm. shelf with bayou liner       | +\$138 |
| <b>I</b> | YT715 - sm. shelf with greystone liner   | +\$138 |
| <b>J</b> | YT715 - sm. shelf with charcoal liner    | +\$138 |
| <b>E</b> | YT715 - large accessory shelf - no liner | +\$187 |
| <b>K</b> | YT715 - lg. shelf with canyon liner      | +\$297 |
| <b>L</b> | YT715 - lg. shelf with pesto liner       | +\$297 |
| <b>M</b> | YT715 - lg. shelf with bayou liner       | +\$297 |
| <b>N</b> | YT715 - lg. shelf with greystone liner   | +\$297 |
| <b>O</b> | YT715 - lg. shelf with charcoal liner    | +\$297 |

*For 24" deep (23" surface size) (24) with right (R) with Ubi work tool attached (2)*

|          |  |        |
|----------|--|--------|
| <b>A</b> | None                                     | +\$0   |
| <b>B</b> | YT700 - bag hook                         | +\$55  |
| <b>D</b> | YT715 - small accessory shelf - no liner | +\$81  |
| <b>F</b> | YT715 - sm. shelf with canyon liner      | +\$138 |

### Step 21. Accessory Options Right Finish

*For YT700 - bag hook (B), YT715 - small accessory shelf - no liner (D), YT715 - sm. shelf with canyon liner (F), YT715 - sm. shelf with pesto liner (G), YT715 - sm. shelf with bayou liner (H), YT715 - sm. shelf with greystone liner (I), YT715 - sm. shelf with charcoal liner (J), YT715 - large accessory shelf - no liner (E), YT715 - lg. shelf with canyon liner (K), YT715 - lg. shelf with pesto liner (L), YT715 - lg. shelf with bayou liner (M), YT715 - lg. shelf with greystone liner (N), or YT715 - lg. shelf with charcoal liner (O)*

|            |                   |      |
|------------|-------------------|------|
| <b>613</b> | silver (CP)       | +\$0 |
| <b>UBK</b> | ultra black (CP)  | +\$0 |
| <b>91</b>  | white (CP)        | +\$0 |
| <b>98</b>  | studio white (CP) | +\$0 |
| <b>BK</b>  | black             | +\$0 |
| <b>G1</b>  | graphite (CP)     | +\$0 |

### Step 22. Vertical Cable Management

|          |                 |        |
|----------|-----------------|--------|
| <b>1</b> | none            | +\$0   |
| <b>3</b> | shroud attached | +\$156 |

### Step 23. Vertical Cable Management Attachment

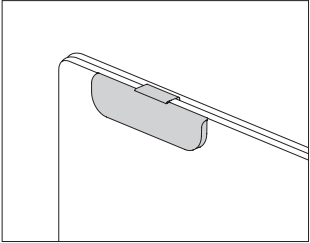
*For shroud attached (3)*

|          |                                   |      |
|----------|-----------------------------------|------|
| <b>2</b> | workspace connected               | +\$0 |
| <b>3</b> | horizontal cable trough connected | +\$0 |

### Step 24. Vertical Cable Management Finish

|            |                  |      |
|------------|------------------|------|
| <b>UBK</b> | ultra black (CP) | +\$0 |
| <b>BK</b>  | black            | +\$0 |
| <b>SY</b>  | silver grey      | +\$0 |

Ambit™ Shroud



Product Information

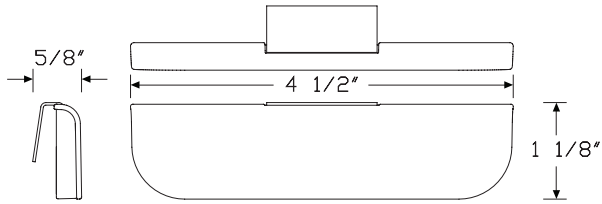
Description

This clear name tag hangs on frameless fabric screens and PET screens or magnetically attaches to a variety of work tool products.

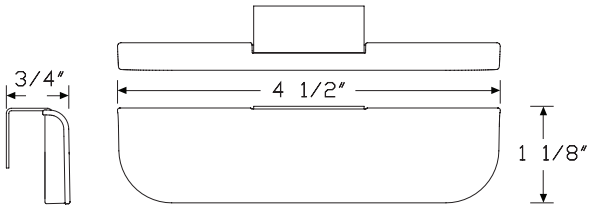
Notes

Name tag with magnetic bracket (M) can attach to the small organizer (YT100.), large organizer (YT150.), or shelf with backdrop (YT300.xxxxxxB).  
Name tag with Pari screen bracket (P) or flat edge screen bracket (S) can hang on any HermanMiller Pari screen or flat edge screen.  
Order name tag insert (O.YT1900) separately through Sales Source.

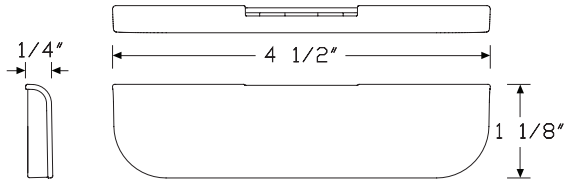
Dimensions



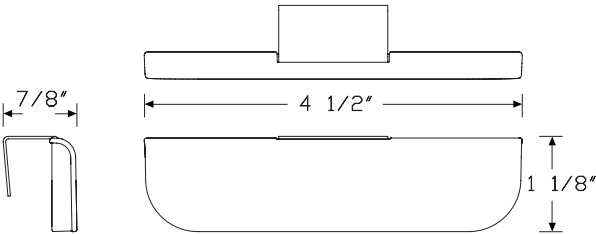
Pari Screen



Flat Edge Screen



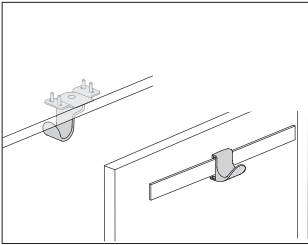
Magnetic



Thin Profile Fabric Screen or PET Screen

Name Tag *continued*

| Specification Information                      |   |      |    |    |    |    |
|--|---|------|----|----|----|----|
| Step 1.  |   |      |    |    |    |    |
| YT410. <input type="text" value="A"/>          |   |      |    |    |    |    |
| Step 2. Width                                  |   |      |    |    |    |    |
| 05      5" wide <input type="text" value="A"/> |   |      |    |    |    |    |
| Step 3. Bracket Type                           |   |      |    |    |    |    |
| P  | Pari Screen <input type="text" value="A"/>                |      |    |    |    |    |
| S  | flat edge screen <input type="text" value="A"/>           |      |    |    |    |    |
| D  | PET screen <input type="text" value="A"/>                 |      |    |    |    |    |
| F  | thin-profile fabric screen <input type="text" value="A"/> |      |    |    |    |    |
| M  | magnetic <input type="text" value="A"/>                   |      |    |    |    |    |
| Prices for Steps 1-3.                          |   |      |    |    |    |    |
|  |   | P    | S  | D  | F  | M  |
| YT410.   | 05  | \$49 | 49 | 49 | 49 | 49 |



Product Information

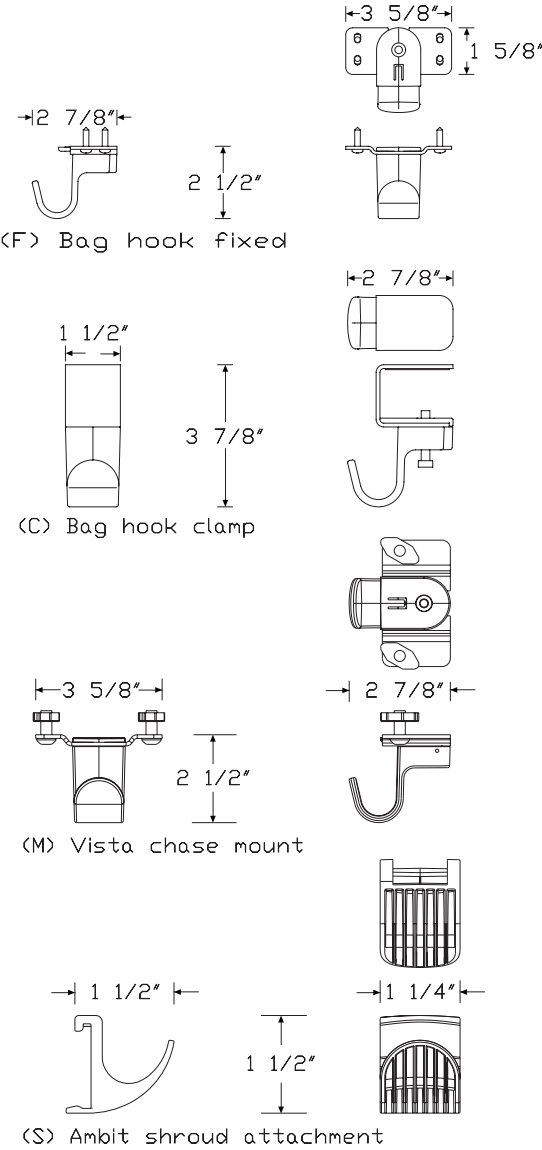
Description

This bag hook clamps to a work surface, mounts under the surface with screws, mounts to the underside of the Canvas Vista™ chase, or attaches to the Ambit™ shroud. The hook rotates 360° to hold the bag under the surface. Clamp mount is easily moved by the user. Fixed attachment option includes attachment hardware.

Notes

Clamp attaches to work surfaces from 3/4" to 1 1/8" thick.  
Maximum weight capacity is 15 pounds for clamp and fixed attachment;  
maximum weight capacity for hook attached to rail is 35 pounds.  
Vista chase mount (M) attaches to underside of Canvas Vista chase (FG110.). Attachment hardware included. It is user movable. For additional information, see Canvas Vista planning guide.

Dimensions





# **Specification Information**

## Step 1.

**YT700.** ☐

## Step 2. Attachment Type

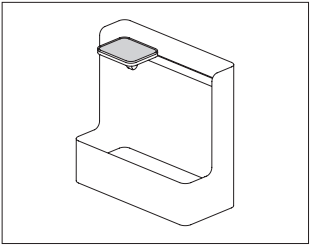
**S** shroud ☐  
**C** clamp ☐  
**F** fixed ☐  
**M** chase mount ☐

## Prices for Steps 1-2.

|                 |      |
|-----------------|------|
| <b>YT700. S</b> | \$62 |
| <b>C</b>        | \$70 |
| <b>F</b>        | \$70 |
| <b>M</b>        | \$67 |

## Step 3. Finish

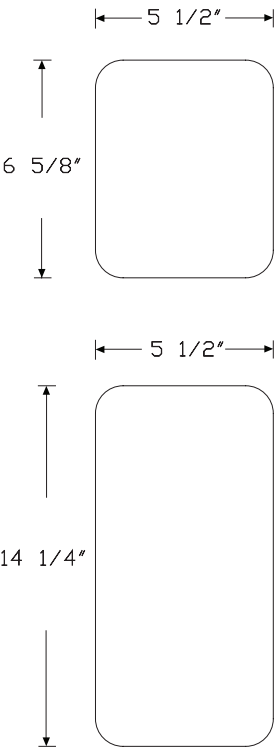
|  |      |
|--|------|
| <b>613</b> silver (CP) <input type="checkbox"/>      | +\$0 |
| <b>UBK</b> ultra black (CP) <input type="checkbox"/> | +\$0 |
| <b>91</b> white (CP) <input type="checkbox"/>        | +\$0 |
| <b>98</b> studio white (CP) <input type="checkbox"/> | +\$0 |
| <b>BK</b> black <input type="checkbox"/>             | +\$0 |
| <b>G1</b> graphite (CP) <input type="checkbox"/>     | +\$0 |



| Product Information  |
|--|
| Description  |
| This liner retrofits to the accessory shelf used with the mobile bag catch or Ambit™ shroud. It is user movable without tools. Top material is polyester felt. |
| Notes  |
| Shelf liner is compatible with mobile bag catch (YT710.) and accessory shelf (YT715.).   |
| Dimensions   |

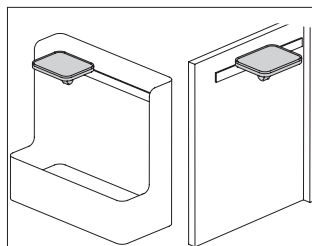
| Specification Information       |
|---------------------------------|
| Step 1.                         |
| YT565. <span>A</span>           |
| Step 2. Width                   |
| 06 6" wide <span>A</span>       |
| Step 3. Depth                   |
| For 6" wide (06)                |
| 07 7" deep <span>A</span>       |
| Prices for Steps 1-3.           |
|                                 |
| 07                              |
| YT565. 06                       |
| \$70                            |
| Step 4. Liner Finish            |
| Price Category 4 <span>A</span> |
| +\$0                            |

Ambit™ Work Tools



## Accessory Shelf

YT715.



### Product Information

#### Description

This painted metal shelf can be retrofit to the mobile bag catch or Ambit™ shroud. An optional liner is available in a choice of colors.

#### Notes

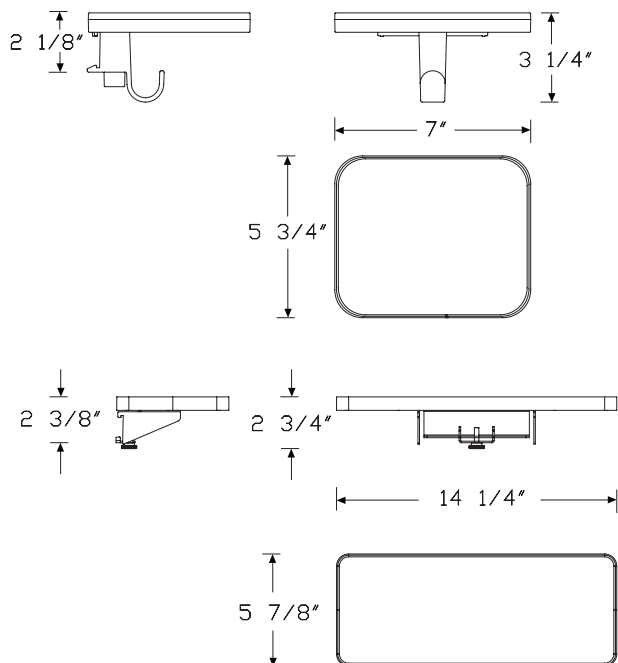
Bag hook included for mobile bag catch (BC) attachment and shroud attachment for 24" deep tables (S2) options.

Shroud attachment for 30" deep tables (S3) option is shelf only.

Order the following products separately:

- Mobile bag catch (YT710.)
- Ambit height adjustable table leg shroud (DV8S)
- Accessory shelf liner (YT565.)

#### Dimensions



### Specification Information

#### Step 1.

YT715. ☐

#### Step 2. Shelf Product Attachment

BC mobile bag catch ☐

S2 shroud - 24" deep tables ☐

S3 shroud - 30" deep tables ☐

#### Step 3. Width

For mobile bag catch (BC) or shroud - 30" deep tables (S3)

15 15" wide ☐

06 6" wide ☐

For shroud - 24" deep tables (S2)

06 6" wide ☐

#### Step 4. Depth

For 6" wide (06)

07 7" deep ☐

For 15" wide (15)

06 6" deep ☐

#### Step 5. Shelf Material

M painted metal ☐

L insert liner ☐

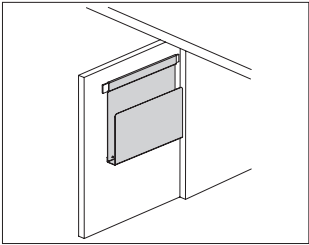
#### Prices for Steps 1-5.

|              | 06M   | 06L | 07M   | 07L |
|--------------|-------|-----|-------|-----|
| YT715. BC 15 | \$232 | 368 | —     | —   |
| 06           | —     | —   | \$155 | 91  |
| S2 06        | —     | —   | \$91  | 155 |
| S3 15        | \$232 | 368 | —     | —   |
| 06           | —     | —   | \$91  | 155 |

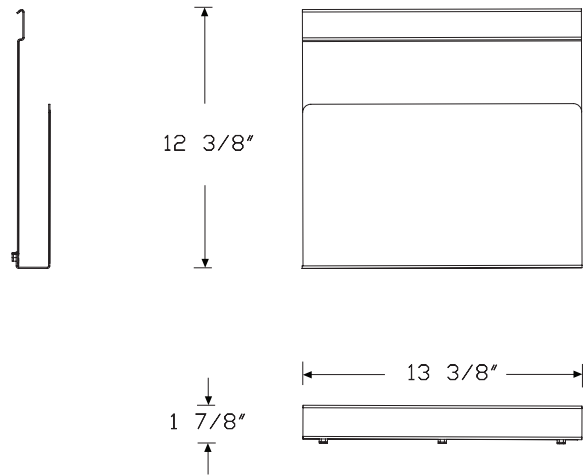
#### Step 6. Mobile Bag Catch Shelf Finish

|     |  |      |
|-----|--|------|
| 613 | silver (CP) <input type="checkbox"/>       | +\$0 |
| UBK | ultra black (CP) <input type="checkbox"/>  | +\$0 |
| 91  | white (CP) <input type="checkbox"/>        | +\$0 |
| 98  | studio white (CP) <input type="checkbox"/> | +\$0 |
| BK  | black <input type="checkbox"/>             | +\$0 |
| G1  | graphite (CP) <input type="checkbox"/>     | +\$0 |

|                             |                   |
|-----------------------------|-------------------|
| Step 7. Insert Liner Finish |                   |
| <i>For insert liner (L)</i> |                   |
| Price Category 4            | <div>A</div> +\$0 |

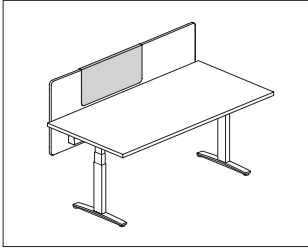


| Product Information   |
|---|
| Description   |
| This document holder rests on the optional tool rail of the Ambit™ Shroud. It has a painted metal surface and is designed to hold folders or personal office items. |
| Notes   |
| Document holder designed for use with Ambit shroud (DV8S) with tool rail (2) option.  |
| Not available for use as a stand-alone accessory.   |
| See planning guide for additional information.  |
| Dimensions  |



| Specification Information                                  |
|--|
| Step 1.  |
| YT716. <input type="checkbox"/>                            |
| Step 2. Shelf Product Attachment                           |
| S3 shroud - 30" deep tables <input type="checkbox"/>       |
| Prices for Steps 1-2.                                      |
| YT716. S3 \$193  |
| Step 3. Finish   |
| 8Q folkstone grey (CP) <input type="checkbox"/> +\$0       |
| 91 white (CP) <input type="checkbox"/> +\$0                |
| 98 studio white (CP) <input type="checkbox"/> +\$0         |
| BK black <input type="checkbox"/> +\$0                     |
| DB3 glacier <input type="checkbox"/> +\$10                 |
| DN2 nightfall <input type="checkbox"/> +\$10               |
| DR1 canyon <input type="checkbox"/> +\$10                  |
| G1 graphite (CP) <input type="checkbox"/> +\$0             |
| OLF olive <input type="checkbox"/> +\$10                   |
| UBK ultra black (CP) <input type="checkbox"/> +\$0         |
| WL warm stone (CP) <input type="checkbox"/> +\$0           |
| WN warm grey neutral <input type="checkbox"/> +\$0         |
| 611 beige mist metallic (CP) <input type="checkbox"/> +\$0 |
| 613 silver (CP) <input type="checkbox"/> +\$0              |
| SNA satin aluminum <input type="checkbox"/> +\$15          |
| SNB satin bronze <input type="checkbox"/> +\$15            |
| SNC satin carbon <input type="checkbox"/> +\$15            |

## Metal Marker Board, Screen Attached Y1124.



### Product Information

#### Description

This magnetic metal board overlays an existing laminate, Pari™ fabric, flat-edge fabric, PET, or fabric-wrapped LDF surface-attached screen. It has a frameless, all-metal design with a straight edge. It accepts magnets and can be dry-erase marker writable when specified as a marker board.

#### Notes

Order laminate, Pari or flat-edge profile fabric, PET, and fabric-wrapped LDF screens separately.

Metal board hangs on top edge of HermanMiller® laminate screen, Pari or flat-edge fabric screen, PET, and fabric-wrapped LDF screen.

When specifying marker board (Y1124.xM) option, the marker board is an included applique magnetically applied in the field.

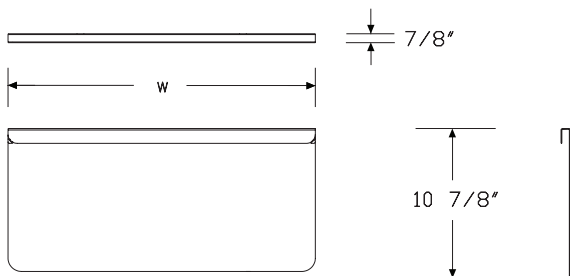
Board with tray (Y1124.FxxxxT) option comes with an angled  $\frac{3}{4}$ " lip at bottom of board.

For optimal use, pair with dark fabric screens.

Order the following accessories separately:

- Magnetic document clip (YT400.)
- Magnetic name tag (YT410.05M)
- Pari screen, height adjustable table (Y1116.)
- Surface attached screen, flat edge (Y1118.)
- Laminate screen, surface attached (Y1120.)

### Dimensions



### Specification Information

#### Step 1.

Y1124.

#### Step 2. Screen Attachment Type

- D thin profile fabric screen
- L laminate
- E PET
- F fabric

#### Step 3. Surface Finish

- P painted metal
- M marker board

#### Step 4. Height

- 11 11" high

#### Step 5. Width

- 24 24" wide
- 30 30" wide

#### Step 6. Tray

For thin profile fabric screen (D), laminate (L), or PET (E)

- N no tray

For fabric (F)

- N no tray
- T tray

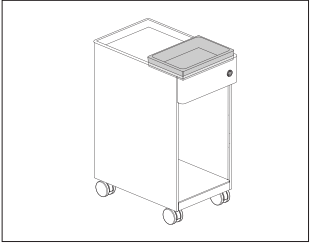
#### Prices for Steps 1-6.

|        |   |   | 1124N | 1124T | 1130N | 1130T |
|--------|---|---|-------|-------|-------|-------|
| Y1124. | D | P | \$176 | —     | 188   | —     |
|        |   | M | \$246 | —     | 273   | —     |
|        | L | P | \$140 | —     | 153   | —     |
|        |   | M | \$246 | —     | 273   | —     |
|        | E | P | \$176 | —     | 188   | —     |
|        |   | M | \$246 | —     | 273   | —     |
|        | F | P | \$176 | 176   | 188   | 188   |
|        |   | M | \$246 | 246   | 273   | 273   |

## Metal Marker Board, Screen Attached

*continued*

| Step 7. Finish |   |       |
|----------------|---|-------|
| <b>611</b>     | beige mist metallic (CP) <input type="checkbox"/> | +\$0  |
| <b>613</b>     | silver (CP) <input type="checkbox"/>              | +\$0  |
| <b>EH</b>      | metallic bronze <input type="checkbox"/>          | +\$0  |
| <b>SNA</b>     | satin aluminum <input type="checkbox"/>           | +\$10 |
| <b>SNB</b>     | satin bronze <input type="checkbox"/>             | +\$10 |
| <b>SNC</b>     | satin carbon <input type="checkbox"/>             | +\$10 |
| <b>UBK</b>     | ultra black (CP) <input type="checkbox"/>         | +\$0  |
| <b>8Q</b>      | folkstone grey (CP) <input type="checkbox"/>      | +\$0  |
| <b>91</b>      | white (CP) <input type="checkbox"/>               | +\$0  |
| <b>98</b>      | studio white (CP) <input type="checkbox"/>        | +\$0  |
| <b>BK</b>      | black <input type="checkbox"/>                    | +\$0  |
| <b>CL</b>      | cool grey neutral <input type="checkbox"/>        | +\$0  |
| <b>G1</b>      | graphite (CP) <input type="checkbox"/>            | +\$0  |
| <b>WL</b>      | warm stone (CP) <input type="checkbox"/>          | +\$0  |
| <b>WN</b>      | warm grey neutral <input type="checkbox"/>        | +\$0  |



Product Information

Description

This cork tray provides space for personal items.

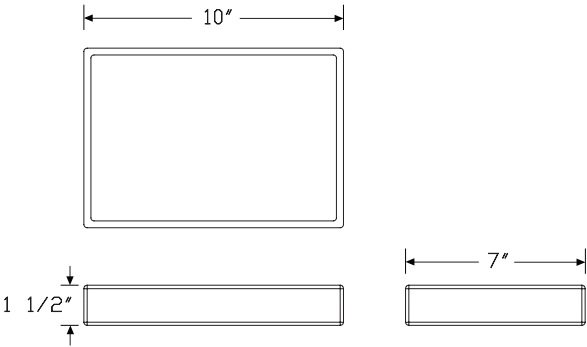
Notes

Compatible with the following products or as a stand-alone accessory:

- Ambit™ personal storage (IH100.)
- Ambit suspended storage (IH200.)

See planning guide for additional information.

Dimensions



Specification Information

Step 1.

IH353.

Step 2. Depth

07 7" deep

Step 3. Width

10 10" wide

Prices for Steps 1-3.

|           |       |
|-----------|-------|
|           | 10    |
| IH353. 07 | \$170 |



## Index by Product Name

| <b>Ambit™ Workspace Solutions</b>              |            |
|--|------------|
| Accessory Shelf                                | page(s) 27 |
| Ambit™ Cork Tray                               | 15, 32     |
| Ambit™ Document Holder                         | 29         |
| Ambit™ Height Adjustable Table Leg Shroud      | 16         |
| Ambit™ Personal Storage                        | 5          |
| Ambit™ Personal Storage Cushion Top            | 11         |
| Ambit™ Personal Storage Filing Drawer Insert   | 13         |
| Ambit™ Personal Storage Laminate Bottom Insert | 14         |
| Ambit™ Personal Storage Liner                  | 12         |
| Ambit™ Suspended Storage                       | 9          |
| Bag Hook                                       | 24         |
| Metal Marker Board, Screen Attached            | 30         |
| Mobile Bag Catch Shelf Liner                   | 26         |
| Name Tag                                       | 22         |



## Index by Product Number

|   |            |
|---|------------|
| DV8SM. Ambit™ Height Adjustable Table Leg Shroud      | page(s) 16 |
| DV8SN.  |            |
| DV8SR.  |            |
| IH100. Ambit™ Personal Storage                        | 5          |
| IH200. Ambit™ Suspended Storage                       | 9          |
| IH300. Ambit™ Personal Storage Filing Drawer Insert   | 13         |
| IH350. Ambit™ Personal Storage Cushion Top            | 11         |
| IH351. Ambit™ Personal Storage Laminate Bottom Insert | 14         |
| IH352. Ambit™ Personal Storage Liner                  | 12         |
| IH353. Ambit™ Cork Tray                               | 15, 32     |
| Y1124. Metal Marker Board, Screen Attached            | 30         |
| YT410. Name Tag                                       | 22         |
| YT565. Mobile Bag Catch Shelf Liner                   | 26         |
| YT700. Bag Hook                                       | 24         |
| YT715. Accessory Shelf                                | 27         |
| YT716. Ambit™ Document Holder                         | 29         |





## 20-Day or Less/Assigned Lead-Time Order Information

GSA

### 20-Day or Less and Assigned Lead-Time Programs

20-day or less and assigned lead-time products are designed for established Herman Miller dealers with pre-approved credit.

Products are distributed from multiple manufacturing facilities across the United States. All products and options not designated by an Assigned Lead-Time icon  will ship in 20 business days or less after being acknowledged by Herman Miller. Products and options designated by an  are on the assigned lead-time program and will ship in 20 days, less than 20 days, or more than 20 days from order acknowledgement.

### Ordering Procedure

Please place orders through Order Manager. If this is not available to you, place orders through mail or fax. Verbal purchase orders will not be accepted.

Order Entry fax number for Meridian® Filing and Storage:

(616) 846 9236.

Order Entry fax number for all other products:

(616) 654 3085.

For more information, contact your Customer Care representative at:

(866) 854 3048 ext 3400.

### Shipments and Delivery

Per Herman Miller Terms and Conditions.

### Changes and Cancellation

Per Herman Miller Terms and Conditions.



# Customer's Own Material Order Information — Workspaces

GSA

## Customer's Own Material

### Program Overview

The Customer's Own Material (COM) program gives you the option of using textiles other than those listed. Herman Miller will test textiles for application to Herman Miller products and will process orders for those with approved COM textiles only. COM textiles are on assigned lead times.

Omni lists an overview of fabrics that have been tested and indicates whether or not they were approved for application to Herman Miller products.

Specific information on the terms and conditions, testing, approval, and ordering process for COM is listed below. Questions about the COM program and requests for assistance may be directed to your COM representative at:

(616) 654 3400

(866) 854 3048 ext 6543400

### Customer's Own Material Warranty

Herman Miller does not warrant COM textiles. COM textiles are tested for application only; they are not tested for performance. The Herman Miller warranty does apply to the underlying products.

Suppliers of COM textiles are responsible for color consistency within commercial tolerances, UV stability, and resistance to soiling and perspiration.

### Customer's Own Material Pricing

COM is a Category 1 fabric. There are no application charges for COM fabrics.

Ordering and payment for COM textile yardage are the responsibility of the customer and the textile supplier.

If desired, Herman Miller will purchase COM textiles directly from Maharam, Camira, C.F. Stinson, Guilford of Maine, Luna Textiles, Momentum Textiles and Ultrafabrics to simplify ordering and shipment. For this service, refer to the Supplier Connection program.

### Application Note

Herman Miller does not guarantee that Customer's Own Material (COM) fabric patterns will align across panels/tiles or from one screen to the next. We also do not guarantee that COM fabric designs will be positioned consistently in the same location across several panels, tiles, or screens.

### Textile Approval

1. Select a COM textile and a Herman Miller product.
2. If your textile does not show as tested in Omni, submit a request. You will be required to select a specific color of the textile and feature of the product to test, i.e., seat, back, etc.
3. Herman Miller will notify you of approval or disapproval within 4 days from receipt of the test yardage.

Customer’s Own Material  
Order Information —  
Workspaces

continued

GSA

Ordering Products with COM

1. Refer to the specific products to determine the yardage required for COM textiles.  
*Note: Yardage requirements are based on nondirectional, 54"-wide textiles. 66"-wide textiles are needed for application on 60"-wide products. Additional yardage may be needed due to the unique characteristics of a textile.*
2. Obtain the COM ID# in Omni. If the color you are ordering does not have a COM ID# assigned, click "Create ID".
3. Enter your order on Order Manager in Omni.
4. Upon receipt of your purchase order, Herman Miller will send you a PO acknowledgment.
5. Arrangements must be made for the textiles to be shipped from the supplier to Herman Miller for application to the Herman Miller products. Textiles must be tagged with the assigned identification number and the roll yardage quantity. See Omni for shipping procedures and current shipping addresses or contact a COM representative at (616) 654 3400 or (866) 854 3048 ext 6543400.  
Products will be scheduled for production when COM textiles are received at Herman Miller. Standard lead times in effect at that time will apply.

*Note: If textiles are to be purchased directly by Herman Miller through the Supplier Connection program, Herman Miller will handle the ordering and shipping process and will schedule your order for production upon receipt of your purchase order (dependent on textile availability). Refer to the Supplier Connection program for more information.*

Supplier Connection

Program Overview

The Supplier Connection program is a service offered by Herman Miller to purchase approved COM textiles directly from Maharam, Camira, C.F. Stinson, Guilford of Maine, Luna Textiles, Momentum Textiles and Ultrafabrics. When you select a textile through this program, Herman Miller will facilitate the ordering, scheduling, and shipment of the textile directly with the supplier.

Suppliers included in the Supplier Connection program keep an active inventory of textiles that are pre-approved for application to Herman Miller products. Pre-approval applies only to the suitability of a textile for manufacturing and application to a Herman Miller product. Omni provides an overview of fabrics that have been tested and indicates whether or not they were approved for application to Herman Miller products.

Specific information on the terms and conditions, testing, approval, and ordering process for the Supplier Connection program is listed below. Questions and requests for assistance may be directed to your COM representative at:

(616) 654 3400  
(866) 854 3048 ext 6543400

Supplier Connection Warranty

Textiles purchased by Herman Miller through the Supplier Connection program are COM and are not warranted by Herman Miller. COM textiles are tested for application only; they are not tested for performance. The Herman Miller warranty does apply to the underlying products.

Suppliers of COM textiles are responsible for color consistency within commercial tolerances, UV stability, and resistance to soiling and perspiration.

Supplier Connection Pricing

Textiles purchased by Herman Miller through the Supplier Connection program are COM. COM is a Category 1 fabric. There are no application charges for COM fabrics.

Payment for textiles purchased by Herman Miller through the Supplier Connection program is the responsibility of the customer or dealer. Herman Miller will invoice the order at the suppliers prices published at the time of the order.



# Customer's Own Material Order Information — Workspaces

*continued*

## GSA

### Textile Approval

1. Select a COM textile and a Herman Miller product.
2. If your textile does not show as tested in Omni, submit a request.  
You will be required to select a specific color of the textile and feature of the product to test, i.e., seat, back, etc.
3. Herman Miller will notify you of approval or disapproval within 4 days from receipt of the test yardage.

### Ordering Products with Supplier Connection COM

1. Identify and include the following information on your purchase order:
  - Product number and option
  - Herman Miller's COM identification number
2. Enter your order on Order Manager in Omni.
3. Upon receipt of the purchase order, Herman Miller will process your order and send you a PO acknowledgment. Herman Miller will determine the yardage required to produce your product and will order and schedule for delivery the required textile. Standard lead times in effect at the time the textile is allocated at the supplier will apply to products ordered through this program.



# Textiles Application Chart — Workspaces

## GSA

- Available

[A] Assigned lead-time textile.

[A] Maharam textiles are on assigned lead times.

See following page for exception notes.

|                                    |   | Action Office® Panels/Connectors | Action Office B-Style Tackboards | Action Office/Ethospace E-Style Storage | Ethospace Tiles/Connectors | Ethospace/Canvas Office Landscape® Privacy Doors | Canvas Tiles/Extended Width Tiles/Channel Tiles | Canvas B-/E-Style Storage | Canvas Tackboards | Canvas Metal Desk Hutch Back Panel | Canvas Vista™ Movable Insert and Display Unit | OE1 Boundary Agile Wall Tile | OE1 Boundary Project Board and Screens | OE1 Nook Liner/Felt Screen Liner/Storage Trolley Liner | Overlay™ Performance Wall Cladding | Pari™ Screens/Flat Edge Screens/Channel Screens | Renew™ Link Screens | Exclave® Tackable Boards and Stowage Tackable Backdrop | Exclave Video-Friendly Tackable Boards and Stowage Tackable Backdrop | Personal Side Screen | Tu® Wood Storage Cubby Tackboard | Seating |    |
|------------------------------------|---|----------------------------------|----------------------------------|---|----------------------------|--|---|---------------------------|-------------------|------------------------------------|---|------------------------------|--|--|------------------------------------|---|---------------------|--|--|----------------------|----------------------------------|---------|----|
| Price Category 1                   |   |                                  |                                  |   |                            |  |   |                           |                   |                                    |   |                              |  |  |                                    |   |                     |  |  |                      |                                  |         |    |
| COM                                | Customer's Own Material <a href="#">A</a> | 1                                | 1                                | 1                                       | 1                          | 1  | 1   | 1                         | 1                 | 1                                  | 1   | 1                            | 1                                      | 1  | 1                                  | 1   | 1                   | 1  |  | 1                    | 1                                | 1       |    |
| 2V__                               | Chain                                     | •                                | •                                | •                                       | •                          | •  | 22  | •                         | •                 | •                                  | •   | •                            | •                                      | •  | •                                  | •   | •                   | •  |  |                      | •                                |         |    |
| 8T__                               | Crossing (85__)                           | 2                                | 2                                | •                                       | •                          | •  | •   | 2                         | •                 | •                                  | •   | •                            | •                                      | •  | •                                  | •   | •                   | •  | 8  |                      | •                                | 18      |    |
| 3DE__                              | Dex                                       | 6                                | 2                                | •                                       | •                          | •  | •   | 2                         | •                 | •                                  | •   | •                            | •                                      | •  | •                                  | •   | •                   | •  |  |                      | •                                |         |    |
| 2I__                               | Grasscloth                                | •                                | •                                | •                                       | •                          | •  | •   | •                         | •                 | •                                  | •   |                              | •                                      |  | •                                  | •   | •                   | •  |  |                      | •                                |         |    |
| 1MN__                              | Monologue                                 | 2                                | 2                                | •                                       | •                          | •  | •   | 2                         | •                 | •                                  | •   |                              | •                                      |  | •                                  | •   | •                   |  |  | •                    | •                                | •       |    |
| 5T__                               | Resonance                                 | •                                | •                                | •                                       | •                          | •  | •   | •                         | •                 | •                                  | •   |                              |  |  | •                                  |   |                     |  |  | •                    | •                                |         |    |
| 4SC__                              | Scatter                                   | 2                                | 2                                |   |                            |  | •   |                           | •                 | •                                  | •   | •                            | •                                      |  | •                                  | •   | •                   | •  |  |                      | •                                | •       | •  |
| 22F__                              | Slant                                     | 6                                | •                                |   | •                          | •  | •   |                           | •                 | •                                  | •   |                              |  |  | •                                  |   |                     |  |  |                      | •                                |         |    |
| 235__                              | Tailored                                  | •                                |                                  | •                                       | •                          | •  | 8   | •                         | •                 | •                                  | •   |                              |  |  | •                                  |   |                     |  |  |                      | •                                | •       |    |
| 1WS__                              | Whisper                                   | 2                                | 2                                | •                                       | •                          | •  | •   | 2                         | •                 | •                                  | •   | •                            | •                                      | •  | •                                  | •   | •                   | •  |  |                      | •                                | •       | •  |
| Price Category 2                   |   |                                  |                                  |   |                            |  |   |                           |                   |                                    |   |                              |  |  |                                    |   |                     |  |  |                      |                                  |         |    |
| 3AR__                              | Aristo                                    | 2                                | 2                                | •                                       | •                          | •  | •   | 2                         | •                 | •                                  | •   | •                            | •                                      | •  |                                    | •   | •                   | •  | •  |                      | •                                | •       | •  |
| 51__                               | Cord                                      | •                                | •                                | •                                       | •                          | •  | •   | •                         | •                 | •                                  | •   |                              |  |  | •                                  |   |                     |  |  |                      | •                                |         |    |
| 92__                               | Crepe                                     | 2                                | •                                | •                                       | •                          | •  | •   | •                         | •                 | •                                  | •   | •                            |  |  | •                                  | •   |                     | •  | 8  |                      | •                                | •       |    |
| 3EP__                              | Epic                                      | 2                                | 2                                | •                                       | •                          | •  | •   | 2                         | •                 | •                                  |   | •                            | •                                      |  | •                                  | •   | •                   | •  |  |                      | •                                | •       |    |
| 3DP__                              | Hint                                      | •                                | •                                | •                                       | •                          | •  | •   |                           | •                 | •                                  | •   | •                            |  |  | •                                  | •   | •                   | •  |  |                      | •                                | •       |    |
| 4N__                               | Horizon                                   | 2                                | 2                                | •                                       | •                          | •  | •   | •                         | •                 | •                                  | •   |                              |  |  | •                                  | •   |                     |  |  |                      | •                                | •       |    |
| 1HA__                              | Medley                                    | 2                                | 2                                | •                                       | •                          | •  | •   | •                         | •                 | •                                  | •   | •                            | •                                      | •  |                                    | •   | •                   | •  | •  | 8                    |                                  | •       |    |
| 4ME__                              | Mellow                                    | 2                                | 2                                | •                                       | •                          | •  | •   | 2                         | •                 | •                                  | •   | •                            | •                                      | •  |                                    | •   | •                   | •  | •  |                      | •                                | •       |    |
| ZMA__                              | Metaphor - Maharam <a href="#">A</a>      | 2                                | 2                                | 2                                       | 2                          | •  | •   | 2                         | •                 |                                    | •   |                              |  |  | •                                  | •   |                     | •  |  |                      |                                  |         |    |
| 811__                              | Muse - Maharam <a href="#">A</a>          | 2                                | 2                                | 2                                       | •                          |  | •   | 2                         | •                 |                                    | •   | •                            | •                                      |  | •                                  | •   | •                   | •  |  |                      | •                                |         |    |
| 3SL__                              | Sequel                                    |                                  |                                  | 2                                       |                            |  |   | 2                         |                   |                                    |   |                              |  |  |                                    |   |                     |  |  |                      |                                  | •       |    |
| 4TE__                              | Terra                                     | 2                                | 2                                | •                                       | •                          | •  | •   | 2                         | •                 | •                                  | •   | •                            | •                                      | •  |                                    | •   | •                   | •  |  |                      | •                                | •       |    |
| 3TW__                              | Twine                                     | •                                | •                                | •                                       | 21                         | •  | •   | •                         | •                 | •                                  | •   | •                            | •                                      | •  |                                    | •   | •                   | •  |  |                      | •                                | •       |    |
| 8R__                               | Twist (5S__)                              | 5                                | 2                                | •                                       | •                          | •  | •   | 2                         | •                 | •                                  | •   |                              | •                                      |  | •                                  | •   | •                   | •  |  |                      | •                                | •       | 18 |
| Price Category 3                   |   |                                  |                                  |   |                            |  |   |                           |                   |                                    |   |                              |  |  |                                    |   |                     |  |  |                      |                                  |         |    |
| 43Z__                              | Fractal                                   | •                                | •                                | •                                       | •                          | •  | •   | •                         | •                 | •                                  | •   | •                            | •                                      | •  |                                    | •   | •                   | •  | •  |                      | •                                | •       | •  |
| 47__                               | Ground Cloth®                             | •                                | •                                | •                                       | •                          | •  | •   | •                         | •                 | •                                  | •   | •                            | •                                      |  | •                                  | •   | •                   | •  | 8  |                      | •                                |         |    |
| ZM2__                              | Meld - Maharam <a href="#">A</a>          | 2                                | 2                                | •                                       | •                          | •  | •   | •                         | •                 | •                                  | •   | •                            | •                                      |  | •                                  | •   | •                   | •  |  |                      | •                                |         |    |
| 4GE__                              | Parcel                                    | •                                | •                                | •                                       | •                          | •  | •   | •                         | •                 | •                                  | •   | •                            | •                                      |  | •                                  | •   | •                   | •  |  |                      | •                                | •       |    |
| 8W__                               | Strands                                   | •                                | •                                | •                                       | •                          | •  | •   | •                         | •                 | •                                  |   |                              | •                                      |  | •                                  | •   | •                   |  |  |                      | •                                | •       |    |
| Price Category 4                   |   |                                  |                                  |   |                            |  |   |                           |                   |                                    |   |                              |  |  |                                    |   |                     |  |  |                      |                                  |         |    |
| No fabrics available at this time. |   |                                  |                                  |   |                            |  |   |                           |                   |                                    |   |                              |  |  |                                    |   |                     |  |  |                      |                                  |         |    |
| Price Category 5                   |   |                                  |                                  |   |                            |  |   |                           |                   |                                    |   |                              |  |  |                                    |   |                     |  |  |                      |                                  |         |    |
| 14A__                              | Hopsak                                    | 2                                | 2                                | •                                       | •                          |  | •   | 2                         | •                 | •                                  | •   | •                            |  |  | •                                  |   |                     | •  |  |                      | •                                | •       |    |
| 40G__                              | Method - Maharam <a href="#">A</a>        | 2                                | 2                                | 2                                       | 2                          | •  | •   | 2                         | •                 | •                                  | •   | •                            | •                                      |  | •                                  | •   | •                   | •  |  |                      | •                                |         |    |
| ZNC__                              | Nico - Maharam <a href="#">A</a>          | 2                                | 2                                | 2                                       | •                          | •  | •   | 2                         | •                 | •                                  | •   | •                            | •                                      |  | •                                  | •   | •                   | •  |  |                      | •                                |         |    |
| Price Category 6                   |   |                                  |                                  |   |                            |  |   |                           |                   |                                    |   |                              |  |  |                                    |   |                     |  |  |                      |                                  |         |    |
| No fabrics available at this time. |   |                                  |                                  |   |                            |  |   |                           |                   |                                    |   |                              |  |  |                                    |   |                     |  |  |                      |                                  |         |    |

Appendix: Textiles Application Chart — Workspaces

continued on next page

# Textiles Application Chart — Workspaces

GSA *continued*

- Available

[A] Assigned lead-time textile.

[A] Maharam textiles are on assigned lead times.

See following page for exception notes.

|                                    | Action Office® Panels/Connectors | Action Office B-Style Tackboards | Action Office/Ethospace E-Style Storage | Ethospace Tiles/Connectors | Ethospace/Canvas Office Landscape® Privacy Doors | Canvas Tiles/Extended Width Tiles/Channel Tiles | Canvas B-/E-Style Storage | Canvas Tackboards | Canvas Metal Desk Hutch Back Panel | Canvas Vista™ Movable Insert and Display Unit | OE1 Boundary Agile Wall Tile | OE1 Boundary Project Board and Screens | OE1 Nook Liner/Felt Screen Liner/Storage Trolley Liner | Overlay™ Performance Wall Cladding | Pari™ Screens/Flat Edge Screens/Channel Screens | Renew™ Link Screens | Exclave® Tackable Boards and Stowage Tackable Backdrop | Exclave Video-Friendly Tackable Boards and Stowage Tackable Backdrop | Personal Side Screen | Tu® Wood Storage Cubby Tackboard | Seating |
|------------------------------------|----------------------------------|----------------------------------|---|----------------------------|--|---|---------------------------|-------------------|------------------------------------|---|------------------------------|--|--|------------------------------------|---|---------------------|--|--|----------------------|----------------------------------|---------|
| <b>Price Category A</b>            |                                  |                                  |   |                            |  |   |                           |                   |                                    |   |                              |  |  |                                    |   |                     |  |  |                      |                                  |         |
| No fabrics available at this time. |                                  |                                  |   |                            |  |   |                           |                   |                                    |   |                              |  |  |                                    |   |                     |  |  |                      |                                  |         |
| <b>Price Category B</b>            |                                  |                                  |   |                            |  |   |                           |                   |                                    |   |                              |  |  |                                    |   |                     |  |  |                      |                                  |         |
| VM__ Medium - Maharam [A]          |                                  | 2                                |   |                            | •  | 20  | •                         | •                 | •                                  |   |                              |  |  | •                                  |   |                     |  |  |                      |                                  | •       |
| TL__ Messenger - Maharam [A] *     |                                  | 2                                | •                                       | 20                         | •  | 2   | •                         | •                 | •                                  |   |                              |  |  | •                                  | •   |                     |  |  |                      |                                  | •       |
| <b>Price Category C</b>            |                                  |                                  |   |                            |  |   |                           |                   |                                    |   |                              |  |  |                                    |   |                     |  |  |                      |                                  |         |
| Z27__ Manner - Maharam [A]         | 2                                | 2                                | 2                                       | •                          | •  | 2   | •                         | •                 | •                                  |   |                              |  |  | •                                  | •   |                     |  |  |                      |                                  |         |
| Z3__ Metric - Maharam [A]          | 2                                | 2                                |   |                            | •  | •   | •                         | •                 | •                                  |   |                              |  |  | •                                  | •   |                     |  |  |                      |                                  |         |
| <b>Price Category D</b>            |                                  |                                  |   |                            |  |   |                           |                   |                                    |   |                              |  |  |                                    |   |                     |  |  |                      |                                  |         |
| ZMD__ Mode - Maharam [A]           | 2                                |                                  |   |                            |  |   |                           |                   |                                    |   |                              |  |  |                                    |   |                     | •  |  |                      |                                  | •       |
| ZS3__ Spiral - Maharam [A]         | •                                | •                                | •                                       | •                          | •  | •   | •                         | •                 | •                                  |   |                              |  |  | •                                  |   |                     |  |  |                      |                                  |         |
| <b>Price Category E</b>            |                                  |                                  |   |                            |  |   |                           |                   |                                    |   |                              |  |  |                                    |   |                     |  |  |                      |                                  |         |
| TT__ Parallel - Maharam [A]        | 7                                | •                                |   | •                          | •  | •   | 17                        | •                 | •                                  | •   |                              |  |  | •                                  |   |                     |  |  |                      |                                  |         |
| <b>Price Category F</b>            |                                  |                                  |   |                            |  |   |                           |                   |                                    |   |                              |  |  |                                    |   |                     |  |  |                      |                                  |         |
| 8EX__ Emit - Maharam [A]           | 2                                | 2                                | 2                                       | •                          | •  | •   | 2                         | •                 | •                                  |   |                              |  |  |                                    |   |                     |  |  |                      |                                  |         |
| <b>Price Category G-K</b>          |                                  |                                  |   |                            |  |   |                           |                   |                                    |   |                              |  |  |                                    |   |                     |  |  |                      |                                  |         |
| No fabrics available at this time. |                                  |                                  |   |                            |  |   |                           |                   |                                    |   |                              |  |  |                                    |   |                     |  |  |                      |                                  |         |

\* Available in select colors on 20-day lead-time.

Refer to “Textile Colors” for 20-day colors.

- 1 Refer to price book appendices and Omni for COM information.
- 2 Available on all products except 54” and 60” wide.
- 3 Not available on AO partial-glazed panels.
- 4 Not available on Action Office (AO®) acoustical panels.
- 5 (8R\_\_ ), (8T\_\_ ), (85\_\_ ), and (5S\_\_ ) not available on AO acoustical panels and not available on 54”- or 60”-wide products.
- 6 Not available on Action Office (AO®) connectors, cable management, and spacers.
- 7 Not available on AO acoustical panels; not available on AO2 cable management panel face.
- 8 Available in select colors. See the “Textile Colors” appendix.
- 17 Not available on Canvas E-style flipper doors.
- 18 Available on seating products in select colors. See the “Textile Colors” appendix.
- 20 Not available on Ethospace tackable tiles.
- 21 Not available on Ethospace connectors and cable management tiles.
- 22 Not available as railroaded application option for Chain and Moire on Canvas extended width tiles.

Application Note: Herman Miller cannot guarantee material/pattern alignment in adjacent products. For example, a fabric’s pattern may not align from one screen to the next, or from one panel to the next.

# Textile Colors

## GSA

### Price Category 1

**Customer's Own Material**  
Ancillary/Seating/Workspaces  
See Order Information in  
Appendices.  
Assigned lead-time textile. A

**8Z Pellicle®**  
Seating  
For New Aeron® Chairs  
56% elastomeric  
44% polyester  
23101 Mineral  
23102 Carbon  
23103 Graphite

**AireWeave™ 2**  
Seating  
For Mirra® 2 Chairs  
67% elastomeric  
33% antimony-free polyester  
1A701 Alpine  
1A702 Slate Grey  
1A703 Graphite  
1A704 Lime Green  
1A706 Urban Orange  
1A708 Twilight

**Chain**  
Workspaces  
66" wide  
100% recycled polyester  
with 12% ocean bound plastic  
2V01 Pearl  
2V02 Oyster  
2V03 Wheat  
2V04 Linen  
2V05 Wicker  
2V06 Bamboo  
2V07 Sage  
2V08 Spring Wood  
2V09 Iceberg

**Crossing**  
Seating/Workspaces  
54" wide  
86% antimony-free polyester  
14% polyester  
8T03 Wicker \*  
8T04 Porcelain \*  
8T05 Warm Grey \*  
8T10 Tomato  
8T17 Cerulean  
8T18 Indigo  
8T19 Shale \*  
8T22 Tin \*  
8T23 Graphite  
8T24 Black

**Crossing**  
Workspaces  
For systems products only.  
54" wide  
86% antimony-free polyester  
14% polyester  
8501 Ivory \*  
8502 Oyster \*

\* Crossing colors available  
on Exclave® Video-friendly  
Tackable Boards and Stowage  
Tackable Backdrop

**Dex**  
Seating/Workspaces  
54" wide  
67% recycled polyester  
33% polyester  
3DE01 Frost  
3DE02 Silver Pine  
3DE03 Stone  
3DE04 Shale  
3DE05 Charcoal  
3DE06 Gossamer  
3DE07 Pine

**Duo**  
Seating  
For Lino™ Chairs  
52% polyester  
48% elastomeric  
4RM01 Mineral  
4RM02 Poppy  
4RM03 Green Leaf  
4RM04 Jade  
4RM05 Shadow  
4RM06 Graphite

**Flexnet™**  
Seating  
For Caper® Chairs  
69% elastomeric  
31% polyester  
6V01 Black  
6V02 Silver Grey

**Grasscloth**  
Workspaces  
66" wide  
100% recycled polyester  
with 11% ocean bound plastic  
2I01 Silver Birch  
2I02 Pampas  
2I03 Sedge  
2I07 Lea  
2I08 Taro  
2I09 Steam Grey  
2I13 Gravel

**Intercept**  
Seating  
For Cosm™ Chairs  
60% elastomeric  
40% polyester  
84501 Graphite  
84502 Carbon  
84503 Mineral  
84504 Nightfall  
84505 Glacier  
84506 Canyon

**Lyris 2™**  
Seating  
For Setu® Chairs  
74% elastomeric  
26% polyester  
4W21 Alpine  
4W23 Chartreuse  
4W25 Berry Blue  
4W26 Slate Grey  
4W28 Chino  
4W31 Graphite

**Monologue**  
Ancillary/Seating/Workspaces  
54" wide  
56% recycled polyester  
44% polyester  
1MN01 Linen  
1MN02 Alabaster  
1MN04 Folkstone  
1MN05 Silver Pine  
1MN06 Slate  
1MN07 Seed  
1MN09 Persimmon  
1MN11 Meadow  
1MN12 Blue Sky  
1MN13 Blue Spruce  
1MN14 Deep Sea

Price category 1 continued on  
next page

## GSA

*continued*

**Stretch Knit**

Seating

Assigned lead-time textile. A

Available only on Say!®

Suspension Back Work Chairs

97% polyester, 3% spandex

|       |             |
|-------|-------------|
| 3DK01 | Fog         |
| 3DK02 | Slate Grey  |
| 3DK03 | Java        |
| 3DK04 | Black       |
| 3DK05 | Red         |
| 3DK06 | Green Apple |
| 3DK07 | Berry Blue  |

HermanMiller

# Textile Colors

continued

GSA

## Price Category 1

continued

### Tailored

Ancillary/Seating/Workspaces  
54" wide

56% polyester

44% recycled polyester

23501 Studio White \* \*\*

23502 Sugar \*\*

23503 Tomato

23506 Chive

23508 Cobalt

23509 Cadet

23510 Fog

23511 Graphite

23512 Black

23513 Coffee

\* Color not available on Canvas Tiles.

\*\* Colors not available on Plex™ Lounge Furniture.

### Tuck 3D Knit

Seating

Available only on Fuld Nesting Chairs.

knit to size

56% polyester

44% recycled polyester

9NK01 Alpine

9NK02 Carbon

9NK03 Nightfall

9NK04 Olive

9NK05 Cocoa

9NK06 Canyon

### Whisper

Ancillary/Seating/Workspaces  
54" wide

73% recycled polyester

27% polyester,  
with 11.3% ocean bound plastic

1WS01 Sand Dollar

1WS02 Pebble

1WS03 Silver Birch

1WS04 Iceberg

1WS05 Silver Pine

1WS06 Carbon

1WS07 Cumin

1WS12 Willow

1WS13 Sea Grass

1WS14 Pool

1WS15 Blueberry

1WS16 Glacier

1WS17 Grey

1WS18 Canyon

## Price Category 2

### Aristo

Seating/Workspaces

54" wide

88% recycled polyester

12% polyester

Acrylic backing

3AR01 Forest Moss

3AR02 Light Brindle

3AR03 Mink

3AR04 Copper

3AR06 Cherry

3AR08 Green Apple

3AR10 Waterfall

3AR11 Cadet

3AR12 Tin

3AR13 Pewter

3AR14 Grey Brindle

3AR15 Grey Black

### Cord

Workspaces

66" wide

51% antimony-free polyester

49% polyester

5101 Ivory

5102 White Ash

5103 Linen

5104 Bamboo

5105 Sepia

5107 Sesame

5109 Bayou

5111 Spring Wood

5112 Summer White

### Crepe

Ancillary/Seating/Workspaces

54" wide

100% recycled polyester,

with 43.6% ocean bound plastic

9201 Licorice

9203 Smoke

9207 Cherry

9223 Cadet

9241 Beachglass

9249 Stone \*

9251 Fog \*

9252 Slate Grey

9261 Shale

9262 Graphite

9265 Mineral

9266 Persimmon

9267 Juniper

9268 Glacier

9269 Cascade

9270 Navy

\* Colors available on Exclave®

Video-friendly Tackable Boards and Stowage Tackable Backdrop

### Epic

Seating/Workspaces

54" wide

56% recycled polyester

44% polyester

Acrylic backing

3EP01 Alabaster

3EP02 Smoke

3EP03 Falcon

3EP05 Copper

3EP06 Urban Orange

3EP07 Poppy

3EP10 Clover

3EP11 Loden

3EP14 Peacock

3EP15 Cadet

3EP16 Indigo

3EP17 Spring Wood

3EP18 Grey Brindle

3EP19 Seed

3EP20 Carbon Dark

Price category 2 continued on next page

Textile Colors

continued

GSA

Price Category 2

continued

Appendix: Textile Colors

| Hint                        |
|-----------------------------|
| Seating/Workspaces          |
| 54" wide                    |
| 76% recycled polyester      |
| 24% polyester               |
| 3DP01 Sediment              |
| 3DP02 Gunmetal              |
| 3DP03 Silt                  |
| 3DP04 Porcelain             |
| 3DP05 Indigo                |
| 3DP06 Fern                  |
| 3DP07 Adobe                 |
| 3DP08 Red Sea               |
| Horizon                     |
| Workspaces                  |
| 54" wide                    |
| 65% antimony-free polyester |
| 35% polyester               |
| 4N01 Rye Grass              |
| 4N02 Sugar Pine             |
| 4N03 Silver Pine            |
| 4N04 White Ash              |
| 4N05 Spring Wood            |
| 4N08 Haystack               |
| 4N09 Oat Grass              |
| 4N13 Pine Cone              |
| 4N15 Elderberry             |
| Marvel                      |
| Seating                     |
| 54" wide                    |
| 100% pvc-free polyurethane  |
| 1MV01 Summer White          |
| 1MV02 Sand Dollar           |
| 1MV03 Espresso              |
| 1MV04 Folkstone Grey        |
| 1MV05 Graphite              |
| 1MV06 Onyx                  |
| 1MV07 Polar Blue            |
| 1MV08 Blush Grey            |
| 1MV12 Red                   |
| 1MV14 Pine                  |
| 1MV15 Teal Green            |
| 1MV16 Twilight              |

| Medley                         |
|--------------------------------|
| Ancillary/Seating/Workspaces   |
| 54" wide                       |
| 50% recycled polyester         |
| 50% polyester                  |
| 1HA01 Stone *                  |
| 1HA02 Trail                    |
| 1HA03 Charcoal                 |
| 1HA04 Cinder                   |
| 1HA06 Papaya                   |
| 1HA07 Chutney                  |
| 1HA09 Feather Grey *           |
| 1HA11 Loden                    |
| 1HA13 Bayou *                  |
| 1HA14 Blue Grotto              |
| 1HA15 Blueberry                |
| 1HA22 Khaki                    |
| 1HA23 Pewter                   |
| 1HA24 Yellow Oxide             |
| 1HA25 Vintage Rose             |
| 1HA26 Raspberry                |
| 1HA27 Acai Berry               |
| * Colors available on Exclave® |
| Video-friendly Tackable Boards |
| and Stowage Tackable Backdrop  |
| Mellow                         |
| Seating/Workspaces             |
| 54" wide                       |
| 100% recycled polyester,       |
| with 16% ocean bound plastic   |
| 4ME01 Mineral                  |
| 4ME04 Olive                    |
| 4ME05 Glacier                  |
| 4ME06 Oceanside                |
| 4ME07 Charcoal                 |

| Metaphor – Maharam            |
|-------------------------------|
| Ancillary/Seating/Workspaces  |
| 54" wide                      |
| 100% polyester                |
| Acrylic backing               |
| ZMA01/466553-001 Afterfeather |
| ZMA02/466553-002 Moonflower   |
| ZMA03/466553-003 Handcraft    |
| ZMA04/466553-004 Crossroad    |
| ZMA05/466553-005 Chondrite    |
| ZMA06/466553-006 Detective    |
| ZMA07/466553-007 Steamship    |
| ZMA08/466553-008 Electricity  |
| ZMA09/466553-009 Takeoff      |
| ZMA10/466553-010 Parachute    |
| ZMA11/466553-011 Blueshift    |
| ZMA12/466553-012 Dockyard     |
| ZMA13/466553-013 Bathe        |
| ZMA14/466553-014 Icebound     |
| ZMA15/466553-015 Thermosphere |
| ZMA16/466553-016 Aboard       |
| ZMA17/466553-017 Agateware    |
| ZMA18/466553-018 Homeland     |
| ZMA19/466553-019 Rockfall     |
| ZMA20/466553-020 Undergrowth  |
| ZMA21/466553-021 Gremolata    |
| ZMA22/466553-022 Patina       |
| ZMA23/466553-023 Sylvan       |
| ZMA24/466553-024 Outfield     |
| ZMA25/466553-025 Windbreak    |
| ZMA26/466553-026 Saguaro      |
| ZMA27/466553-027 Barnwood     |
| ZMA28/466553-028 Cookshop     |
| ZMA29/466553-029 Amandine     |
| ZMA30/466553-030 Bodhran      |
| ZMA31/466553-031 Centerstage  |
| ZMA32/466553-032 Focaccia     |
| ZMA33/466553-033 Bumblebee    |
| ZMA34/466553-034 Microbrew    |
| ZMA35/466553-035 Sauna        |
| ZMA36/466553-036 Gazebo       |
| ZMA37/466553-037 Pirouette    |
| ZMA38/466553-038 Heartbeat    |
| ZMA39/466553-039 Shino        |
| ZMA40/466553-040 Sunrise      |

| Metaphor continued                    |
|---------------------------------------|
| ZMA41/466553-041 Florist              |
| ZMA42/466553-042 Beadwork             |
| ZMA43/466553-043 Framboise            |
| ZMA44/466553-044 Wisteria             |
| ZMA45/466553-045 Warrior              |
| Muse – Maharam                        |
| Ancillary/Seating/Workspaces          |
| 54" wide                              |
| 100% post-consumer recycled polyester |
| 8I101/466487-001 Crescendo            |
| 8I102/466487-002 Resonate             |
| 8I103/466487-003 Runway               |
| 8I104/466487-004 Ascend               |
| 8I105/466487-005 Veil                 |
| 8I106/466487-006 Refresh              |
| 8I107/466487-007 Clear                |
| 8I108/466487-008 Fantasy              |
| 8I109/466487-009 Miso                 |
| 8I110/466487-010 Compass              |
| 8I111/466487-011 Bergamot             |
| 8I112/466487-012 Grasshopper          |
| 8I113/466487-013 Goal                 |
| 8I114/466487-014 Mistletoe            |
| 8I115/466487-015 Seaglass             |
| 8I116/466487-016 Frigid               |
| 8I117/466487-017 Riverbend            |
| 8I118/466487-018 Noble                |
| 8I119/466487-019 Pulsar               |
| 8I120/466487-020 Velella              |
| 8I121/466487-021 Sailboat             |
| 8I122/466487-022 Sparse               |
| 8I123/466487-023 Vase                 |
| 8I124/466487-024 Haven                |
| 8I125/466487-025 Mead                 |
| 8I126/466487-026 Neat                 |
| 8I127/466487-027 Jovial               |
| 8I128/466487-028 Theater              |
| 8I129/466487-029 Poinsettia           |
| 8I130/466487-030 Celebrate            |
| 8I131/466487-031 Spectacle            |

Price category 2 continued on next page



# Textile Colors

continued

## GSA

### Price Category 2

continued

| Rhythm         |             |
|----------------|-------------|
| Seating        |             |
| 54" wide       |             |
| 100% polyester |             |
| 3002           | Green Apple |
| 3004           | Bayou       |
| 3005           | Berry Blue  |
| 3006           | Iris        |
| 3007           | Twilight    |
| 3009           | Poppy       |
| 3010           | Molasses    |
| 3012           | Khaki       |
| 3013           | Mink        |
| 3014           | Black *     |
| 3015           | Charcoal *  |

\* Colors available on Embody® Chair

| Sequel                       |             |
|------------------------------|-------------|
| Ancillary/Seating/Workspaces |             |
| 54" wide                     |             |
| 100% vinyl                   |             |
| 100% polyester knit backing  |             |
| Resilience® finish           |             |
| 3SL01                        | White       |
| 3SL02                        | Pebble      |
| 3SL03                        | Mushroom    |
| 3SL04                        | Stone       |
| 3SL09                        | Seal        |
| 3SL10                        | Blue Fog    |
| 3SL11                        | Folkstone   |
| 3SL12                        | Shale       |
| 3SL13                        | Slate Grey  |
| 3SL14                        | Charcoal    |
| 3SL15                        | Carbon Dark |
| 3SL28                        | Navy *      |

\* Color available on Eames® Tandem Sling Seating

| Terra  |             |
|--|-------------|
| Ancillary/Seating/Workspaces   |             |
| 54" wide   |             |
| 100% post-consumer recycled biodegradable polyester *  |             |
| 4TE01  | Spring Wood |
| 4TE02  | Zinc        |
| 4TE03  | Pine Cone   |
| 4TE04  | Charcoal    |
| * 1% biodegradation in 1,278 days under ASTM D5511 conditions. No evidence of further degradation. |             |

| Twine                   |              |
|-------------------------|--------------|
| Workspaces              |              |
| 66" wide                |              |
| 100% recycled polyester |              |
| 3TW01                   | Silver Birch |
| 3TW02                   | Ivory        |
| 3TW03                   | Alabaster    |
| 3TW04                   | Bamboo       |
| 3TW05                   | Iceberg      |
| 3TW06                   | Charcoal     |
| 3TW07                   | Feather Grey |
| 3TW08                   | Shale        |

| Twist                        |               |
|------------------------------|---------------|
| Ancillary/Seating/Workspaces |               |
| 54" wide                     |               |
| 80% antimony-free polyester  |               |
| 13% recycled polyester       |               |
| 7% polyester                 |               |
| 8R05                         | Wicker        |
| 8R10                         | Poppy         |
| 8R14                         | Tin           |
| 8R15                         | Shale         |
| 8R16                         | Graphite      |
| 8R17                         | Birch         |
| 8R18                         | Sepia         |
| 8R22                         | Blueberry     |
| 8R23                         | Green Apple   |
| 8R26                         | Gunmetal      |
| 8R27                         | Cinder        |
| 8R29                         | Pekoe         |
| 8R33                         | Forest        |
| 8R35                         | Waterfall     |
| 8R36                         | Midnight Blue |
| 8R37                         | Carbon Dark   |

| Twist                       |        |
|-----------------------------|--------|
| Workspaces                  |        |
| For systems products only.  |        |
| 54" wide                    |        |
| 80% antimony-free polyester |        |
| 13% recycled polyester      |        |
| 7% polyester                |        |
| 5S03                        | Oyster |

### Price Category 3

| Ace                    |              |
|------------------------|--------------|
| Ancillary/Seating      |              |
| 54" wide               |              |
| 100% polyurethane      |              |
| Polyester knit backing |              |
| Stain resistant finish |              |
| 3AC01                  | Summer White |
| 3AC02                  | White Ash    |
| 3AC04                  | Metal        |
| 3AC05                  | Clay         |
| 3AC06                  | Chestnut     |
| 3AC08                  | Camelback    |
| 3AC09                  | Chipotle     |
| 3AC12                  | Artichoke    |
| 3AC13                  | Sepia Dark   |
| 3AC14                  | Aloe         |
| 3AC17                  | Oceanside    |
| 3AC18                  | Midnight     |
| 3AC20                  | Frost        |
| 3AC21                  | Lead         |
| 3AC22                  | Black        |

| Fractal                      |              |
|------------------------------|--------------|
| Ancillary/Seating/Workspaces |              |
| 58" wide                     |              |
| 84% recycled polyester       |              |
| 16% polyester                |              |
| 43Z01                        | Granite      |
| 43Z02                        | Golden Olive |
| 43Z03                        | Verdant      |
| 43Z04                        | Cadet        |

Price category 3 continued on next page

# Textile Colors

continued

GSA

## Price Category 3

continued

| Ground Cloth®  |               |
|----------------|---------------|
| Workspaces     |               |
| 66" wide       |               |
| 100% polyester |               |
| 4701           | Vapor Grey    |
| 4721           | Warm White *  |
| 4722           | Fog *         |
| 4723           | Straw *       |
| 4724           | Red Orange *  |
| 4726           | Green Apple * |
| 4727           | Caribbean *   |
| 4728           | Midnight *    |
| 4729           | Cappuccino *  |

\* Colors available on Exclave®  
Video-friendly Tackable Boards  
and Stowage Tackable Backdrop

| Latitude                  |              |
|---------------------------|--------------|
| Seating                   |              |
| Colors for Mirra 2 Chairs |              |
| 100% polyester            |              |
| 8M10                      | Alpine       |
| 8M17                      | Black        |
| 8M23                      | French Press |
| 8M27                      | Cordovan     |
| 8M28                      | Ochre        |
| 8M29                      | Ultramarine  |
| 8M30                      | Olive        |

| Meld - Maharam                       |           |
|--------------------------------------|-----------|
| Seating/Workspaces                   |           |
| Workspaces                           |           |
| 54" wide                             |           |
| 68% post-consumer recycled polyester |           |
| 32% polyester                        |           |
| PFOA-Free stain resistant            |           |
| ZM201/466387-201                     | Vast      |
| ZM202/466387-202                     | Panda **  |
| ZM203/466387-203                     | Skyline * |
| ZM204/466387-204                     | Knight ** |
| ZM205/466387-205                     | Quill **  |
| ZM206/466387-206                     | Pipe      |
| ZM207/466387-207                     | Grate *   |
| ZM208/466387-208                     | Gloss     |
| ZM209/466387-209                     | Bulb      |

| Meld continued   |             |
|------------------|-------------|
| ZM210/466387-210 | Bride       |
| ZM211/466387-211 | Stark       |
| ZM212/466387-212 | Seashell    |
| ZM213/466387-213 | Antler      |
| ZM214/466387-214 | Crater *    |
| ZM215/466387-215 | Perennial   |
| ZM216/466387-216 | Mulberry    |
| ZM217/466387-217 | Fuchsia *   |
| ZM218/466387-218 | Amethyst *  |
| ZM219/466387-219 | Merlot      |
| ZM220/466387-220 | Magma *     |
| ZM221/466387-221 | Rooster     |
| ZM222/466387-222 | Heat *      |
| ZM223/466387-223 | Clementine  |
| ZM224/466387-224 | Fox         |
| ZM225/466387-225 | Kiss *      |
| ZM226/466387-226 | Bare        |
| ZM227/466387-227 | Blonde      |
| ZM228/466387-228 | Mimosa      |
| ZM229/466387-229 | Comet *     |
| ZM230/466387-230 | Honeydew    |
| ZM231/466387-231 | Wild *      |
| ZM232/466387-232 | Vine        |
| ZM233/466387-233 | Seed        |
| ZM234/466387-234 | Kale *      |
| ZM235/466387-235 | Waterfall * |
| ZM236/466387-236 | Nordic *    |
| ZM237/466387-237 | Reef *      |
| ZM238/466387-238 | Wave        |
| ZM239/466387-239 | Isle **     |
| ZM240/466387-240 | Creek       |
| ZM241/466387-241 | Mariner *   |
| ZM242/466387-242 | Globe       |
| ZM243/466387-243 | Spa         |

\* Colors available on  
20-day lead time.  
\*\* Colors available on  
10-day lead time.

| Parcel                       |              |
|------------------------------|--------------|
| Ancillary/Seating/Workspaces |              |
| 54" wide                     |              |
| 100% recycled polyester      |              |
| 4GE01                        | Gunmetal     |
| 4GE02                        | Brindle      |
| 4GE03                        | Bayou        |
| 4GE04                        | Pesto        |
| 4GE05                        | Golden Olive |
| 4GE06                        | Copper Sea   |

| Saille - Geiger Textile          |               |
|----------------------------------|---------------|
| Ancillary                        |               |
| 57" wide                         |               |
| 69% cotton                       |               |
| 31% polyester                    |               |
| PFOA-Free stain resistant finish |               |
| Acrylic backing                  |               |
| 18001                            | Coal          |
| 18002                            | Shale         |
| 18003                            | Haze          |
| 18004                            | Stone         |
| 18005                            | White *       |
| 18006                            | Beach         |
| 18007                            | Sand          |
| 18008                            | Blush         |
| 18009                            | Brick         |
| 18010                            | Fog           |
| 18011                            | Celadon       |
| 18012                            | Poolside      |
| 18013                            | Summer Sky    |
| 18014                            | Lake          |
| 18015                            | Midnight Blue |

\* Color not available on Eames®  
Soft Pad Group Chairs/Ottomans.

| Strands                 |           |
|-------------------------|-----------|
| Workspaces              |           |
| 66" wide                |           |
| 100% recycled polyester |           |
| 8W01                    | Pebble    |
| 8W02                    | Porcelain |
| 8W04                    | Honey     |
| 8W05                    | Khaki     |
| 8W06                    | Rye       |
| 8W07                    | Wicker    |
| 8W08                    | Tin       |
| 8W09                    | Cool Grey |

# Textile Colors

continued

GSA

## Price Category 4

| Cygnus                           |        |
|----------------------------------|--------|
| Ancillary                        |        |
| For Eames® Aluminum Group Chairs |        |
| 69% elastomeric                  |        |
| 31% polyester                    |        |
| 5401                             | Black  |
| 5402                             | Zinc   |
| 5403                             | Quartz |

| Daydream               |              |
|------------------------|--------------|
| Ancillary/Seating      |              |
| 54" wide               |              |
| 48% wool               |              |
| 41% recycled polyester |              |
| 9% nylon               |              |
| 2% polyester           |              |
| 3DM01                  | Rye Grass    |
| 3DM02                  | Silver Birch |
| 3DM03                  | Pewter       |
| 3DM04                  | Graphite     |
| 3DM05                  | Black        |
| 3DM06                  | Lemongrass   |
| 3DM07                  | Permission   |
| 3DM08                  | Juniper      |
| 3DM09                  | Sea Grass    |
| 3DM10                  | Nightfall    |

| Kalista - Geiger Textile               |              |
|--|--------------|
| Ancillary                              |              |
| 54" wide                               |              |
| 71% post-industrial recycled cotton    |              |
| 18% post-industrial recycled polyester |              |
| 11% polyester                          |              |
| PFOA-Free stain resistant finish       |              |
| 1AL01                                  | Cotton       |
| 1AL02                                  | Natural      |
| 1AL03                                  | Titanium     |
| 1AL04                                  | Pewter       |
| 1AL05                                  | Starry Night |
| 1AL06                                  | Red Hot      |
| 1AL07                                  | Sun Kissed   |
| 1AL08                                  | Dune         |
| 1AL09                                  | Beach Glass  |
| 1AL10                                  | Bluestone    |
| 1AL11                                  | Seaside      |
| 1AL12                                  | Night Sky    |

| Lariat – Maharam  |           |
|-------------------|-----------|
| Ancillary/Seating |           |
| 54" wide          |           |
| 100% vinyl        |           |
| ZLR01/440401-001  | 001       |
| ZLR02/440401-002  | 002       |
| ZLR04/440401-004  | 004       |
| ZLR06/440401-006  | 006       |
| ZLR07/440401-007  | 007       |
| ZLR08/440401-008  | 008       |
| ZLR10/440401-010  | 010       |
| ZLR11/440401-011  | 011       |
| ZLR13/440401-013  | 013       |
| ZLR14/440401-014  | 014       |
| ZLR15/440401-015  | 015       |
| ZLR16/440401-016  | 016       |
| ZLR18/440401-018  | 018       |
| ZLR20/440401-020  | 020       |
| ZLR21/440401-021  | 021       |
| ZLR24/440401-024  | 024       |
| ZLR25/440401-025  | 025       |
| ZLR26/440401-026  | 026       |
| ZLR28/440401-028  | 028       |
| ZLR31/440401-031  | 031       |
| ZLR32/440401-032  | 032       |
| ZLR33/440401-033  | 033       |
| ZLR34/440401-034  | 034       |
| ZLR38/440401-038  | 038       |
| ZLR39/440401-039  | Granite   |
| ZLR40/440401-040  | Linen     |
| ZLR41/440401-041  | Stella    |
| ZLR42/440401-042  | Saddle    |
| ZLR43/440401-043  | Holly     |
| ZLR44/440401-044  | Maroon    |
| ZLR45/440401-045  | Siren     |
| ZLR46/440401-046  | Reseda    |
| ZLR47/440401-047  | Purslane  |
| ZLR48/440401-048  | Spire     |
| ZLR49/440401-049  | Papyrus   |
| ZLR50/440401-050  | Chickadee |
| ZLR51/440401-051  | Requiem   |

| Sync              |              |
|-------------------|--------------|
| Ancillary/Seating |              |
| 55" wide          |              |
| 100% polyester    |              |
| 3SY01             | Pine Cone    |
| 3SY03             | Canyon       |
| 3SY04             | Truffle      |
| 3SY06             | Everglade    |
| 3SY08             | Nightfall    |
| 3SY09             | Dark Mineral |
| 3SY10             | Slate Grey   |
| 3SY11             | Dark Carbon  |
| 3SY12             | Black        |

## Price Category 5

| Arlo - Maharam    |          |
|-------------------|----------|
| Ancillary/Seating |          |
| 70% wool          |          |
| 30% polyester     |          |
| 5YT01             | Turn     |
| 5YT02             | Embers   |
| 5YT03             | Parallel |
| 5YT04             | Octave   |
| 5YT05             | Musing   |
| 5YT06             | Summon   |
| 5YT07             | Dynamic  |
| 5YT08             | Signals  |
| 5YT09             | Aspect   |
| 5YT10             | Dedicate |
| 5YT11             | Juniper  |
| 5YT12             | Cilantro |
| 5YT13             | Hawthorn |
| 5YT14             | Thread   |
| 5YT15             | Spalted  |
| 5YT16             | Warmer   |
| 5YT17             | Misted   |
| 5YT18             | Share    |
| 5YT19             | Chord    |
| 5YT20             | Heroic   |
| 5YT21             | Arpeggio |
| 5YT22             | Roots    |
| 5YT23             | Sumac    |
| 5YT24             | Purl     |
| 5YT25             | Homeward |

| Cozy              |                     |
|-------------------|---------------------|
| Ancillary/Seating |                     |
| 54" wide          |                     |
| 100% wool         |                     |
| 3CY01             | Heathered Warm Grey |
| 3CY02             | Heathered Rye Grass |
| 3CY03             | Heathered Cool Grey |
| 3CY05             | Heathered Black     |
| 3CY06             | Heathered Persimmon |
| 3CY07             | Heathered Loden     |
| 3CY09             | Heathered Lagoon    |
| 3CY10             | Heathered Twilight  |

Price category 5 continued on next page

# Textile Colors

continued

## GSA

### Price Category 5

continued

| Hopsak                       |                   |
|------------------------------|-------------------|
| Ancillary/Seating/Workspaces |                   |
| 56" wide                     |                   |
| 100% recycled polyester      |                   |
| 14A20                        | Black             |
| 14A22                        | Raw Umber Dark    |
| 14A26                        | Grey Blue Dark    |
| 14A30                        | Sepia Dark        |
| 14A38                        | Emerald Dark      |
| 14A39                        | Yellow Dark       |
| 14A40                        | Orange            |
| 14A41                        | Sienna            |
| 14A42                        | Olive Green Dark  |
| 14A43                        | Crimson           |
| 14A44                        | Crimson Dark Dark |
| 14A45                        | Violet Dark       |
| 14A46                        | Pink Dark Dark    |
| 14A47                        | Ultramarine Dark  |
| 14A48                        | Cobalt Blue       |
| 14A49                        | Terra Cotta       |
| 14A50                        | Ochre Dark        |

| Ingenuie - Geiger Textile        |            |
|----------------------------------|------------|
| Ancillary                        |            |
| 54" wide                         |            |
| 28% wool                         |            |
| 26% viscose                      |            |
| 25% acrylic                      |            |
| 16% polyester                    |            |
| 5% cotton                        |            |
| PFOA-Free stain resistant finish |            |
| 1GH01                            | Sand       |
| 1GH02                            | Fog        |
| 1GH03                            | Flannel    |
| 1GH04                            | Trench     |
| 1GH05                            | Vermillion |
| 1GH06                            | Adriatic   |
| 1GH07                            | Umber      |
| 1GH08                            | Charcoal   |

| Method – Maharam             |            |
|------------------------------|------------|
| Seating/Workspaces           |            |
| 54" wide                     |            |
| 100% recycled polyester      |            |
| with 12% ocean-bound plastic |            |
| 40G01/466579-001             | Inspire    |
| 40G02/466579-002             | Rhea       |
| 40G03/466579-003             | Noise      |
| 40G04/466579-004             | Speedway   |
| 40G05/466579-005             | Villanelle |
| 40G06/466579-006             | Maestro    |
| 40G07/466579-007             | Destiny    |
| 40G08/466579-008             | Possess    |
| 40G09/466579-009             | Waterside  |
| 40G10/466579-010             | Relax      |
| 40G11/466579-011             | Delightful |
| 40G12/466579-012             | Parrotlet  |
| 40G13/466579-013             | Verdurous  |
| 40G14/466579-014             | Bosky      |
| 40G15/466579-015             | Acreage    |
| 40G16/466579-016             | Allude     |
| 40G17/466579-017             | Tweed      |
| 40G18/466579-018             | Korma      |
| 40G19/466579-019             | Fossilize  |
| 40G20/466579-020             | Cattail    |
| 40G21/466579-021             | Shortcake  |
| 40G22/466579-022             | Racecar    |
| 40G23/466579-023             | Courtship  |
| 40G24/466579-024             | Jam        |
| 40G25/466579-025             | Sparrow    |

| Nico - Maharam               |            |
|------------------------------|------------|
| Ancillary/Seating/Workspaces |            |
| 54" wide                     |            |
| 63% wool                     |            |
| 21% polyester                |            |
| 16% solution-dyed nylon      |            |
| ZNC01/466564-001             | Alcazar    |
| ZNC02/466564-002             | Ironclad   |
| ZNC03/466564-003             | Tune       |
| ZNC04/466564-004             | Bridegroom |
| ZNC05/466564-005             | Diode      |
| ZNC06/466564-006             | Jest       |

| Nico continued   |            |
|------------------|------------|
| ZNC07/466564-007 | Sanctuary  |
| ZNC08/466564-008 | Aquarius   |
| ZNC09/466564-009 | Houseboat  |
| ZNC10/466564-010 | Olympian   |
| ZNC11/466564-011 | Tennis     |
| ZNC12/466564-012 | Dressage   |
| ZNC13/466564-013 | Zing       |
| ZNC14/466564-014 | Bitterroot |
| ZNC15/466564-015 | Gemini     |
| ZNC16/466564-016 | Posh       |
| ZNC17/466564-017 | Sizzle     |
| ZNC18/466564-018 | Cheerful   |
| ZNC19/466564-019 | Watermelon |
| ZNC20/466564-020 | Toucan     |
| ZNC21/466564-021 | Rosin      |
| ZNC22/466564-022 | Jousting   |
| ZNC23/466564-023 | Jojoba     |
| ZNC24/466564-024 | Dromedary  |
| ZNC25/466564-025 | Toasty     |
| ZNC26/466564-026 | Casaba     |
| ZNC27/466564-027 | Greenhouse |
| ZNC28/466564-028 | Sibyl      |
| ZNC29/466564-029 | Spearmint  |
| ZNC30/466564-030 | Pothos     |
| ZNC31/466564-031 | Calathea   |
| ZNC32/466564-032 | Landscape  |
| ZNC33/466564-033 | Espalier   |
| ZNC34/466564-034 | Gecko      |
| ZNC35/466564-035 | Meditation |

| Summit                 |            |
|------------------------|------------|
| Ancillary/Seating      |            |
| 54" wide               |            |
| 100% silicone          |            |
| Polyester knit backing |            |
| 3SU02                  | Oyster     |
| 3SU03                  | Zinc       |
| 3SU04                  | Sparrow    |
| 3SU07                  | Black      |
| 3SU09                  | Beachglass |
| 3SU10                  | Midnight   |

| Vionette - Geiger Textile |                   |
|---------------------------|-------------------|
| Ancillary                 |                   |
| 55" wide                  |                   |
| 100% polyester            |                   |
| 1GJ01                     | White Sand Mix    |
| 1GJ02                     | Desert Mix        |
| 1GJ03                     | Light Gray Mix    |
| 1GJ04                     | Pewter Mix        |
| 1GJ05                     | Cobalt Mix        |
| 1GJ06                     | Prussian Blue Mix |
| 1GJ07                     | Chocolate Mix     |
| 1GJ08                     | Champagne         |
| 1GJ09                     | Morning Sky       |
| 1GJ10                     | Aquatic           |
| 1GJ11                     | Sapphire          |
| 1GJ12                     | Midnight Blue     |
| 1GJ13                     | Shadow            |
| 1GJ14                     | Java              |
| 1GJ15                     | Carbon            |
| 1GJ16                     | Black             |
| 1GJ17                     | Claret            |
| 1GJ18                     | Poppy             |

# Textile Colors

continued

GSA

## Price Category 6

| Balance            |        |
|--------------------|--------|
| Seating            |        |
| For Embody® chairs |        |
| 100% polyester     |        |
| 3512               | Carbon |
| 3513               | Black  |

| Outdoor Weave             |          |
|---------------------------|----------|
| Ancillary                 |          |
| For Eames® Aluminum Group |          |
| Outdoor Chairs            |          |
| 50% elastomeric           |          |
| 50% polypropylene         |          |
| 7203                      | Lead     |
| 7205                      | Graphite |

## Price Category 7

| Customer's Own Leather         |  |
|--------------------------------|--|
| Seating/Ancillary              |  |
| See Order Information in       |  |
| Appendices. Assigned lead-time |  |
| textile. <a href="#">A</a>     |  |

| Beck – Maharam    |             |
|-------------------|-------------|
| Ancillary/Seating |             |
| 55" wide          |             |
| 78% wool          |             |
| 22% nylon         |             |
| ZB301/466571-001  | Overshadow  |
| ZB302/466571-002  | Molecule    |
| ZB303/466571-003  | Zeitgeist   |
| ZB304/466571-004  | Blacksmith  |
| ZB305/466571-005  | Cornerstone |
| ZB306/466571-006  | Chainmail   |
| ZB307/466571-007  | Buckram     |
| ZB308/466571-008  | Callisto    |
| ZB309/466571-009  | Interlude   |
| ZB310/466571-010  | Letterpress |
| ZB311/466571-011  | Memoir      |
| ZB312/466571-012  | Litmus      |
| ZB313/466571-013  | Stoic       |
| ZB314/466571-014  | Inkpad      |
| ZB315/466571-015  | Praxis      |
| ZB316/466571-016  | Astute      |
| ZB317/466571-017  | Percolate   |
| ZB318/466571-018  | Halocline   |
| ZB319/466571-019  | Semblance   |
| ZB320/466571-020  | Loch        |
| ZB321/466571-021  | Lido        |
| ZB322/466571-022  | Underwater  |
| ZB323/466571-023  | Tetrapod    |
| ZB324/466571-024  | Nymph       |
| ZB325/466571-025  | Appalachian |
| ZB326/466571-026  | Menthol     |
| ZB327/466571-027  | Woodruff    |
| ZB328/466571-028  | Malachite   |
| ZB329/466571-029  | Botanist    |
| ZB330/466571-030  | Woodlet     |
| ZB331/466571-031  | Katydid     |
| ZB332/466571-032  | Exuberant   |
| ZB333/466571-033  | Retrospect  |

| Beck continued   |                      |
|------------------|----------------------|
| ZB334/466571-034 | Lambic               |
| ZB335/466571-035 | Argil                |
| ZB336/466571-036 | Brushstroke          |
| ZB337/466571-037 | Candescent           |
| ZB338/466571-038 | Reedbuck             |
| ZB339/466571-039 | Clayware             |
| ZB340/466571-040 | Curio                |
| ZB341/466571-041 | Whimsy               |
| ZB342/466571-042 | Effervescent         |
| ZB343/466571-043 | Lingonberry          |
| ZB344/466571-044 | Resplendent          |
| ZB345/466571-045 | Hollyhock            |
| ZB346/466571-046 | Filigree             |
| ZB347/466571-047 | Plutonic             |
| ZB348/466571-048 | Foundry              |
| ZB349/466571-049 | Patisserie           |
| ZB390            | Gold 007/032/033 *   |
| ZB391            | Russet 036/040/039 * |
| ZB392            | Indigo 008/013/014 * |
| ZB393            | Forest 006/031/028 * |

\* Colors available only on  
Girard Color Wheel Ottoman.

| Bellano - Geiger Textile |             |
|--------------------------|-------------|
| Ancillary                |             |
| 55" wide                 |             |
| 75% wool                 |             |
| 10% linen                |             |
| 8% nylon                 |             |
| 7% alpaca                |             |
| 1AX01                    | Pearl       |
| 1AX02                    | Fog         |
| 1AX03                    | Fawn        |
| 1AX04                    | Pumice      |
| 1AX05                    | Pewter      |
| 1AX06                    | Atlantic    |
| 1AX07                    | Black Green |
| 1AX08                    | Adriatic    |
| 1AX09                    | Coffee      |
| 1AX10                    | Charcoal    |
| 1AX11                    | Umber       |
| 1AX12                    | Magenta     |
| 1AX13                    | Bittersweet |
| 1AX14                    | Sunflower   |

| Capri - Geiger Textile           |                |
|----------------------------------|----------------|
| Ancillary                        |                |
| 55" wide                         |                |
| 36% cotton                       |                |
| 32% acrylic                      |                |
| 24% rayon                        |                |
| 8% polyester                     |                |
| PFOA-Free stain resistant finish |                |
| Acrylic backing                  |                |
| 17201                            | Snow           |
| 17202                            | Stone          |
| 17203                            | Trench         |
| 17204                            | Graphite       |
| 17205                            | Anthracite     |
| 17206                            | Light Silver   |
| 17207                            | Russet         |
| 17208                            | Chestnut Brown |
| 17209                            | Sand           |
| 17210                            | Sterling       |
| 17211                            | Cobalt         |
| 17212                            | Ink            |

| Mantle - Maharam       |           |
|------------------------|-----------|
| Ancillary/Seating      |           |
| 59% recycled polyester |           |
| 37% polyester          |           |
| 4% spandex             |           |
| 8PV01                  | Pavement  |
| 8PV02                  | Future    |
| 8PV03                  | Piper     |
| 8PV04                  | Manifesto |
| 8PV05                  | Mapo      |
| 8PV06                  | Redwood   |
| 8PV07                  | Rocky     |
| 8PV08                  | Impala    |
| 8PV09                  | Warbler   |
| 8PV10                  | Guild     |
| 8PV11                  | Kinetic   |
| 8PV12                  | Behold    |
| 8PV13                  | Orb       |
| 8PV14                  | Sport     |
| 8PV15                  | Utopia    |
| 8PV16                  | True      |
| 8PV17                  | Galore    |

Price category 7 continued on  
next page

Appendix: Textile Colors

# Textile Colors

continued

## GSA

### Price Category 7

continued

### Price Category 8

#### Mantle continued

|       |            |
|-------|------------|
| 8PV18 | Parsley    |
| 8PV19 | Dare       |
| 8PV20 | Branzino   |
| 8PV21 | Network    |
| 8PV22 | Standard   |
| 8PV23 | Salamander |
| 8PV24 | Oscillate  |

#### Milaner - Geiger Textile

Ancillary

55" wide

56% wool, 10% acrylic

10% alpaca, 10% cotton

8% nylon, 6% rayon

|       |             |
|-------|-------------|
| 17101 | Linen       |
| 17102 | Flax        |
| 17103 | Bark        |
| 17104 | Deep Navy   |
| 17105 | Charcoal    |
| 17106 | Medium Grey |
| 17107 | Ash         |
| 17108 | Crimson     |

#### Panno di Dolce - Geiger Textile

|            |                    |
|------------|--------------------|
| Ancillary  |                    |
| 55" wide   |                    |
| 65% wool   |                    |
| 20% nylon  |                    |
| 15% alpaca |                    |
| 1AV01      | Fog                |
| 1AV02      | Dune               |
| 1AV03      | Trench             |
| 1AV04      | Flannel            |
| 1AV05      | Charcoal           |
| 1AV06      | Umber              |
| 1AV07      | Deep Navy          |
| 1AV08      | Graphite           |
| 1AV09      | Orange             |
| 1AV10      | Pink               |
| 1AV11      | Deep Red           |
| 1AV12      | Bright Green       |
| 1AV13      | Cerulean Blue      |
| 1AV14      | Deep Cerulean Blue |

#### Resca - Geiger Textile

|           |
|-----------|
| Ancillary |
| 56" wide  |
| 75% wool  |
| 10% linen |
| 8% nylon  |
| 7% alpaca |

|       |          |
|-------|----------|
| 1AW01 | Fog      |
| 1AW02 | Dune     |
| 1AW03 | Trench   |
| 1AW04 | Flannel  |
| 1AW05 | Umber    |
| 1AW06 | Bordeaux |

#### Rowan - Maharam

|                   |
|-------------------|
| Ancillary/Seating |
| 77% wool          |
| 12% nylon         |
| 6% acrylic        |
| 5% linen          |

|       |              |
|-------|--------------|
| 5K301 | Kingdom      |
| 5K302 | Northern     |
| 5K303 | Rabbit       |
| 5K304 | Elephant     |
| 5K305 | Furrow       |
| 5K306 | Heirloom     |
| 5K307 | Appear       |
| 5K308 | Repose       |
| 5K309 | Blackcurrant |
| 5K310 | Courage      |
| 5K311 | Bordeaux     |
| 5K312 | Cherish      |
| 5K313 | Brickfield   |
| 5K314 | Hibiscus     |
| 5K315 | Carnelian    |
| 5K316 | Cinnabar     |
| 5K317 | Toasted      |
| 5K318 | Revea        |
| 5K319 | Cortado      |
| 5K320 | Medallion    |
| 5K321 | Polenta      |
| 5K322 | Prized       |
| 5K323 | Travertine   |
| 5K324 | Companion    |
| 5K325 | Library      |
| 5K326 | Fable        |

#### Rowan continued

|       |            |
|-------|------------|
| 5K327 | Pixie      |
| 5K328 | Arboretum  |
| 5K329 | Ease       |
| 5K330 | Sapling    |
| 5K331 | Cottonwood |
| 5K332 | Scout      |
| 5K333 | Valleyside |
| 5K334 | Ornament   |
| 5K335 | Zucchini   |
| 5K336 | Ethereal   |
| 5K337 | Springtide |
| 5K338 | Traverse   |
| 5K339 | Untold     |
| 5K340 | Flowing    |
| 5K341 | Laguna     |
| 5K342 | Cerulean   |
| 5K343 | Soundscape |
| 5K344 | Message    |
| 5K345 | Freefall   |
| 5K346 | Musical    |
| 5K347 | Puzzle     |
| 5K348 | Operatic   |
| 5K349 | Daydream   |
| 5K350 | Shale      |
| 5K351 | Forward    |
| 5K352 | Anthracite |

#### Wool Tweed - Geiger Textile

|                     |           |
|---------------------|-----------|
| Ancillary           |           |
| 54" wide            |           |
| 80% wool, 20% nylon |           |
| 16601               | Trench    |
| 16602               | Pewter    |
| 16603               | Ruby      |
| 16604               | Blue Gray |
| 16605               | Navy      |
| 16606               | Umber     |
| 16607               | Charcoal  |

#### Luca - Maharam

|                                 |            |
|---------------------------------|------------|
| Ancillary/Seating               |            |
| 59" wide                        |            |
| 75% post-consumer recycled wool |            |
| 20% polyester                   |            |
| 5% nylon                        |            |
| ZLU01/466566-001                | Brioche    |
| ZLU02/466566-002                | Blanched   |
| ZLU03/466566-003                | Relic      |
| ZLU04/466566-004                | Sinter     |
| ZLU05/466566-005                | Scoria     |
| ZLU06/466566-006                | Austere    |
| ZLU07/466566-007                | Pigment    |
| ZLU08/466566-008                | Alkali     |
| ZLU09/466566-009                | Tidal      |
| ZLU10/466566-010                | Imbue      |
| ZLU11/466566-011                | Reservoir  |
| ZLU12/466566-012                | Brine      |
| ZLU13/466566-013                | Undertone  |
| ZLU14/466566-014                | Prelude    |
| ZLU15/466566-015                | Submerge   |
| ZLU16/466566-016                | Cypress    |
| ZLU17/466566-017                | Awash      |
| ZLU18/466566-018                | Adriatic   |
| ZLU19/466566-019                | Province   |
| ZLU20/466566-020                | Virescent  |
| ZLU21/466566-021                | Nettle     |
| ZLU22/466566-022                | Agrarian   |
| ZLU23/466566-023                | Serpentine |
| ZLU24/466566-024                | Laurel     |
| ZLU25/466566-025                | Clarion    |
| ZLU26/466566-026                | Gooseberry |
| ZLU27/466566-027                | Swelter    |
| ZLU28/466566-028                | Etruscan   |
| ZLU29/466566-029                | Coulis     |
| ZLU30/466566-030                | Rubescient |
| ZLU31/466566-031                | Akoya      |
| ZLU32/466566-032                | Radiant    |
| ZLU33/466566-033                | Regent     |
| ZLU34/466566-034                | Spectral   |
| ZLU35/466566-035                | Thistle    |



# Textile Colors

continued

## GSA

### Price Category 9

| Gemma – Maharam   |             |
|-------------------|-------------|
| Ancillary/Seating |             |
| 55" wide          |             |
| 85% wool          |             |
| 15% nylon         |             |
| ZGE01/466568-001  | Crinoline   |
| ZGE02/466568-002  | Angelic     |
| ZGE03/466568-003  | Savory      |
| ZGE04/466568-004  | Honeycomb   |
| ZGE05/466568-005  | Gilded      |
| ZGE06/466568-006  | Paddleboat  |
| ZGE07/466568-007  | Stagecoach  |
| ZGE08/466568-008  | Waterbuck   |
| ZGE09/466568-009  | Earnest     |
| ZGE10/466568-010  | Auric       |
| ZGE11/466568-011  | Carmine     |
| ZGE12/466568-012  | Serape      |
| ZGE13/466568-013  | Ferric      |
| ZGE14/466568-014  | Canyon      |
| ZGE15/466568-015  | Alembic     |
| ZGE16/466568-016  | Patio       |
| ZGE17/466568-017  | Sorrel      |
| ZGE18/466568-018  | Root        |
| ZGE19/466568-019  | Mansion     |
| ZGE20/466568-020  | Buff        |
| ZGE21/466568-021  | Starch      |
| ZGE22/466568-022  | Dawn        |
| ZGE23/466568-023  | Countryside |
| ZGE24/466568-024  | Dewy        |
| ZGE25/466568-025  | Reliquary   |
| ZGE26/466568-026  | Deluge      |
| ZGE27/466568-027  | Overlay     |
| ZGE28/466568-028  | Electron    |
| ZGE29/466568-029  | Sheath      |
| ZGE30/466568-030  | Quietude    |
| ZGE31/466568-031  | Jargon      |
| ZGE32/466568-032  | Powder      |
| ZGE33/466568-033  | Tide        |
| ZGE34/466568-034  | Outwash     |
| ZGE35/466568-035  | Enamored    |
| ZGE36/466568-036  | Smitten     |
| ZGE37/466568-037  | Revere      |
| ZGE38/466568-038  | Mangosteen  |
| ZGE39/466568-039  | Allium      |
| ZGE40/466568-040  | Immense     |

| Gemma continued  |           |
|------------------|-----------|
| ZGE41/466568-041 | Chamber   |
| ZGE42/466568-042 | Cosmos    |
| ZGE43/466568-043 | Inkling   |
| ZGE44/466568-044 | Rainwater |
| ZGE45/466568-045 | Shade     |
| ZGE46/466568-046 | Pendant   |
| ZGE47/466568-047 | Axial     |
| ZGE48/466568-048 | Fervent   |
| ZGE49/466568-049 | Legacy    |
| ZGE50/466568-050 | Caliber   |
| ZGE51/466568-051 | Temple    |
| ZGE52/466568-052 | Evenfall  |

| Jasper - Maharam        |              |
|-------------------------|--------------|
| Seating                 |              |
| 53" wide                |              |
| 55% wool                |              |
| 27% solution-dyed nylon |              |
| 18% cotton              |              |
| ZJA01/466563-001        | Thrill       |
| ZJA02/466563-002        | Anise        |
| ZJA03/466563-003        | Grapefruit   |
| ZJA04/466563-004        | Lifeguard    |
| ZJA05/466563-005        | Heartfelt    |
| ZJA06/466563-006        | Corsage      |
| ZJA07/466563-007        | Earthenware  |
| ZJA08/466563-008        | Bear         |
| ZJA09/466563-009        | Firelight    |
| ZJA10/466563-010        | Dreamcatcher |
| ZJA11/466563-011        | Bobcat       |
| ZJA12/466563-012        | Glacial      |
| ZJA13/466563-013        | Vaporize     |
| ZJA14/466563-014        | Trapdoor     |
| ZJA15/466563-015        | Halcyon      |
| ZJA16/466563-016        | Observatory  |
| ZJA17/466563-017        | Steamboat    |
| ZJA18/466563-018        | Aquathlon    |
| ZJA19/466563-019        | Cloudless    |
| ZJA20/466563-020        | Briny        |
| ZJA21/466563-021        | Magical      |
| ZJA22/466563-022        | Picnic       |
| ZJA23/466563-023        | Herbage      |
| ZJA24/466563-024        | Pasture      |
| ZJA25/466563-025        | Courtyard    |
| ZJA26/466563-026        | Leapfrog     |

| Leather                     |                 |
|-----------------------------|-----------------|
| Ancillary/Seating           |                 |
| approx. 50 sq. ft. per hide |                 |
| 100% leather                |                 |
| 2101                        | Ivory           |
| 2109                        | Black *         |
| 2110                        | Smoke           |
| 2111                        | Graphite        |
| 2112                        | Khaki           |
| 2113                        | Rattan          |
| 2114                        | Truffle         |
| 2115                        | Alpine          |
| 2116                        | Haze            |
| 2117                        | Sable Grey      |
| 2118                        | Dark Mineral ** |
| 2119                        | Dark Carbon *** |
| 2120                        | Cranberry       |
| 2121                        | Deep Sea        |

\* Armpad color available on Aeron® Chair, Graphite.  
 \*\* Armpad color available on Aeron Chair, Mineral.  
 \*\*\* Armpad color available on Aeron Chair, Carbon.

### Price Category 10

| Bristol Leather - Geiger Textile |                |
|----------------------------------|----------------|
| Ancillary                        |                |
| approx. 55 sq. ft. per hide      |                |
| 100% leather                     |                |
| 5-507                            | Black          |
| 5-511                            | Putty          |
| 5-519                            | Hunter         |
| 5-520                            | White          |
| 5-521                            | Ivory          |
| 5-522                            | Parchment      |
| 5-537                            | Caribbean      |
| 5-546                            | Pumice         |
| 5-547                            | Smoke          |
| 5-548                            | Charcoal       |
| 5-549                            | Dark Shale     |
| 5-556                            | Downtown Grey  |
| 5-557                            | City Night     |
| 5-559                            | Ash Grey       |
| 5-563                            | Champagne      |
| 5-564                            | Chestnut Brown |
| 5-565                            | Dark Sienna    |
| 5-566                            | Earthen        |
| 5-567                            | Desert         |
| 5-568                            | British Green  |
| 5-579                            | Paris Blue     |
| 5-583                            | Atlantic       |
| 5-592                            | Camel          |
| 5-594                            | Taupe          |
| 5-597                            | Pure           |
| 5-598                            | Cream          |
| 5-600                            | Midnight Blue  |
| 5-603                            | Sangria        |
| 5-604                            | Swiss Red      |
| 5-605                            | Nordic Yellow  |
| 5-606                            | Sky Grey       |
| 5-608                            | Natural        |

Price category 10 continued on next page

# Textile Colors

continued

## GSA

### Price Category 10

continued

| Firma – Maharam   |            |
|-------------------|------------|
| Ancillary/Seating |            |
| 55" wide          |            |
| 78% wool          |            |
| 22% nylon         |            |
| 3KH01/466582-001  | Wrath      |
| 3KH02/466582-002  | Pantomime  |
| 3KH03/466582-003  | Shaded     |
| 3KH04/466582-004  | Prologue   |
| 3KH05/466582-005  | Framework  |
| 3KH06/466582-006  | Railroad   |
| 3KH07/466582-007  | Grommet    |
| 3KH08/466582-008  | Lunisolar  |
| 3KH09/466582-009  | Snowpack   |
| 3KH10/466582-010  | Coldsnap   |
| 3KH11/466582-011  | Sealift    |
| 3KH12/466582-012  | Brood      |
| 3KH13/466582-013  | Intertidal |
| 3KH14/466582-014  | Confide    |
| 3KH15/466582-015  | Secluded   |
| 3KH16/466582-016  | Leisure    |
| 3KH17/466582-017  | Portfolio  |
| 3KH18/466582-018  | Strato     |
| 3KH19/466582-019  | Fogbow     |
| 3KH20/466582-020  | Snowcone   |
| 3KH21/466582-021  | Kazoo      |
| 3KH22/466582-022  | Esteem     |
| 3KH23/466582-023  | Mackerel   |
| 3KH24/466582-024  | Brooch     |
| 3KH25/466582-025  | Caesious   |
| 3KH26/466582-026  | Islet      |
| 3KH27/466582-027  | Biosphere  |
| 3KH28/466582-028  | Hilltop    |
| 3KH29/466582-029  | Arboreal   |
| 3KH30/466582-030  | Lineage    |
| 3KH31/466582-031  | Comfrey    |
| 3KH32/466582-032  | Circe      |
| 3KH33/466582-033  | Ecosystem  |
| 3KH34/466582-034  | Knack      |
| 3KH35/466582-035  | Watt       |
| 3KH36/466582-036  | Epiphany   |
| 3KH37/466582-037  | Gamma      |
| 3KH38/466582-038  | Taxicab    |
| 3KH39/466582-039  | Varietal   |

| Gemma Multi – Maharam |             |
|-----------------------|-------------|
| Ancillary/Seating     |             |
| 55" wide              |             |
| 85% wool              |             |
| 15% nylon             |             |
| ZGF01/466569-001      | Andromeda   |
| ZGF02/466569-002      | Dappled     |
| ZGF03/466569-003      | Lyra        |
| ZGF04/466569-004      | Flaunt      |
| ZGF05/466569-005      | Celluloid   |
| ZGF06/466569-006      | Hydrozoa    |
| ZGF07/466569-007      | Firefly     |
| ZGF08/466569-008      | Pisces      |
| ZGF09/466569-009      | Strath      |
| ZGF10/466569-010      | Erosion     |
| ZGF11/466569-011      | Cabaret     |
| ZGF12/466569-012      | Candytuft   |
| ZGF13/466569-013      | Juice       |
| ZGF14/466569-014      | Fairground  |
| ZGF15/466569-015      | Copperplate |
| ZGF16/466569-016      | Sunbird     |
| ZGF17/466569-017      | Cinematic   |
| ZGF18/466569-018      | Clairvoyant |
| ZGF19/466569-019      | Crocus      |
| ZGF20/466569-020      | Memoir      |
| ZGF21/466569-021      | Roulette    |
| ZGF22/466569-022      | Voltaic     |
| ZGF23/466569-023      | Compote     |
| ZGF24/466569-024      | Lambent     |
| ZGF25/466569-025      | Twister     |
| ZGF26/466569-026      | Chronicle   |
| ZGF27/466569-027      | Sidereal    |
| ZGF28/466569-028      | Tanzanite   |
| ZGF29/466569-029      | Crystalize  |
| ZGF30/466569-030      | Chromium    |
| ZGF31/466569-031      | Pallium     |
| ZGF32/466569-032      | Spectre     |
| ZGF33/466569-033      | Courgette   |
| ZGF34/466569-034      | Viper       |
| ZGF35/466569-035      | Sunlit      |
| ZGF36/466569-036      | Heavenly    |
| ZGF37/466569-037      | Vernal      |
| ZGF38/466569-038      | Cress       |
| ZGF39/466569-039      | Limn        |
| ZGF40/466569-040      | Horseradish |

| Gemma Multi continued |              |
|-----------------------|--------------|
| ZGF41/466569-041      | Shandy       |
| ZGF42/466569-042      | Granary      |
| ZGF43/466569-043      | Percolate    |
| ZGF44/466569-044      | Motor        |
| ZGF45/466569-045      | Unicorn      |
| ZGF46/466569-046      | Lobster      |
| ZGF47/466569-047      | Rhododendron |
| ZGF48/466569-048      | Taffy        |
| ZGF49/466569-049      | Rishi        |
| ZGF50/466569-050      | Backcountry  |
| ZGF51/466569-051      | Buckthorn    |
| ZGF52/466569-052      | Coniferous   |
| ZGF53/466569-053      | Delphic      |
| ZGF54/466569-054      | Hieroglyph   |
| ZGF55/466569-055      | Eiderdown    |
| ZGF56/466569-056      | Sandbar      |
| ZGF57/466569-057      | Tanager      |

| Gemma Multi Reverse – Maharam |           |
|-------------------------------|-----------|
| Ancillary/Seating             |           |
| 55" wide                      |           |
| 85% wool                      |           |
| 15% nylon                     |           |
| ZGF58/466569-101              | Andromeda |
|                               | Reverse   |
| ZGF59/466569-102              | Dappled   |
|                               | Reverse   |
| ZGF60/466569-103              | Lyra      |
|                               | Reverse   |
| ZGF61/466569-104              | Flaunt    |
|                               | Reverse   |
| ZGF62/466569-105              | Celluloid |
|                               | Reverse   |
| ZGF63/466569-106              | Hydrozoa  |
|                               | Reverse   |
| ZGF64/466569-107              | Firefly   |
|                               | Reverse   |
| ZGF65/466569-108              | Pisces    |
|                               | Reverse   |
| ZGF66/466569-109              | Strath    |
|                               | Reverse   |
| ZGF67/466569-110              | Erosion   |
|                               | Reverse   |

| Gemma Multi Reverse continued |             |
|-------------------------------|-------------|
| ZGF68/466569-111              | Cabaret     |
|                               | Reverse     |
| ZGF69/466569-112              | Candytuft   |
|                               | Reverse     |
| ZGF70/466569-113              | Juice       |
|                               | Reverse     |
| ZGF71/466569-114              | Fairground  |
|                               | Reverse     |
| ZGF72/466569-115              | Copperplate |
|                               | Reverse     |
| ZGF73/466569-116              | Sunbird     |
|                               | Reverse     |
| ZGF74/466569-117              | Cinematic   |
|                               | Reverse     |
| ZGF75/466569-118              | Clairvoyant |
|                               | Reverse     |
| ZGF76/466569-119              | Crocus      |
|                               | Reverse     |
| ZGF77/466569-120              | Memoir      |
|                               | Reverse     |
| ZGF78/466569-121              | Roulette    |
|                               | Reverse     |
| ZGF79/466569-122              | Voltaic     |
|                               | Reverse     |
| ZGF80/466569-123              | Compote     |
|                               | Reverse     |
| ZGF81/466569-124              | Lambent     |
|                               | Reverse     |
| ZGF82/466569-125              | Twister     |
|                               | Reverse     |
| ZGF83/466569-126              | Chronicle   |
|                               | Reverse     |
| ZGF84/466569-127              | Sidereal    |
|                               | Reverse     |
| ZGF85/466569-128              | Tanzanite   |
|                               | Reverse     |
| ZGF86/466569-129              | Crystalize  |
|                               | Reverse     |
| ZGF87/466569-130              | Chromium    |
|                               | Reverse     |
| ZGF88/466569-131              | Pallium     |
|                               | Reverse     |
| ZGF89/466569-132              | Spectre     |
|                               | Reverse     |

Price category 10 continued on next page



# Textile Colors

continued

## GSA

### Price Category 10

continued

#### Gemma Multi Reverse continued

|                  |              |
|------------------|--------------|
| ZGF90/466569-133 | Courgette    |
|                  | Reverse      |
| ZGF91/466569-134 | Viper        |
|                  | Reverse      |
| ZGF92/466569-135 | Sunlit       |
|                  | Reverse      |
| ZGF93/466569-136 | Heavenly     |
|                  | Reverse      |
| ZGF94/466569-137 | Vernal       |
|                  | Reverse      |
| ZGF95/466569-138 | Cress        |
|                  | Reverse      |
| ZGF96/466569-139 | Limn         |
|                  | Reverse      |
| ZGF97/466569-140 | Horseradish  |
|                  | Reverse      |
| ZGF98/466569-141 | Shandy       |
|                  | Reverse      |
| ZGF99/466569-142 | Granary      |
|                  | Reverse      |
| ZGFA0/466569-143 | Percolate    |
|                  | Reverse      |
| ZGFA1/466569-144 | Motor        |
|                  | Reverse      |
| ZGFA2/466569-145 | Unicorn      |
|                  | Reverse      |
| ZGFA3/466569-146 | Lobster      |
|                  | Reverse      |
| ZGFA4/466569-147 | Rhododendron |
|                  | Reverse      |
| ZGFA5/466569-148 | Taffy        |
|                  | Reverse      |
| ZGFA6/466569-149 | Rishi        |
|                  | Reverse      |
| ZGFA7/466569-150 | Backcountry  |
|                  | Reverse      |
| ZGFA8/466569-151 | Buckthorn    |
|                  | Reverse      |
| ZGFA9/466569-152 | Coniferous   |
|                  | Reverse      |
| ZGFB0/466569-153 | Delphic      |
|                  | Reverse      |

#### Gemma Multi Reverse continued

|                  |            |
|------------------|------------|
| ZGFB1/466569-154 | Hieroglyph |
|                  | Reverse    |
| ZGFB2/466569-155 | Eiderdown  |
|                  | Reverse    |
| ZGFB3/466569-157 | Tanager    |
|                  | Reverse    |

#### Petra - Maharam

|                   |             |
|-------------------|-------------|
| Ancillary/Seating |             |
| 55" wide          |             |
| 70% wool          |             |
| 19% linen         |             |
| 11% nylon         |             |
| ZP401/466580-001  | Hieroglyph  |
| ZP402/466580-002  | Interior    |
| ZP403/466580-003  | Samovar     |
| ZP404/466580-004  | Calcite     |
| ZP405/466580-005  | Silversmith |
| ZP406/466580-006  | Rivet       |
| ZP407/466580-007  | Carpolite   |
| ZP408/466580-008  | Bonbon      |
| ZP409/466580-009  | Dreamy      |
| ZP410/466580-010  | Bejewel     |
| ZP411/466580-011  | Sashimi     |
| ZP412/466580-012  | Spirula     |
| ZP413/466580-013  | Chalet      |
| ZP414/466580-014  | Reindeer    |
| ZP415/466580-015  | Nostalgia   |
| ZP416/466580-016  | Trove       |
| ZP417/466580-017  | Narcissus   |
| ZP418/466580-018  | Yurt        |
| ZP419/466580-019  | Congee      |
| ZP420/466580-020  | Genepy      |
| ZP421/466580-021  | Herbaceous  |
| ZP422/466580-022  | Paddock     |
| ZP423/466580-023  | Precious    |
| ZP424/466580-024  | Biome       |
| ZP425/466580-025  | Tinted      |
| ZP426/466580-026  | Pelagic     |
| ZP427/466580-027  | Bluebill    |
| ZP428/466580-028  | Chicory     |
| ZP429/466580-029  | Eaglet      |
| ZP430/466580-030  | Permafrost  |
| ZP431/466580-031  | Atlantic    |
| ZP432/466580-032  | Airstream   |
| ZP433/466580-033  | Debonair    |

### Price Category 11

#### Felix - Maharam

|                   |          |
|-------------------|----------|
| Ancillary/Seating |          |
| 85% wool          |          |
| 15% nylon         |          |
| 3BS01             | Angular  |
| 3BS02             | Shark    |
| 3BS03             | Easy     |
| 3BS04             | Cue      |
| 3BS05             | Rye      |
| 3BS06             | Champion |
| 3BS07             | Between  |
| 3BS08             | Propose  |
| 3BS09             | Rising   |
| 3BS10             | Tile     |
| 3BS11             | Place    |
| 3BS12             | Kernel   |
| 3BS13             | Pinnacle |
| 3BS14             | Darling  |
| 3BS15             | Seasonal |
| 3BS16             | Shipmate |
| 3BS17             | Jump     |
| 3BS18             | Geyser   |
| 3BS19             | Team     |

#### Prone Leather - Maharam

|                             |           |
|-----------------------------|-----------|
| Ancillary                   |           |
| approx. 50 sq. ft. per hide |           |
| 100% leather                |           |
| protective top coat         |           |
| 1NX01/700020-001            | Lotus     |
| 1NX02/700020-002            | Timbre    |
| 1NX03/700020-003            | Essence   |
| 1NX04/700020-004            | Script    |
| 1NX05/700020-005            | Gambit    |
| 1NX06/700020-006            | Obsidian  |
| 1NX07/700020-007            | Sail      |
| 1NX09/700020-009            | Vine      |
| 1NX10/700020-010            | Yarrow    |
| 1NX13/700020-013            | Balsa     |
| 1NX14/700020-014            | Shore     |
| 1NX15/700020-015            | Bricolage |
| 1NX17/700020-017            | Ledge     |
| 1NX19/700020-019            | Mantra    |
| 1NX20/700020-020            | Java      |
| 1NX21/700020-021            | Lute      |
| 1NX22/700020-022            | Glow      |
| 1NX23/700020-023            | Hickory   |

### Price Category A

No fabrics available at this time.

# Textile Colors

continued

GSA

## Price Category B

| Medium – Maharam                       |            |
|--|------------|
| Ancillary/Seating/Workspaces           |            |
| 54" wide                               |            |
| 100% polyester                         |            |
| VM01/463490-001                        | Raven      |
| VM02/463490-002                        | Smoke      |
| VM03/463490-003                        | Alloy      |
| VM04/463490-004                        | Flax       |
| VM07/463490-007                        | Espresso   |
| VM14/463490-014                        | Laser      |
| VM16/463490-016                        | Port       |
| VM22/463490-022                        | Marina     |
| VM29/463490-029                        | Pistachio  |
| VM32/463490-032                        | Prospect   |
| VM36/463490-036                        | Delight    |
| VM39/463490-039                        | Nautical   |
| VM40/463490-040                        | Pool       |
| VM44/463490-044                        | Washed     |
| VM45/463490-045                        | Sculpture  |
| VM46/463490-046                        | Thatched   |
| VM47/463490-047                        | Hike       |
| VM48/463490-048                        | Tangle     |
| VM49/463490-049                        | Pacific    |
| VM50/463490-050                        | Cosmic     |
| VM53/463490-053                        | Nasturtium |
| Messenger — Maharam                    |            |
| Ancillary/Seating/Workspaces           |            |
| 54" wide                               |            |
| 78% post-industrial recycled polyester |            |
| 15% polyester                          |            |
| 7% nylon                               |            |
| TI07/458640-007                        | Shadow     |
| TI08/458640-008                        | Bayou *    |
| TI24/458640-024                        | Poppy      |
| TI25/458640-025                        | Mao        |
| TI29/458640-029                        | Onyx *     |
| TI31/458640-031                        | Cloud *    |
| TI38/458640-038                        | Depth *    |
| TI40/458640-040                        | Nile *     |
| TI41/458640-041                        | Azure *    |
| TI45/458640-045                        | Cactus *   |

| Messenger continued  |             |
|--|-------------|
| TI46/458640-046  | Ice *       |
| TI48/458640-048  | Neon        |
| TI50/458640-050  | Hydrangea   |
| TI53/458640-053  | Tangelo     |
| TI54/458640-054  | Lumine *    |
| TI58/458640-058  | Snow **     |
| TI60/458640-060  | Peridot     |
| TI61/458640-061  | Capri *     |
| TI62/458640-062  | Ultramarine |
| TI63/458640-063  | Squall      |
| TI66/458640-066  | Cassis      |
| TI67/458640-067  | Aster       |
| TI69/458640-069  | Cherry      |
| TI70/458640-070  | Vibrant     |
| TI71/458640-071  | Satsuma *   |
| TI72/458640-072  | Maize       |
| TI76/458640-076  | Fossil      |
| TI77/458640-077  | Ash         |
| TI78/458640-078  | Tusk        |
| TI79/458640-079  | Oyster **   |
| TI81/458640-081  | Husk        |
| TI84/458640-084  | Robust      |
| TI85/458640-085  | Beyond      |
| TI86/458640-086  | Voyage *    |
| TI87/458640-087  | Everglade   |
| TI89/458640-089  | Blanch **   |
| TI90/458640-090  | Longspur    |
| TI91/458640-091  | Vireo       |
| TI92/458640-092  | Dipper      |
| TI93/458640-093  | Gale        |
| TI94/458640-094  | Hunter      |
| TI95/458640-095  | Lime        |
| TI96/458640-096  | Apple       |
| TI97/458640-097  | Krill       |
| TI98/458640-098  | Catalyst    |
| * Colors available on 20-day lead time.  |             |
| ** Colors not available on Eames Molded Fiberglass and Molded Plastic Side Chairs. |             |

## Price Category C

| Manner - Maharam                       |              |
|--|--------------|
| Ancillary/Seating/Workspaces           |              |
| 54" wide                               |              |
| 65% post-industrial recycled polyester |              |
| 35% post-consumer recycled polyester   |              |
| Z2701/466177-001                       | Magic        |
| Z2702/466177-002                       | Carob        |
| Z2703/466177-003                       | Porpoise     |
| Z2704/466177-004                       | Flint        |
| Z2705/466177-005                       | Hush *       |
| Z2706/466177-006                       | Nuance       |
| Z2711/466177-011                       | Ember        |
| Z2712/466177-012                       | Wagon        |
| Z2713/466177-013                       | Ablaze       |
| Z2714/466177-014                       | Peel         |
| Z2716/466177-016                       | Butterscotch |
| Z2717/466177-017                       | Harvest      |
| Z2720/466177-020                       | Parakeet     |
| Z2722/466177-022                       | Aquatic      |
| Z2723/466177-023                       | Cottage      |
| Z2724/466177-024                       | Dahlia       |
| Z2725/466177-025                       | Vivid        |
| Z2726/466177-026                       | Basin        |
| Z2727/466177-027                       | Schooner     |
| Z2729/466177-029                       | Silverpoint  |
| Z2730/466177-030                       | Lattice      |
| Z2731/466177-031                       | Smoky        |
| Z2732/466177-032                       | Magnetic     |
| Z2733/466177-033                       | Woad         |
| Z2734/466177-034                       | Resolute     |
| Z2735/466177-035                       | Cruise       |
| Z2736/466177-036                       | Atmospheric  |
| Z2737/466177-037                       | Cloudburst   |
| Z2738/466177-038                       | Tidewater    |
| Z2739/466177-039                       | Firth        |
| Z2740/466177-040                       | Oceanside    |
| Z2741/466177-041                       | Grandeur     |
| Z2742/466177-042                       | Comfort      |
| Z2743/466177-043                       | Dill         |
| Z2744/466177-044                       | Poplar       |
| Z2745/466177-045                       | Citronella   |
| Z2746/466177-046                       | Passerine    |

| Manner continued  |            |
|---|------------|
| Z2747/466177-047  | Southwest  |
| Z2748/466177-048  | Roseate    |
| Z2749/466177-049  | Charisma   |
| Z2750/466177-050  | Siltstone  |
| Z2751/466177-051  | Kimono     |
| Z2752/466177-052  | Valiant    |
| Z2753/466177-053  | Baroness   |
| * Color not available on Eames Aluminum Group, Executive Chairs, Upholstered Molded Plywood Chairs, and Sofa Compact. |            |
| Merit - Maharam   |            |
| Seating   |            |
| 54" wide  |            |
| 76% post-industrial recycled polyester  |            |
| 24% polyester   |            |
| PFOA-Free stain resistant   |            |
| 88Z01/466444-001  | Trickle    |
| 88Z02/466444-002  | Beluga     |
| 88Z03/466444-003  | Gunmetal   |
| 88Z04/466444-004  | Blackout   |
| 88Z05/466444-005  | Superior   |
| 88Z06/466444-006  | Ocean      |
| 88Z07/466444-007  | Highborn   |
| 88Z08/466444-008  | Immersed   |
| 88Z09/466444-009  | Rainfall   |
| 88Z10/466444-010  | Blizzard   |
| 88Z11/466444-011  | Poolside   |
| 88Z12/466444-012  | Steel      |
| 88Z13/466444-013  | Zircon     |
| 88Z14/466444-014  | Ripple     |
| 88Z15/466444-015  | Aegean     |
| 88Z16/466444-016  | Armada     |
| 88Z17/466444-017  | Hedera     |
| 88Z18/466444-018  | Rainforest |
| 88Z19/466444-019  | Gator      |
| 88Z20/466444-020  | Vineyard   |
| 88Z21/466444-021  | Pine       |
| 88Z22/466444-022  | Kiwi       |
| 88Z23/466444-023  | Kookaburra |

Price category C continued on next page

# Textile Colors

continued

## GSA

### Price Category C

continued

| Merit continued                        |           |
|--|-----------|
| 88Z24/466444-024                       | Bellini   |
| 88Z25/466444-025                       | Sunflower |
| 88Z26/466444-026                       | Sandstorm |
| 88Z27/466444-027                       | Mudder    |
| 88Z28/466444-028                       | Lynx      |
| 88Z29/466444-029                       | Farro     |
| 88Z30/466444-030                       | Manila    |
| 88Z31/466444-031                       | Starfish  |
| 88Z32/466444-032                       | Brass     |
| 88Z33/466444-033                       | Arrow     |
| 88Z34/466444-034                       | Gelato    |
| 88Z35/466444-035                       | Nectarine |
| 88Z36/466444-036                       | Macaron   |
| 88Z37/466444-037                       | Alert     |
| 88Z38/466444-038                       | Goji      |
| 88Z39/466444-039                       | Cabernet  |
| 88Z40/466444-040                       | Eggplant  |
| 88Z41/466444-041                       | Hawk      |
| 88Z42/466444-042                       | Stag      |
| 88Z43/466444-043                       | Overcast  |
| Metric – Maharam                       |           |
| Seating/Workspaces                     |           |
| 54" wide                               |           |
| 51% post-industrial recycled polyester |           |
| 49% polyester                          |           |
| Z302/466014-002                        | Fog       |
| Z303/466014-003                        | Fleece    |
| Z312/466014-012                        | Cardinal  |
| Z313/466014-013                        | Lava      |
| Z318/466014-018                        | Pollen    |
| Z320/466014-020                        | Alligator |
| Z323/466014-023                        | Tar       |
| Z324/466014-024                        | Anchor    |
| Z326/466014-026                        | Admiral   |
| Z327/466014-027                        | Seaport   |
| Z328/466014-028                        | Scuba     |
| Z329/466014-029                        | Skate     |
| Z330/466014-030                        | Hopscotch |
| Z331/466014-031                        | Film      |
| Z332/466014-032                        | Whale     |
| Z333/466014-033                        | Downpour  |
| Z334/466014-034                        | Midday    |

| Metric continued          |             |
|---------------------------|-------------|
| Z335/466014-035           | Talisman    |
| Z336/466014-036           | Hedgerow    |
| Z337/466014-037           | Snorkel     |
| Z338/466014-038           | Highway     |
| Z339/466014-039           | Canary      |
| Z340/466014-040           | Sunny       |
| Z341/466014-041           | Aztec       |
| Z342/466014-042           | Fruit       |
| Z343/466014-043           | Galah       |
| Z344/466014-044           | Kiln        |
| Z345/466014-045           | Moth        |
| Murmur - Maharam          |             |
| Seating                   |             |
| 55" wide                  |             |
| 100% polyester            |             |
| PFOA-Free stain resistant |             |
| 8EY01/466446-001          | Gust        |
| 8EY02/466446-002          | Harmonica   |
| 8EY03/466446-003          | Canopy      |
| 8EY04/466446-004          | Dim         |
| 8EY05/466446-005          | Peppercorn  |
| 8EY06/466446-006          | Cauldron    |
| 8EY07/466446-007          | Conquer     |
| 8EY08/466446-008          | Rapids      |
| 8EY09/466446-009          | Seawater    |
| 8EY10/466446-010          | Baby        |
| 8EY11/466446-011          | Elderberry  |
| 8EY12/466446-012          | Iceberg     |
| 8EY13/466446-013          | Tallgrass   |
| 8EY14/466446-014          | Underground |
| 8EY15/466446-015          | Biome       |
| 8EY16/466446-016          | Cask        |
| 8EY17/466446-017          | Argan       |
| 8EY18/466446-018          | Sundown     |
| 8EY19/466446-019          | Ignite      |
| 8EY20/466446-020          | Sultry      |
| 8EY21/466446-021          | Sangria     |

### Price Category D

| Bluff - Maharam                      |            |
|--------------------------------------|------------|
| Ancillary/Seating                    |            |
| 54" wide                             |            |
| 100% polyurethane                    |            |
| Ink-resistant protective top coat    |            |
| Polyester backing                    |            |
| 8I801/466489-001                     | Loom       |
| 8I802/466489-002                     | Helm       |
| 8I803/466489-003                     | Cruller    |
| 8I804/466489-004                     | Folklore   |
| 8I805/466489-005                     | Beguile    |
| 8I806/466489-006                     | Sherpa     |
| 8I807/466489-007                     | Teleport   |
| 8I808/466489-008                     | Annex      |
| 8I809/466489-009                     | Lorimer    |
| 8I810/466489-010                     | Cinema     |
| 8I811/466489-011                     | Zip        |
| 8I812/466489-012                     | Coach      |
| 8I813/466489-013                     | Supernova  |
| 8I814/466489-014                     | Pirate     |
| 8I815/466489-015                     | Academy    |
| 8I816/466489-016                     | Disco      |
| 8I817/466489-017                     | Equator    |
| 8I818/466489-018                     | Brink      |
| 8I819/466489-019                     | Scene      |
| 8I820/466489-020                     | Petrichor  |
| 8I821/466489-021                     | Exotic     |
| 8I822/466489-022                     | Fauna      |
| 8I823/466489-023                     | Calabash   |
| 8I824/466489-024                     | Fuscous    |
| 8I825/466489-025                     | Wildling   |
| 8I826/466489-026                     | Blitz      |
| 8I827/466489-027                     | Allspice   |
| 8I828/466489-028                     | Lumos      |
| 8I829/466489-029                     | Pilot      |
| 8I830/466489-030                     | Jukebox    |
| 8I831/466489-031                     | Dugout     |
| 8I832/466489-032                     | Claret     |
| 8I833/466489-033                     | Flamenco   |
| Mode – Maharam                       |            |
| Ancillary/Seating/Workspaces         |            |
| 54" wide                             |            |
| 80% post-consumer recycled polyester |            |
| 20% polyester                        |            |
| PFOA-Free stain resistant finish     |            |
| ZMD01/466337-001                     | Stroll     |
| ZMD02/466337-002                     | Intaglio   |
| ZMD03/466337-003                     | Ominous    |
| ZMD04/466337-004                     | Machine    |
| ZMD05/466337-005                     | Talus      |
| ZMD06/466337-006                     | Marsh      |
| ZMD07/466337-007                     | Hollow     |
| ZMD08/466337-008                     | Sycamore   |
| ZMD09/466337-009                     | Clavicle   |
| ZMD10/466337-010                     | Billygoat  |
| ZMD11/466337-011                     | Spindle    |
| ZMD12/466337-012                     | Lemon      |
| ZMD13/466337-013                     | Oxeye      |
| ZMD14/466337-014                     | Henge      |
| ZMD15/466337-015                     | Goldenrod  |
| ZMD16/466337-016                     | Cottontail |
| ZMD17/466337-017                     | Lioness    |
| ZMD18/466337-018                     | Oriole     |
| ZMD19/466337-019                     | Rust       |
| ZMD20/466337-020                     | Carotene   |
| ZMD21/466337-021                     | Blush      |
| ZMD22/466337-022                     | Vermillion |
| ZMD23/466337-023                     | Alder      |
| ZMD24/466337-024                     | Kermes     |
| ZMD25/466337-025                     | Barberry   |
| ZMD26/466337-026                     | Petal      |
| ZMD27/466337-027                     | Valley     |
| ZMD28/466337-028                     | Odyssey    |
| ZMD29/466337-029                     | Ballpoint  |
| ZMD30/466337-030                     | Toile      |
| ZMD31/466337-031                     | Paradise   |

Price category D continued on next page

# Textile Colors

continued

## GSA

### Price Category D

continued

#### Mode continued

|                  |            |
|------------------|------------|
| ZMD32/466337-032 | Angelfish  |
| ZMD33/466337-033 | Denim      |
| ZMD34/466337-034 | Crush      |
| ZMD35/466337-035 | Jetty      |
| ZMD36/466337-036 | Saltwater  |
| ZMD37/466337-037 | Mallard    |
| ZMD38/466337-038 | Celtic     |
| ZMD39/466337-039 | Eucalyptus |
| ZMD40/466337-040 | Bonsai     |
| ZMD41/466337-041 | Sassafras  |
| ZMD42/466337-042 | Yucca      |
| ZMD43/466337-043 | Lichen     |

#### Spiral - Maharam

|                  |          |
|------------------|----------|
| Workspaces       |          |
| 66" wide         |          |
| 100% polyester   |          |
| ZS301/901882-001 | Chalk    |
| ZS303/901882-003 | Wheat    |
| ZS304/901882-004 | Mica     |
| ZS305/901882-005 | Pavement |
| ZS306/901882-006 | Graphite |

### Price Category E

#### Article – Maharam

| Ancillary/Seating |            |
|-------------------|------------|
| 54" wide          |            |
| 100% vinyl        |            |
| ZAT08/458600-008  | Marina     |
| ZAT13/458600-013  | Flume      |
| ZAT14/458600-014  | Storm      |
| ZAT15/458600-015  | Toast      |
| ZAT19/458600-019  | Fleece     |
| ZAT22/458600-022  | Stone      |
| ZAT26/458600-026  | Mercury    |
| ZAT29/458600-029  | Bluegrass  |
| ZAT31/458600-031  | Truffle    |
| ZAT32/458600-032  | Gravel     |
| ZAT33/458600-033  | Value      |
| ZAT34/458600-034  | Tint       |
| ZAT35/458600-035  | Snowflake  |
| ZAT36/458600-036  | Chalice    |
| ZAT37/458600-037  | Trail      |
| ZAT38/458600-038  | Pyramid    |
| ZAT39/458600-039  | Desert     |
| ZAT40/458600-040  | Lei        |
| ZAT41/458600-041  | Rouge      |
| ZAT42/458600-042  | Karma      |
| ZAT43/458600-043  | Opal       |
| ZAT44/458600-044  | Periwinkle |
| ZAT45/458600-045  | Vampire    |
| ZAT46/458600-046  | Surf       |
| ZAT47/458600-047  | Plumage    |

#### Micro – Maharam

|                  |           |
|------------------|-----------|
| Ancillary        |           |
| 54" wide         |           |
| 100% vinyl       |           |
| ZMB01/466099-001 | Muslin    |
| ZMB04/466099-004 | Basalt    |
| ZMB06/466099-006 | Phantom   |
| ZMB07/466099-007 | Depth     |
| ZMB08/466099-008 | Cottage   |
| ZMB09/466099-009 | Hunter    |
| ZMB11/466099-011 | Tomatillo |
| ZMB12/466099-012 | Brew      |
| ZMB14/466099-014 | Tang      |
| ZMB15/466099-015 | Risk      |

#### Parallel — Maharam

|                         |          |
|-------------------------|----------|
| Workspaces              |          |
| 66" wide                |          |
| 100% recycled polyester |          |
| TT03/901180-003         | Fog      |
| TT22/901180-022         | Sterling |
| TT23/901180-023         | Linen    |
| TT24/901180-024         | Pea      |
| TT27/901180-027         | Boulder  |
| TT28/901180-028         | Stream   |
| TT29/901180-029         | Shiitake |
| TT32/901180-032         | Brandy   |
| TT33/901180-033         | Crater   |
| TT36/901180-036         | Quail    |

### Price Category F

#### Apt – Maharam

|                                   |
|-----------------------------------|
| Ancillary/Seating                 |
| 54" wide                          |
| 100% polyurethane/silicone        |
| Ink-resistant protective top coat |
| Polyester backing                 |
| 82T12/466392-012 Iris             |
| 82T13/466392-013 Nocturnal        |
| 82T14/466392-014 Fluid            |
| 82T15/466392-015 Eden             |
| 82T16/466392-016 Galactic         |
| 82T17/466392-017 Shoreline        |
| 82T18/466392-018 Jade             |
| 82T19/466392-019 Garden           |
| 82T20/466392-020 Botanic          |
| 82T21/466392-021 Chartreuse       |
| 82T23/466392-023 Lyric            |
| 82T24/466392-024 Turmeric         |
| 82T25/466392-025 Bengal           |
| 82T26/466392-026 Core             |
| 82T27/466392-027 Mantle           |
| 82T28/466392-028 Sorbet           |
| 82T32/466392-032 Oak              |
| 82T33/466392-033 Castle           |
| 82T34/466392-034 Follow           |
| 82T35/466392-035 Elixir           |
| 82T36/466392-036 Charm            |
| 82T37/466392-037 Descend          |
| 82T38/466392-009 Sketch           |
| 82T39/466392-010 Glacier          |
| 82T40/466392-031 Fortress         |
| 82T41/466392-030 Lotus            |
| 82T42/466392-001 Coconut          |
| 82T43/466392-011 Cobblestone      |
| 82T44/466392-029 Bloom            |
| 82T45/466392-022 Crepe            |
| 82T46/466392-006 Hickory          |
| 82T47/466392-007 Constellation    |
| 82T48/466392-008 Labyrinth        |
| 82T49/466392-002 Vibe             |
| 82T50/466392-003 Stampede         |
| 82T51/466392-004 Lumber           |
| 82T52/466392-005 Gingerbread      |

Price category F continued on next page

# Textile Colors

continued

## GSA

### Price Category F

continued

| Emit – Maharam                         | Instill <i>continued</i>     | Ledger – Maharam                       | Pepper - Maharam                               |
|--|------------------------------|--|--|
| Workspaces                             | 74M19/466351-019 Koala       | Ancillary/Seating                      | Seating  |
| 54” wide                               | 74M20/466351-020 Dorsal      | 54” wide                               | 58” wide                                       |
| 55% post-industrial recycled polyester | 74M21/466351-021 Stealth     | 100% polyurethane                      | 49% polyester                                  |
| 45% post-consumer recycled polyester   | 74M22/466351-022 Mosey       | V9G1/463770-001 001                    | 41% post-industrial recycled polyester         |
| PFOA-free stain resistant              | 74M23/466351-023 Beachfront  | V9G2/463770-002 002                    | 10% post-consumer recycled polyester           |
| 8EX01/466378-001 Wed                   | 74M24/466351-024 Discovery   | V9G3/463770-003 003                    | PFOA-Free stain resistant                      |
| 8EX02/466378-002 Zebra                 | 74M25/466351-025 Grasp       | V9G4/463770-004 004                    | Acrylic Backing                                |
| 8EX03/466378-003 Chiffon               | 74M26/466351-026 Arboreous   | V9GG/463770-017 017                    | 8LW01/466486-001 Dojo                          |
| 8EX05/466378-005 Nectar                | 74M27/466351-027 Yearling    | V9GQ/463770-025 025                    | 8LW02/466486-002 Marengo                       |
| 8EX06/466378-006 Elk                   | 74M28/466351-028 Allele      | V9GS/463770-026 026                    | 8LW03/466486-003 Harlequin                     |
| 8EX08/466378-008 Goldenrod             | 74M29/466351-029 Eager       | V9GU/463770-028 028                    | 8LW04/466486-004 Pavlova                       |
| 8EX09/466378-009 Beached               | 74M30/466351-030 Rise        | V9GV/463770-029 029                    | 8LW06/466486-006 Achiote                       |
| 8EX10/466378-010 Samba                 | 74M31/466351-031 Latte       | V9GW/463770-030 030                    | 8LW07/466486-007 Essence                       |
| 8EX11/466378-011 Nest                  | 74M32/466351-032 Compose     | V9GX/463770-031 031                    | 8LW08/466486-008 Genome                        |
| 8EX14/466378-014 Groove                | 74M33/466351-033 Furrow      | V9GY/463770-032 032                    | 8LW09/466486-009 Myriad                        |
| 8EX17/466378-017 Haiku                 | 74M34/466351-034 Tenor       | V9G18/463770-042 042                   | 8LW10/466486-010 Terrarium                     |
| 8EX18/466378-018 Bluefin               | 74M35/466351-035 Annatto     | V9G19/463770-043 043                   |  |
| 8EX19/466378-019 Flow                  | 74M36/466351-036 Together    | V9G20/463770-044 044                   | <b>Pitch - Maharam</b>                         |
| 8EX20/466378-020 Xenon                 | 74M37/466351-037 Intention   | V9G21/463770-045 045                   | Ancillary                                      |
| 8EX21/466378-021 Artem                 | 74M38/466351-038 Overnight   | V9G22/463770-046 046                   | 54” wide                                       |
| 8EX22/466378-022 Zen                   | 74M39/466351-039 Icecap      |  | 100% vinyl                                     |
| 8EX25/466378-025 Limeade               | 74M40/466351-040 Metamorphic | <b>Loop - Maharam</b>                  | ZPC04/466186-004 Pollen                        |
|  | 74M41/466351-041 Anthracite  | Seating                                | ZPC07/466186-007 Apple                         |
|  |                              | 57” wide                               | ZPC11/466186-011 Voyage                        |
|  |                              | 48% post-industrial recycled polyester | ZPC12/466186-012 Turquoise                     |
|  |                              | 26% polyester                          | ZPC14/466186-014 Inlet                         |
|  |                              | 26% post-consumer recycled polyester   | ZPC15/466186-015 Captain                       |
|  |                              | PFOA-Free stain resistant              | ZPC16/466186-016 Aura                          |
|  |                              | Acrylic Backing                        | ZPC17/466186-017 Coastal                       |
|  |                              | ZLL01/466469-001 Opossum               | ZPC18/466186-018 Fog                           |
|  |                              | ZLL02/466469-002 Foundation            | ZPC19/466186-019 Coal                          |
|  |                              | ZLL03/466469-003 Naval                 | ZPC21/466186-021 Mulberry                      |
|  |                              | ZLL04/466469-004 Buoyant               | ZPC24/466186-024 Flame                         |
|  |                              | ZLL05/466469-005 Mockingbird           | ZPC26/466186-026 Tumbleweed                    |
|  |                              | ZLL06/466469-006 Dynasty               | ZPC29/466186-029 Subtle                        |
|  |                              | ZLL07/466469-007 Zori                  | ZPC30/466186-030 Buff                          |
|  |                              | ZLL08/466469-008 Wildfire              |  |
|  |                              | ZLL09/466469-009 Floral                |  |
|  |                              | ZLL10/466469-010 Penguin               |  |
|  |                              |  | <i>Price category F continued on next page</i> |
| Instill – Maharam                      | Keen - Maharam               |  |  |
| Ancillary/Seating                      | Seating                      |  |  |
| 54” wide                               | 54” wide                     |  |  |
| 100% polyurethane                      | 61% polyester                |  |  |
| Ink-resistant protective top coat      | 39% polyolefin               |  |  |
| Polyester backing                      | PFOA-Free stain resistant    |  |  |
| 74M01/466351-001 Page                  | Acrylic backing              |  |  |
| 74M02/466351-002 Limestone             | 89N01/466433-001 Gaur        |  |  |
| 74M03/466351-003 Bobwhite              | 89N02/466433-002 Lock        |  |  |
| 74M04/466351-004 Loafer                | 89N03/466433-003 Elk         |  |  |
| 74M07/466351-007 Shaker                | 89N04/466433-004 Oatmeal     |  |  |
| 74M08/466351-008 Doe                   | 89N05/466433-005 Lakefront   |  |  |
| 74M09/466351-009 Ride                  | 89N06/466433-006 Argent      |  |  |
| 74M10/466351-010 Squire                | 89N07/466433-007 Coyote      |  |  |
| 74M11/466351-011 Tannin                | 89N08/466433-008 Eventide    |  |  |
| 74M12/466351-012 Vitis                 | 89N09/466433-009 Canal       |  |  |
| 74M14/466351-014 Quail                 | 89N10/466433-010 Rosemary    |  |  |
| 74M15/466351-015 Brittanica            | 89N11/466433-011 Herb        |  |  |
| 74M16/466351-016 Narwhal               | 89N12/466433-012 Ruby        |  |  |
| 74M18/466351-018 Stowaway              | 89N13/466433-013 Loganberry  |  |  |



# Textile Colors

continued

## GSA

### Price Category F

continued

### Price Category G

### Price Category H

Appendix: Textile Colors

#### Scuba - Maharam

|                            |
|----------------------------|
| Ancillary                  |
| 54" wide                   |
| 100% polyurethane          |
| V9B1/464930-001 Vanilla    |
| V9B5/464930-005 Chinchilla |
| V9B6/464930-006 Mahogany   |
| V9B7/464930-007 Jet        |
| V9B8/464930-008 Charcoal   |
| V9B9/464930-009 Dolphin    |
| V9BA/464930-010 Drizzle    |
| V9BC/464930-012 Conifer    |
| V9BD/464930-013 Bottle     |
| V9BF/464930-015 Tourmaline |
| V9BG/464930-016 Sapphire   |
| V9BH/464930-017 Electric   |
| V9BL/464930-020 Cabernet   |
| V9BM/464930-021 Brick      |
| V9BN/464930-022 Coral      |
| V9BP/464930-023 Autumn     |

#### Strum - Maharam

|                                 |
|---------------------------------|
| Seating                         |
| 54" wide                        |
| 100% polyurethane               |
| with silver-based antimicrobial |
| Z3301/466122-001 Overcast       |
| Z3302/466122-002 Ridge          |
| Z3304/466122-004 Pigeon         |
| Z3307/466122-007 Bur            |
| Z3308/466122-008 Abalone        |
| Z3312/466122-012 Lemongrass     |

#### Compound - Maharam

|                               |
|-------------------------------|
| Seating                       |
| 54" wide                      |
| 100% polyurethane             |
| silane-based antimicrobial    |
| ZC201/466196-001 Quartz       |
| ZC203/466196-003 Weathered    |
| ZC204/466196-004 Cliff        |
| ZC205/466196-005 Espresso     |
| ZC206/466196-006 Smolder      |
| ZC207/466196-007 Blaze        |
| ZC208/466196-008 Mandarin     |
| ZC209/466196-009 Maple        |
| ZC210/466196-010 Perennial    |
| ZC211/466196-011 Mountainside |
| ZC212/466196-012 Tundra       |
| ZC213/466196-013 Manatee      |
| ZC214/466196-014 Marine       |
| ZC215/466196-015 Twilight     |
| ZC216/466196-016 Shelter      |
| ZC217/466196-017 Vessel       |
| ZC218/466196-018 Smoke        |
| ZC219/466196-019 Fog          |

#### Gild - Maharam

|                                   |
|-----------------------------------|
| Ancillary/Seating                 |
| 54" wide                          |
| 100% non-phthalate vinyl          |
| Ink-resistant protective top coat |
| Polyester backing                 |
| 8AR01/466432-005 Grapevine        |
| 8AR02/466432-009 Frosting         |
| 8AR03/466432-007 Smokey           |
| 8AR04/466432-003 Skylight         |
| 8AR05/466432-011 Sandstone        |
| 8AR06/466432-004 Hurricane        |
| 8AR07/466432-002 Wreath           |
| 8AR08/466432-001 Rainforest       |
| 8AR09/466432-012 Fudge            |
| 8AR10/466432-010 Lantern          |
| 8AR11/466432-006 Planet           |
| 8AR12/466432-008 Reflection       |

#### Sudden - Maharam

|                      |
|----------------------|
| Ancillary            |
| 54" wide             |
| 100% polyurethane    |
| ZSD02/463000-002 002 |
| ZSD03/463000-003 003 |
| ZSD05/463000-005 005 |
| ZSD06/463000-006 006 |
| ZSD07/463000-007 007 |
| ZSD08/463000-008 008 |
| ZSD09/463000-009 009 |
| ZSD10/463000-010 010 |
| ZSD11/463000-011 011 |
| ZSD13/463000-013 013 |
| ZSD15/463000-015 015 |
| ZSD16/463000-016 016 |
| ZSD17/463000-017 017 |
| ZSD18/463000-018 018 |
| ZSD19/463000-019 019 |
| ZSD20/463000-020 020 |
| ZSD24/463000-024 024 |
| ZSD27/463000-027 027 |
| ZSD36/463000-036 036 |

#### Circles - Maharam

|                          |
|--------------------------|
| Ancillary/Seating        |
| 55" wide                 |
| 70% cotton               |
| 30% polyester            |
| ZT01/458310-001 Khaki    |
| ZT02/458310-002 Fatigue  |
| ZT03/458310-003 Document |
| ZT04/458310-004 Engine   |

#### Dot Pattern - Maharam

|                          |
|--------------------------|
| Ancillary/Seating        |
| 55" wide                 |
| 71% cotton               |
| 29% polyester            |
| ZK01/458300-001 Document |
| ZK02/458300-002 Taupe    |
| ZK04/458300-004 Red      |
| ZK05/458300-005 Navy     |

#### Regatta - Maharam

|                             |
|-----------------------------|
| Ancillary                   |
| 54" wide                    |
| 65% solution-dyed acrylic   |
| 35% solution-dyed polyester |
| ZRT01/466189-001 Drift      |
| ZRT02/466189-002 Parasol    |
| ZRT04/466189-004 Swell      |

#### Small Dot Pattern - Maharam

|                          |
|--------------------------|
| Ancillary/Seating        |
| 55" wide                 |
| 71% cotton               |
| 29% polyester            |
| ZL01/458320-001 Document |
| ZL02/458320-002 Sand     |
| ZL03/458320-003 Khaki    |
| ZL04/458320-004 Taupe    |
| ZL05/458320-005 Charcoal |
| ZL06/458320-006 Document |
| Reverse                  |
| ZL07/458320-007 Red      |
| ZL08/458320-008 Yellow   |
| ZL09/458320-009 Green    |

Textile Colors

continued

GSA

| Price Category I   | Price Category J-O                 | Price Category P  | Price Category Q   |
|--|------------------------------------|---|--|
| <div>Cursive – Maharam</div> <div>Seating</div> <div>54” wide</div> <div>67% solution-dyed acrylic</div> <div>33% solution-dyed polyester</div> <div>PFOA-Free stain resistant</div> <div>7CW01/466335-001 Fast</div> <div>7CW03/466335-003 Beachcomb</div> <div>7CW05/466335-005 Swift</div> <div>7CW06/466335-006 Jetstream</div> <div>7CW07/466335-007 Inkwell</div> <div>7CW08/466335-008 Rubber</div> | No fabrics available at this time. | <div>Layers Vineyard Small – Maharam</div> <div>Ancillary</div> <div>52” wide</div> <div>92% wool</div> <div>5% polyester</div> <div>3% nylon</div> <div>ZLS01/465920-001 Ochre/White</div> <div>ZLS02/465920-002 Scarlet/Peony</div> <div>ZLS03/465920-003 Taupe/Violet</div> <div>ZLS04/465920-004 Jade/Turquoise</div> <div>ZLS05/465920-005 Ginger/Rose</div> | <div>Brushed Camel – Maharam</div> <div>Ancillary</div> <div>58” wide</div> <div>100% baby camel hair</div> <div>ZBA01/465977-001 Albino</div> <div>ZBA02/465977-002 Natural</div> |

Textile Colors

continued

GSA

Price Category R-Z

No fabrics available at this time.

Price Category 10M

| Pace Leather – Maharam      |            |
|-----------------------------|------------|
| Ancillary                   |            |
| approx. 50 sq. ft. per hide |            |
| 100% leather                |            |
| ZPA01/700011-001            | Whisper    |
| ZPA02/700011-002            | Shy        |
| ZPA03/700011-003            | Granite    |
| ZPA04/700011-004            | Misty      |
| ZPA05/700011-005            | Studio     |
| ZPA06/700011-006            | Throne     |
| ZPA07/700011-007            | Proper     |
| ZPA08/700011-008            | Huron      |
| ZPA09/700011-009            | Darkroom   |
| ZPA10/700011-010            | Bark       |
| ZPA11/700011-011            | Raspberry  |
| ZPA12/700011-012            | Sangria    |
| ZPA13/700011-013            | Admiral    |
| ZPA14/700011-014            | Juniper    |
| ZPA15/700011-015            | Regal      |
| ZPA16/700011-016            | Vapor      |
| ZPA17/700011-017            | Valley     |
| ZPA18/700011-018            | Bushel     |
| ZPA19/700011-019            | Heirloom   |
| ZPA20/700011-020            | Palomino   |
| ZPA21/700011-021            | Bamboo     |
| ZPA22/700011-022            | Saffron    |
| ZPA23/700011-023            | Tearose    |
| ZPA24/700011-024            | Canyon     |
| ZPA25/700011-025            | Bistro     |
| ZPA26/700011-026            | Toffee     |
| ZPA27/700011-027            | Rodeo      |
| ZPA28/700011-028            | Mudslide   |
| ZPA29/700011-029            | Greige     |
| ZPA30/700011-030            | Reflection |
| ZPA31/700011-031            | Pure       |
| ZPA32/700011-032            | Desert     |
| ZPA33/700011-033            | Griffin    |
| ZPA34/700011-034            | Urbane     |
| ZPA35/700011-035            | Woodrose   |





For more information about our products and services or to see a list of dealers, please visit us at [HermanMiller.com](http://HermanMiller.com) or call (800) 851 1196.

© 2025 Herman Miller, Inc., Zeeland, Michigan


#### Distribution Rights

Working together since 1956, Herman Miller and Vitra are the authentic sources of designs by Charles and Ray Eames, Alexander Girard, and George Nelson. All the designs shown in this book are protected by law. Herman Miller has obtained all rights to make and sell these designs. Also, Herman Miller holds exclusive worldwide manufacturing and distribution rights for these products with the following exceptions:

Charles and Ray Eames, George Nelson, and Alexander Girard—Worldwide distribution rights for furniture in all areas except Europe and the Middle East. For those areas, please contact Vitra.

Isamu Noguchi—Worldwide distribution rights for the Noguchi Rudder Table. Distribution rights for the Noguchi Table in North America and Central America only. For all other areas, please contact Vitra.

Magis—Exclusive distribution rights in the US and Canada. For all other areas, please contact Magis.

® HermanMiller, , Action Office, Aeron, Aside, Canvas Office Landscape, Caper, Cosm, Co/Struc, Eames, Embody, Ethospace, Exclave, Fine-Tune, FlexFront, Formcoat, Ground Cloth, Intent, Layout Studio, Lino, Maharam, Meridian, Mirra, Motia, Nelson, Pellicle, Perspectives, Plex, PostureFit, PostureFit SL, Sayl, Setu, Tu, Verus, Y-Tower and Zeph are among the registered trademarks of Herman Miller, Inc., and its owned subsidiaries.

™ AireWeave, Bubbletack, Canvas Vista, Cellular Suspension, Commend, Compass, Connect, DOT, Durawrap, Everywhere, Flex-Edge, Headway, Hopsak 2, Iota, Keyless Entry, Latitude, Lyris 2, Mora, Multiscrim, Nevi, OE1, OE1 Workspace Collection, Overlay, Renew, Stackable, Swoop, Thrive, TriFlex, Twist and Valor are among the trademarks of Herman Miller, Inc., and its owned subsidiaries.

Chemsurf® is a registered trademark of Wilsonart International.

Corian® is a registered trademark of E.I. du Pont de Nemours and Company Corporation.

FLEXNET™ is a trademark of Milliken & Company.

Floor Saver Glide® is a registered trademark of Carpin Manufacturing, Inc.

Forest Stewardship Council® is a registered trademark of the Forest Stewardship Council A.C. (FSC). We are FSC® certified (FSC® C102895).

FSC® is a registered trademark of the Forest Stewardship Council A.C. (FSC).

MicrobeCare™ is a trademark of Parasol Medical LLC.

Microsoft® and Natural® Keyboard are registered trademarks of Microsoft Corporation.

Place Textiles® is a registered trademark of Place Textiles.