

Ecophon® Akusto™ Wall C Texona & Super G

Installation Manual for WP Profile

DESIGN AND SPECIFICATIONS

Use of the Product

For use as wall-mounted absorbers, with, or instead of, a sound absorbing ceiling in order to achieve excellent acoustic performance in a space.

Size Availability (nominal)

2700mm x 600mm x 40mm
(≈106 ¼" x 23 ⅝" x 1 ½")

Surfaces

The panels are manufactured from high density fiber glass. The visible surface offers a lightly textured glass fiber fabric (Texona in 13 colors) or an impact resistant glass fiber fabric (Super G in 3 colors). The back of the panel is covered with glass tissue. The edges are painted, with the finished fabric partially wrapping around the long edges.

Accessibility

The panels are not demountable except in selected installation diagrams.

Edge Detail

Wall Panel has kerfed/beveled long edges enabling the panels to receive an internal spline. The beveled edges create a narrow groove between each panel. The short sides of the panel are square. The entire panel assembly is framed by extruded aluminum trim equipped with modular corner pieces.

Attachment

Use Ecophon Connect™ WP Profile to attach panels.

Weight

The system consists of Ecophon Wall Panel panels and the Ecophon Connect WP Profile with an approximate system weight of 1.02 lb/SF.

Cleaning

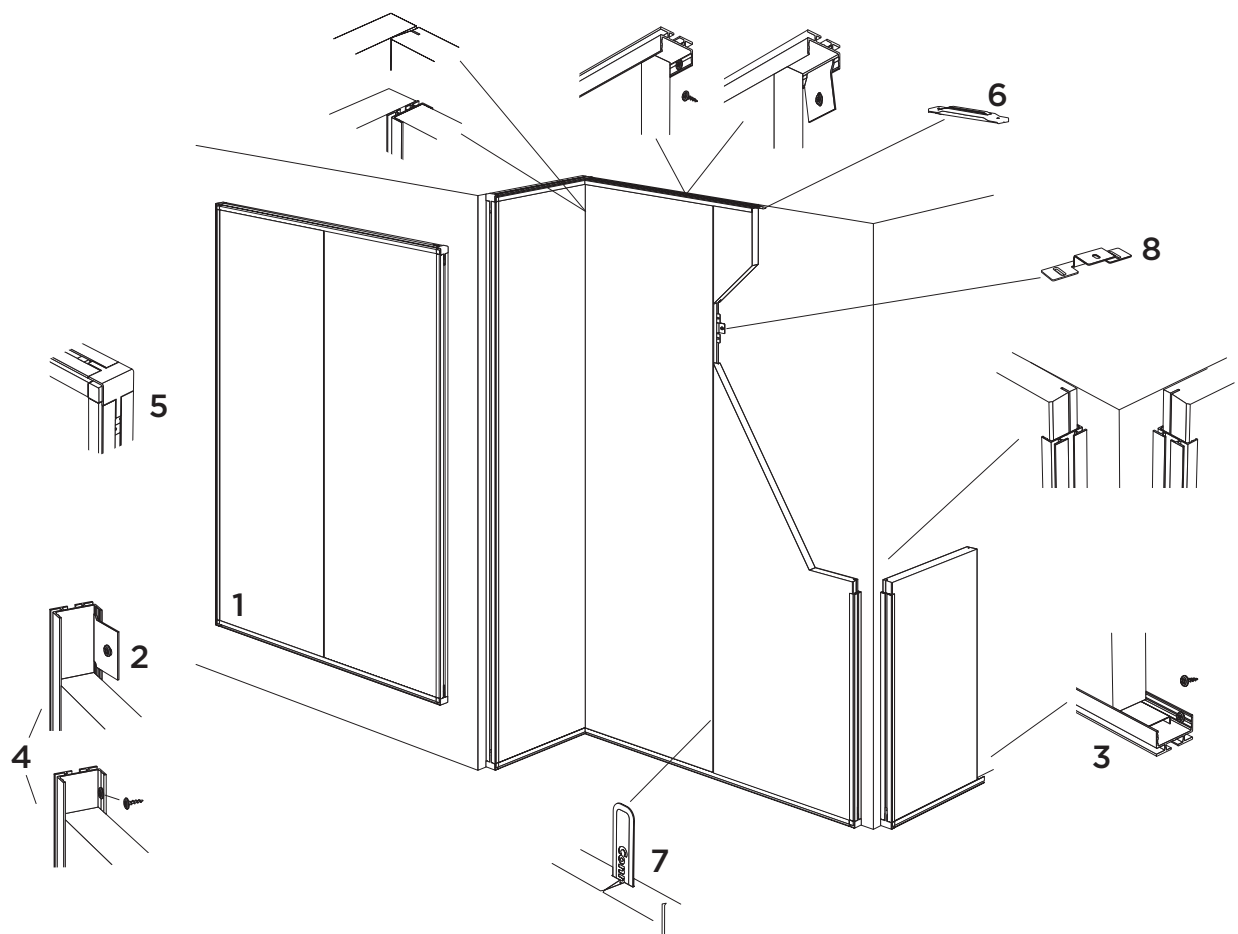
Daily dusting, vacuum cleaning and weekly wet wiping (Super G surfaces). Weekly dusting and vacuum cleaning (Texona surfaces).

Fire Performance

Panels have been tested according to ASTM E84 (Flame Spread ≤ 25) and ASTM E1263 (Smoke Development ≤ 50).

Installation for Ecophon® Akusto™ Wall C Texona & Super G

Read the entire manual before installing.

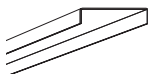


1. Ecophon Akusto Wall C Texona or Super G

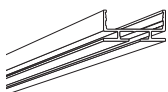
2. Alt. Connect Fixing bracket



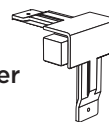
3. Connect WP Space bar, L=2400



4. Connect WP Profile, L=2687



5. Connect WP External corner



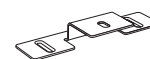
6. Connect WP profile splice



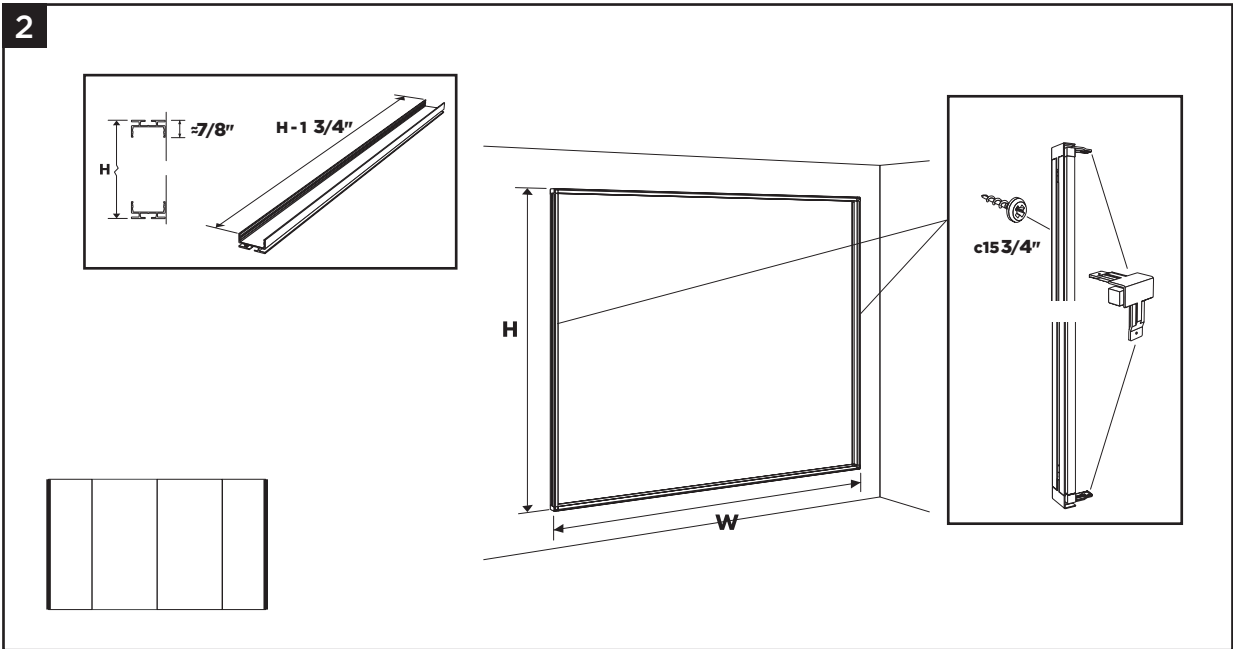
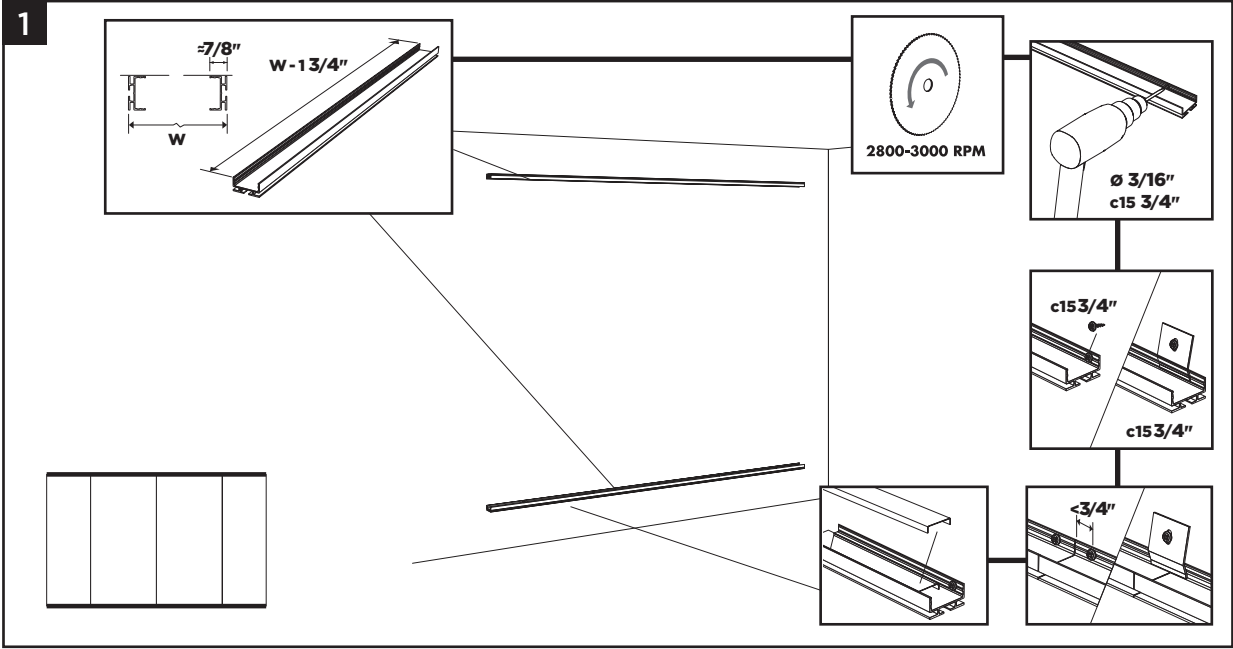
7. Connect Spline



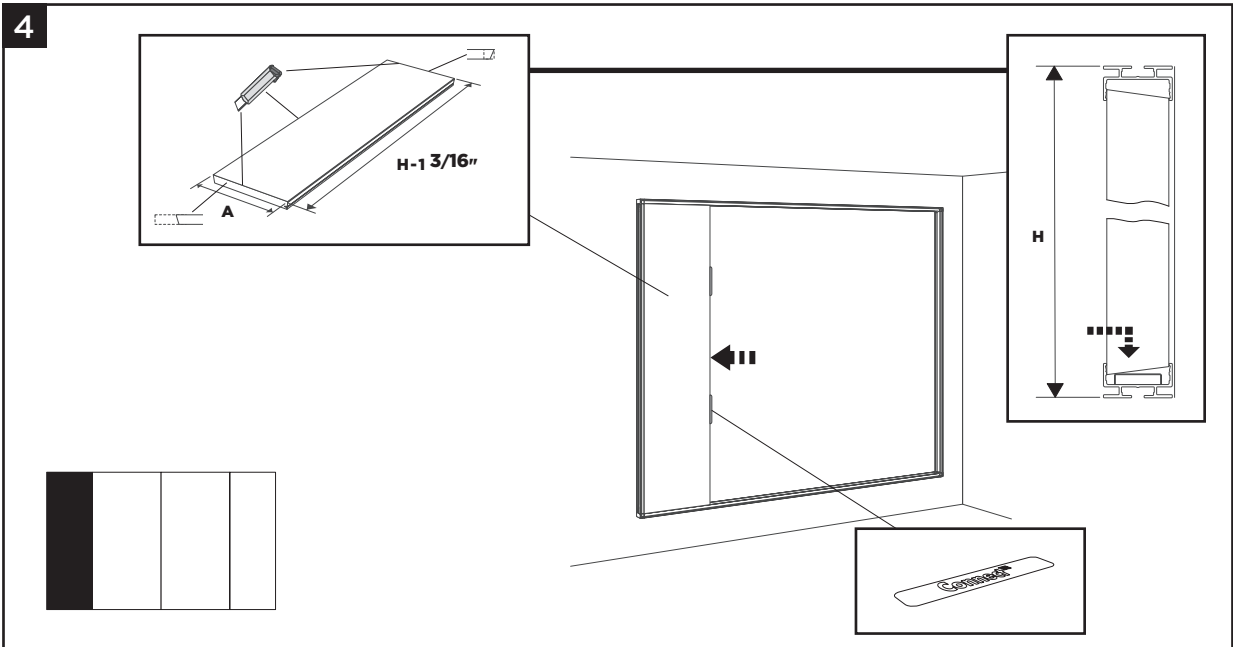
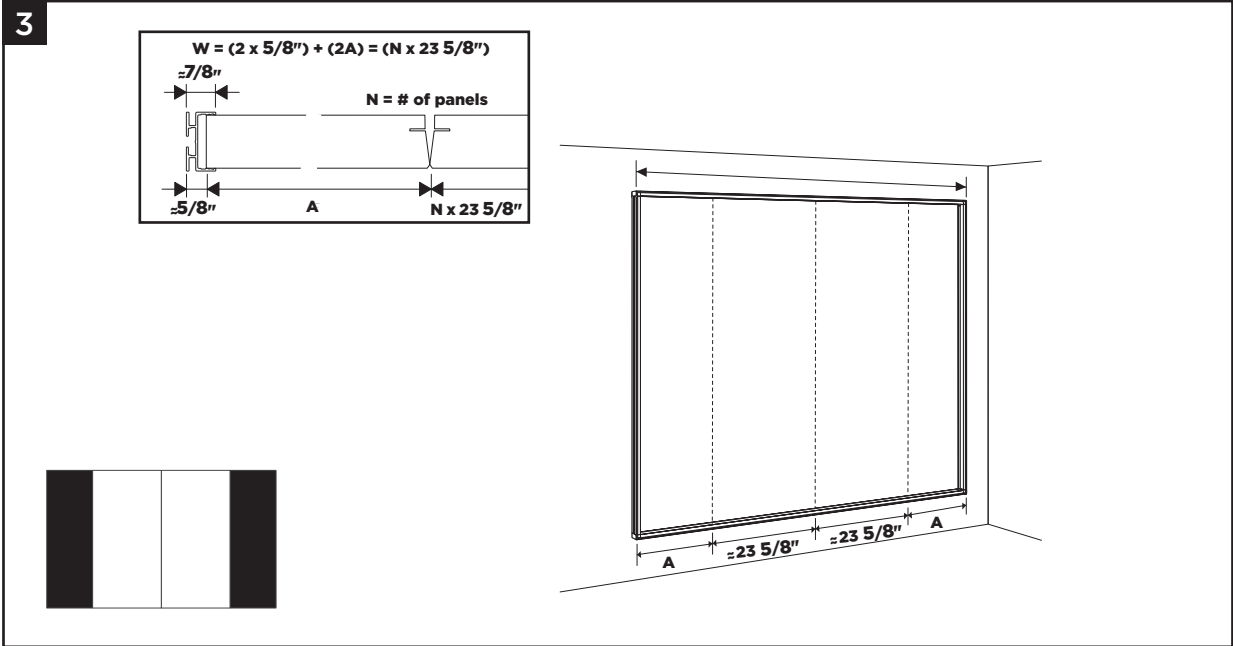
8. Connect Fixing plate



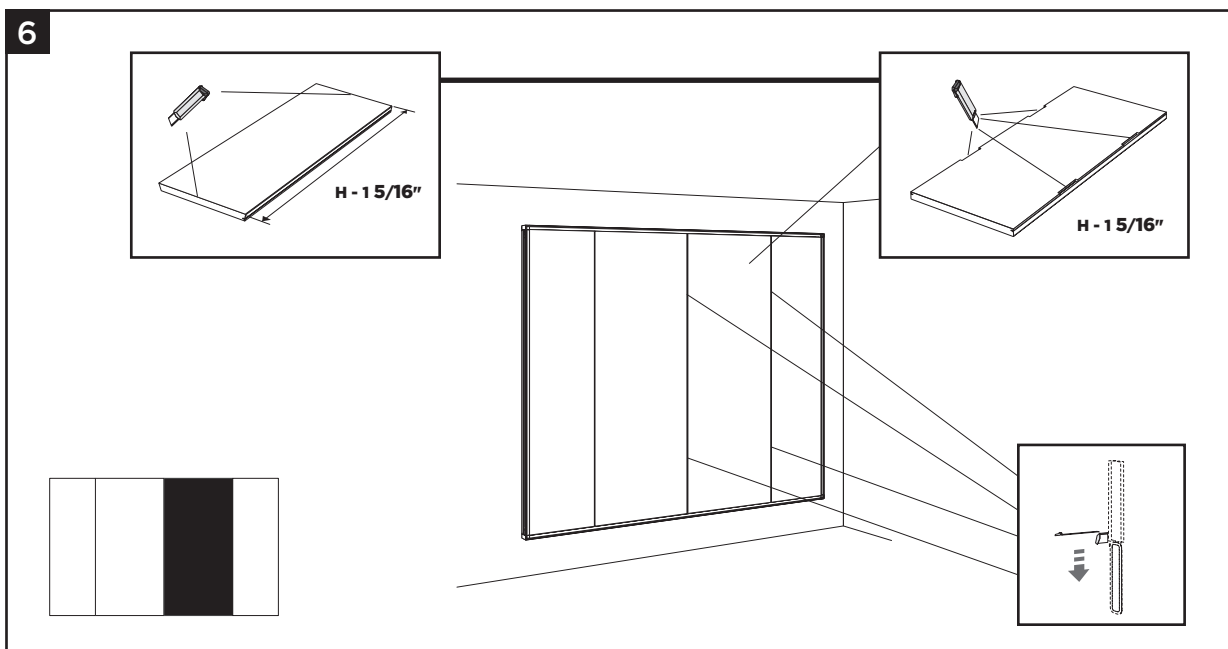
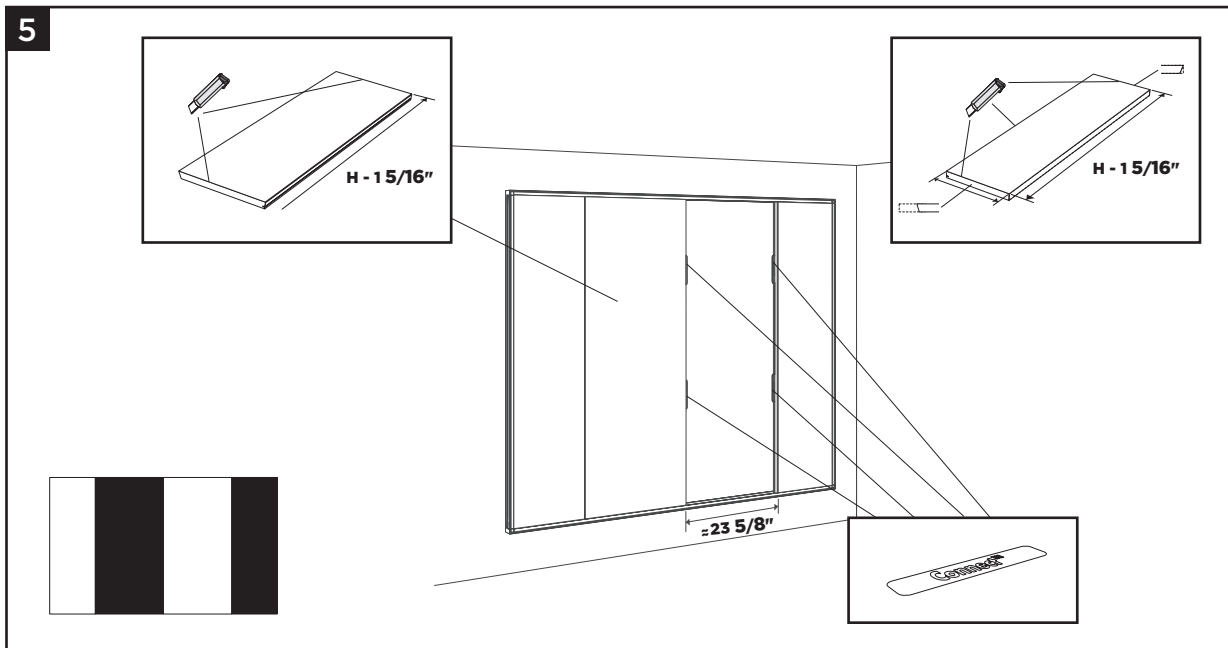
Installation for Ecophon® Akusto™ Wall C Texona & Super G
— Vertical Installation



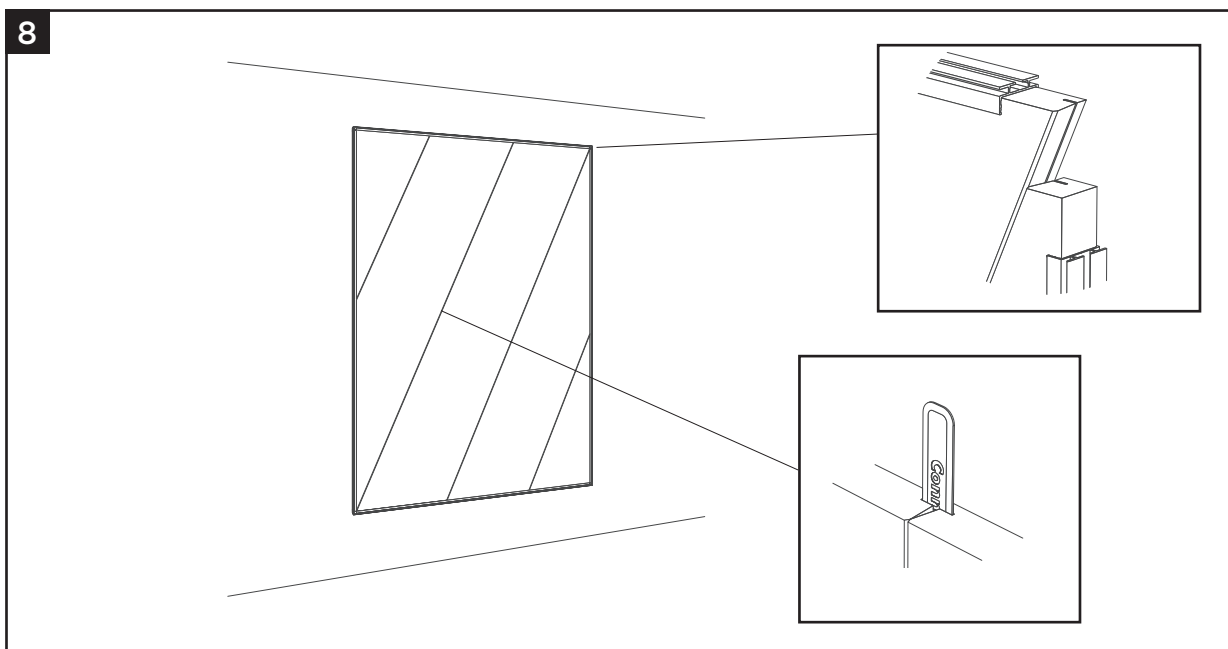
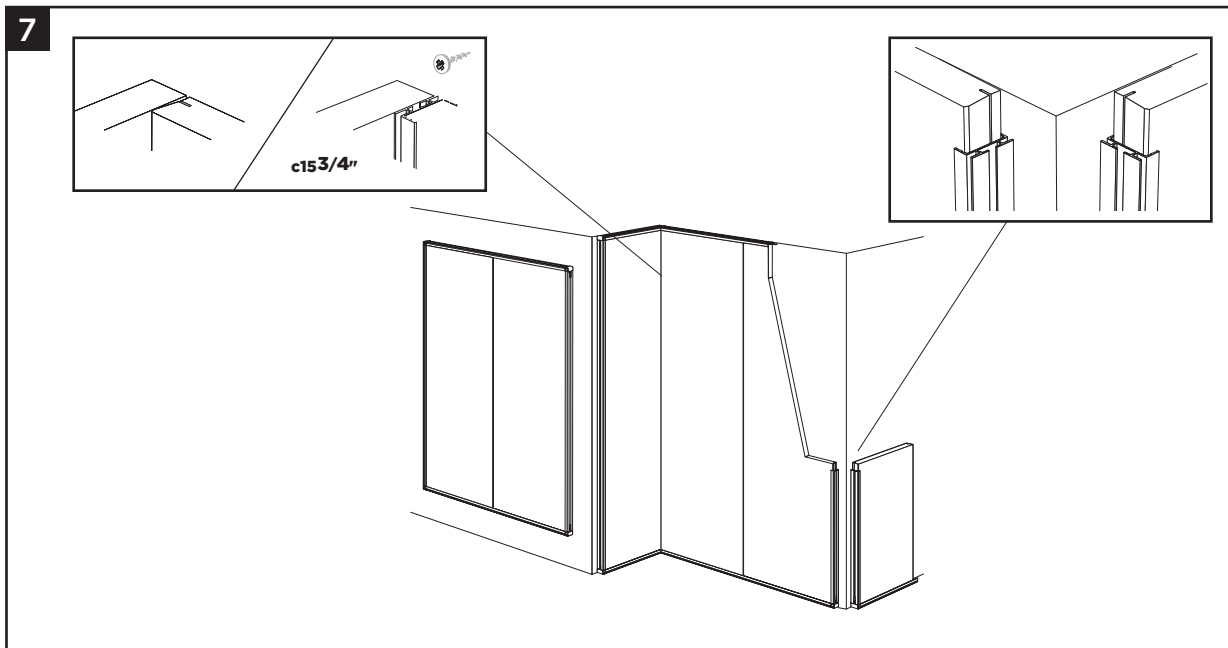
Installation for Ecophon® Akusto™ Wall C Texona & Super G
— Vertical Installation



Installation for Ecophon® Akusto™ Wall C Texona & Super G — Vertical Installation

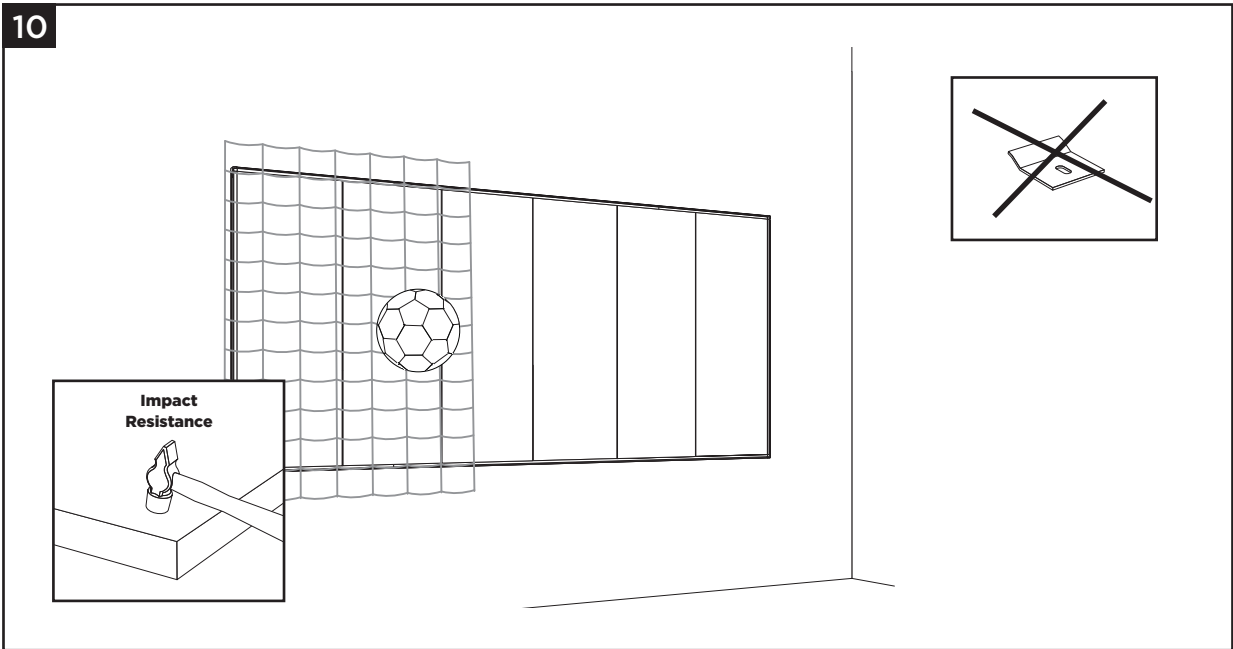
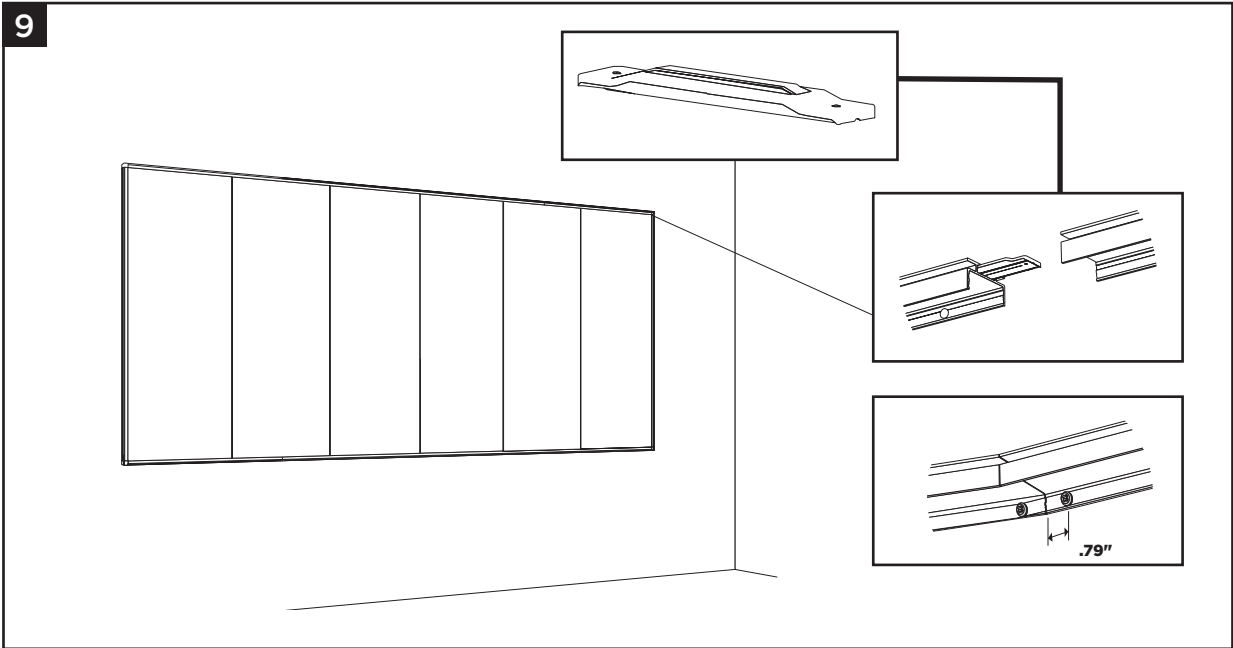


Installation for Ecophon® Akusto™ Wall C Texona & Super G — Vertical Installation



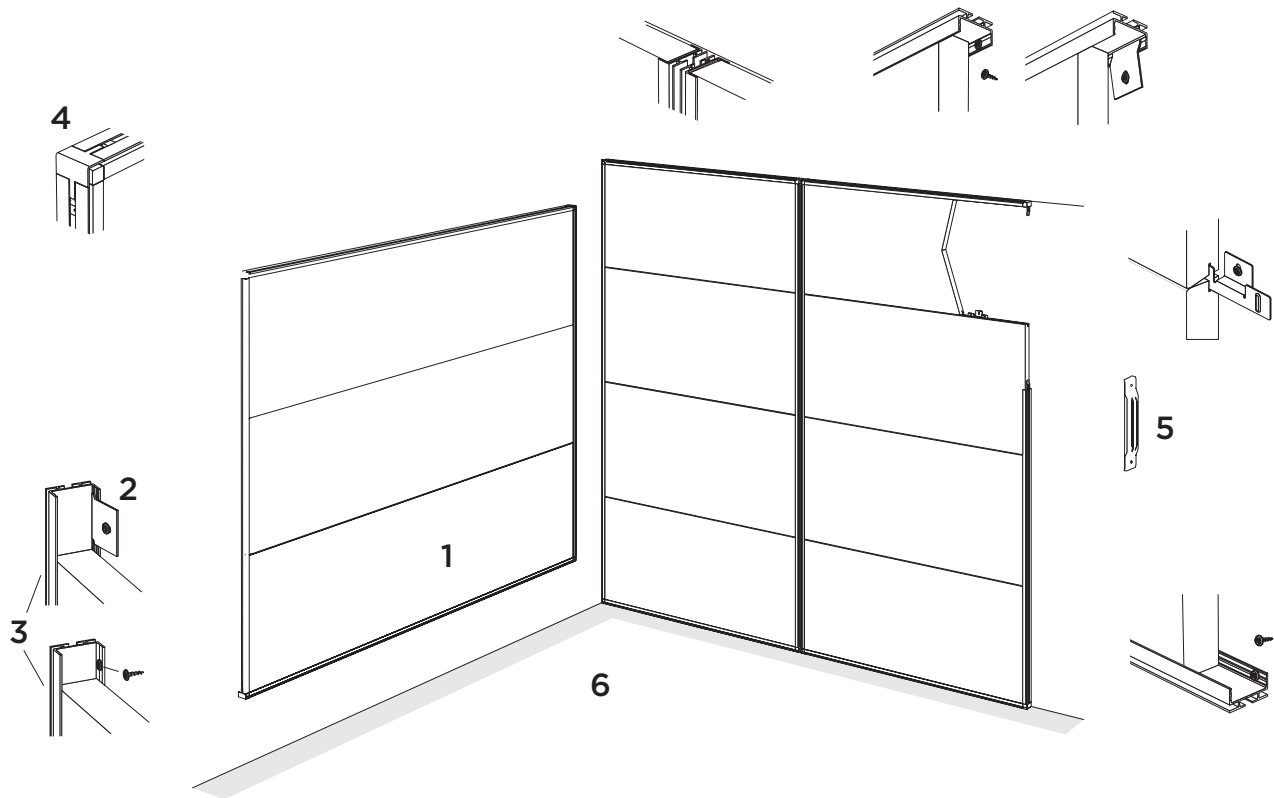
Installation for Ecophon® Akusto™ Wall C Texona & Super G
— Vertical Installation

B>106 5/16"



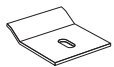
Installation for Ecophon® Akusto™ Wall C Texona & Super G — Horizontal Installation

Read the entire manual before installing.

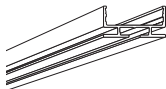


1. Ecophon Akusto Wall C Texona or Super G

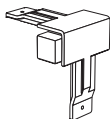
2. Alt. Connect Fixing Bracket



3. Connect WP Profile, L=2687



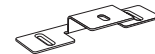
4. Connect WP External Corner



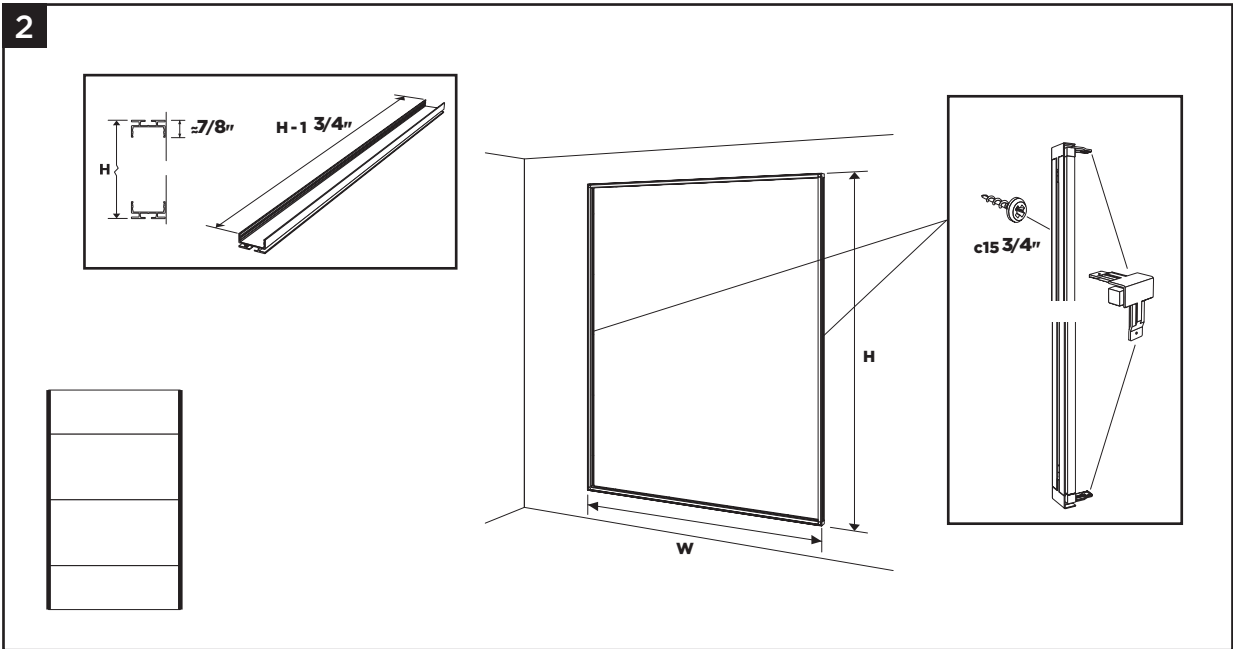
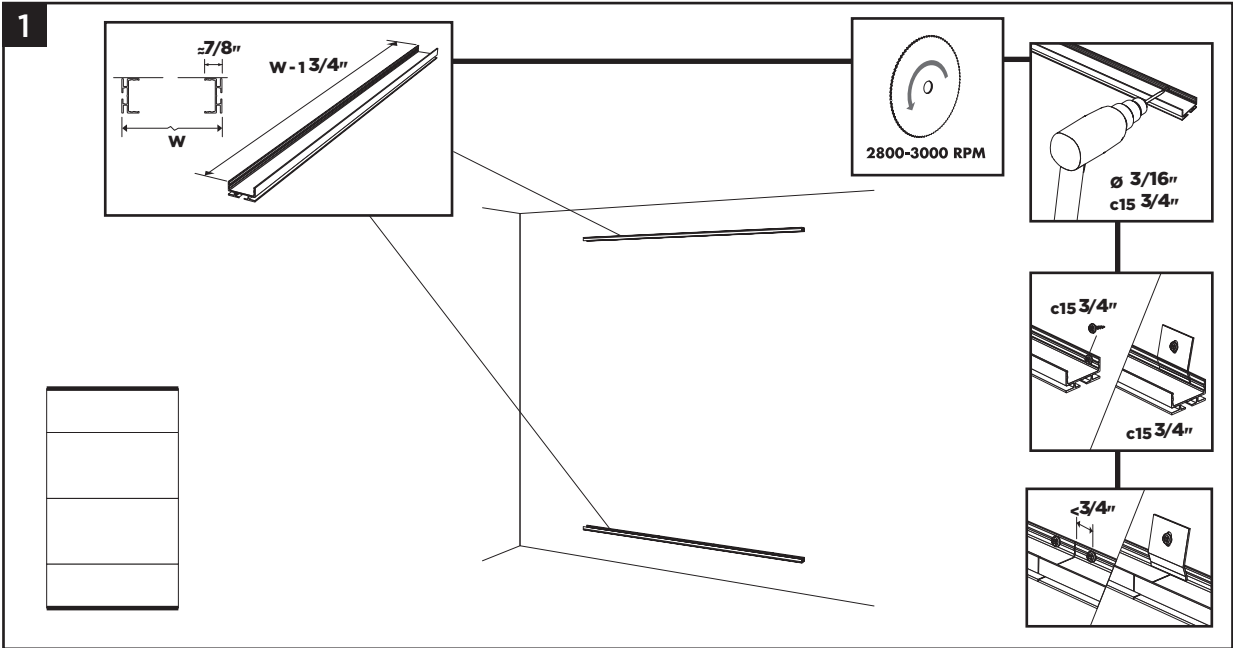
5. Connect WP Profile Splice



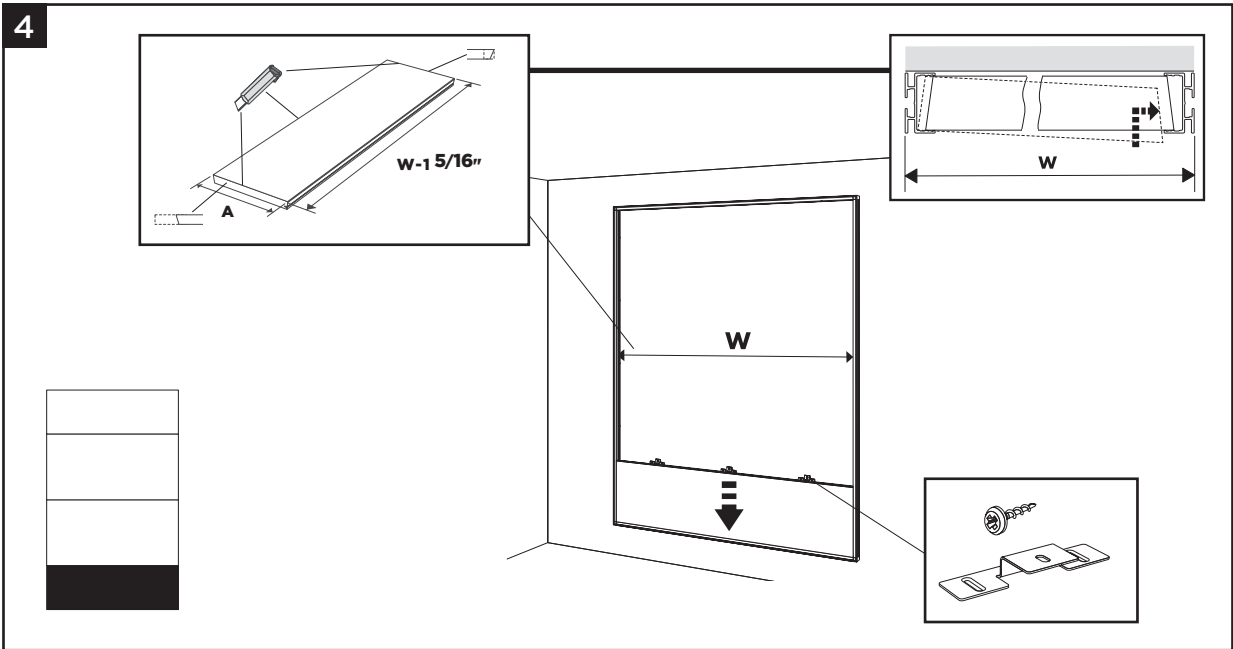
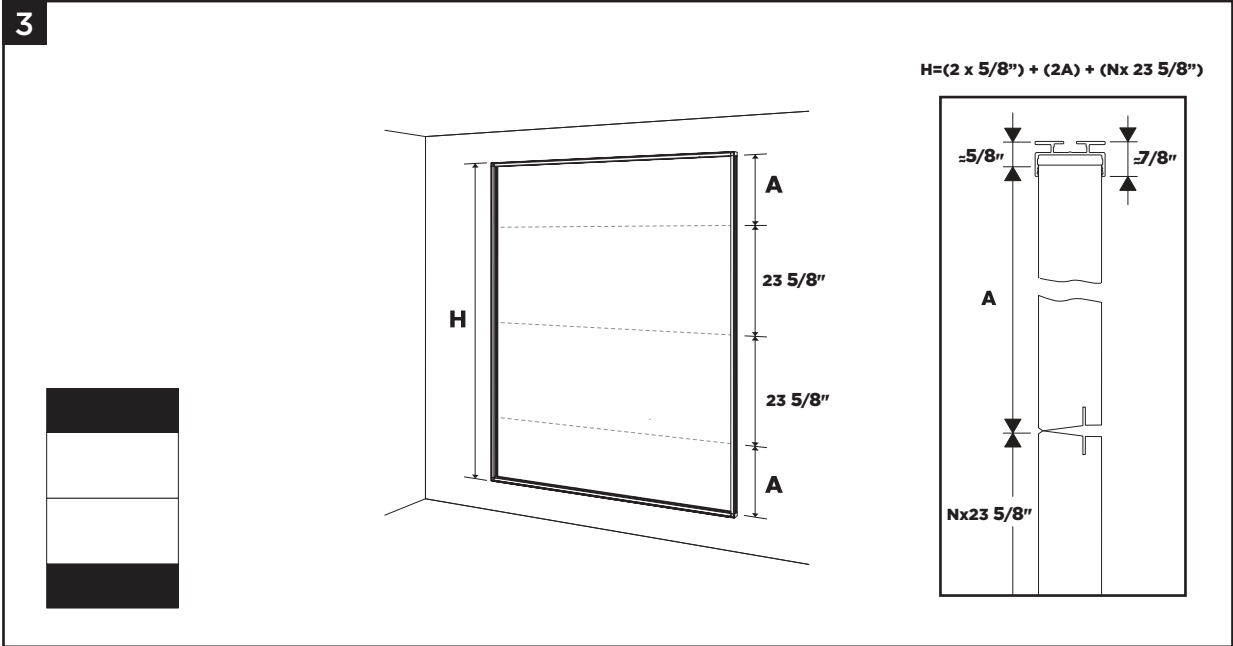
6. Connect Fixing Plate



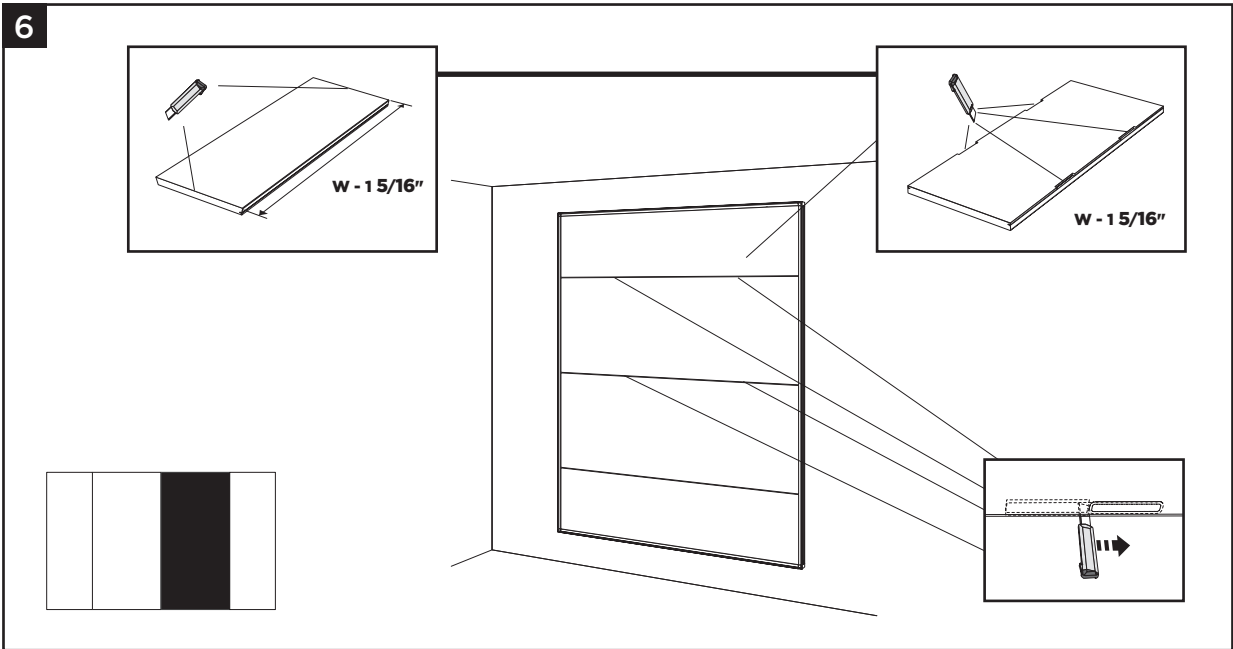
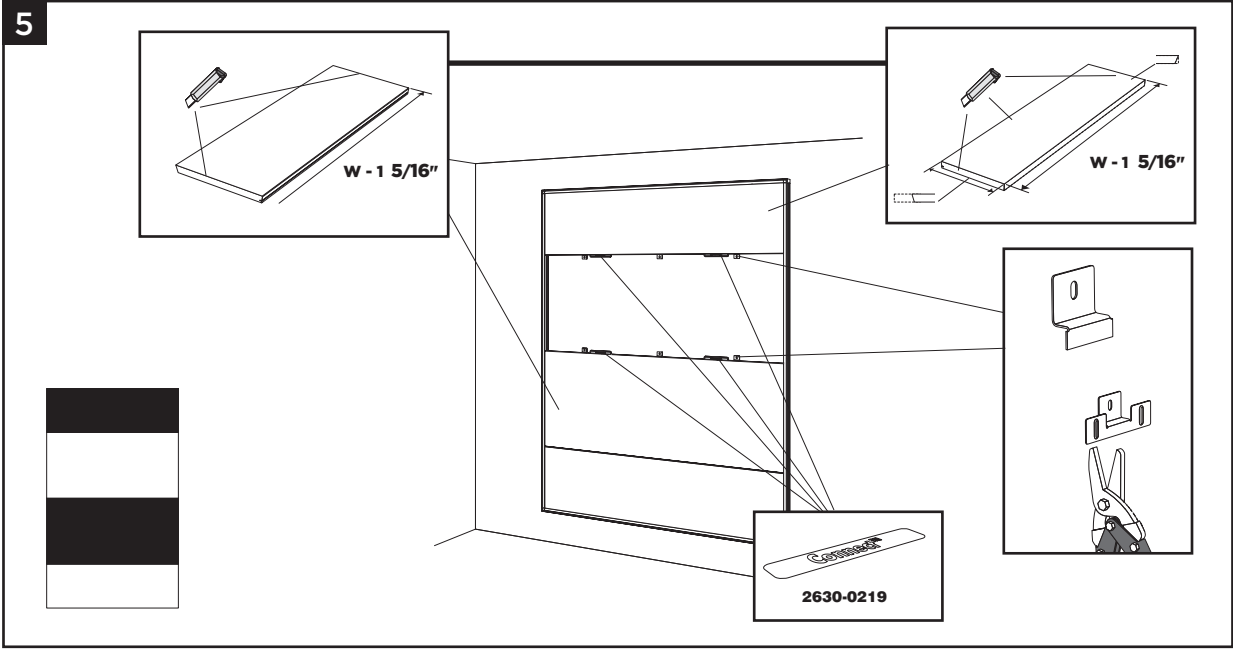
Installation for Ecophon® Akusto™ Wall C Texona & Super G
— Horizontal Installation



Installation for Ecophon® Akusto™ Wall C Texona & Super G
— Horizontal Installation



Installation for Ecophon® Akusto™ Wall C Texona & Super G
— Horizontal Installation



Installation for Ecophon® Akusto™ Wall C Texona & Super G — Horizontal Installation

