

6C

Designed by Aaron Duke



KEILHAUER

Continuity as a physical expression

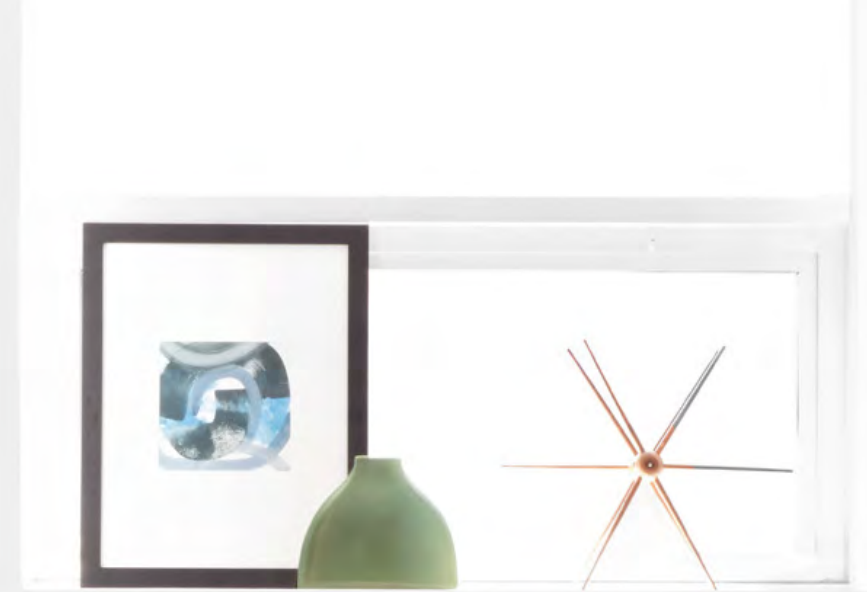
6C's continuous form conveys calm; in today's frenetic office environment, calm is a good feeling to start any meeting with.

KEILHAUER



Light in Scale

With a mesh back and slight profile, 6C maintains a sense of openness in confined meeting rooms. A slight forward lean encourages engagement and collaboration.



KEILHAUER

Affordable and Versatile

A variety of options make 6C accessible for clients of varying size and budget.

KEILHAUER



Meet & Task Comfortably

Continuous lines mirror that of the human body. Knee tilt and adjustable lumbar models support focus and work sessions in the office, hotel room and private studio.

KEILHAUER



Conference Chairs



Low Back Loop Arm



Mid Back Loop Arm



Armless &
Adjustable
Lumbar



Adjustable
Arms &
Lumbar

KEILHAUER

Task Chairs



Knee Tilt,
Adjustable
Lumbar, Armless



Knee Tilt,
Adjustable
Arms &
Lumbar

KEILHAUER

Stools



Low Back Loop Arm



Mid Back Loop Arm



Armless &
Adjustable
Lumbar



Adjustable
Arms &
Lumbar

KEILHAUER

Arm/Base Options



Warm Grey Nylon



Black Nylon



Warm Grey Nylon

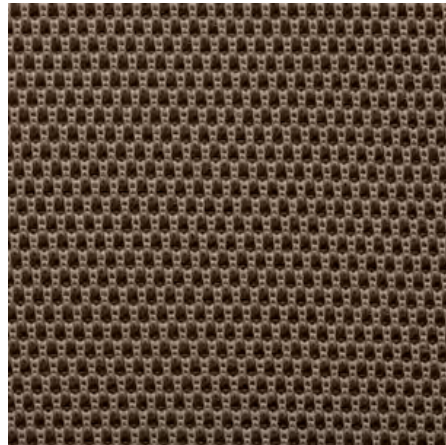
Black Nylon



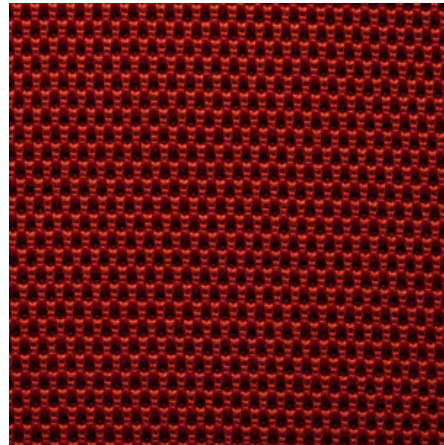
Polished Aluminum

KEILHAUER

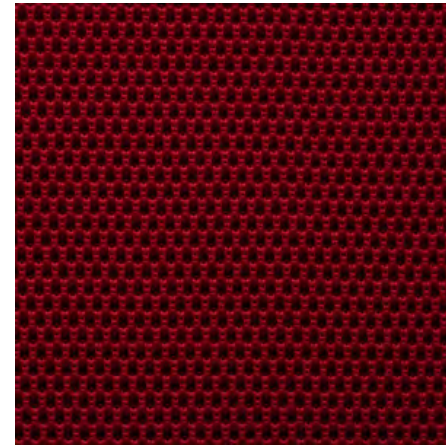
6C Mesh Back Colors



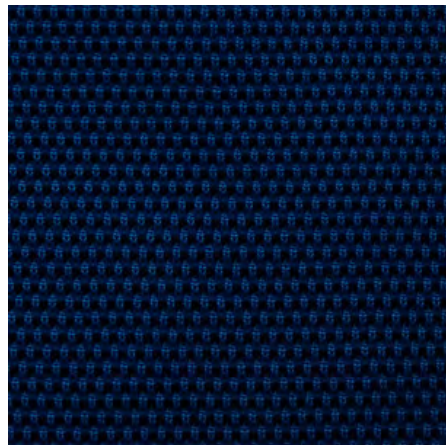
Cashew



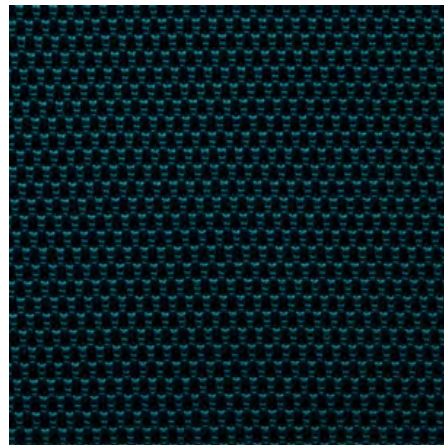
Tangerine



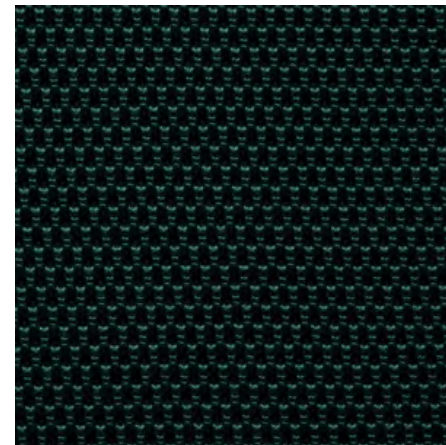
Poppy



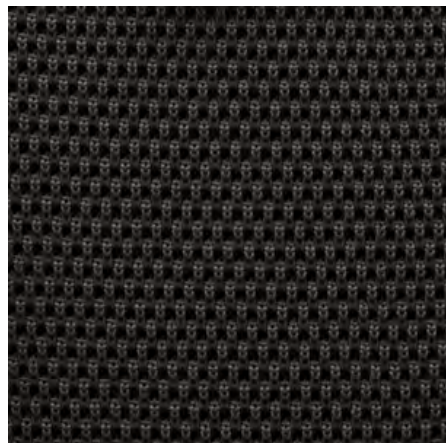
Blueberry



Teal



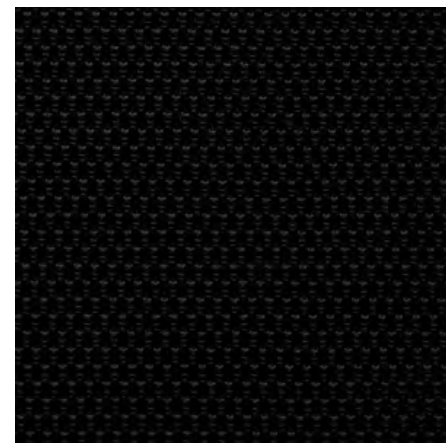
Fiddlehead



Warm Grey

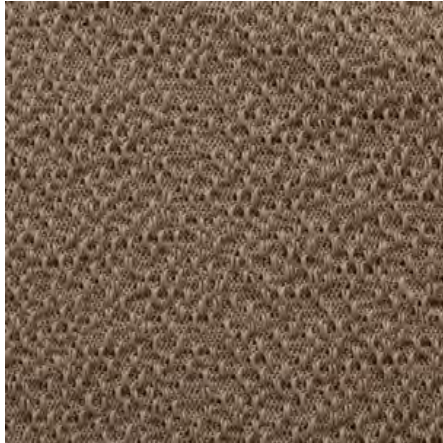


Twilight

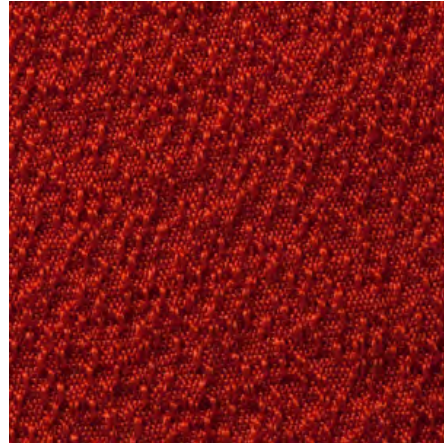


Black

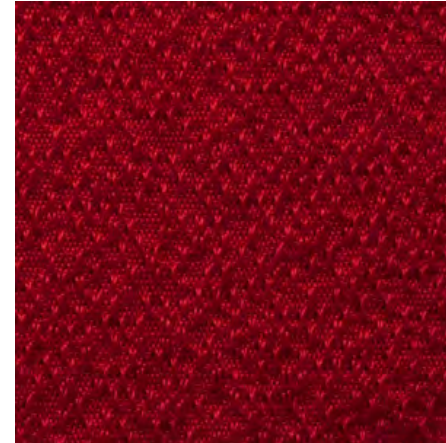
6C Knit Seat Colors



Cashew



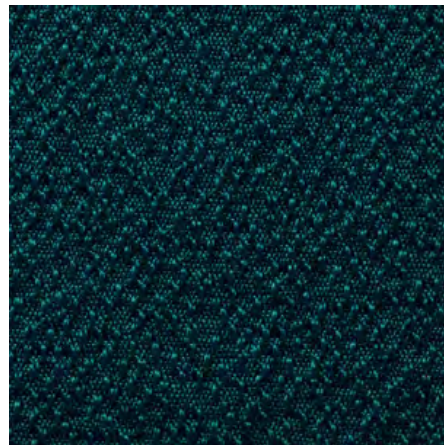
Tangerine



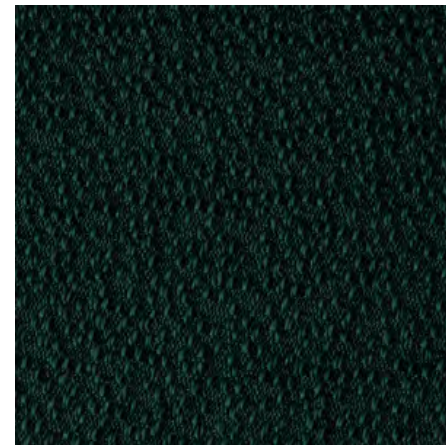
Poppy



Blueberry



Teal



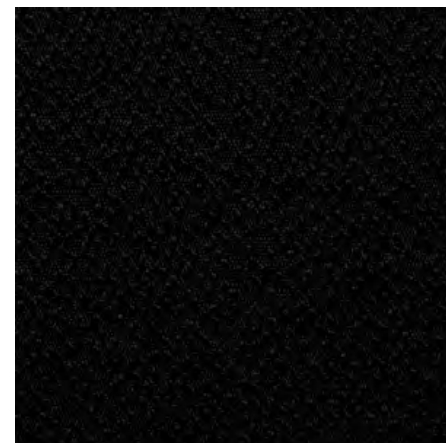
Fiddlehead



Warm Grey



Twilight



Black

KEILHAUER





KEILHAUER

KEILHAUER





KEILHAUER