

KEILHAUER

Spec Sheet

Boxcar



Boxcar Specifications

Design by EOOS
Made by Keilhauer

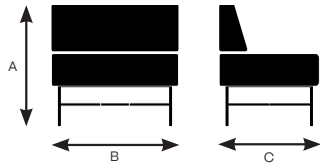
| Seat | 4301 Chair armless | 4311 Chair with arms |
|----------------|-----------------------|-------------------------|
| Seat Height | 16.25" | 16.25" |
| Seat Width | 37.5" | 28" |
| Seat Depth | 21.25" | 21.25" |
| Seat Pan Angle | 4° | 4° |

| Back | | |
|------------------------|--------|--------|
| Backrest Height | 12.25" | 12.25" |
| Backrest Width | 37.5" | 26.75" |
| Backrest Angle | 111° | 111° |
| Backrest to Seat Angle | 107° | 107° |

| Arms | | |
|------------------------|-----|--------|
| Arm Height | N/A | 11.5" |
| Armrest Length | N/A | 21" |
| Armrest Width | N/A | 5" |
| Armrest Set Back | N/A | 4" |
| Width Between Armrests | N/A | 26.75" |
| Arm Height from Floor | N/A | 26.75" |

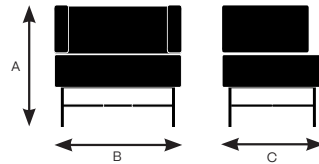
Model 4301

| | |
|-------------------|--------|
| A. Overall Height | 26.75" |
| B. Overall Width | 37.5" |
| C. Overall Depth | 29.5" |



Model 4311

| | |
|-------------------|--------|
| A. Overall Height | 26.75" |
| B. Overall Width | 37.5" |
| C. Overall Depth | 29.5" |



Construction Material

| | |
|-------------------------|---|
| Upholstered Seat & Back | Plywood & CFC free polyurethane flex foam |
| Legs | Steel |
| Glides | Polypropylene |

KEILHAUER

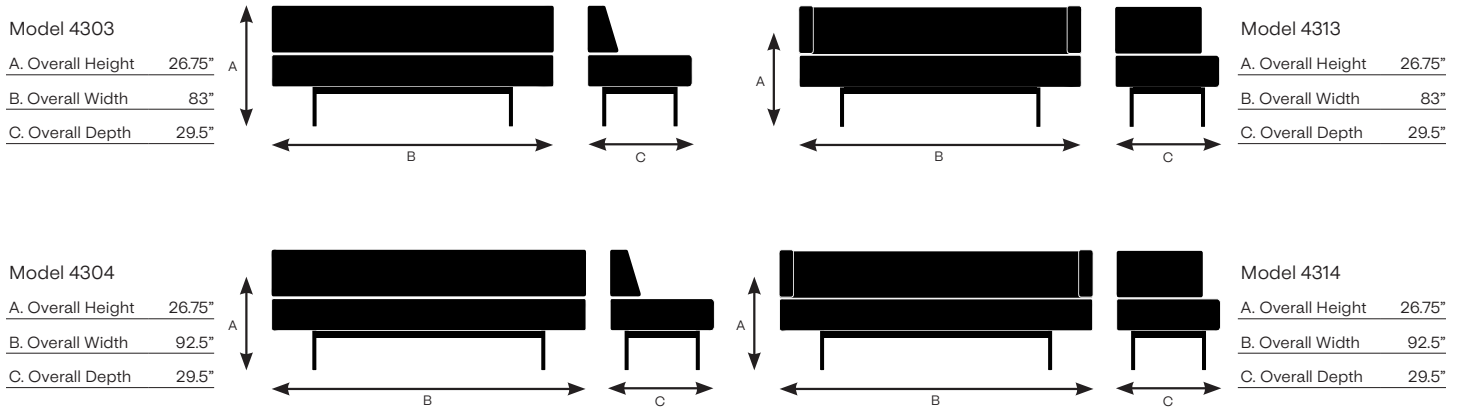
Boxcar Specifications

Design by EOOS
Made by Keilhauer

| Seat | 4303 Small sofa armless | 4313 Small sofa with arms | 4304 Large sofa armless | 4314 Large sofa with arms |
|----------------|----------------------------|------------------------------|----------------------------|------------------------------|
| Seat Height | 16.25" | 16.25" | 16.25" | 16.25" |
| Seat Width | 83" | 71.25" | 92.75" | 81" |
| Seat Depth | 21.25" | 21.25" | 21.25" | 21.25" |
| Seat Pan Angle | 4° | 4° | 4° | 4° |

| Back | 4303 Small sofa armless | 4313 Small sofa with arms | 4304 Large sofa armless | 4314 Large sofa with arms |
|------------------------|----------------------------|------------------------------|----------------------------|------------------------------|
| Backrest Height | 12.25" | 12.25" | 12.25" | 12.25" |
| Backrest Width | 83" | 70" | 92.5" | 79.5" |
| Backrest Angle | 111° | 111° | 111° | 111° |
| Backrest to Seat Angle | 107° | 107° | 107° | 107° |

| Arms | 4303 Small sofa armless | 4313 Small sofa with arms | 4304 Large sofa armless | 4314 Large sofa with arms |
|------------------------|----------------------------|------------------------------|----------------------------|------------------------------|
| Arm Height | N/A | 11.5" | N/A | 11.5" |
| Armrest Length | N/A | 21" | N/A | 21" |
| Armrest Width | N/A | 5" | N/A | 5" |
| Armrest Set Back | N/A | 4" | N/A | 4" |
| Width Between Armrests | N/A | 70" | N/A | 79.5" |
| Arm Height from Floor | N/A | 26.75" | N/A | 26.75" |



Construction Material

| | |
|-------------------------|---|
| Upholstered Seat & Back | Plywood & CFC free polyurethane flex foam |
| Legs | Steel |
| Glides | Polypropylene |

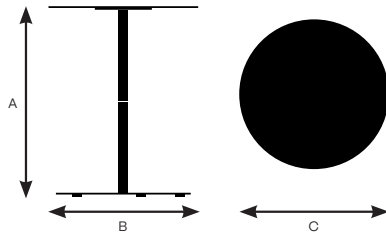
Boxcar Specifications

Design by EOOS
Made by Keilhauer

| | 4381 High round table with black base | 4382 Low round table with black base |
|-----------------|--|---|
| Table Top Width | 15.75" | 19" |
| Table Top Depth | 15.75" | 19" |

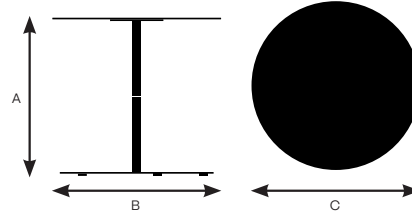
Model 4381

| | |
|-------------------|--------|
| A. Overall Height | 20" |
| B. Overall Width | 15.75" |
| C. Overall Depth | 15.75" |



Model 4382

| | |
|-------------------|--------|
| A. Overall Height | 17.75" |
| B. Overall Width | 19" |
| C. Overall Depth | 19" |



Construction Material

| | |
|-------------|---|
| Table Top | Laminated/Veneer 1" Thick MDF |
| Table Frame | AISI 1010-1015 HRS 16A Gauge steel tube |
| Table Mount | 1-1/4" Thick Solidwood - Ash or Walnut |

KEILHAUER

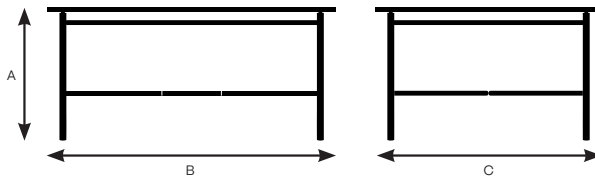
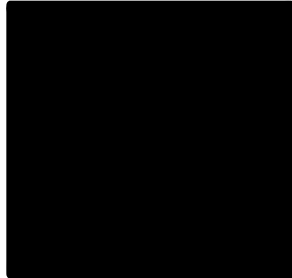
Boxcar Specifications

Design by EOOS
Made by Keilhauer

| | 4383 Rectangular coffee table, glass top | 4384 Rectangular coffee table, glass top |
|-----------------|---|---|
| Table Top Width | 36.75" | 47.25" |
| Table Top Depth | 28.75" | 31.5" |

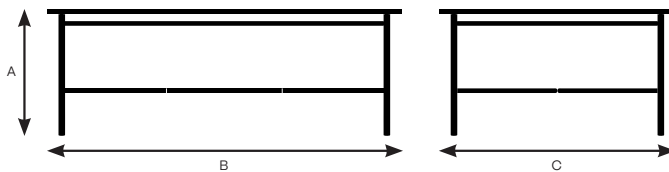
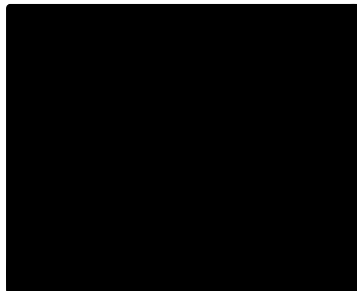
Model 4383

| | |
|-------------------|--------|
| A. Overall Height | 13.75" |
| B. Overall Width | 36.75" |
| C. Overall Depth | 28.75" |



Model 4384

| | |
|-------------------|--------|
| A. Overall Height | 13.75" |
| B. Overall Width | 47.25" |
| C. Overall Depth | 31.5" |



Construction Material

| | |
|-------------|---|
| Table Top | Laminated/Veneer 1" Thick MDF |
| Table Frame | AISI 1010-1015 HRS 16A Gauge steel tube |
| Table Mount | 1-1/4" Thick Solidwood - Ash or Walnut |

KEILHAUER

Boxcar Specifications

Design by EOOS
Made by Keilhauer

Leg/Frame Finishes



PC00 – Nickel



PC01 – Onyx



PC05 – Shale



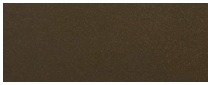
PC23 – Dark Gray



PC24 – Warm Gray



PC25 - White

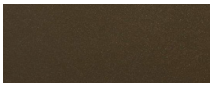


PC27 – Bronze



Chrome

Table Top Finishes



PC27 – Bronze



Chrome