

KEILHAUER

# Garner Ganging Assembly Guide



[keilhauer.com](http://keilhauer.com)

1450 Birchmount Road  
Toronto, Ontario, Canada  
M1P 2E3

T 416 759 5665  
F 416 759 5723  
1 800 724 5665

# Garner In-line Ganging Assembly Instructions

KEILHAUER

## Tool Required

Hex Key

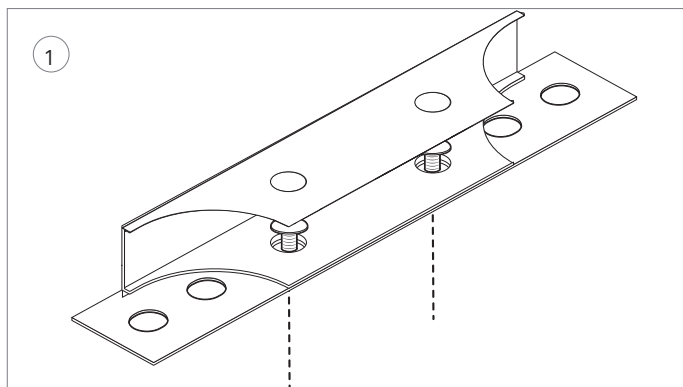
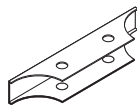
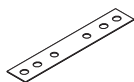
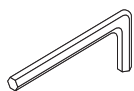
## Hardware Included

Ganging Bar x2

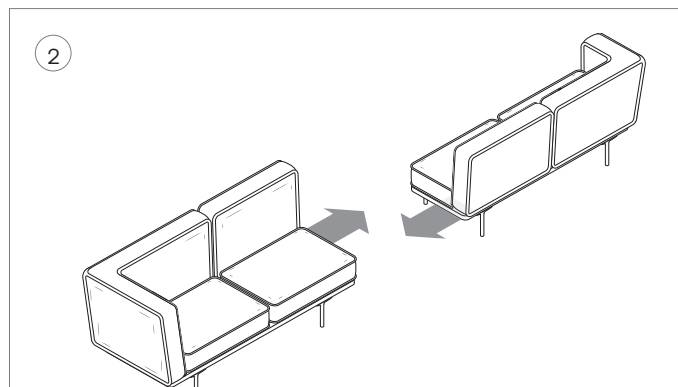
5/16" Button head screw

Ganging Cover (Long) x2

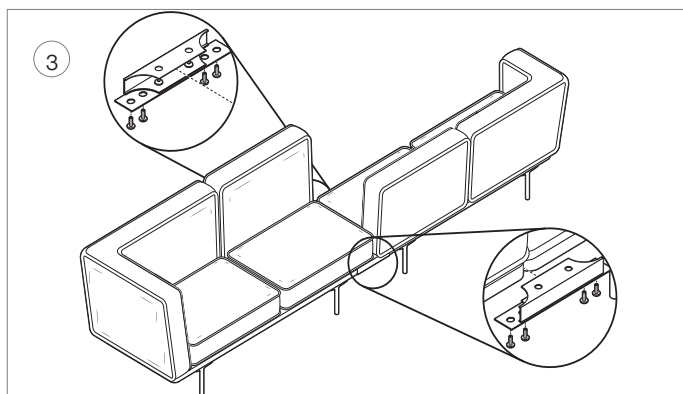
10- 24 x 1/4" Button head screw



Prior to ganging sofa pieces together. Fasten the (x2) ganging cover over the ganging bar using (x2) 10- 24 x 1/4" button head screw.



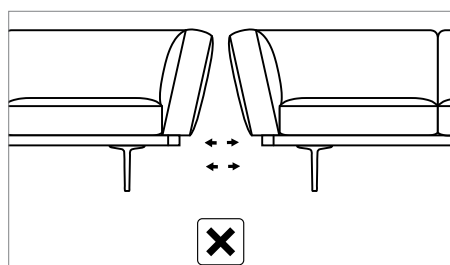
Push sofa pieces tightly together. Ensure they sit level with each other prior to ganging.



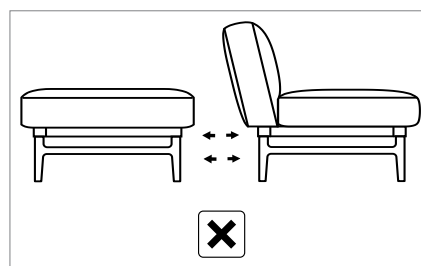
Proceed to gang sofa pieces together using the ganging bar/cover (x2) and (x8) 5/16" Button head screw.

## Models that cannot be ganged together

### Arm to Arm



### Back to Back



# Garner Corner Ganging Assembly Instructions

KEILHAUER

## Tool Required

Hex Key

## Hardware Included

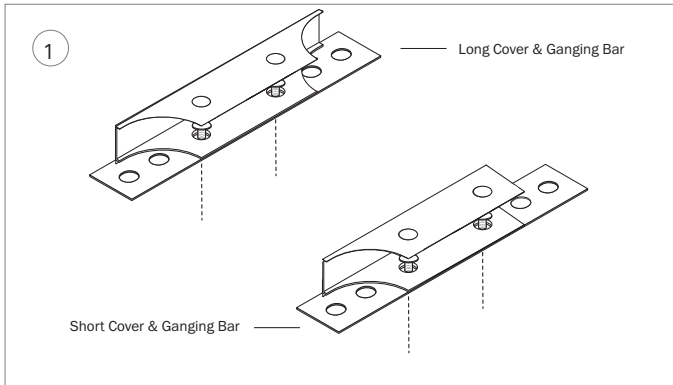
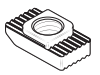
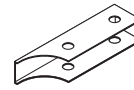
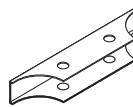
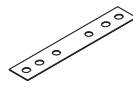
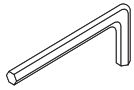
Ganging Bar x2

5/16" Button head screw

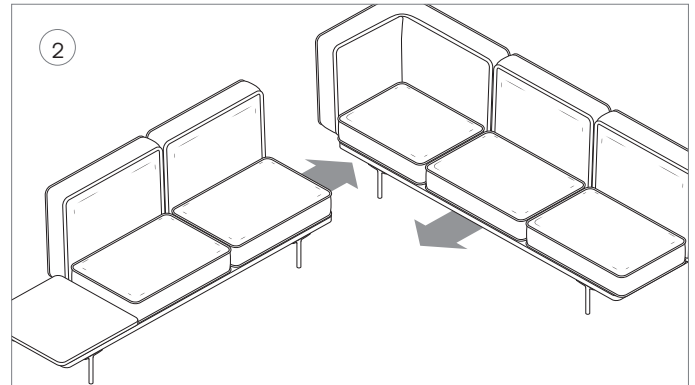
Ganging Cover (Long) x2 Ganging Cover (Short) x2

10- 24 x 1/4" Button head screw

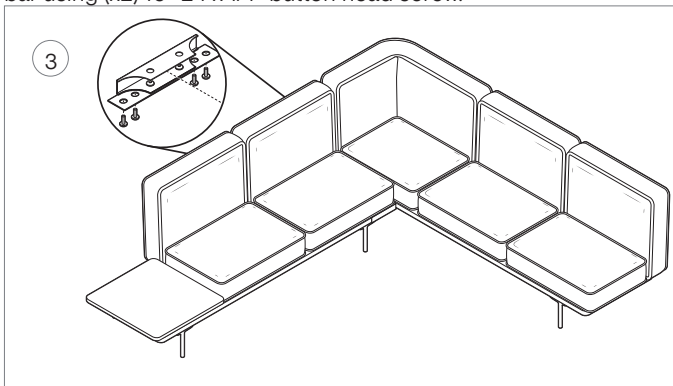
Drop in T-Nut



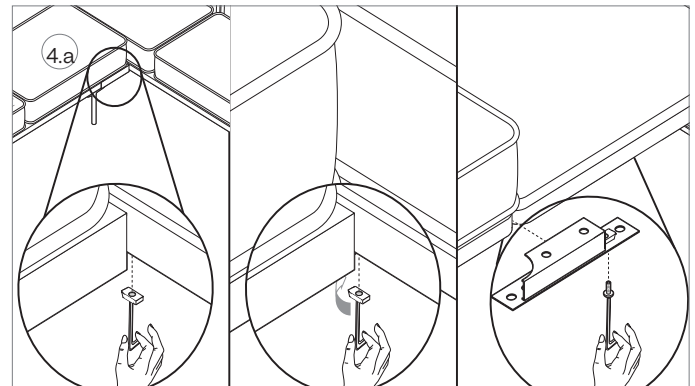
Prior to ganging sofa pieces together. Fasten (x1) long ganging cover over the ganging bar using (x2) 10- 24 x 1/4" button head screw. Then proceed to fasten (x1) short ganging cover over the ganging bar using (x2) 10- 24 x 1/4" button head screw.



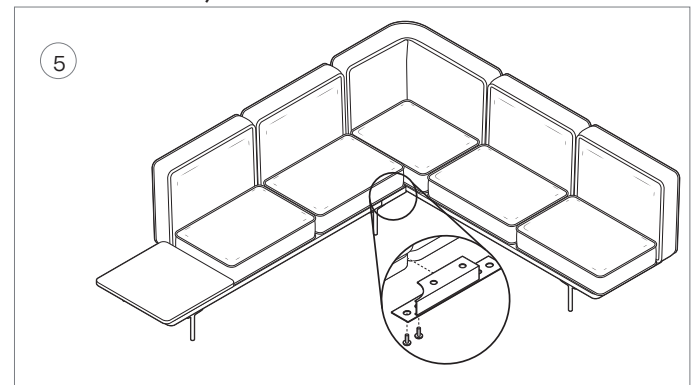
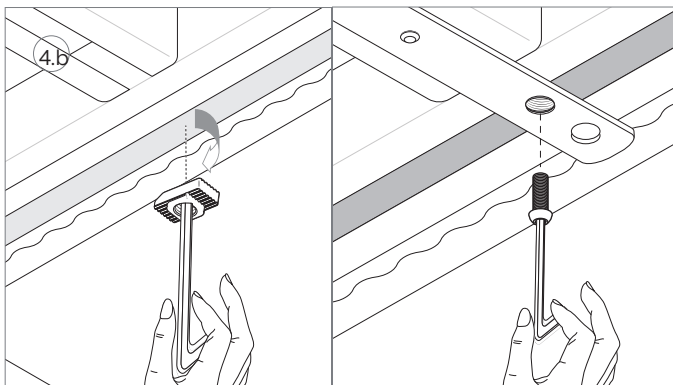
Push sofa pieces tightly together. Ensure they sit level with each other prior to ganging.



Using a hex key, proceed to gang sofa pieces together on the back of the sofa using the ganging bar/long cover (x1) and (x4) 5/16" Button head screw.



Using a hex key, proceed to insert the Drop in T-Nut up into the underside track, then rotate the T-Nut 90°. Then fasten the (x1) ganging bar/short cover using (x1) 5/16" Button head screw. (See Figure 4.b for underside view).



Using a hex key, proceed to gang sofa pieces together on the front facing sofa unit using the ganging bar/short cover (x1) and (x2) 5/16" Button head screw.