

# KEILHAUER

Spec Sheet

# Neesh



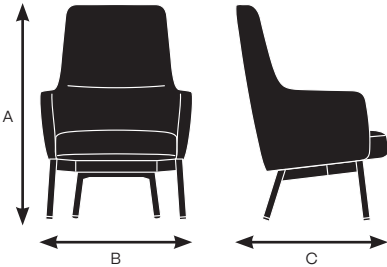
# Neesh Specifications

Design by EOOS  
Made by Keilhauer

94024	
Mid back lounge chair with clean out, 4-leg steel base	
Seat	
Seat Height	18"
Seat Width	19.5"
Seat Depth	20"
Seat Pan Angle	6.5°
Back	
Backrest Height	30.25"
Backrest Width	22.5"
Backrest Angle	105°
Backrest to Seat Angle	98.5°
Arms	
Arm Height	8.25"
Armrest Length	16"
Armrest Width	2.25"
Armrest Set Back	3.75"
Width Between Armrests	25"
Arm Height from Floor	26.25"

## Model 94024

A. Overall Height	43.25"
B. Overall Width	31.5"
C. Overall Depth	31.5"



## Construction Material

Body	CFC free molded polyurethane flex foam molded around a steel frame
Upholstered Back	CFC free molded polyurethane flex foam cushion glued onto a 3/8" thick engineered plywood panel
Upholstered Seat	CFC free molded polyurethane cut foam cushion glued onto a 3/4" thick engineered plywood constructed frame
Frame	5/8" diameter hot rolled 1010 HRS steel tube
Foam	CFC free molded polyurethane flex foam
Legs	1.25" diameter hot rolled steel tube, 1" x 2" hot rolled rectangular steel tube
Glides	Clarified nylon TR90

KEILHAUER

# Neesh Specifications

Design by EOOS  
Made by Keilhauer

## Steel Base Finishes



PC00 - Nickel



PC01 - Onyx



PC05 - Shale



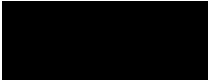
PC23 - Dark Gray



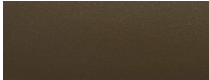
PC24 - Warm Gray



PC25 - White



PC26 - Black Satin



PC27 - Bronze