

KEILHAUER
Spec Sheet

Simple



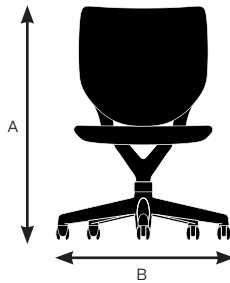
Simple Specifications

Design by Mark Kapka
Made by Keilhauer

	9310 Conference chair, upholstered armless, fixed height	9311 Conference chair, upholstered with arms, fixed height	9312 Conference chair, upholstered armless, pneumatic height adjustment	9313 Conference chair, upholstered with arms, pneumatic height adjustment
Seat				
Seat Height	18"	18"	17.25" - 21.5"	17.25" - 21.5"
Seat Width	21.25"	21.25"	21.25"	21.25"
Seat Depth	18"	18"	18"	18"
Seat Pan Angle	0°	0°	0°	0°
Back				
Backrest Height	19.25"	19.25"	19.25"	19.25"
Backrest Width	20"	20"	20"	20"
Backrest Angle	95°	95°	95°	95°
Backrest to Seat Angle	95°	95°	95°	95°
Arm				
Arm Height	N/A	7.25"	N/A	7.25"
Armrest Length	N/A	9.25"	N/A	9.25"
Armrest Width	N/A	3.25"	N/A	3.25"
Armrest Set Back	N/A	4.25"	N/A	4.25"
Width Between Armrests	N/A	18.75"	N/A	18.75"
Arm Height from Floor	N/A	25.25"	N/A	24.5" - 28.75"

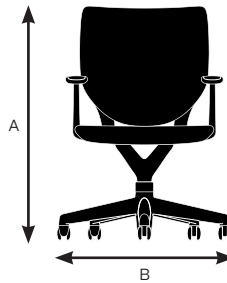
Model 9310

A. Overall Height	37.5"
B. Overall Width	25.75"
C. Overall Depth	27.5"



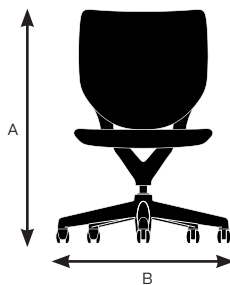
Model 9311

A. Overall Height	37.5"
B. Overall Width	26.5"
C. Overall Depth	27.5"



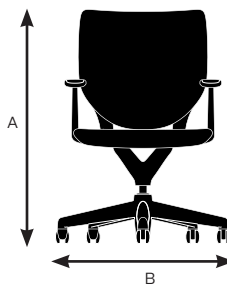
Model 9312

A. Overall Height	37.5"
B. Overall Width	25.75"
C. Overall Depth	27.5"



Model 9313

A. Overall Height	37.5"
B. Overall Width	26.5"
C. Overall Depth	27.5"



Construction Material

Seat	Stamped steel
Structural Back Frame	Molded nylon - 30% glass reinforced
Inside Back Cover	Molded polypropylene
Mesh	67% filament polyester, 33% polyester co-polymer elastomeric
Foam	High density CFC-free polyurethane foam (contains between 5% and 7% bio polyols)
Arm	100% recycled post-consumer PET resin; arm cap is integral skin
Base	Molded glass filled nylon
Wishbone/Wishbone Cap	Wishbone: cast aluminum alloy (EN AB 47100); wishbone cap: recycled polypropylene

KEILHAUER

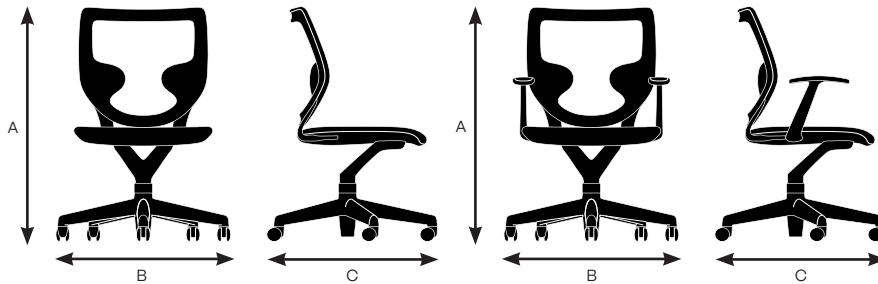
Simple Specifications

Design by Mark Kapka
Made by Keilhauer

	9320 Conference chair, mesh back armless, fixed height	9321 Conference chair, mesh back with arms, fixed height	9322 Conference chair, mesh back armless, pneumatic height adjustment	9323 Conference chair, mesh back with arms, pneumatic height adjustment
Seat				
Seat Height	18"	18"	17.25 - 21.5"	17.25 - 21.5"
Seat Width	21.25"	21.25"	21.25"	21.25"
Seat Depth	18"	18"	18"	18"
Seat Pan Angle	0°	0°	0°	0°
Back				
Backrest Height	19.25"	19.25"	19.25"	19.25"
Backrest Width	20"	20"	20"	20"
Backrest Angle	95°	95°	95°	95°
Backrest to Seat Angle	95°	95°	95°	95°
Arm				
Arm Height	N/A	7.25"	N/A	7.25"
Armrest Length	N/A	9.25"	N/A	9.25"
Armrest Width	N/A	3.25"	N/A	3.25"
Armrest Set Back	N/A	4.25"	N/A	4.25"
Width Between Armrests	N/A	18.75"	N/A	18.75"
Arm Height from Floor	N/A	25.25"	N/A	24.5 - 28.75"

Model 9320

A. Overall Height	37.5"
B. Overall Width	25.75"
C. Overall Depth	27.5"

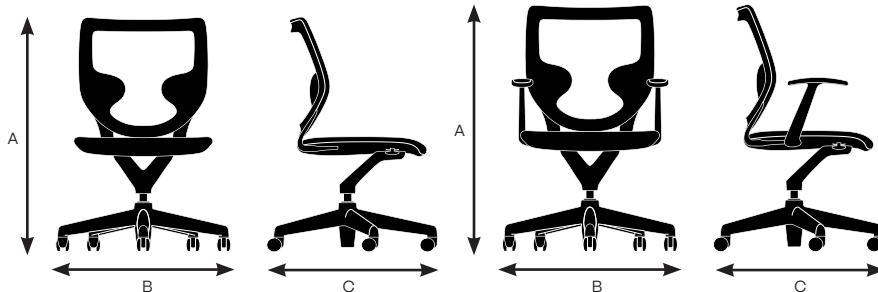


Model 9321

A. Overall Height	37.5"
B. Overall Width	26.5"
C. Overall Depth	27.5"

Model 9322

A. Overall Height	37.5"
B. Overall Width	25.75"
C. Overall Depth	27.5"



Model 9323

A. Overall Height	37.5"
B. Overall Width	26.5"
C. Overall Depth	27.5"

Construction Material

Seat	Stamped steel
Structural Back Frame	Molded nylon - 30% glass reinforced
Inside Back Cover	Molded polypropylene
Mesh	67% filament polyester, 33% polyester co-polymer elastomeric
Foam	High density CFC-free polyurethane foam (contains between 5% and 7% bio polyols)
Arm	100% recycled post-consumer PET resin; arm cap is integral skin
Base	Molded glass filled nylon
Wishbone/Wishbone Cap	Cast aluminum alloy (EN AB 47100); cap: recycled polypropylene

KEILHAUER

Simple Specifications

Design by Mark Kapka
Made by Keilhauer

Mesh Colors



ME001 - Black



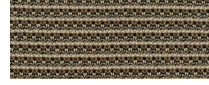
ME002 - Silver



ME003 - White



ME004 - Steel



ME005 - Sandstone



ME006 - Pumice stone



ME007 - Blue Ink



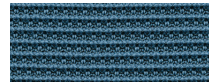
ME008 - Red



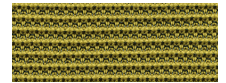
ME009 - Lupin



ME010 - Amethyst



ME011 - Ocean



ME012 - Treemoss



ME013 - Orange

Base Finishes



B08 - Black



PA00 - Polished
Aluminum