

KEILHAUER

Swurve



Carbon Neutral, Colorful, Comfortable.

There are a variety of elements that make Swurve™ a soft and structural addition to any boardroom, from its sleek cast aluminum arms, to its expansive color palette, to its ergonomic knit back. And as the first Keilhauer product that is completely carbon neutral, it checks all the boxes in the office chair department.

A Sustainable Solution

When designing Swurve, we've eliminated carbon emissions at every turn by sustainably sourcing materials, responsibly manufacturing all elements of the chair, and offering breakdown and recycling directions. Where carbon emissions remain (such as during the transportation process) Keilhauer has offset the effects by investing in carbon emission and climate change mitigation projects. Every Swurve sold will produce net-zero carbon emissions.

Naturally Colorful

From neutrals to bold hues taken from nature, Swurve's expansive color offering makes it highly versatile. Available in 22 different mesh colors, Swurve can be customized to complement any palette, tone, or use. The Channel Back model is available in most Keilhauer upholstery options from rich leathers to premium textiles. Every finish enhances Swurve's sleek, sustainable design, giving you even more ways to tailor it.

Armed for Style and Comfort

The Swurve design is defined by a graceful, swooping arm that subtly twists as if it has organically grown from the chair's body. Each arm also includes a cap that creates a bumper to protect table edges and is gently sloped so arms tuck neatly under tables without contact. Swurve's comfortable seat leverages Keilhauer's patented syncro-tilt mechanism to provide smooth movement when leaning or moving. And with an ergonomic knit back, the chair has a uniquely light feel.



(Cover & Page 2)

Swurve 79101

Mid channel back office chair,
upholstered in Nova Eclipse,
5-star aluminum base

(Below)

Swurve 79001

Mid mesh back office chair, mesh
back in Marina, seat upholstered
in Vicolo Storm, 5-star aluminum
base

Swurve 79001

Mid mesh back office chair, mesh
back in Cacti, seat upholstered in
Vicolo Sprout, 5-star aluminum
base

Swurve 79101

Mid channel back office chair,
upholstered in Wyoming Marine,
5-star aluminum base

Swurve 79001

Mid mesh back office chair, mesh
back in Storm, seat upholstered in
Haven Quartz, 5-star aluminum
base





79000
Mid mesh back office chair,
5-star nylon base

79001
Mid mesh back office chair,
5-star aluminum base

V-Mesh Back Models 79000/79001



VM120
Rosé



VM100
Terracotta



VM119
Tulip



VM121
Maraschino



VM118
Grape



VM111
Pacific



VM113
Marina



VM110
Sea



VM108
Cacti



VM109
Deep Teal



VM117
Snow



VM115
Salt



VM116
Barley



VM114
Mushroom



VM101
Morel



VM107
Platinum



VM106
Storm



VM105
Pepper



VM104
Bark



VM102
Black



VM103
Espresso



VM112
Atlantic



Swurve 79001
Mid mesh back office chair, mesh
back in Tulip, seat upholstered in
Vicolo Tulip, 5-star aluminum base



79100
Mid channel back office chair,
5-star nylon base

79101
Mid channel back office chair,
5-star aluminum base

Swurve 79100/79101 can be upholstered in most Keilhauer textiles and all Keilhauer faux leathers and leathers.



Swurve 79101
Mid channel back conference chair
with 5-Star aluminum base,
upholstered in Wyoming Marine

Finishes

Nylon Base Finishes



14 - Warm Gray



15 - Black



23 - Dark Gray

*Aluminum arms on Nylon models available in Polished Aluminum or powdercoat of the matching base color

Aluminum Base and Arm Finishes



PA00
Polished
Aluminum



PC23
Dark Gray



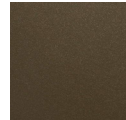
PC24
Warm Gray



PC25
White



PC26 - Black
(Satin)



PC27 - Bronze

*Aluminum arms on Aluminum base ships standard in PA00 Polished Aluminum arms can be powdercoated

Arm Cap



Black



Dark Gray



Silver

keilhauer.com

1450 Birchmount Road
Toronto, Ontario, Canada
M1P 2E3

T 416 759 5665
F 416 759 5723
1 800 724 5665

Designed by Andrew Jones.
Made by Keilhauer.

© 2025 Keilhauer LTD.
Current cut sheets, options and pricing available
on keilhauer.com