

Swurve

KEILHAUER



Comfortable.

Colorful.

Carbon neutral.



There are a variety of elements that make Swurve a soft and structural addition to any boardroom, from its sleek cast aluminum arms, to its expansive color palette, to its ergonomic knit back. And as the first Keilhauer product that is completely carbon neutral, it checks all the boxes in the office chair department.

Designed by Andrew Jones  
Made by Keilhauer



KEILHAUER

# A Sustainable Solution

When designing Swurve, we eliminated carbon emissions at every turn by sustainably sourcing materials, responsibly manufacturing all elements of the chair, and implementing an end-of-life recycling plan. Where carbon emissions remain (such as during the transportation process) Keilhauer has offset the effects by investing in carbon emission and climate change mitigation projects.

As such, every Swurve sold will produce net-zero carbon emissions.

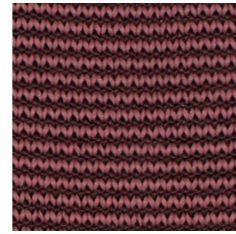


Available with mesh back and upholstered seat or channel back and upholstered seat.

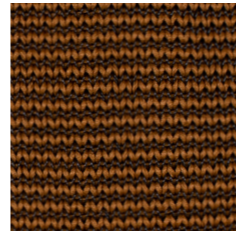


# Swurve V-Mesh

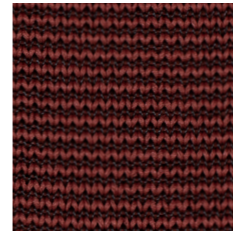
Mesh available in  
22 colors.



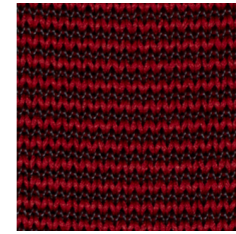
Rosé



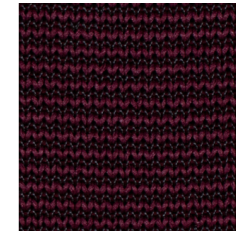
Terracotta



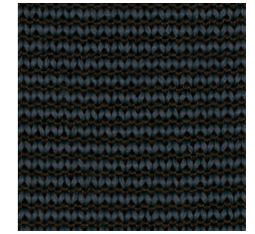
Tulip



Maraschino



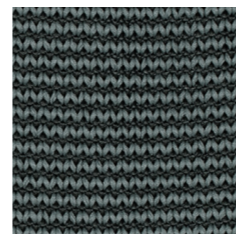
Grape



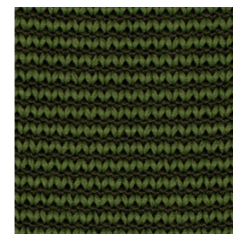
Pacific



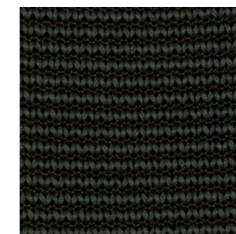
Marina



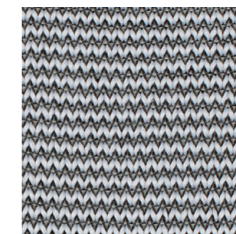
Sea



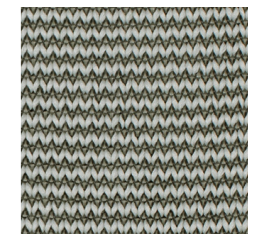
Cacti



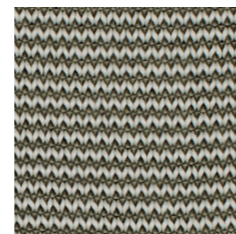
Deep Teal



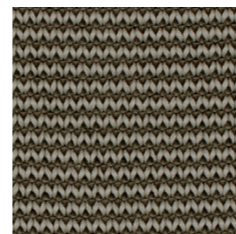
Snow



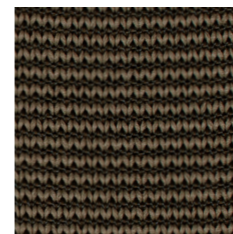
Salt



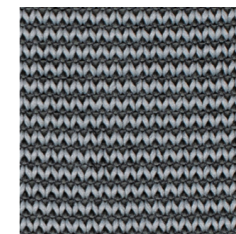
Barley



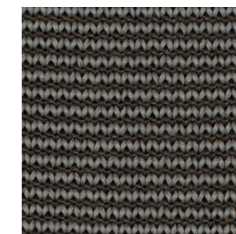
Mushroom



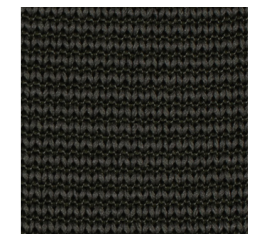
Morel



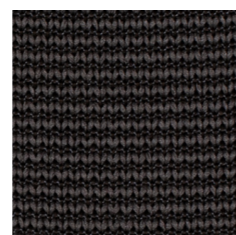
Platinum



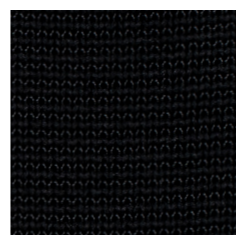
Storm



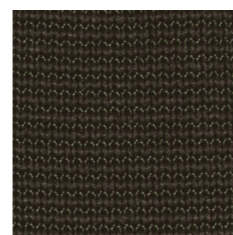
Pepper



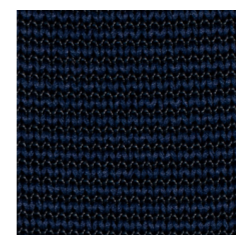
Bark



Black



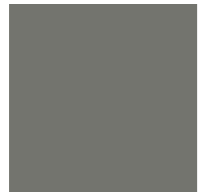
Espresso



Atlantic

# Finishes

## Nylon Base Finishes



14-Warm Gray



15-Black



23-Dark Gray

\*Aluminum arms on Nylon models available in Polished Aluminum or powdercoat of the matching base color

## Aluminum Base and Arm Finishes



PA00 - Polished Aluminum



PC23 - Dark Gray



PC24 - Warm Gray



PC25 - White



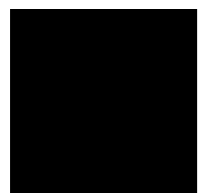
PC26 - Black (Satin)



PC27 - Bronze

\*Aluminum arms on Aluminum base ships standard in PA00 Polished Aluminum arms can be powdercoated

## Arm Cap



Black



Dark Gray



Silver



79000/79100



79001 /79101

# KEILHAUER

