



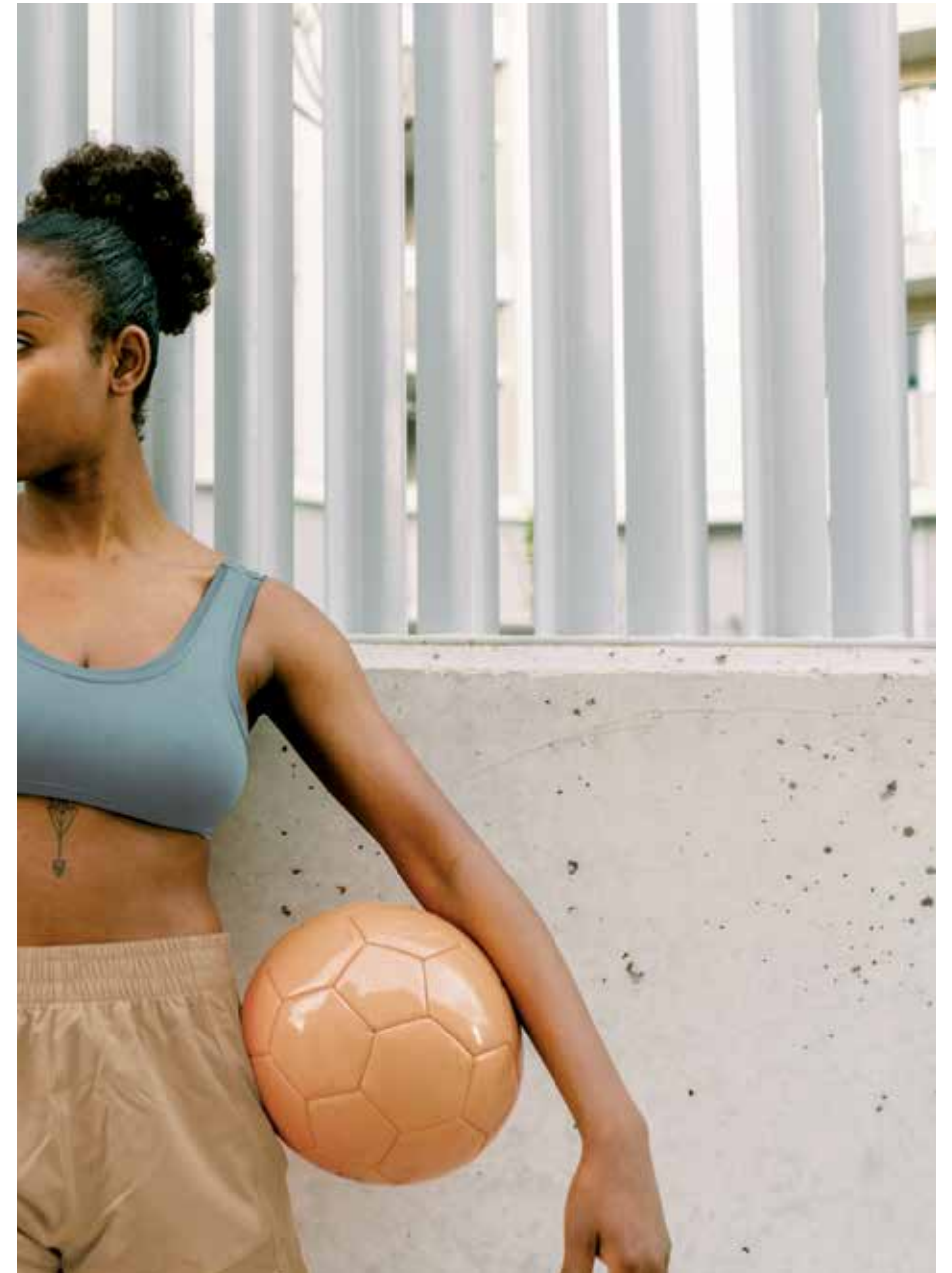
BENTLEY®

RECRUITED II AND SIGNED UP
WITH FREE DAY COLOR

FAST TRACK



BENTLEY



Recruited II and Signed Up

When you're scouting the best flooring solutions, you're looking for that perfect combination—performance, appearance retention, acoustics, pricing, and available now!

Recruited™ II and **Signed Up™** check all your boxes. This collection offers an easy to use, coordinated color palette that includes two strong neutrals to unify any space and 8 vibrant accents from **Free Day™ Color**, that are sure to match your team spirit.

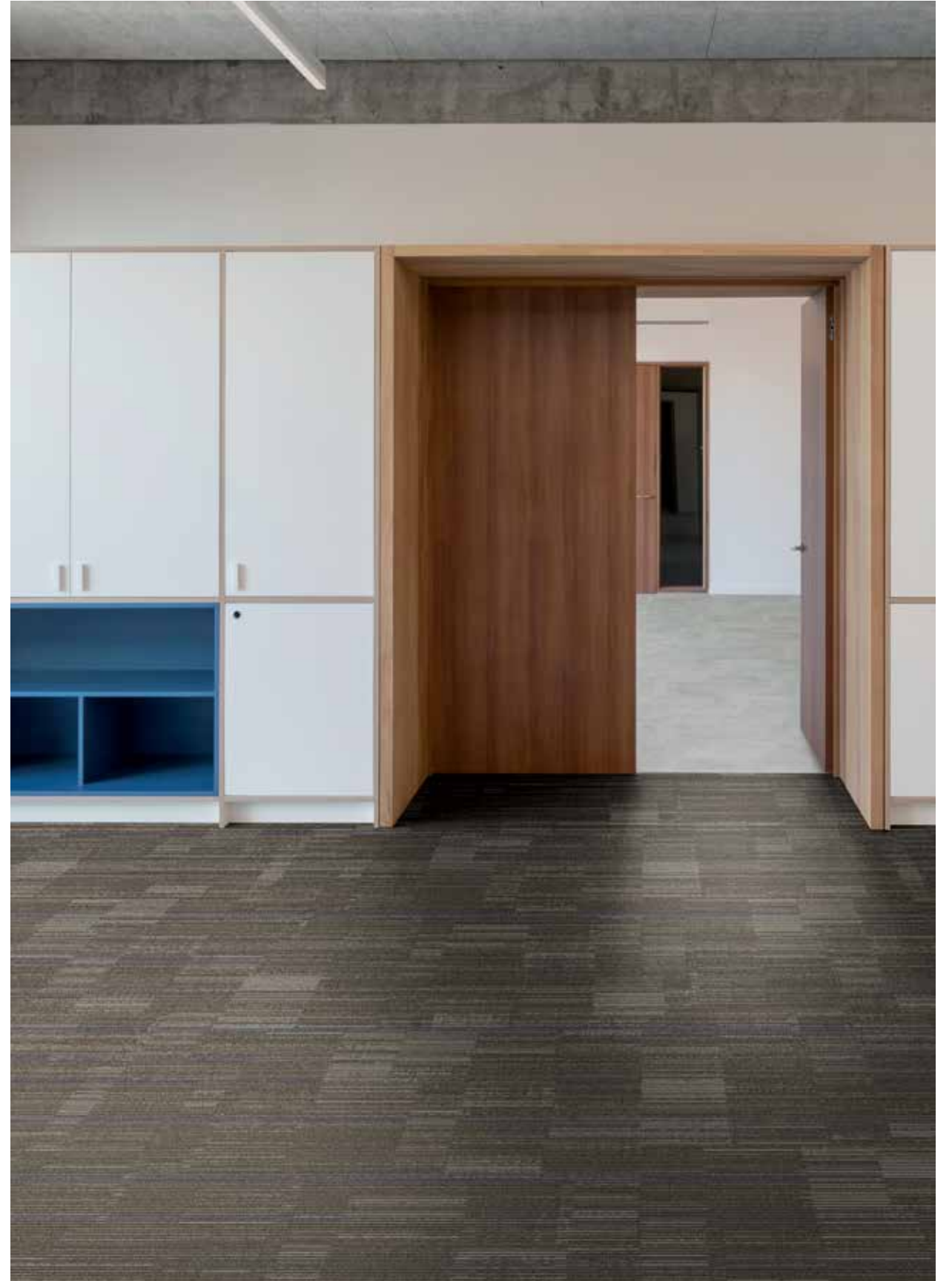
With winning looks and talent, Recruited II and Signed Up are designed for extra innings. Made with solution dyed Bentley Premium™ Nylon with high recycled content and low carbon footprint, both styles are built to perform in heavy duty traffic. And when you choose EliteFlex™ 6ft Cushion roll goods, you'll be improving the acoustics in your facility, softening the ambient noise wherever it is installed.



RECRUITED II 6ROT4, FLY BALL 410008, 18 IN X 36 IN - BRICK (LEFT)
SIGNED UP 6SIT4, CHAMP 407920, 18 IN X 36 IN - BRICK (RIGHT)



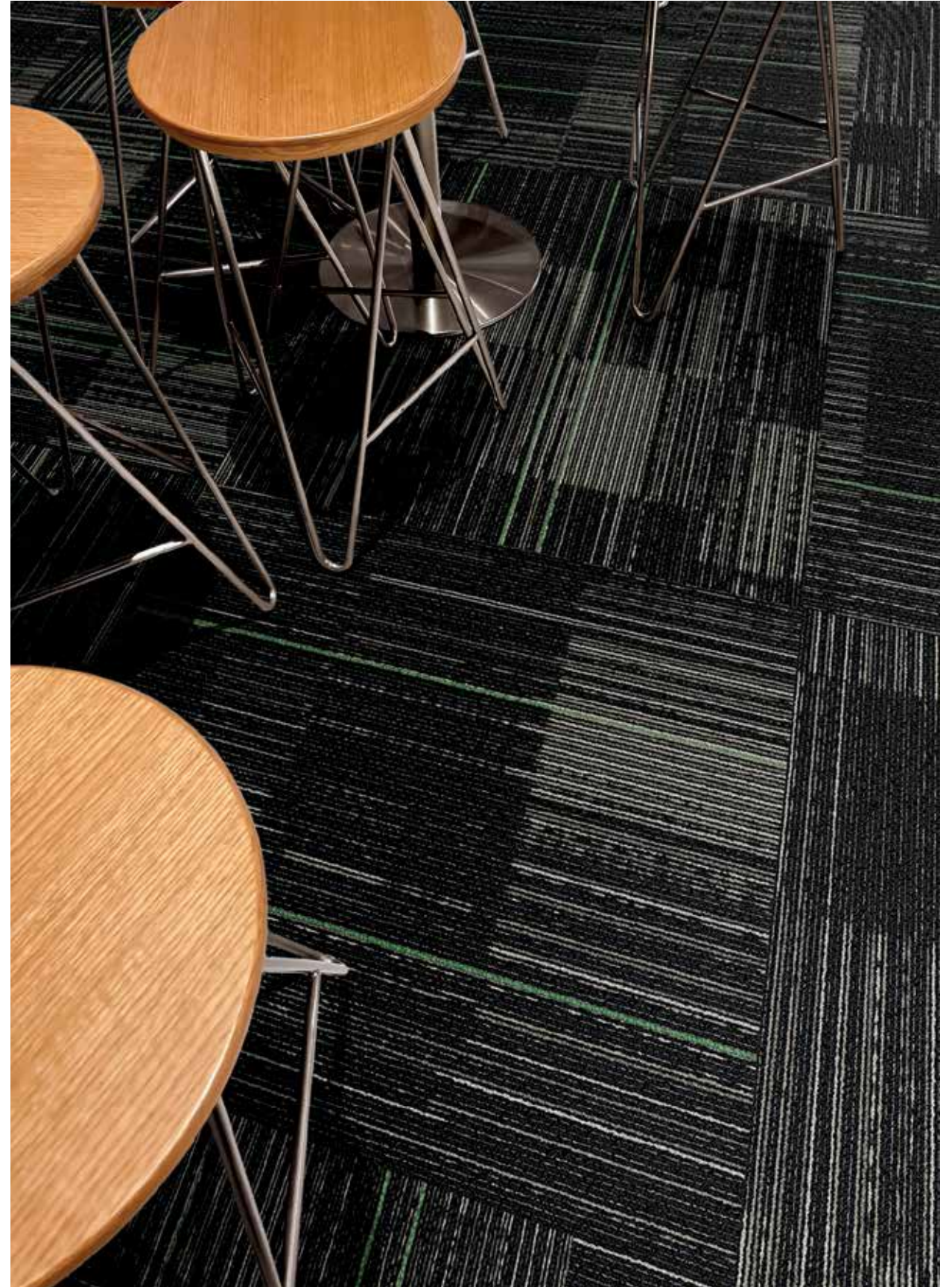
RECRUITED II 6RQT4, BASELINE 410001, FREE DAY COLOR 6FDT4, BEACH DAY 400964, 24 IN X 24 IN - BRICK



RECRUITED II 6RQT4, BASE HIT 410010, 6 FT - ELITEFLEX, BALUSTRAD BBAU, MEDITERRANEAN 802117, 18 IN X 36 IN - ASHLAR



RECRUITED II 6ROT4, GOAL 410006, 18 IN X 36 IN - BRICK

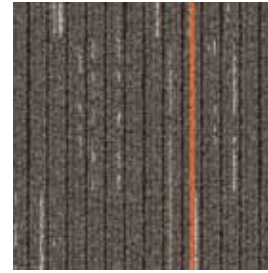


RECRUITED II 6ROT4, 3-POINTER 410013, 24 IN X 24 IN - QUARTER TURN

RECRUITED™ II



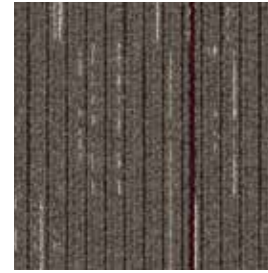
Backhand 410000



Baseline 410001



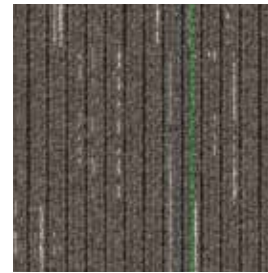
Volley 410002



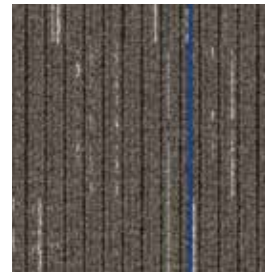
Rally 410003



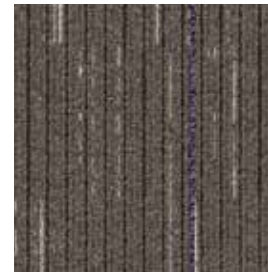
Fly Ball 410008



Double Play 410009

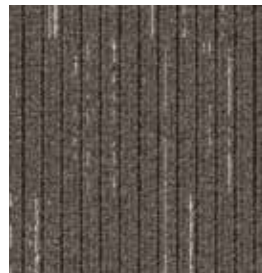


Base Hit 410010



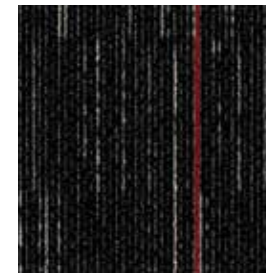
Fastball 410011

SIGNED UP™

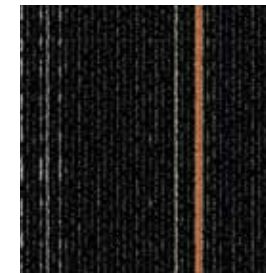


Champ 407920

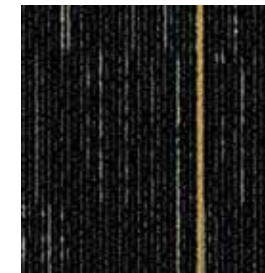
RECRUITED™ II



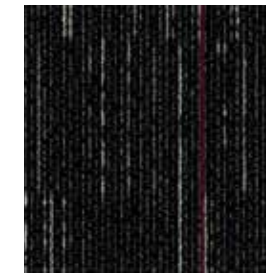
Offside 410004



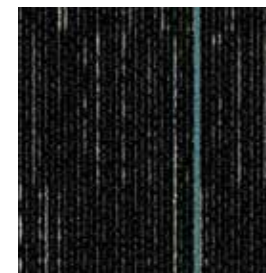
Penalty Kick 410005



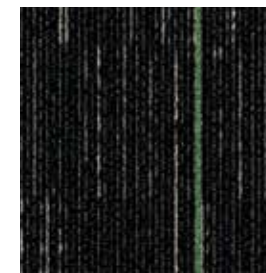
Goal 410006



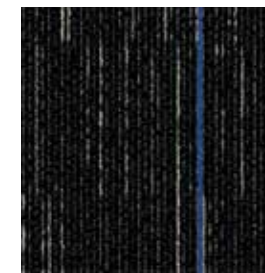
Assist 410007



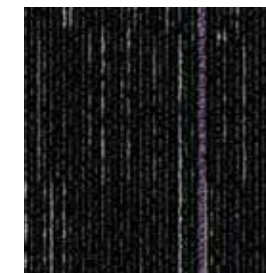
Slam Dunk 410012



3-pointer 410013

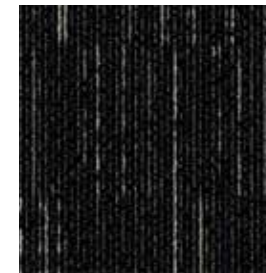


Double Dribble 410014



Alley-oop 410015

SIGNED UP™



Coach 407921

Recruited II Style Number 6RQT4
Signed Up Style Number 6SIT4
Product Construction Tufted Textured Loop
Fiber Bentley Premium™ Nylon
Dye Method Solution Dyed

PVC-Free Backing Options
 AFIRMA II™ Hardback Tile
 AFFIX™ Hardback Tile
 LuxFelt™ Cushion Tile
 NexStep® Cushion Tile
 EliteFlex™ 6 ft Cushion
 High PerformancePC Broadloom

Size Options
 18 in x 36 in, 24 in x 24 in
 18 in x 36 in, 24 in x 24 in
 18 in x 36 in, 24 in x 24 in
 18 in x 36 in, 24 in x 24 in
 6 ft
 12 ft

For complete product specifications, visit bentleymills.com

Fast Track is Bentley's quick-ship program. This program is designed for maximum flexibility and expedited delivery to the client. **Free Day Color** is available in 14 colorways, **Recruited II** is available in 16 colorways, and **Signed Up** is available in 2 colorways. All products are available in 18 in x 36 in and 24 in x 24 in AFIRMA II™ Hardback Tile, LuxFelt™ Cushion Tile, NexStep® Cushion Tile, EliteFlex™ 6 ft Cushion, and High PerformancePC Broadloom. Orders of 1500 square yards or less will be ready to ship within 10 business days of order. For orders exceeding 1500 square yards, please contact our Customer Care Concierge for availability.

9 in x 36 in tile option and AFFIX™ Hardback Tile backing are excluded from the Fast Track program.

Signed Up and Recruited II Recommended Carpet Tile Installation Methods

18 in x 36 in



Brick Herringbone

24 in x 24 in



Brick Quarter Turn

FAST TRACK
QUICK SHIP

FREE DAY COLOR



Frisbee 400961



Tag 400962



Kickball 400963



Beach Day 400964



Playground 400965



Chalk Art 400966



Swing Set 400967



Jungle Gym 400968



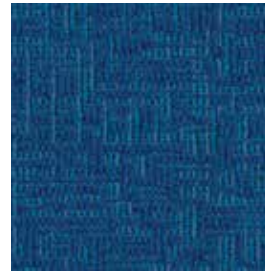
At Bat 400969



50 Yard Dash 400970



Bike Ride 400971



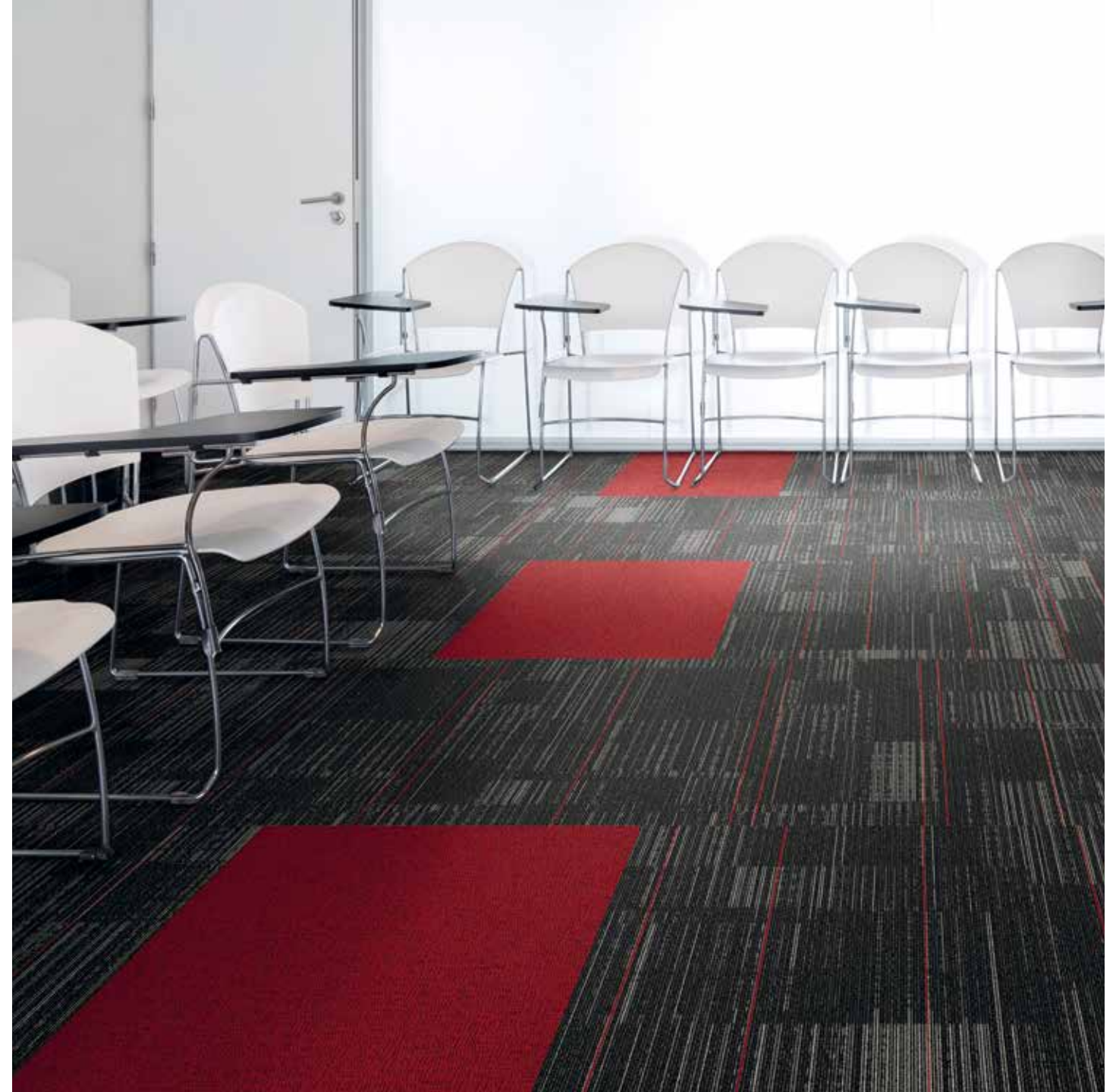
Skate Park 400972

Style Number 6FDT6
Product Construction Tufted Textured Loop
Fiber Bentley Premium™ Nylon
Dye Method Solution Dyed

PVC-Free Backing Options
AFIRMA II™ Hardback Tile
AFFIX™ Hardback Tile
LuxFelt™ Cushion Tile
NexStep® Cushion Tile
EliteFlex™ 6 ft Cushion
High PerformancePC Broadloom

Size Options
9 in x 36 in, 18 in x 36 in, 24 in x 24 in
9 in x 36 in, 18 in x 36 in, 24 in x 24 in
9 in x 36 in, 18 in x 36 in, 24 in x 24 in
9 in x 36 in, 18 in x 36 in, 24 in x 24 in
6 ft
12 ft

For complete product specifications, visit bentleymills.com



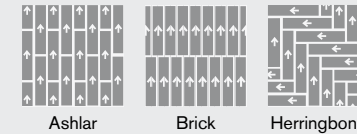
RECRUITED II 6RQT4, OFFSIDE 410004, FREE DAY COLOR 6FDT4, TAG 400962, 24 IN X 24 IN - BRICK



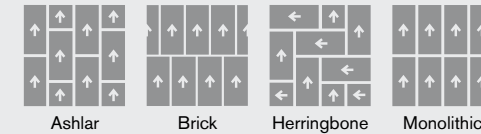
CE Mark excludes AFFIX™ Hardback Tile.

Free Day Color Recommended Carpet Tile Installation Methods

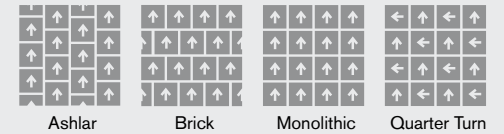
9 in x 36 in



18 in x 36 in



24 in x 24 in



The printed images may not be an accurate reproduction of the product's actual colorways. We strive to offer an authentic representation, but images may vary according to press run and location lighting. These images are intended as a guide only. If you would like a sample of this product, please call Customer Care at 800.423.4709.

Bentley's carpet products are manufactured in our California mill, a LEED Existing Buildings: Operations and Maintenance Gold certified facility. Product Certifications and Declarations can be found under the Responsibility section of our website. For more information, including additional backing options, detailed specifications, and warranties, please visit bentleymills.com.

Carpet specifications and components are subject to normal manufacturing tolerances and may change without notice. Product warranted in accordance with the terms and conditions of Bentley's standard printed warranty in effect at time product is sold. All other warranties, including without limitation any implied warranties of merchantability or fitness for a particular purpose, are hereby disclaimed. Made in USA. Warning: unauthorized reproduction of this carpet design constitutes copyright infringement. ©2024 Bentley Mills, Inc.

Need additional samples or information? 800.423.4709 | bentleymills.com

(BK-CP-1124)



BENTLEY®

800.423.4709 | BENTLEYMILLS.COM

14641 EAST DON JULIAN ROAD, CITY OF INDUSTRY, CALIFORNIA 91746