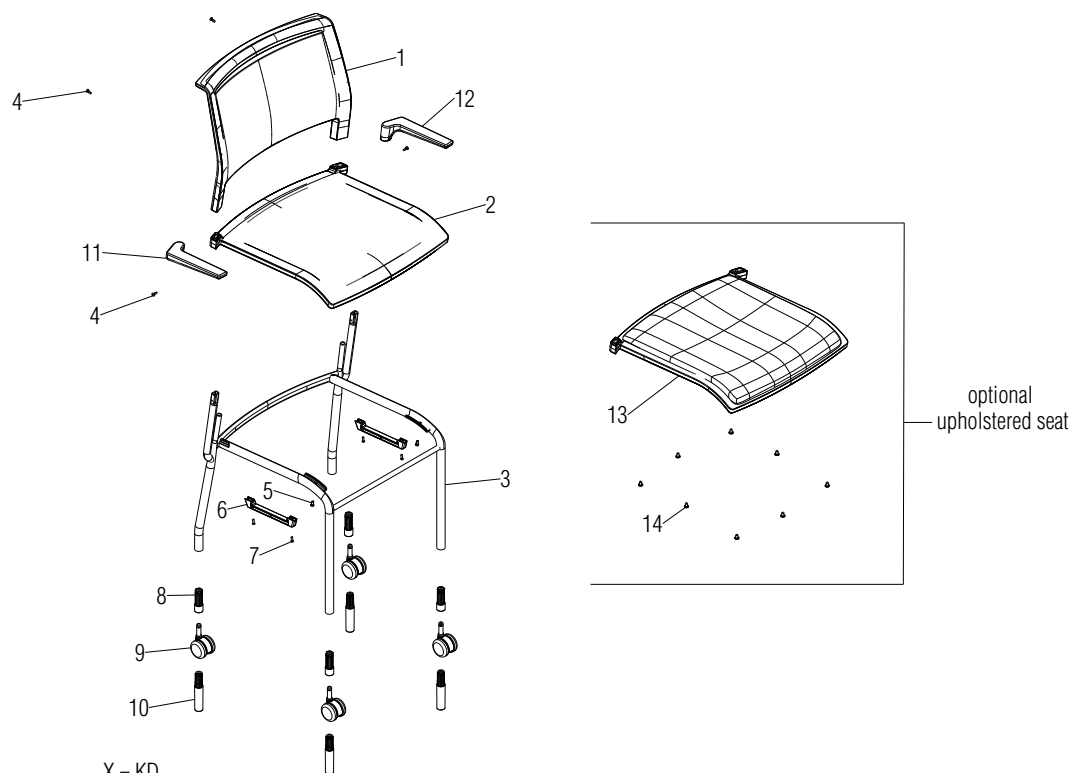


# Parts Diagram

Opt4® 4-Leg Chair  
Arm & Armless (Models OPT4L & OP4LU)

September 2024



.X = KD

.XX = Select Color

PMR = Product Modification Request

See KI-RR-000043 for glide and caster replacement instructions. It is not recommended to swap glides for casters or casters for glides on frames due to the difficult and time consuming nature of changing these items in the field.

Item 3: Frame available with caster bushings (Item 8) or glides (Item 10) installed.

Item 4: Quantity 2 required for Armless Chair and 4 for Armchair.

Item 13: Includes Item 14 installed.

Item	Part Number	Item Description	Req Qty
1	46.3817.04XX.AX	Backrest, Poly Chair	1
	46.3818.04XX.AX	Backrest, Mesh Chair	1
2	46.3815.04XX.AX	Seat, Poly Chair	1
	46.3816.04XX.AX	Seat, Mesh Chair	1
3	04RF	Weldment, 4 Leg Frame with Arms (shown) (see note)	1
	04RF	Weldment, 4 Leg Armless Frame (see note)	1
4	12.0835.XX.X	Screw, M4 x 12mm PBH S/T (see note)	2-4
5	12.0834.X	Screw, M5 x 13mm PFH T/C	2
6	46.4115.XX.X	Bumper, 4 Leg Stacking	2
7	46.4117.X	Screw, M4 x 12mm PBH S/T	4
8	46.4112.BL.X	Bushing, 4 Leg Caster (caster chair only)	4
9	46.4116.BL.X	Caster, 50mm Carpet (caster chair only)	4
	46.4113.BL.X	Caster, 50mm Hard Floor (caster chair only)	4
10	46.4111.XX.X	Glide, Tall (glide chair only)	4
11	46.4120.R.XX.X	Armcap, Right Hand (armchair only)	1
12	46.4120.L.XX.X	Armcap, Left Hand (armchair only)	1
13	PMR	Seat, Upholstered (see note)	1
14	12.0838.X	Screw, #12-16 x .38" #10 Truss Head Hi-Lo Zinc	8

