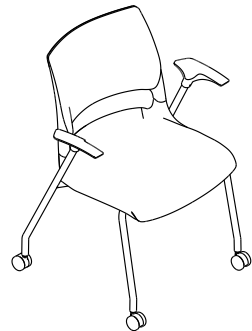


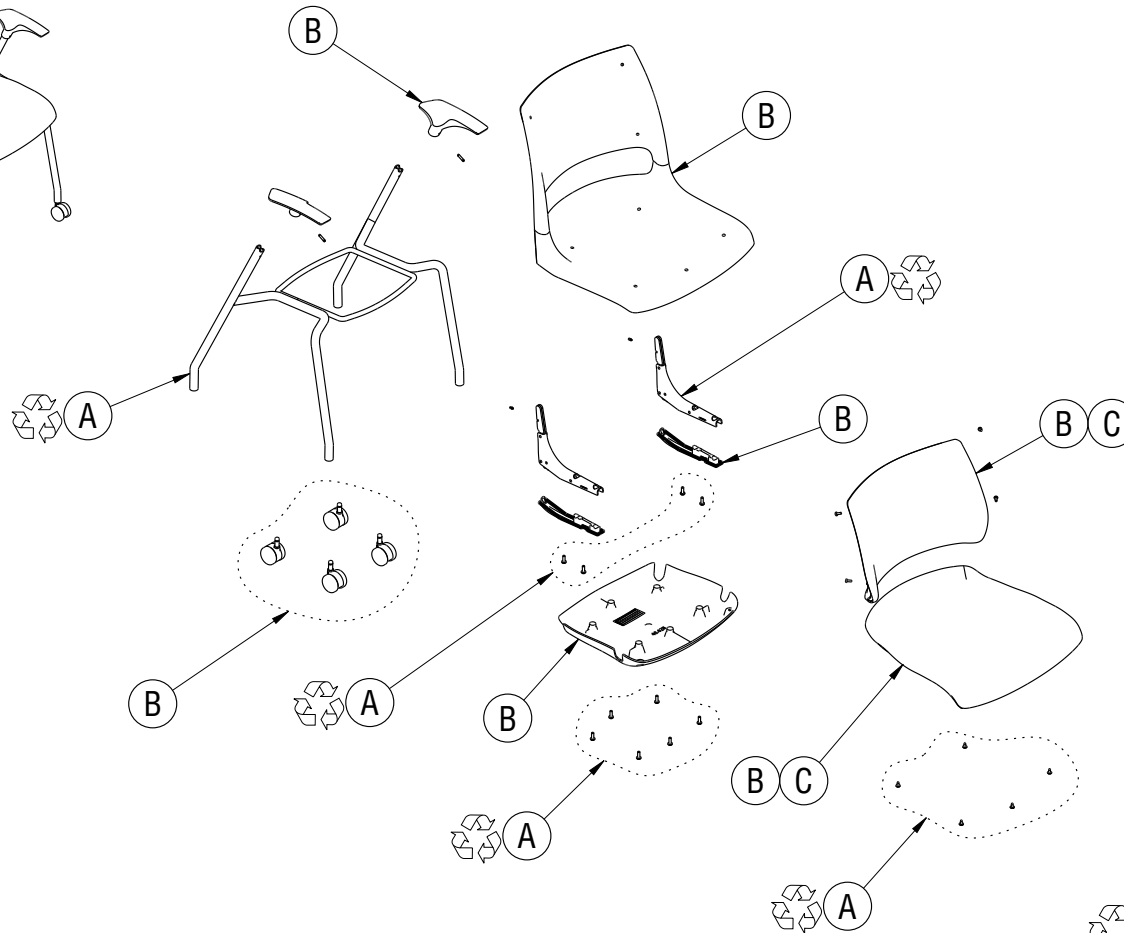
Disassembly Instructions

Doni Stack Chair

Material Type: A .Steel B. Plastic C. Foam/Fabric



SCALE 0.040



Procedure:

1. Remove the set screws attaching the arm rests to the leg frame uprights.
2. Remove the screws holding the seat pan to the leg frame.
3. Remove the screws holding the backrest mechanisms to the seat.
4. Remove the seat and back pads from the seat and back .
5. Remove the casters from the chair base.

General Notes:

1. Disassembly time: 25-30 minutes
2. This procedure assumes basic familiarity with hand tools and furniture terminology: no specialized training is required
3. All materials removed and disassembled shall be sorted and segregated with like materials and disposed of or recycled according to recycling availability or waste acceptance
4. For items to be recycled, refer to KI's End of Life Recycling Matrix and KI's End of Life Recovery Options Matrix, available at www.ki.com

All fasteners not explicitly tagged are Material Type A: Steel

Required Tools

