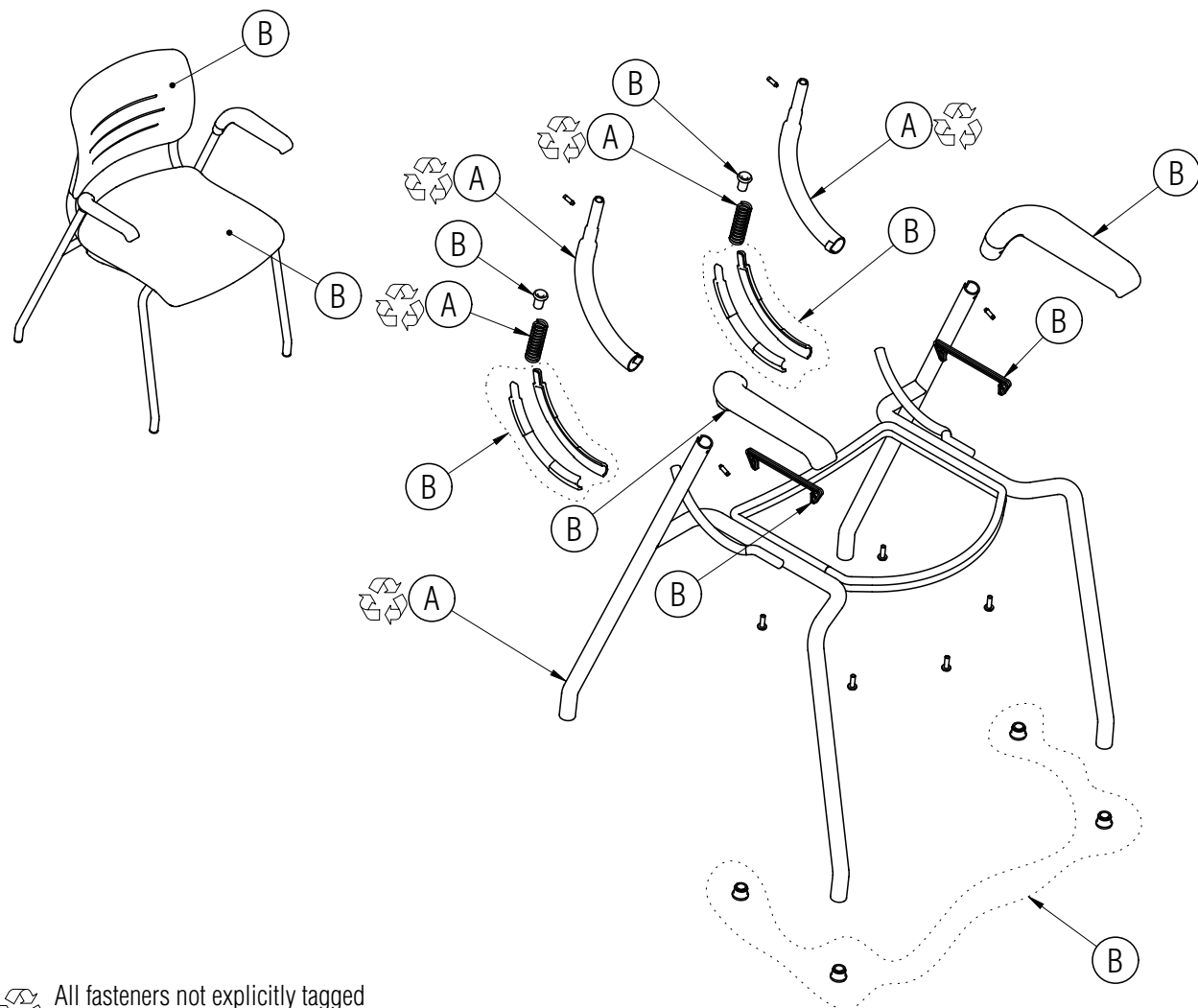


Disassembly Instructions

Grazie Chair

Material Type: A . Steel B. Plastic



All fasteners not explicitly tagged are Material Type A: Steel

Procedure:

1. Remove the screws holding the backrest to the tilt mechanism and remove the backrest.
2. Remove the screws holding the seat shroud to the seat and remove the seat and shroud.
3. Lift off the pre-load retainer clips from each side of the seat and slide off the backrest support tubes. Remove the two backrest slide halves, spring and bumper from the support tube.
3. Remove the screws holding each armrest to the chair frame and remove the armrests.
4. Pry the out the glides from the ends of the leg tubes.

General Notes:

1. Disassembly time: 5-10 minutes
2. This procedure assumes basic familiarity with hand tools and furniture terminology: no specialized training is required
3. All materials removed and disassembled shall be sorted and segregated with like materials and disposed of or recycled according to recycling availability or waste acceptance
4. For items to be recycled, refer to KI's End of Life Recycling Matrix and KI's End of Life Recovery Options Matrix, available at www.ki.com

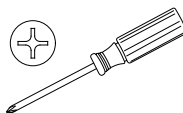
Required Tools



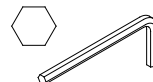
Gloves



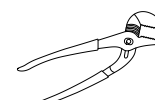
Safety Glasses



Philips Screwdriver



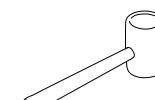
Allen Wrench



Channel Lock Pliers



Pry Bar



Rubber Mallet