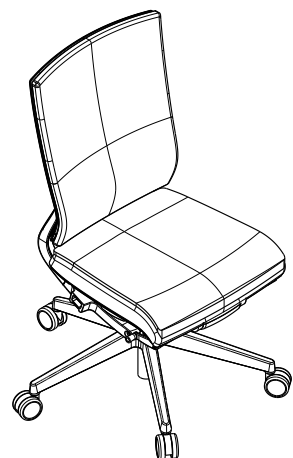


Disassembly Instructions

Altus™ and Allude™ Task Seating

Material Type: A . Steel B. Plastic C. Foam D. Aluminum



Procedure:


1. Invert the chair and undo the Velcro holding the seat cushion to the seat pan. Pull up on the cushion to remove the cushion.
2. Invert the chair and gently tap on the bottom of the steel height adjustment cylinder while lifting the star base.



**WARNING: CONTENTS UNDER PRESSURE!
REMOVE WITH CAUTION.**

General Notes:

1. Disassembly time: 10-15 minutes
2. This procedure assumes basic familiarity with hand tools and furniture terminology: no specialized training is required
3. All materials removed and disassembled shall be sorted and segregated with like materials and disposed of or recycled according to recycling availability or waste acceptance
4. For items to be recycled, refer to KI's End of Life Recycling Matrix and KI's End of Life Recovery Options Matrix, available at www.ki.com

 All fasteners not explicitly tagged are Material Type A: Steel

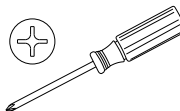
Required Tools



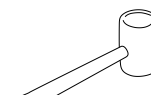
Gloves



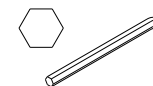
Safety Glasses



Phillips Screwdriver



Rubber Mallet

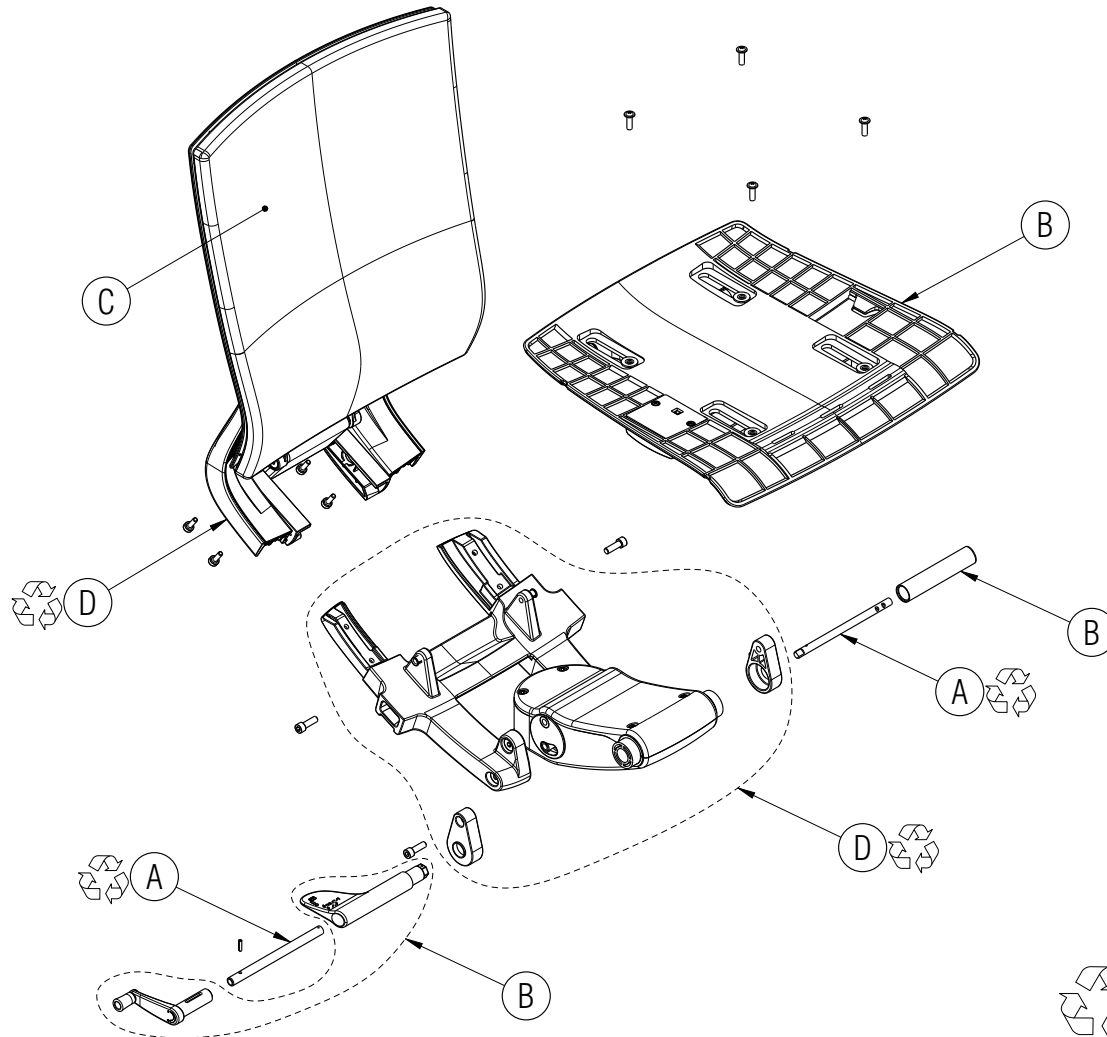


Allen Wrench

Disassembly Instructions

Altus™ and Allude™ Task Seating

Material Type: A . Steel B. Plastic C. Foam D. Aluminum



Procedure:

3. Remove the screws holding the seat back and seat pan onto the mechanism frame.
4. Pry off the plastic control knob and handles from the base support mechanism.

General Notes:

1. Disassembly time: 10-15 minutes
2. This procedure assumes basic familiarity with hand tools and furniture terminology: no specialized training is required
3. All materials removed and disassembled shall be sorted and segregated with like materials and disposed of or recycled according to recycling availability or waste acceptance
4. For items to be recycled, refer to KI's End of Life Recycling Matrix and KI's End of Life Recovery Options Matrix, available at www.ki.com

All fasteners not explicitly tagged are Material Type A: Steel

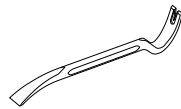
Required Tools



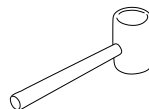
Gloves



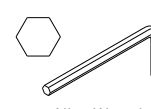
Safety Glasses



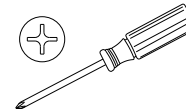
Pry Bar



Rubber Mallet



Allen Wrench



Phillips Screwdriver