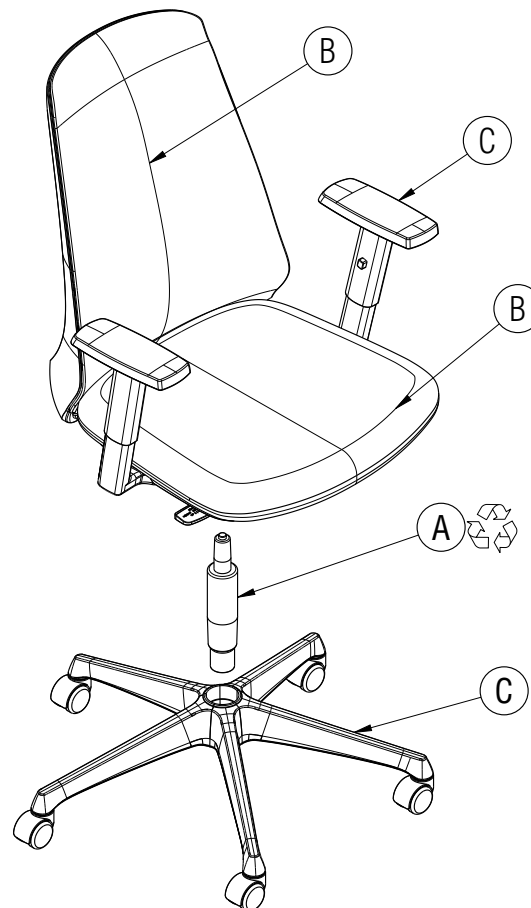


# Disassembly Instructions

Oath<sup>®</sup> Task Chair

Material Type:      A. Steel      B. Fabric      C. Plastic



## Procedure:


1. Remove the chair base from the underside of the chair using a rubber mallet.
2. Twist out the pneumatic height adjustment cylinder from the seat mechanism assembly using pliers.

 Caution: contents under pressure!

(continued on next page)

## General Notes:

1. Disassembly time: 15-30 minutes.
2. This procedure assumes basic familiarity with hand tools and furniture terminology: no specialized training is required.
3. All materials removed and disassembled shall be sorted and segregated with like materials and disposed of or recycled according to recycling availability or waste acceptance.
4. For items to be recycled, refer to KI's End of Life Recycling Matrix and KI's End of Life Recovery Options Matrix, available at [www.ki.com](http://www.ki.com).

 Fasteners (not shown) are Material Type A: Steel

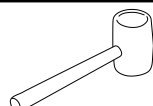
## Required Tools



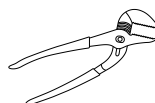
Safety Glasses



Gloves



Rubber Mallet



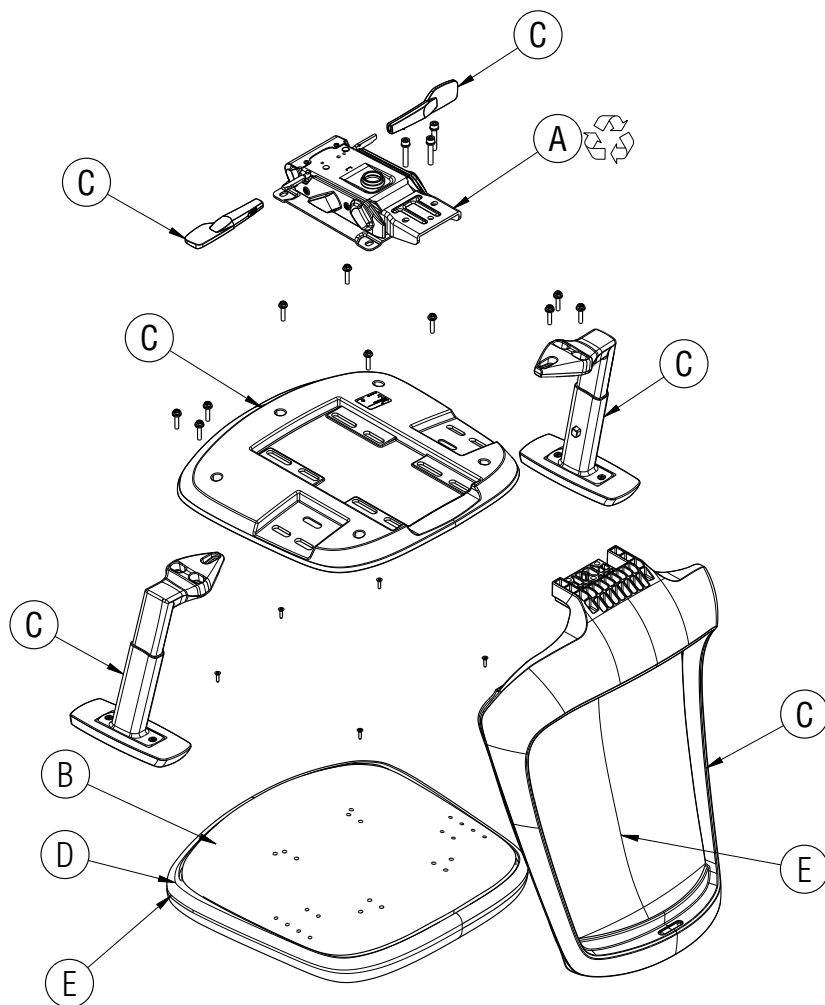
Channel Lock Pliers

# Disassembly Instructions

Oath<sup>®</sup> Task Chair



Material Type: A. Steel B. Wood C. Plastic D. Foam E. Fabric



Procedure (continued):

3. Remove the screws holding the backrest assembly onto the seat mechanism and remove the backrest and bracket.
4. Remove the screws holding the arms (if applicable) to the seat and remove the arms from the seat. The arm mechanisms do not require further disassembly.
5. Remove the screws holding the seat mechanism to the seat and remove the mechanism.
6. Remove both of the adjustment paddles from the seat adjustment mechanism.
7. Remove the shroud from the seat assembly.

 Fasteners shown are Material Type A: Steel

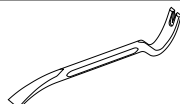
## Required Tools



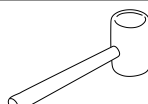
Safety Glasses



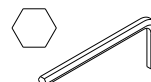
Gloves



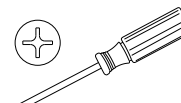
Pry Bar



Rubber Mallet



Allen Wrench



Philips Screwdriver



Pliers