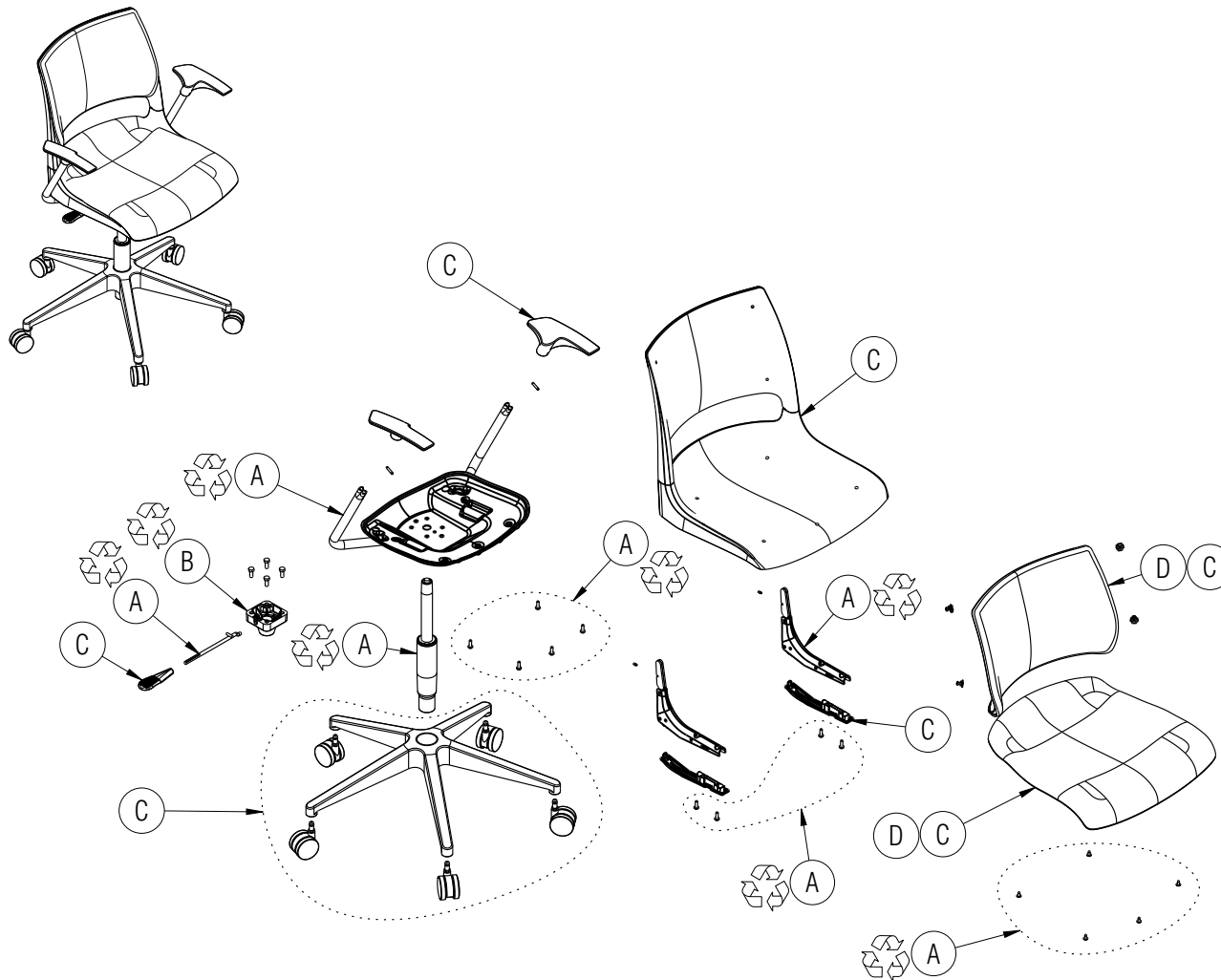


Disassembly Instructions

Doni™ Task Chair

Material Type: A. Steel B. Aluminum C. Plastic D. Foam/Fabric



Procedure:

1. Remove the set screws attaching the arm rests to the seat pan uprights, then remove the screws holding the seat to the seat pan. Detach seat from frame and remove the screws holding the backrest mechanisms to the seat.
2. Remove the seat and back pads from the seat and back.
3. Knock the seat pan frame off the gas cylinder from underneath to remove it.
4. Remove the screws holding the height adjustment mechanism onto the seat pan. Pull out the height adjustment lever and pull off the paddle.
5. Knock the gas cylinder out of the chair base from underneath and remove the casters from the chair base.

WARNING: CONTENTS UNDER PRESSURE!
REMOVE WITH CAUTION.

General Notes:

1. Disassembly time: 15-20 minutes
2. This procedure assumes basic familiarity with hand tools and furniture terminology: no specialized training is required
3. All materials removed and disassembled shall be sorted and segregated with like materials and disposed of or recycled according to recycling availability or waste acceptance
4. For items to be recycled, refer to KI's End of Life Recycling Matrix and KI's End of Life Recovery Options Matrix, available at www.ki.com

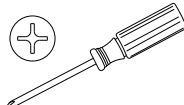
Required Tools



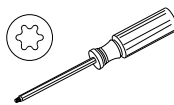
Gloves



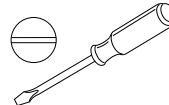
Safety Glasses



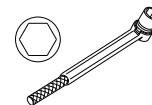
Phillips Screwdriver



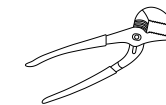
Torx Screwdriver



Flat Screwdriver



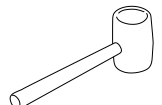
Hex Socket Wrench



Channel Lock Pliers



Pry Bar



Rubber Mallet